

KINESIOLOGY, ATHLETICS AND DANCE DIVISION DOCUMENTS

[November 14, 2016 Program Validation and SD Update with Faculty and Staff Minutes](#)

[December 15, 2016 SD Faculty and Staff Minutes](#)

[December 10, 2018 First Floor Training Room Plan- EXOS Model](#)

[October 1, 2019 CAN B1 Space Allocation Plans with Area](#)

[October 7, 2019 KAD Division Meeting](#)

[October 11, 2019 KAD Division Programming List of Concerns and Questions](#)

[October 14, 2019 CAN B1 Meeting Notes](#)

[October 14, 2019 KAD Division Programming List of Concerns and Questions- Final](#)

[October 14, 2019 KAD Division Weekly Meeting Agenda](#)

[October 16, 2019 President Moore- Email](#)

[October 28, 2019 KAD Division Weekly Meeting Agenda](#)

[October 28, 2019 KAD Division Construction Meeting Minutes](#)

[November 1, 2019 Retractable Hoop 2](#)

[November 1, 2019 Retractable Hoop 3](#)

[November 1, 2019 Retractable Hoop 4](#)

[November 1, 2019 Retractable Hoop](#)

[November 4, 2019 KAD Division Weekly Meeting Agenda](#)

[November 4, 2019 KAD Division Construction Meeting Minutes](#)

## MEETING MINUTES

To:	File	Date:	November 19, 2016
From:	Susan Vutz	Project:	SMCCCD Cañada College B1N, Kinesiology and Wellness Building
Subject:	Program Validation and SD Update #2, Staff and Faculty	Project No:	201619.00
Meeting Date:	November 14, 2016	Location:	Cañada College, Building 9
Attending:	<p><b><u>SMCCCD:</u></b>            Ama Midlanova, Matt Lee, Erik Gaspar, Chris Tigno, Vera Quijano, Jessica Kaven, Nick Carr, Cindy Jimenez, Katie Osborne, Tony Lucca, Mike Garcia, Anniqua Rana, Doug Hirzel, Mike Reynoso, Michelle Marquez, Chris Strugar-Fritsch (CSF)</p> <p><b><u>Swinerton:</u></b>            Greg Cheifitz (GC)</p> <p><b><u>Blach Construction:</u></b>            Ken Schroeder (KS)</p> <p><b><u>ELS:</u></b>            Clarence Mamuyac (CM), Susan Vutz (SV), Tracy Chan (TC)</p>	Distribution:	Greg Cheifitz, Design Team


Item	Discussion	Action By Date
<b>1.</b>	<b>General Issues:</b>	
1.1	CM presented an overview of the project to date: The design team was given a program (from the previous architects) and we have been working to refine it: <ul style="list-style-type: none"> <li>• Locker rooms will have wet/dry corridor separation—previously reviewed and accepted</li> <li>• New team rooms and locker rooms will provide access for coaches of opposite gender</li> </ul>	
1.2	Concept Design: Design based on ridgeline views, “sun hat”, campus connection. Plus bonus features of activated roof and landscaped plaza connecting the project to campus. EIR requires building to fit in with the landscape.	
1.3	Concern about traffic is addressed with loop drop-off—this will prevent traffic from stacking up in the road.	
<b>2.</b>	<b>Plan Review:</b>	
2.1	Floor plan overview: Spaces are mostly shared with some areas exclusively for the academic side and some areas exclusively for enterprise.	

- 2.2 Activated Roof: Athletics feels it's desirable to have the rooftop volleyball court be a multi-use area, not solely devoted to volleyball—might have classes in that location. No enclosed program area will be allowed on the roof because of code requirements.
- 2.3 Weight Room (on first floor) should be private—not all glass, but possibly some glazing at the top of the walls. More privacy is desired.
- 2.4 Glazing at first floor: Coaches are concerned about glare and heat gain with glass on two sides of the basketball court, also concerned about sun from second floor windows.
- Large overhangs on the south side will protect the court from the sun, and on the east side, is typically not an issue because it will be morning sun.
  - The design process is ongoing and it will address sun issues, for example with use of View Dynamic Glass on the dance rooms at the west side, which automatically darkens and adjust to glare in response to sun and weather conditions outside.
- 2.5 Concern was expressed about athletes running into the glass; however clearances provided on the sides of the court are per NCAA standards
- 2.4 Court configuration: Volleyball coach uses the court with three courts oriented in the north-south direction. She is concerned about errant balls going into the second floor. Court is used for indoor soccer as well, so there is a concern that the glass will take a pounding.
- 2.7 Weight room and athletic training room:
- These areas are for academic use only.
  - Coaches would like the weight room and training room next to one another on the pool side of the building. A golf cart is used to bring equipment and supplies from the training room out to the field, so exterior access is important—could load and unload from the pool deck.
  - Weight room is too small. Size should be increased from 1,000 SF to 2,000 SF.
- 2.8 Team rooms: Coaches would like team rooms to be multi-functional. They might watch a film together there. All rooms will have Ethernet, so video/internet capability will be built in. ELS/Blach to assess how many athletes can currently be accommodated in the team rooms.
- 2.9 Kinesiology, dance, and athletics are concerned about sharing space—they do not want to have to fight for it. This will have to be managed with policies and procedures. The chancellor has made it clear that academics takes precedence in this facility.
- 2.10 **Next Steps:** Coaches would like information about room sizes and areas. They will need to look at size and number of offices and understand the plan. **ELS to provide plans to CSF for distribution to athletics and staff for review. The design team needs feedback as soon as possible—within one week, by next Monday**
- ELS/Blach  
Coaches /athletics

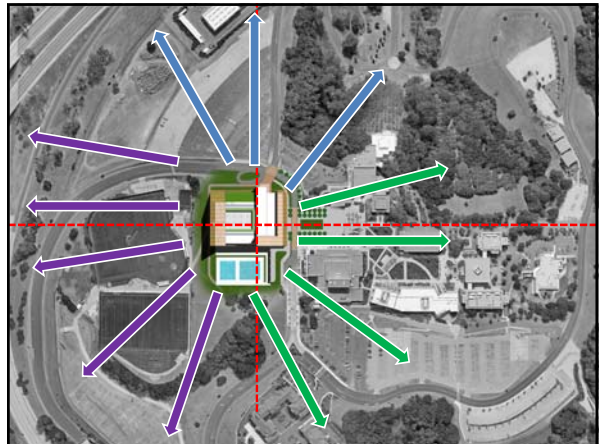
These minutes summarize the conclusions of the subject meeting. If there are any substantial errors or omissions, please contact ELS immediately.

Cañada College  
Kinesiology & Wellness Building

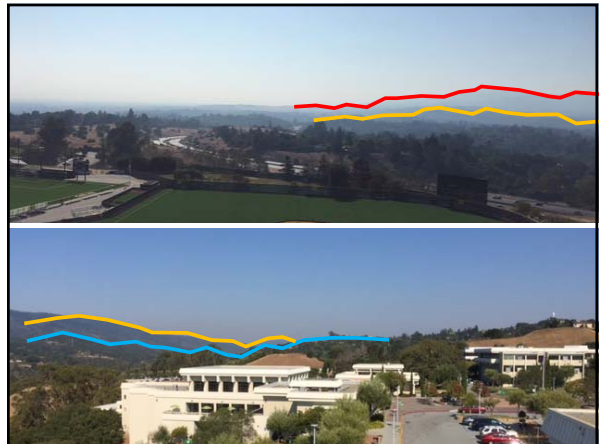
BLACH  
CONSTRUCTION  
ELS  
ARCHITECTURE AND DESIGN



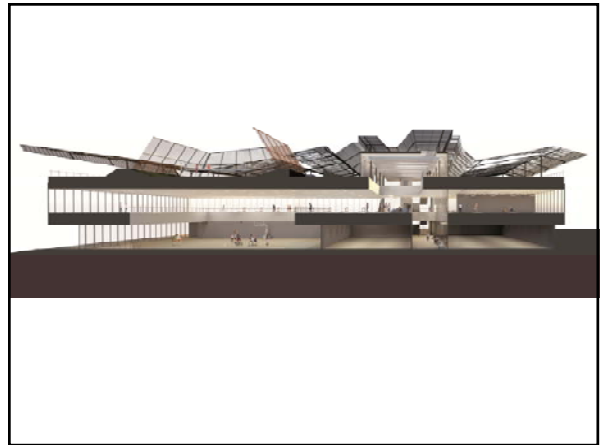
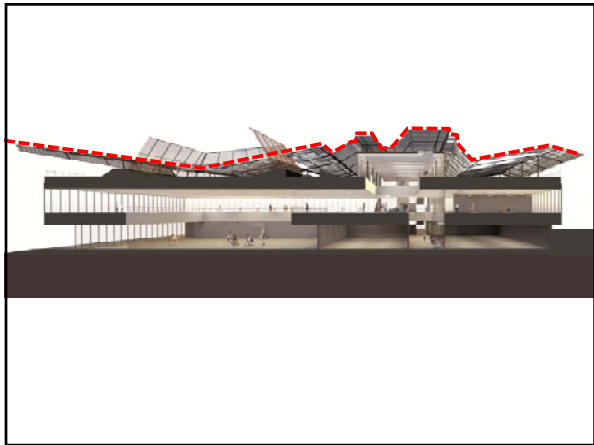
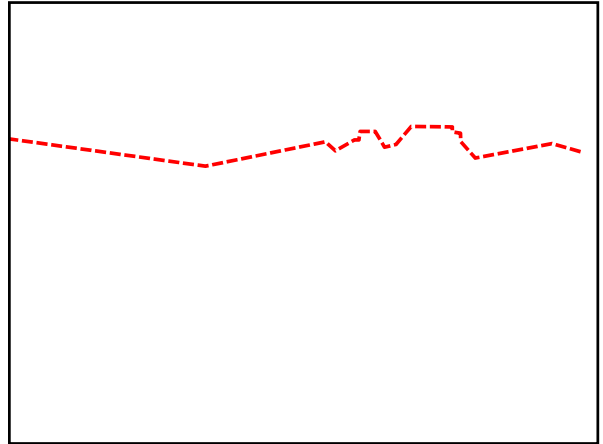
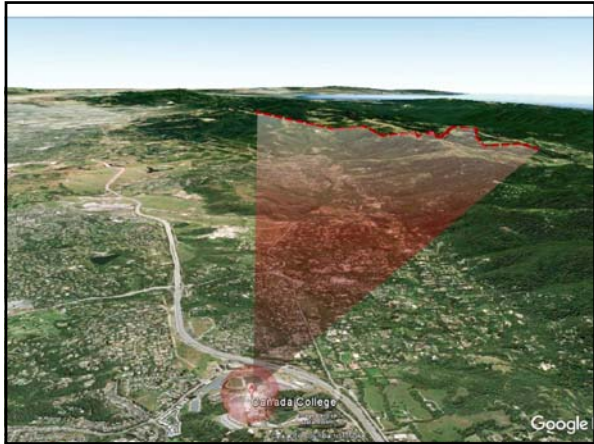
PROGRAM VALIDATION AND  
SCHEMATIC DESIGN UPDATE - 11.14.16

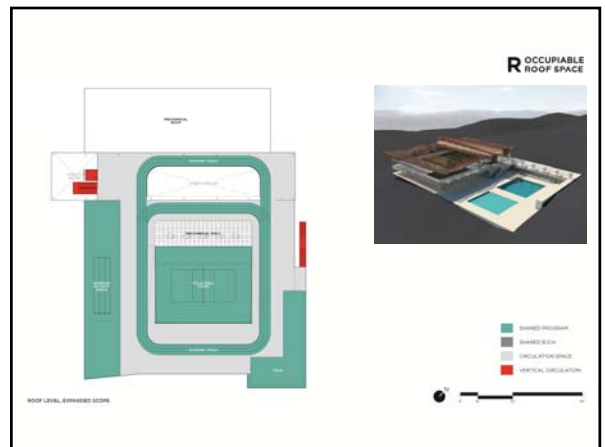
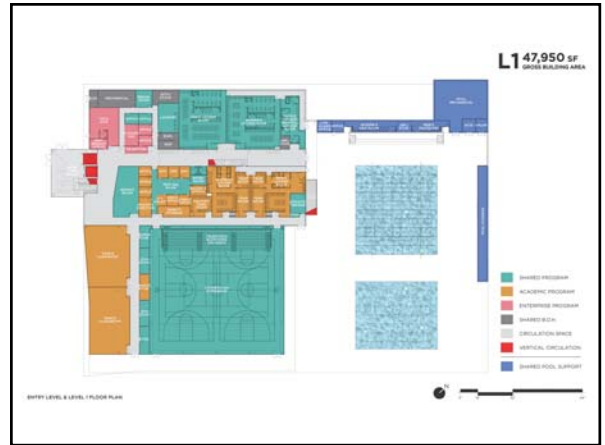
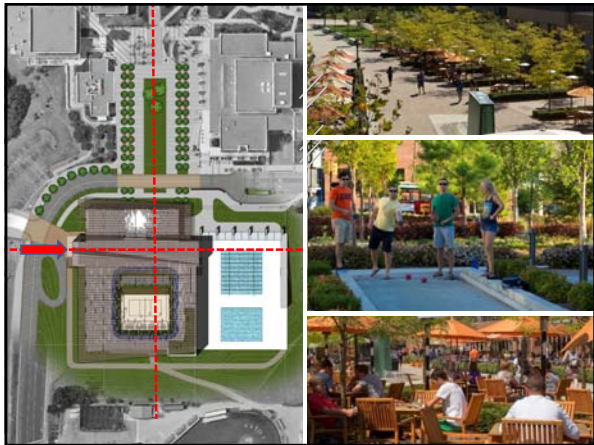
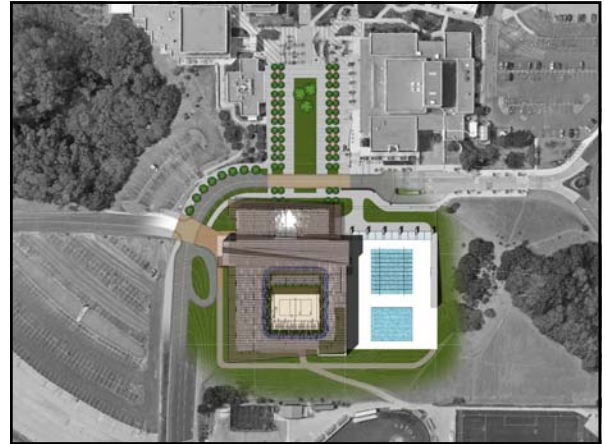
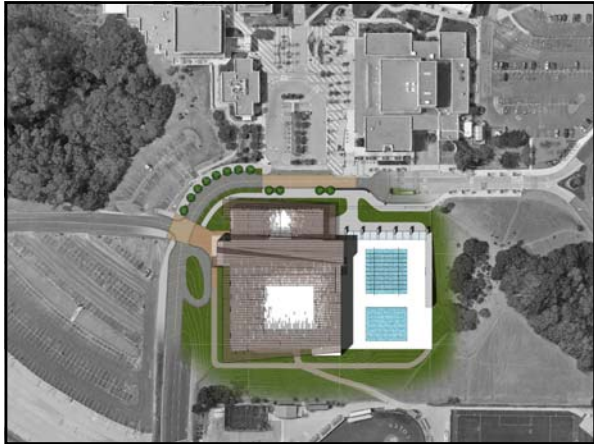


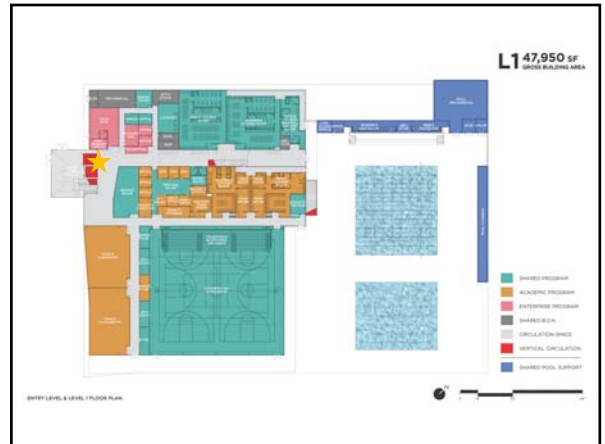
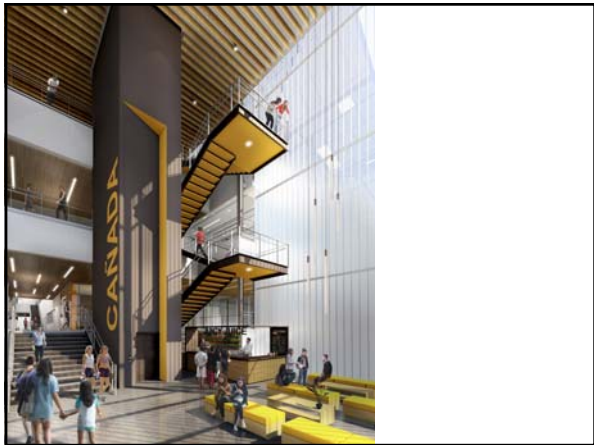
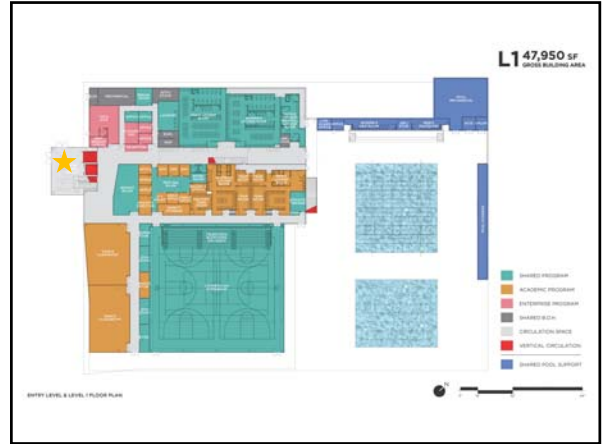
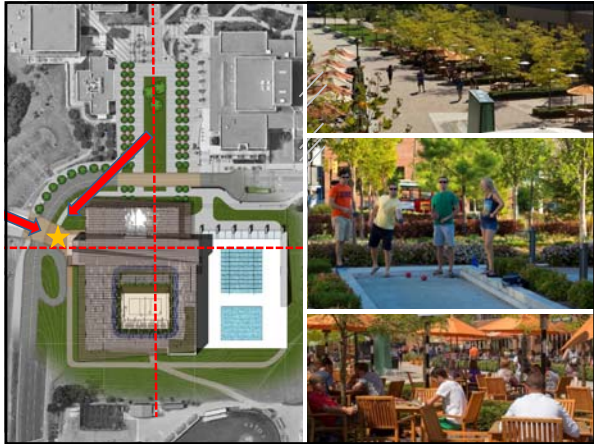
RIDGELINE VIEWS  
SUN HAT  
CAMPUS CONNECTION



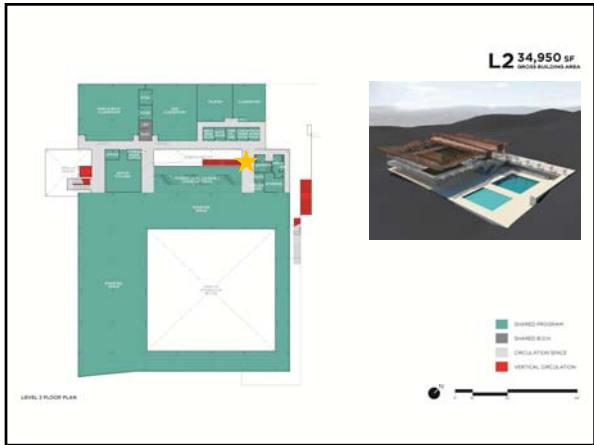


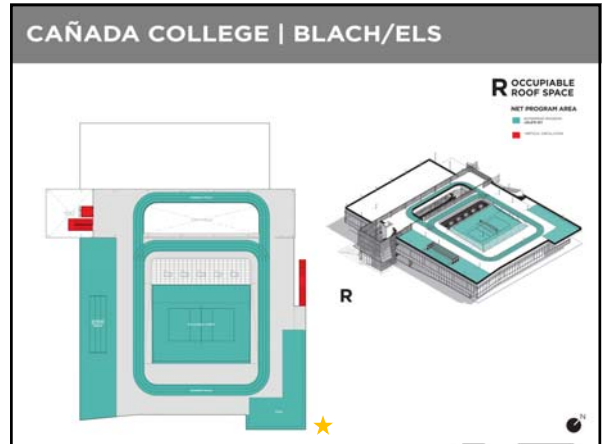
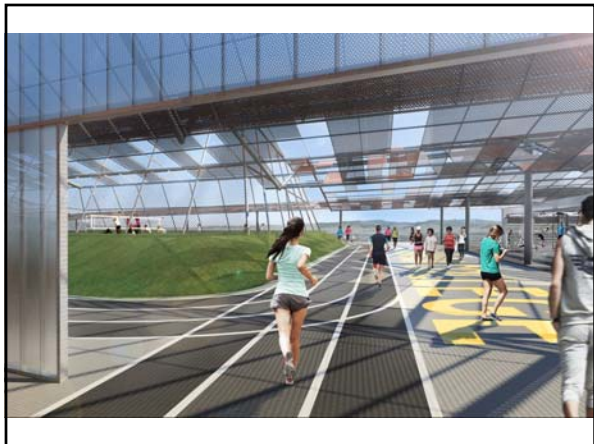
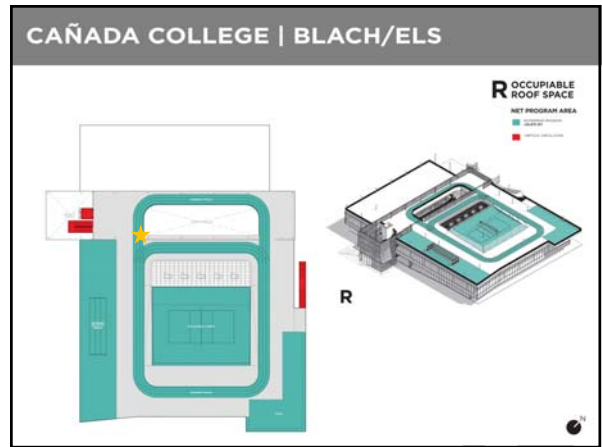
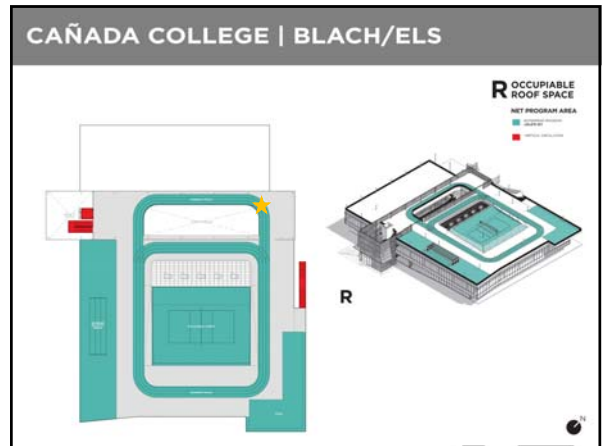




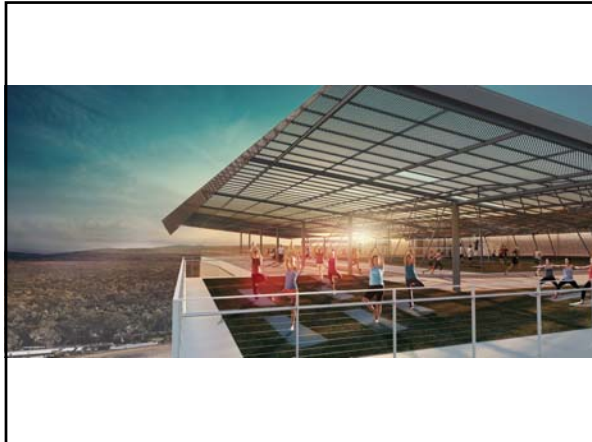




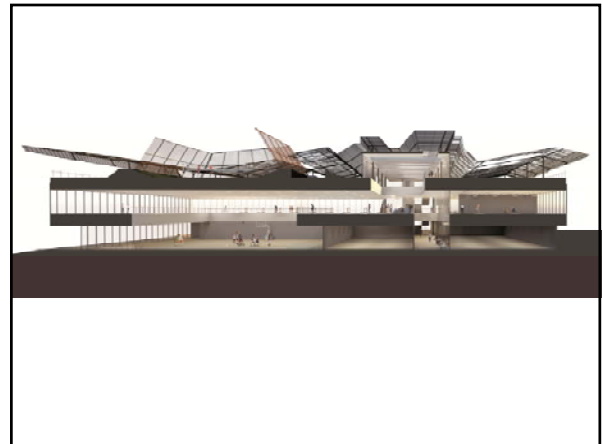
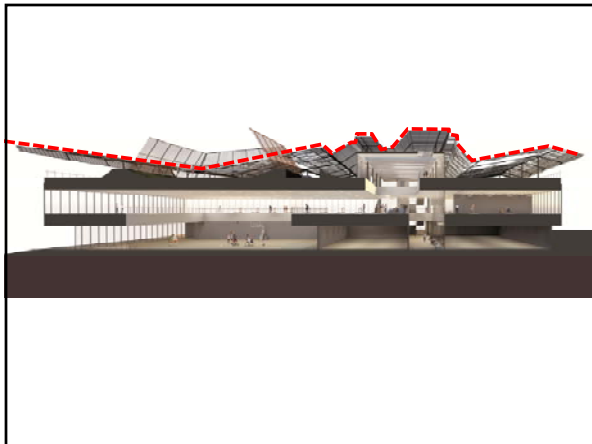
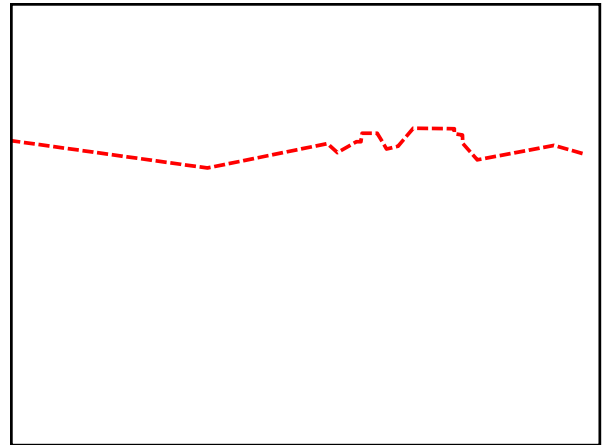
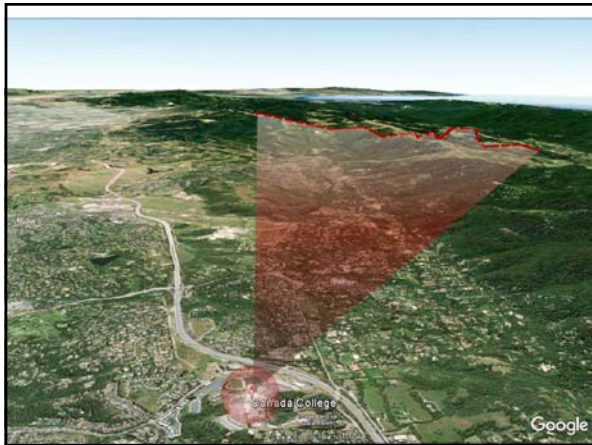




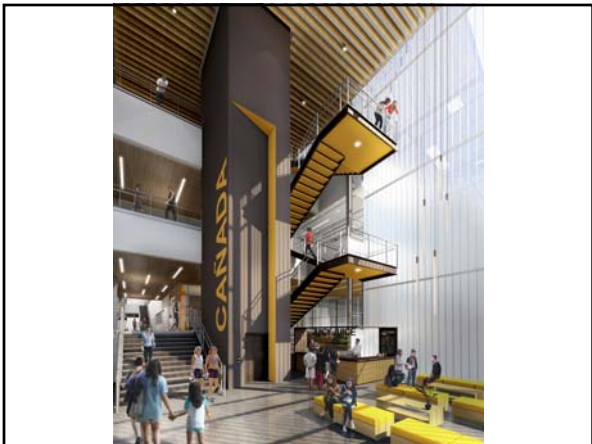
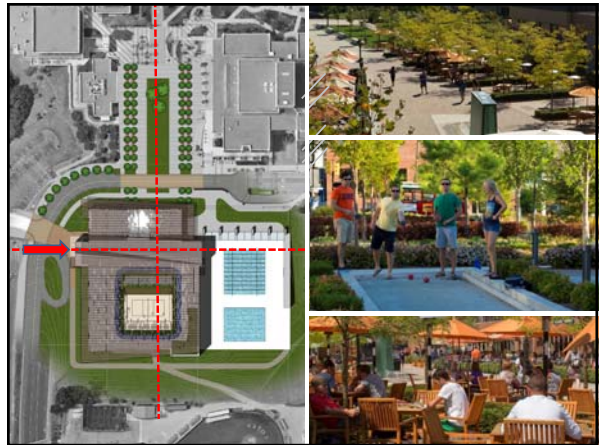


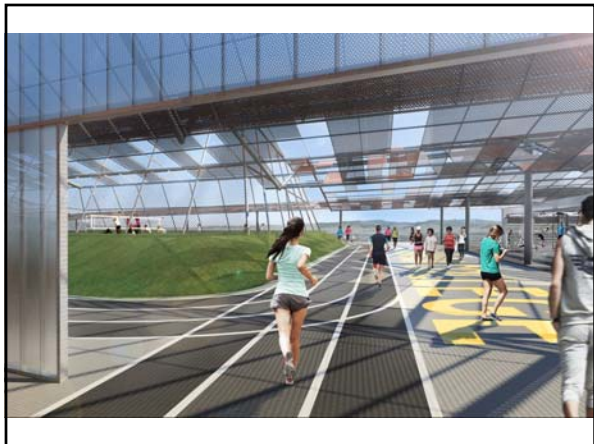


DESIGN  
SUMMARY

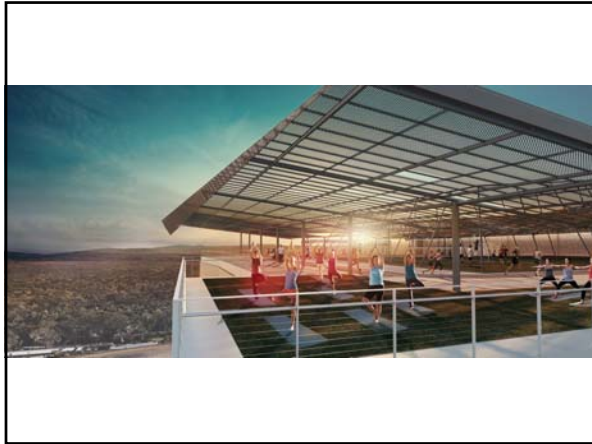













Cañada College  
Kinesiology & Wellness Building

**BLACH**  
CONSTRUCTION  
**ELS**  
ARCHITECTURE AND DESIGN



PROGRAM VALIDATION AND  
SCHEMATIC DESIGN UPDATE - 11.14.16

## MEETING MINUTES

To:	File	Date:	December 23, 2016
From:	Susan Vutz, Clarence Mamuyac	Project:	SMCCCD Cañada College B1N, Kinesiology and Wellness Building
Subject:	SD Meeting No. 3 – Faculty and Staff Input	Project No:	201619.00
Meeting Date:	December 15, 2016	Location:	CSM Building 1, Rm. 244
Attending:	<p><b><u>SMCCCD/Cañada College:</u></b>          Chris Strugar-Fritsch (CS), Michelle Marquez (MM), Jose Nunez (JN), Gregory Anderson (GA), Nick Carr (NC), Cindy Jimenez (CJ), Anniqua Rana (AR), Erik Gaspar (EG), Ana Miladinova (AM), Doug Hirzel (DH), Katie Osborne (KO)</p> <p><b><u>Swinerton:</u></b>          Greg Cheifetz (GC), Jack Herbert (JH)</p> <p><b><u>ELS/Blach:</u></b>          Clarence Mamuyac (CM), Susan Vutz (SV), Ken Schroeder (KS)</p>	Distribution:	Greg Cheifetz, Jack Herbert, Design Team

## INTRODUCTION

Item	Discussion	Action By, Date
1	<b>Design Recap: CM presented Design recap with modifications since last review.</b>	
1.1	Reception Desk/check-in: Students who are in a class will be on a list and they will be issued a fob that allows them access for the time of the class.	
2	<b>Team Rooms:</b>	
2.1	Team Rooms: The number of team rooms has been changed from previous plans from four to two. This revision reflected the fact that there will be two team rooms on the field (for soccer and baseball).	ELS

2.2 Coaches expressed the following concerns:

- The soccer coaches would like to be in the building, not at the field houses. Coaches' offices are in the building, and going back and forth during the day between their offices and the field house presents a problem for them.
- There is a concern with soccer and baseball sharing space. Teams are active year-round.
- KO expressed concern that the teams do not have enough space in the new building.

2.3 Teams and seasons/size:

Team	Size	Season
Volleyball	15 (13 to 20)	
Basketball	15 (13 to 20)	Fall/Winter
Soccer (Women's)	26 – 30	Fall
Soccer (Men's)	30 – 40 (currently 25?)	Fall
Baseball	45 - 50	

2.4 Shared Team Rooms: There is not enough space in the building to create four separate team rooms, however, coaches prefer not to share team rooms. It may be possible to create separate areas for two teams within one team room. Per JN, the building cannot be enlarged to create more space for team rooms.

2.5 Varsity Storage: It is possible to create two larger team rooms by dividing the varsity storage and giving half of the space to each of the team rooms, keeping the visitor's team room in the location shown.

**3 Other Areas:**

3.1 Dance Studio Storage: Need storage for yoga blankets, blocks, stability balls, yoga mats, foam rollers. This should be inside the studio rather than in the hallway. A ballet barre will also be needed along one wall. **AM will provide a list of equipment needing to be stored to ELS so storage can be designed.** AM  
 Storage might be shared between the two studios, or be located along the wall between the two studios, adjacent to the stair.

3.2 Athletic Trainer Office: Add glass to provide a view from the Athletic Trainer Office into the Athletic Training Room. Add a second door from the Athletic Trainer's Office into the faculty office area. ELS

3.3 CJ will provide a list of equipment for the athletic training room.

ATTACHMENTS:

PowerPoint Slides: SMCCD Kinesiology – Schematic Design Update 3 – 50%-12.15.2016

These minutes summarize the conclusions of the subject meeting. If there are any substantial errors or omissions, please contact ELS immediately.

# Cañada College

Kinesiology & Wellness Building




CAN B1N  
SCHEMATIC DESIGN UPDATE #3 - 12.15.2016

# Cañada College

## AGENDA


- Design Recap SD Meeting #2
  - Reception Desk at Lower Lobby
  - Academic/Athletic User Core
  - Gym Level Structural and Envelope
  - DSA Code Impacts on Building + Roof
- Sun Hat - Refined
- Landscape Entry at Loop Road - Refined
- Floor Plans - Programming Confirmation
- Schematic Design - 50%.....Summary and Look Ahead
- Next Steps

# Cañada College

## AGENDA

- Design Recap SD Meeting #2
  - Reception Desk at Lower Lobby
  - Academic/Athletic User Core
  - Gym Level Structural and Envelope
  - DSA Code Impacts on Building + Roof
- Sun Hat - Refined
- Landscape Entry at Loop Road - Refined
- Floor Plans - Programming Confirmation
- Schematic Design - 50%.....Summary and Look Ahead
- Next Steps

## RIDGELINE VIEWS

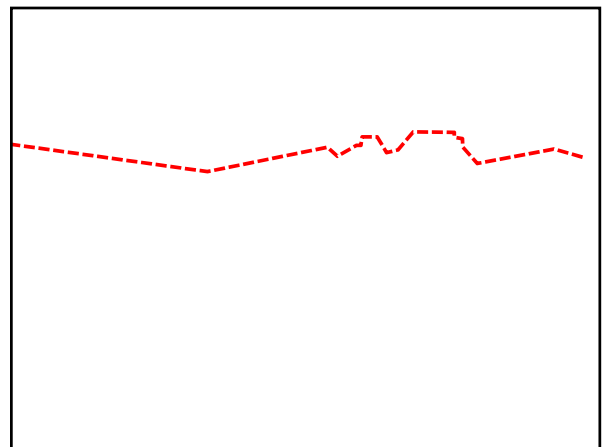


SUN HAT

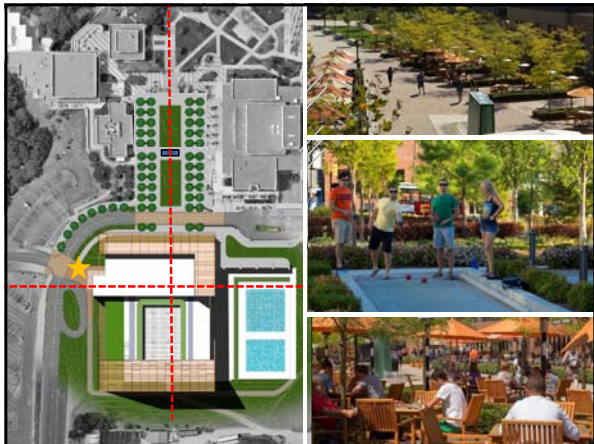
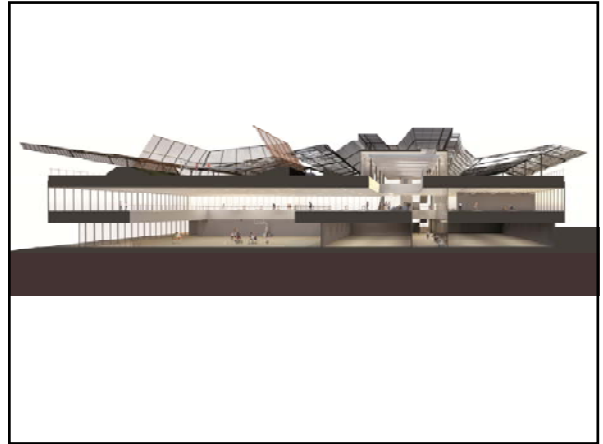
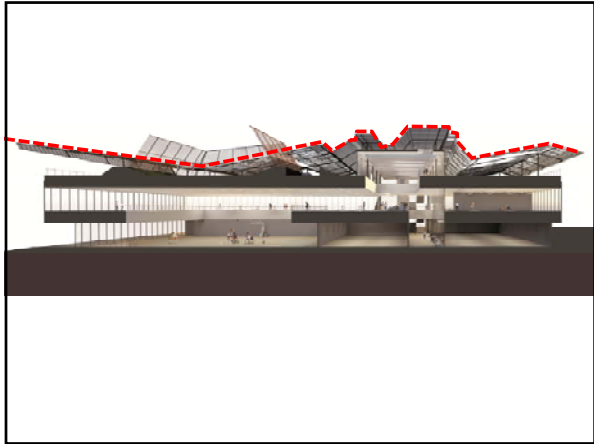
ENTRY

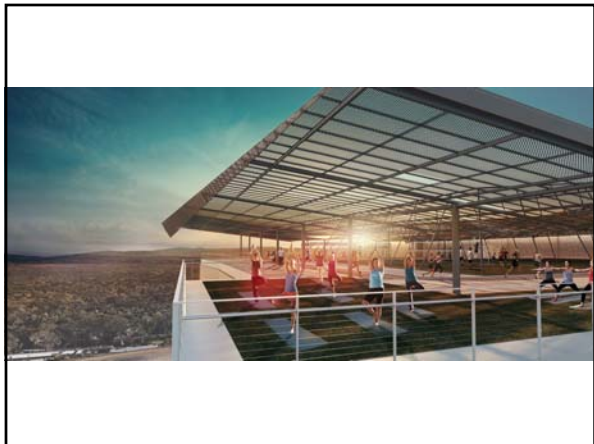
INTERIORS

BONUS







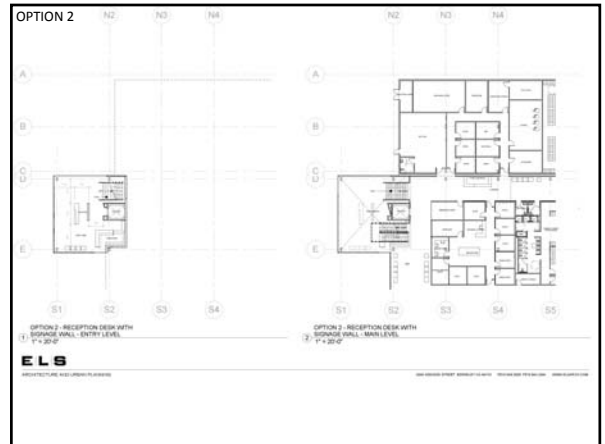
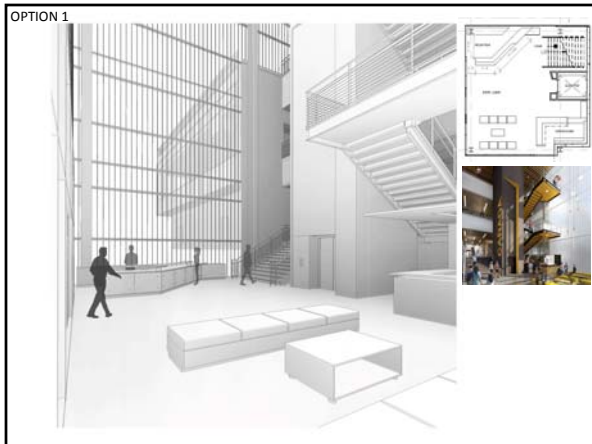


# Cañada College

**AGENDA**

- Design Recap
- **Reception Desk at Lower Lobby Options**
- Academic/Athletic User Core Revised Plan
- Gym Level Structural and Envelope Options
- DSA Code Impacts on Building + Roof



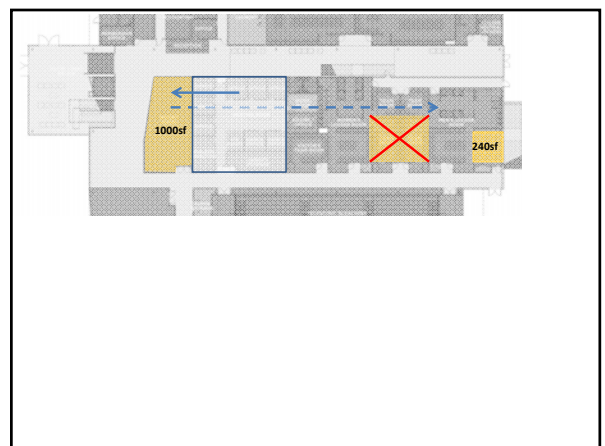
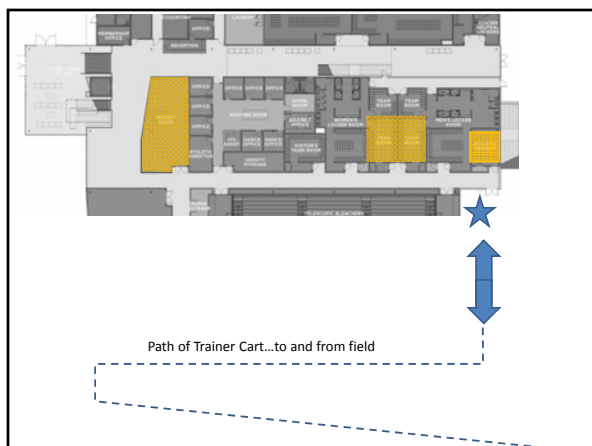
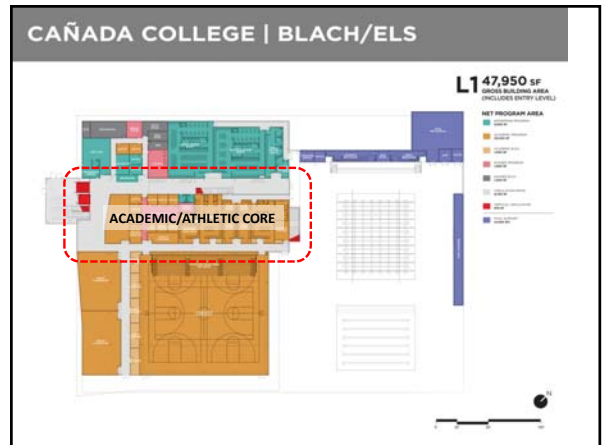




# Cañada College

## AGENDA

- Design Recap
- Reception Desk at Lower Lobby Options
- Academic/Athletic User Core - Revised Plan
- Gym Level Structural and Envelope Options
- DSA Code Impacts on Building + Roof



# Cañada College

## AGENDA

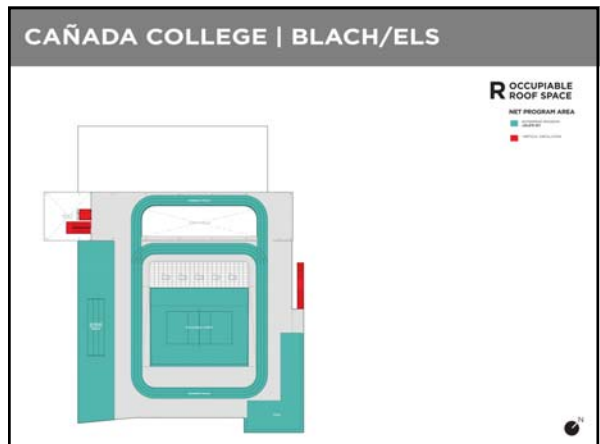
- Design Recap
- Reception Desk at Lower Lobby Options
- Academic/Athletic User Core Revised Plan
- **Gym Level Structural and Envelope Options**
- DSA Code Impacts on Building + Roof



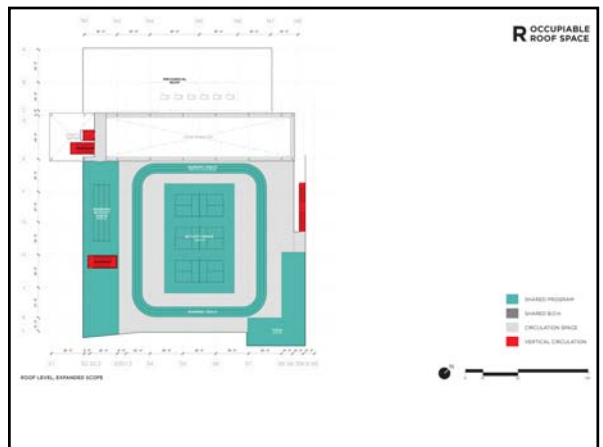
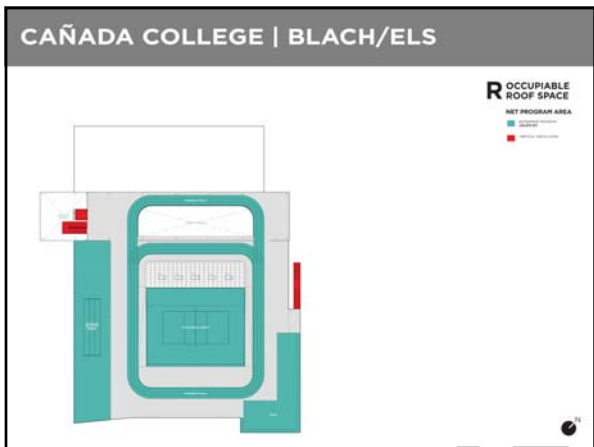
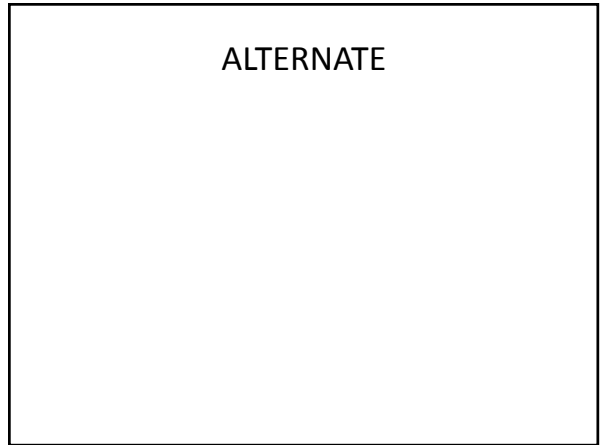
# Cañada College

## AGENDA

- Design Recap
- Reception Desk at Lower Lobby Options
- Academic/Athletic User Core Revised Plan
- Gym Level Structural and Envelope Options
- **DSA Code Impacts on Building + Roof**







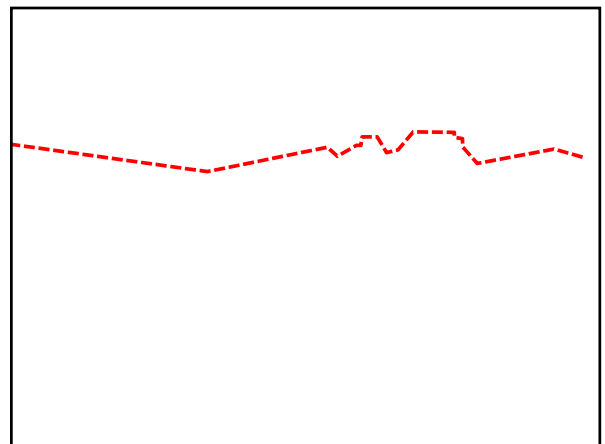


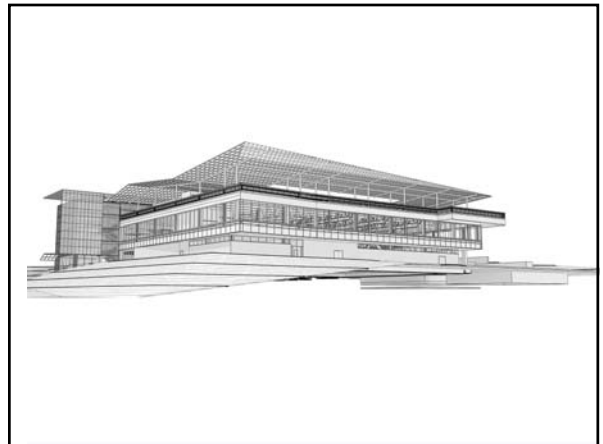
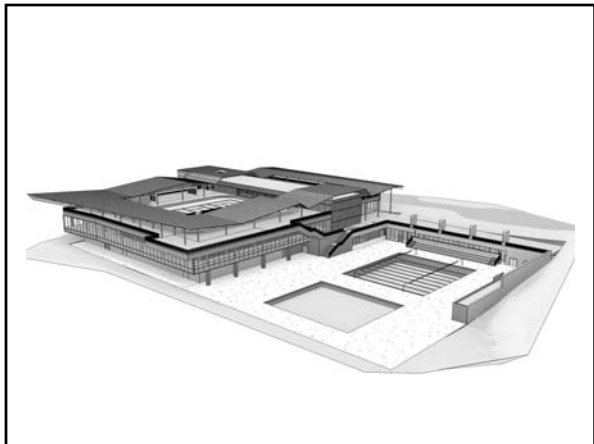
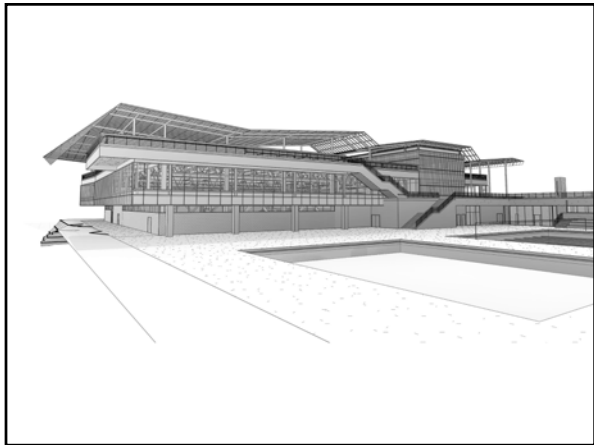
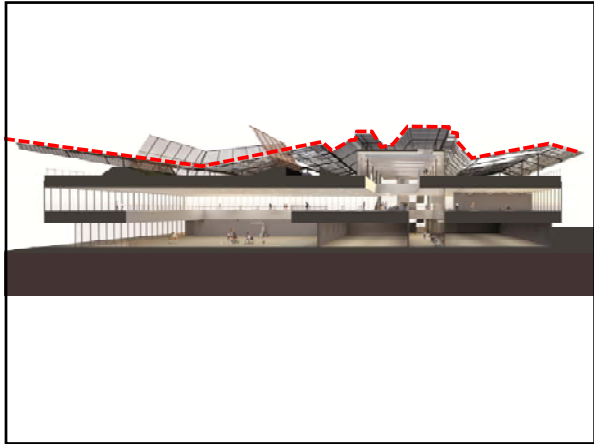


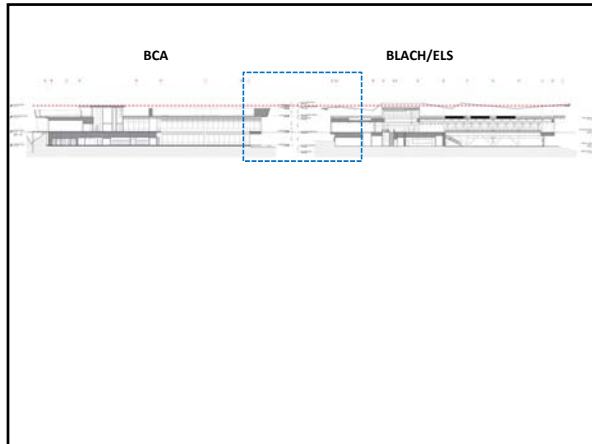
# Cañada College

## AGENDA

- Design Recap SD Meeting #2
  - Reception Desk at Lower Lobby
  - Academic/Athletic User Core
  - Gym Level Structural and Envelope
  - DSA Code Impacts on Building + Roof
- Sun Hat – Refined
  - Landscape Entry at Loop Road – Refined
  - Floor Plans – Programming Confirmation
  - Schematic Design – 50%.....Summary and Look Ahead
  - Next Steps



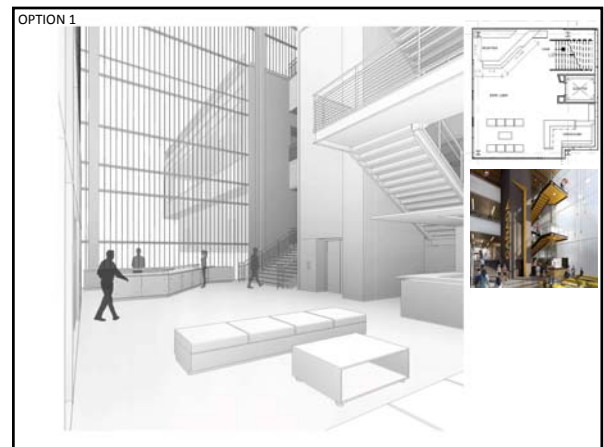
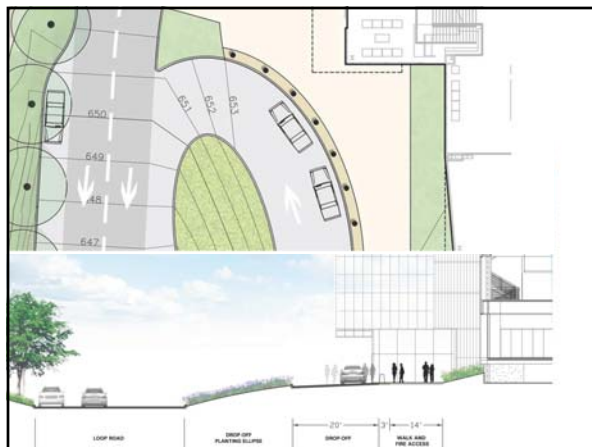
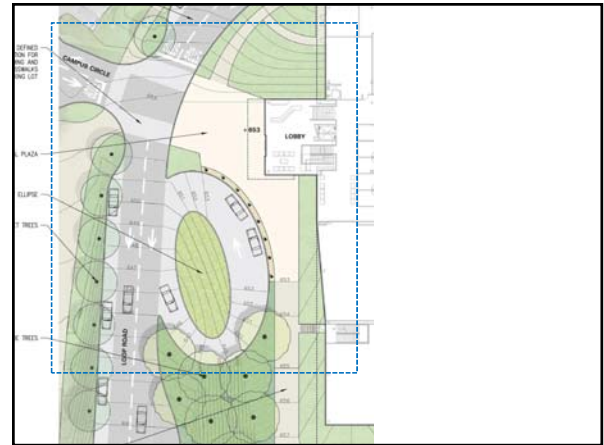
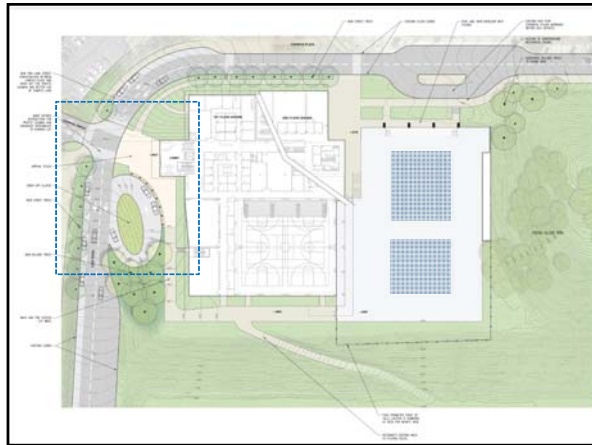




# Cañada College

## AGENDA

- Design Recap SD Meeting #2
  - Reception Desk at Lower Lobby
  - Academic/Athletic User Core
  - Gym Level Structural and Envelope
  - DSA Code Impacts on Building + Roof
- Sun Hat – Refined
- **Landscape Entry at Loop Road – Refined**
- Floor Plans – Programming Confirmation
- Schematic Design – 50%.....Summary and Look Ahead
- Next Steps



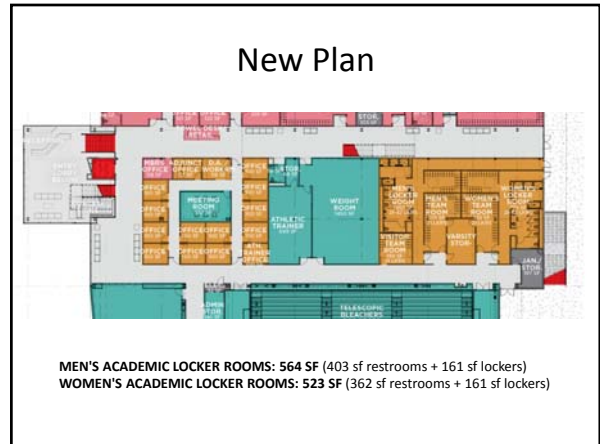
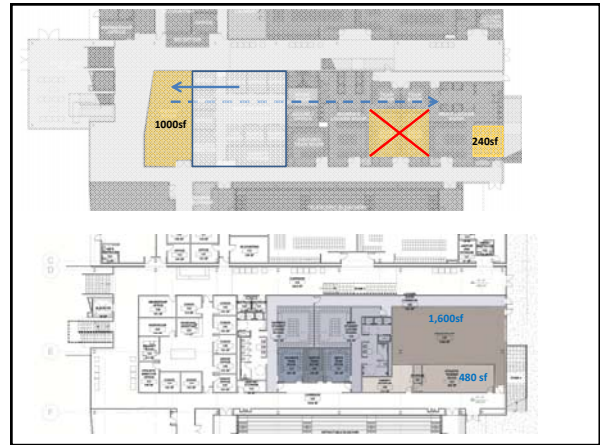
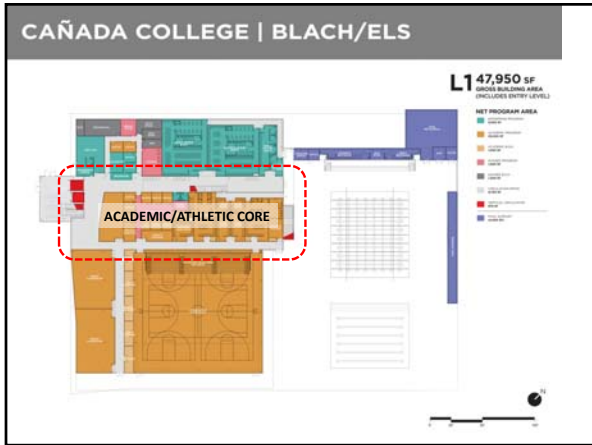


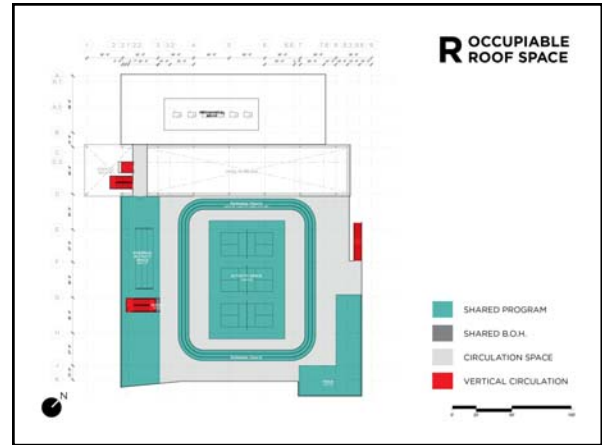
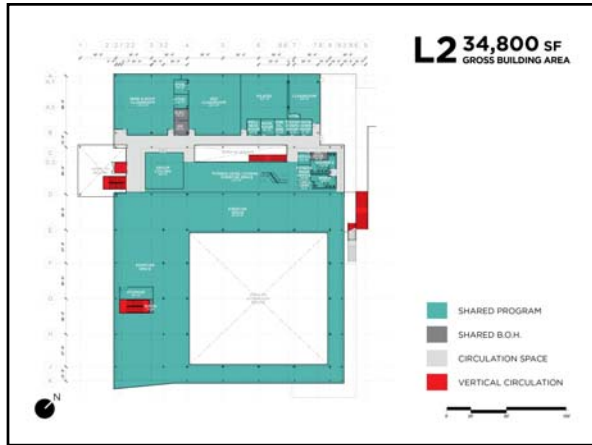
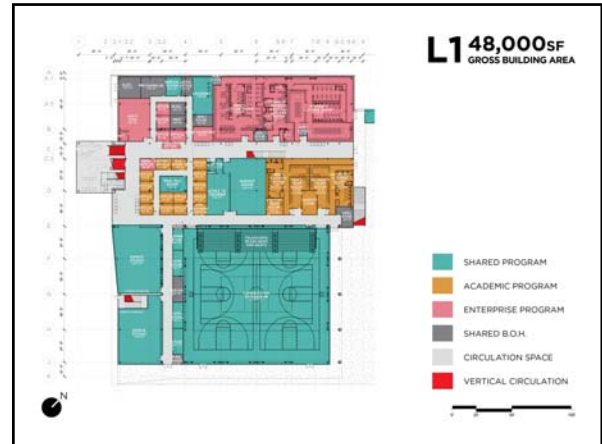


# Cañada College

## AGENDA

- Design Recap SD Meeting #2
  - Reception Desk at Lower Lobby
  - Academic/Athletic User Core
  - Gym Level Structural and Envelope
  - DSA Code Impacts on Building + Roof
- Sun Hat – Refined
- Landscape Entry at Loop Road – Refined
- **Floor Plans – Programming Confirmation**
- Schematic Design – 50%.....Summary and Look Ahead
- Next Steps





# Cañada College

## AGENDA

- Design Recap SD Meeting #2
  - Reception Desk at Lower Lobby
  - Academic/Athletic User Core
  - Gym Level Structural and Envelope
  - DSA Code Impacts on Building + Roof
- Sun Hat – Refined
- Landscape Entry at Loop Road – Refined
- Floor Plans – Programming Confirmation
- Schematic Design – 50%.....Summary and Look Ahead
- Next Steps

### 50% Schematic Design.....Work to date

Ongoing cost checks and updates with Blach and Revit model.

- 11/23 MEP D/B subs meeting with Integral to discuss HVAC options and modeling goals
- 11/29 Review code strategy with Code Consultant
- 11/30 Skin optimization and daylighting meeting (ELS and Integral)
- 12/2 Meet with Cañada Facilities to obtain input on maintenance and storage requirements
- 12/2 Meet with Public Safety to obtain input on security issues
- 12/6 Fire Marshal meeting to review fire truck access requirements.
- 12/8 Design team coordination meetings with Blach (structural, civil, MEP)
- 12/13 Meet with IT to review space and equipment requirements

**DSA:** Decision to go with the Informal Collaborative Process limits the team to 2 meetings. Decision to postpone meeting to early January when we are 75% to 90% complete with SD so we can get the most out of our meeting.

# Cañada College

## AGENDA

- Design Recap SD Meeting #2
  - Reception Desk at Lower Lobby
  - Academic/Athletic User Core
  - Gym Level Structural and Envelope
  - DSA Code Impacts on Building + Roof
- Sun Hat – Refined
- Landscape Entry at Loop Road – Refined
- Floor Plans – Programming Confirmation
- Schematic Design – 50%.....Summary and Look Ahead
- **Next Steps**


# Cañada College

## SUMMARY + NEXT STEPS

- Direction Recap
- Stakeholder Meeting: Academic/Athletic User Core Revised Plan
- Next Meeting – Schematic Design #4  
January 10, 2017, 2 to 4pm  
CSM 01-244
- Schematic Design Phase Complete  
February 9, 2017

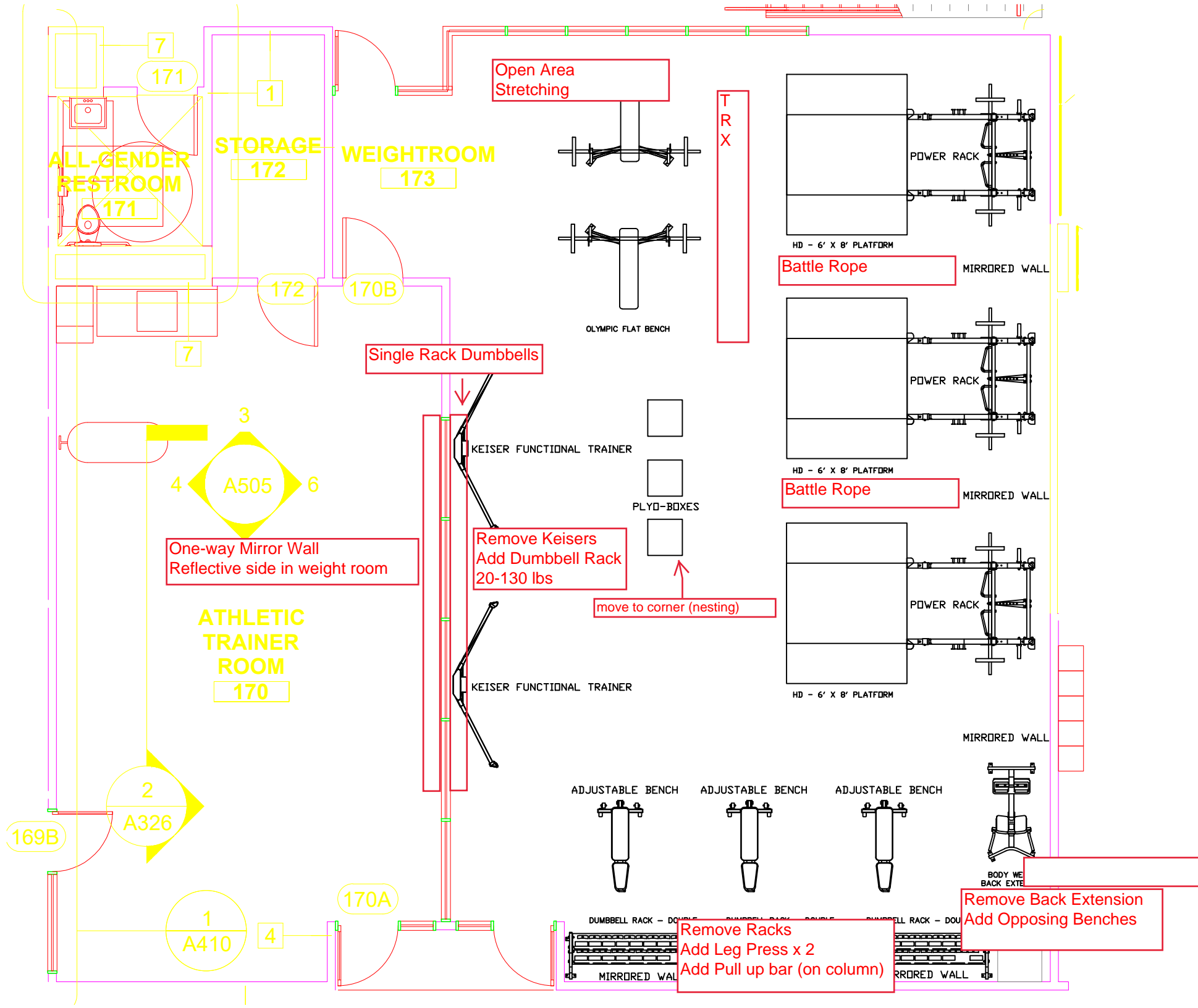
# Cañada College

## Kinesiology & Wellness Building



CAN B1N  
SCHEMATIC DESIGN UPDATE #3 – 12.15.2016





**ALL-GENDER RESTROOM**  
171

**STORAGE**  
172

**WEIGHTROOM**  
173

**ATHLETIC TRAINER ROOM**  
170

**Open Area Stretching**

**TRX**

**Battle Rope**

**Battle Rope**

**Single Rack Dumbbells**

**One-way Mirror Wall**  
Reflective side in weight room

**Remove Keisers**  
Add Dumbbell Rack  
20-130 lbs

**move to corner (nesting)**

**Remove Racks**  
Add Leg Press x 2  
Add Pull up bar (on column)

**Remove Back Extension**  
Add Opposing Benches

7

171

1

172

170B

7

3

A505

4

6

2

A326

169B

1

A410

4

170A

ADJUSTABLE BENCH

ADJUSTABLE BENCH

ADJUSTABLE BENCH

BODY WE  
BACK EXTE

DUMBBELL RACK - DOUBLE

MIRRORED WALL

HD - 6' X 8' PLATFORM

HD - 6' X 8' PLATFORM

HD - 6' X 8' PLATFORM

OLYMPIC FLAT BENCH

PLYO-BOXES

KEISER FUNCTIONAL TRAINER

KEISER FUNCTIONAL TRAINER

POWER RACK

POWER RACK

POWER RACK

MIRRORED WALL

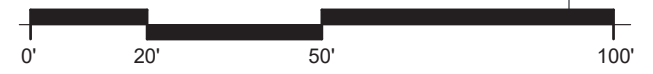
MIRRORED WALL

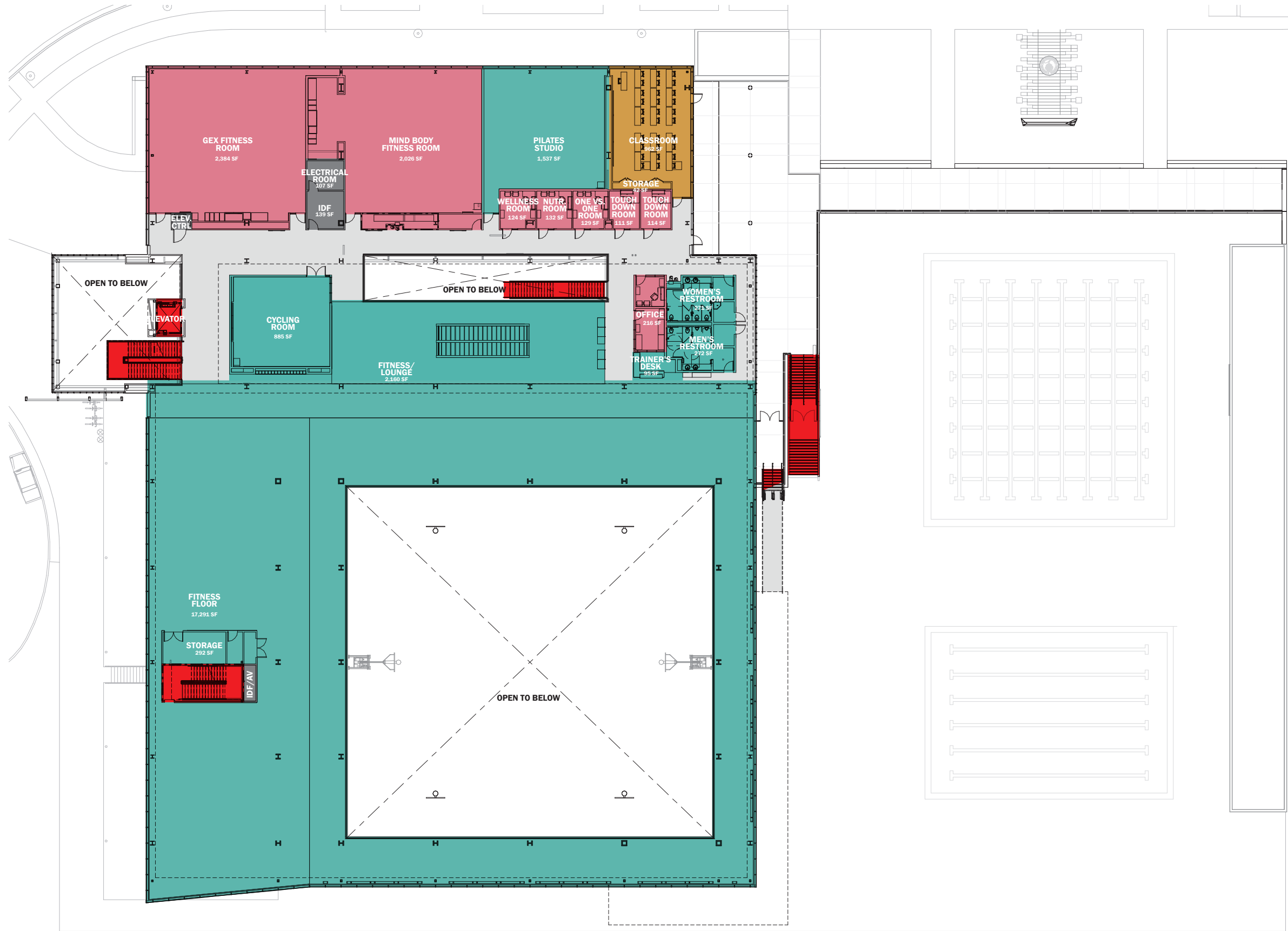
MIRRORED WALL

# LEVEL 1

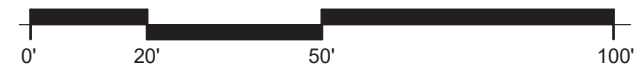


- SHARED PROGRAM
- ACADEMIC PROGRAM
- ENTERPRISE PROGRAM
- SHARED B.O.H.
- CIRCULATION SPACE
- VERTICAL CIRCULATION



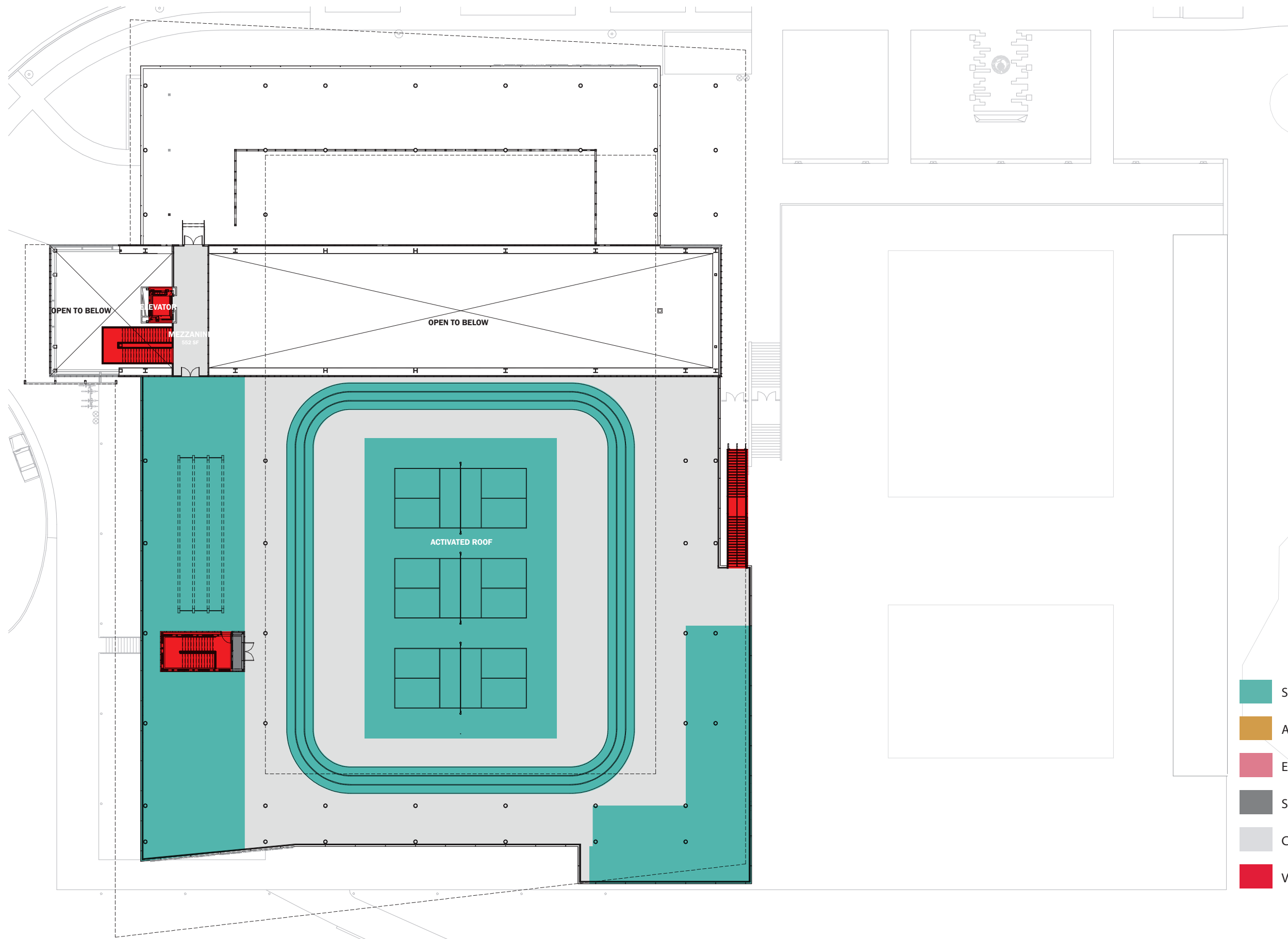


- SHARED PROGRAM
- ACADEMIC PROGRAM
- ENTERPRISE PROGRAM
- SHARED B.O.H
- CIRCULATION SPACE
- VERTICAL CIRCULATION

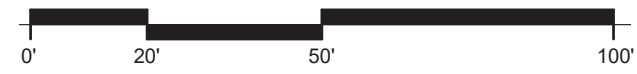




# ROOF LEVEL



- SHARED PROGRAM
- ACADEMIC PROGRAM
- ENTERPRISE PROGRAM
- SHARED B.O.H
- CIRCULATION SPACE
- VERTICAL CIRCULATION



## KAD 10/07/2019 Meeting Notes

- Director of Planning and Wellness position has been tabled/delayed
- Matt Lee thanking VPI Robinson for trusting KAD to leading/completing the efforts on Building One
  - Matt Lee asking other KAD faculty if they are okay with moving forward without the Director position
  - Temporary arrangement until Interim Dean position is confirmed through PBC is for the work related to Building One is going through Matt Lee
  - VPI Robinson: would it be possible for the Interim position to be official within the Fall semester timeframe?
    - Diana: the expedited process for approving the interim Dean position will probably take until January.
- General questions/comments:
  - President Moore: when there are complex facilities questions, should it be brought forward to PBC by VPA Mendoza?
    - Hoffman: We will eventually need for a representative from enterprise to address the KAD questions/needs? It seems that much of the anxiety over Building One is concerned with enterprise.
  - Expectations for meetings moving forward
    - VPI Robinson: probably at least one meeting a week.
- Answers to KAD's extended list of questions
  - Item 1 KAD academic office:
    - 13 offices including Athletic Training Office, Division Assistant Workroom,
    - Each is for a single faculty member (100 sq ft)
    - Conference room seats about 10-15 people
    - Nick Carr: asking whether the 117 sq ft room will be big enough for all of the adjunct faculty? --As hotel swing room, the idea was for three workstations despite the small space.
  - Every new building or remodeled building on campus that costs over \$5 million has to provide a "Mother's Room"/lactation room.
  - Item 9-10: Jessica Kaven: **As a division, would there be need to be a division office? Isn't this a District standard?** – VPI Robinson: might be able to place it where the membership office for enterprise is currently listed.
  - Item 11: Question about allowing for growth of programs?
    - Gaspar: difficult to pin down exact number of full-time faculty/adjunct faculty.
  - Athletic Training/Weightroom Questions
    - Athletic Training Room: built to fit the particular equipment needed by the trainers.
    - Weightroom: 1,449 sq ft
      - Nick Carr: worried that the glass wall in the weightroom is unnecessarily shrinking the usable space because some equipment could not be placed next to the windows.
  - How many lockers are in academic section?

- How many showers are in academic section?
  - Three showers in student restroom.
  - There will be outside showers for the swim team
  - There are 9 showers in men's enterprise room, 10 showers in women's enterprise restroom
  - Jeanne: it looks like enterprise locker rooms are much bigger.
    - **What are the projections for the Enterprise Fitness Club that would justify the current space allocation?**
  
- **Needed additions to the KAD questions list**
  - Amount of locker space for students
  - Amount of shower space for students
  - What are the projections for the Enterprise Fitness Club that would justify the current space allocation?
  
- Next-Step Process for Meetings
  - The architect will answer everything on the KAD list that they have the answers to.
  - There will be links to a PDF document.
  
- Calendaring meeting
  - Matt Lee will take over calendaring the meeting.



## KAD B1 List of Questions/Concerns re: Programming

### Agenda Item A.

3. Are all instructional spaces aligned with Cañada College enrollment minimums?
4. Please confirm Level 3 (rooftop) will be available for Cañada College academic purposes
5. What is the plan for Cañada students and student athletes for in and out access Help desk/log in?
7. Will Cañada College Academics begin utilizing the building before or at the same time as the Enterprise?
8. Please confirm Cañada Academics will have first right of refusal regarding all scheduling of B1 space
12. Will there be a dedicated Hall of Fame area in B1?
- 14.B. When do we begin programming the room (equipment/IT/Flooring setup)
19. Will there be log-in capability for fitness classes? (Similar to what is used in the learning center and previous B1)
20. Will there be an enclosed area to fit 20-30 people on the general fitness floor as a jump-off point Canada College Instruction?
21. Does the Cañada Athletics Fitness floor meet minimum size requirements for 45 student athlete (capacity including machinery/apparatus)?
22. Please provide specific plan, square footage, and storage space for Cañada Instructional Items
  - a. Basketball hoops (6)
  - b. Volleyball poles/nets
  - c. Instructional Equipment –Uniform/ Apparatus
24. Is the 35-person SMART classroom dedicated to Cañada lecture/ Instruction
  - \*All instructional spaces within B1 should be able to serve all Cañada students
25. Spin room and all other activity rooms need to hold a min of 35 students
26. Spin room must account for space to hold 35 apparatuses for instruction
27. Will Cañada College KAD have a designated Laundry Room equipped with 2 washers and 2 dryers

KAD Department Meeting  
Monday – October 14, 2019  
Building 9 – Room 9-123

SEE ATTACHHED HAND OUT

**Attendees:** President Jamillah Moore, VPI Tammy Robinson, Matt Lee, Jeanne Stalker, Erik Gaspar, Michael Hoffman, Vera Quijano, Nick Carr, Jack Herbert, Swinerton, Chris Stugar-Fritsch, Ana Miladinova

Note Taker: Loretta Davis Rascon, VP Classified Senate

KAD B1 List of Questions/Concerns re: Programming

There was a verbal reading and review of each of the questions below and discussion of the KAD viewpoint and the administrators/district managers viewpoint

Cañada College District Construction Managers gave comments making the “Enterprise” space in the KAD Building Construction the priority with the “Academic” space secondary. The potential 9,000 paid San Mateo Athletic Club members have more locker and shower space than the Cañada College students.

Who decided the building space allocation between “Enterprise” and “Academic” space

#3. Are all instructional spaces aligned with Canada College academic purposes?  
Comment – No room for future expansion for students

#4. Please confirm Level 3 (rooftop) will be available for Canada College academic purposes.

#5. What is the plan for Canada students and student athletes for in and out access Help Desk/Log In?

#7. Will Canada College Academics begin utilizing the building before or at the same time as the Enterprise?

#8. Please confirm Canada Academics will have first right of refusal regarding all scheduling of B1 space

#12. Will there be a dedicated Hall of Fame are in B1.

#14.B. When do we begin programming the room (equipment/IT/Flooring set up)

Enclosed space for classes – important to have for the student’s

#21

Can we fit 45 students in the weight room?

1,449 square feet - Can you combine training rooms – NO that is for injuries

How much equipment are we putting in each room?

Erik: Space is a little small for all the equipment and the athletes

**ACTION:** May have to compromise

WEIGHT ROOMS AT THE COLLEGIATE LEVEL ARE STANDARD – SPACE IS TIGHT AND MORE SPACE REQUESTED – CONCERN/ISSUE FOR MEN’S SOCCER AND BASEBALL

Matt: Space at the top of the stairs – CAN WE CREATE AN ENCLOSED AREA

Tammy: We need line of sight to see occupants in case of emergency  
Matt visited the weight room at CSM is the space being used efficiently.  
How many squad racks – CSM row of 5

Erik – make sure the space is being used  
45 students get 45 square feet plus equipment that is big and bulky  
Collegiate athletes – they are big men  
SAFETY ISSUE

#### #22 STORAGE FOOTAGE, INSTRUCTIONAL ITEMS

Jack:  
Volleyball one main court and two cross court  
Erik: Courts on one of the survey – there is an interest in Badminton for Women  
Can we still look for Badminton Lines – Can we ADD PERMANENT BADMINTON LINES  
Shows in Title IX interest  
Second highest interest in women’s sports

Tammy: The lines can be added later

Jack: It is struggle with all the lines, and there is a color drawing about the lines

Jamillah: Was not aware that Badminton was an interest

Jack: Must look at what the sleeves are for Badminton

ACTION ITEM: Look at the slab adjustments for Badminton – Will we want one or two courts

Jamillah: As long a we have storage—can we get free-standing badminton boundaries markers

Matt: Question on the bleachers. In thinking about the previous gym and having 700 seats per side and CCSM an Skyline have. CAN WE INCREASE THE SEAT NUMBERS – SOLUTION BRING IN TOURNAMENTS HOWEVER OFTEN WE NEED THE EXTRA

Tammy: Put in the Program Review for Portable Bleachers Resource Costs for both sides

Erik: Question on drawing – 9 rows – How many people fit 281 seats in the bleachers

Jeanne Why can’t we add permanent -BECAUSE OF THE DOORS  
INTERFERES WITH PRACTICE SPACE AND CROSS COURTS

94’ TO 96’ FEET LONG – 1,400 SEATS IN THE OLD BUILDING AND IS 1/8 LESS

Tammy:

290 double 289 X 2 =

1,400 seats in the old gym

750 per side

CSM Comparison – Each person 2 feet of width – CSM has 12 rows

CONCERN ABOUT THE PORTABLES – is there enough room



Can Bleachers go behind the  
WHERE WILL THE PORTABLE BLEACHERS GO  
We are going backwards with the new building – CONCERN

## 22C STORAGE QUESTIONS

Where will all of the team's uniforms go?  
Basketball, Volleyball, Boot Camp

REFRESHER ON EQUIPMENT STORAGE

9 Feet by 30 or 40 Feet

Basketball hoops, Volleyball nets

What about Uniforms and teaching apparatus

THE STORAGE SPACE IS LESS THAN HALF OF THE SPACE WE HAD BEFORE

Smaller offices

Jack: Also need custodial

WHO WILL DETERMINE WHO GETS WHAT STORAGE SPACE?

Team Room 174 – Visitor Team Room took storage space

ERIK: Common theme we are encumbered by square footage  
Underlying current because the space is being given to SMAC – Enterprise  
Why are we NOT pulling space from SMAC – Enterprise Space  
IMPORTANT TO NOTE

JAMILLIAH AND ATHLETIC INSTRUCTORS

December 2016 Meeting – space removed and space shrunk

WHO MADE THIS DECISION TO DECREASE COLLEGE SPACE?

No answers on why Team Rooms went away

CURRENT BUILDING DOES NOT ACCOMMODATE ALL OF OUR SPORTS

Current rooms cannot accommodate Canada College current athletic teams

QUESTION

What is the plan for Athletic Team Rooms?

We are still one short for team rooms

KAD requested a baseball team room in 2014

An additional team room required

Volleyball, Basketball,

Soccer and Baseball on the Field

Men's and Women's Soccer share the room in the Fall

Soccer Men

Soccer Women

Chris Team House One for Team

Two largest teams are sharing rooms

Baseball and Men's Soccer Share

No Room for Expansion

NEED ONE MORE TEAM ROOM – AS WOMEN’S SOCCER WAS LEFT OUT

ANOTHER ISSUE: Where do we store all of these things?

#24 – Is the 35-person SMART classroom dedicated to Canada lecture/Instruction

\*All instructional spaces within B1 should be able to serve all Canada students – Yes 35 students

#25 – Spin room and all other activity rooms needed to hold a minimum of 35 students - Yes

#26 – Spin room must account for space to hold 35 apparatuses for instruction

#27 What about Laundry Room?

Erik: BIG MISTAKE – DIFFERENCE BETWEEN THEORY AND PRACTICALITY  
We need our own space for laundry

Chris: Field Laundry

Enterprise conflict for Laundry Room

“Can’t always get what you want”

Footprint and budget does not always allow for all we want

2013, 2014, 2015, 2016 Compromises based on the decisions made

No more footprint or budget

\$88 Million

\$120 Million Total Cost

“The structure is limited”

What are we giving up for more Team Rooms

2015 BCA Plan – more team rooms before we added field

13 faculty offices versus 6 offices

Decision made to make the AD Smaller so there could be two offices of 100 square feet

What about the compromise for SMAC Space

Jeanne Stalker: Our team rooms and locker rooms seem so small compared to Enterprise Locker Rooms

Student and Team Room is one-quarter

Can the college take some of the Enterprise Rooms

Chris: We have 2,000

Proportions usage by usage

9,000 member – 4 times members versus 2,000 students

Utilization

How do you know that 9,000 members will enroll?

Trying to advocate as requested

Planning on 9,000 members in Canada SMAC Model

Jamillah: Consistent

Has this plan been vetted before the oversight committee

Are we making the SMAC overriding priority  
Address one less Team Room

Let's get clear

PBC there will be a presentation by Auxilliary Services – questions on Wednesday



## KAD B1 List of Questions/Concerns re: Programming

October 14, 2019

### Agenda Item A.

3. Are all instructional spaces aligned with Cañada College enrollment minimums? [Currently, the spaces adhere to minimums. The administration also understands that programs will need time to grow.](#)
4. Please confirm Level 3 (rooftop) will be available for Cañada College academic purposes. [Rooftop activities including yoga, Queenax or TRX equipment, pickleball courts and running track areas are available for student use to be shared/coordinated with enterprise use](#)
5. What is the plan for Cañada students and student athletes for in and out access Help desk/login? [At CSM, students' registered for classes receive a fob that allows access during the specified time and date of the class. Students fob in and have access during their specified classes like any other lab space. Students who are members have access any time the club is open.](#)
7. Will Cañada College Academics begin utilizing the building before or at the same time as the Enterprise? [Academic programs come first. Once the building is completed and safe for entry, KAD can begin to move into the space.](#)
8. Please confirm Cañada Academics will have first right of refusal regarding all scheduling of B1 space- [The Dean sets the schedule with faculty and establishes the course schedule. No academic or sporting event for the college has ever taken place because of the athletic club. Please consult with the Dean Andreas Wolf from CSM](#)
12. Will there be a dedicated Hall of Fame area in B1? [The Hall of Fame is a key component for alumni and campus history. We will work with facilities to locate the most appropriate place for the special awards.](#)
- 14.B. When do we begin programming the room (equipment/IT/Flooring setup)-[As the building will not be ready until 2021, equipment selections will not be made and finalized until spring 2020. At CSM, we worked closely with Mikel Schmidt, professor of Kinesiology alongside a consultant to make most equipment selections and do the layout of the main fitness floor. Individual rooms dedicated for instructional or enterprises use will be done at the same time with direction given by each team. I would anticipate a similar process for B1.](#)
19. Will there be log-in capability for fitness classes? (Similar to what is used in the learning center and previous B1)
20. Will there be an enclosed area to fit 20-30 people on the general fitness floor as a jump-off point Canada College Instruction? [There is no enclosed area on the fitness floor. At CSM, when there is a class, equipment used for that class is designated with signage and members are directed that a class is using that equipment.](#)
21. Does the Cañada Athletics Fitness floor meet minimum size requirements for 45 student athlete (capacity including machinery/apparatus)?
22. Please provide specific plan, square footage, and storage space for Cañada Instructional Items
  - a. [Basketball hoops \(6\) \(2\) moveable for competition and \(4\) fixed for crosscourt](#)

practice

- b. Volleyball poles/nets (2) nets, (1) used during competition or (2) practice courts
- c. Instructional Equipment –Uniform/ Apparatus

24. Is the 35-person SMART classroom dedicated to Cañada lecture/Instruction

\*All instructional spaces within B1 should be able to serve all Cañada students

Yes

25. Spin room and all other activity rooms need to hold a min of 35 students-Yes

26. Spin room must account for space to hold 35 apparatuses for instruction-Yes

27. . Will Cañada College KAD have a designated Laundry Room equipped with 2 washers and 2 dryers The new B1 has a single location for washer/dryer on the first floor laundry room 109 which has 2 washing machines and 3 dryers. This room is not dedicated only to academic use



## KAD Division B1 Meeting

Agenda  
Monday, October 14, 2019  
4PM – 5PM  
Building 9, Room 123

<b>AGENDA ITEM</b>	<b>PRSENER</b>	<b>TIME</b>	<b>PROCESS</b> (Action, Information, Discussion)
A. KAD B1 List of Questions/Concerns re: Programming	KAD Division & Administration	30 min	Discussion
B. KAD B1 List of Questions/Concerns re: Schematics (Continued)	Jack Herbert / Swinerton	25min	Discussion
C. Additional Discussion Items	All	5 min	Discussion
Adjournment			

**Herbert, Jack**

---

**From:** Moore, Jamillah  
**Sent:** Wednesday, October 16, 2019 2:00 PM  
**To:** Lee, Matthew  
**Subject:** FW: Thank you!

Hello Matt,

This is what I sent out Monday evening.

Thanks  
Jamillah

---

**From:** Moore, Jamillah  
**Sent:** Monday, October 14, 2019 9:19 PM  
**To:** Miladinova, Ana <miladinovaa@smccd.edu>; Quijano, Vera <quijano@smccd.edu>; Lorenz, Coleen <lorenz@smccd.edu>; Carr, Nicholas <carrn@smccd.edu>; Jimenez, Cindy <jimenezc@smccd.edu>; Peltz, Ashley <peltza@smccd.edu>; Lucca, Tony <lucacat@smccd.edu>; Gaspar, Erik <gaspare@smccd.edu>; Osborne, Katie <osbornek@smccd.edu>; Jeong, Bryan <jeongb@smccd.edu>; Plummer, Gary <plummerg@smccd.edu>; Schmidt, Gheisa (Andrea) <schmidtg@smccd.edu>; Begley, Cassie <begleyc@smccd.edu>  
**Cc:** Robinson, Tammy <robinsontammy@smccd.edu>; Stalker, Jeanne T. <stalker@smccd.edu>  
**Subject:** Thank you!

Dear KAD

Thank you for taking the time to share your insights in our weekly meeting. As a result of our meeting today, we have updated the list of information and we will be working on those items for next week's meeting. As we continue to move forward, I appreciate the work being done in addressing the academic programs for KAD. I will await the minutes from our discussion today. But this is the information both Dr. Robinson and I got from today's meeting:

1. The Division needs at least one additional team room.
2. There a need for more storage space.
3. There is a need to look at a larger area for instructor specific classes.
4. There may a need to have a larger space for athletic training in order to accommodate our larger team sports.

Thanks  
Jamillah





## KAD Division B1 Meeting

Agenda  
Monday, October 28, 2019  
4PM – 5PM  
Building 9, Room 123

<b>AGENDA ITEM</b>	<b>PRSENER</b>	<b>TIME</b>	<b>PROCESS</b> (Action, Information, Discussion)
A. Addressing Meeting Minutes 11/19/16 12/23/16	KAD Division	5 min	Discussion
B. Follow-Up to Administration Four Takeaways	Administration	15 min	Discussion
C. 1 <sup>st</sup> Floor Training Room Plan – Exos	Athletic Director	10 min	Discussion
D. Gymnasium	Athletic Director	10 min	Discussion
E. KAD B1 List of Questions/Concerns re: Schematics (Continued)	Jack Herbert / Swinerton	15 min	Discussion
F. Additional Discussion Items	All	5 min	Discussion
Adjournment			

**KAD BUILDING CONSTRUCTION MEETING MINUTES**  
**Monday, October 28, 2019**  
**Building 9 – Room 123**

**ATTENDEES:**

Tammy Robinson, Jack Herbert, Director of Construction Management, Chris Strugar-Fritsch, Director of Capital Projects, Matt Lee, Jeanne Stalker, Vera Quijano, Erik Gaspar, Katie Osborne, Diana Tedone, Andrea Smith, Ana Miladinova

**NOTE TAKER:**

Loretta Davis Rascon

Handouts addressed KAD Faculty and Staff KAD Building 1 construction concerns, inadequacies, and lack of NCAA compliance for sports teams and the large amounts of space dedicated to for-profit EXOS Enterprise operations versus academic, classroom, team rooms, and student locker room space. The same topics were discussed that President Jamillah Moore had as her takeaways. Issues and concerns were addressed and the minutes show that issues were yet to be resolved.

Tammy Robinson

From the last meeting they were talking about one additional team room and storage areas where we can capture storage. Where can we add storage?

Storage areas for instructor specific classes.

We can drill down to understand what the needs are.

Weight room was discussed for the athletic training. This is not a new issue, the space increased.

Window dressing/glazing was also an issue. Division voiced what the view in will be. Need for elevation and glazing on the windows.

Jack Herbert

The diagram shows space with scaled equipment. How does KAD want to use the room and show how quickly the room can be filled?

Matt Lee

Discussed with CSM and Skyline AD's regarding square footage of their weight rooms. KAD's perspective is that the plan was not accurate.

There is 1,500 Square feet of usable space.

Katie Osborne

Pictures were submitted on how the room should look. 30 athletes sharing 3 racks would take too much time for training. Is the priority to witness training demonstration in one location and then leave to use other equipment?

Are there other rooms that are laid out without the input from KAD instructors?

The size of the room is not sufficient.

The room would not work for 28 team members.

5 people per rack

Jack Herbert

There are no secret rooms.

Layouts were for power and data and where they go on the floor. Assumptions were made  
Tom Bauer says there will be a process.

Matt Lee

KAD needs to see what is going to be in each room, as it affects the KAD instruction.

Can we see what the actual layout will be? KAD instructors are required for the process as we are the athletic education experts.

Erik Gaspar

Are there any options besides what is shown on the blueprints once we get the actual, correct blueprints, as KAD has been shown different versions without giving input?

Jack Herbert

Allocations are based on student use. There are no plans to build walls. Coordination with SMAC and Academics get the priority. SMAC members know they do not have access to all of the floor all the time, depending on what the athletic training is required.

Can certain things be done in a classroom space and then have the students migrate to another area of the building?

What about the space for the classes prior to meeting to use actual equipment?

Tammy Robinson

Walls cannot be built once plans are submitted.

Katie Osborne

What about a physical partition that can separate instruction to exclude distractions? Is the privacy for the class a consideration? It is unusual for an academic class to be subject to external noise and distractions of the public sharing the classroom area. Is the space truly being utilized for instruction of the college students as the priority? Again, CSM KAD has other classrooms besides the Health and Wellness Building and students have come to Cañada to express their disappointment of having a new building but having to hold classes in the old building due to the inadequacy of the Athletic club rooms.

Intro to Weight Training Course is an example of a course that requires a quiet space for instruction with the demonstration of equipment. With all of this new space, why make changes to the teaching style? Old model, the fitness center was closed off for the orientation and then students walk to equipment and use the equipment. It is awkward to demonstrate and then go to another area of the building to use the equipment. Students might go to the equipment and injure themselves.

Tammy Robinson

Pick a room and tell her where the difficulties lie.

Katie Osborne

There are no diagrams on what the actual room will look like.

Erik Gaspar

Review of a triangle machine that needs space to use.

Can we use that space (suggest an AREA #) before class meets?

Request a partition to wall out space for class instruction.

Tammy Robinson

We will get to the planning of the space once the equipment is ordered. The equipment will be ordered last to ensure that the most up-to-date equipment is purchased.

KAD Group

Can we walk the space before the FF&E is ordered?

Tammy Robinson

Committed to walk the space before equipment ordered to get a sense of scale.

Jack Herbert

Difficult to wall or partition in an open space. Space can be walked while it is under construction with supervision.

Erik Gaspar

Maybe a corner works better to partition off.

November 16 diagram referral.

Some seating makes sense but maybe there is a 15 X 15 space where there is a glass partition that tucks in for the classes—not taking up space on the fitness. Can we be more efficient with the use of space versus seating?

Matt Lee

Are we correct in assuming that KAD can plan for the owned for “academics first” (Tammy).

Will there be an opportunity for KAD faculty to determine the partitioned space for class?

Item #3, there is a need for larger spaces for instructional.

Do we have a minimum square footage for the classroom? 15 X 15 is too small.

Erik Gaspar

A space done properly can be used for instruction and seating.

Need 1,000 square feet would be reasonable with an area where some type of privacy.

A screen or partition that can be used—use universal space.

Jack Herbert

Pony walls are an option that can be implemented when the space is built.

This is a good idea.

Jeanne Stalker

What is the usable square footage?

What is the square footage of the opening above the basketball court?

Is it 12,000 square feet of open space.

Jack Herbert



Building will take shape quickly and Herb will lead small groups when it is possible.

Matt Lee

Team rooms were planned 1 for 1 for each team.

Request for a team room to be put on a soccer field. How can we plan.

Question for Tammy, can this be done?

Jack Herbert

Requested that Matt draw up something for the soccer team room.

He dropped in a red rectangle to get the team room used by soccer and baseball.

Containers were \$150,000 plus.

Are there any other possibilities?

Fire department has limitations.

Matt Lee

Ongoing discussion for team rooms. Not enough space in the building, so other options need to be discussed.

Tammy Robinson and Jack Herbert agreed.

Vera Quijano

Is reallocating space from Enterprise to Instruction an option?

Jack Herbert

Can built ins be changed to give more lockers changing full-height lockers.

Erik Gaspar

If it is a team room, it should have full lockers and be attractive for recruiting athletes.

One team managing the space is the best scenario. What happens to teams when it is raining?

#### D. GYMNASIUM

Matt Lee

I reached out to Skyline and CSM Athletic Deans about the seating in the gym, spoke to CCCAA commissioner. What can we do to utilize space so we do not have to rent bleachers?

What do the bleachers look like? Renting bleachers is problematic. How could we get rented bleachers through the door? Mirror the bleachers and go to 600 seats and add bleachers before the doors.

Can we do fewer rows at certain points? Relocate the scoreboard.

KAD Faculty and Staff Attendees

It is frustrating for KAD to get a new building with fewer bleacher seats than the previous building without designer considering the NCAA requirements for basketball and other athletic teams. It is perplexing why a building designer would give fewer bleacher seats than the number in the former KAD building without consideration for NCAA requirements and equity with bleacher seating at Skyline College and CSM. This is an example of academics not being the priority of this new Bond Measure H funded academic facility.

Jack Herbert

District Construction Management commits to look at doubling the size of the bleachers seating.

Matt Lee

We need to review the best place for the scoreboard—for compliance to NCAA requirements to have 2 scoreboards. 3 Feet that extends below the bleachers. Hosting a playoff game is problematic. Current drawing show side hoops—stationery hoops are problematic and fixed.

Katie Osborne

Why do hoops need to be stationary? Side hoops were able to retract in old building. Can the hoops be moved left to right?

Jack Herbert

Matt will find an example to show of a different type of basketball hoops.

Tammy Robinson

Basketball court needs clearance.

KAD Faculty and Staff Attendees

Why was the building designed without consideration for NCAA requirements? Who created this design? Badminton courts are an issue versus basketball hoop location.

Erick Gaspar

When is the floor ordered? What are the colors?

Jack Herbert

Mike Reynoso former basketball coach worked on the colors.

Erik Gaspar

Can KAD be looped in when the color and logo are created?

Matt Lee

When in practice. Doors on the south end. Are those required?

Jack Herbert

Yes, exit requirement. Can't change the doors because the building is already being built.

Tammy Robinson

Do we want to add items for the next meeting?

Matt Lee

Will we have meetings with Tammy?

Katie Osborne

Address the size of the student locker rooms less than 200 square feet—seem inadequate.

Locker rooms are for dance students too.

Space does not seem adequate for students to change with the lockers.

Previously we had 2,000 square feet for the locker rooms.

Yoga class has 40 students, plus other classes that require showers.

Tammy Robinson

Suggest that we look at how we got to 200 square feet for the student locker rooms.

Other Issues

Badminton lines

Will we have sprung dance floor—specialized for dance?

Jack Herbert will provide for Matt.

Review and discuss dance rooms

Roof has additional space for classroom that is underutilized is an issue.













## KAD Division B1 Meeting

Agenda

Monday, November 4, 2019

4PM – 5PM

Building 9, Room 123

<b>AGENDA ITEM</b>	<b>PRSENER</b>	<b>TIME</b>	<b>PROCESS</b> (Action, Information, Discussion)
A. Proposal – New Start Time for B1 Meetings	Matt Lee	5min	Discussion
B. Follow-Up to Administration Four Takeaways	Administration	25min	Discussion
C. KAD B1 List of Questions/Concerns re: Schematics (Continued)	Jack Herbert / Swinerton	25 min	Discussion
D. Additional Discussion Items	All	5 min	Discussion
Adjournment			



**KAD BUILDING CONSTRUCTION MEETING**  
**Monday – November 4, 2019**  
**Building 9 – Room 123**

ATTENDEES:

Tammy Robinson, Jack Herbert, Director of Construction Management, Chris Strugar-Fritsch, Director of Capital Projects, Matt Lee, Ana Miladinova, Vera Quijano, Erik Gaspar, Jeanne Stalker, Jessica Kaven, David Eck

NOTE TAKER: Loretta Davis Rascon

A new time for the KAD Construction Meetings proposed for Mondays at 10am:  
November 18, November 25, December 2 (Tammy Robinson not available), December 9

Special Note:

Bond Oversight Committee Meeting  
December 5<sup>th</sup>  
3pm – District Office Board Room

Updates on President Moore's takeaways from the last KAD Construction Meeting on October 28, 2019 were reviewed and discussed:

Tammy Robinson requested that the issues be reviewed.

Matt Lee

Issue: Proposed space allocations between KAD Academic requirements to meet the same space or more space than KAD had in the demolished KAD Building 1.

Main issue is the amount of proposed space for KAD than on the plans that were presented in error but worked on without KAD faculty/staff participation and consultation, giving large amounts of space to Enterprise operations by EXOS?

Is having a Team room on the field plausible?

Facilities will need to address the issue of the location of the riser.

Matt Lee

Issue: Overall storage space inadequacy

Tammy Robinson

How much more storage space does KAD require and for what equipment?

Matt Lee

Additional storage space is required for academic swimming program equipment.

Where is the storage for academic/varsity swimming program, as the plans only refer to Enterprise storage space?

Jack Herbert

Storage has always been a problem.

The storage space was marked "**shared**" between Academic and EXOS/Enterprise operations.



Chris Strugar-Fritsch

Action Item: Get the SMAC pool storage at CSM information and compare to see if there is really room for both.

There is a big bin at the pool deck and whoever uses the pool uses the equipment.

How is equipment usage determined in connection with equipment purchasing?

EXOS uses equipment at SMAC at CSM.

200 Square feet of storage may have been designated to park the lift.

Vera Quijano

Dance storage is good.

Erik Gaspar

Pool deck—can more storage be added with delineations between the EXOS and Academic equipment?

What is EXOS going to store in the area and how much space do they need?

Cañada's goal is NOT to comingle. Goal is be efficient with the space.

VPI and District Facilities attendees were open to review requests; however, it is unclear how the space was initially prioritized and allocated as "shared" academic/enterprise space.

Tammy Robinson

College Athletic point persons to avoid conflicts—Mike Schmidt at CSM and Andreas Wolf at Skyline

Jack Herbert

Diana Thomas is still with EXOS and is at SMAC and offered to collaborate to help with Cañada/EXOS integration.

Tammy Robinson

Is it possible to extend and bring in a portable storage area? It is 1,000 square feet.

Jack Herbert

Will find out how the facilities lift will be accommodated in the KAD Building.

Matt Lee

Be mindful that sports will be added at Cañada College—women's basketball, badminton. Part of the purpose of the new building is for KAD class and team expansion.

What is the outcome of expanding the space for the Athletic Training Room, as currently it is very questionable whether space is adequate for team athletes, required equipment, and storage space?

Erik Gaspar

Plan the storage space and identify key pieces of equipment that will be going into the storage.

Need to resolve where much of the loose apparatus like free weights, medicine balls, stability balls are going to be stored and whether the storage will be locked. The current SMAC/CSM model has equipment scattered at CSM buildings and field areas.

Tammy Robinson

We can visit SMAC to see how they do it. Tammy asked Erik to be specific on what needs to be stored and proposed storage area in season and out of season.

Another box on the field will give a dedicated home.

Team rooms have a different layout—how much storage is needed?

KAD Instructor – PLEASE GET NAME FROM JEANNE

Most athletic programs have one designated space for team equipment. Right now, everyone is only making do. There is usually an accessible equipment room for teams/classes.

Matt Lee

Plans of the general first floor area

Looking at the plans

Into the general student locker room size and efficiency

Previous KAD building had 2,100 square feet for locker rooms. New KAD building proposes 200 square feet for academic/team locker rooms.

What is the process for sharing Enterprise Locker Rooms with Academic/Team locker rooms?

Can the locker room be fitted for one large team locker room?

In the November 14, 2016 Presentation, there were shared locker rooms. The original plan changed.  
Old 1257 squad 2144 square feet

Jack Herbert

All meetings were shared space and then it turned into dedicated space for ENTERPRISE

Tom Bauer and Jose Nunez said the color-coded drawings were incorrect. The architect got it wrong.

Erik Gaspar

Issues: Locker room space for students

Access for students, athletes

Student general population

Are 4 showers enough for the students?

Laundry shared

Family room shared

Lactation room shared

Lockers **only** for Enterprise

Space for future KAD growth in the pool and academic programs—badminton

Tammy Robinson

“Enterprise is second to the academic programs.”

Work towards solutions allowing coexistence that serves everyone.

Share space. Students can be in the locker room with the community.

Miscellaneous: However, do students want to share college facility space with such large crowds?

Jeanne Stalker

There are Equity issues involved for students to be able to share “enterprise” space. Students first is the priority of the Measure H Bond funds.

Loretta Davis Rascon

Not everyone in the surrounding community wants to join private, for-profit club. When I worked at a Woodside venture capital firm, one of the partners took the fitness class and used the facilities without any type of club membership. The community members are being taxed to fund the academic sports that are open via class registration and financial aid if warranted. The Cañada community market is different than the CSM community market. Do we have adequate roads to accommodate the traffic for projected membership and environmental impact?

Matt Lee

There are also issues of instructor locker room access for male coaches teaching female athletes and female coaches teach male athletes. Can a gender-neutral corridor be built to access team athletes by coaches of either gender?

Has the Gender-Neutral Restroom facilities law been addressed?

Jessica Kaven

Move the entrance and don't lose the locker room space and both genders can access the space  
BECOME ALL GENDER. Lose the flow to the restroom

Chris Strugar-Fritsch

Priority was to keep access to and from the pool area  
CSM does not have separate rooms for water polo team.

Issue: TITLE IX building – team locker room access

Men's coach for a women's team and a Woman Coach for a Man's team

Erik Gaspar

When allocating space, think 10 years down the line for expansion purposes. How does Enterprise space fit into the KAD building expanded space in connection with Bond Measure H funding for the new academic building purposes?

How does current bleacher seating compare with bleacher seating provided for sports teams at CSM and Skyline?

Matt Lee

A footprint of the weight room is requested.

Jack Herbert

Visit the issue of sharing the Enterprise Locker Room  
What are Team Room issues and how can we resolve them?

Tammy Robinson

Big L Space – build differently for line of site and liability issues.

Jack Herbert

It is doable—the inside can be reconfigured.

Erik Gaspar

One Team Room is getting replaced with a team room in the baseball field.

Matt Lee

Larger discussion can we relocate the Mother's Room. Note a toilet cannot be in a Lactating Room

Lactating Room

Sink required in lactating room – Gender neutral

Space can be allocated in the women's locker room

NEW LEGISLATION GOES INTO EFFECT ON JANUARY 1, 2020

One way we can get to the 2,000sq footage

OPTION B

Expanding the Varsity Weight Room

What would it look like making the General Exercise Room?

Erik Gaspar

Hits the space parameters for all the teams

Find a way to extend square footage

Change the Varsity Weight Room

Multi-purpose room

Take \_\_\_\_\_ Room from Enterprise

Issue: 35,000 square feet required by KAD to get back to original KAD space in the former Building 1

Matt Lee

Issue: Student Log in to Fitness Center for Academic Class Credit

Type in G# to log

Instructional Issues

Is there a Kiosk capability to track attendance – weekly standard of attendance?

Do we have a place where that log in technology can be implemented?

Space required to track students

How do they do it at CSM?

Certain parts of the campus use student check in technology

SMAC log in is 10 years old—what will college do?

Jack Herbert

Hoop off the wall – extends out and can be pushed back

Matt Lee

Issue: NCAA standard conforming number of bleacher seats

Why would we design a building with fewer bleacher seats than in the former KAD building?

What was the process of determining the number of seats for the bleachers?

What was the process of the building design that eliminated so many bleacher seats?

Rental option is awkward and there is the uncertainty of getting rental bleachers into the facility.

It also places additional costs that are unnecessary with a new, larger KAD building.

Goal: Maximize seating with current unchangeable aspects of building design.

Jack Herbert

Will review the design for the bleachers to fit around the hoops and will maximize the number of seats.

Erik Gaspar

What type of basketball hoops will work in the space to preserve badminton courts?

Problem with Badminton Teams – like Skyline’s situation

Tammy Robinson

What is the minimum number of courts for badminton?

Six was the answer from attendees

Jack Herbert

Asks Matt to send sketch the type of basketball hoop he is referring to and send to me and also to Tammy.

What is the best way to move forward?

Tammy Robinson and Matt Lee will review issues and follow up on decisions that need to be made for communication to KAD and administration to address all concerns, resolve all items with issues.

Matt Lee

Issue: Second floor – weight room move-  
2,084 square feet

What happens to the weight rooms on the first floor?

First floor weight room would be used for instruction

Issue: Lactation Room location resolution

Miscellaneous

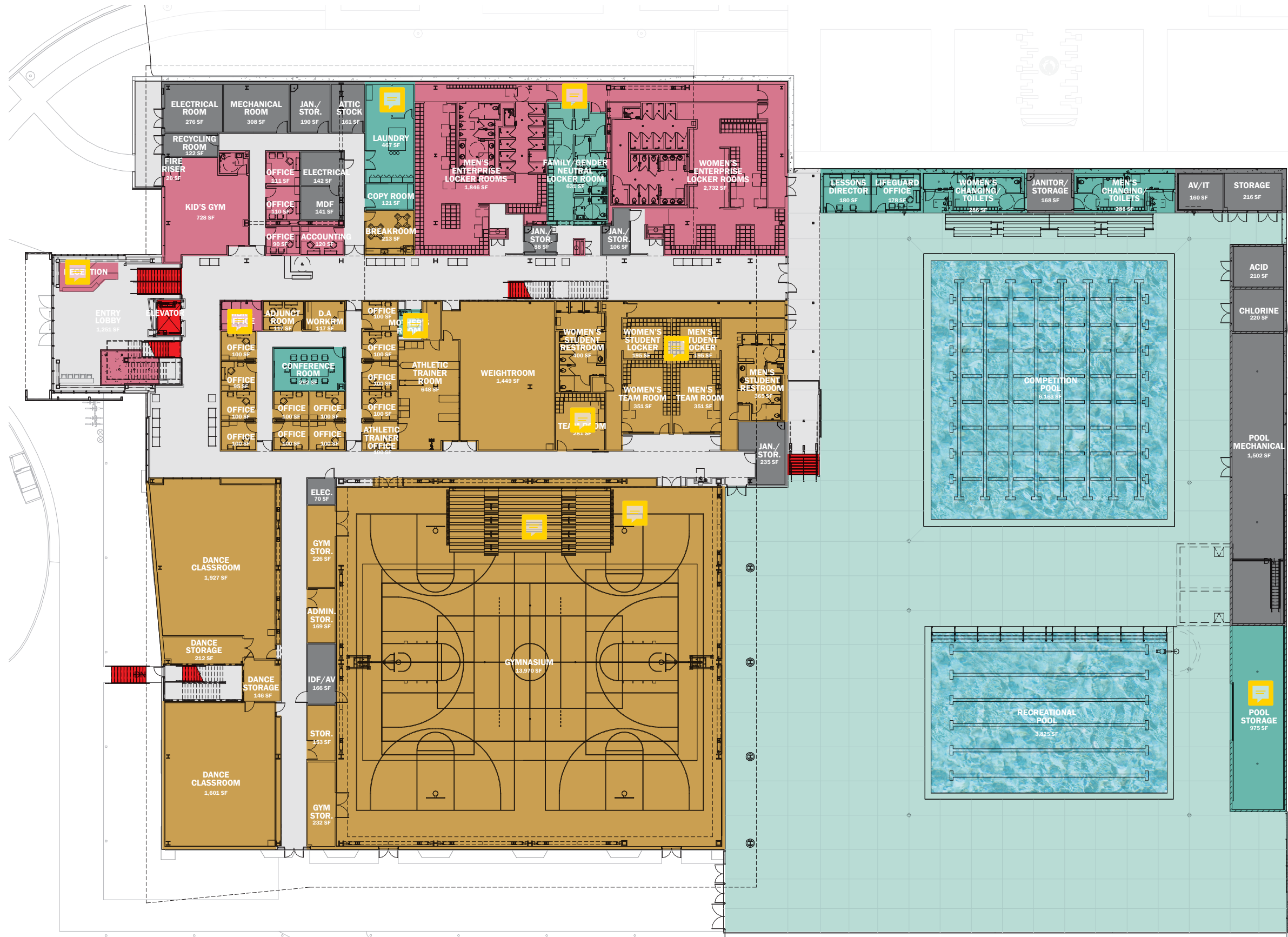
Who designed this building and how were the priorities established in accordance with Bond Measure H requirements? Are EXOS/Enterprise requirements in conflict with Academic requirements? Has the Bond Oversight Committee been given the details of the space being given to EXOS/Enterprise? Were the Enterprise for-profit building operations discussed with the Bond Oversight Committee so that a clear management of the Bond funds were communicated as they are connected to the fiscal management of the District, which is being discussed at college meetings?

Why are outside janitorial employees cleaning a San Mateo County building?

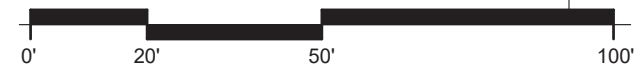
Share locker rooms to fit Cañada future growth for local Concurrent Enrollment Students and possible athletic team rental from the college versus EXOS enterprise operations.

High school fitness classes



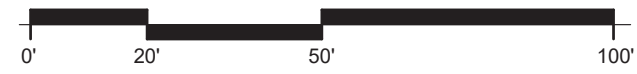


- SHARED PROGRAM
- ACADEMIC PROGRAM
- ENTERPRISE PROGRAM
- SHARED B.O.H.
- CIRCULATION SPACE
- VERTICAL CIRCULATION





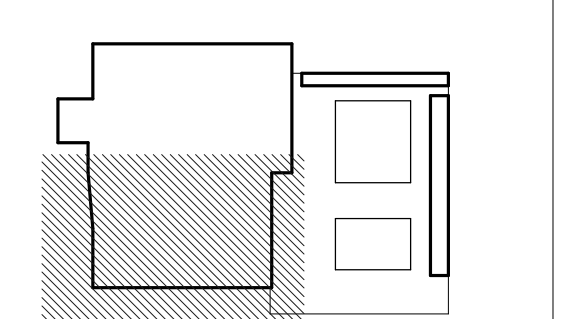
- SHARED PROGRAM
- ACADEMIC PROGRAM
- ENTERPRISE PROGRAM
- SHARED B.O.H
- CIRCULATION SPACE
- VERTICAL CIRCULATION



REVISION		
NUMBER	DATE	DESCRIPTION

IDENTIFICATION STAMP  
 DIVISION OF THE STATE ARCHITECT  
 APPLICATION # 01-116897

AC: FLS SS  
 DATE: \_\_\_\_\_



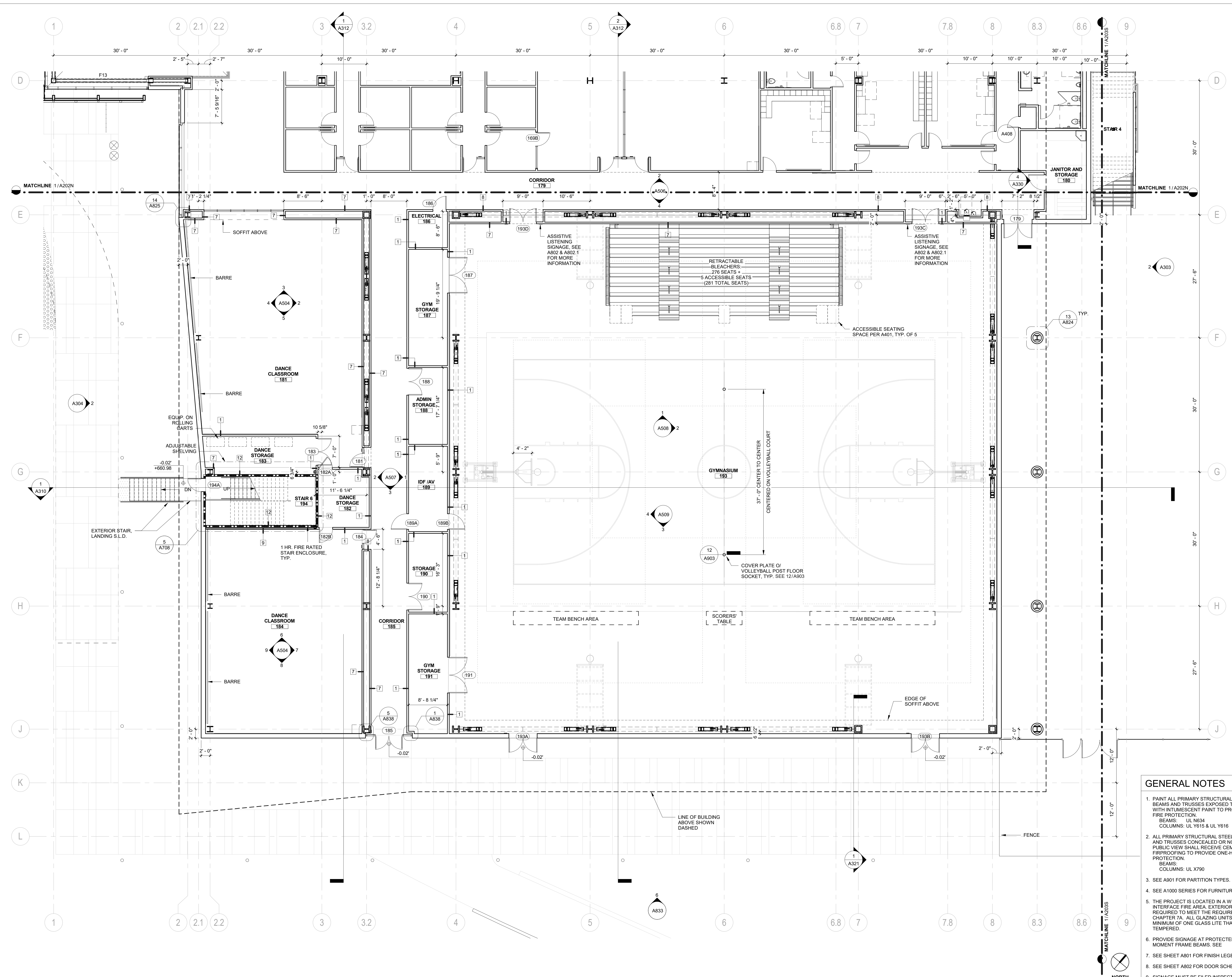
ISSUE: **INCREMENT II PERMIT SET**

DATE: **02/20/2019**



SHEET TITLE:  
**FIRST FLOOR PLAN - SOUTH**

SHEET NUMBER:  
**A202S**



**GENERAL NOTES**

- PAINT ALL PRIMARY STRUCTURAL STEEL COLUMNS, BEAMS AND TRUSSES EXPOSED TO PUBLIC VIEW WITH INTUMESCENT PAINT TO PROVIDE ONE-HOUR FIRE PROTECTION.  
 BEAMS: UL N634  
 COLUMNS: UL Y615 & UL Y616
- ALL PRIMARY STRUCTURAL STEEL COLUMNS, BEAMS AND TRUSSES CONCEALED OR NOT EXPOSED TO PUBLIC VIEW SHALL RECEIVE CEMENTITIOUS FIREPROOFING TO PROVIDE ONE-HOUR FIRE PROTECTION.  
 BEAMS: UL X790  
 COLUMNS: UL X790
- SEE A901 FOR PARTITION TYPES.
- SEE A1000 SERIES FOR FURNITURE PLANS.
- THE PROJECT IS LOCATED IN A WILDLAND-URBAN INTERFACE FIRE AREA. EXTERIOR MATERIALS ARE REQUIRED TO MEET THE REQUIREMENTS OF CBC CHAPTER 7A. ALL GLAZING UNITS SHALL HAVE A MINIMUM OF ONE GLASS LITE THAT SHALL BE TEMPERED.
- PROVIDE SIGNAGE AT PROTECTED ZONES FOR ALL MOMENT FRAME BEAMS. SEE
- SEE SHEET A801 FOR FINISH LEGEND.
- SEE SHEET A802 FOR DOOR SCHEDULE.
- SIGNAGE MUST BE FILED INSPECTED PER CBC 11B-703.1.1

**1 FIRST FLOOR PLAN - SOUTH**  
 1/8" = 1'-0"