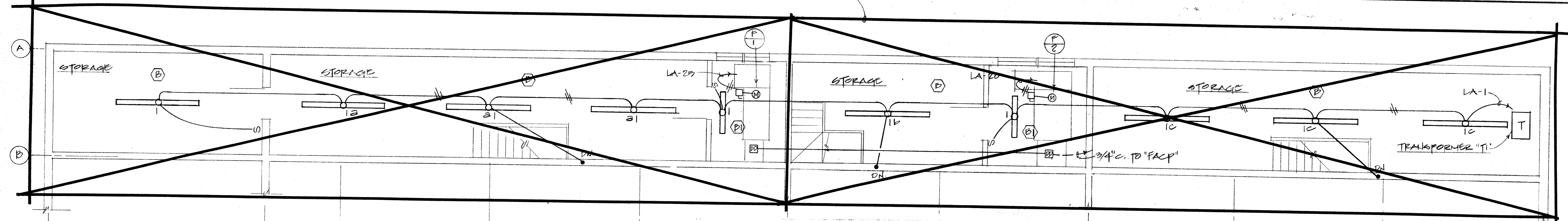
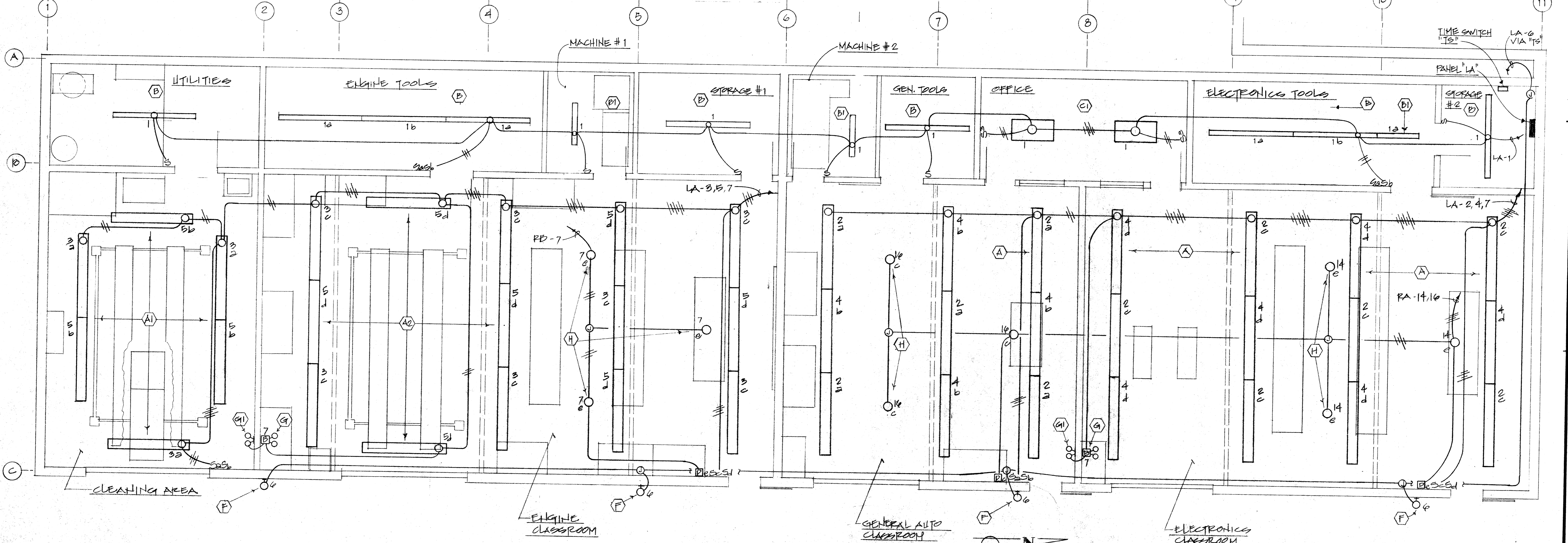


OSA Structural Safety Sect.	CALIFORNIA STATE ARCHITECTS State Fire Marshal	OSA Access Compliance Sect.
IDENTIFICATION STAMP Department of General Services Office of the State Architect [Stamp: 53721] Structural Safety Section Appl. # 53721 [Signature]	APPROVED [Signature] 11-14-90	OFFICE OF THE STATE ARCHITECT ACCESS COMPLIANCE SECTION 53721 DEC 14 90 APPLICATION FOR W. Joe Bolter NO.

OMIT



SECOND FLOOR PLAN - LIGHTING, POWER AND SIGNAL
SCALE: 1/4" = 1'-0"



FLOOR PLAN - LIGHTING
SCALE: 1/4" = 1'-0"

KELLER AND DASEKING - ARCHITECTS
 WALTER L. KELLER A.I.A.
 WILLIAM R. DASEKING A.I.A.
 825 OAK GROVE AVENUE
 MENLO PARK, CA 94025-4152-5586
 P. 1534
 [Signature]
 [Stamp: K D]

AUTOMOTIVE CLASSROOM BUILDING
 TOILET ROOM RENOVATIONS
SKYLINE COLLEGE
 SAN MATEO COUNTY COMMUNITY COLLEGE DISTRICT

8906
 3-12-90
E-2
 38 of 41