

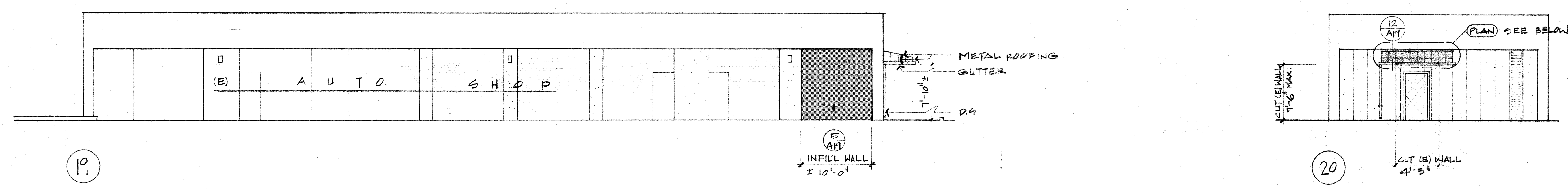
IDENTIFICATION STAMP
Department of General Services
Office of the State Architect
Structural Safety Section
App. # 53721 J/SF
Checked by

S.P.M. - STATE FIRE MARSHAL

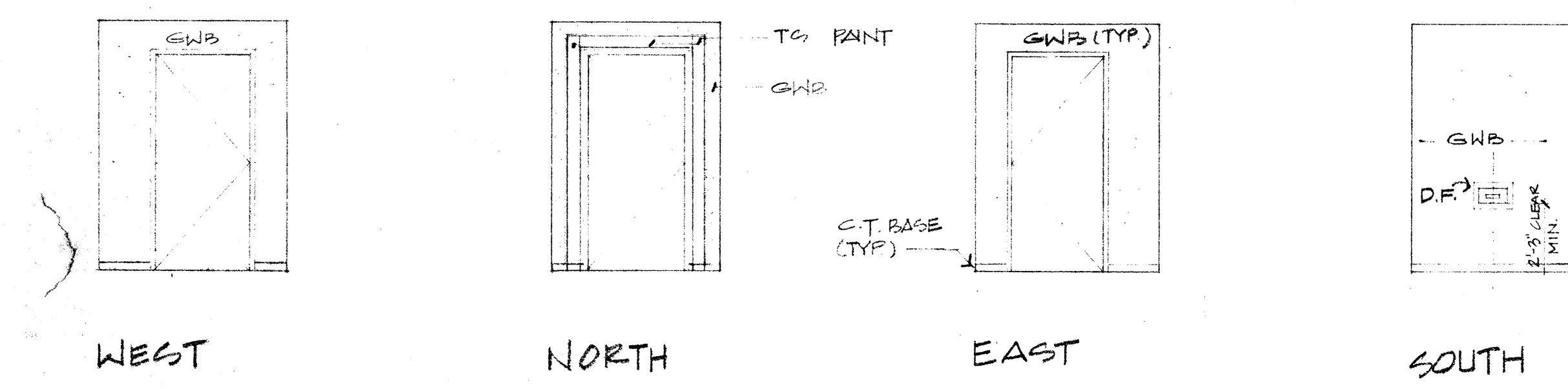
APPROVED
[Signature]
12/14/90

QSA - ACCESS COMPLIANCE SECT

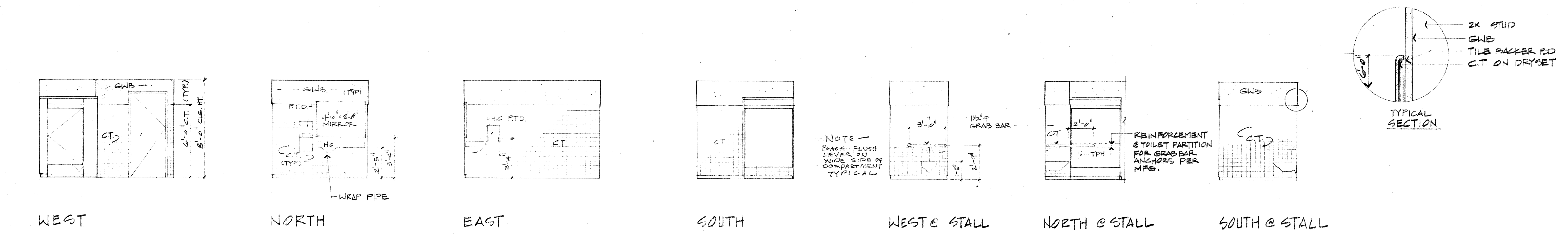
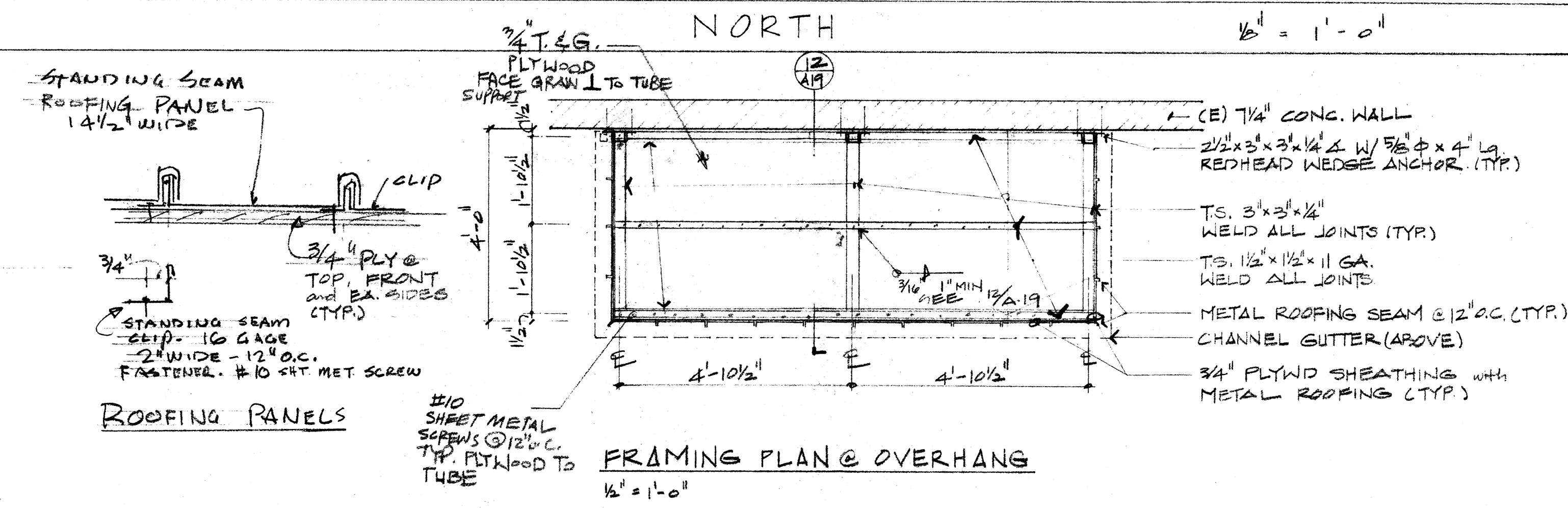
OFFICE OF THE STATE ARCHITECT
ACCESS CODE 1104
53721 DEC 14 '90
APPLICATION PER # 200 0000
NO. 1104



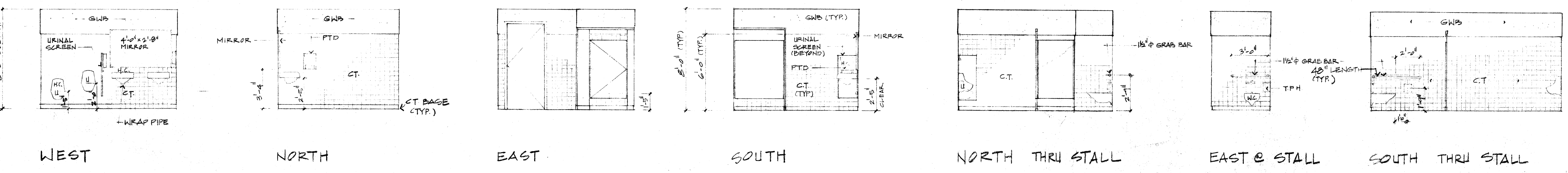
EXTERIOR ELEVATIONS - EAST



INTERIOR ELEVATIONS - VESTIBULE 1/4" = 1'-0"



INTERIOR ELEVATIONS - WOMEN'S TOILET ROOM 1/4" = 1'-0"



INTERIOR ELEVATIONS - MEN'S TOILET ROOM 1/4" = 1'-0"

KELLER AND DASEKING - ARCHITECTS
WALTER L. KELLER A.I.A.
WILLIAM H. DASEKING A.I.A.
825 OAK GROVE AVENUE
MENLO PARK, CA 94025 415/322-5366
C. 1334

AUTOMOTIVE CLASSROOM BUILDING
TOILET ROOM RENOVATIONS
SKYLINE COLLEGE
SAN MATEO COUNTY COMMUNITY COLLEGE DISTRICT

8906

8-12-90

A21

23 of 41