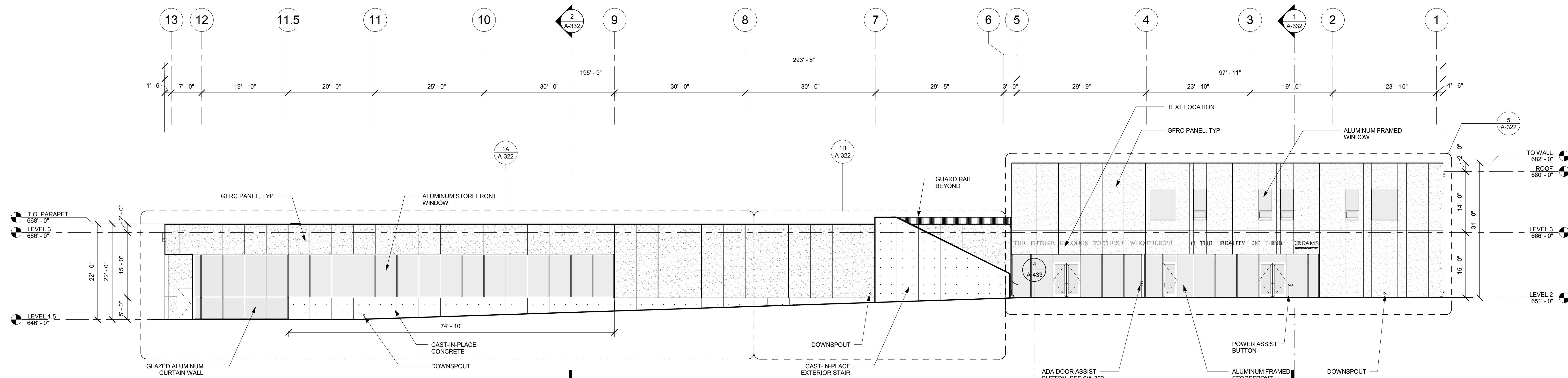


1 EXTERIOR NORTH ELEVATION
3/32" = 1'-0"



2 EXTERIOR WEST ELEVATION
3/32" = 1'-0"

GENERAL NOTES:

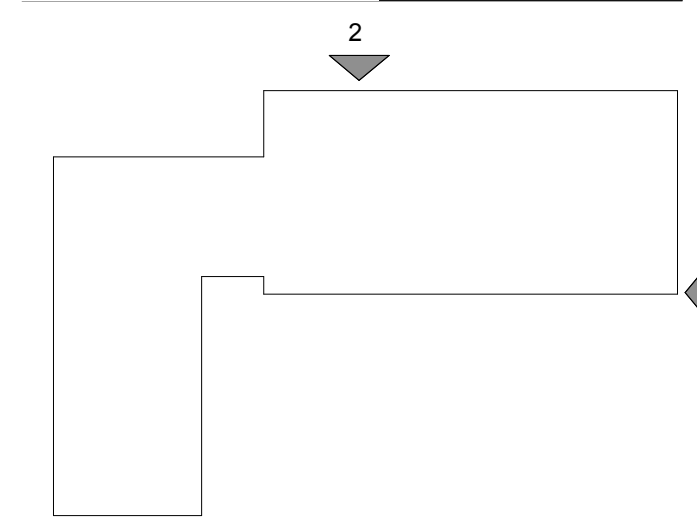
1. SEE A-320 SERIES FOR ENLARGED ELEVATIONS
2. SEE A-740 SERIES FOR WINDOW DETAILS

PROJECT RECORD SET

BUILDING 4
SKYLINE COLLEGE

SAN MATEO COUNTY
COMMUNITY COLLEGE
DISTRICT

CIP2 DESIGN-BUILD
PROJECT
BUILDING 4



PROJECT NO.: 07012.00 DRAWN BY: MC
DATE: 04/28/08 CHECKED BY: LG
SCALE: As indicated

SHEET TITLE:
EXTERIOR
BUILDING
ELEVATIONS

SHEET NO.

A-301