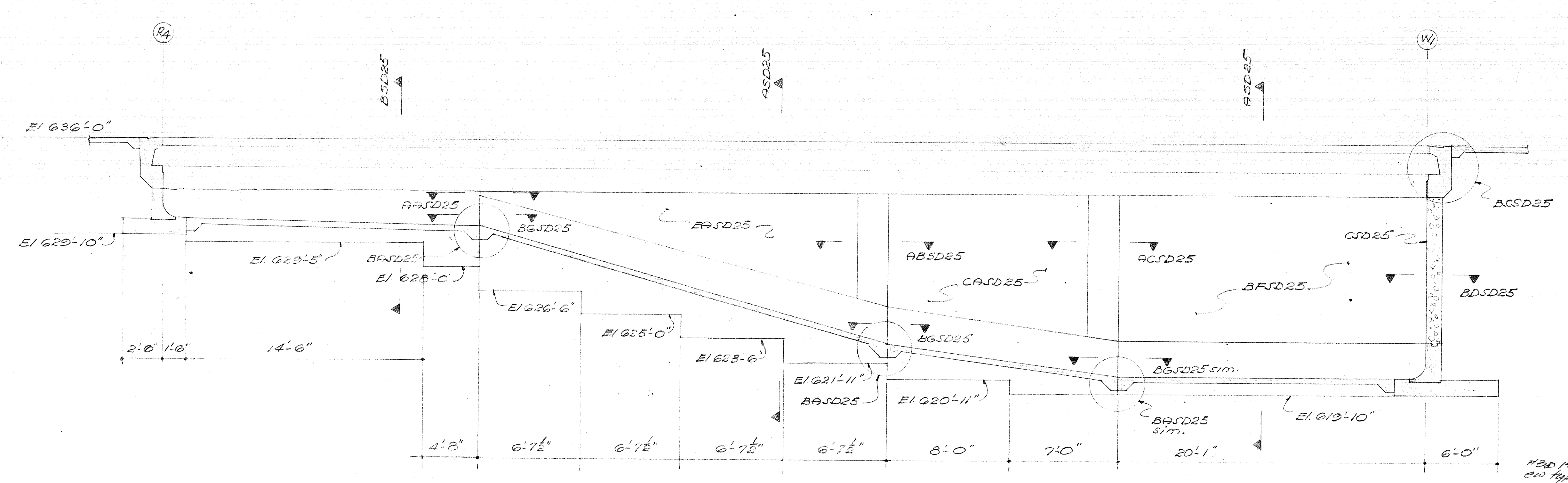
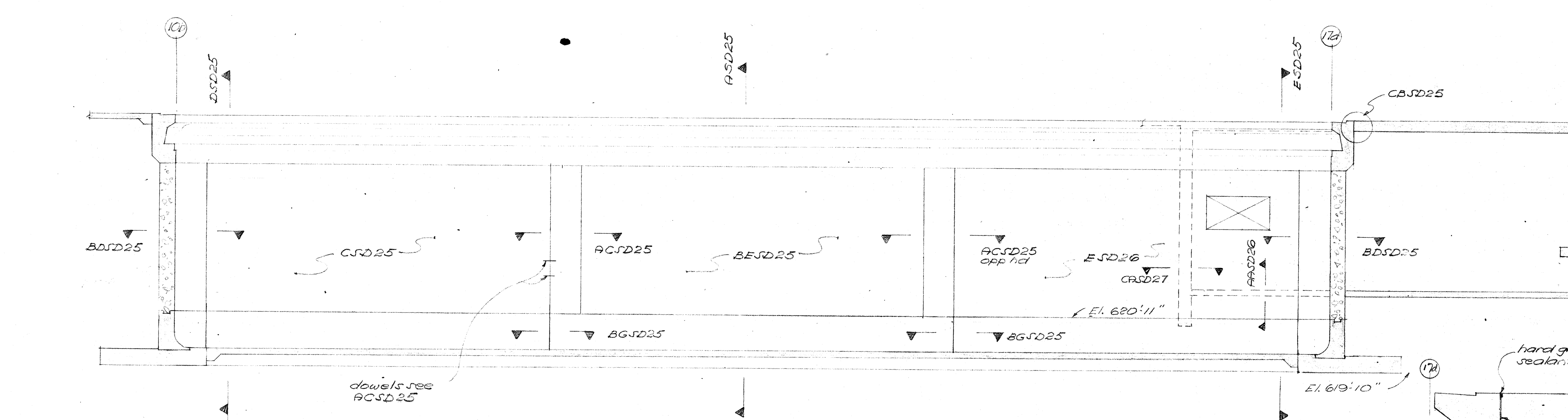


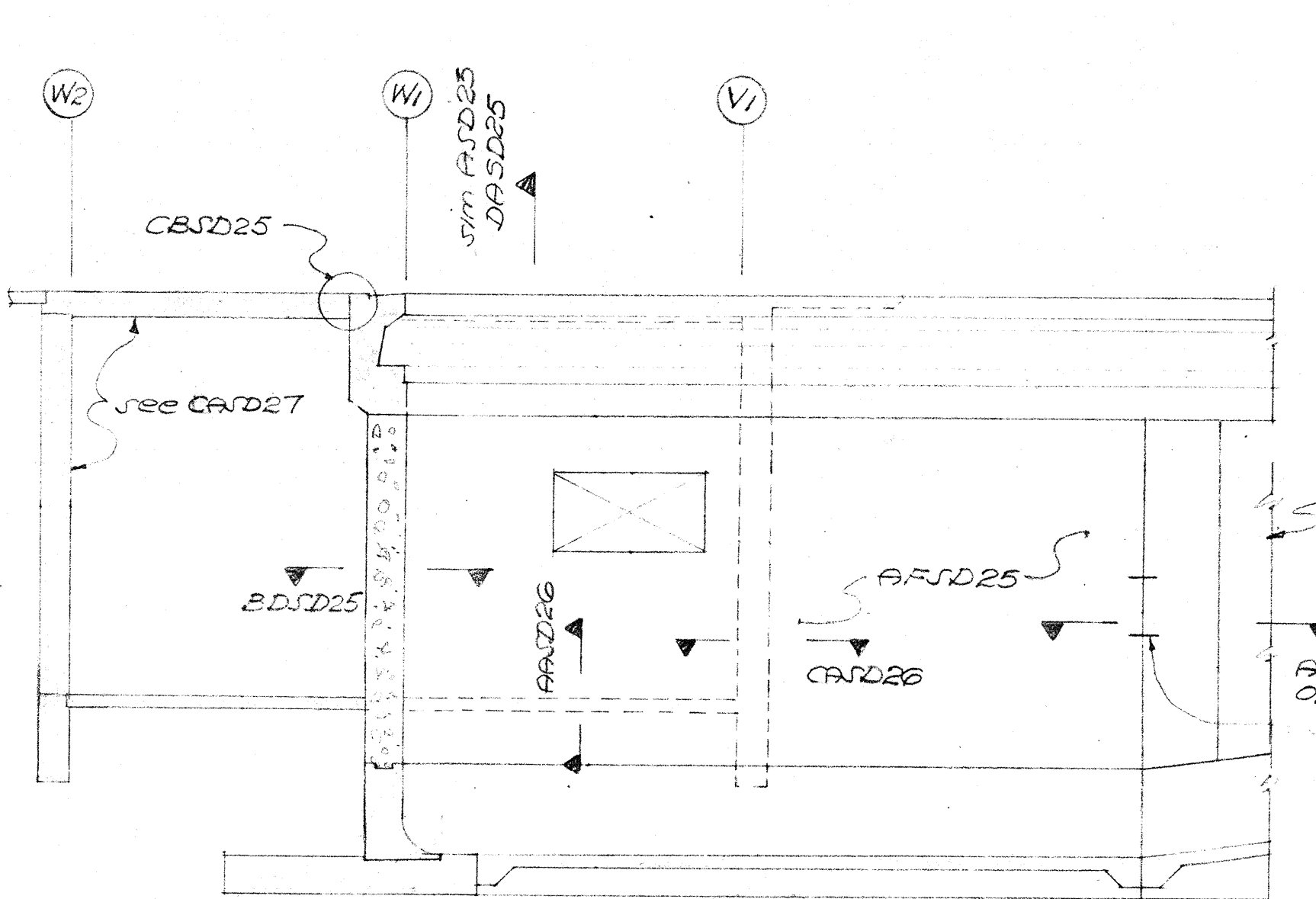
ELEVATION	REINFORCING			EL. D'
	"a" bars	"b" bars	"c" bars	
620'-10"	5'-0"	12"	#5 @ 12"	620'-0"
620'-11"	5'-0"	12"	#5 @ 12"	630'-0"
621'-11"	4'-6"	10"	#5 @ 12"	630'-0"
623'-6"	4'-0"	10"	#5 @ 12"	631'-0"
625'-0"	4'-0"	10"	None	631'-0"
626'-6"	4'-0"	10"	#5 @ 12"	631'-0"



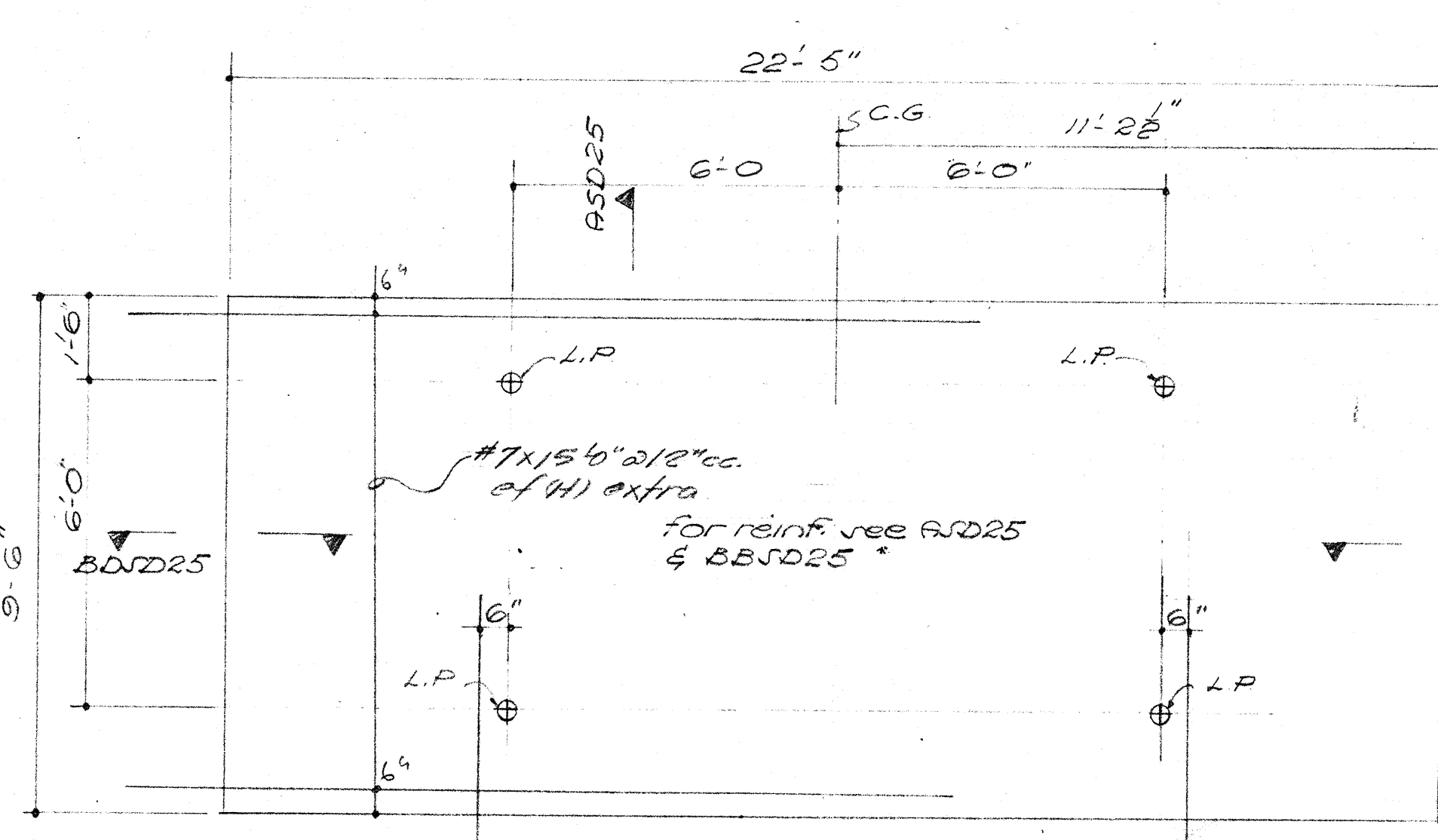
4000 PSI REG. WT. CONC.  
 WALL ELEVATION AT LINE CA  
**DSD25** 3/4" x 1'-0"



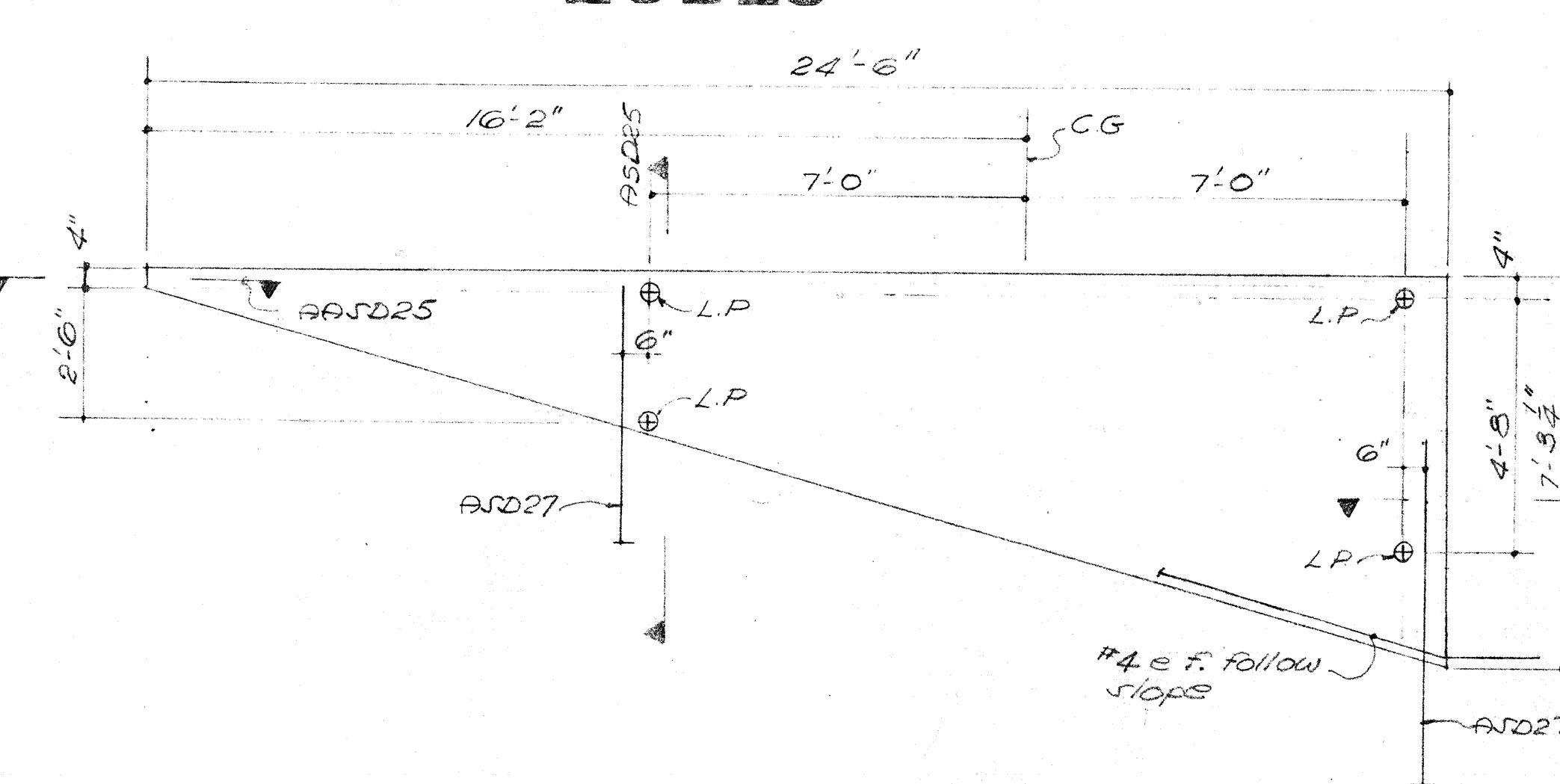
4000 PSI REG. WT. CONC.  
 WALL ELEVATION AT LINE W  
**DASD25** 3/4" x 1'-0"



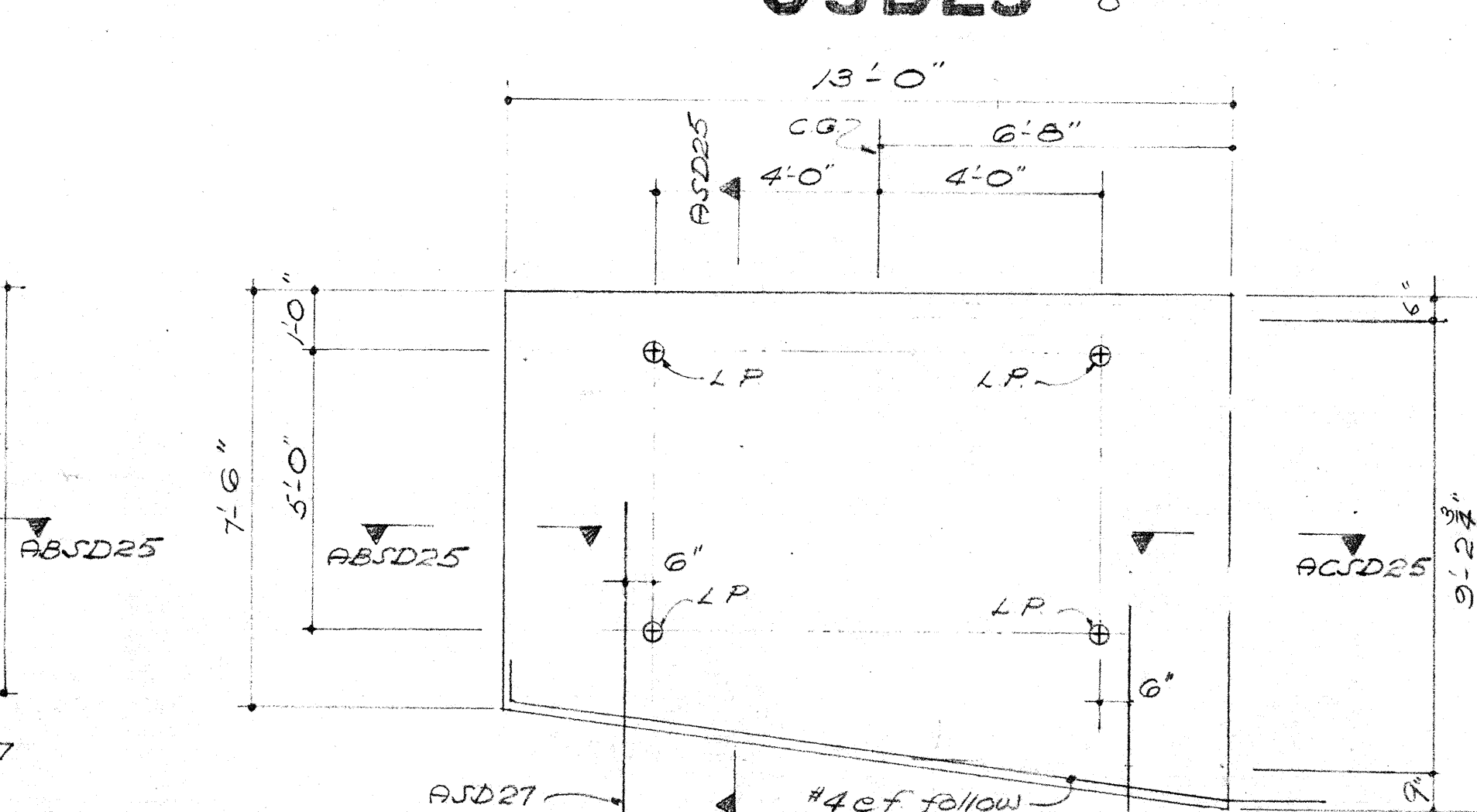
WALL ELEVATION AT LINE V  
**ESD25** 3/4" x 1'-0"



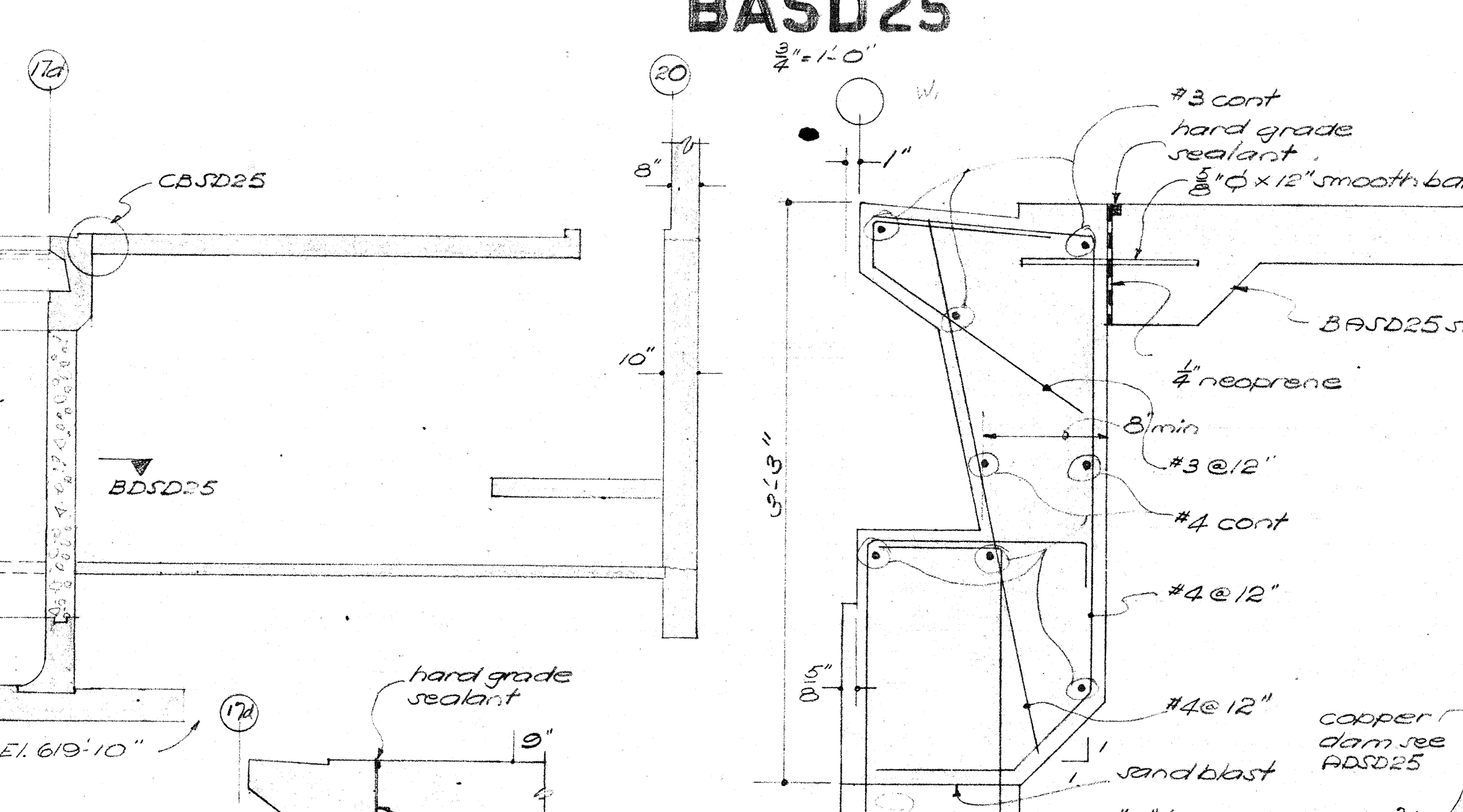
4000 PSI REG. WT. CONC.  
 APPROX. WT. 16.5 TONS  
 12" WALL AT LINE W  
**CSD25** 3/4" x 1'-0"



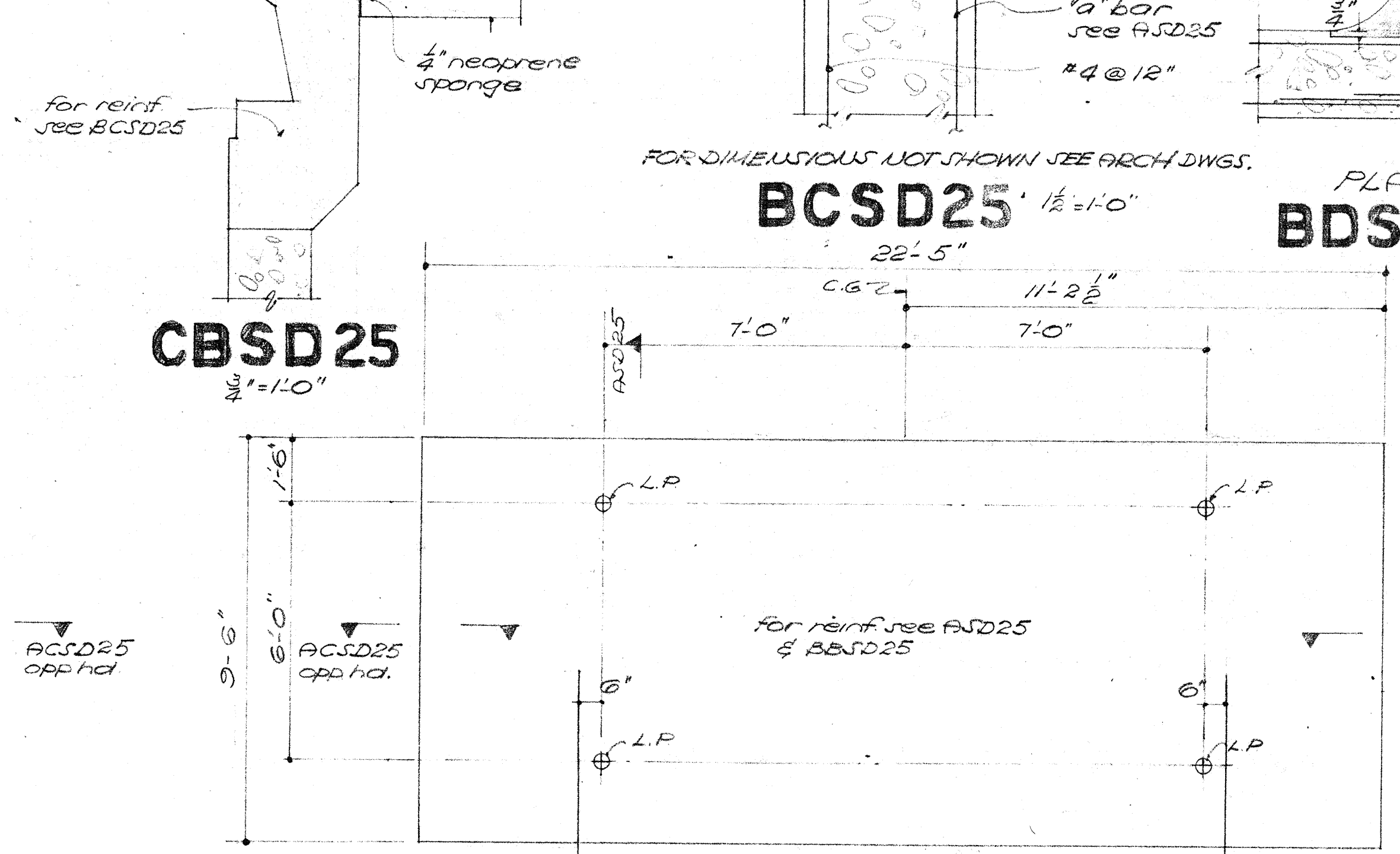
4000 PSI REG. WT. CONC.  
 APPROX. WT. 8 TONS  
 10" WALL AT LINES CA & V OPP. HD.  
**EASD25** 3/4" x 1'-0"



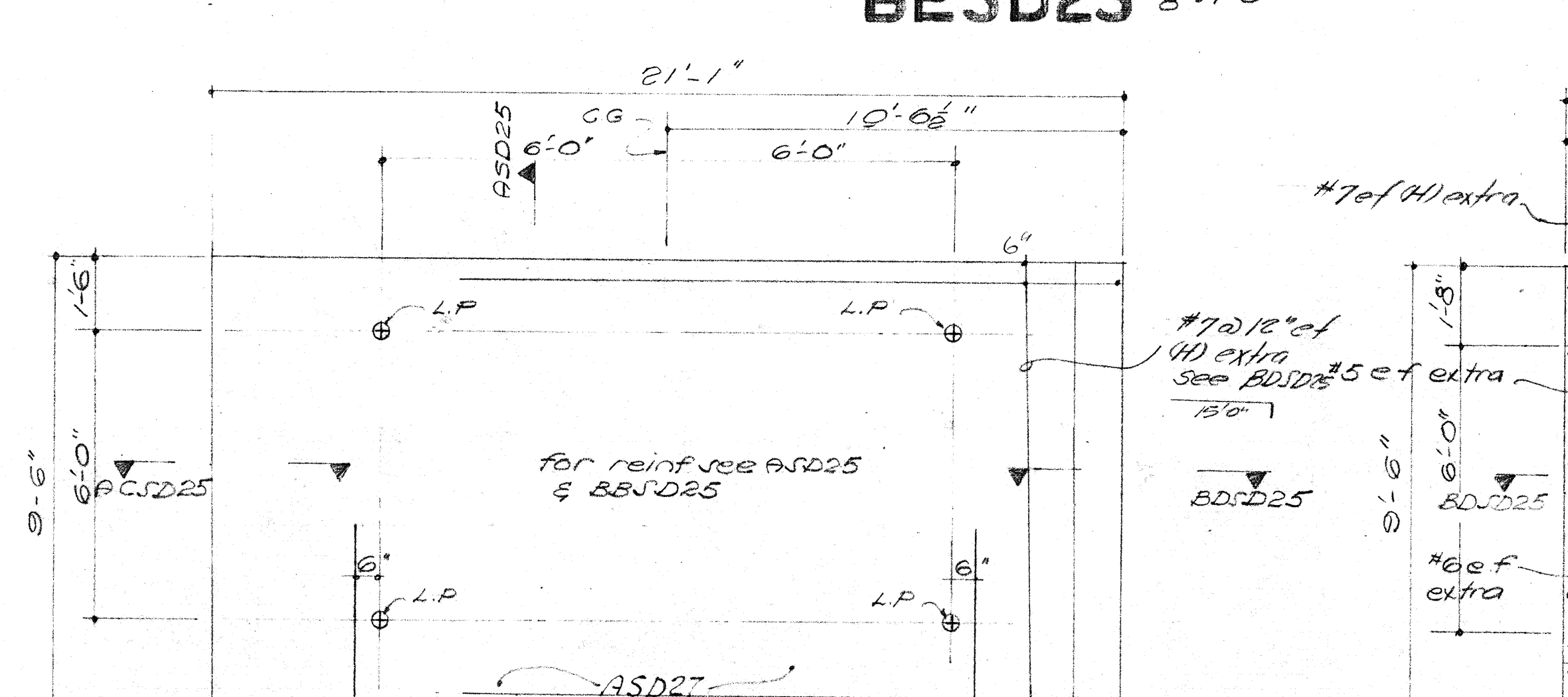
4000 PSI REG. WT. CONC.  
 APPROX. WT. 9 TONS  
 12" WALL AT LINE CA & V OPP. HD.  
**CASD25** 3/4" x 1'-0"



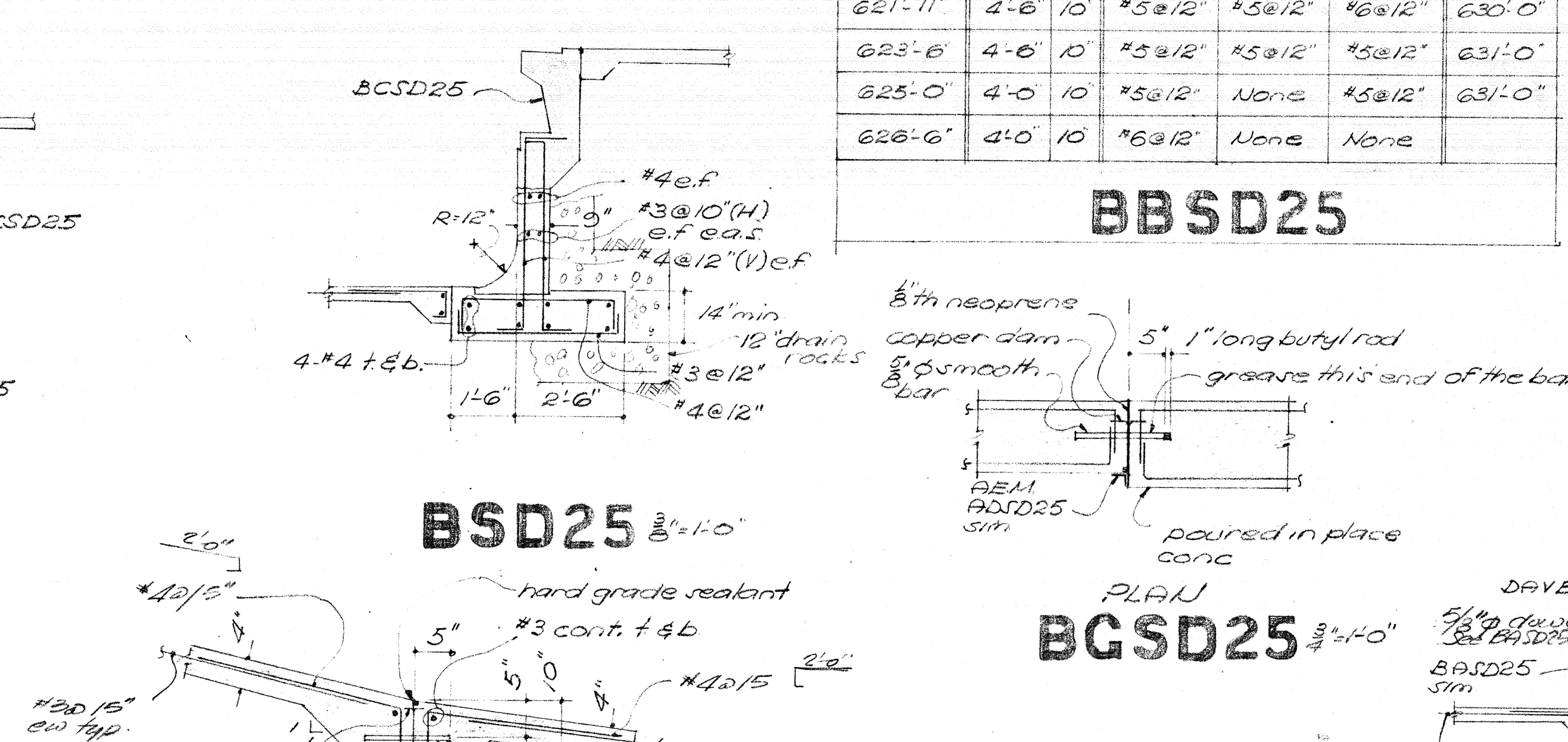
**BASD25** 3/4" x 1'-0"



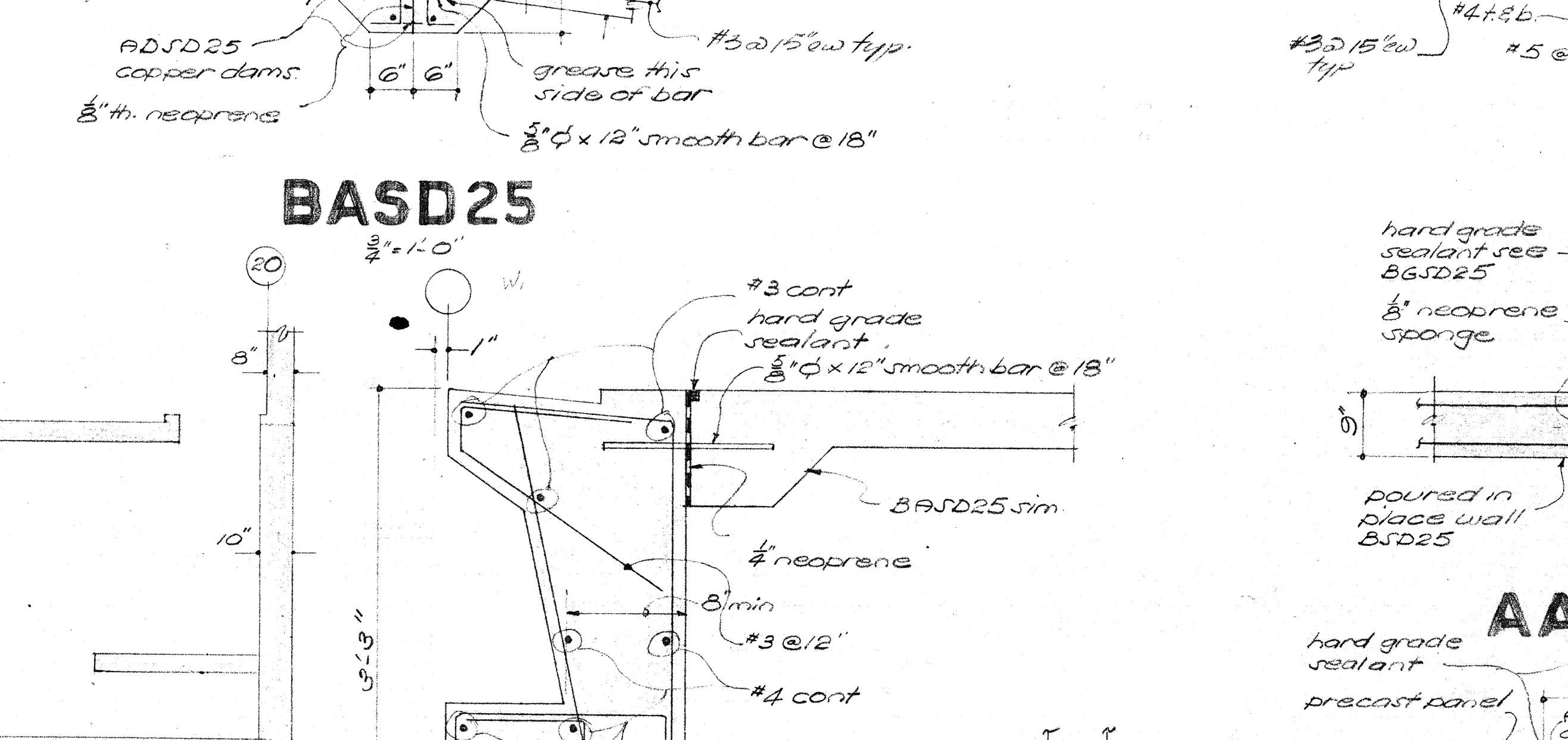
**CBSD25** 3/4" x 1'-0"



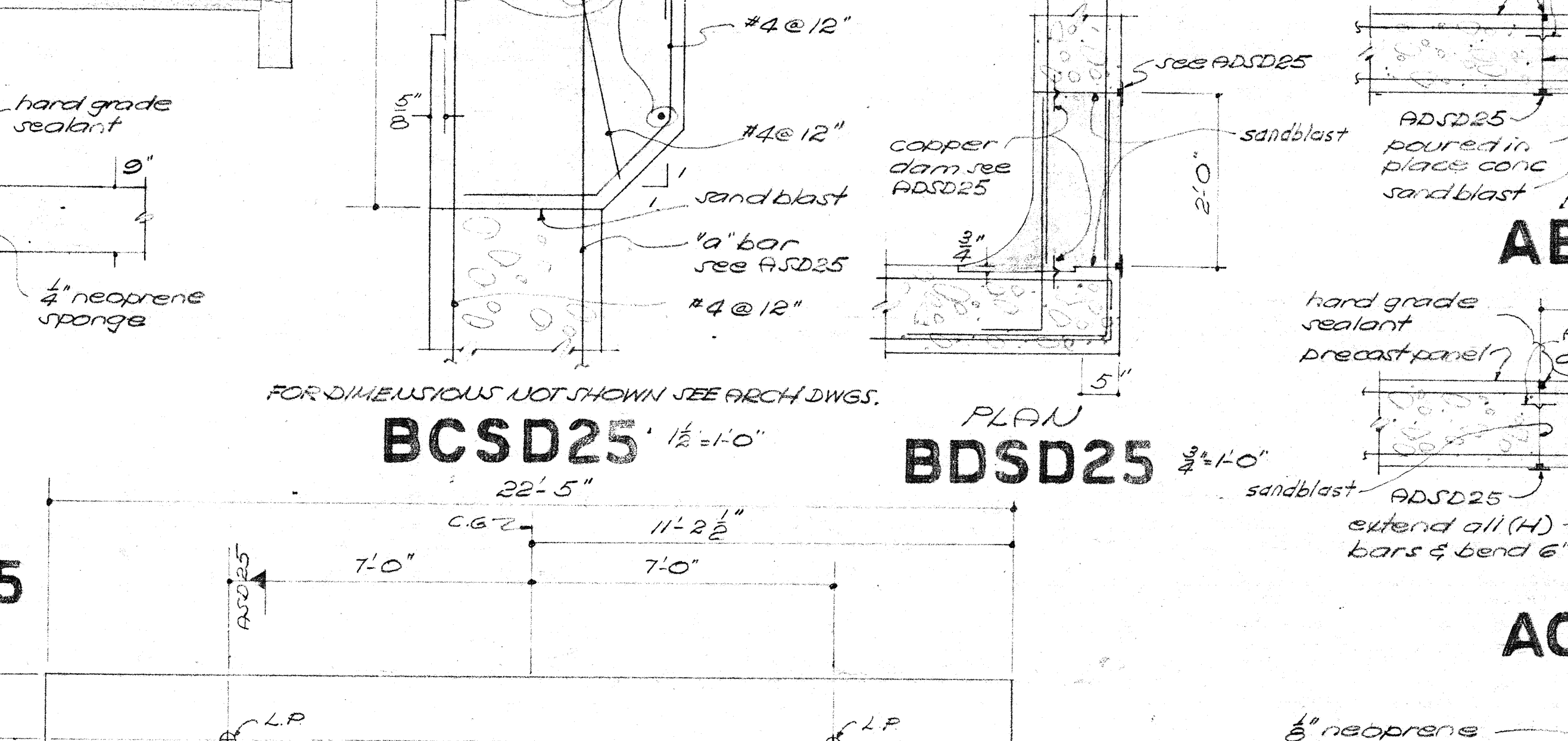
**BESD25** 3/4" x 1'-0"



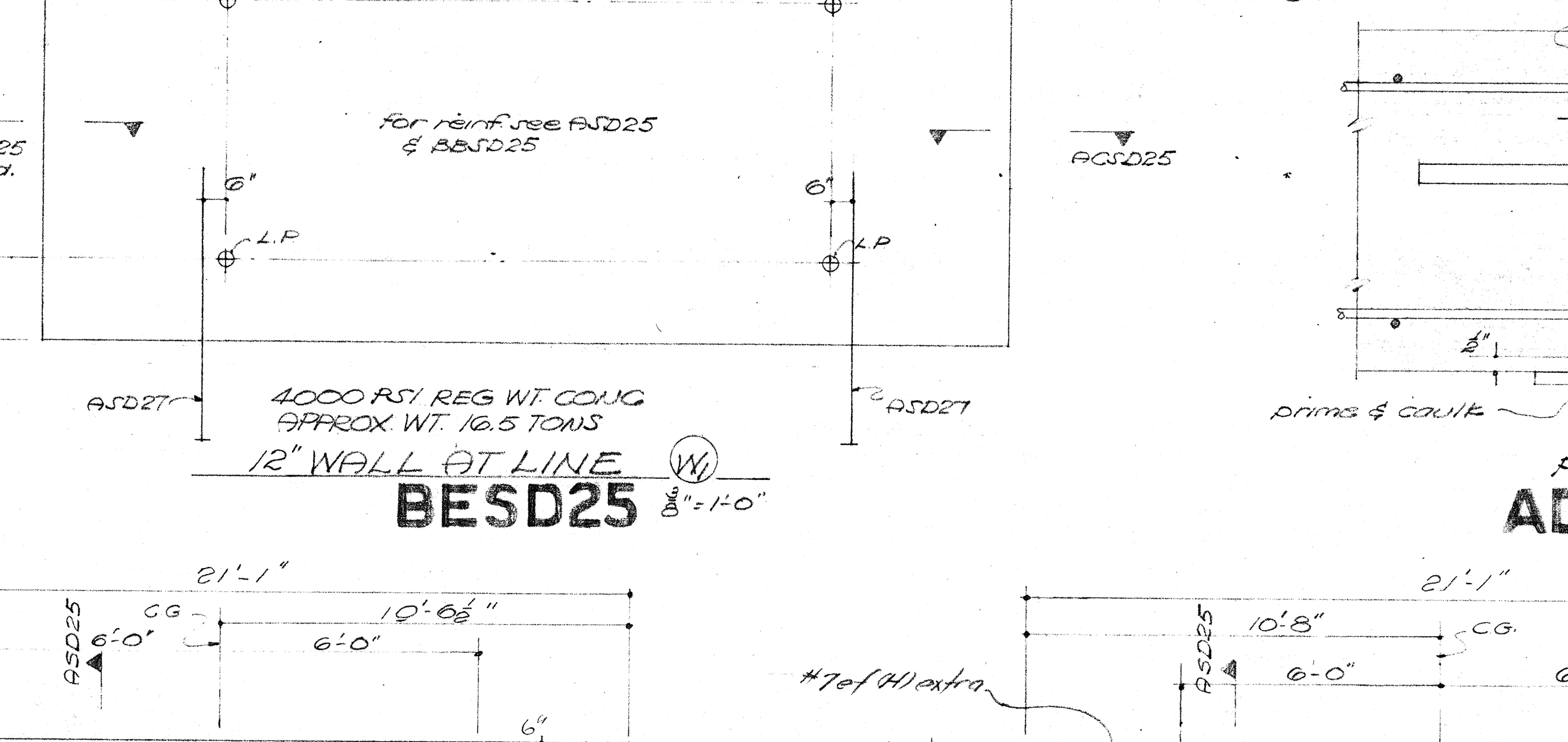
**BBSD25**



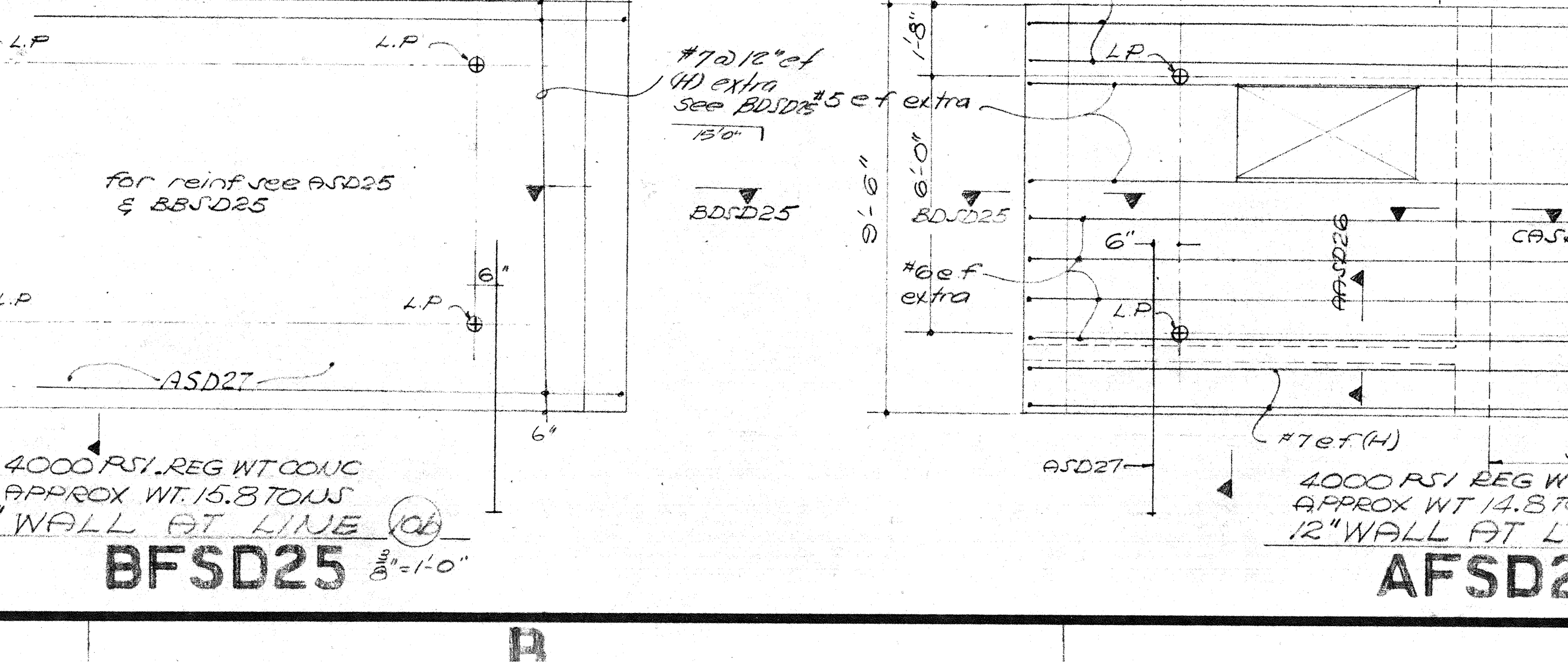
**BSD25** 3/4" x 1'-0"



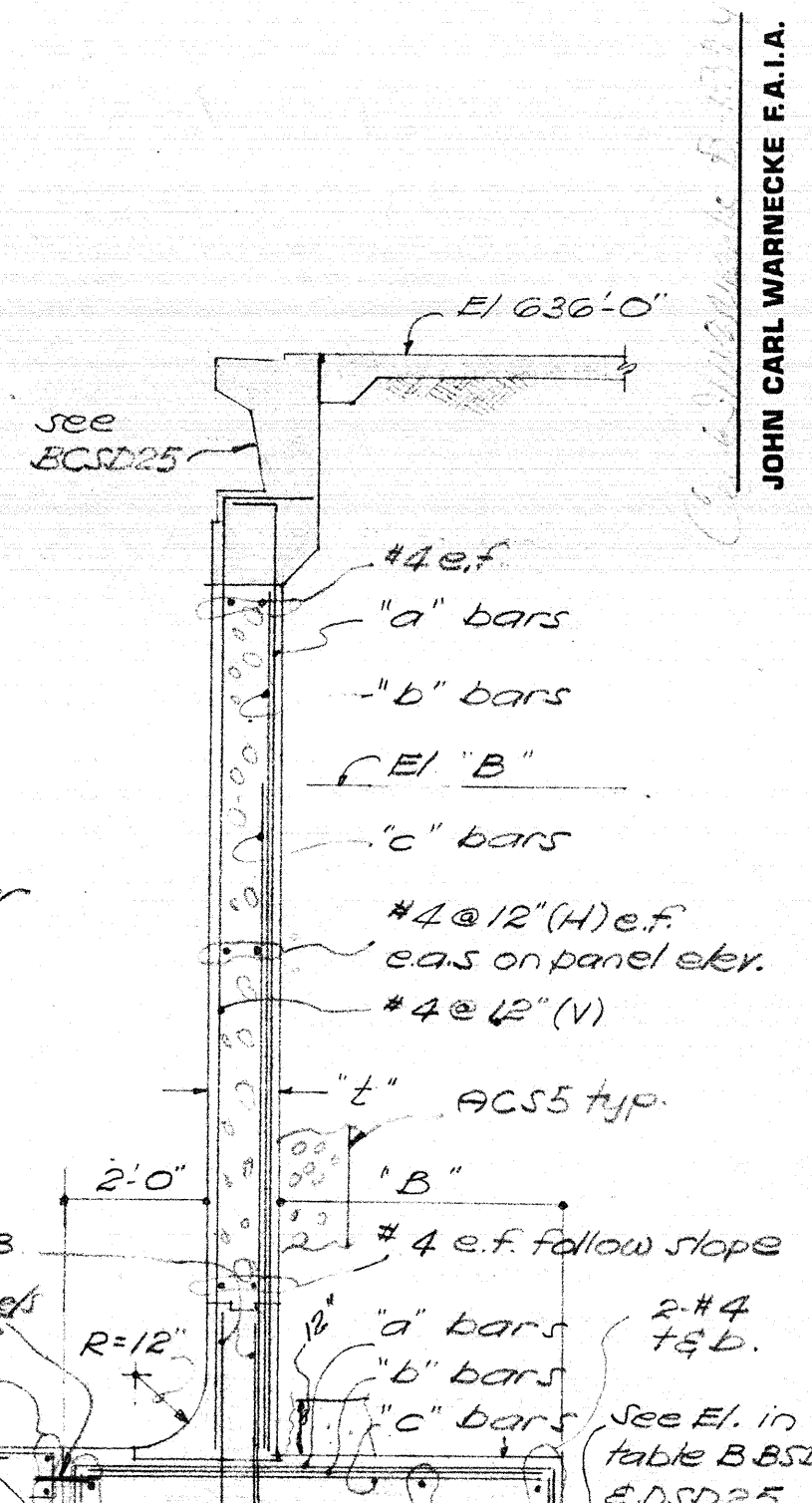
**BCSD25** 1/2" x 1'-0"



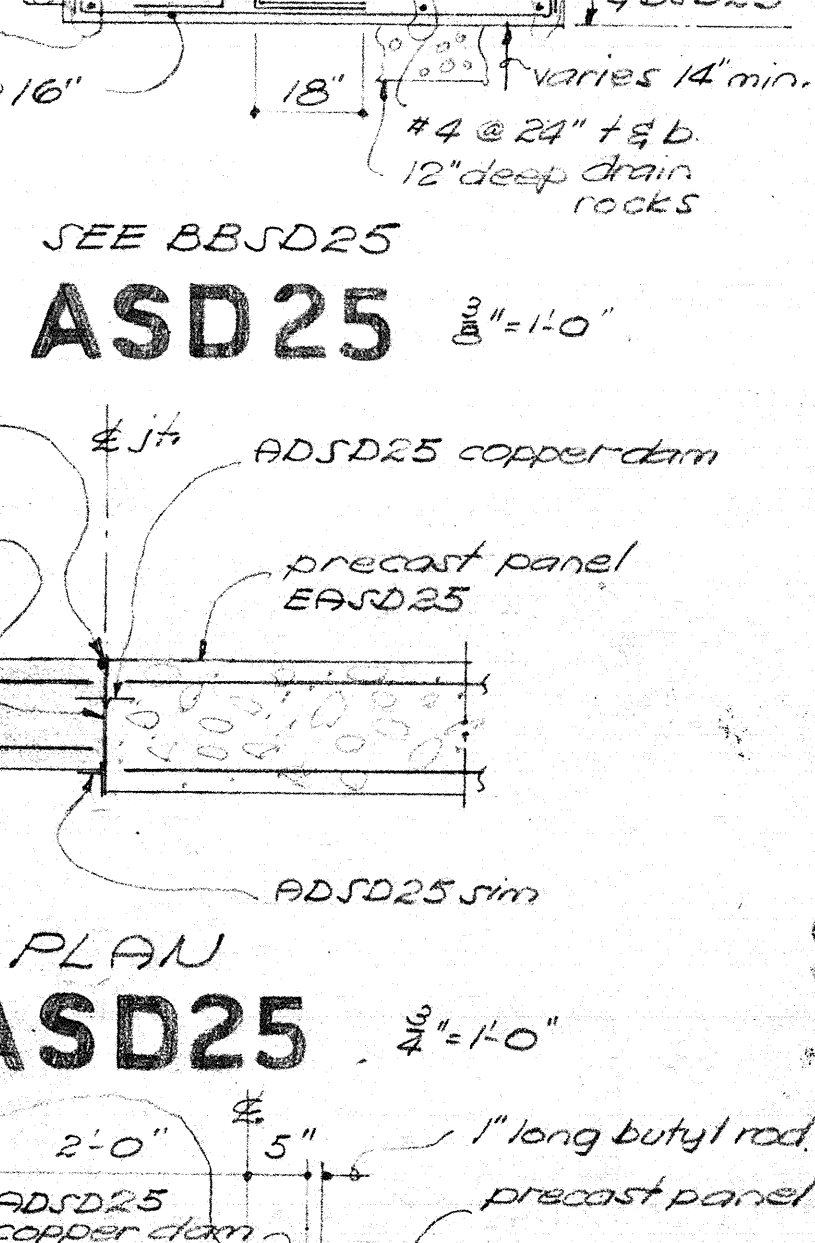
**BDSD25** 3/4" x 1'-0"



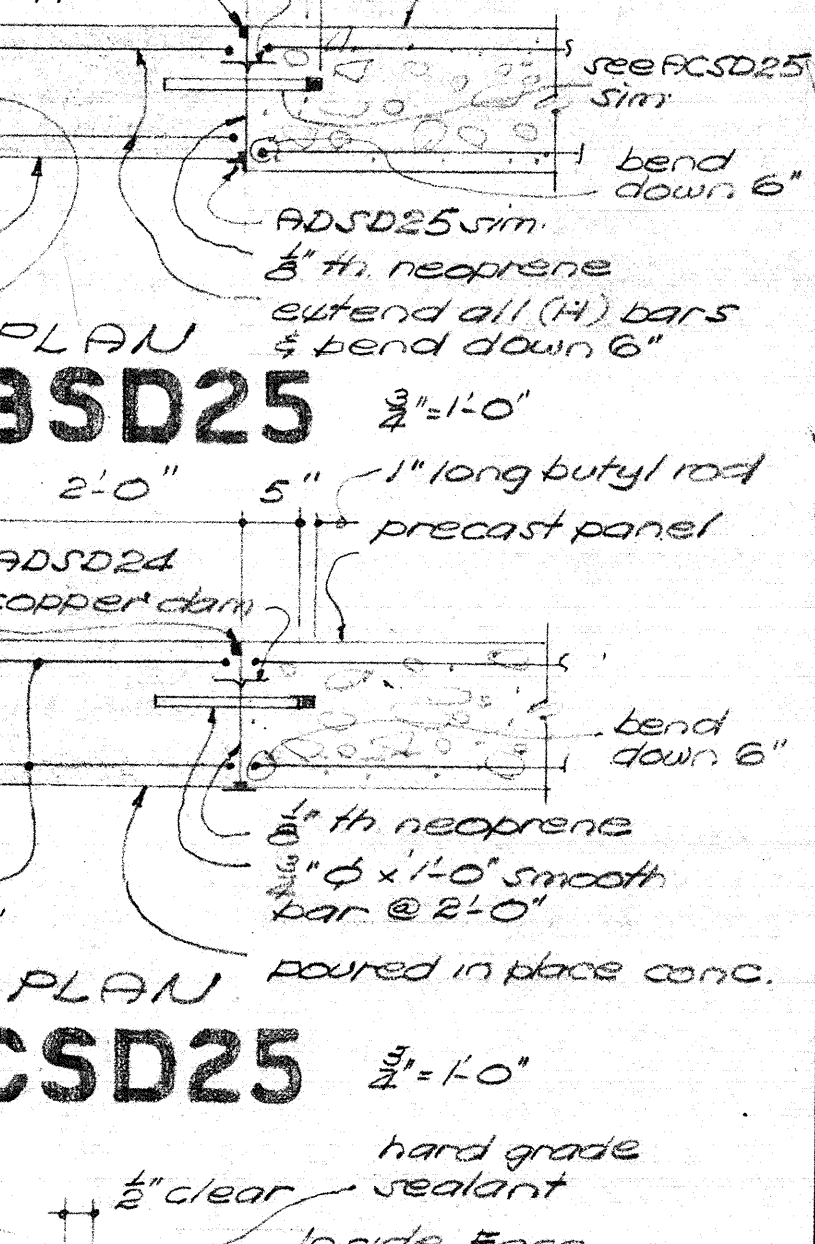
**BESD25** 3/4" x 1'-0"



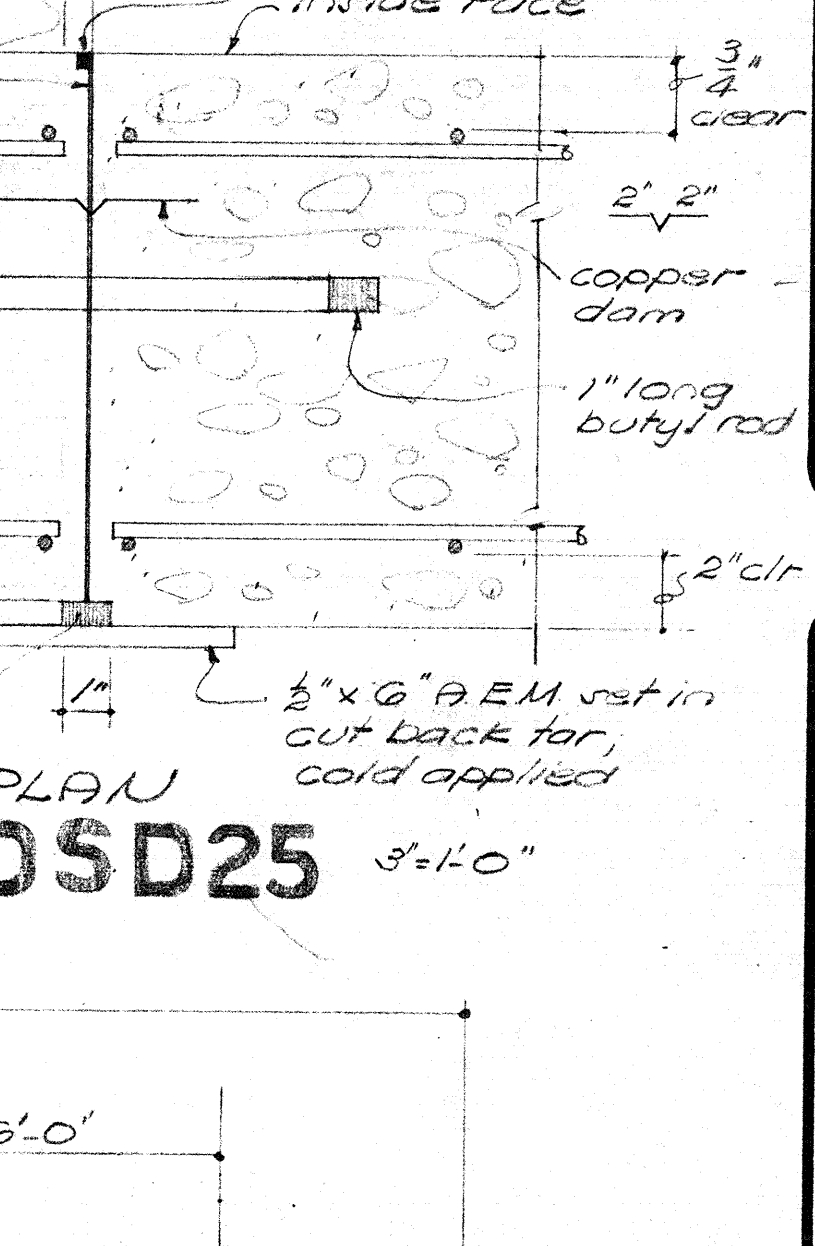
**ASD25** 3/4" x 1'-0"



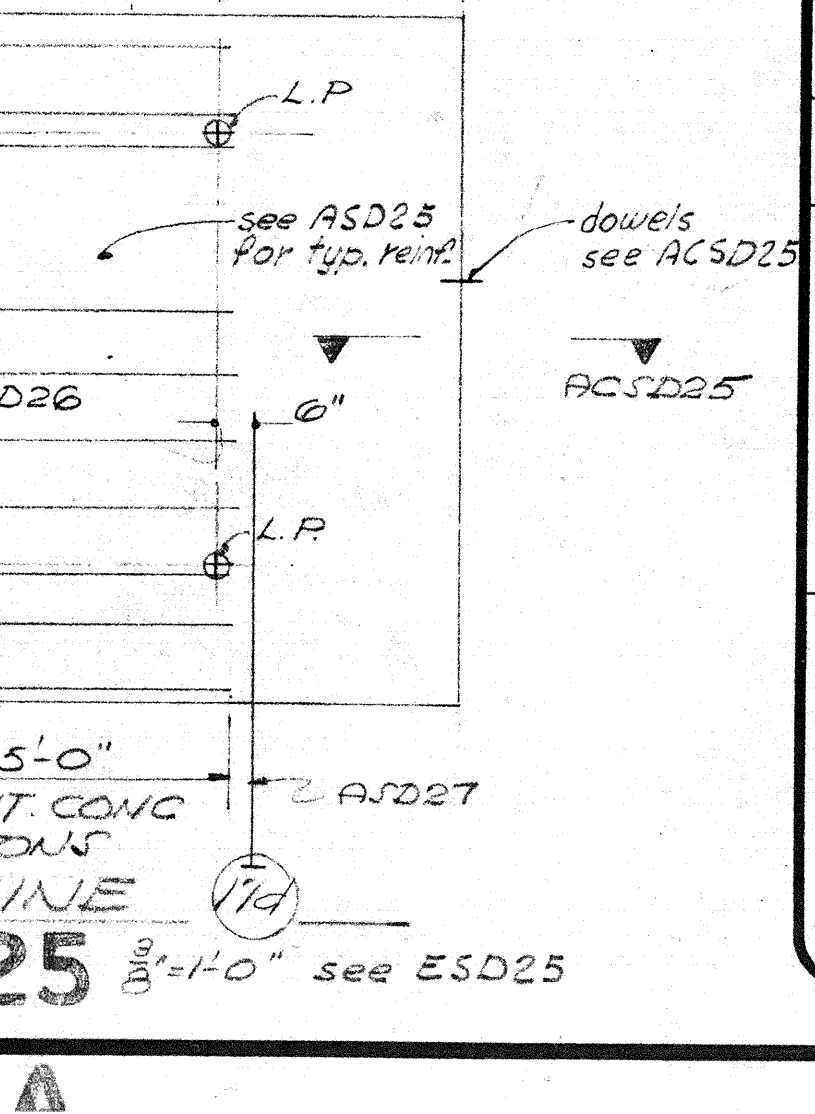
**AASD25** 3/4" x 1'-0"



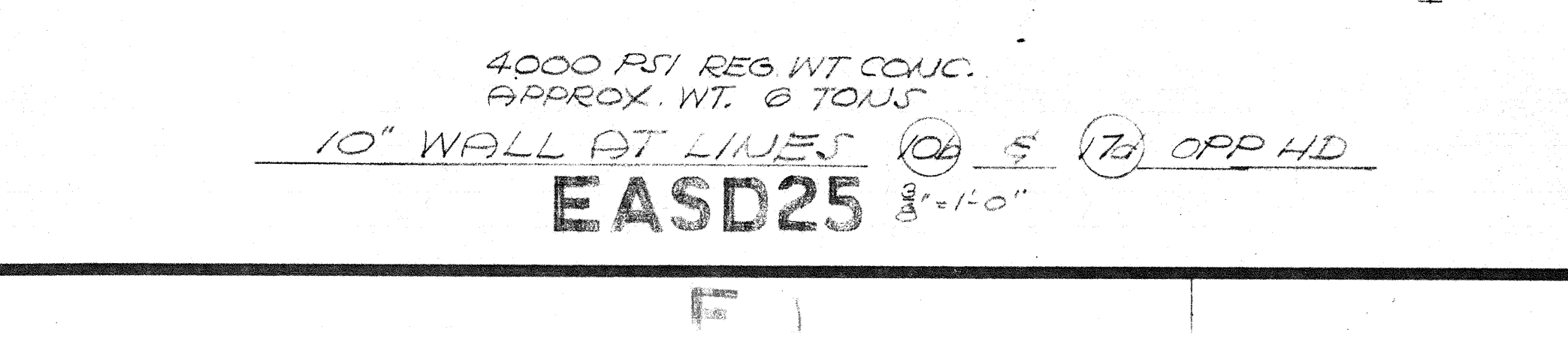
**ABSD25** 3/4" x 1'-0"



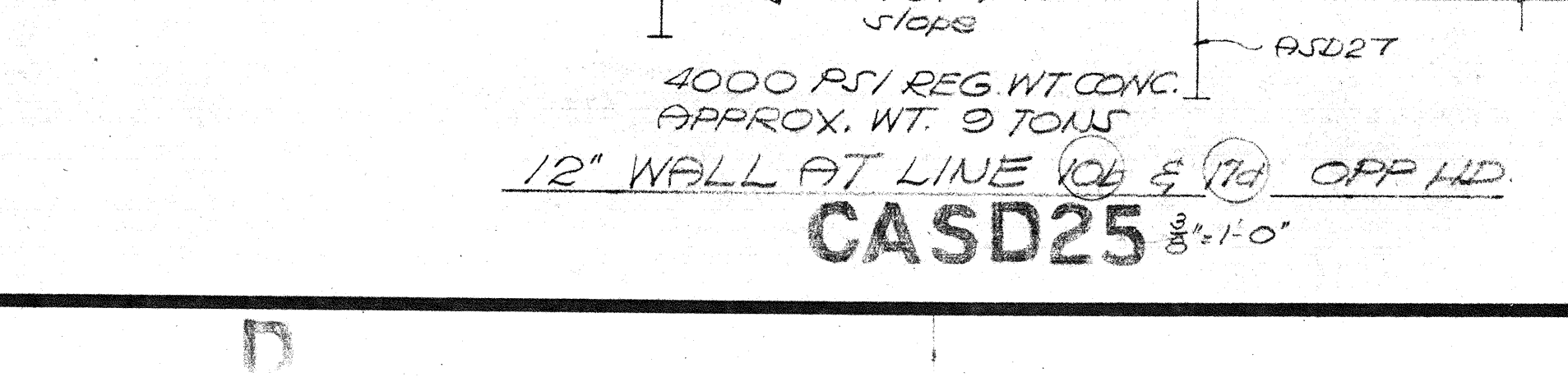
**ACSD25** 3/4" x 1'-0"



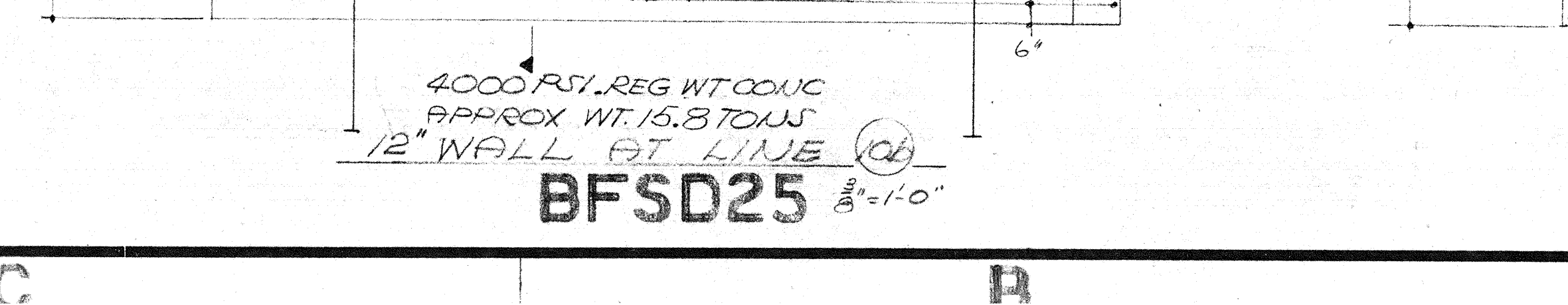
**ADSD25** 3/4" x 1'-0"



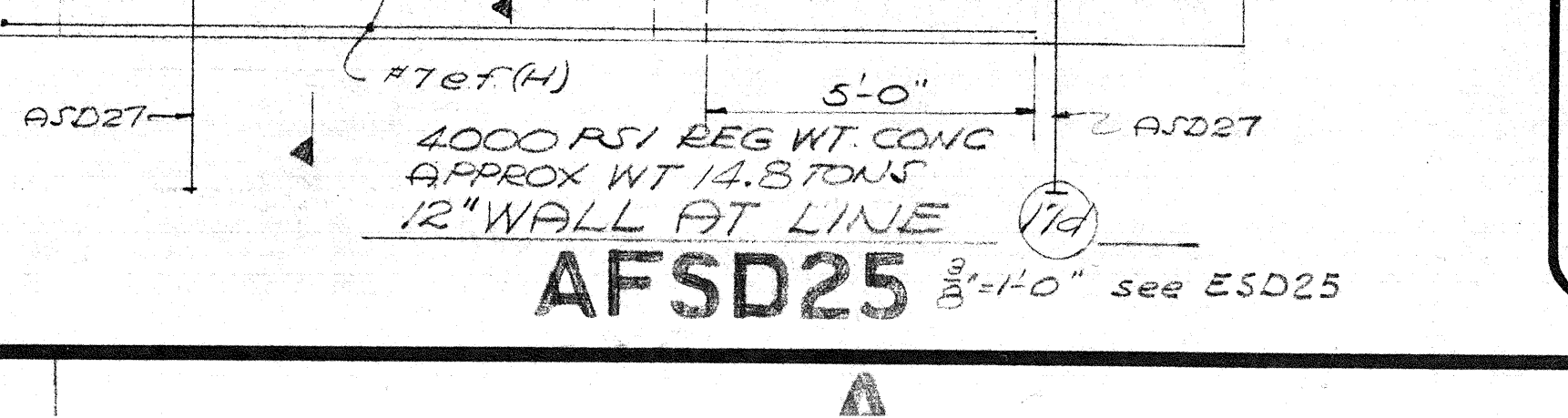
**EASD25** 3/4" x 1'-0"



**CASD25** 3/4" x 1'-0"



**BESD25** 3/4" x 1'-0"



**ADSD25** 3/4" x 1'-0"