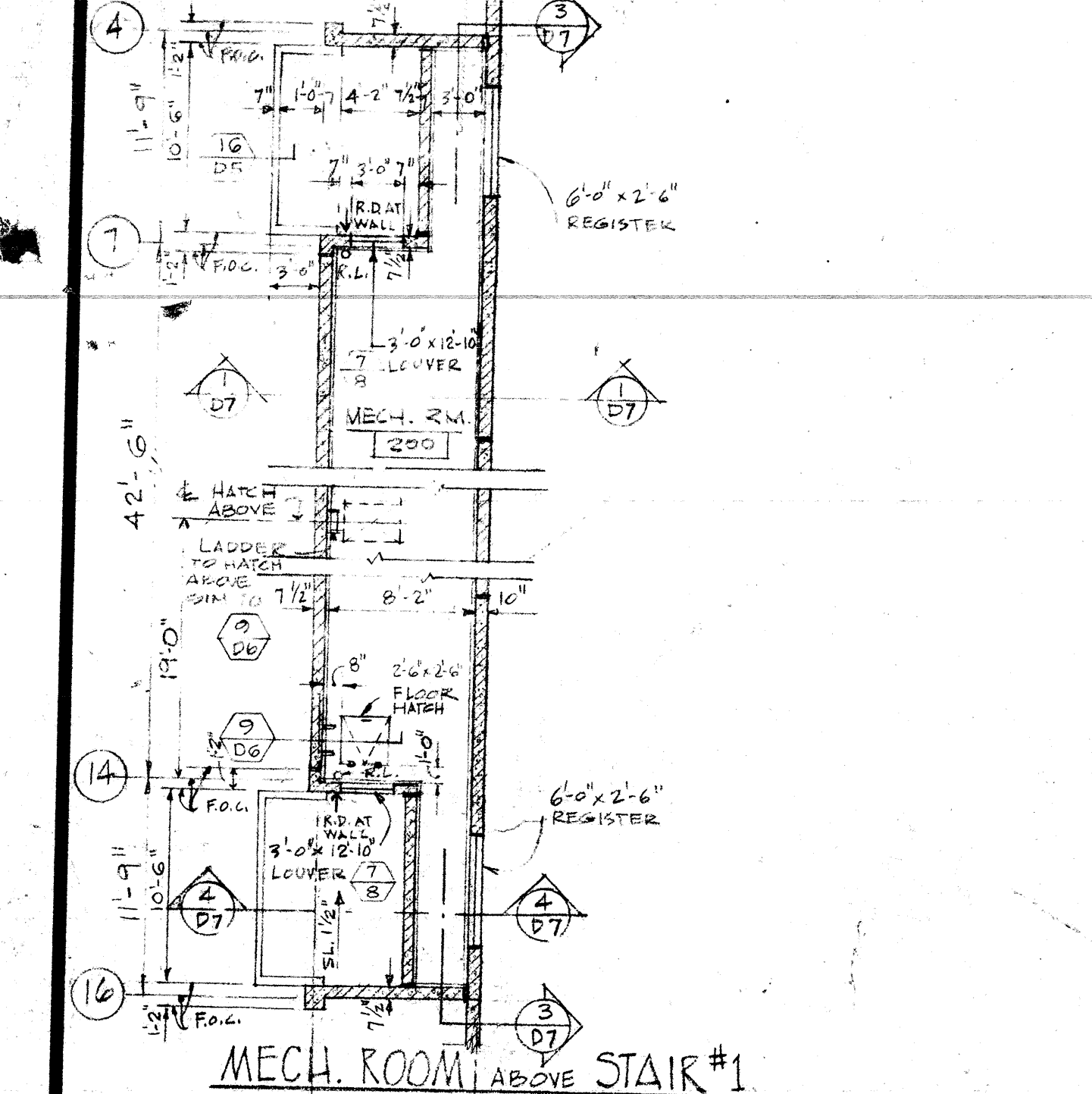
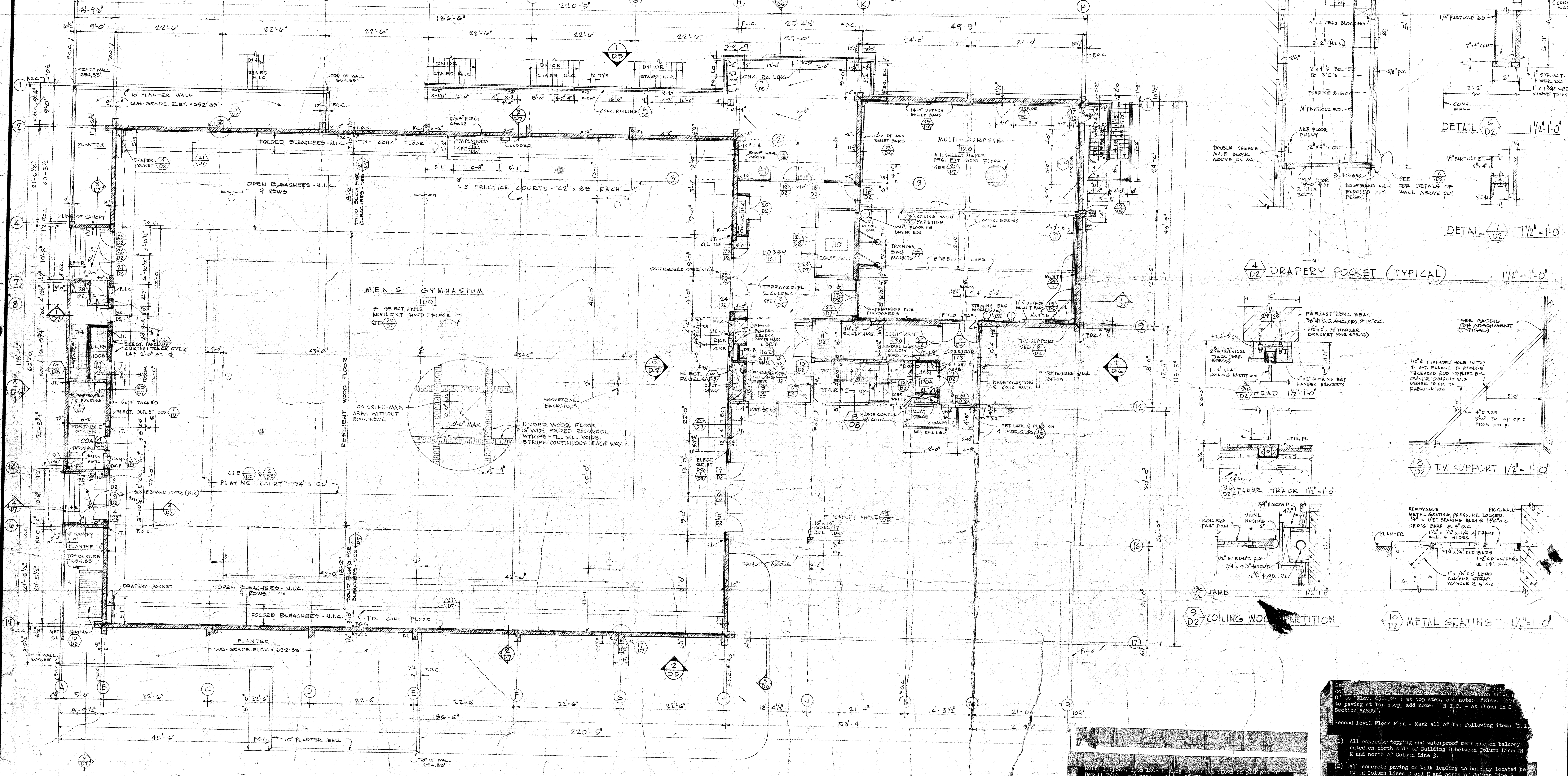


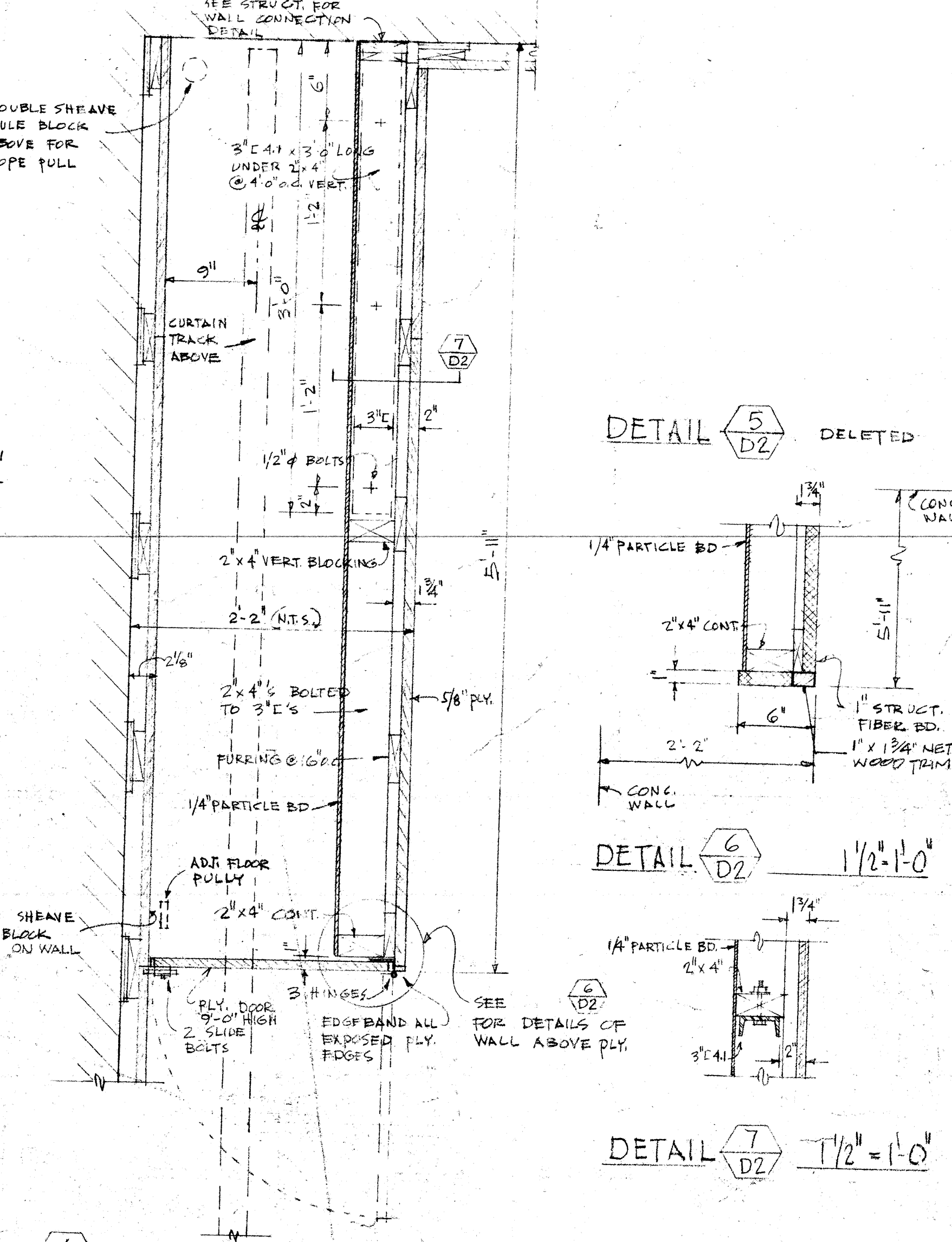
1 VOLLEY BALL & BADMINTON COURTS 1/16" = 1'-0"
 2 BASKETBALL COURTS 1/16" = 1'-0"
 3 TERRAZZO FLOOR PATTERN LOBBIES # 161 & 162 1/8" = 1'-0"



MECH. ROOM ABOVE STAIR #1
 SCALE: 1/8" = 1'-0"



MECH. ROOM ABOVE STAIR #1
 SCALE: 1/8" = 1'-0"



Notes:
 1. All concrete topping and waterproof membrane on balcony located on north side of Building D between Column Lines H and I and north of Column Line 3.
 2. All concrete paving on walk leading to balcony located between Column Lines D and H and north of Column Line 2.
 3. Note: Also mark corresponding items "N.I.C." on structural drawings as shown in p. 110 and in Details 1/10 and 2/10 - add note "N.I.C." to permit future installation of floor trap and coil.

Second Level Floor Plan - Mark all of the following items "N.I.C."
 1. All concrete topping and waterproof membrane on balcony located on north side of Building D between Column Lines H and I and north of Column Line 3.
 2. All concrete paving on walk leading to balcony located between Column Lines D and H and north of Column Line 2.
 3. Note: Also mark corresponding items "N.I.C." on structural drawings as shown in p. 110 and in Details 1/10 and 2/10 - add note "N.I.C." to permit future installation of floor trap and coil.