

**KEYNOTES**  
 1 (E) CABLE TRAY AT STRUCTURE.

**KRUGER BENSON ZIEMER ARCHITECTS, INC.**  
 30 W. ARRELLAGA, SANTA BARBARA, CA 93101  
 805/963-1726

**STEVE DOWTY, A.I.A.**  
 PRINCIPAL IN CHARGE

**GERALD SHUSTA**  
 PROJECT ARCHITECT

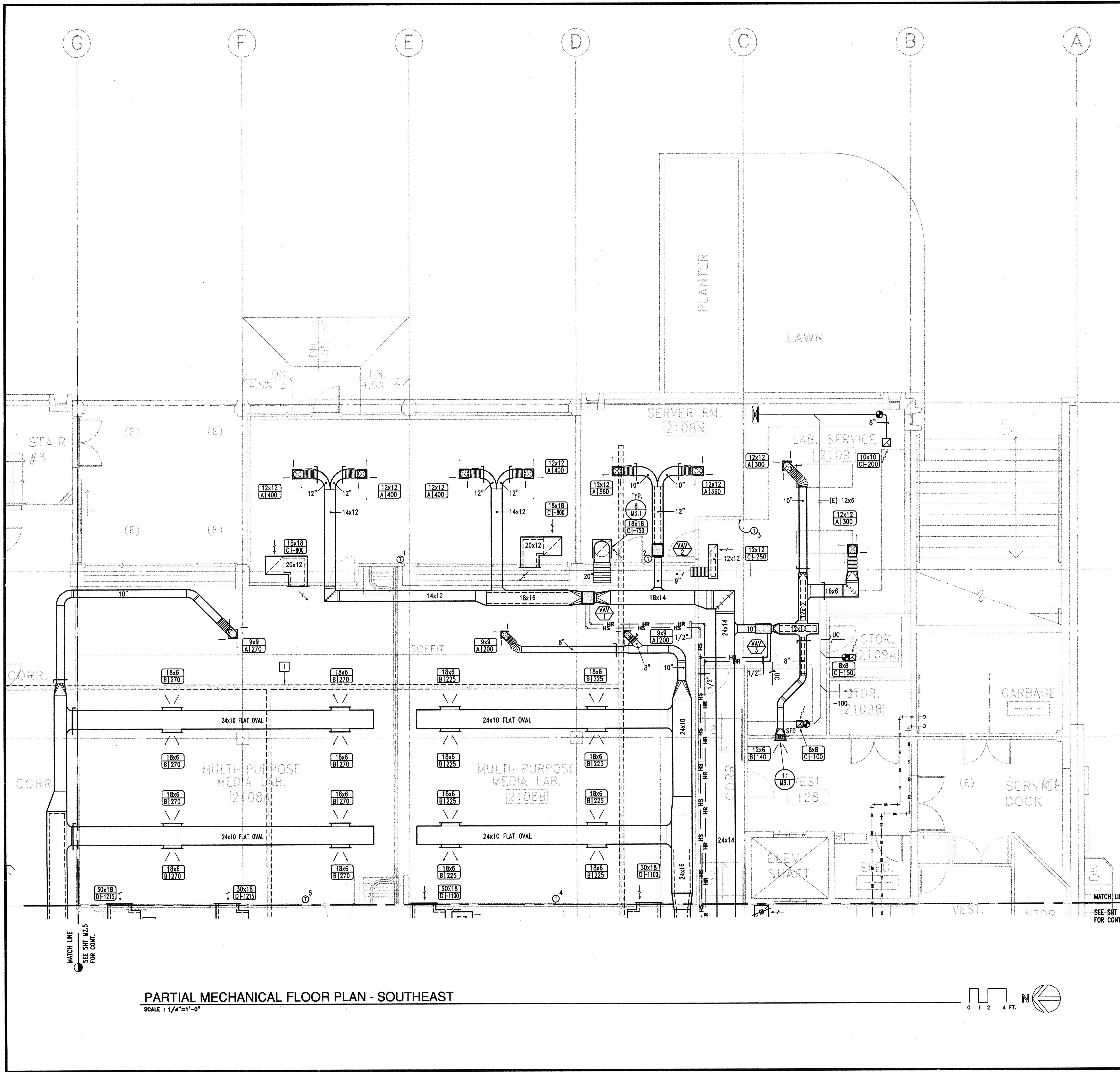
MECHANICAL ENGINEERING CONSULTANTS  
 85014  
 821 W. MICHELLE ST. SUITE A  
 SANTA BARBARA, CA 93101  
 TEL (805) 857-4832

**CENTER FOR ADVANCED LEARNING TECHNOLOGY**  
**SKYLINE COLLEGE**  
 SAN MATEO COUNTY COMMUNITY COLLEGE DISTRICT  
 SAN BRUNO, CALIFORNIA 94066  
 3800 COLLEGE DRIVE

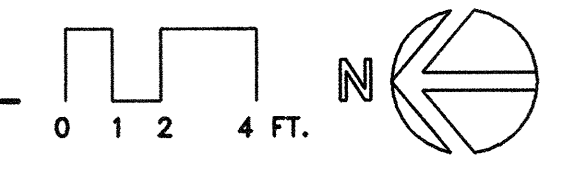
REGISTERED ENGINEER  
 STATE OF CALIFORNIA

NO.	DESCRIPTION	DATE	BY

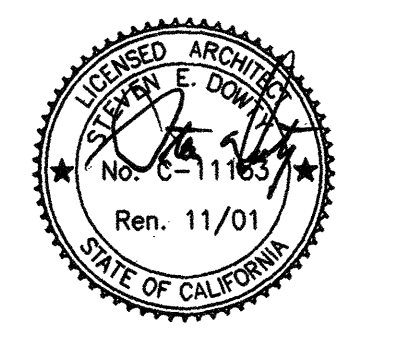
DRAWN	J. SIERRA, E. MARKHAM
CHECKED	AVR
DATE	03-21-2001
JOB NO.	98-03
SHEET TITLE	PARTIAL MECHANICAL FLOOR PLAN - SOUTHEAST
SHEET	M 2.4
RECEIVED	OCT 2 2001



**PARTIAL MECHANICAL FLOOR PLAN - SOUTHEAST**  
 SCALE : 1/4"=1'-0"



**KEYPLAN**  
 SCALE : NTS



IDENTIFICATION STAMP  
 DIV. OF THE STATE ARCHITECT  
 OFFICE OF REGULATION SERVICES  
 APPL 01-103735  
 DATE 01/27/01

E:\MB-Kruger\Benson\Ziemer\K00014-Skylines\media\K00014-H2\_4.dwg, 06/20/2001 03:40:52 PM, Chris, E:\mcp3, Arch E1 - 36 x 42 in., 1:1