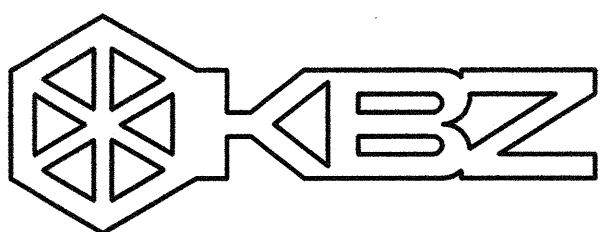


KEYNOTES	
1	SEE SHEET M2.3 FOR WORK THIS AREA.
2	SEE SHEET M2.4 FOR WORK THIS AREA.
3	SEE SHEET M2.5 FOR WORK THIS AREA.
4	SEE SHEET M2.6 FOR WORK THIS AREA.
5	SEE SHEET M2.7 FOR WORK THIS AREA.
6	RETURN AIR OPENING ABOVE CEILING, SEE ARCH.




KRUGER BENSEN ZIEMER ARCHITECTS, INC.
 30 W. ARRELLAGA
 925/963.1723

AIA
 SANTA BARBARA, CA
 93101

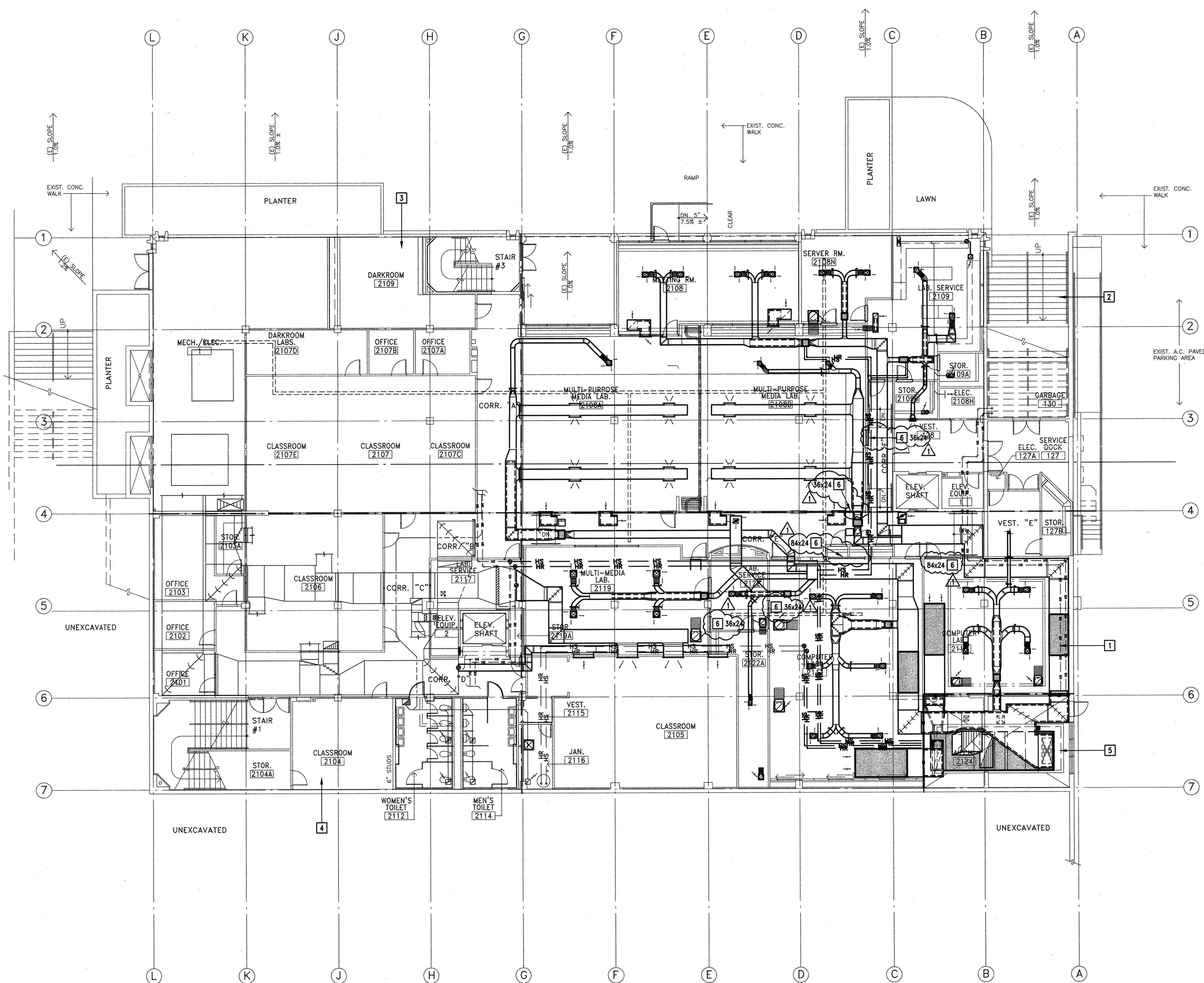
STEVE DOWDY, A.I.A.
 PRINCIPAL IN CHARGE

GERALD SHUSTA
 PROJECT ARCHITECT

All these design arrangements and plans indicated or represented by the drawings are based on the property of Kruger-Bensen-Ziemer. All contracts, and work created, related and developed for use in, and in connection with the specified projects. None of such plans, designs, arrangements or plans shall be used or disclosed in any person, firm or corporation for any purpose whatsoever without the written permission of Kruger-Bensen-Ziemer.




MECE
 180014
 MECHANICAL
 ENGINEERING
 CONSULTANTS
 881 W. Micheltorena St.
 Suite A
 Santa Barbara, CA 93101
 Tel (805) 957-4832



**CENTER FOR ADVANCED LEARNING TECHNOLOGY
 SKYLINE COLLEGE**

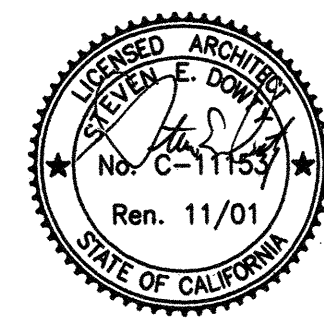
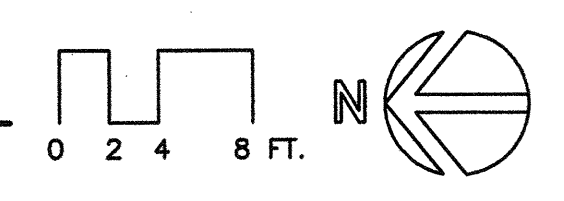
SAN MATEO COUNTY COMMUNITY COLLEGE DISTRICT
 3300 COLLEGE DRIVE
 SAN BRUNO, CALIFORNIA 94066



NO.	DESCRIPTION	DATE	BY
1	BID SET REVISION	10/28/01	AVR
REVISION			

DRAWN	J. SERRIA, E. MARKHAM
CHECKED	AVR
DATE	03-21-2001
JOB NO.	98-03
SHEET TITLE	OVERALL MECHANICAL FLOOR PLAN
SHEET	M 2.2
OF	

OVERALL MECHANICAL FLOOR PLAN
 SCALE : 1/8"=1'-0"



IDENTIFICATION STAMP
 DIV. OF THE STATE ARCHITECT
 OFFICE OF REGULATION SERVICES

APPL 01-103735
 DATE 08/27/01

E:\BIB\KRUGERBENSENZIEMER\K0014\SKYLINE\CIVIL\PLAN\K0014_M2_2.dwg, 10/28/2001 11:32:48 AM, Chris, ACAD2002 ezplot File.plt, Arch ET: 30 x 42 in., 1:1