

KRUGER BENSEN ZIEMER ARCHITECTS, INC. AIA  
30 W. ARRELLAGA 805/963-1728 SANTA BARBARA, CA 93101

STEVE DOWTY, A.I.A.  
PRINCIPAL IN CHARGE

GERALD SHUSTA  
PROJECT ARCHITECT

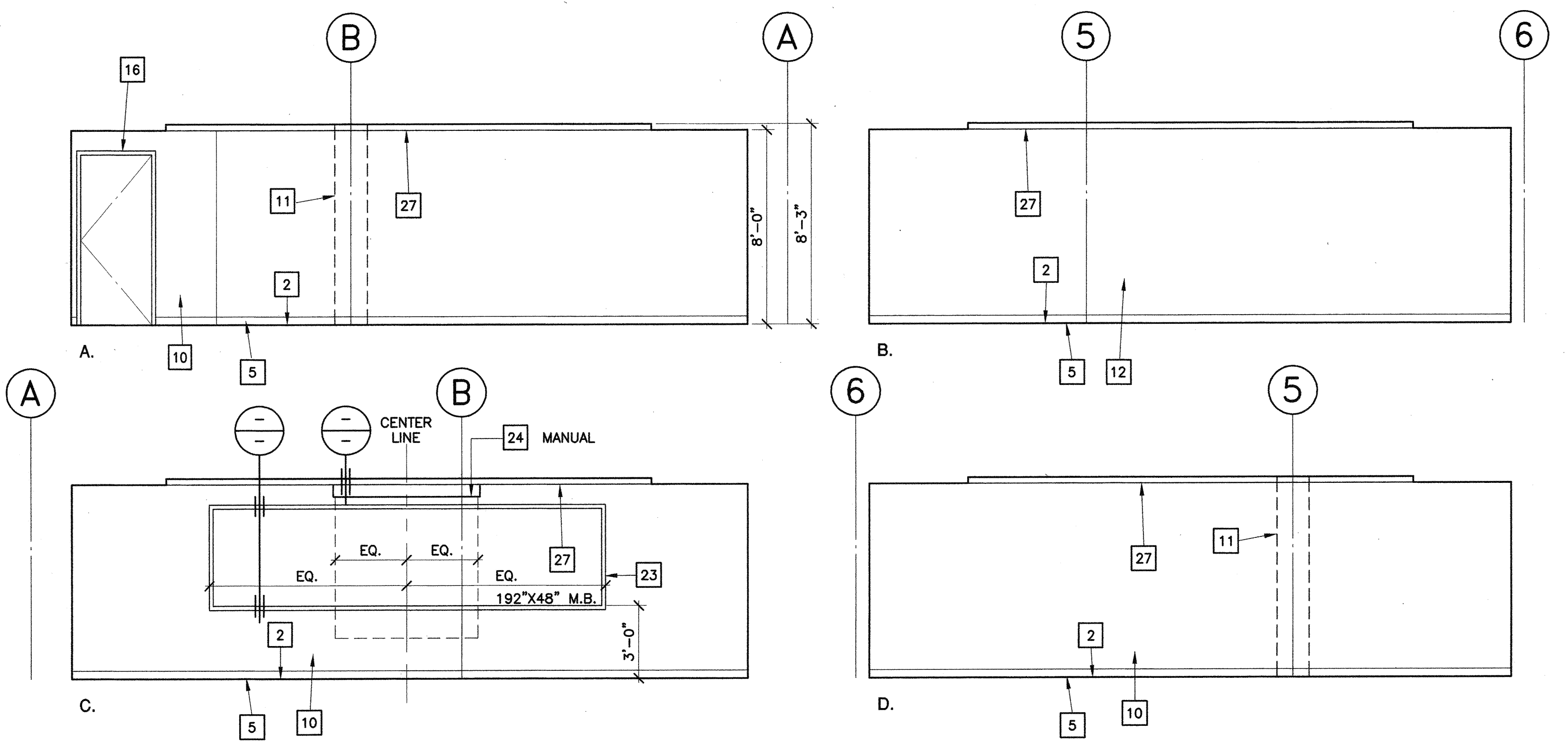
All notes, design interpretations and items indicated or represented by this drawing are owned by and are the property of Kruger-Bensen-Ziemer, AIA architects, and were created, issued and developed for use on, and in connection with, the project(s) shown. None of such ideas, designs, arrangements or plans shall be used by or disclosed to any person, firm or organization for any purpose whatsoever without the written permission of Kruger-Bensen-Ziemer.

CENTER FOR ADVANCED LEARNING TECHNOLOGY  
 SKYLINE COLLEGE  
 SAN MATEO COUNTY COMMUNITY COLLEGE DISTRICT  
 SAN BRUNO, CALIFORNIA 94066  
 3300 COLLEGE DRIVE

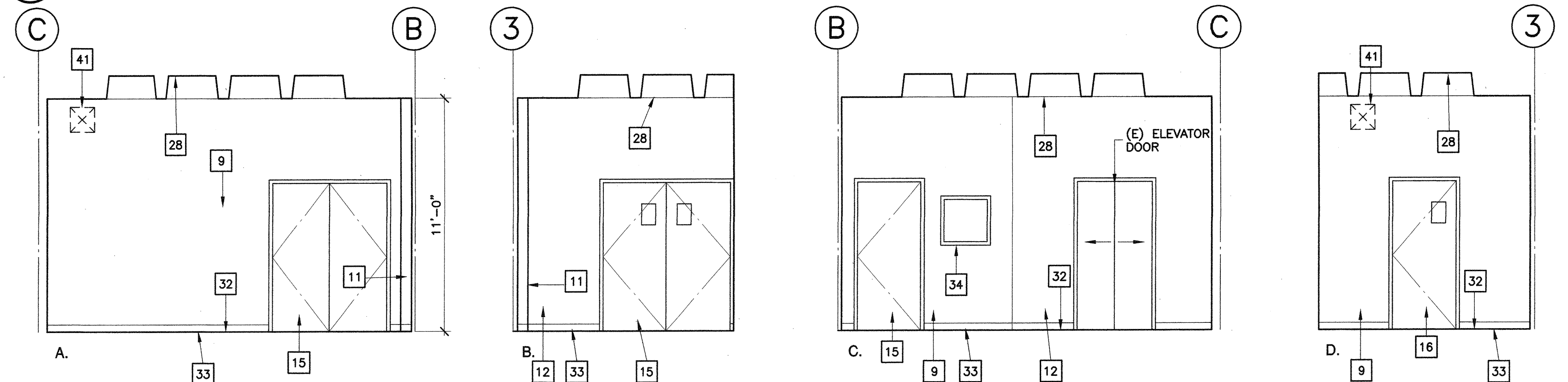
**Numbered Notes:** THIS SHEET ONLY

- 1 (E) CONC. SLAB W/ (N) VINYL COMPO. FLR. TILE.
- 2 (N) 3" HIGH ACCESS FLOOR SYSTEM OVER (E) CONC. SLAB.
- 3 (N) 27" HIGH ACCESS FLOOR SYSTEM OVER (E) CONC. SLAB.
- 4 (N) ACCESS FLOOR RAMP SYSTEM.
- 5 (N) 4" HIGH RUBBER BASE
- 6 (N) EXTERIOR ALUM. STOREFRONT GLAZING SYSTEM.
- 7 (N) INTERIOR ALUM. STOREFRONT GLAZING SYSTEM.
- 8 (N) HOLLOW METAL FRAME W/ GLAZING (45 MINUTE @ CORR. 'E')
- 9 (E) GYP. BD.
- 10 (N) GYP. BD.
- 11 (E) EXPOSED CONC. COL.
- 12 (E) EXPOSED CONC. WALL.
- 13 (E) CONC. WALL W/ PLASTER FIN.
- 14 (E) EXPOSED CONC. WALL PANEL W/ METAL FRAMED FIXED GL.
- 15 (E) DOOR
- 16 (N) DOOR
- 17 (N) HANDRAIL
- 18 (N) OPERABLE WALL PANELS (SHOWN IN STACKED POSITION).
- 19 (N) STD. HT. BASE CAB. & TOP W/ W.I.C. DESIGN SERIES NUMBER- SEE DET. 6/A9.4 & 8/A9.4
- 20 (N) WALL CAB W/ W.I.C. DESIGN SERIES NUMBER - SEE DET. 5/A9.4
- 21 ACCESS FLOOR TRANSITION RAMP. SEE -/-
- 22 (N) ADJUSTABLE SHELVES
- 23 (N) MARKER BOARD.
- 24 (N) WALL MOUNTED PROJECTION SCREEN, (ELECTRIC OR MANUAL). SEE -/-
- 25 (N) DRAPERY POCKET W/ ELECTRIC ROLL DOWN SHADES.
- 26 (E) GYP. BD. SOFFIT.
- 27 (N) GYP. BD. SOFFIT
- 28 (E) EXPOSED CONC. WAFFLE SLAB
- 29 (N) SUSPENDED LIGHT FIXT.- SEE ELECT.
- 30 (N) EXPOSED H.V.A.C. DUCT- SEE MECH.
- 31 (N) HEAD TRACK @ (N) OPERABLE WALL.
- 32 (E) CONC. SLAB W/ (E) VINYL COMPO. FLR. TILE.
- 33 (E) 4" HIGH RUBBER BASE.
- 34 (E) F.E. CAB.
- 35 (E) ELEV. DR.
- 36 (N) SLIDING PANELS IN FRONT OF (N) ADJUST. SHELVES.
- 37 (E) ELECT. PANEL.
- 38 (N) ACCESSIBLE WORK STATION: SEE -/-  
TOP @ +30" W/ 28" H. x 38" W. x 24" D. CLR. KNEE SPACE
- 39 (N) HORIZ. STABILIZING CABLE TO MATCH SUSPENSION CABLE LIGHT FIXTS. TO STRUCT. IN WALL OR SOFFIT SOFFIT- SEE -/-
- 40 (N) SIGN- SEE DOOR SCHEDULE
- 41 (E) EXPO. H.V.A.C. DUCT TO BE REMOVED- PATCH (E) OPENING W/ MTL. STUDS & GYP. BD. TO MATCH (E)- SEE MECH.
- 42 (N) CONT. SURF. MTD. ELECT. STRIP MOULDING- SEE ELECT.

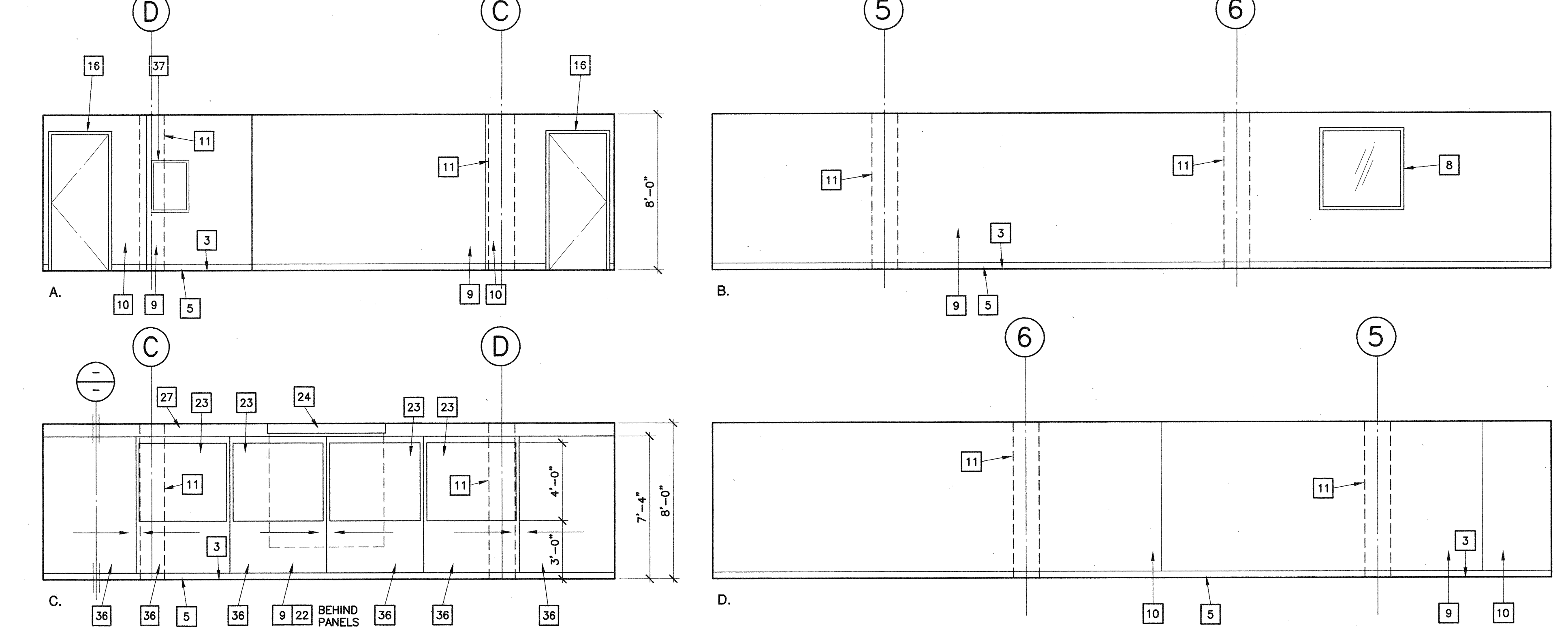
3"0 OR 3 1/2" VERIFY W/ MANUF.



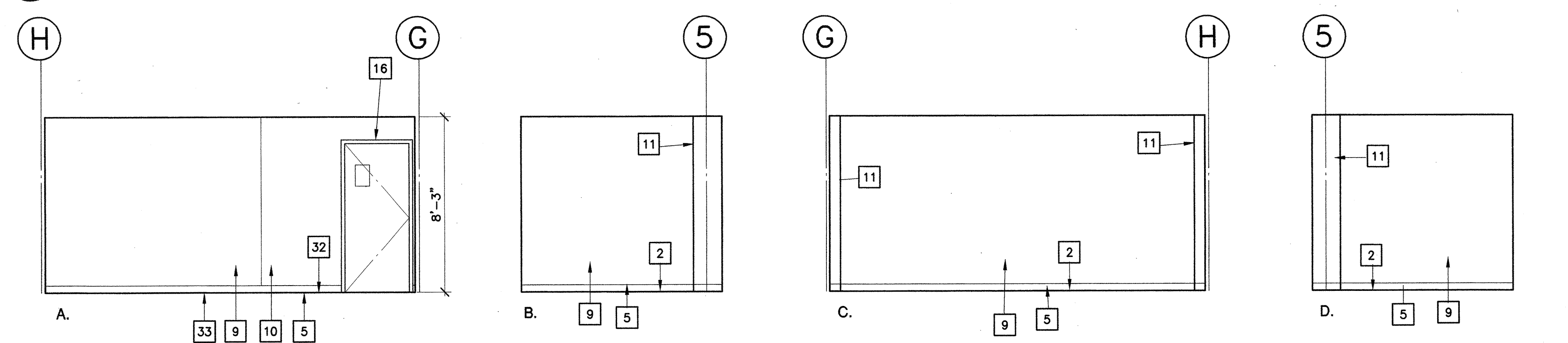
**1 Computer Lab 2110**  
SCALE: 1/4" = 1'-0"



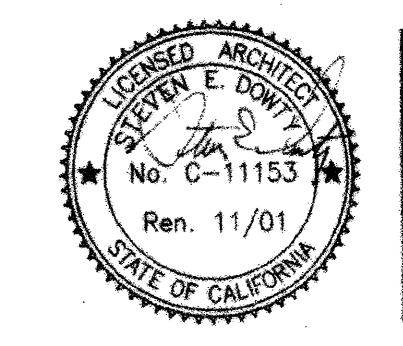
**2 Vestibule 128**  
SCALE: 1/4" = 1'-0"



**3 Computer Lab 2111**  
SCALE: 1/4" = 1'-0"



**4 Lab Service 2117**  
SCALE: 1/4" = 1'-0"



IDENTIFICATION STAMP  
DIV. OF THE STATE ARCHITECT  
OFFICE OF REGULATION SERVICES  
No. C-11153  
Ren. 11/01  
APPL 01-103735  
DATE 06/21/01

NO.	DESCRIPTION	DATE	BY

DRAWN L.J.L.  
CHECKED SD  
DATE 3/21/01  
JOB NO. 98-03  
SHEET TITLE  
INTERIOR ELEVATIONS

SHEET 15  
A 5.2  
OF 21