

**KRUGER BENSEN ZIEMER ARCHITECTS, INC.**  
30 W. ARRELLAGA  
805/963.1725

**ZIEMER AIA**  
SANTA BARBARA, CA  
93101

**STEVE DOWTY, A.I.A.**  
PRINCIPAL IN CHARGE

**GERALD SHUSTA**  
PROJECT ARCHITECT

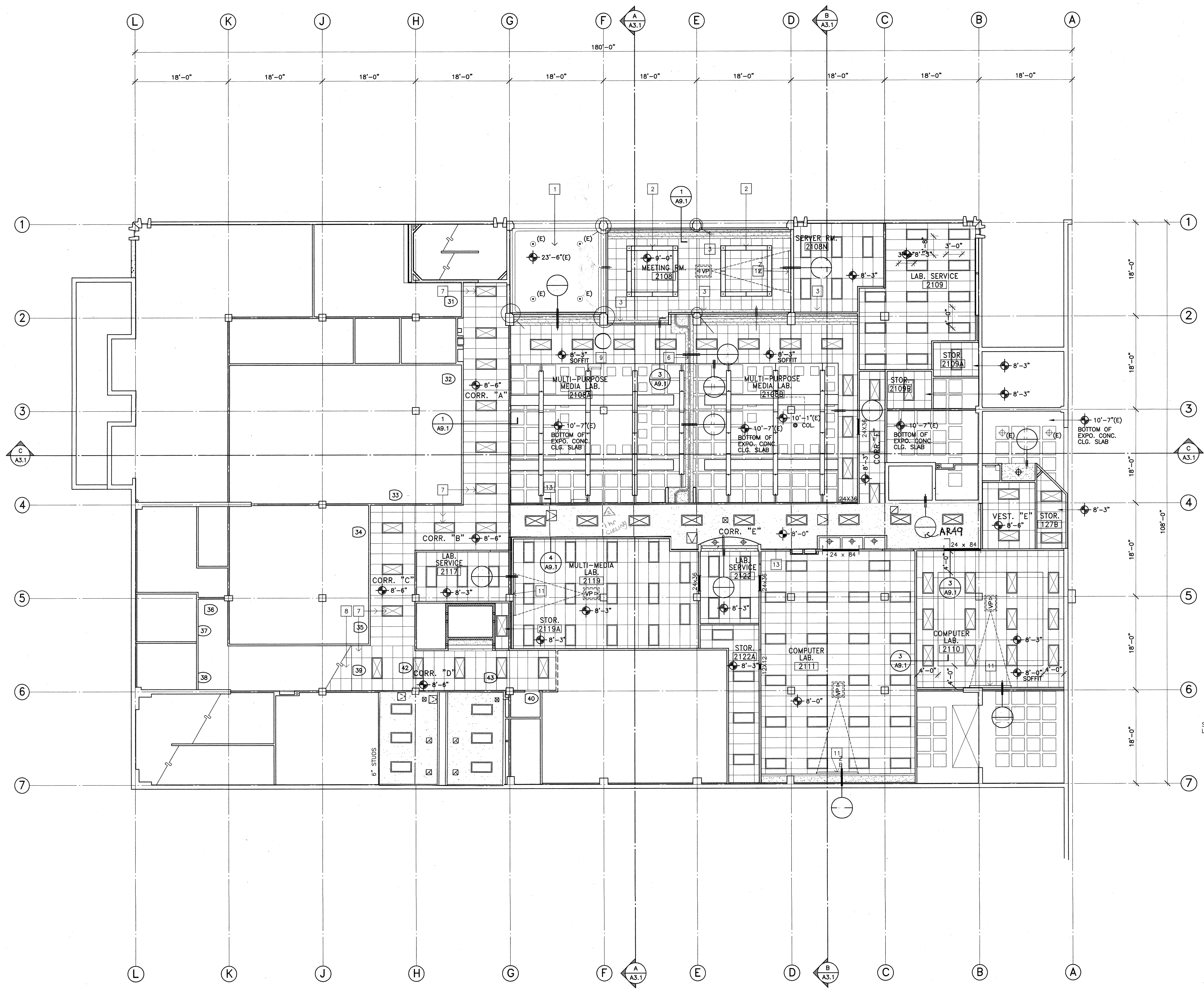
All notes, design arrangements and plans indicated or represented by this drawing are intended to be used as the property of Kruger-Bensen-Ziemer. All materials, and work created, revised and developed for use on, and in connection with, the specified project. None of such items, designs, arrangements or plans shall be used by or disclosed to any person, firm or corporation for any purpose whatsoever without the written permission of Kruger-Bensen-Ziemer.

**Numbered Notes:** THIS SHEET ONLY

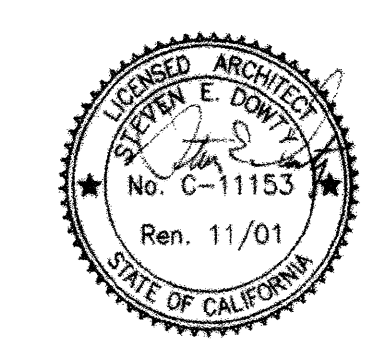
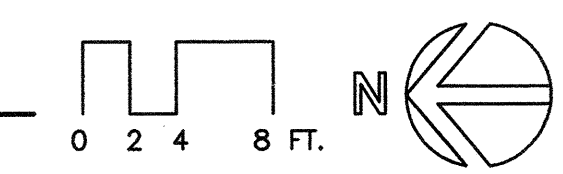
- 1 (E) CONC. SOFFIT TO REMAIN.
- 2 (N) SUSPENDED LIGHT FIXT. W/ BOTTOM @ + 8'-0" ABOVE FINISH FLOOR.
- 3 (N) CLG. POCKET FOR (N) ELECTRIC ROLL DOWN SHADES
- 4 (N) 12" x 24" EXPOSED SUSPENDED OVAL HVAC DUCT- SEE MECH. PLAN.
- 5 (N) SUSPENDED LIGHT FIXT. W/ BOTTOM @ + 8'-0" ABOVE FINISH FLOOR.
- 6 (N) HEAD TRACK @ (N) OPERABLE WALL PANEL SYSTEM.
- 7 REMOVE (E) SUSPENDED CLG. TILES, GRID & LIGHT FIXTS.- INSTALL (N) 24" x 48" SUSPENDED CLG. GRID & TILES- SEE ELEC. PLAN FOR (N) LIGHTS.
- 8 (E) SUSPENDED CLG. SYSTEM GRID & TILES TO REMAIN- ALIGN (N) GLG. GRID W/ (E) @ JOINT.
- 9 (N) HORIZ. STABILIZING CABLE TO MATCH SUSPENSION CABLES FROM LIGHT FIXTS. TO STRUCTURE IN WALL OR SOFFIT.
- 10 (N) FIRE RATED, OVERHEAD, ELECTRICALLY OPERATED ROLL DOWN COUNTER DOOR.
- 11 (N) WALL MTD. MANUAL PROJECTION SCREEN.
- 12 (N) WALL MTD. MANUAL PROJECTION SCREEN.
- 13 (N) FIRE RATED SUSPENSION CLG. SYSTEM SEE -/-

**Legend:** THIS SHEET ONLY

- (N) 24"x24" SUSPENDED "T-BAR" ACOUSTICAL CEILING SYSTEM.  
CLG. HT. ABOVE FINISH FLOOR- TYP. SEE SHT.A-9.0 FOR TYP. DETAILS.
- (N) 24" x 48" SUSPENDED "T-BAR" ACOUSTICAL CEILING SYSTEM.  
SEE SHT.A-9.0 FOR TYP. DETAILS.
- (E) EXPOSED CONC. "WAFFLE SLAB" @ FLR. 2 ABOVE.  
REMOVE (E) ACOUSTIC PLAS., FILL VOIDS IN EXPO. CONC. & PAINT IN (N) EXPO. CONDITIONS.
- GYP. BOARD OR CEM. PLAS. CEILING/SOFFIT AREAS.  
SEE -/-
- (N) OVERHEAD VIDEO PROJECTOR- PROVIDE CEILING MOUNT FOR OWNER SUPPLIED PROJECTOR.
- (N) CEILING MOUNTED EXIT SIGN- SEE ELECTRICAL PLAN.
- (N) WALL MOUNTED EXIT SIGN- SEE ELECTRICAL PLAN.
- (N) 24"x24" RECESSED FLUORESCENT LIGHT FIXTURE- SEE ELECTRICAL PLAN.
- (N) 24"x48" RECESSED FLUORESCENT LIGHT FIXTURE- SEE ELECTRICAL PLAN.
- (N) 24"x48" SURFACE MOUNTED FLUORESCENT LIGHT FIXTURE- SEE ELECTRICAL PLAN.
- (N) PENDANT TYPE FLUORESCENT LIGHT FIXTURE- SEE ELECTRICAL PLAN.
- (N) PENDANT TYPE FLUORESCENT LIGHT FIXTURE, INTERCONNECTED AGAINST INDIVIDUAL MOVEMENT- SEE ELECTRICAL PLAN.
- (E) RECESSED DOWNLIGHT FIXTURE.
- (N) RECESSED DOWNLIGHT FIXTURE- SEE ELECTRICAL PLAN.
- (E) SUSPENDED DOWNLIGHT FIXTURE.
- (N) CEILING DIFFUSER- SEE MECHANICAL PLAN.
- (N) RETURN AIR REGISTER- SEE MECHANICAL PLAN.
- (N) EXHAUST REGISTER- SEE MECHANICAL PLAN.
- (N) FRAMED OPENING IN WALL ABOVE CEILING FOR RETURN AIR- SEE MECHANICAL PLAN.



**1 Reflected Ceiling Plan**  
SCALE: 1/8"=1'-0"



IDENTIFICATION STAMP  
DIV. OF THE STATE ARCHITECT  
OFFICE OF REGULATION SERVICES  
APPL 01-103795  
DATE: 06/27/01

**CENTER FOR ADVANCED LEARNING TECHNOLOGY**  
**SKYLINE COLLEGE**  
 SAN MATEO COUNTY COMMUNITY COLLEGE DISTRICT  
 SAN BRUNO, CALIFORNIA 94066  
 3300 COLLEGE DRIVE

*ASBUILTS*

NO.	DESCRIPTION	DATE	BY
REVISION			

DRAWN	G.S.
CHECKED	S.D.
DATE	3/21/01
JOB NO.	98-03
SHEET TITLE	
REFLECTED CEILING PLAN	
SHEET 7	
A 2.2	
OF 21	