

**KRUGER BENSEN ZIEMER ARCHITECTS, INC.**  
 30 W. ARRELLAGA  
 805/963.1728 SANTA BARBARA, CA 93101

**STEVE DOWTY, A.I.A.**  
 PRINCIPAL IN CHARGE

**GERALD SHUSTA**  
 PROJECT ARCHITECT

All ideas, design arrangements and plans indicated or represented by this drawing are owned by and are the property of Kruger-Bensen-Ziemer, Inc. No part of this drawing, including any drawings, designs, arrangements or plans shall be used by or disclosed to any person, firm or corporation for any purpose whatsoever without the written permission of Kruger-Bensen-Ziemer, Inc.

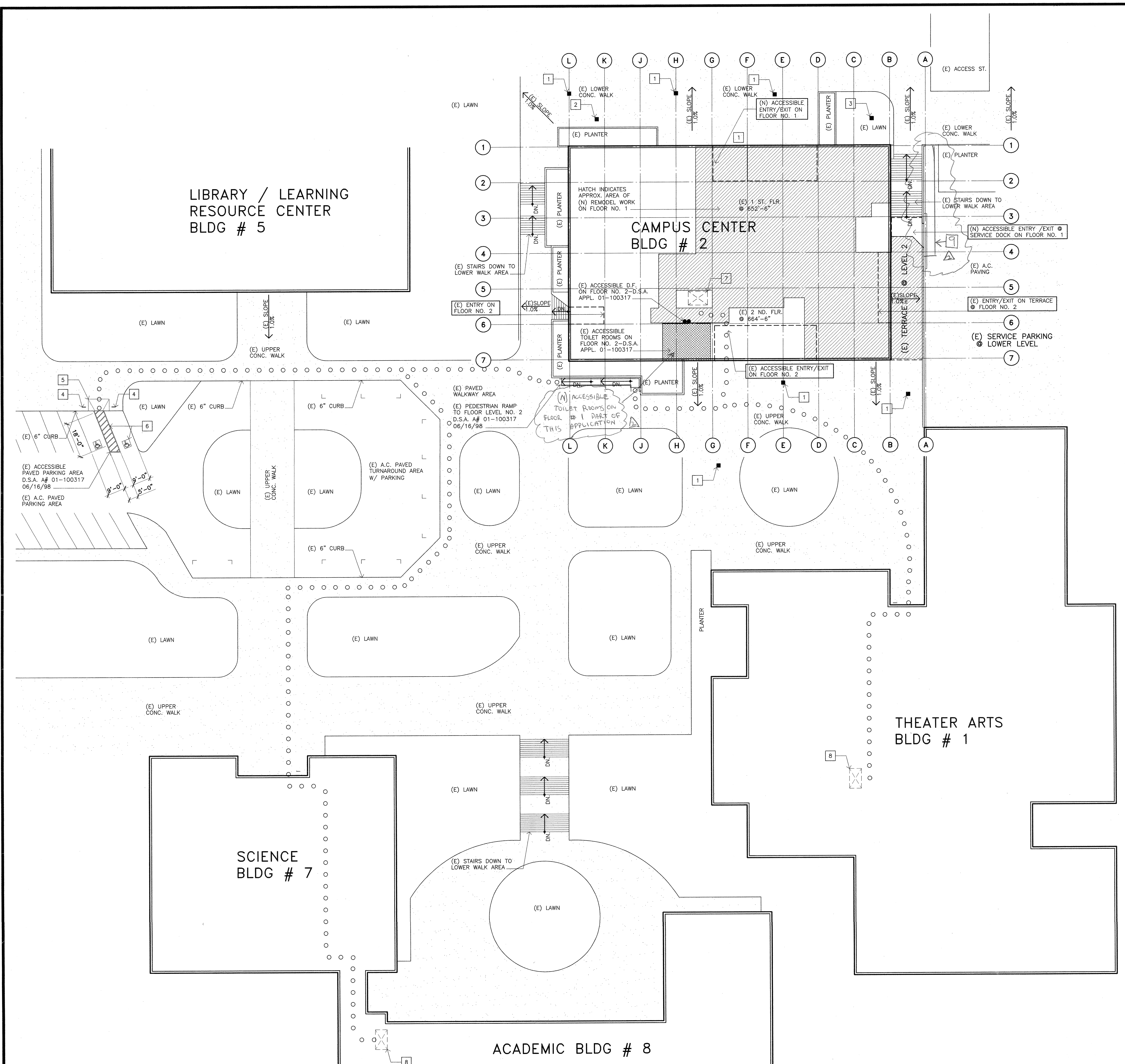
**Numbered Notes:** THIS SHEET ONLY

- 1 (E) CATCH BASIN SEE DET. 2/A1.0
- 2 (E) WATER METER COVER FLUSH W/ CONC. WALK
- 3 (E) GAS METER W/ FLUSH COVER
- 4 (E) ACCESSIBLE PARKING SIGNS
- 5 (E) ACCESSIBLE PARKING AREA CURB RAMP
- 6 (E) ACCESSIBLE PAINTED PARKING STALLS & SYMBOLS
- 7 (E) ACCESSIBLE ELEVATOR D.S.A. #01-100317
- 8 (E) BLDG. ELEVATOR TO ALL FLOORS

9 (N) SLOPING CONC. WALK

**LEGEND**

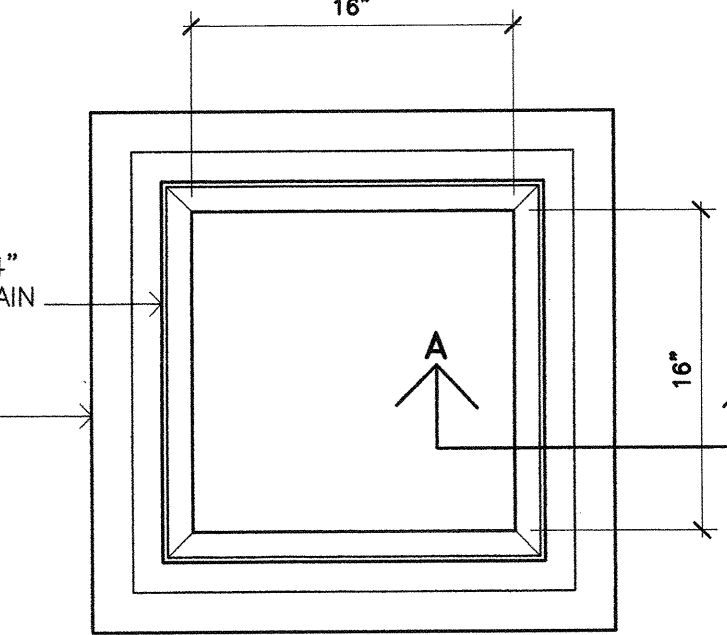
- ○ ○ ○ ○ = (E) ACCESSIBLE PATH OF TRAVEL AS INDICATED ON PLAN IS BARRIER FREE ACCESS WITHOUT ANY ABRUPT VERTICAL CHANGES EXCEEDING 1/2" AT 1:2 MAXIMUM SLOPE, EXCEPT THAT LEVEL CHANGES DO NOT EXCEED 1/4" VERTICAL MAXIMUM CROSS SLOPE OF 2%.
- [Hatched Box] = APPROXIMATE AREA OF REMODEL ON FLOOR LEVEL NO. 1; D.S.A. #01-100317, 6/16/98
- [Diagonal Hatched Box] = APPROXIMATE AREA OF REMODEL ON FLOOR LEVEL NO. 2; (WORK UNDER THIS APPLICATION)



NOTE: GALVANIZE ENTIRE ASSEMBLY AFTER FABRICATION.

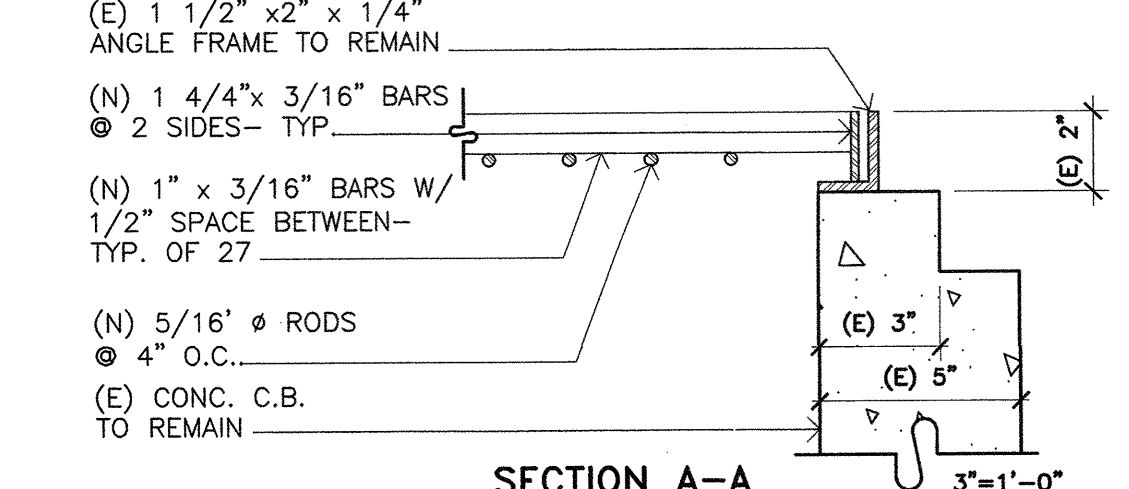
- (N) 1/2" PIN-MATCH (E) SIZE & LOCATION ON FRAME
- (N) 5/16" Ø RODS @ 4" O.C.
- (N) 1" x 3/16" BARS W/ 1/2" SPACE BETWEEN-TYP. OF 27
- (N) 1 4/4" x 3/16" BARS @ 2 SIDES-TYP.
- (N) 3/8" Ø BOLT-MATCH (E) LENGTH & LOCATION.

PLAN OF (N) GRATE 1 1/2"x1'-0"



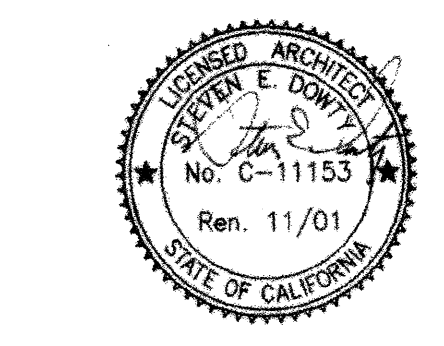
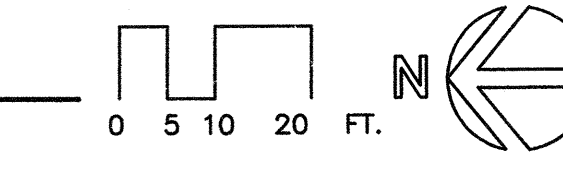
- (E) 1 1/2" x2" x 1/4" ANGLE FRAME TO REMAIN
- (E) CONC. C.B. TO REMAIN

PLAN OF (E) C.B. 1 1/2"x1'-0"



2 (N) C.B. Grate @ (E) C.B. SCALE: AS NOTED

1 Partial Campus Plan / Site Plan SCALE: 1"=20'



IDENTIFICATION STAMP  
 DIV. OF THE STATE ARCHITECT  
 OFFICE OF REGULATION SERVICES  
 No. C-11153  
 Rem. 11/01  
 DATE 06/21/01

**CENTER FOR ADVANCED LEARNING TECHNOLOGY**  
**SKYLINE COLLEGE**  
 SAN MATEO COUNTY COMMUNITY COLLEGE DISTRICT  
 SAN BRUNO, CALIFORNIA 94066  
 3300 COLLEGE DRIVE

**ABULTS**

NO.	DESCRIPTION	DATE	BY

DRAWN	G.S.
CHECKED	S.D.
DATE	3/21/01
JOB NO.	98-03
SHEET TITLE	PARTIAL CAMPUS PLAN / SITE PLAN
SHEET 3	A 1.0
OF 21	

J:\Campus\1997\9803\A1.dwg F:\1 06' 25' 14.25' 48' 2001