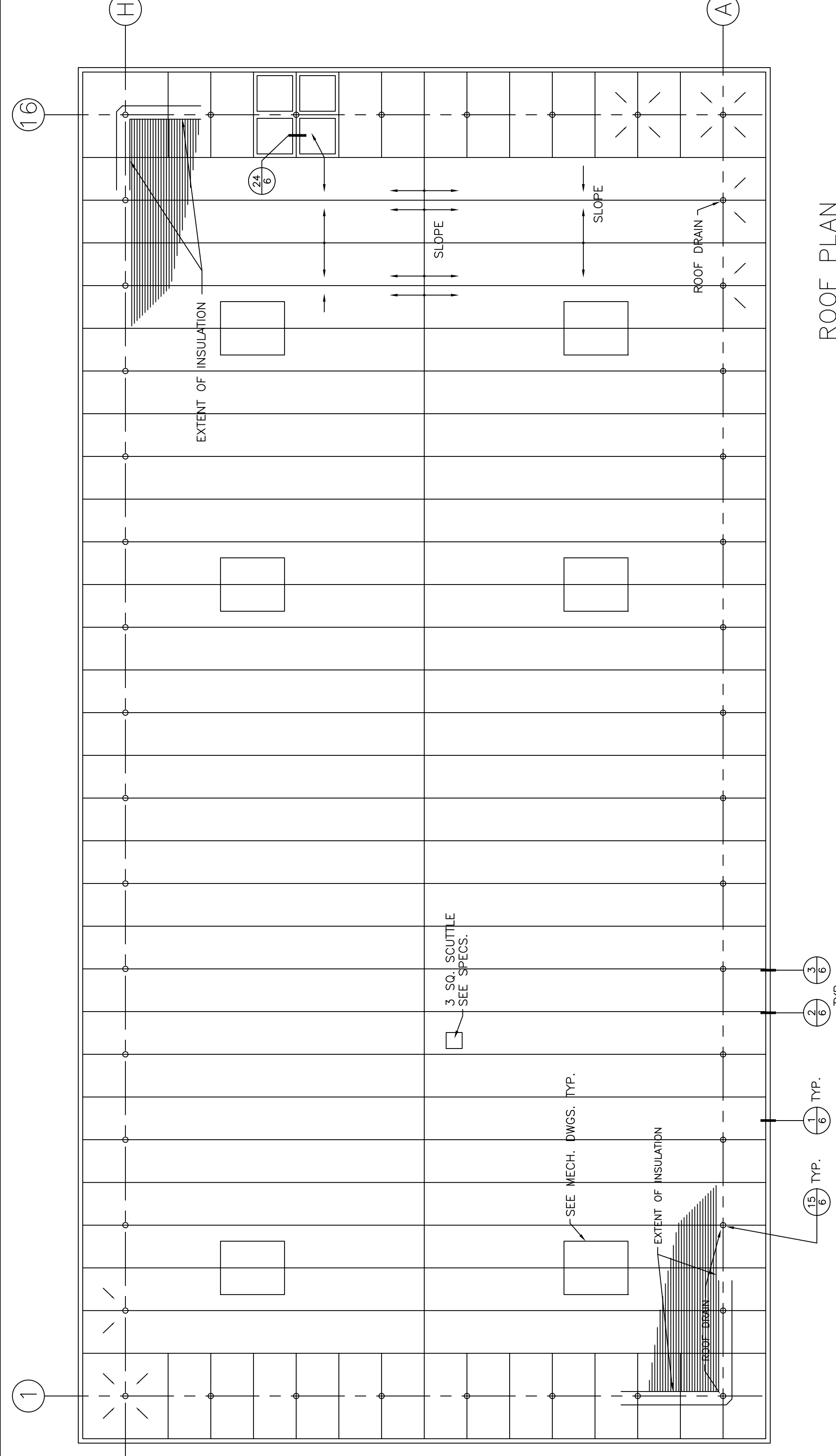
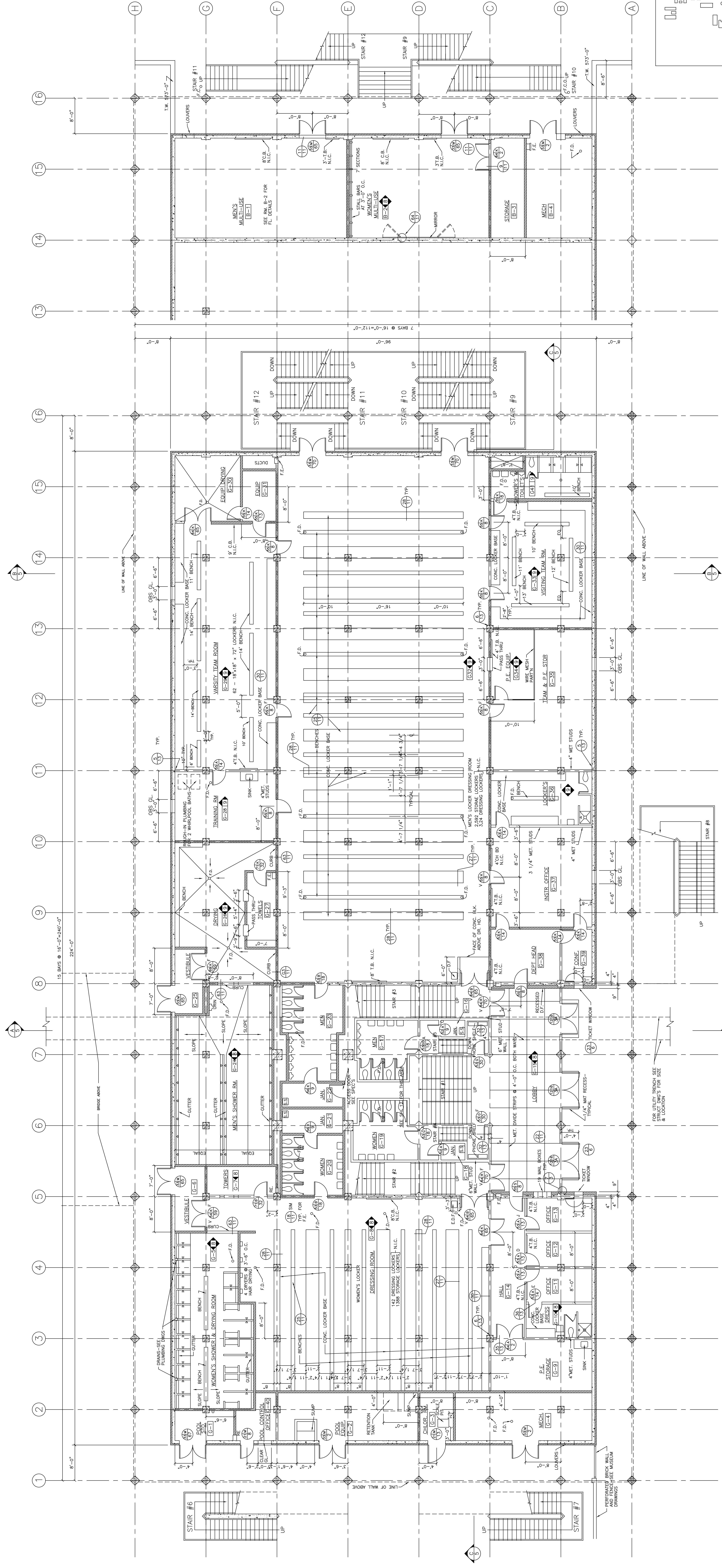


**GENERAL NOTES**

1. EXTERIOR STAIRS-SEE SH. #7 FOR PLANS & ELEVATIONS
2. INTERIOR STAIRS SEE SH. #12 FOR PLANS & ELEVATIONS
3. TOILET ROOMS SEE SH. #12 FOR PLANS & ELEVATIONS
4. ALL PARTITIONS UNLESS OTHERWISE DIMENSIONED, TO BE CENTERED ON CENTERLINES OF CONCRETE WALLS & COLUMNS. SEE STRUCTURAL DRAWINGS FOR LOCATION OF CONCRETE WALLS & COLUMNS.
5. ALL PARTITIONS TO BE NOMINAL 4" CONCRETE BLOCK WALLS OR 1 1/4" STEEL STUDS @ 16" O.C. WITH 3/8" COPPER LATH & 2/8" PLASTER BOTH SIDES UNLESS OTHERWISE SHOWN EXCEPT @ TOILET 1" MET. LATH & PLAS.
6. AT FURRED CEILING CONDITIONS, STEEL STUD & PLASTER PARTITIONS SHALL BE FINISHED WITH GYP. BOARD. ALL PARTITIONS SHALL TERMINATE AT UNDERSIDE OF CONCRETE FLOOR OR ROOF SYSTEM.
7. ALL "CROSSED OUT" DETAILS DO NOT APPLY TO THIS BLD'G
8. ALL FLOORS TO PITCH TO FLOOR DRAINS

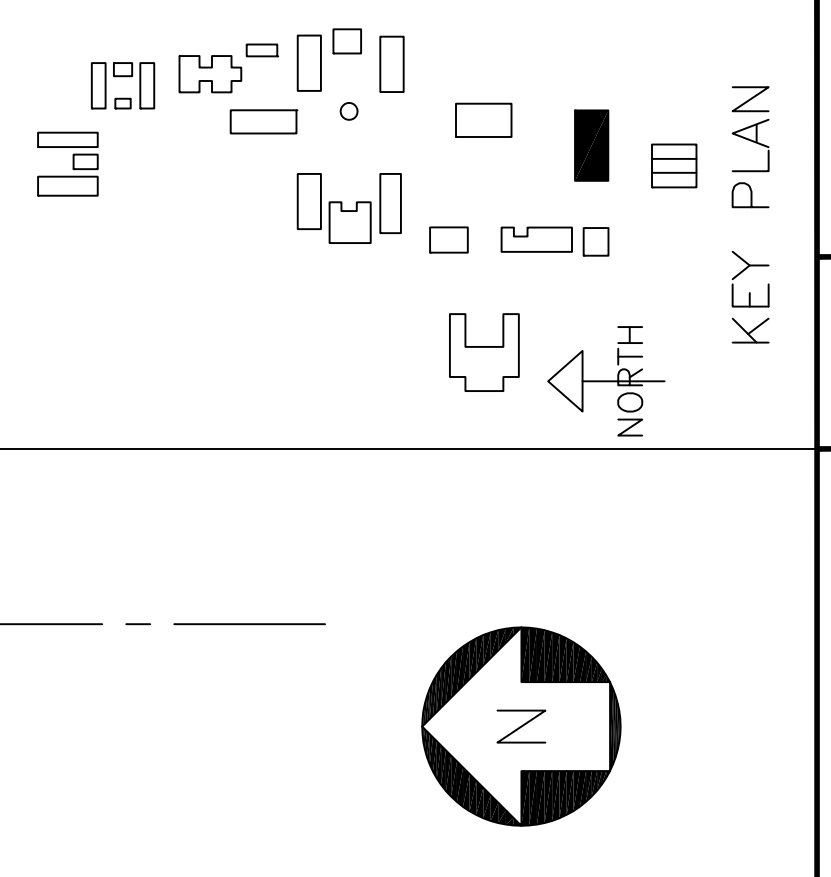


**ROOF PLAN**  
SCALE 1/16"=1'-0"



**GROUND FLOOR PLAN**  
SCALE 1/8"=1'-0"

**BASEMENT PLAN**  
SCALE 1/8"=1'-0"



GEORGE W. HOFFMANN ARCHITECT <b>SAN MATEO JUNIOR COLLEGE DISTRICT</b>	JULIO LI. BORTOLAZZO	JOHN CARL WARNECKE A.I.A. ARCHITECT	JOHN A. BLUME & ASSOC. ENGINEERS STRUCTURAL ENGINEERS ROYTON HAMAMOTO AND MATES MECHANICAL & ELECTRICAL ENGINEERS (LICENSED ENGINEERS)	JOHN CARL WARNECKE A.I.A. ARCHITECT 1111 NEW MONTGOMERY ST. • SAN FRANCISCO COLLEGE HEIGHTS CAMPUS SAN MATEO, CALIF.	JOB NO. 54-27-J DRAWN BY R.O. CHECKED BY WMA	DATE 1 DEC. 1969	GYMNASIUM FLOOR PLAN	SHEET NO. <b>11</b> OF 13
	KEY PLAN							