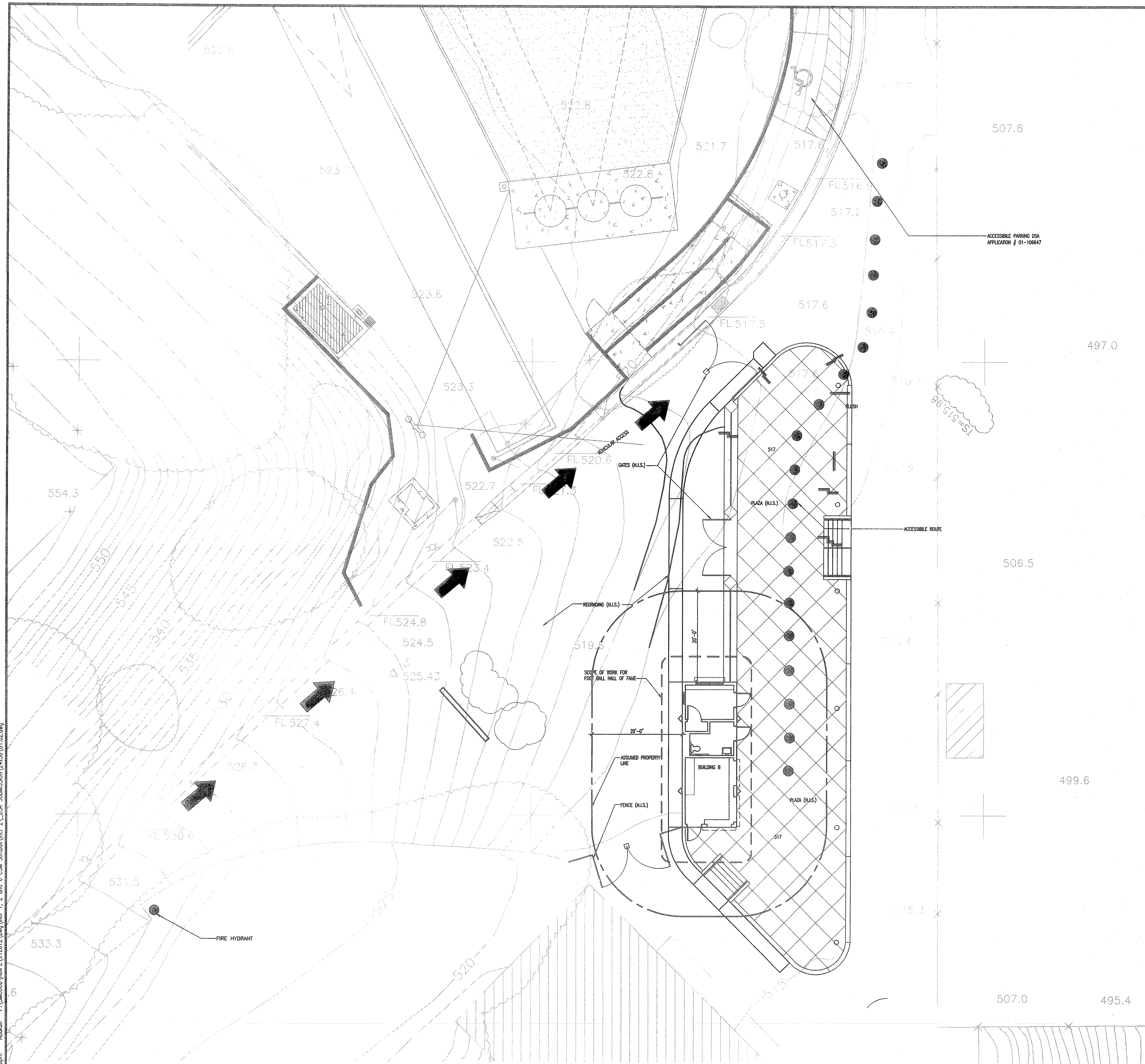


P:\S\0000\AHP2\912612\DWG\1, 2 and 6 CSM Softball\1ncr 2_L_DSA_S\MISSION\24x36\G1.02.dwg
 11/09/2007 - 11:16pm Abolish



PLAN KEY NOTES

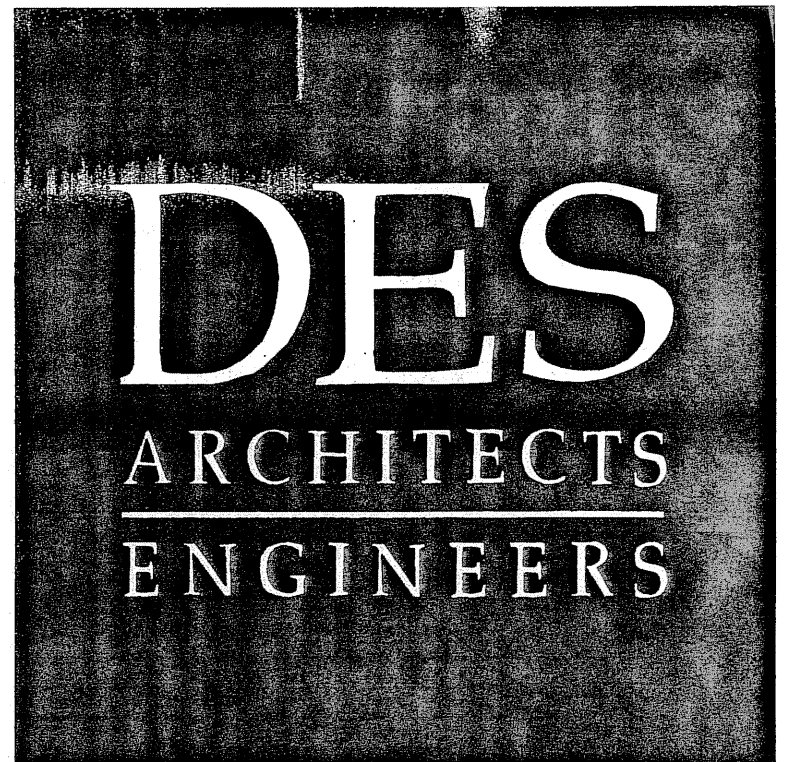
N.I.S. = NOT IN DSA APPLICATION SCOPE

SYMBOLS/ LEGENDS

- AREAS OF WORK
- PEDESTRIAN ACCESSIBLE PATH OF TRAVEL
- ➔➔➔ VEHICULAR ACCESS

BASIC BUILDING LIMITATIONS ANALYSIS

ALLOWABLE AREA AND HEIGHTS		ACTUAL	
USE GROUP	HEIGHT/ AREA	VN	VN
BUILDING B	H	2 STORIES	1 STORY
	A	8000 S.F.	384 S.F.



399 Bradford Street Redwood City, Ca. 94063
 Tel: (650) 364-6453
 Fax: (650) 364-2618
 www.des-ae.com

SARAMARK INCORPORATED
 SAN JOSE, CALIFORNIA 95154
 Ph: (408) 971-3881
 Fax: (408) 971-3534

ROBERT A. BOTHMAN, INC.
 General Engineering and Building Contractors
 650 QUINN AVENUE
 SAN JOSE, CA. 95112
 Ph: (408) 279-2277
 Fax: (408) 279-2281

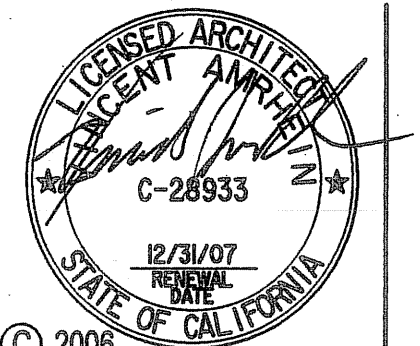
SAN MATEO COUNTY COMMUNITY COLLEGE DISTRICT ATHLETIC FIELDS PHASE 2
 COLLEGE OF SAN MATEO SOFTBALL FIELD TEAM ROOM & FOOTBALL HALL OF FAME
 San Mateo, Ca. 94402
 1700 W. Hillsdale Blvd.

ACCESSIBILITY AND SCOPE OF WORK

ISSUE DATE:	DESCRIPTION:
DSA 04/26/07	DSA SUBMISSION

DRAWN BY: A.BAKSH
 REVIEWED BY: V.AMRHEIN
 APPROVED BY: V.AMRHEIN
 DES PROJECT NO.: 9126.12

IDENTIFICATION STAMP
 DIVISION OF THE STATE ARCHITECT
 APPL. #: 01-108848
 FILE #: 41-C1
 AC AC FLS [Signature] SS [Signature]
 DATE: OCT 10 2007



SHEET NO. **G1.02**