

399 Bradford Street Redwood City, Ca. 94063
Tel: (650) 364-6453
Fax: (650) 364-2618
www.des-ae.com

SIEMENS

Building Technologies, Inc.

Fire Safety Division

SAN FRANCISCO BRANCH

25821 Industrial Boulevard, Suite 300

Hayward, California 94545-2891

Tel (510) 783-6000 Fax (510) 293-2100

California State C10 License No. 758796

U.L. Certificate ID No. 324787-001

ROBERT A. BOTHMAN, INC.

General Engineering and Building Contractors

650 QUINN AVENUE

SAN JOSE, CA. 95112

Ph: (408) 279-2277

Fax: (408) 279-2281

SAN MATEO COUNTY COMMUNITY COLLEGE DISTRICT ATHLETIC FIELDS PHASE 2

COLLEGE OF SAN MATEO
SOFTBALL FIELD TEAM ROOM
& FOOTBALL HALL OF FAME
San Mateo, Ca. 94402
1700 W. Hillsdale Blvd.

FIRE ALARM SITE PLAN

ISSUE:	DATE:	DESCRIPTION:
DSA	04/26/07	DSA SUBMISSION

DRAWN BY: JOVEN MANLUTAC & JERI FABIAN

REVIEWED BY: KELLY ROGERS

APPROVED BY: KELLY ROGERS

SIEMENS JOB NO: 440P-022170

IDENTIFICATION STAMP

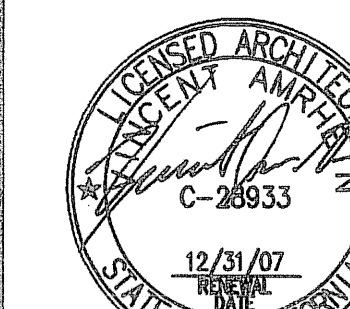
DIVISION OF THE STATE ARCHITECT

APPL. #: 01-108848

FILE #: 41-01

AC 27C

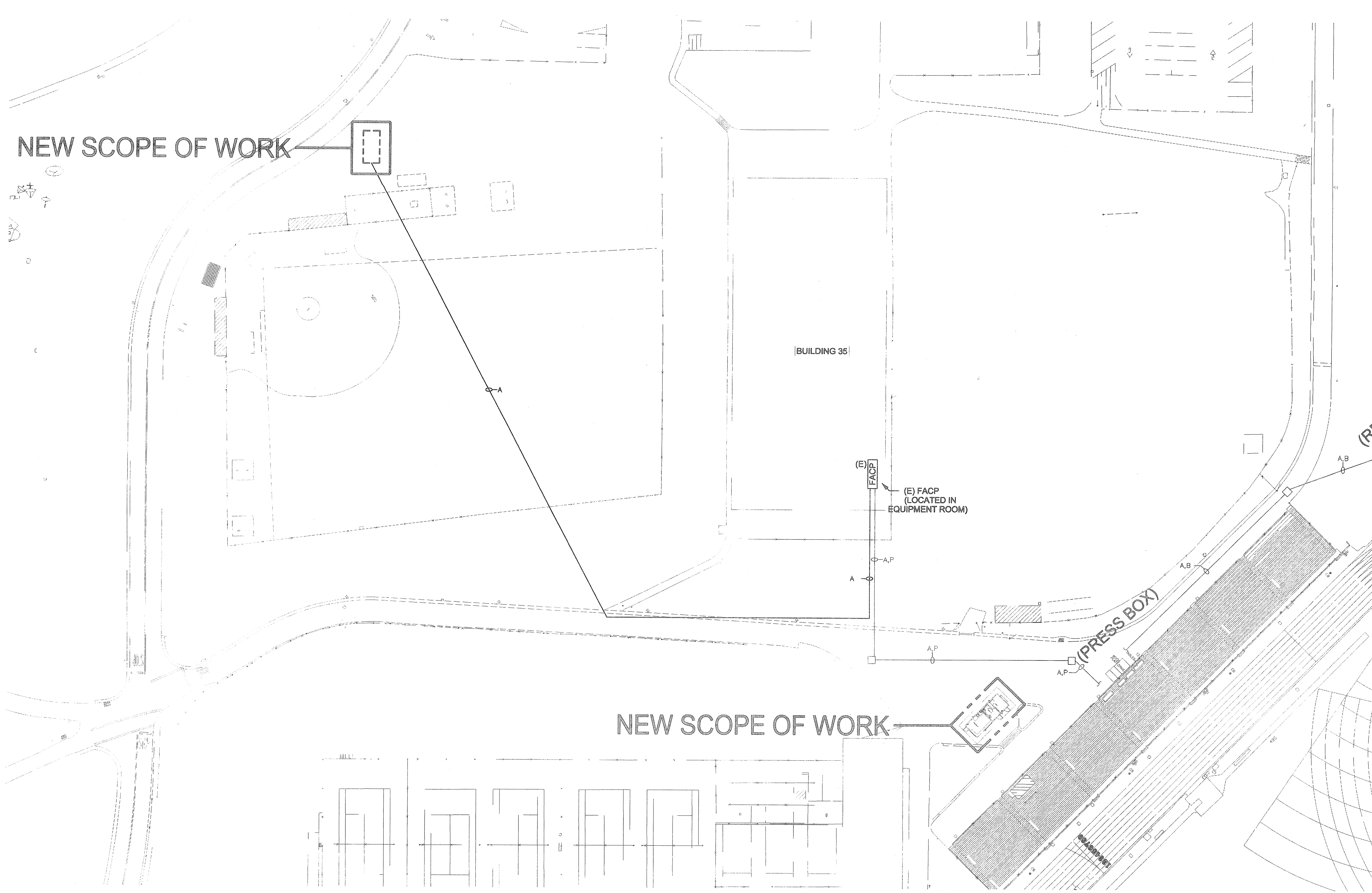
DATE: OCT 10 2007



© 2006

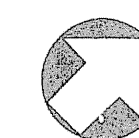
SHEET NO.

FA0.03



FIRE ALARM SITE PLAN

NOT TO SCALE



HIGHLIGHTED ITEMS ARE CONSIDERED

NEW SCOPE OF WORK