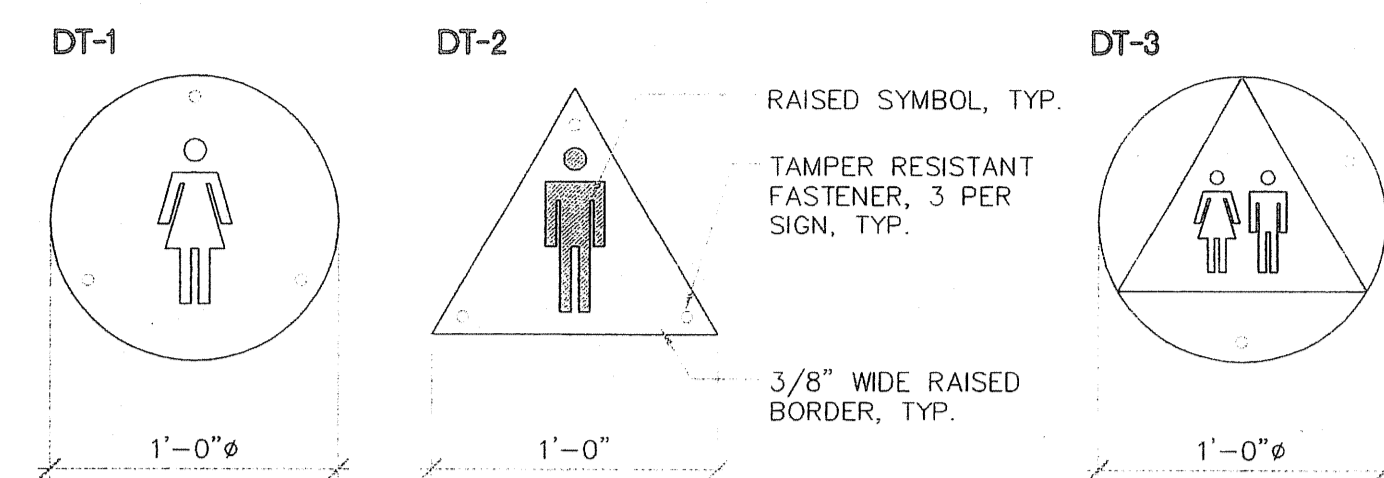
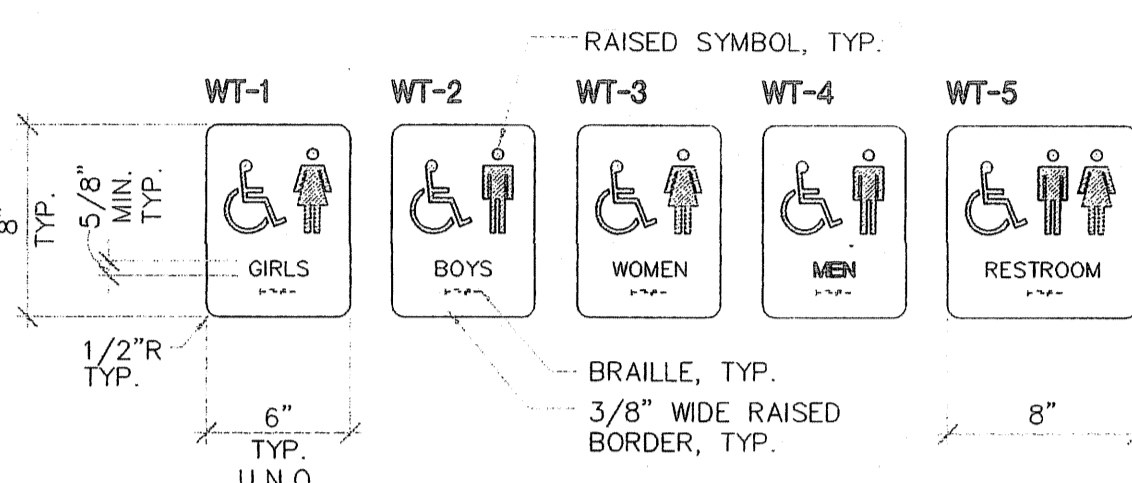


DOOR MOUNTED TOILET SIGNAGE (DT)

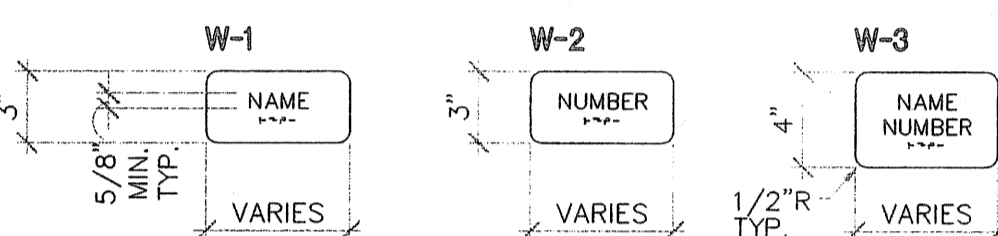


WALL MOUNTED TOILET SIGNAGE AT ACCESSIBLE TOILETS (WT)



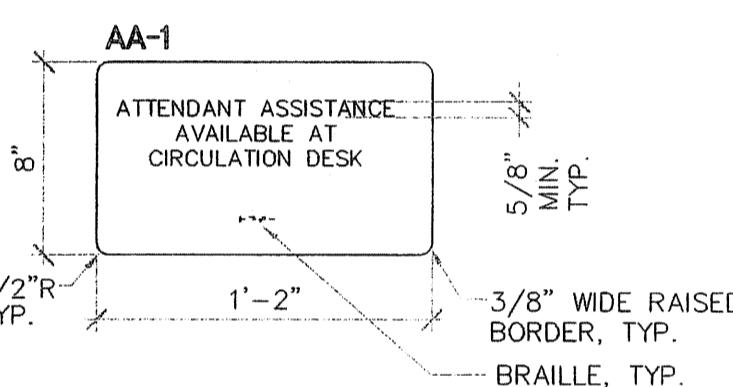
WALL MOUNTED SIGNAGE - FUNCTIONAL ROOMS (W)

COORDINATE ROOM NAME AND NUMBER WITH OWNER PRIOR TO FABRICATION. DO NOT USE IDENTIFICATION FOUND ON THE DRAWINGS, U.N.O.



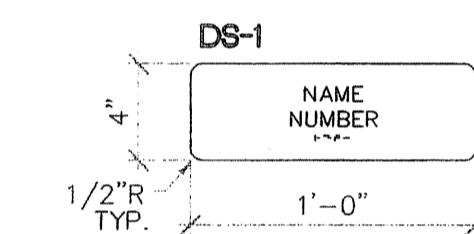
ATTENDANT ASSISTANCE SIGN (AA)

SEE INTERIOR ELEVATION FOR POSTED LOCATION.



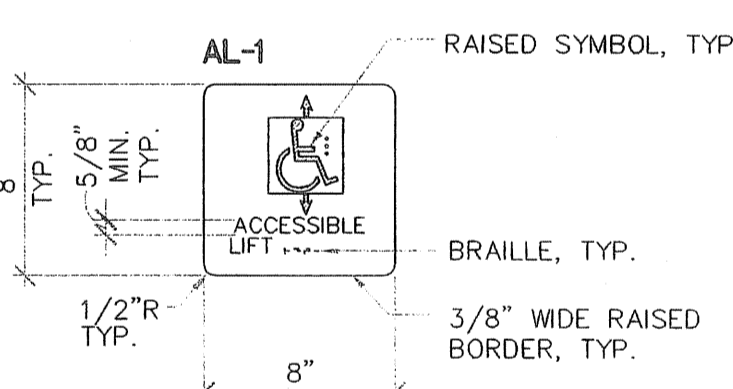
MISC DOOR MOUNTED SIGNAGE (DS)

SEE INTERIOR ELEVATION FOR POSTED LOCATION.



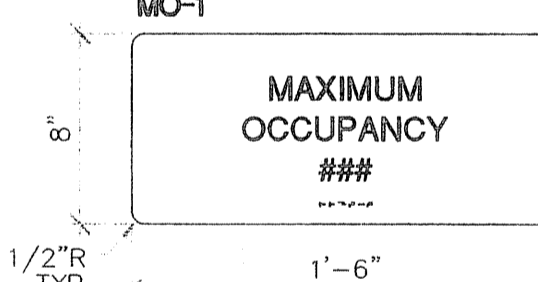
ACCESSIBLE LIFT SIGN (AL)

DIRECTIONAL ACCESSIBLE LIFT SIGNAGE



MAXIMUM OCCUPANCY SIGN (MO)

SEE INTERIOR ELEVATION FOR POSTED LOCATION.

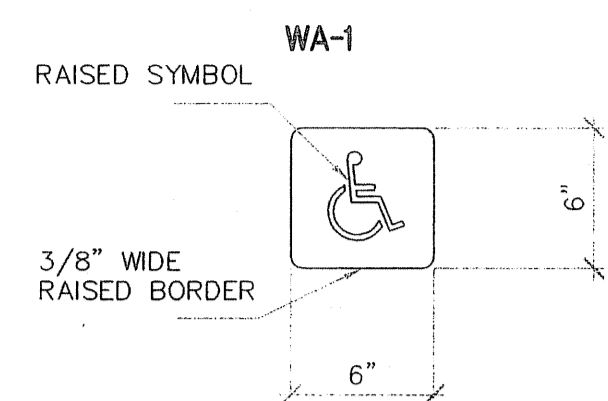


GENERAL NOTES:

- RAISED AND BRAILLE CHARACTERS (CONTRACTED CALIFORNIA GRADE 2 BRAILLE):**
- LETTERS AND NUMBERS ARE RAISED 1/32", SAN SERIF UPPER CASE CHARACTERS.
 - LETTERS ARE TO BE UPPER CASE TEXT, SIZE 5/8" TO 2"
 - LETTERS AND NUMBERS SHALL HAVE A WIDTH-TO-HEIGHT RATIO BETWEEN 3:5 AND 1:1 AND A STROKE WIDTH-TO-HEIGHT RATION BETWEEN 1:5 AND 1:10.
 - BRAILLE DOTS ARE 1/10" ON CENTER IN EACH CELL WITH 2/10" SPACE BETWEEN CELLS, MEASURED FROM THE SECOND COLUMN OF DOTS IN THE FIRST CELL TO THE FIRST COLUMN OF DOTS IN SECOND CELL. BRAILLE DOTS ARE A MINIMUM OF 1/40" ABOVE THE BACKGROUND.
- FINISH AND CONTRAST:**
- CHARACTER, SYMBOLS, AND BACKGROUND SHALL HAVE A EGGSHELL, MATTE, OR OTHER NON-GLARE FINISH.
 - CHARACTERS AND SYMBOLS SHALL HAVE A 70% MINIMUM COLOR WITH THE CHARACTERS AND BACKGROUND.
- MOUNTING LOCATION AND HEIGHT:**
- PERMANENT IDENTIFICATION SIGN SHALL BE INSTALLED ON THE WALL ADJACENT TO THE LATCH SIDE OF THE DOOR.
 - AT SINGLE DOOR: PERMANENT IDENTIFICATION SIGN SHALL BE MOUNTED MAX. 12" FROM DOOR.
 - AT PAIR OF DOORS: PERMANENT IDENTIFICATION SIGN SHALL BE MOUNTED WHERE INTERFERENCE WITH THE DOOR SWING DOES NOT OCCUR, PREFERABLY ON THE RIGHT.
 - AT DOORS WITH NO CLEARANCE ON STRIKE SIDE: PERMANENT IDENTIFICATION SIGN SHALL BE MOUNTED ON THE NEAREST ADJACENT WALL, PREFERABLY ON THE RIGHT.
 - PERMANENT IDENTIFICATION SIGN SHALL BE MOUNTED TO ALLOW FOR A PERSON TO APPROACH WITHIN 3" OF THE SIGNAGE WITHOUT ENCOUNTERING PROTRUDING OBJECTS OR STANDING WITHIN THE SWING OF A DOOR.
 - PERMANENT IDENTIFICATION SIGN SHALL BE MOUNTED 60" FROM THE FINISH FLOOR TO CENTERLINE OF THE SIGN.
 - PROVIDE TACTILE EXIT SIGNS AT ALL EXITS.

WALL MOUNTED ACCESSIBLE ACCESS SIGN (WA)

ALL ACCESSIBLE BUILDING ENTRANCES SHALL HAVE HANDICAPPED SYMBOL ON OR ADJACENT TO DOOR AT STRIKE SIDE

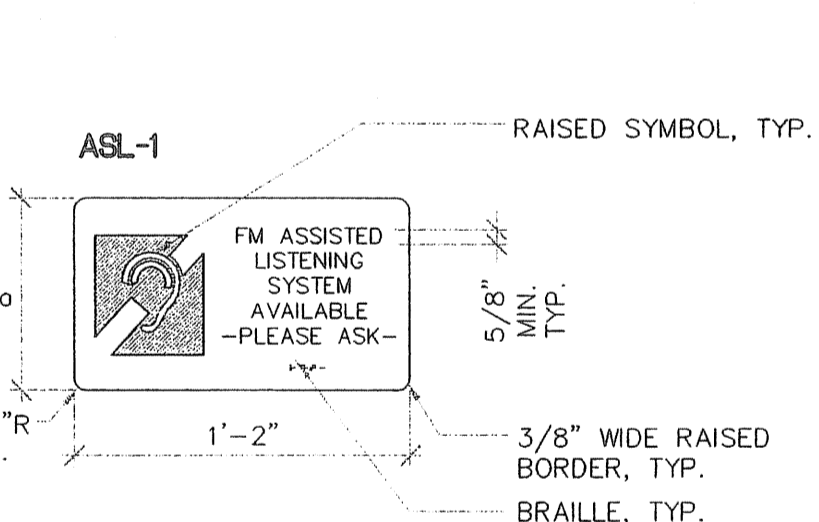


WALL MOUNTED EXIT SIGN (WE)

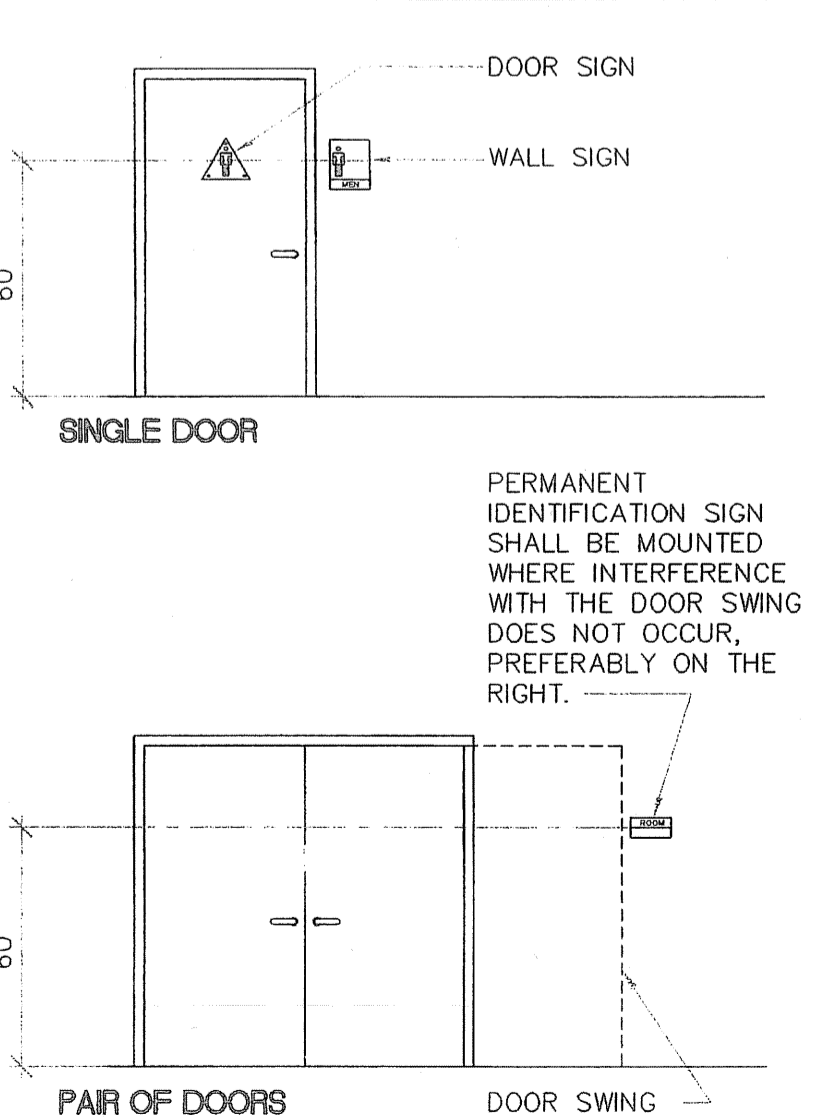
- EXIT DOOR LEADS DIRECTLY TO GRADE LEVEL EXTERIOR EXIT, SIGN TO STATE: "EXIT"
- EXIT DOOR LEADS DIRECTLY TO GRADE LEVEL EXTERIOR EXIT BY MEANS OF RAMP OR STAIR, SIGN TO STATE: "EXIT RAMP DOWN", "EXIT STAIR DOWN", "EXIT RAMP UP", AND "EXIT STAIR UP".
- EXIT DOOR LEADS DIRECTLY TO GRADE LEVEL EXTERIOR EXIT BY MEANS OF AN EXIT ENCLOSURE OR PATHWAY, SIGN TO STATE: "EXIT ROUTE".
- EXIT DOOR FROM AN INTERIOR ROOM, AREA, CORRIDOR OR HALLWAY WHICH IS REQUIRED TO HAVE A VISUAL EXIT SIGN, SIGN TO STATE: "EXIT ROUTE".
- EXIT DOOR THROUGH A HORIZONTAL EXIT, SIGN TO STATE: "TO EXIT".

ASSISTED LISTENING DEVICE (ASL)

1. SEE INTERIOR ELEVATION FOR POSTED LOCATION.

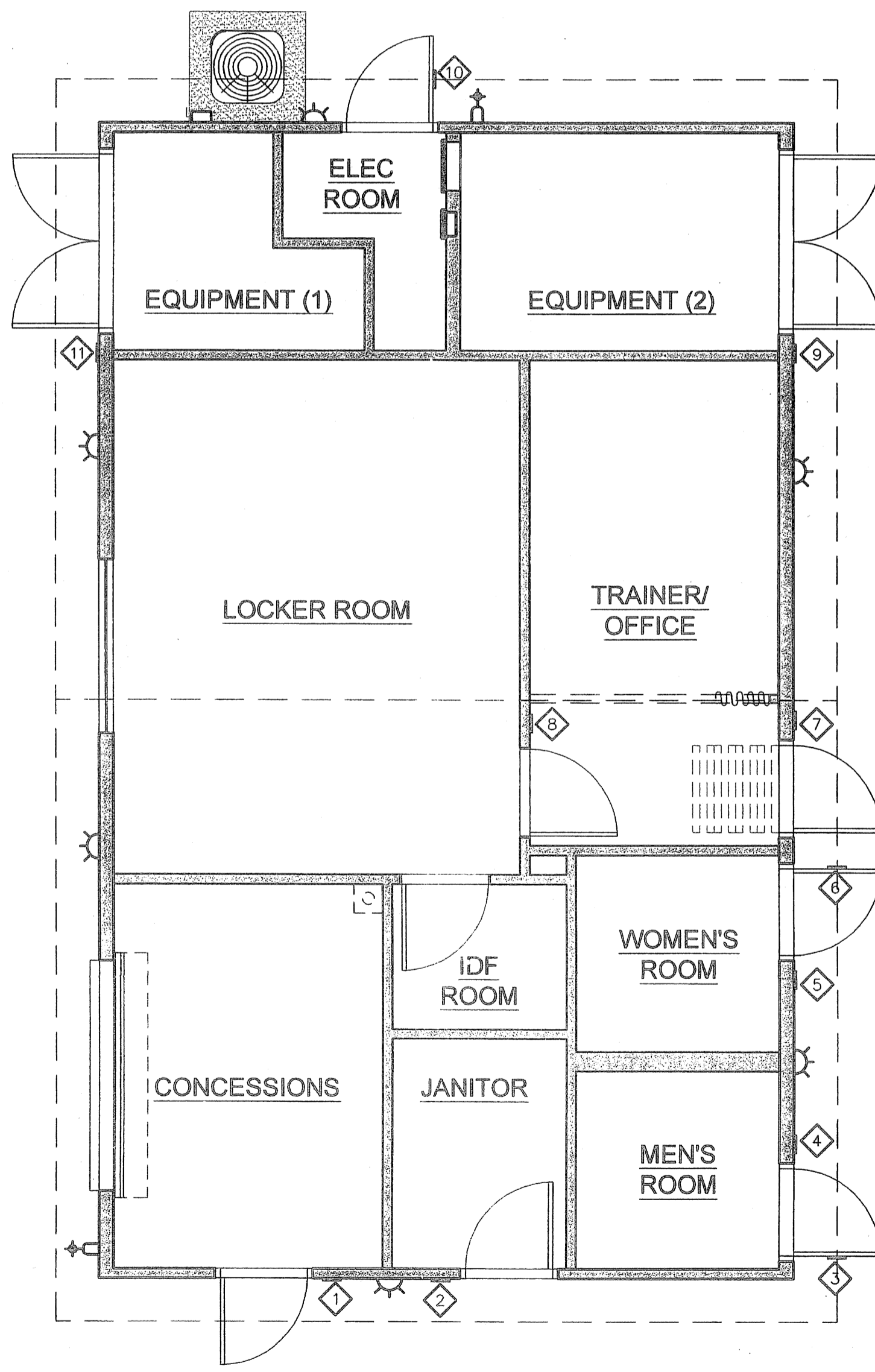


DOOR CLEARANCE



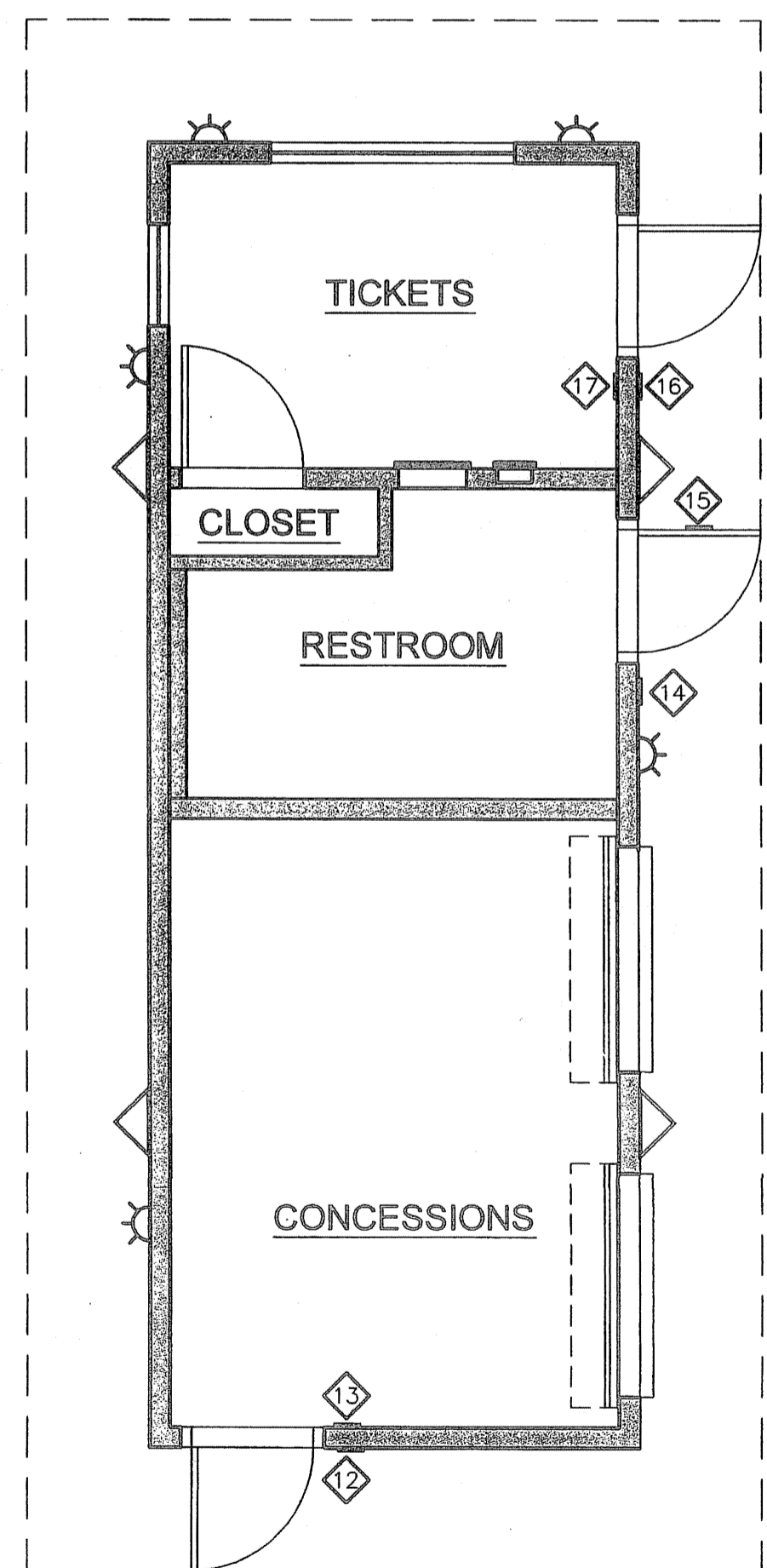
SIGNAGE SCHEDULE			
NO.	SIGN TYPE	ROOM NAME TEXT	ROOM NO. TEXT
1	W-1	CONCESSIONS	-
2	DS-1	JANITOR	-
3	DT-2	-	-
4	WT-4	MEN	-
5	WT-3	WOMEN	-
6	DT-1	-	-
7	W-1	TRAINER / OFFICE	-
8	W-1	LOCKER ROOM	-
9	W-1	EQUIPMENT	-
10	DS-1	ELECTRICAL ROOM	-
11	W-1	EQUIPMENT	-
12	W-1	CONCESSIONS	-
13	WE-1	EXIT	-
14	WT-5	RESTROOM	-
15	DT-3	-	-
16	W-1	TICKETS	-

SIGNAGE SCHEDULE			
NO.	SIGN TYPE	ROOM NAME TEXT	ROOM NO. TEXT
17	WE-1	EXIT	-
18	-	-	-
19	-	-	-
20	-	-	-
21	-	-	-
22	-	-	-
23	-	-	-



TEAM ROOM

BLDG SIGNAGE PLAN
SCALE: 1/4" = 1'-0"



HALL OF FAME

REVISIONS	

COPYRIGHT © 2003 SARAMARK, INCORPORATED
THESE PLAN DRAWINGS ARE PROPRIETARY DOCUMENTS OF SARAMARK, INCORPORATED & ARE NOT TO BE DISTRIBUTED, PUBLISHED OR REPRODUCED WITHOUT THE WRITTEN CONSENT OF SARAMARK INCORPORATED.

EC CONSULTING GROUP
1280 AVIATION AVE
SUITE 200
SAN JOSE, CA 95110
TEL: (408) 294-0315

COLLEGE of SAN MATEO
SAN MATEO UNIFIED SCHOOL DISTRICT

SARAMARK INCORPORATED
SERIES 4000AX
P.O. BOX 24369
SAN JOSE, CALIFORNIA 95154
TEL: (408) 971-3881
FAX: (408) 971-3534

SIGNAGE PLAN



IDENTIFICATION STAMP
DIVISION OF THE STATE ARCHITECT
OFFICE OF REGULATION SERVICES
01-108848
AC: FLS: SS: [Signature]
DATE: OCT 10 2007

DRAWN: LE
DATE: 4.11.07
CHECKED: FAV
SCALE: 1/4" = 1'-0"
PROJECT: 1615

C-1.1