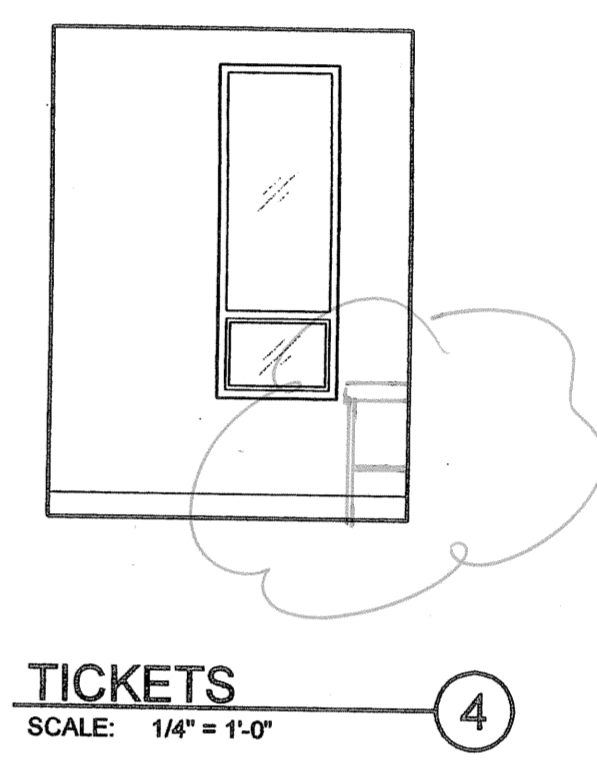
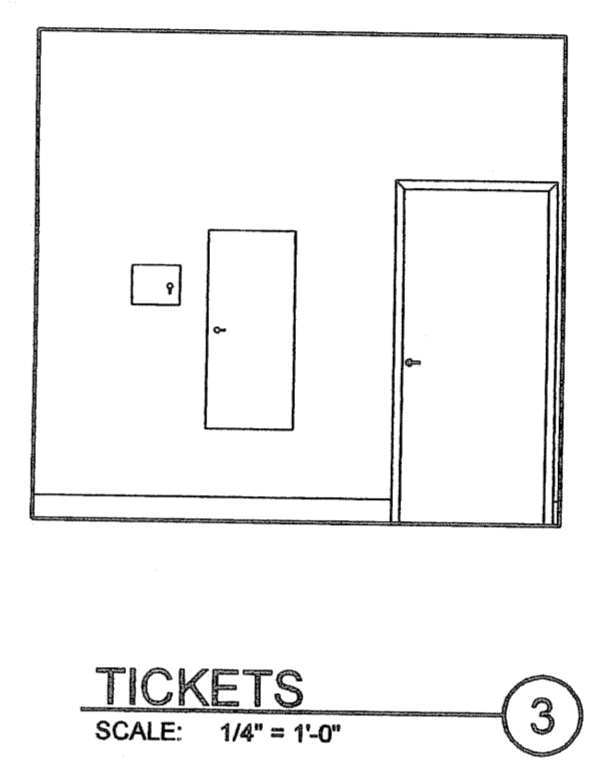
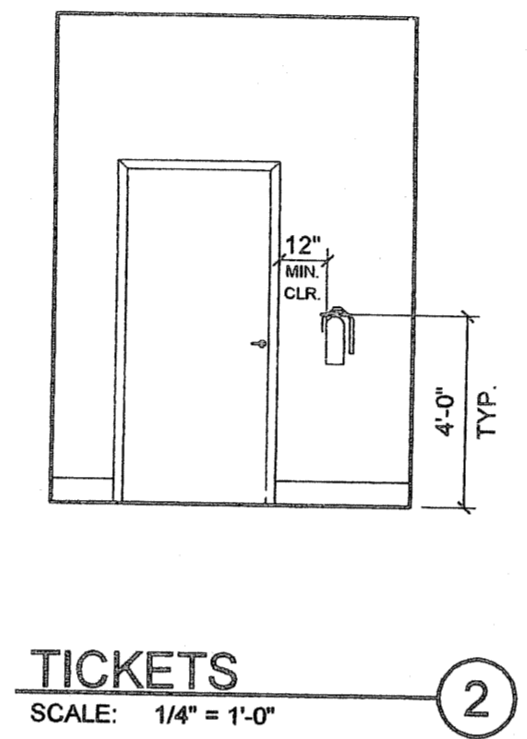
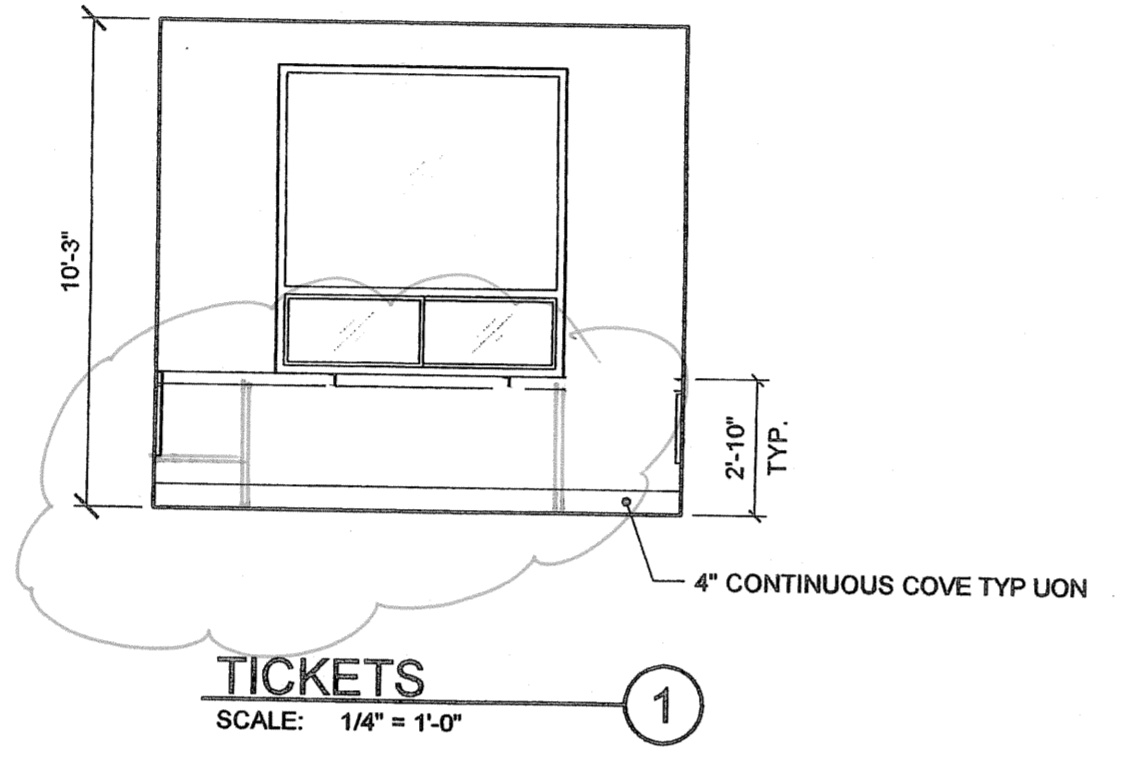
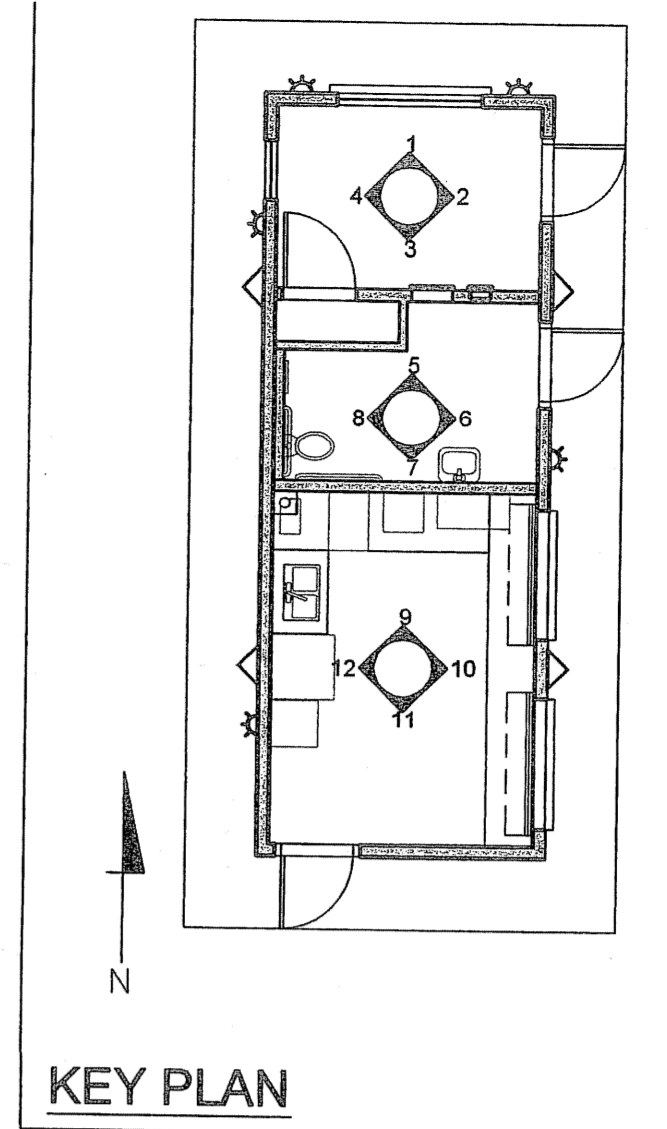
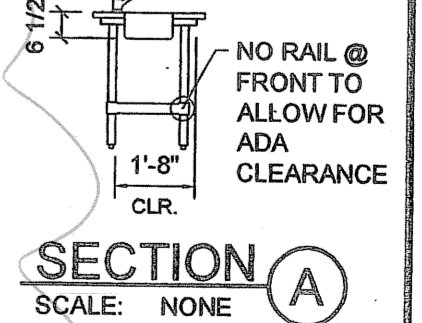
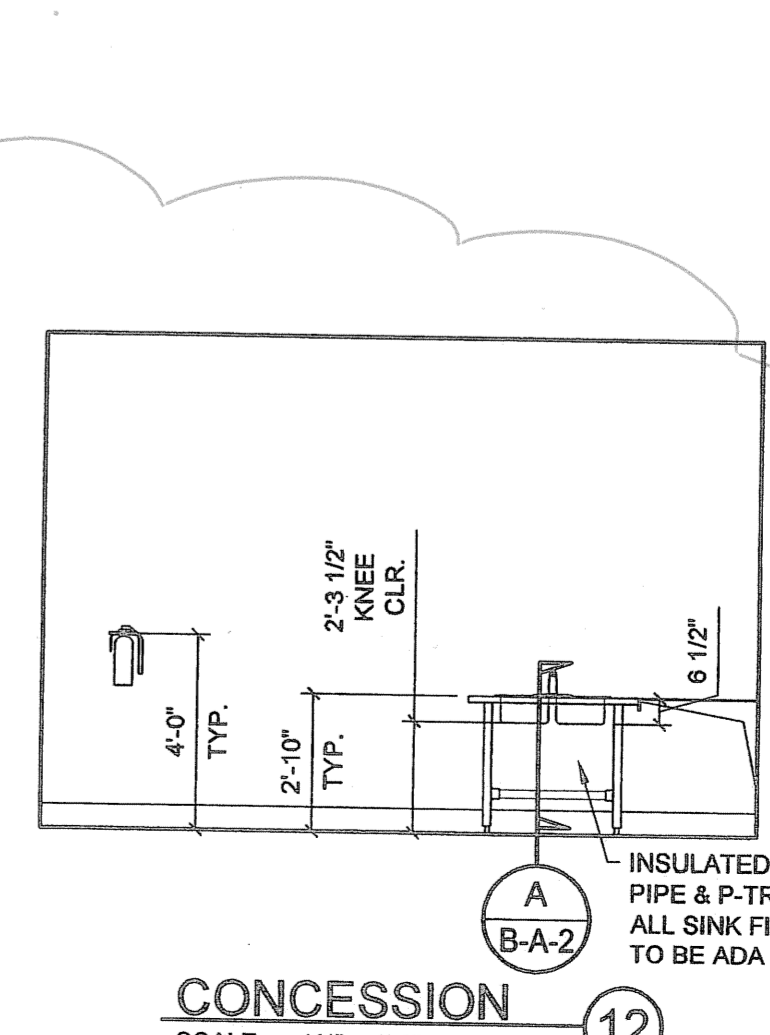
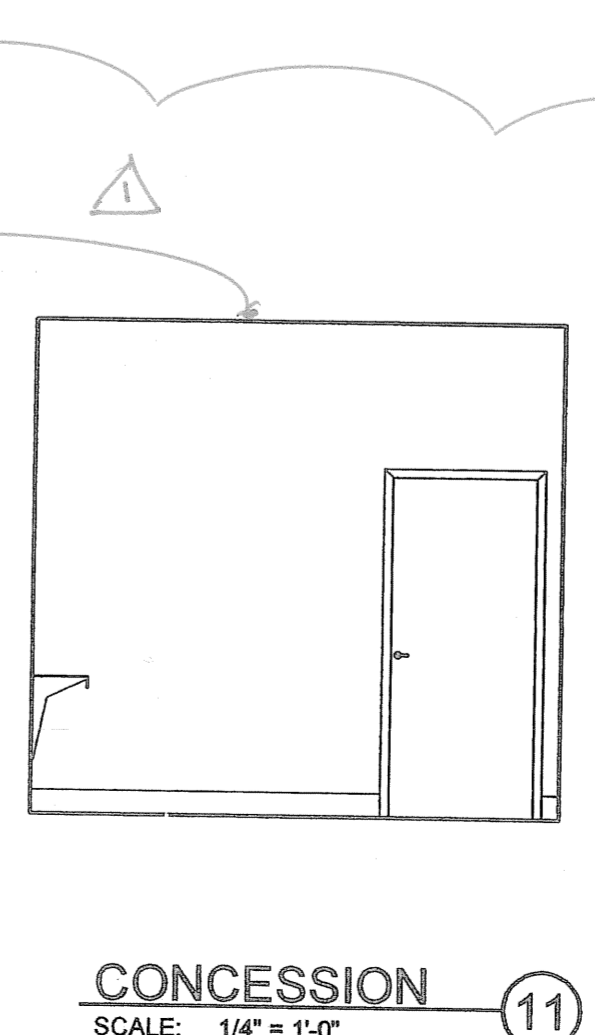
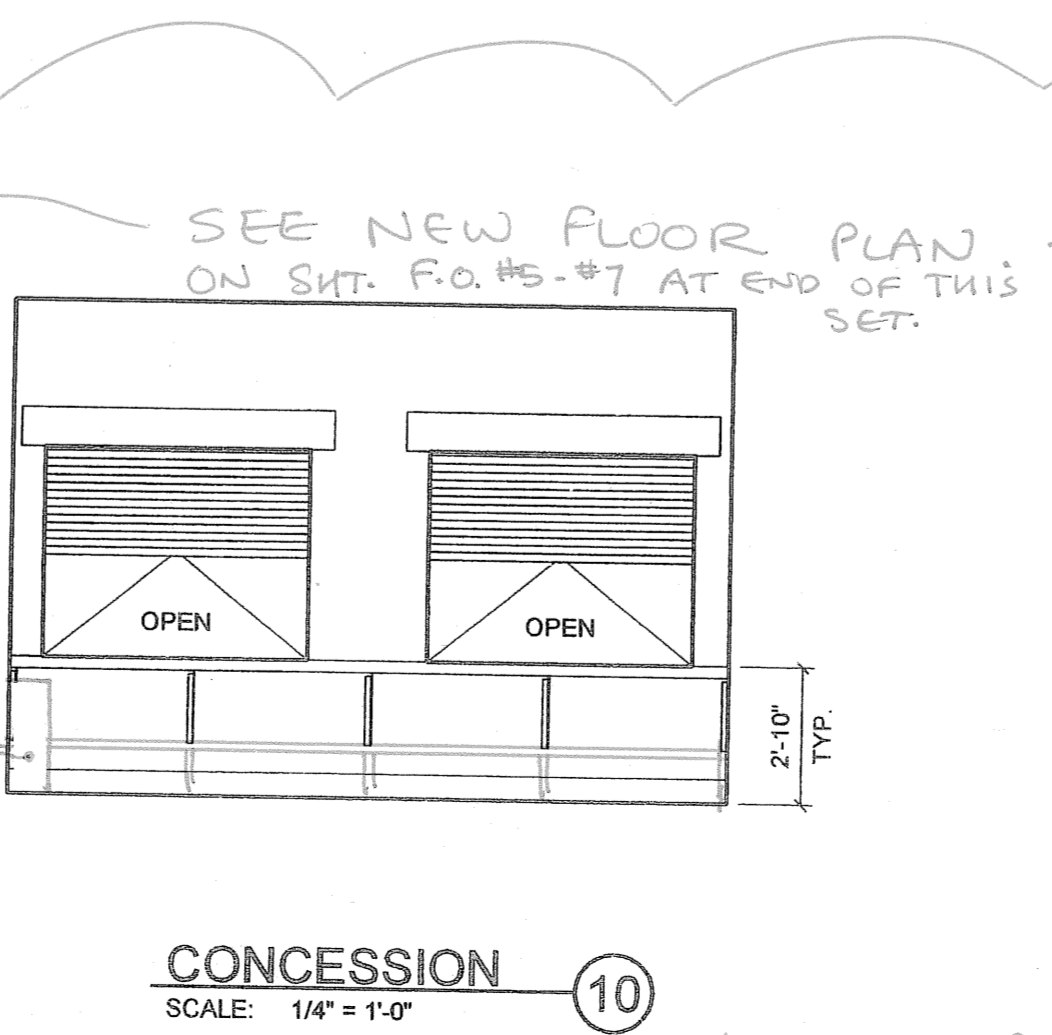
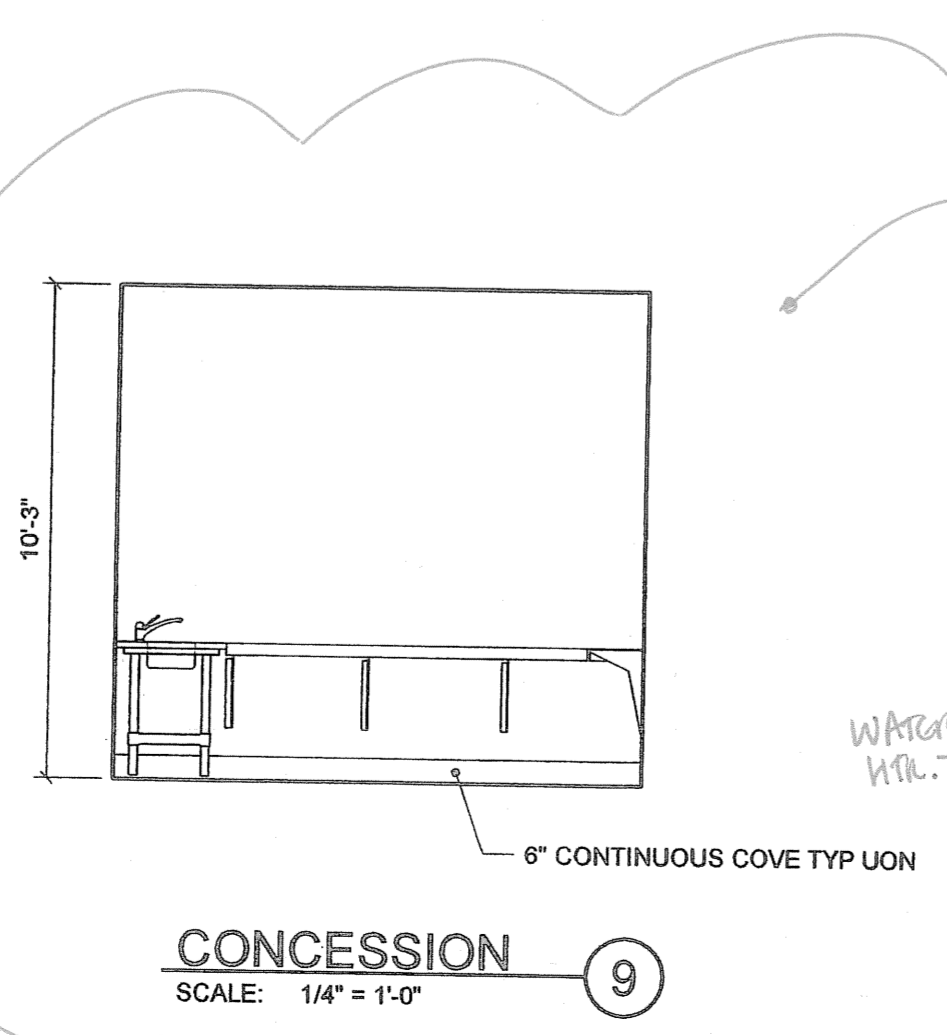
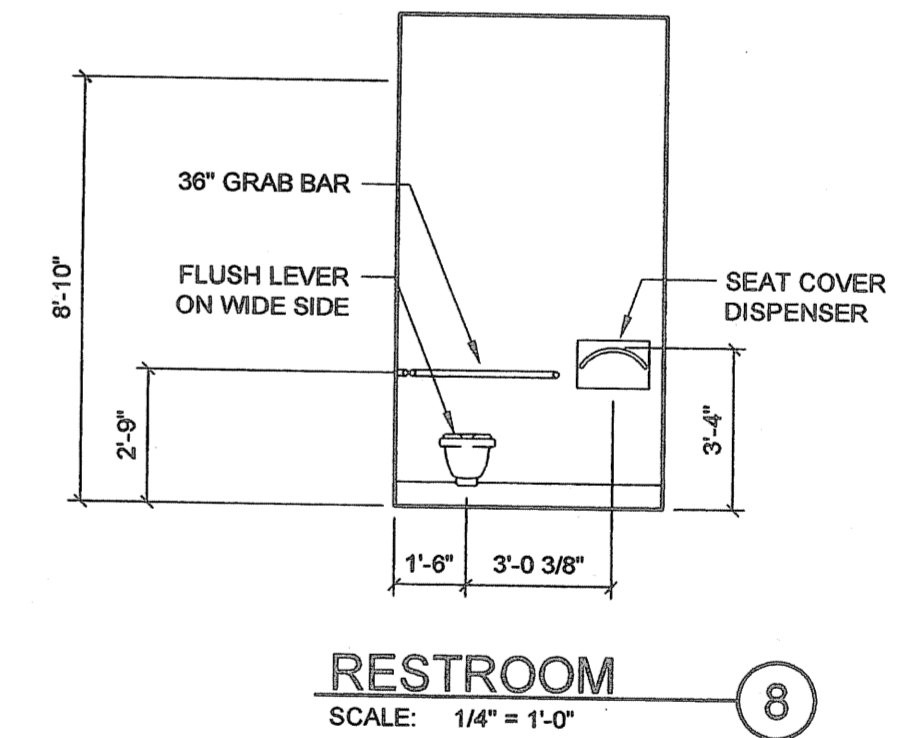
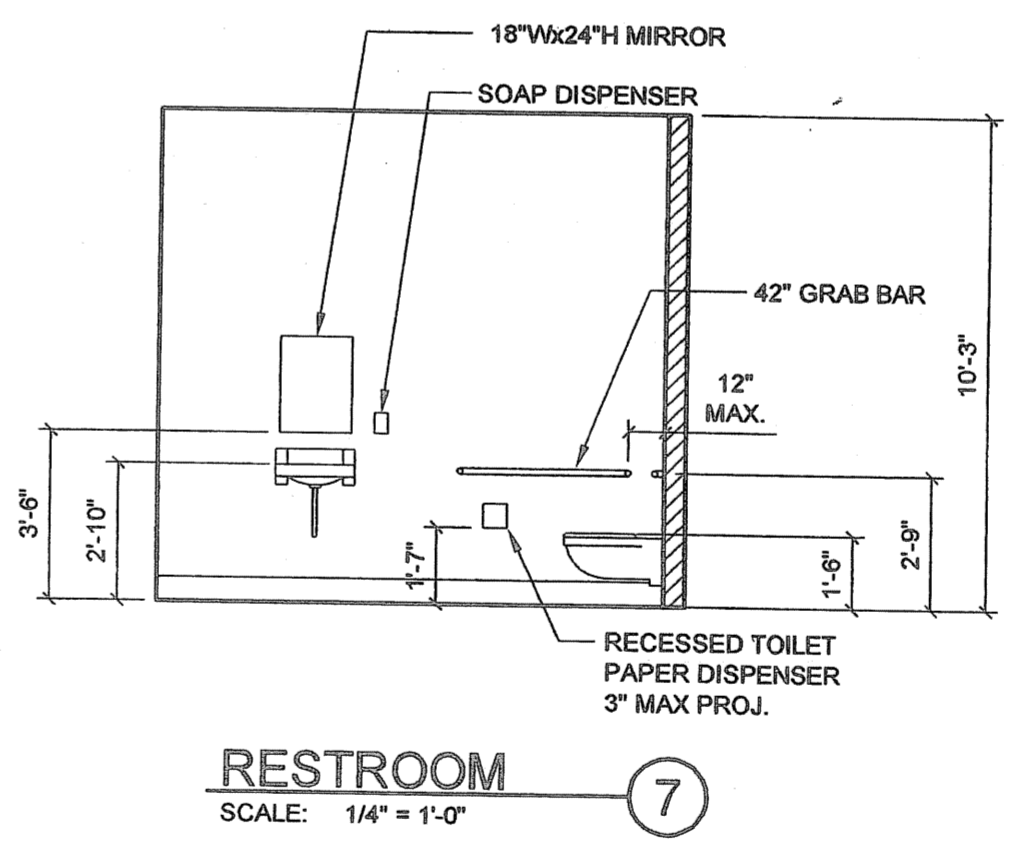
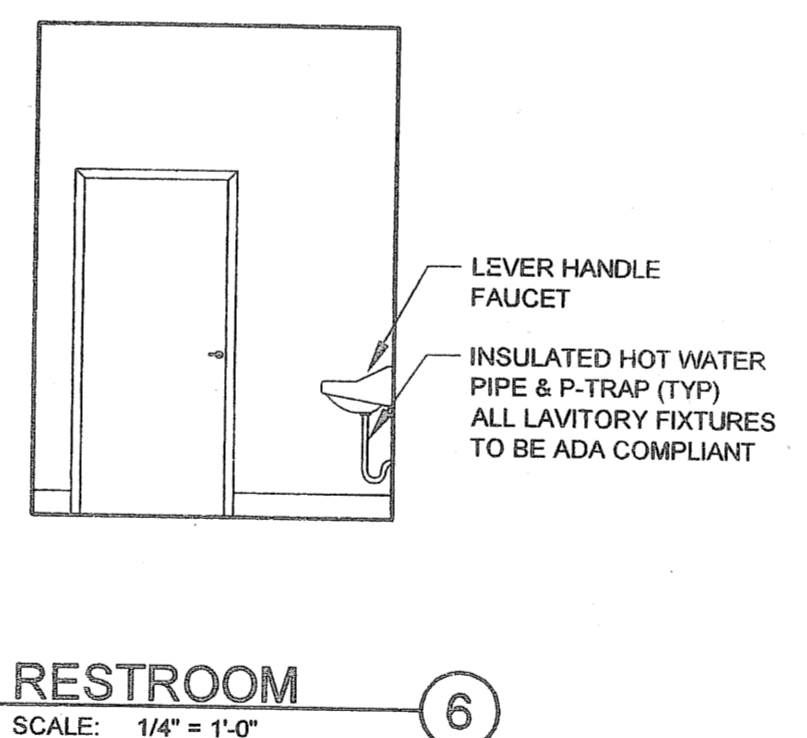
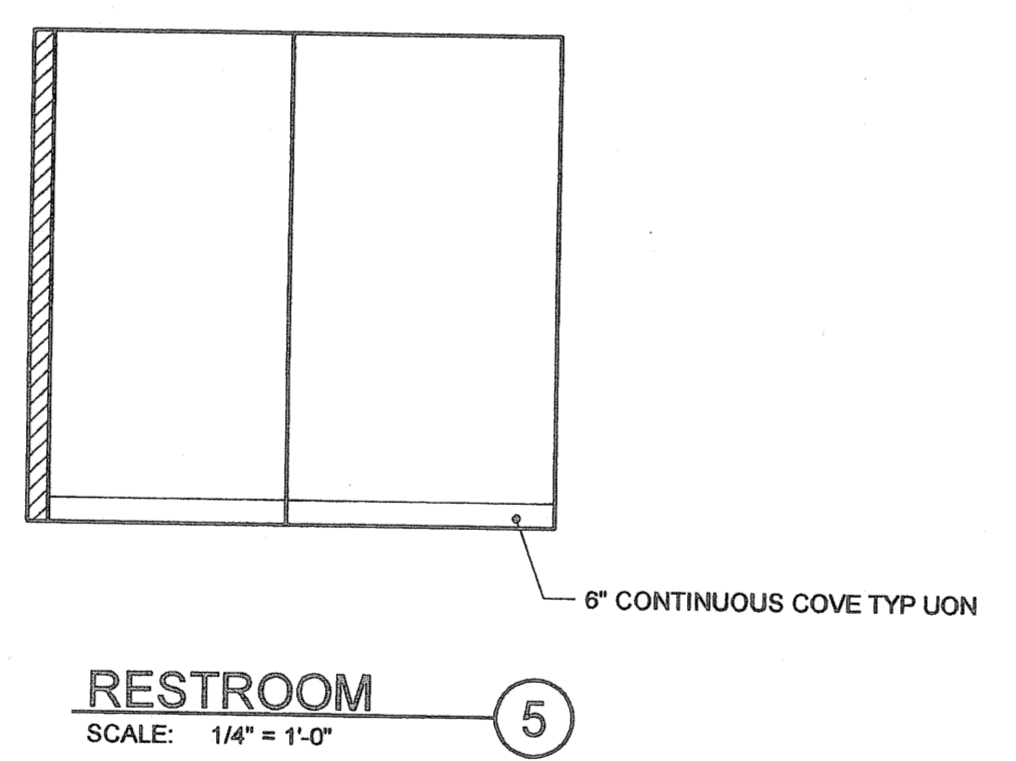


NOTE:  
 DETAILS FOUND ON SHEETS A-8 & S-8  
 ARE STANDARD SARMARK  
 CONSTRUCTION DETAILS & ARE USED  
 FOR THIS SITE SPECIFIC BLDG.



**BUILDING B - REFLECTED CEILING PLAN - HALL OF FAME**  
 SCALE: 1/4" = 1'-0"



- LEGEND**
- 13" ROUND WALL MOUNTED EXTERIOR FLOURESCENT LIGHT MOUNTED @ 92" TO CENTER A.F.F. MOUNTING DETAILS PER MANUFACTURER'S RECOMMENDATION
  - 2x4' FLOURESCENT LAY-IN LIGHT FIXTURE. MOUNTING DETAIL SEE 5 S-8
  - BROAN 8" CEILING EXHAUST FAN, DUCT VTR. SWITCHED W/ LIGHTS.

- GENERAL NOTES:**
- ALL TOILET PAPER DISPENSERS TO COMPLY WITH 1115B.9.2 & 1115B.9.3
  - REFERENCE SHEET A-00 TO BUILDING B.

**REVISIONS**

|   |  |  |
|---|--|--|
| 1 |  |  |
| 2 |  |  |
| 3 |  |  |
| 4 |  |  |
| 5 |  |  |
| 6 |  |  |

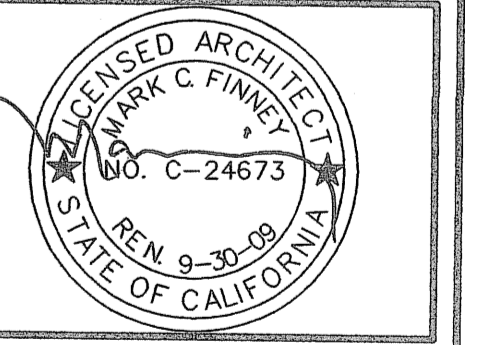
COPYRIGHT © 2003 SARMARK, INCORPORATED  
 THESE PLAN DRAWINGS ARE PROPRIETARY DOCUMENTS OF SARMARK, INCORPORATED & ARE NOT TO BE DISTRIBUTED, PUBLISHED OR REPRODUCED WITHOUT THE WRITTEN CONSENT OF SARMARK INCORPORATED.

**EC CONSULTING GROUP**  
 1250 AVIATION AVE  
 SUITE 200-F  
 SAN JOSE, CA 95110  
 TEL: (408) 284-9510

**COLLEGE of SAN MATEO**  
 SAN MATEO UNIFIED SCHOOL DISTRICT

**SARMARK INCORPORATED SERIES**  
 P.O. BOX 24389  
 SAN JOSE, CALIFORNIA 95154  
 TEL: (408) 971-3651  
 FAX: (408) 971-3534

**BUILDING B REFLECTED CEILING PLAN & INT. ELEV. HALL OF FAME**



IDENTIFICATION STAMP  
 DIV. OF THE STATE ARCHITECT  
 OFFICE OF REGULATION SERVICES  
 01-108848  
 AC. 7c FLS. 6 SS. 11  
 DATE JUL 1 10 2007

DRAWN: [Signature]  
 DATE: 4.11.07  
 CHECKED: FAV  
 SCALE: AS SHOWN  
 PROJECT: 1615

**B-A-2**