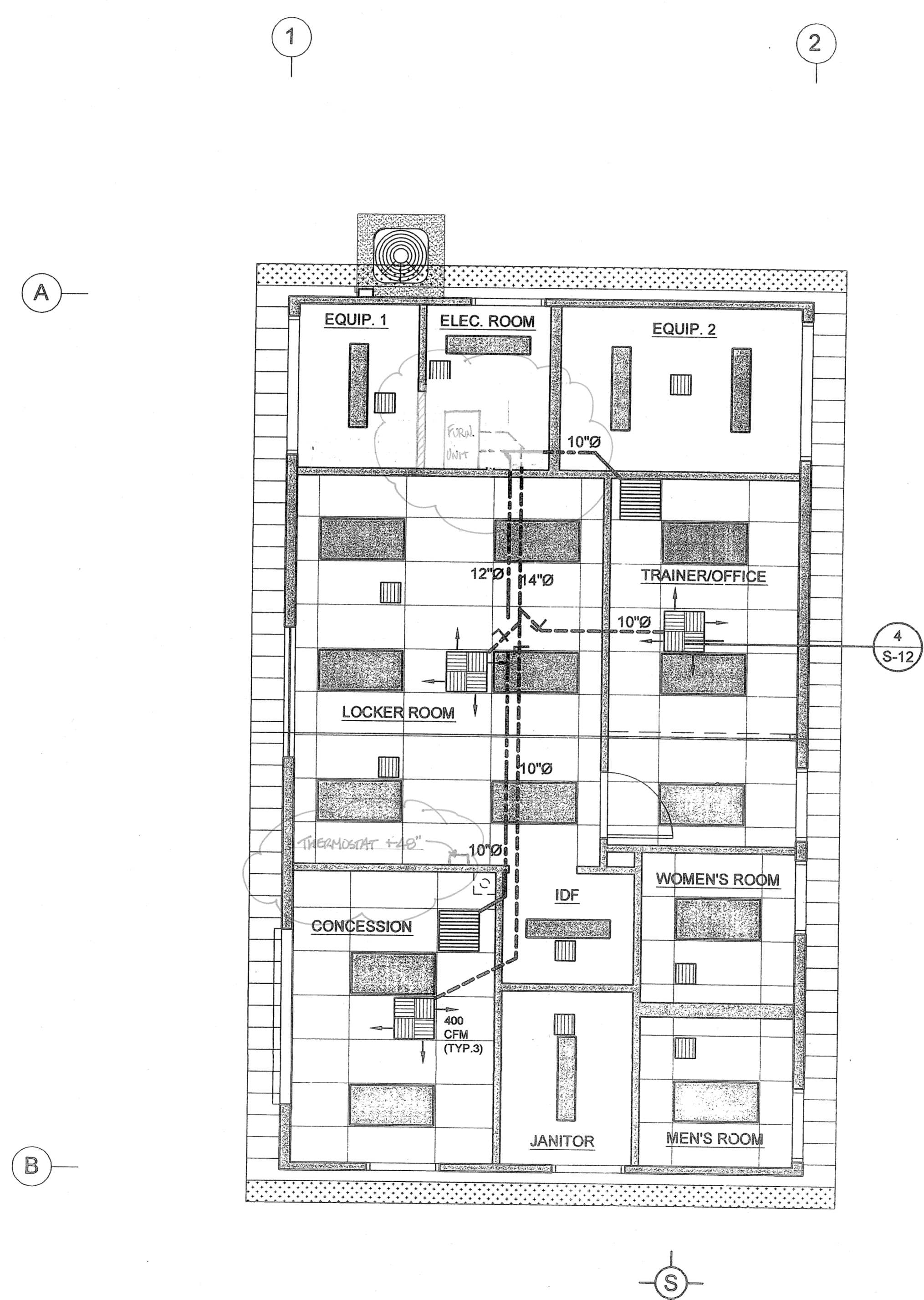


drawings\PROJECTS\OPEN PROJECTS\San Mateo Community College\Drawing Set\A-M-1.dwg, 10/9/2007 3:24:56 PM, 6050 - Borrd-24.pcd

HVAC EQUIPMENT SCHEDULE														
MARK	MFR.	MODEL NO.	CFM	EXTERNAL STATIC IN. WG	BLOWER H.P.	COOLING			HEATING		ELECTRICAL		REMARKS	
						TOTAL BTUH	SENSIBLE BTUH	EAT DB / WB	AMB. °F	BTUH INPUT/BASE	BTUH OUTPUT/TOTAL	VOLTPHWHZ		MCAMMCP
XX	LENNOX	HS29-036-Y	---	---	---	35,700	26,500	---	80	---	---	208/3Ø	1420	---
AC X	FAU	G40UH-36B-070	1200	0.60"	5.0	---	---	---	---	66,000	52,800	120/1Ø	1215	600
	COIL	C33-36B-2F	---	---	---	---	---	---	---	---	---	---	---	---

FURNISH AND INSTALL ALL REFRIGERATION SAFETY & RELIEF DEVICES & LINES AS REQUIRED.

NOTES:
 1) PROVIDE THERMOSTAT WITH CLEAR LOCKING GAUARD. REFER TO TEMPERATURE CONTROL SPECIFICATION. 48" MAX A.F.F. MOUNTING HEIGHT
 2) SET MINIMUM FRESH AIR AS SPECIFIED ABOVE.
 3) REFERENCE SPECIFICATIONS FOR ADDITIONAL INFORMATION.
 4) FURNISH AND INSTALL A LINE MOUNTED DISCONNECT SWITCH FOR ALL NEW UNITS.
 5) FOLLOW MANUFACTURERS INSTRUCTIONS FOR STARTUP AND INSTALLATION.
 6) FOR HORIZONTAL FURNACE INSTALLATIONS FURNISH TYPE "CH" COILS.



MECHANICAL PLAN
SCALE: 1/4" = 1'-0"

- LEGEND:**
- 2x4 FLUORESCENT LAY-IN LIGHT FIXTURE. MOUNTING DETAIL SEE 5 S-11
 - 2'-0" x 2'-0" SUPPLY AIR REGISTER WITH 4-WAY DIFFUSER (SHOEMAKER). MOUNTING DETAIL SEE 4 S-12
 - 2'-0" x 2'-0" COLD AIR RETURN WITH FLAT GRILLE (SHOEMAKER). MOUNTING DETAIL PROVIDED IN PROJECT SUBMITTAL
 - SUPPLY DUCT W/ SIZE
 - RETURN DUCT W/ SIZE
 - BROAN MODEL L-200 8" CEILING EXHAUST FAN, DUCT VTR, SWITCHED W/ LIGHTS.
 - VOLUME DAMPER

- NOTES:**
- AIR FILTERS SHALL BE A STATE FIRE MARSHAL APPROVED AND LISTED TYPE PREFORMED FILTERS HAVING COMBUSTIBLE FRAMING SHALL BE TESTED AS A COMPLETE ASSEMBLY. AIR FILTERS IN ALL OCCUPANCIES SHALL BE CLASS 1 OR 2 (AS SHOWN IN THE STATE FIRE MARSHAL LISTING). AIR FILTERS SHALL BE ACCESSIBLE FOR CLEANING OR REPLACEMENT. (402.3 CMC)
 - INSULATION APPLIED TO THE EXTERIOR SURFACE OF DUCTS SHALL HAVE A FLAME-SPREAD RATING OF NOT MORE THAN 25 AND A SMOKE-DENSITY RATING OF NOT MORE THAN 50 WHEN TESTED AS A COMPOSITE ASSEMBLY INCLUDING INSULATION, FACING MATERIALS, TAPES AND ADHESIVES AS NORMALLY APPLIED (SEC. 604.3. CMC)

REVISIONS	
1	
2	
3	
4	
5	
6	

COPYRIGHT © 2003
SARAMARK, INCORPORATED
THESE PLAN DRAWINGS ARE PROPRIETARY DOCUMENTS OF SARAMARK, INCORPORATED & ARE NOT TO BE DISTRIBUTED, PUBLISHED OR REPRODUCED WITHOUT THE WRITTEN CONSENT OF SARAMARK INCORPORATED.

EC CONSULTING GROUP

1280 AVIATION AVE
SUITE 200-F
SAN JOSE, CA 95110
TEL: (408) 294-8818

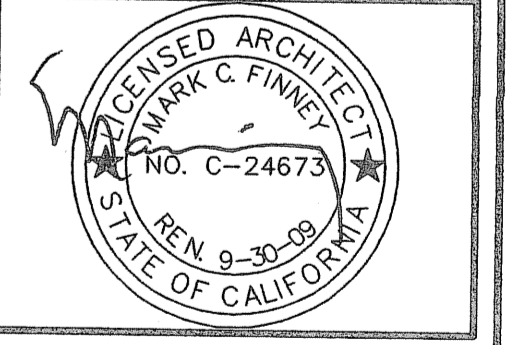
COLLEGE of SAN MATEO

SAN MATEO UNIFIED SCHOOL DISTRICT

SARAMARK INCORPORATED
SERIES 4024AX
PC 01-105106

P.O. BOX 24368
SAN JOSE, CALIFORNIA 95124
TEL: (408) 971-3881
FAX: (408) 971-3534

BUILDING A TEAM ROOM MECHANICAL PLAN



IDENTIFICATION STAMP
DIV. OF THE STATE ARCHITECT
OFFICE OF REGULATION SERVICES
01-108848
AC AC FLS SS
DATE OCT 10 2007

DRAWN: 4.11.07
CHECKED: FAV JCWC 4-10-07
SCALE: AS SHOWN
PROJECT: 1615

A-M-1