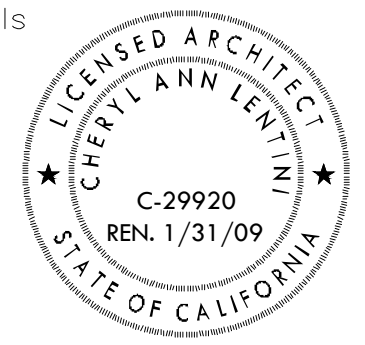


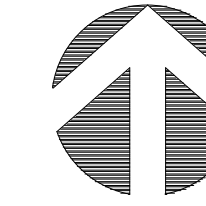
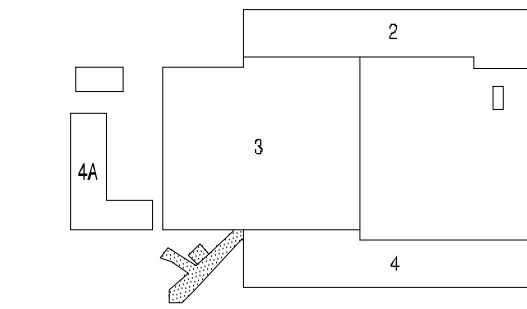
**BEVERLY  
PRIOR**  
*architects*

222 SUTTER STREET, 9TH FLOOR  
SAN FRANCISCO, CALIFORNIA 94108  
phone 415.777.9422 fax 415.777.2755 24/7 [bparch.com](http://bparch.com)  
architect/engineer seals



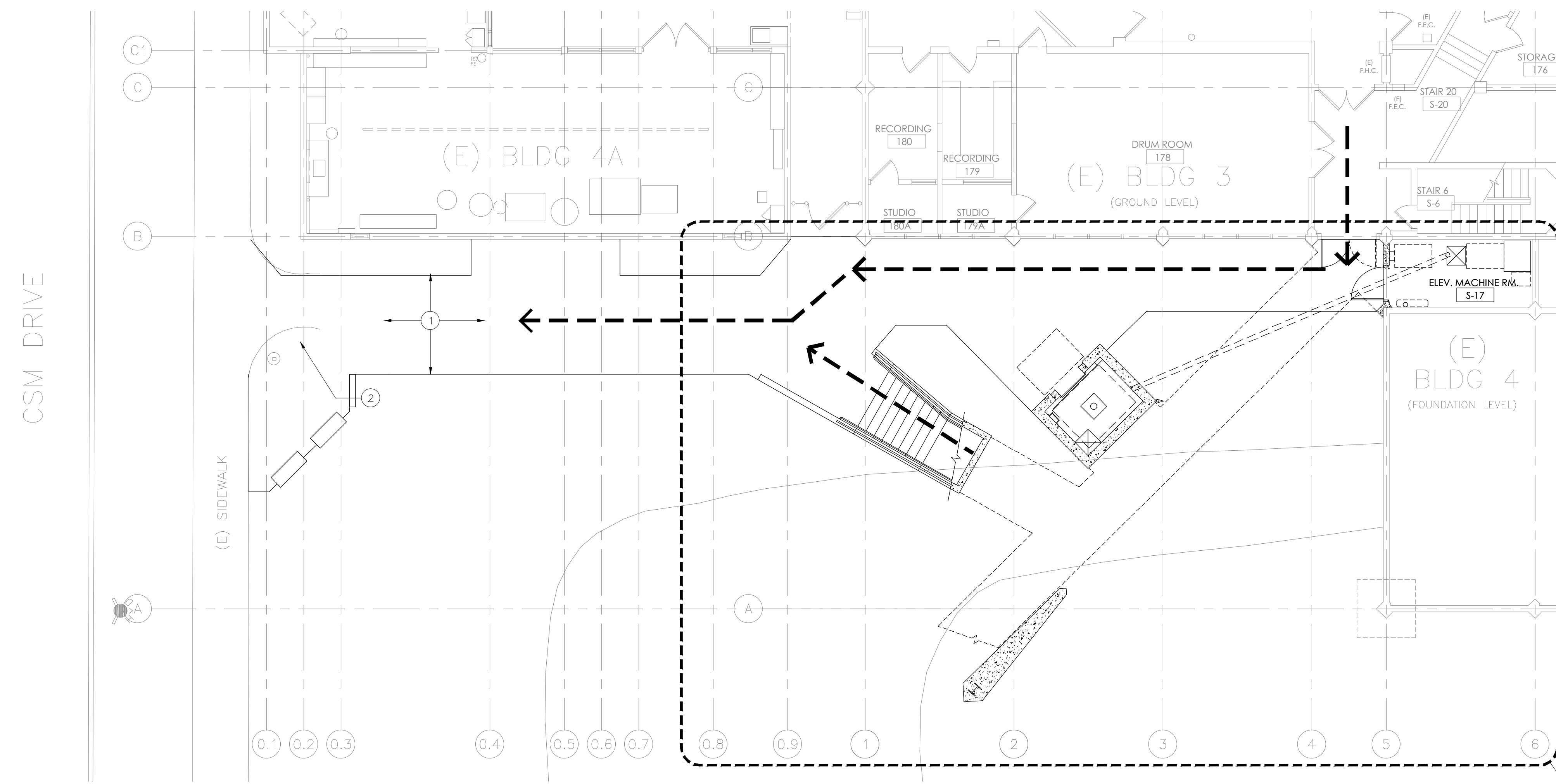
consultant

- ① CONCRETE UNIT PAVEMENT WALK, TYP. - SEE CIVIL DWG.'S
  - ② CONNECTION TO SIDEWALK IN INCREMENT 1
- > EGRESS PATH OF TRAVEL



**C3** SHEET NOTES

**C4** KEY PLAN



project title  
**SMCCCD  
COLLEGE OF SAN MATEO  
FINE ARTS COMPLEX  
BUILDINGS 2 & 4  
RENOVATIONS  
INCREMENT 2**

344 CSM DRIVE  
SAN MATEO, CA 94402

agency/approvals  
IDENTIFICATION STAMP  
DIVISION OF THE STATE  
ARCHITECT

APPL. No. 01 - 109243

AC \_\_\_\_\_ FLS \_\_\_\_\_ SS \_\_\_\_\_  
DATE \_\_\_\_\_

date	description
03.13.2008	PRICING SET
05.08.2008	DSA SUBMITTAL
10.14.2008	DSA BACKCHECK
10.26.2008	AS BUILT

sheet title  
**EXTERIOR  
GROUND FLOOR  
PLAN**

project no. 2707.01

sheet no.

**A-135**

© Beverly Prior Architects, Inc., 2007 | All Rights Reserved

**A1** 1/8" = 1'-0"  
ELEVATOR - GROUND FLOOR PLAN