



JEFF SULTAN, P.E.  
ELECTRICAL ENGINEER  
2081 Camino de los Robles  
Menlo Park, CA 94025  
(650) 854-7585  
jeff@mspower.net

**RECORD DRAWING**  
RECORD DRAWING IS BASED ON INFORMATION PROVIDED BY THE CONTRACTORS. THAT MAY NOT HAVE BEEN VERIFIED IN THE FIELD BY THE ENGINEER.

CALIFORNIA STATE FIRE MARSHAL  
APPROVED  
APPROVAL OF THIS PLAN DOES NOT AUTHORIZE OR APPROVE ANY OMISSION OR DEVIATION FROM APPLICABLE REGULATIONS. FINAL APPROVAL SUBJECT TO FIELD INSPECTION. ONE SET OF APPROVED PLANS SHALL BE AVAILABLE ON THE PROJECT SITE AT ALL TIMES.  
REVIEWED BY: \_\_\_\_\_ DATE: \_\_\_\_\_

**CSM NORTH GATEWAY**  
**LOAD CENTER & SITE WALL**  
1700 West Hillsdale Blvd  
San Mateo, CA 94402

REGISTERED ARCHITECT  
CHRISTOPHER NOLL  
REN. 12/31/09  
No. C15916  
STATE OF CALIFORNIA

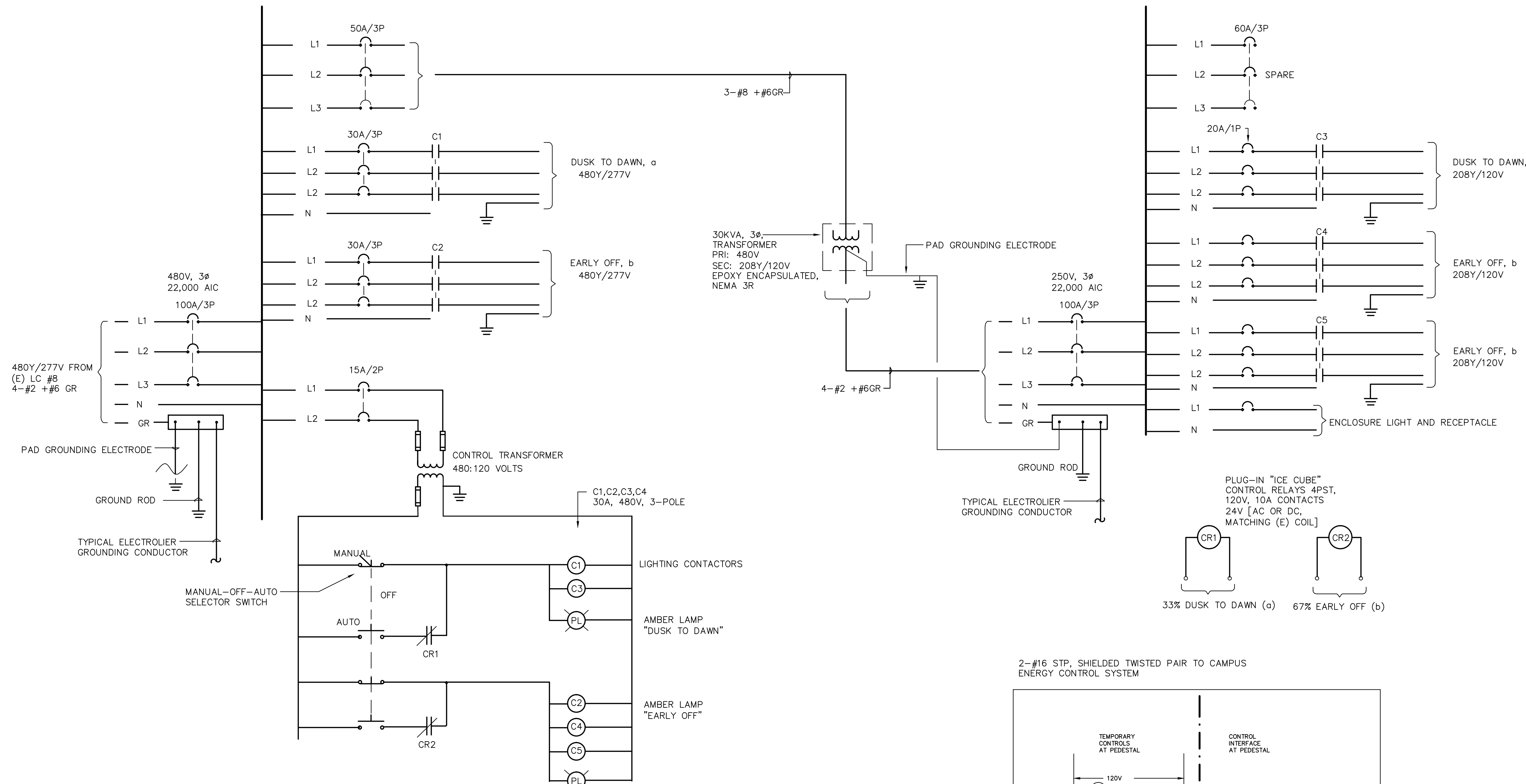
**PROJECT RECORD DOCUMENT**

SHEET TITLE  
**ELECTRICAL DETAILS**

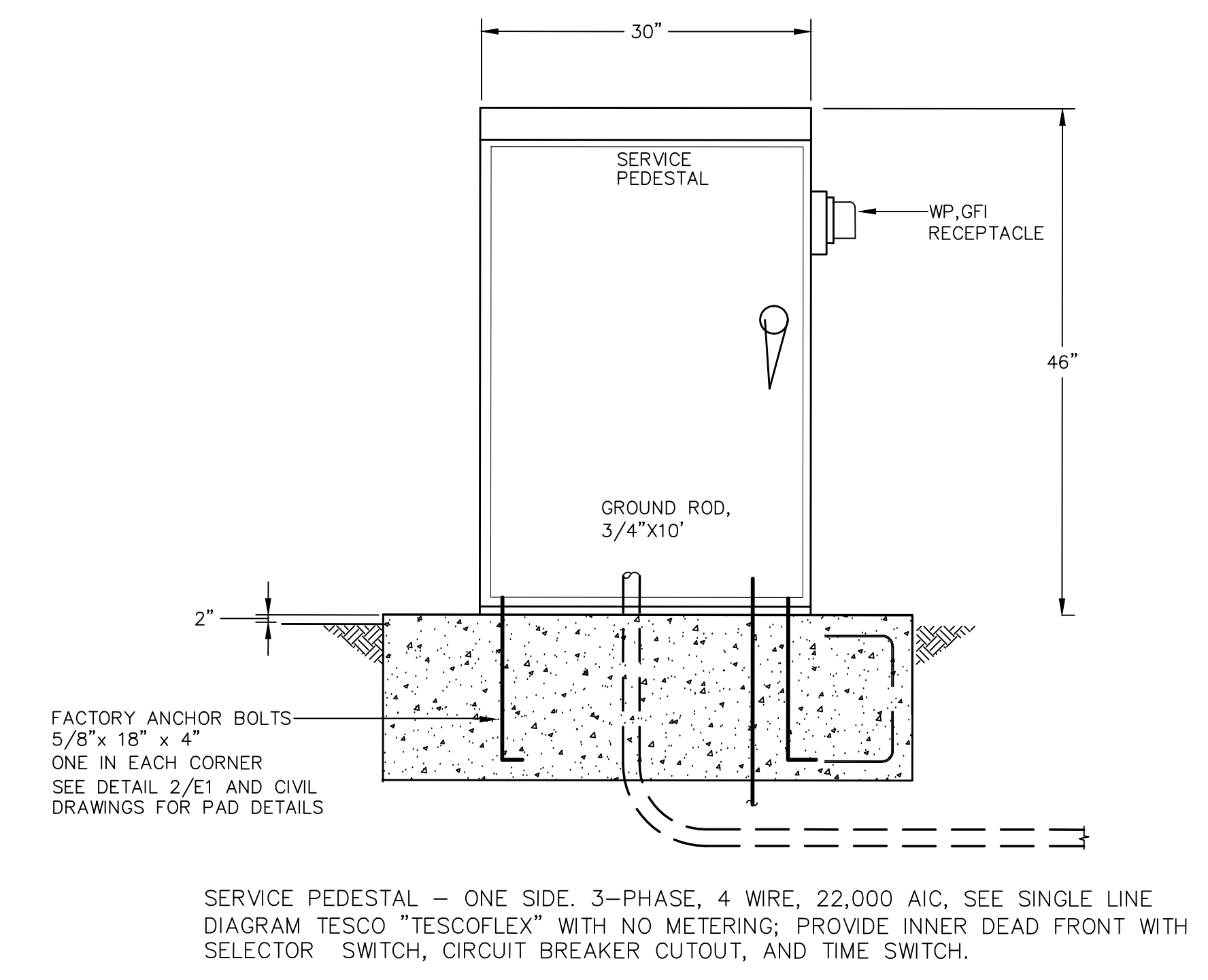
REVISIONS		
NO.	DATE	DESCRIPTION

DATE: FEBRUARY 24, 2012  
DRAWN: JS  
CHECKED: —  
SCALE: AS NOTED  
JOB NO.: 2805

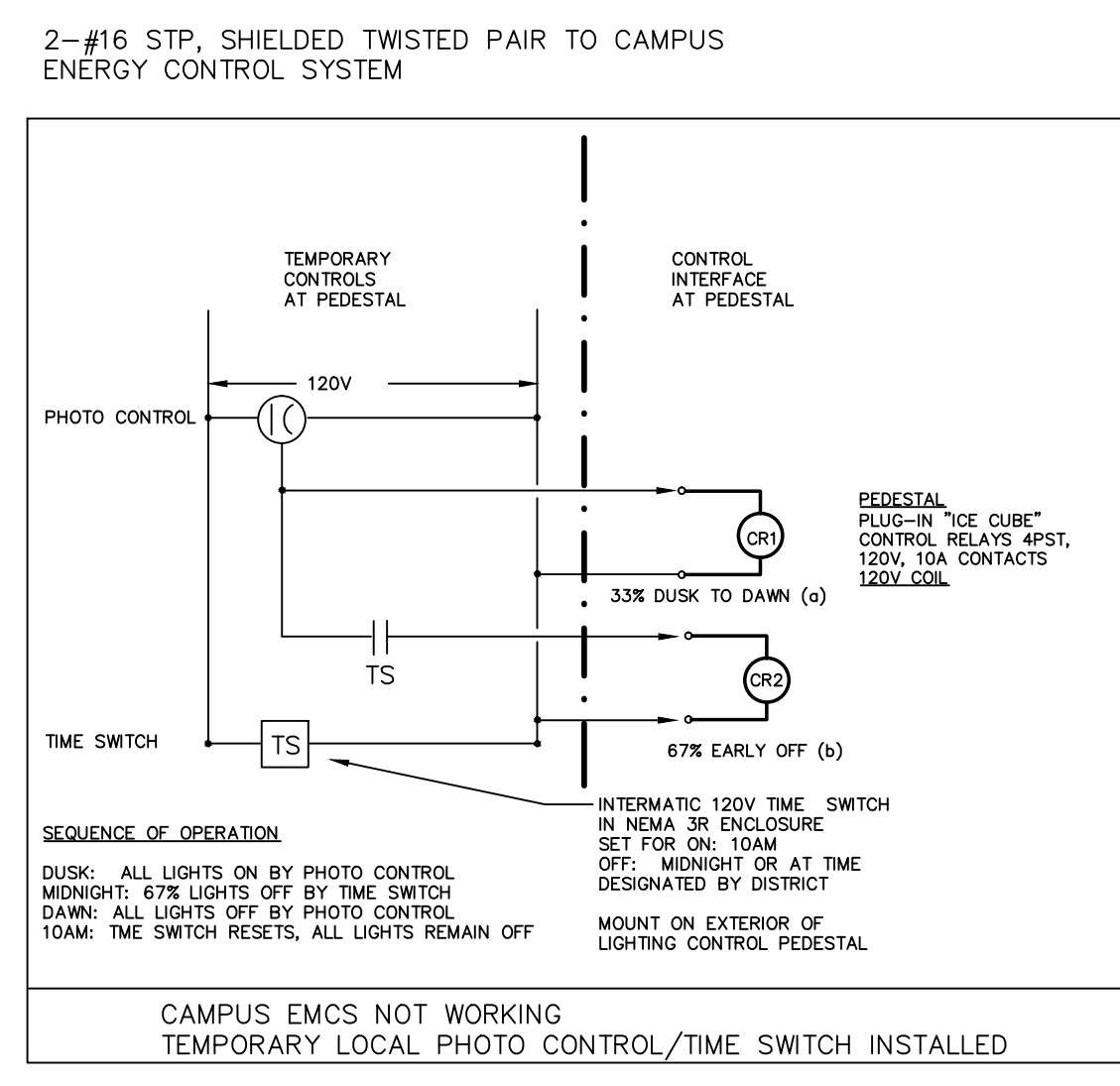
SHEET NUMBER  
**E2**



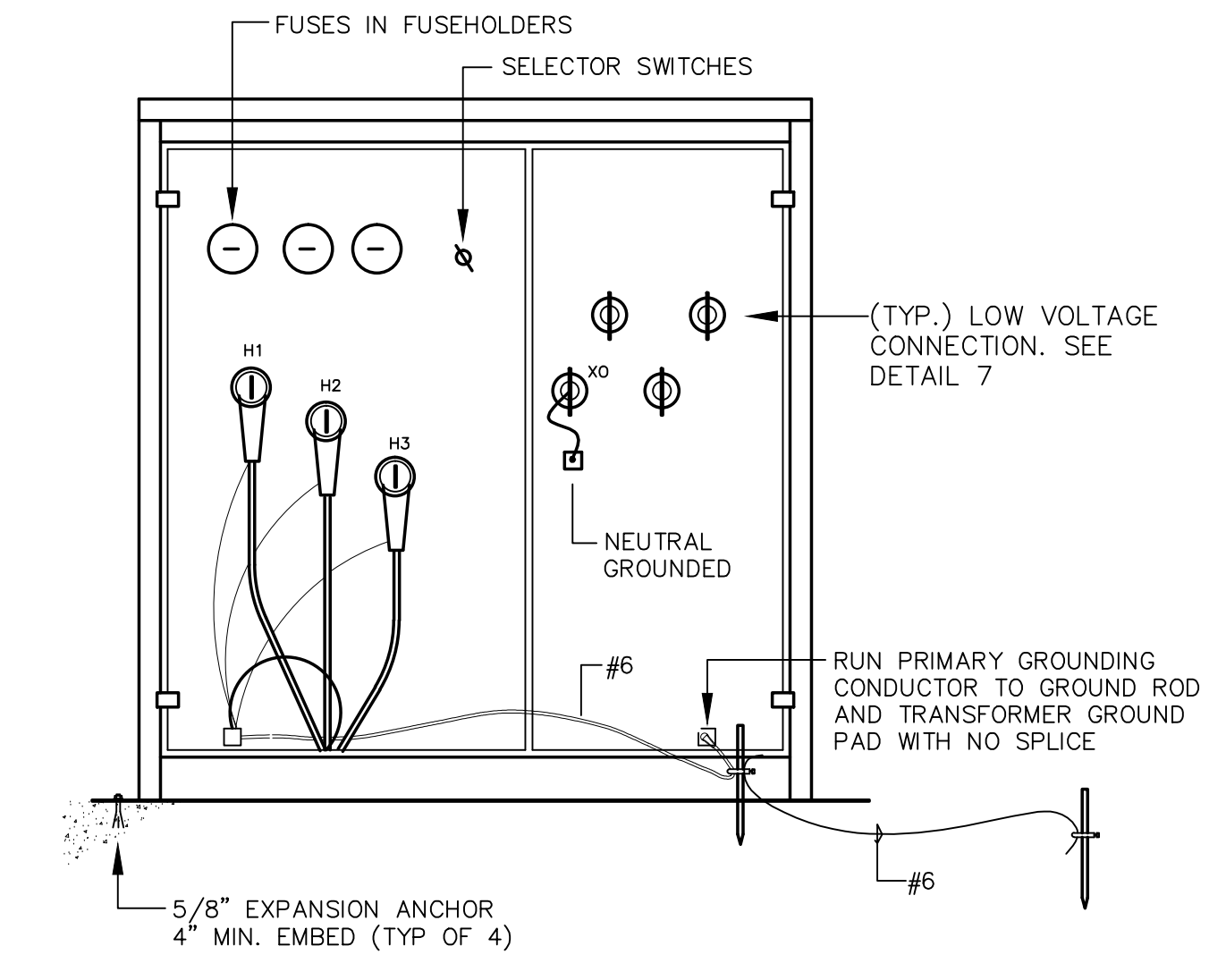
**1 OUTDOOR LIGHTING CONTROL SCHEMATIC**  
N.T.S.



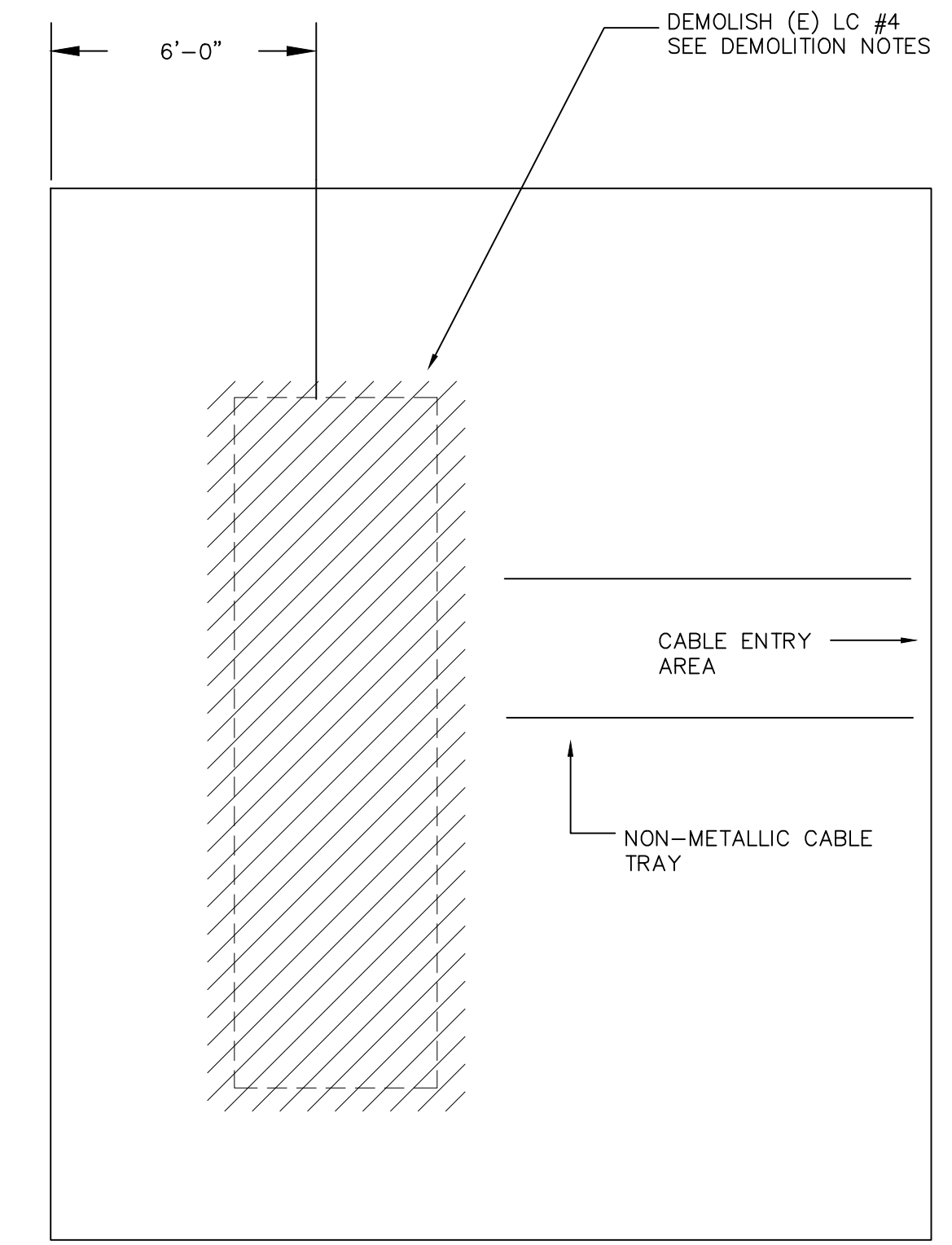
**2 OUTDOOR LIGHTING CONTROL PEDESTAL**  
N.T.S.



**3 ENERGY CONTROL SYSTEM**

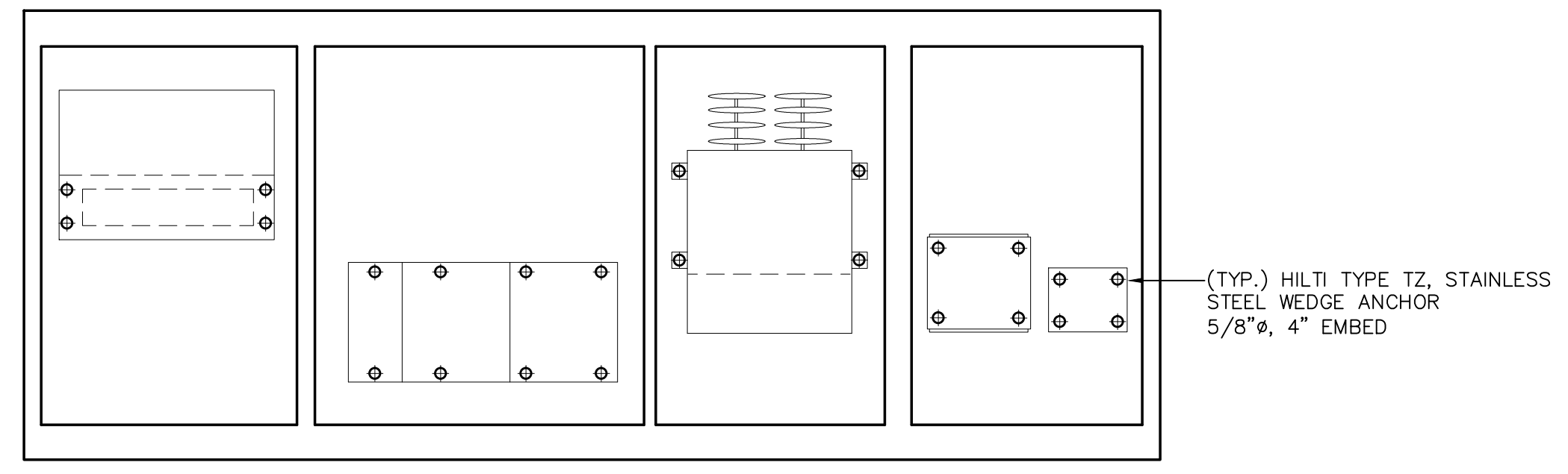


**6 PADMOUNT TRANSFORMER CONNECTIONS**  
N.T.S.

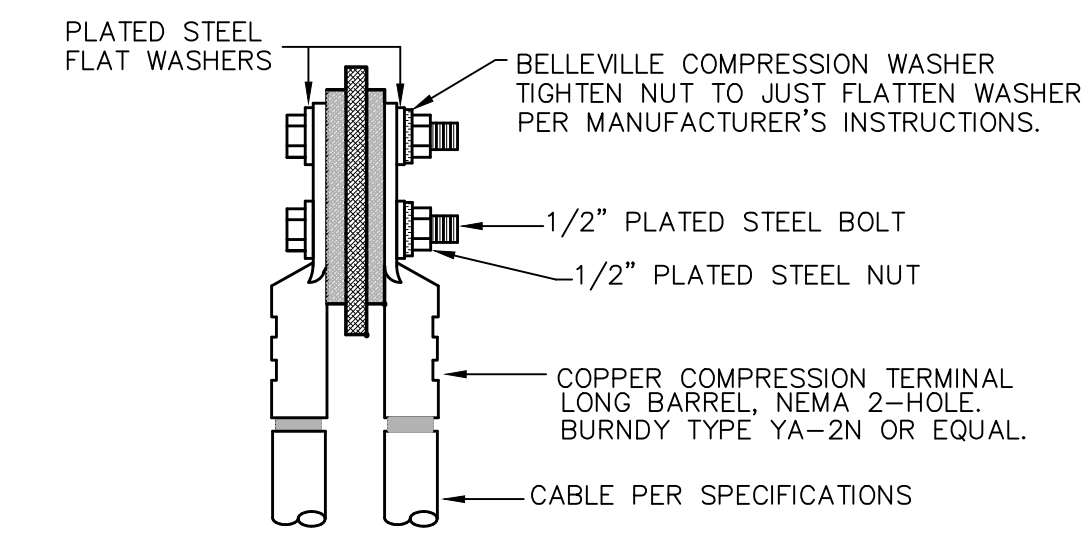


- DEMOLITION NOTES**
1. REMOVE ENTIRE UNIT INCLUDING METAL ENCLOSURE, TRANSFORMER, HIGH VOLTAGE SWITCHES, AND LOW VOLTAGE CIRCUIT BREAKERS. PROVIDE PROPER DISPOSAL; EQUIPMENT IS NOT SUITABLE FOR REUSE. NOTIFY OWNER IF HAZARDOUS MATERIALS, SUCH AS ASBESTOS, ARE DISCOVERED.
  2. REMOVE UNUSED CONDUIT, CABLE TRAY, AND CONDUCTORS.
  3. REMOVE FLOOR CHANNELS AND RETROFIT SEISMIC ATTACHMENT. GRIND ABANDONED BOLTS FLUSH.
  4. PATCH ANY HOLES THAT REMAIN. REMOVE ANY TEMPORARY DRAINAGE AND UNAUTHORIZED DEBRIS. LEAVE FLOOR CLEAN AND FREE OF OBSTRUCTIONS.
  5. CONFIGURATION OF THE METAL MESH PARTITION IS DIAGRAMMATIC. FINAL LAYOUT TO BE DETERMINED BASED UPON ACTUAL LOCATION OF NEW WALL OPENING FOR CONDUITS AT WEST WALL.

**4 LC #4 VAULT MODIFICATIONS**  
N.T.S.



**8 ANCHOR BOLT PLAN**  
N.T.S.



**7 600V BUS CONNECTIONS**  
N.T.S.