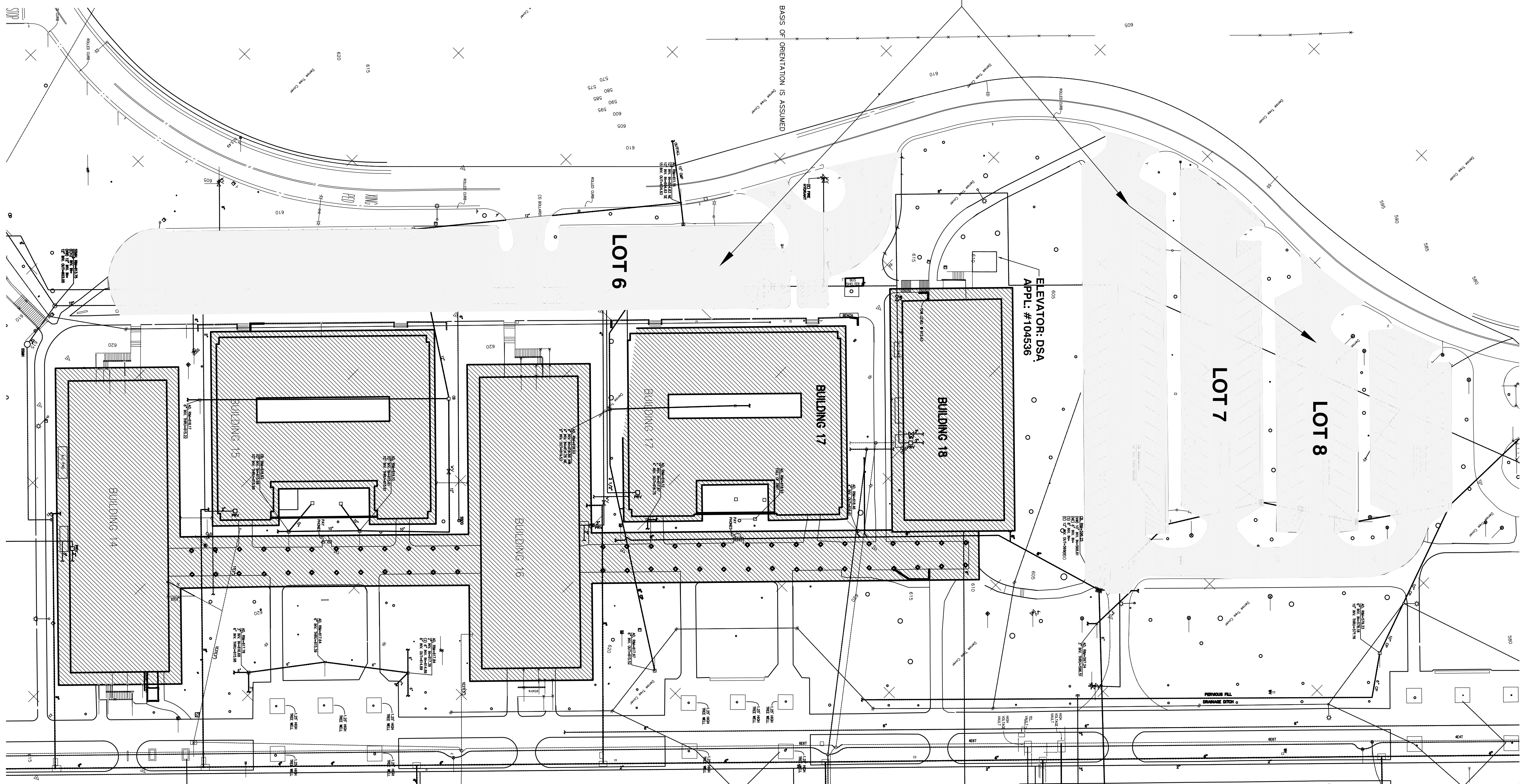


1 2 3 4 5 6 7 8 9 10 11 12 13 14 15 16 17 18 19 20 21 22 23 24 25 26 27 28 29 30

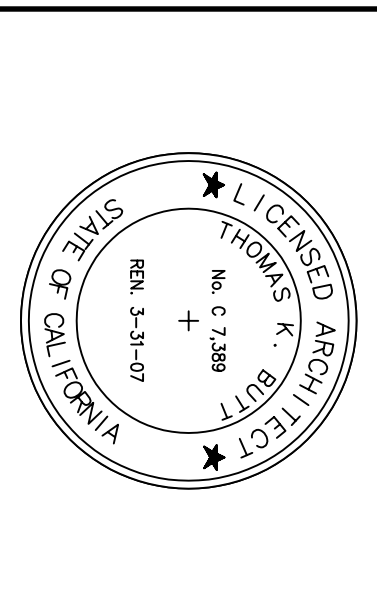
**(N) PAVING LOT 6,
7 AND 8 (SHADED)**



1A
PARKING LOTS PAVING PLAN

REVISION	DESCRIPTION	INITIAL	DATE

ADDENDUM	K18	4/1/04
PRE-APPLICATION REVIEW	02/06/04	
ISSUED FOR PLAN CHECK	03/03/04	
ISSUED FOR PERMIT	03/03/04	
ISSUED FOR BID		
ISSUED FOR CONSTRUCTION		



CONSULTANT:

INTERACTIVE
ARCHITECTURE • PLANNING • ENGINEERING
117 PARK PLACE
POINT RICHMOND
CALIFORNIA 94801
(916) 236-7435
(FAX) 232-5325
http://www.interac.com

PROJECT:
**BUILDING NO. 18
(NORTH HALL)
MODERNIZATION**

COLLEGE OF SAN MATEO
1700 WEST HILLSDALE BLVD,
SAN MATEO, CA 94402

SAN MATEO CO. COMMUNITY
COLLEGE DISTRICT

DIV. OF PERMITS AND SIGNING OFFICE OF RESOLUTION SERVICES APPL 106047 DATE: 1/3 SS	APPROVED DIV. OF THE STATE ARCHITECT APPL 106047 DATE: 1/3 SS
---	--

SHEET TITLE:
**PAVING PLAN
LOTS 6, 7 AND 8**

PROJ. NO. 2002-066.02
PREPARATION AND REVIEW

DRAWN BY: BA
DESIGNED BY: K18
CHECKED BY: K18
PEER REVIEW:

SHEET NUMBER:
**MOD
A1.3**