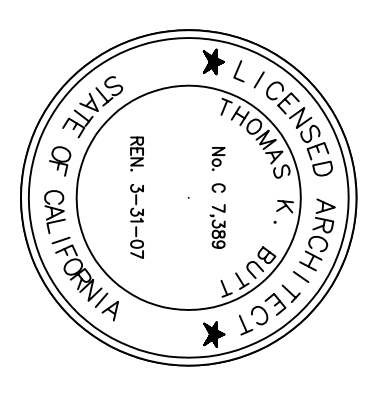


REVISION	DESCRIPTION	INITIAL	DATE
1	ISSUED FOR PERMIT		03/03/04
2	ISSUED FOR CONSTRUCTION		03/03/04



DATE: 4/7/05
 DRAWN BY: TBG
 CHECKED BY: TBG
 PROJECT: COLLEGE OF SAN MATEO
 SHEET: 119

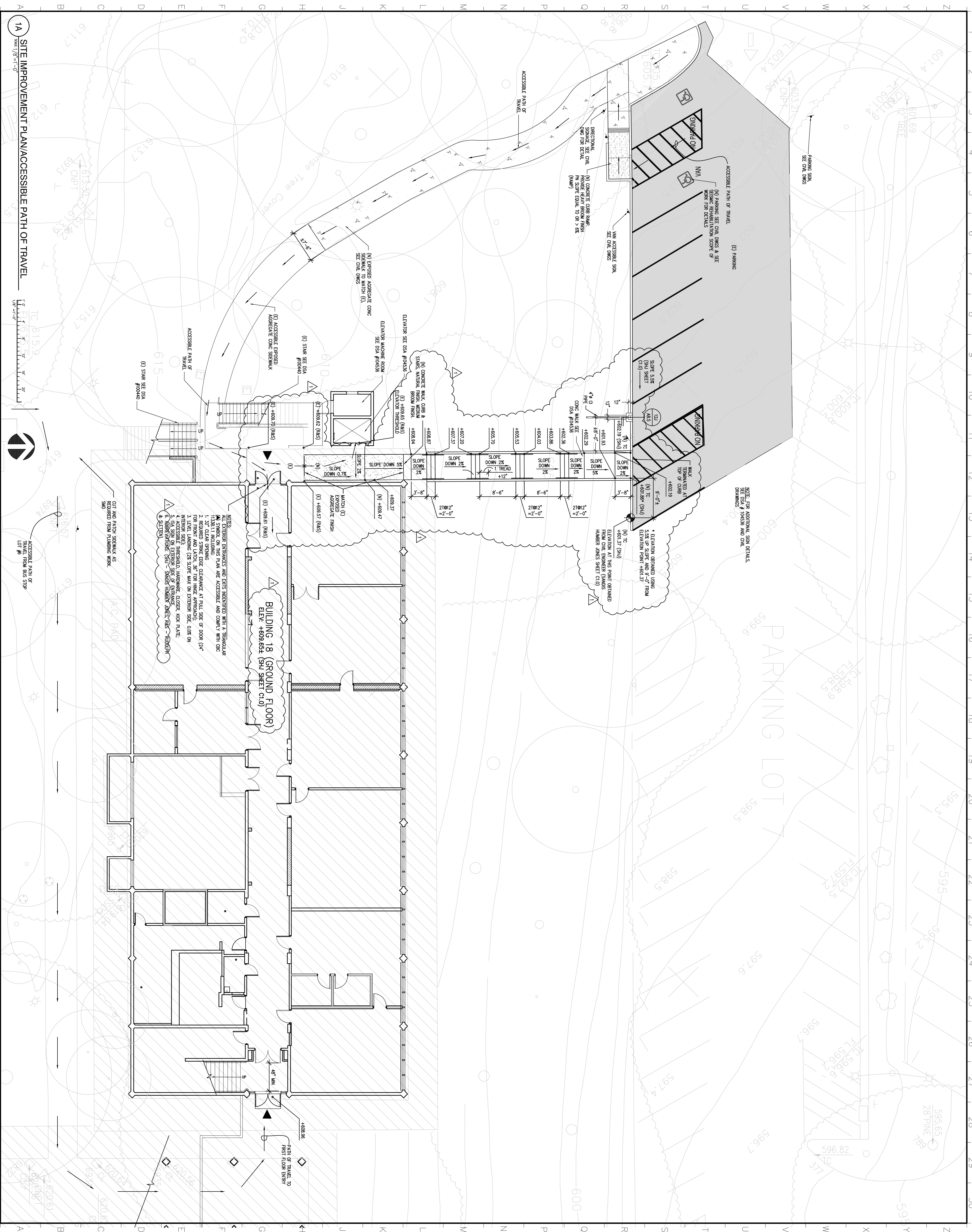
INTERACTIVE
 ARCHITECTURE • PLANNING • ENGINEERING
 117 PARK PLACE
 POINT RICHMOND
 CALIFORNIA 94801
 (910) 236-7435
 (FAX) 232-5325
 http://www.interactive.com

**BUILDING NO. 18
 (NORTH HALL)
 MODERNIZATION**
 COLLEGE OF SAN MATEO
 1700 WEST HILLSDALE BLVD,
 SAN MATEO, CA 94402
 SAN MATEO CO. COMMUNITY
 COLLEGE DISTRICT

DATE: 1/31/05
 APPROVED: APPL 106047
 DATE: 1/31/05
 APPROVED: APPL 106047
 DATE: 1/31/05

**SITE IMPROVEMENT
 PLAN/PATH
 OF TRAVEL**

1.2
 A
 OF



1A SITE IMPROVEMENT PLAN/ACCESSIBLE PATH OF TRAVEL
 SCALE: 1/8" = 1'-0"
 1" = 8'-0"
 NORTH ARROW