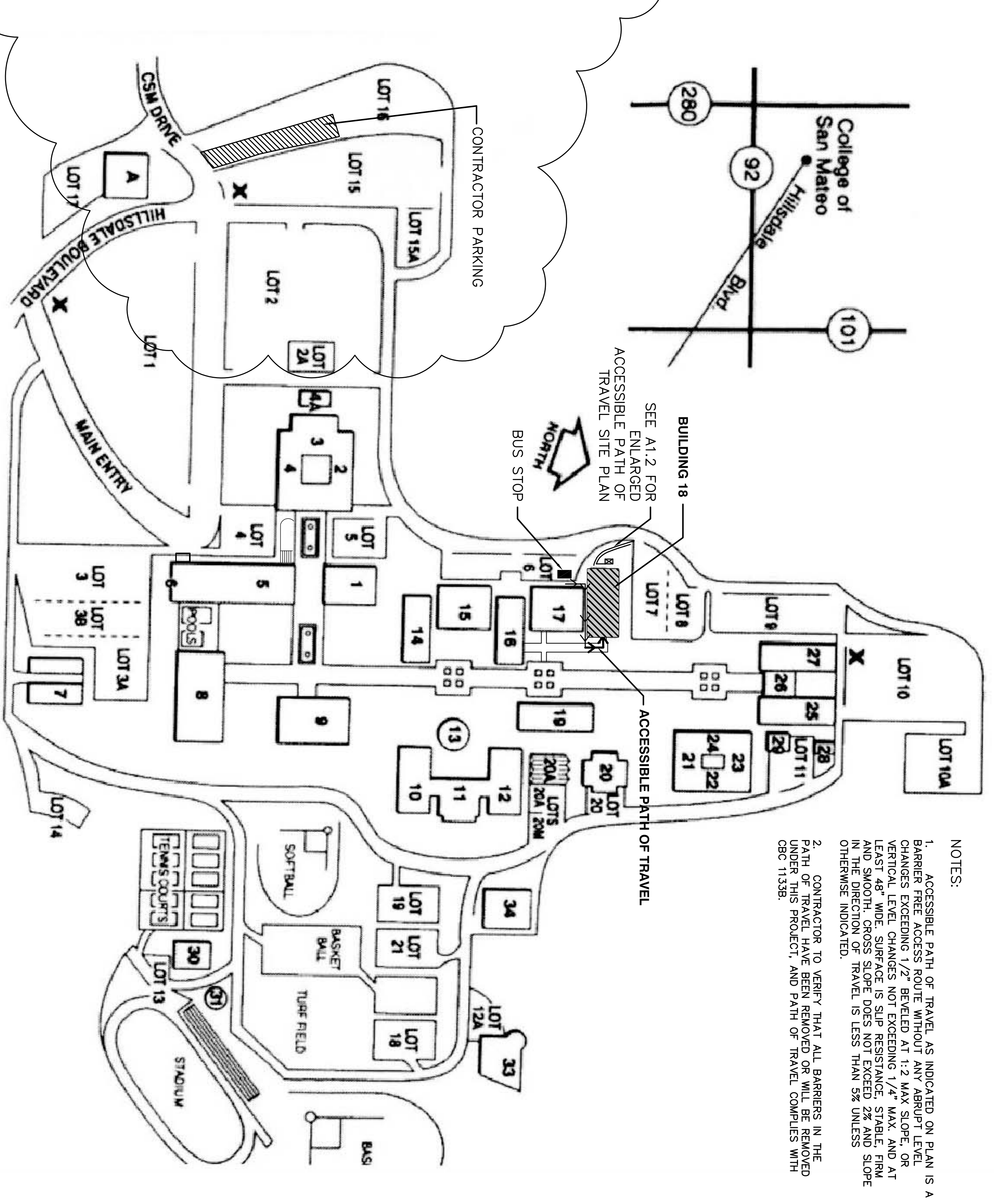


NOTES:  
 1. ACCESSIBLE PATH OF TRAVEL AS INDICATED ON PLAN IS A BARRIER FREE ACCESS ROUTE WITHOUT ANY ABRUPT LEVEL CHANGES EXCEEDING 1/2" BEYOND A 1:2 MAX SLOPE, OR AT LEAST 48" WIDE SURFACE IS SLP RESISTANCE STABLE FIRM AND SMOOTH, CROSS SLOPE DOES NOT EXCEED 2% AND SLOPE OTHERWISE INDICATED.  
 2. CONTRACTOR TO VERIFY THAT ALL BARRIERS IN THE 24TH OF THIS PROJECT AND PATH OF TRAVEL COMPLES WITH OBC 11338.



17L (E) ACCESSIBLE PATH OF TRAVEL  
SCALE AS NOTED

**OCCUPANT LOAD**

ROOM NO.	NAME	AREA SQT.	OCCUPANT LOAD FACTOR	NO. OF OCCUPANTS PROVIDED
76	RECEPTION CENTER	50	20	1000
77	OFFICE	100	20	2000
78	OFFICE	100	20	2000
79	OFFICE	100	20	2000
80	OFFICE	100	20	2000
81	OFFICE	100	20	2000
82	OFFICE	100	20	2000
83	OFFICE	100	20	2000
84	OFFICE	100	20	2000
85	OFFICE	100	20	2000
86	OFFICE	100	20	2000
87	OFFICE	100	20	2000
88	OFFICE	100	20	2000
89	OFFICE	100	20	2000
90	OFFICE	100	20	2000
91	OFFICE	100	20	2000
92	OFFICE	100	20	2000
93	OFFICE	100	20	2000
94	OFFICE	100	20	2000
95	OFFICE	100	20	2000
96	OFFICE	100	20	2000
97	OFFICE	100	20	2000
98	OFFICE	100	20	2000
99	OFFICE	100	20	2000
100	OFFICE	100	20	2000
101	OFFICE	100	20	2000
102	OFFICE	100	20	2000
103	OFFICE	100	20	2000
104	OFFICE	100	20	2000
105	OFFICE	100	20	2000
106	OFFICE	100	20	2000
107	OFFICE	100	20	2000
108	OFFICE	100	20	2000
109	OFFICE	100	20	2000
110	OFFICE	100	20	2000
111	OFFICE	100	20	2000
112	OFFICE	100	20	2000
113	OFFICE	100	20	2000
114	OFFICE	100	20	2000
115	OFFICE	100	20	2000
116	OFFICE	100	20	2000
117	OFFICE	100	20	2000
118	OFFICE	100	20	2000
119	OFFICE	100	20	2000
120	OFFICE	100	20	2000
121	OFFICE	100	20	2000
122	OFFICE	100	20	2000
123	OFFICE	100	20	2000
124	OFFICE	100	20	2000
125	OFFICE	100	20	2000
126	OFFICE	100	20	2000
127	OFFICE	100	20	2000
128	OFFICE	100	20	2000
129	OFFICE	100	20	2000
130	OFFICE	100	20	2000
131	OFFICE	100	20	2000
132	OFFICE	100	20	2000
133	OFFICE	100	20	2000
134	OFFICE	100	20	2000
135	OFFICE	100	20	2000
136	OFFICE	100	20	2000
137	OFFICE	100	20	2000
138	OFFICE	100	20	2000
139	OFFICE	100	20	2000
140	OFFICE	100	20	2000
141	OFFICE	100	20	2000
142	OFFICE	100	20	2000
143	OFFICE	100	20	2000
144	OFFICE	100	20	2000
145	OFFICE	100	20	2000
146	OFFICE	100	20	2000
147	OFFICE	100	20	2000
148	OFFICE	100	20	2000
149	OFFICE	100	20	2000
150	OFFICE	100	20	2000
151	OFFICE	100	20	2000
152	OFFICE	100	20	2000
153	OFFICE	100	20	2000
154	OFFICE	100	20	2000
155	OFFICE	100	20	2000
156	OFFICE	100	20	2000
157	OFFICE	100	20	2000
158	OFFICE	100	20	2000
159	OFFICE	100	20	2000
160	OFFICE	100	20	2000
161	OFFICE	100	20	2000
162	OFFICE	100	20	2000
163	OFFICE	100	20	2000
164	OFFICE	100	20	2000
165	OFFICE	100	20	2000
166	OFFICE	100	20	2000
167	OFFICE	100	20	2000
168	OFFICE	100	20	2000
169	OFFICE	100	20	2000
170	OFFICE	100	20	2000
171	OFFICE	100	20	2000
172	OFFICE	100	20	2000
173	OFFICE	100	20	2000
174	OFFICE	100	20	2000
175	OFFICE	100	20	2000
176	OFFICE	100	20	2000
177	OFFICE	100	20	2000
178	OFFICE	100	20	2000
179	OFFICE	100	20	2000
180	OFFICE	100	20	2000
181	OFFICE	100	20	2000
182	OFFICE	100	20	2000
183	OFFICE	100	20	2000
184	OFFICE	100	20	2000
185	OFFICE	100	20	2000
186	OFFICE	100	20	2000
187	OFFICE	100	20	2000
188	OFFICE	100	20	2000
189	OFFICE	100	20	2000
190	OFFICE	100	20	2000
191	OFFICE	100	20	2000
192	OFFICE	100	20	2000
193	OFFICE	100	20	2000
194	OFFICE	100	20	2000
195	OFFICE	100	20	2000
196	OFFICE	100	20	2000
197	OFFICE	100	20	2000
198	OFFICE	100	20	2000
199	OFFICE	100	20	2000
200	OFFICE	100	20	2000

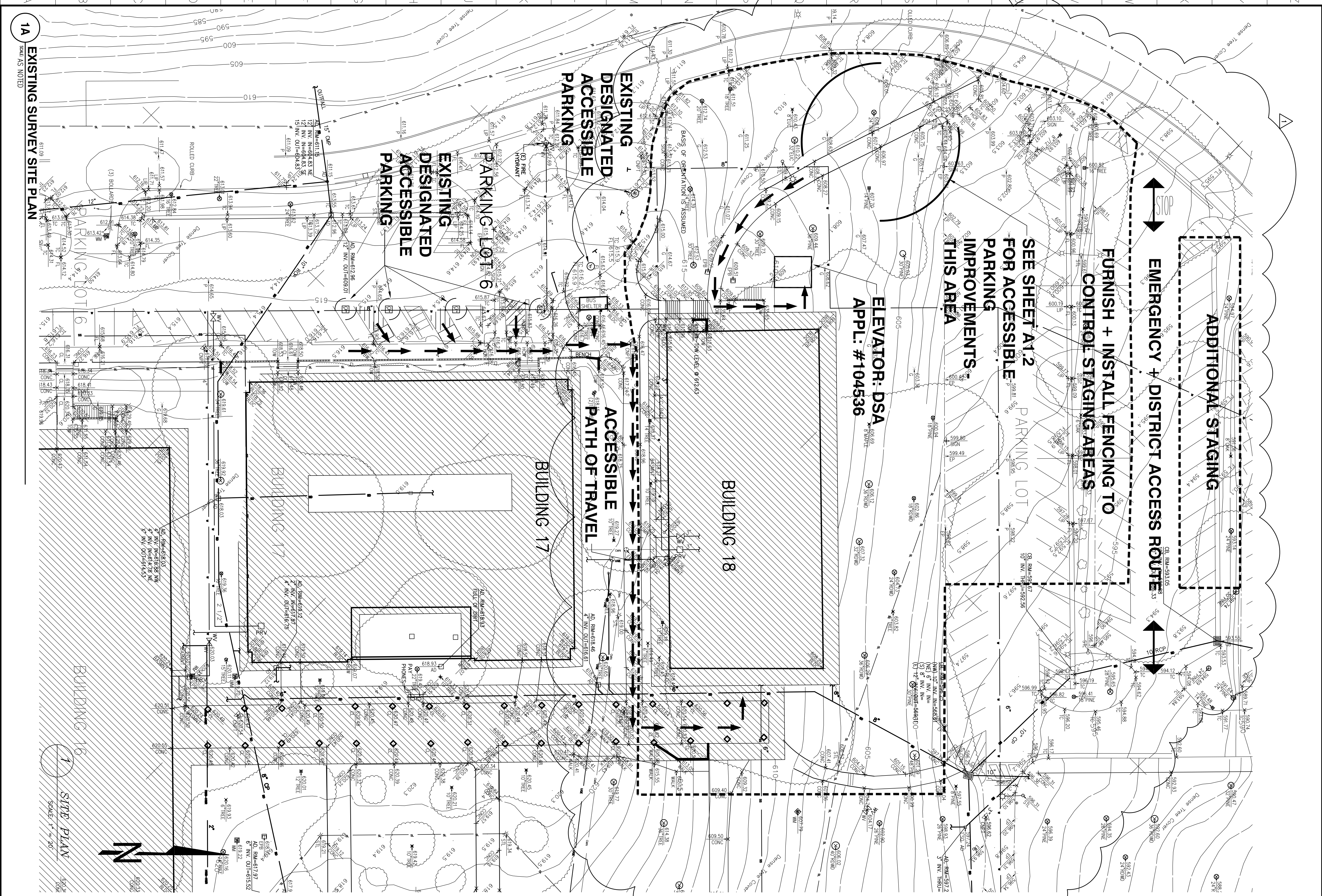
- ACCESSIBLE PARKING NOTES:**
- BUILDING 18 IS SERVED BY THREE ADJACENT PARKING LOTS - 6, 7, AND 8, WITH A TOTAL OF 180 SPACES.
  - 180 SPACES REQUIRE 6 ACCESSIBLE SPACES.
  - OF THE 6 REQUIRED SPACES, 3 SPACES INCLUDING ONE VAN SPACE, ARE PROVIDED IN AN ADJACENT LOT AND UPGRADED FOR FULL COMPLIANCE IN THIS PROJECT SCOPE OF WORK.
  - FOUR ADDITIONAL SPACES ARE EXISTING IN PARKING LOT 6.
  - NO STUDENTS OCCUPANCY IN BUILDING WHILE FENCING IN PLACE.

**PLUMBING FIXTURES REQUIREMENTS**

TYPE OF BUILDING OR OCCUPANCY	WC FIXTURES PER PERSON	URINALS PER PERSON	LAVATORIES PER PERSON
SCHOOLS - FOR STUDENT USE	1/100	1/100	1/100
OFFICE	1/100	1/100	1/100
RETAIL	1/100	1/100	1/100
RESTAURANT	1/100	1/100	1/100
THEATER	1/100	1/100	1/100
CONVENTION CENTER	1/100	1/100	1/100
RECREATION CENTER	1/100	1/100	1/100
INDUSTRIAL	1/100	1/100	1/100
LABORATORY	1/100	1/100	1/100
WATER TREATMENT PLANT	1/100	1/100	1/100
WATER SUPPLY PLANT	1/100	1/100	1/100
WATER TOWER	1/100	1/100	1/100
WATER PUMP HOUSE	1/100	1/100	1/100
WATER STORAGE TANK	1/100	1/100	1/100
WATER DISTRIBUTION SYSTEM	1/100	1/100	1/100
WATER TREATMENT PLANT	1/100	1/100	1/100
WATER SUPPLY PLANT	1/100	1/100	1/100
WATER TOWER	1/100	1/100	1/100
WATER PUMP HOUSE	1/100	1/100	1/100
WATER STORAGE TANK	1/100	1/100	1/100
WATER DISTRIBUTION SYSTEM	1/100	1/100	1/100

**ACCESSORY USE AREAS INCLUDING CORRIDORS, TRUNK ROOMS, VESTIBULE STORAGE, MEN, MEN, SHOWERS, HUBBERS AND VAN LIFT AND STORAGE.**

**NOTE:** COMPANIES SHOWING ARE LESS THAN ALLOWABLE UNDER TABLE 101-A & 101-B, SO THE TOTAL OCCUPANT LOAD FROM EACH FLOOR WILL NOT EXCEED THAT ALLOWED BY THE TABLE. MAXIMUM OCCUPANCY SHALL BE POSTED. **NOTE:** ONE TABLE 4-1 WORTH FOR EACH PERSON ADDED IN EXCESS OF MIN. REQUIRE. ONE WATER CLOSET SHALL BE PROVIDED. **NOTE:** WATER CLOSET SHALL BE SUBSTITUTED BY 3 ADDITIONAL SINKS, AS REQUIRED BY O.C.



1A EXISTING SURVEY SITE PLAN  
SCALE AS NOTED

**PARKING LOT 7 TO BUILDING 18 AREA TOPOGRAPHIC SURVEY**  
 SAN MATEO CALIFORNIA

**College Of San Mateo**  
 1700 Hillsdale Boulevard  
 San Mateo, CA 94402

**SANDIS HUMBER JONES**  
 CIVIL ENGINEERS SURVEYORS PLANNERS

1700 Broadway, Suite 200, San Mateo, CA 94402 (415) 873-8866 (415) 873-8868

**INTERACTIVE**  
 ARCHITECTURE • PLANNING • ENGINEERING

117 PARK PLACE  
 POINT RICHMOND  
 CALIFORNIA 94801  
 (910) 238-7435  
 (FAX) 232-5325  
 http://www.interac.com

**BUILDING NO. 18 (NORTH HALL) MODERNIZATION**

**SAN MATEO CO. COMMUNITY COLLEGE DISTRICT**

**DR. SANDIS HUMBER JONES**  
 OFFICE OF RESOLUTION SERVICES  
 APPL 106047  
 DATE: 11-13-10

**DR. SANDIS HUMBER JONES**  
 APPROVED  
 APPL 106047  
 DATE: 11-13-10

**EXISTING SURVEY SITE PLAN AND ACCESSIBLE PATH OF TRAVEL**

**MOD A1.1**

REVISION	DESCRIPTION	INITIAL	DATE
ADDENDUM	K18 4/1/04		
PRE-APPLICATION REVIEW	02/26/04		
ISSUED FOR PLAN CHECK	03/03/04		
ISSUED FOR PERMIT	03/03/04		
ISSUED FOR CONSTRUCTION			