



McCarthy Building Companies, Inc.
 343 Serrano St., Suite 1410
 San Francisco, California 94104
 P 415 397-5151
 F 415 397-5999

REGISTRATION STATE: CALIFORNIA
 LICENSE NO.: M28952
 EXPIRES: 6/30/10
 APPL. #: 01-10095
 FILE NUMBER: 41-C1



J.W. MCCLENNAHAN CO.
 2001 PALM AVE
 SAN LUIS OBISPO, CA 94943
 TEL: (805) 345-5888
 FAX: (805) 345-5888

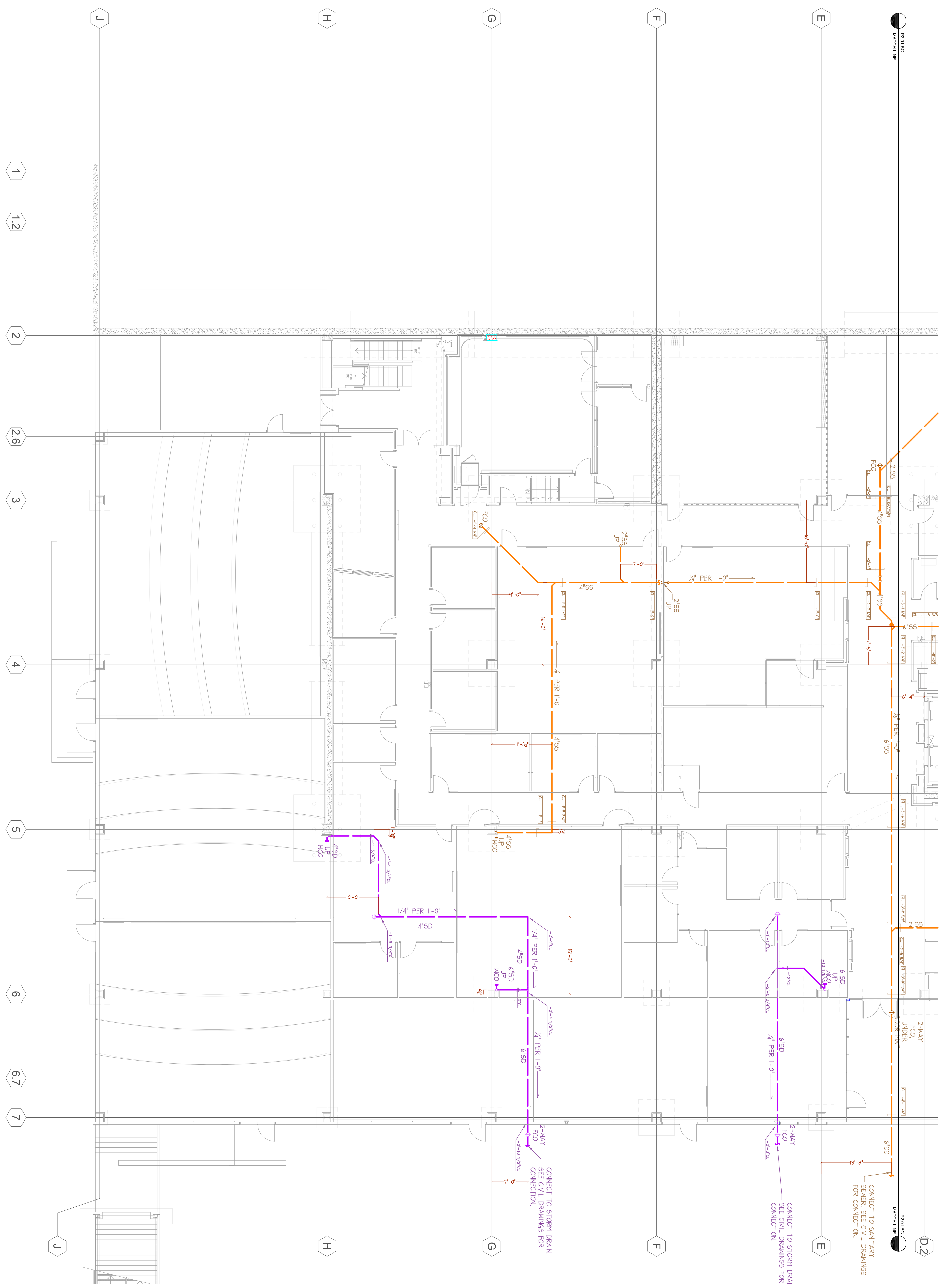
The seal of the Professional Engineer shall be used only on drawings, specifications, reports, or other documents prepared by the engineer or under his direct supervision and control. It shall not be used on drawings, specifications, reports, or other documents prepared by another person, even if the engineer has reviewed them. The seal shall be used only on drawings, specifications, reports, or other documents prepared by the engineer or under his direct supervision and control. It shall not be used on drawings, specifications, reports, or other documents prepared by another person, even if the engineer has reviewed them.

**College of San Mateo
 Building 10N**
 San Mateo, CA
 Developed for
 San Mateo County Community College District

Revision	Description	Date

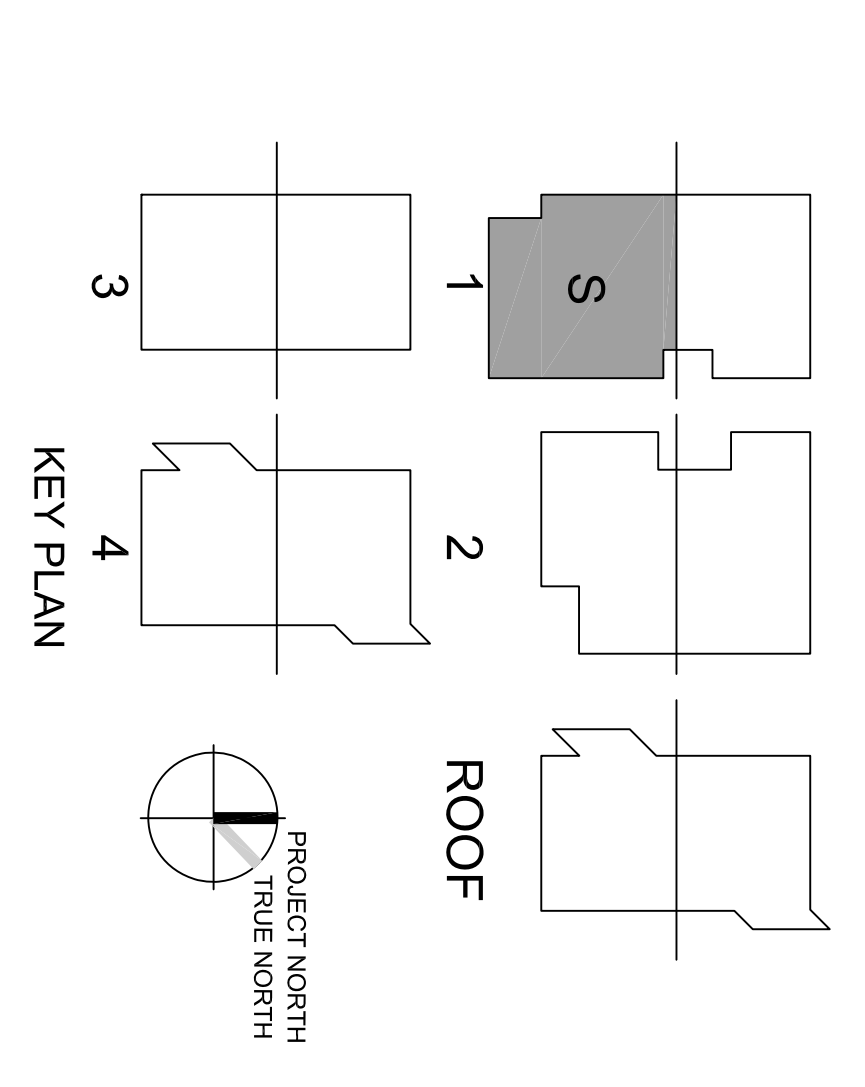
Revision	Description	Date

Job No.	2706/231
Date	March 2008
Checked by	TK
Scale	
PLUMBING PLAN FIRST FLOOR (S) BELOW GROUND	
P2.02.BG	



1 Underground Plumbing Plan - Level 1 South
 SCALE: 1/8"=1'-0"

J.W. MCCLENNAHAN CO.
 2001 PALM AVE
 SAN LUIS OBISPO, CA 94943
 TEL: (805) 345-5888
 FAX: (805) 345-5888





J.W. McCLELLAN CO.
2201 PALM AVE
SAN MATEO, CA 94403
TEL (650) 345-5888
FAX (650) 345-5888

San Mateo, CA
Developed for
San Mateo County Community College District

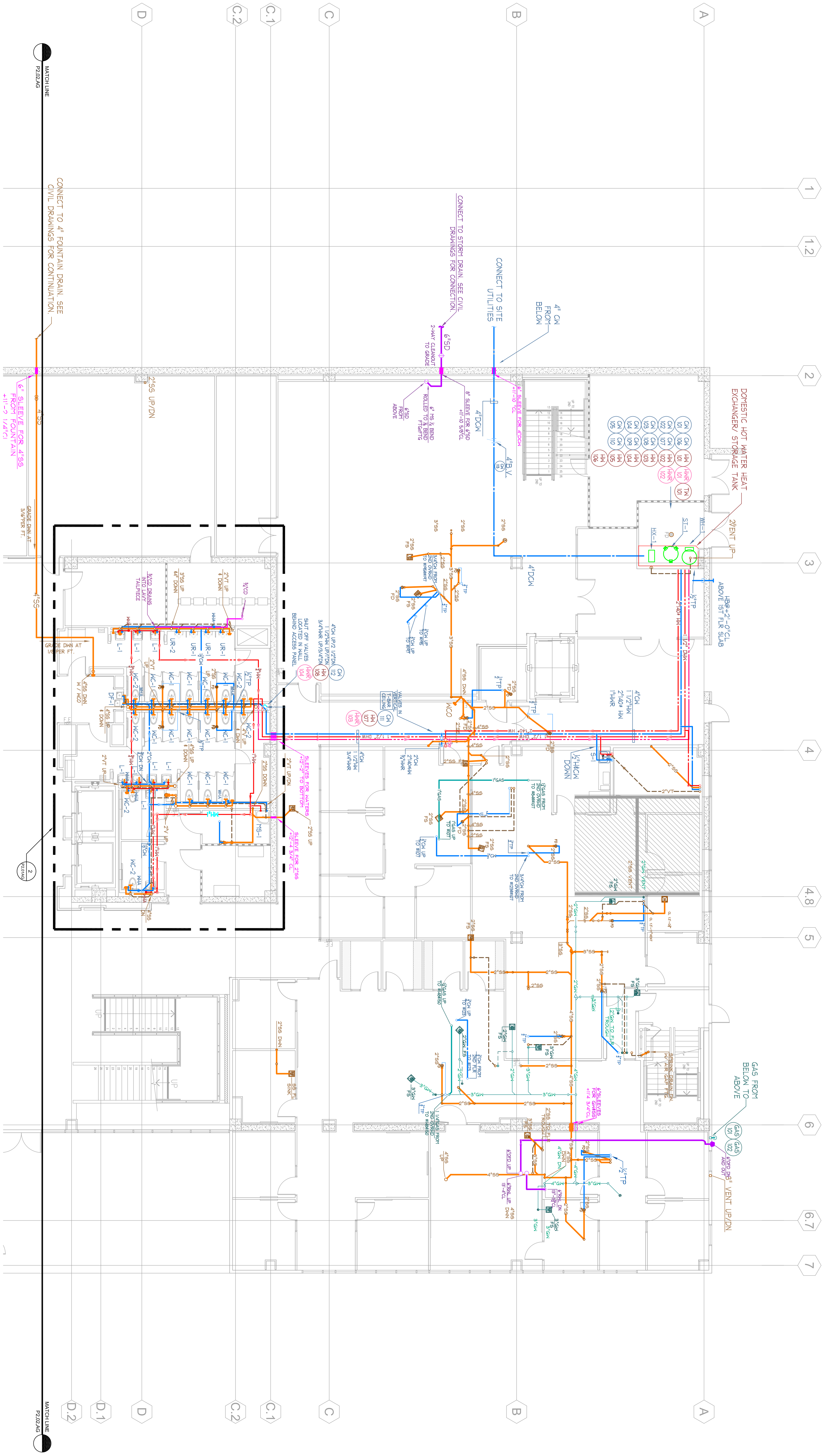
College of San Mateo
Building 10N

Revision	Description	Date

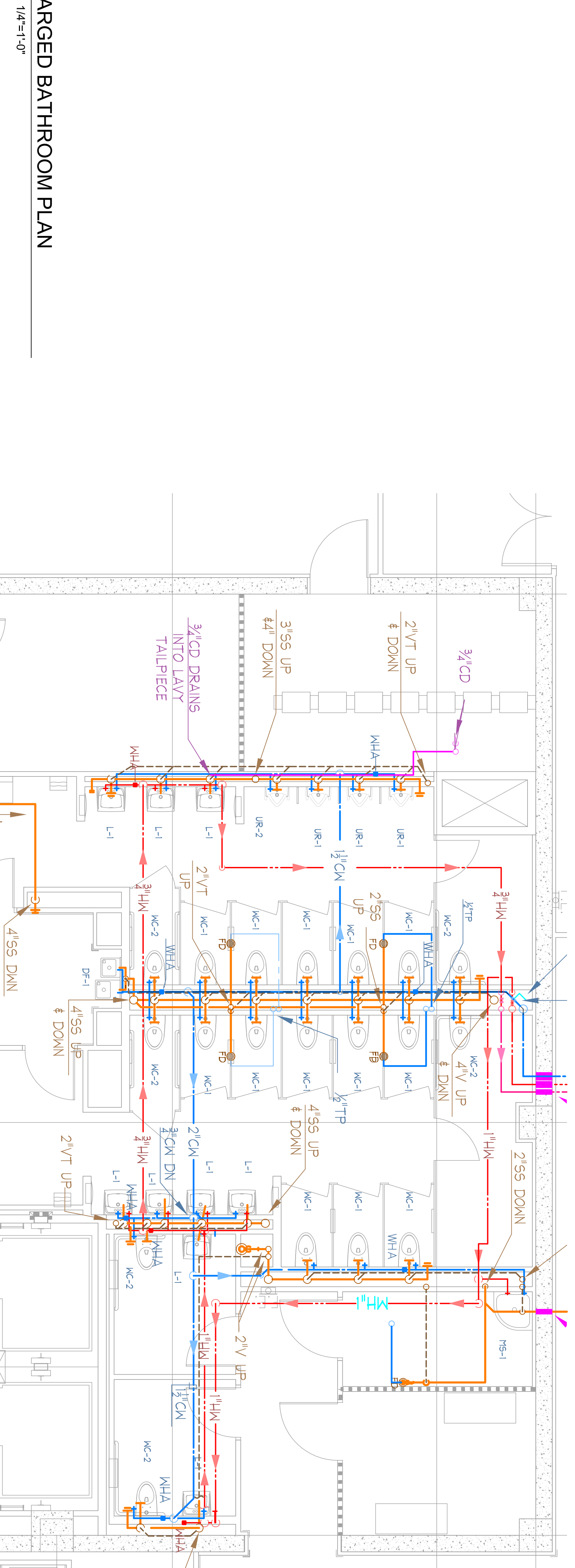
Revision	Description	Date
06/15/08	100% Design Development	06/15/08
08/15/08	50% Construction Documents	08/15/08
08/28/08	95% Construction Documents	08/28/08
11/11/09	DSA Final	11/11/09

Job No.	22012201
Drawn	Manoj Datta
Checked by	SCD
Scale	1/8" = 1'-0"

PLUMBING PLAN
FIRST FLOOR (N)
ABOVE GROUND
P2.01.AG



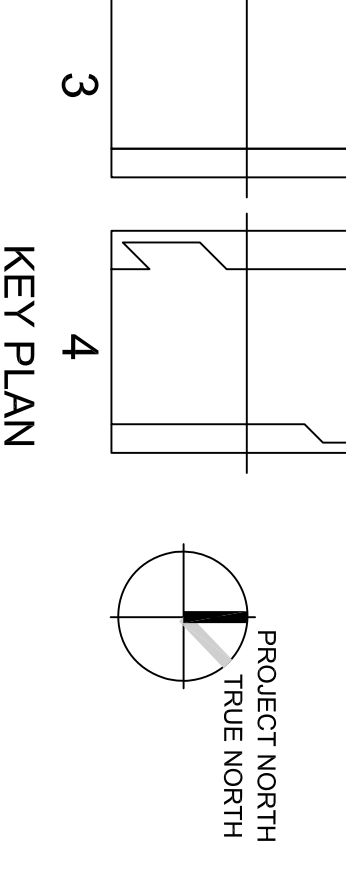
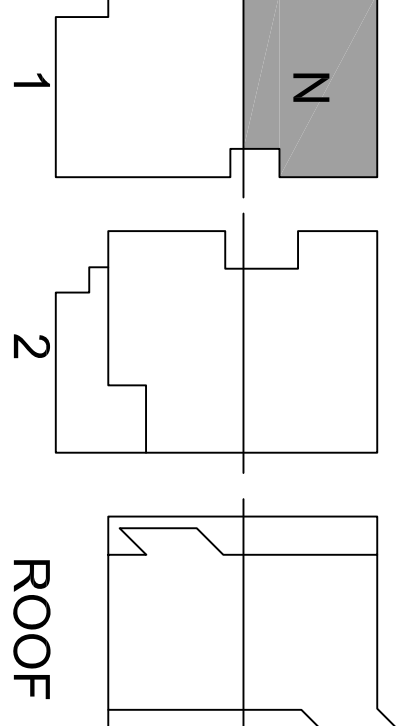
1 Above Ground Plumbing Plan - Level 1 North
SCALE: 1/8"=1'-0"

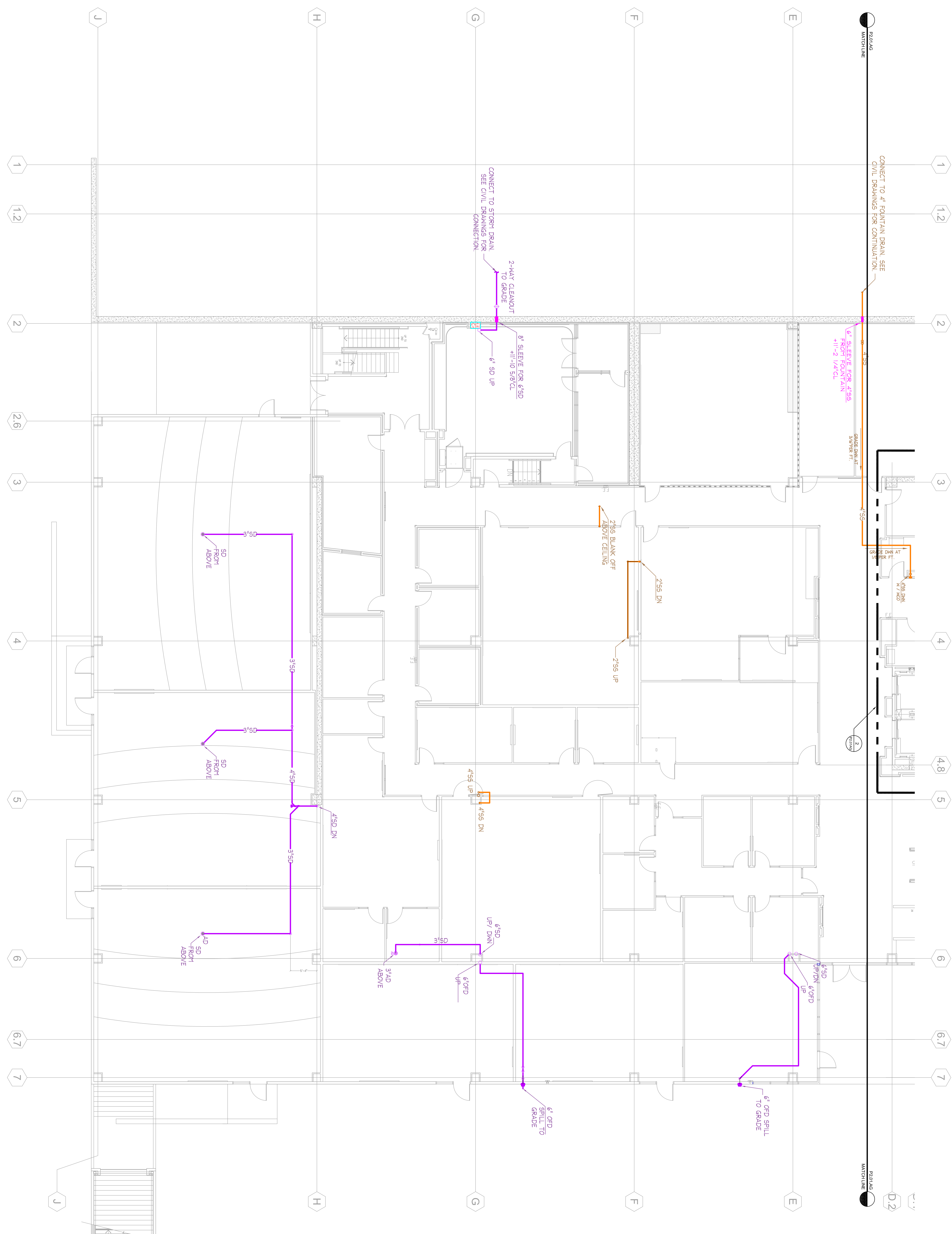


2 ENLARGED BATHROOM PLAN
SCALE: 1/4"=1'-0"

J.W. McCLELLAN CO.
2201 PALM AVE
SAN MATEO, CA 94403
TEL (650) 345-5888
FAX (650) 345-5888

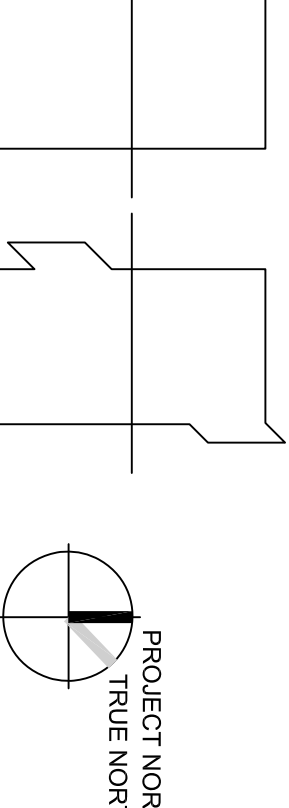
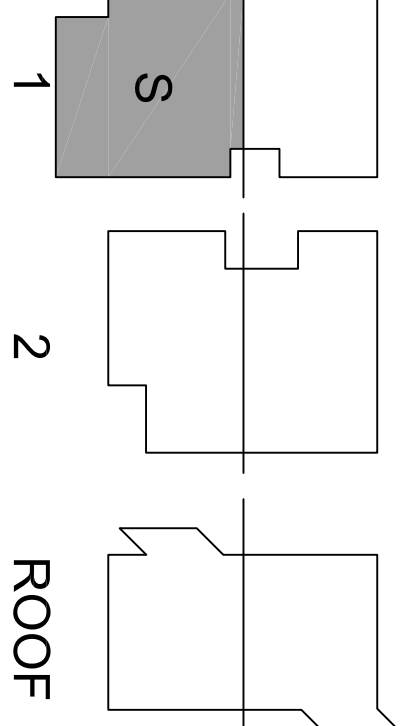
RECORD DOCUMENT
DATE: October 15, 2010





1 Above Ground Plumbing Plan - Level 1 South
 SCALE: 1/8"=1'-0"

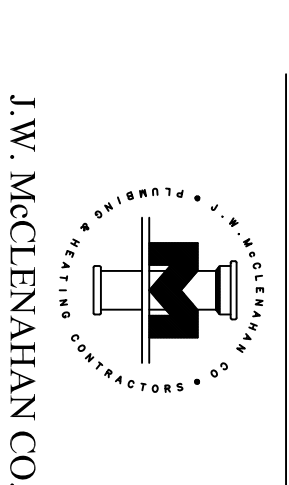
J.W. McCLENAHAN CO.
 REGISTERED PROFESSIONAL ENGINEER
 No. M28952
 Exp. 6/30/10
 MECHANICAL
 STATE OF CALIFORNIA
 2201 PALM AVE
 SAN LUIS OBISPO, CA 94943
 TEL: (805) 345-5881
 FAX: (805) 345-5881



Revision	Description	Date
100%	Design Development	06/30/08
90%	Construction Documents	07/18/08
95A	Submittal	08/14/08
95B	Construction Documents	12/08/08
95A	Final	03/11/09

**College of San Mateo
 Building 10N**
 San Mateo, CA
 Developed for
 San Mateo County Community College District

J.W. McCLENAHAN CO.
 2201 PALM AVE
 SAN LUIS OBISPO, CA 94943
 TEL: (805) 345-5881
 FAX: (805) 345-5881

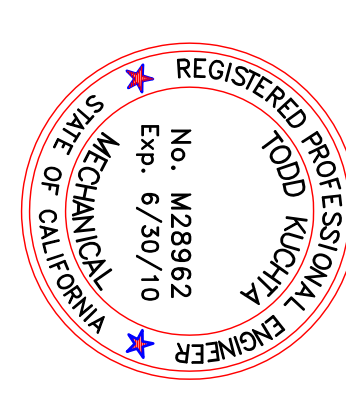


DATE:	4-1-11
FILE NUMBER:	41-C1
APPL. #:	01-110095
PROJECT NAME:	COLLEGE OF SAN MATEO BUILDING 10N

McCarthy Building Companies, Inc.
 343 Serrano Street, Suite 1410
 San Francisco, California 94104
 P 415.397.5151
 F 415.397.5999



P2.02.AG
 PLUMBING PLAN
 FIRST FLOOR (S)
 ABOVE GROUND



J.W. McCLELLANHAN CO.
 2001 PALM AVE
 SAN LITO, CA 94032
 SAN LITO, CA 94032
 TEL: (650) 345-5888
 FAX: (650) 345-5888

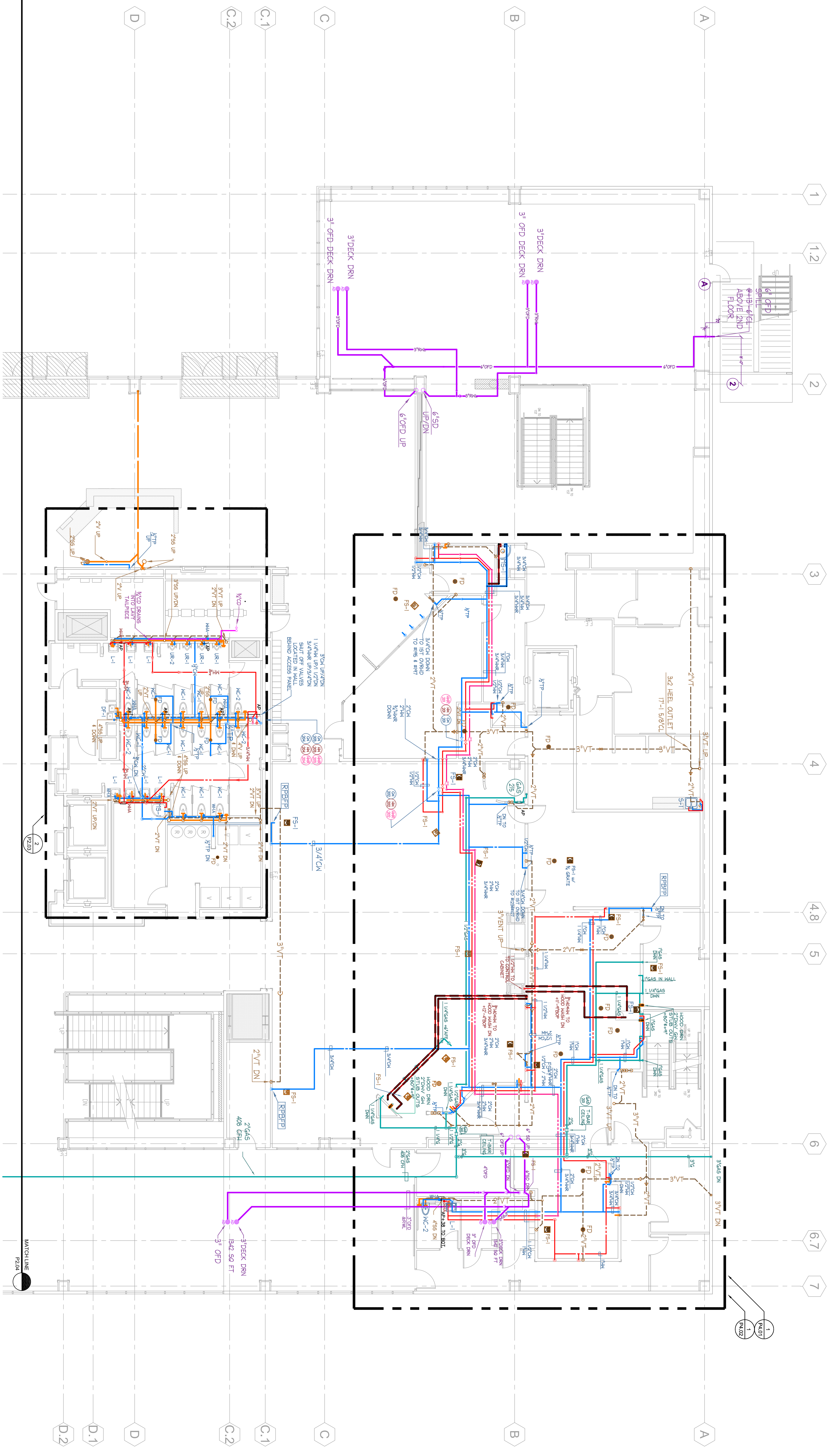
The seal of the Professional Engineer shall be used only on drawings, specifications, reports, or other documents prepared by the engineer or under the direct supervision and control of the engineer. The seal shall not be used on drawings, specifications, reports, or other documents prepared by a draftsman, architect, or other person who is not a registered professional engineer. The seal shall not be used on drawings, specifications, reports, or other documents prepared by the engineer or under the direct supervision and control of the engineer if the documents are not in accordance with the applicable laws and regulations of the State of California.

College of San Mateo
Building 10N
 San Mateo, CA
 Developed for
 San Mateo County Community College District

Revision	Description	Date

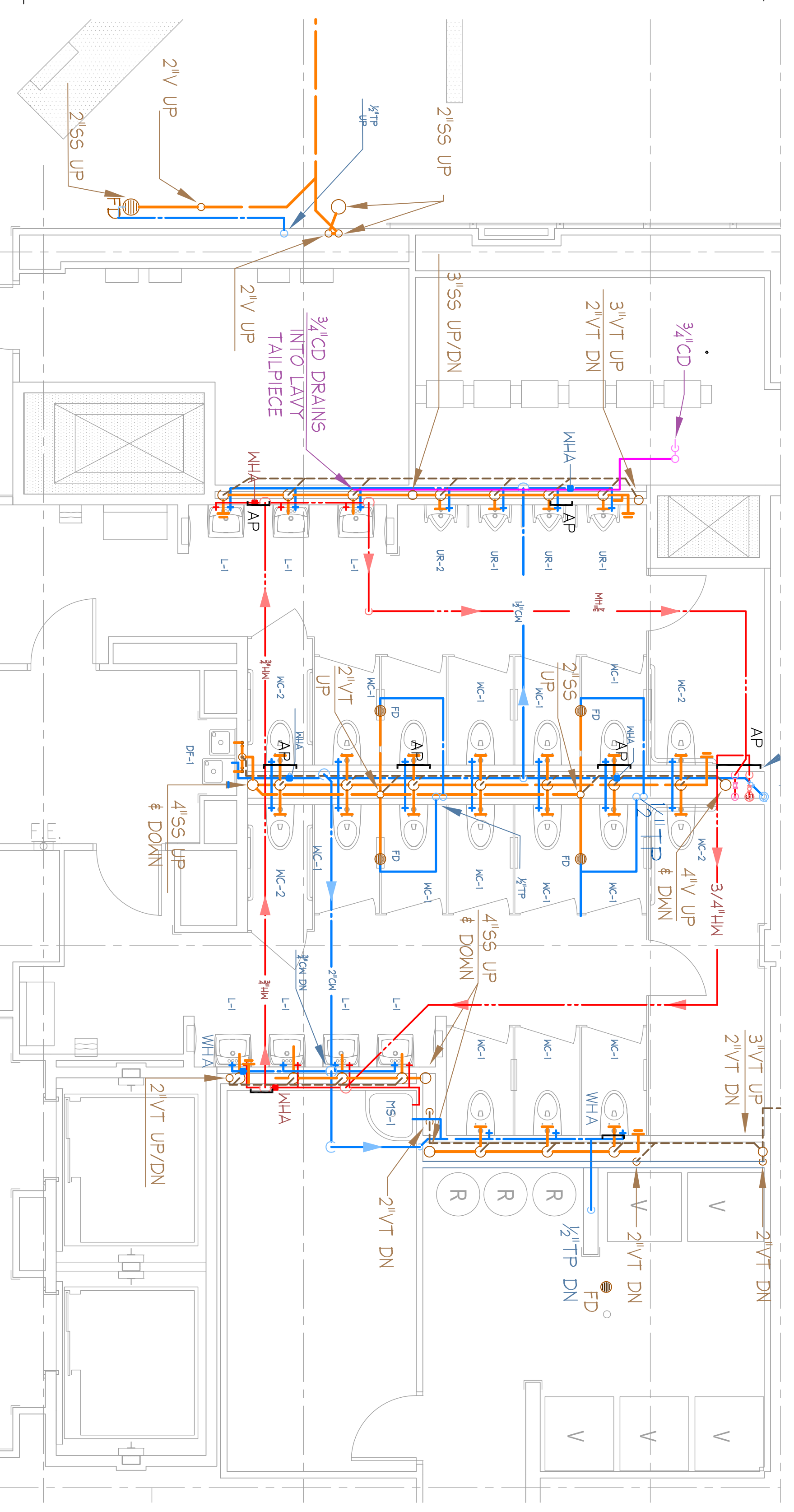
Revision	Description	Date

Job No.	27062201
Drawn	Manoel 2008
Checked by	TK
Scale	1/8" = 1'-0"
PLUMBING PLAN	
SECOND FLOOR (N)	
P2.03	

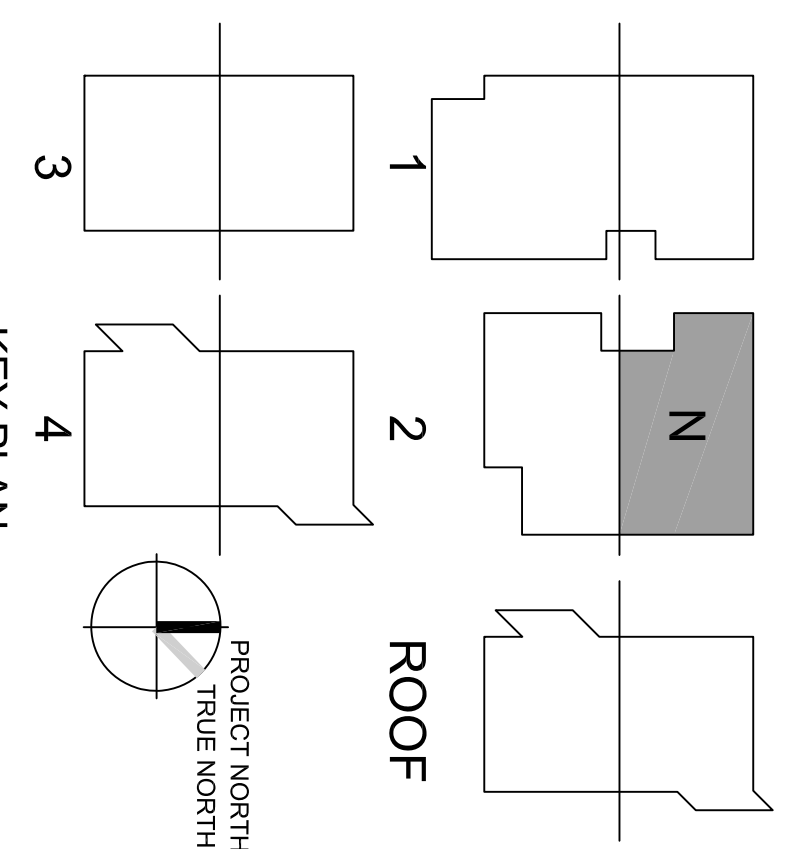


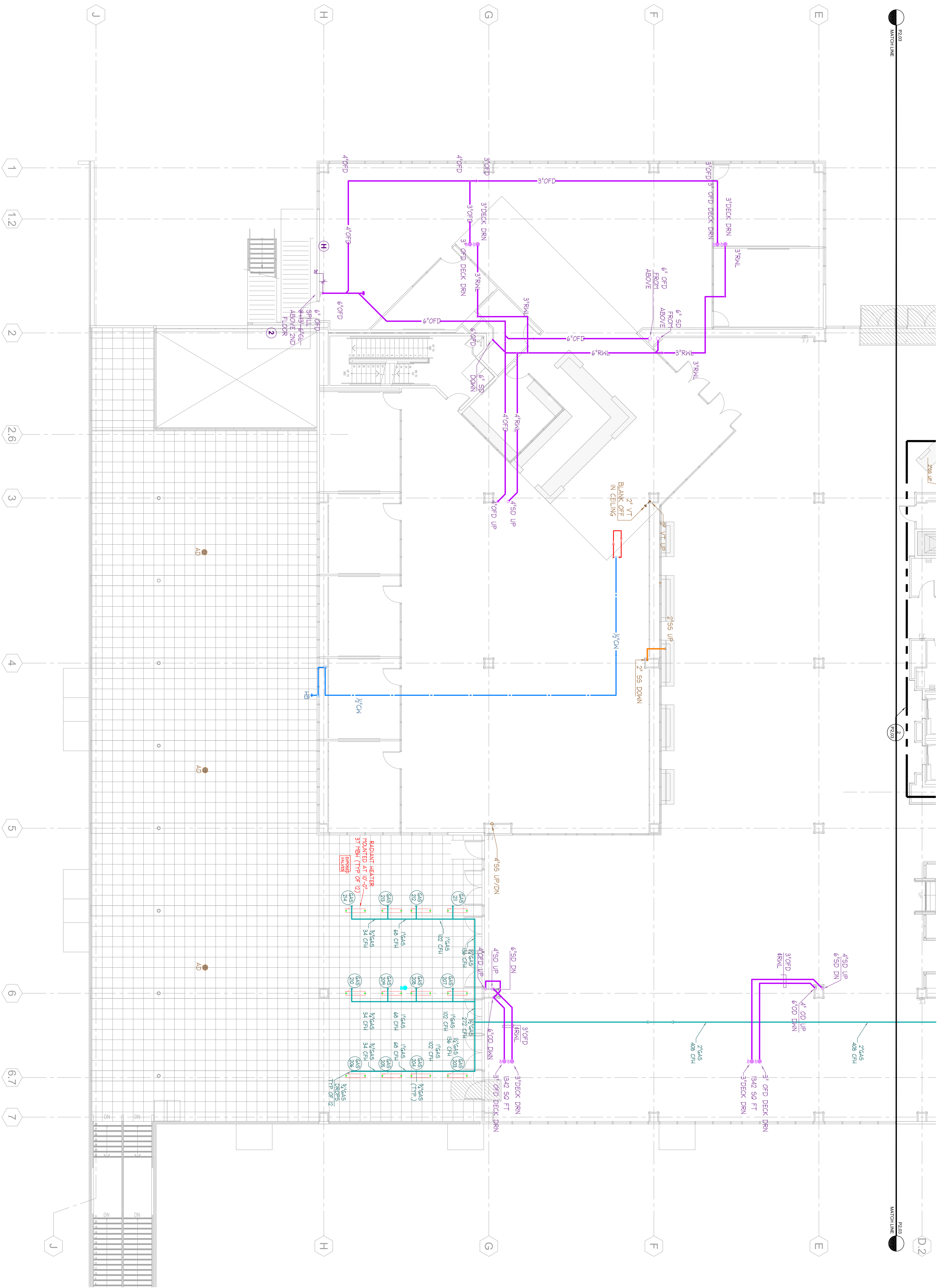
1 Plumbing Plan - Level 2 North
 P2.03 / SCALE: 1/8"=1'-0"

2 ENLARGED BATHROOM PLAN
 P2.03 / SCALE: 1/4"=1'-0"



J.W. McCLELLANHAN CO.
 2001 PALM AVE
 SAN LITO, CA 94032
 TEL: (650) 345-5888
 FAX: (650) 345-5888
RECORD DOCUMENT
 DATE: October 15, 2010

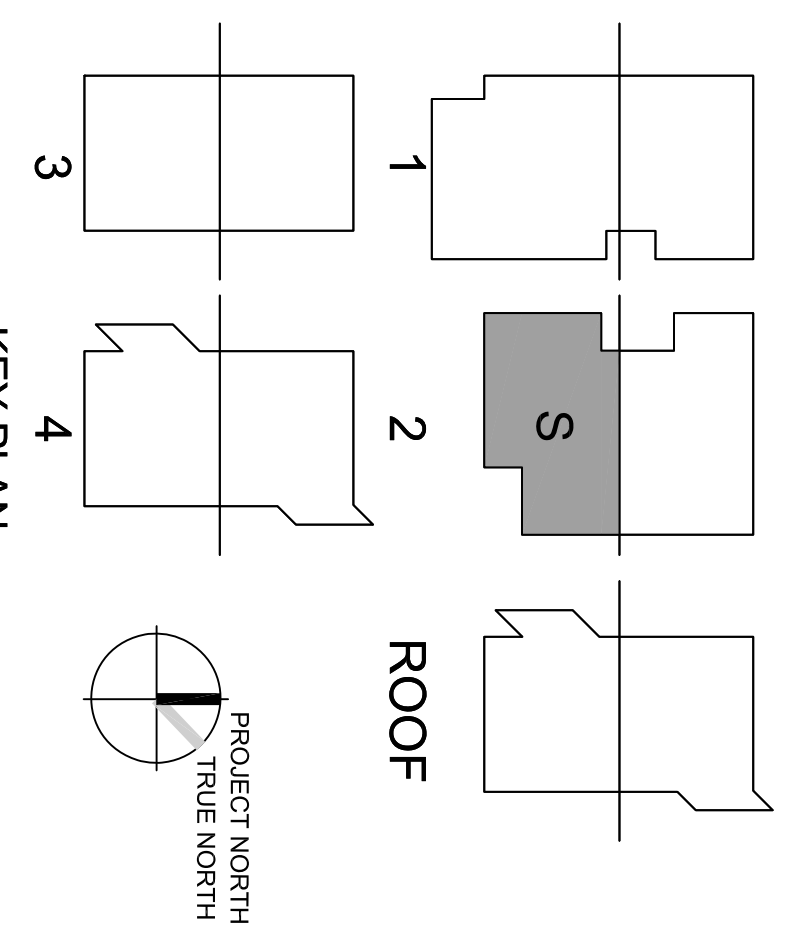




1 Plumbing Plan - Level 2 South
 P2.04 SCALE: 1/8"=1'-0"

J.W. McCLENNAHAN CO.
 2727 DUBLIN WAY, SUITE 200
 DUBLIN, CA 94568
 TEL: (925) 835-1000
 FAX: (925) 835-1001
 WWW.MCCLENNAHAN.COM

RECORD DOCUMENT
 DATE: October 15, 2010

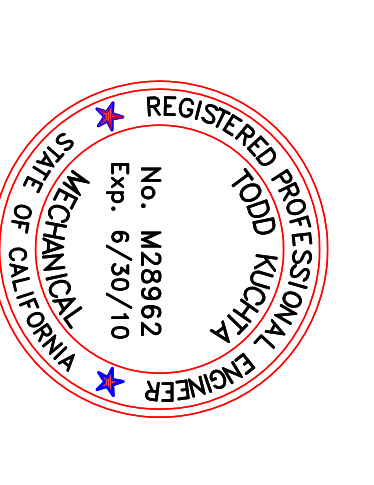
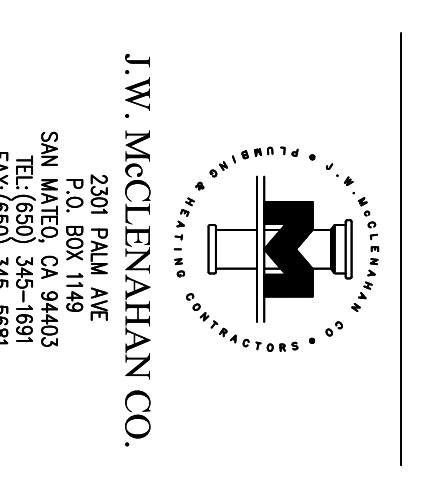


Revision Description	Date
100% Design Development	06/04/08
50% Construction Documents	07/18/08
95% Construction Documents	12/28/08
DSA Final	11/11/09

Revision Description	Date

College of San Mateo Building 10N
 San Mateo, CA
 Developed for
 San Mateo County Community College District

J.W. McCLENNAHAN CO.
 2727 DUBLIN WAY
 SAN LEANDE, CA 94583
 TEL: (925) 835-1000
 FAX: (925) 835-1001



DATE	FILE NUMBER

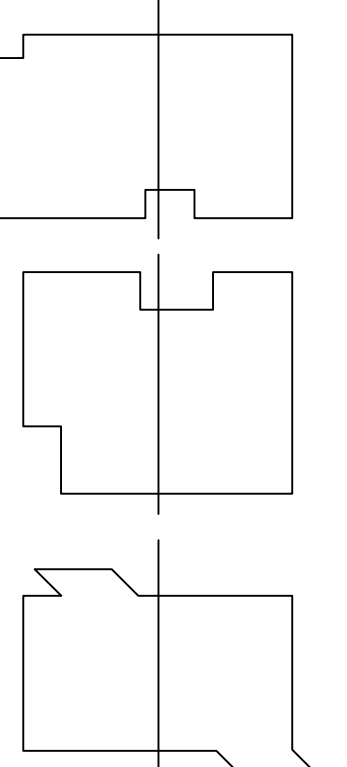
McCarthy Building Companies, Inc.
 343 Serrano Ave., Suite 144
 San Francisco, California 94104
 P 415 397-5151
 F 415 397-5999





J.W. McCLENNAHAN CO.
 REGISTERED PROFESSIONAL ENGINEER
 MECHANICAL
 STATE OF CALIFORNIA
 No. M28952
 Exp. 6/30/10
 APRIL # 01-10095
 FILE NUMBER: 41-C1

RECORD DOCUMENT
 DATE October 15, 2010



ROOF

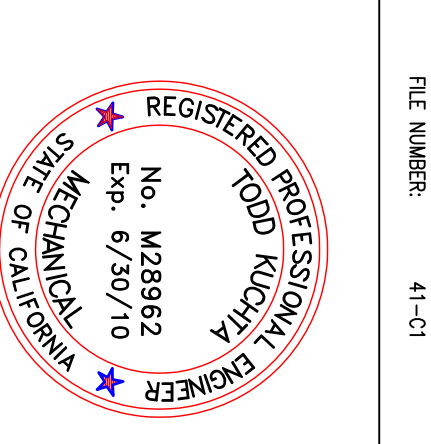
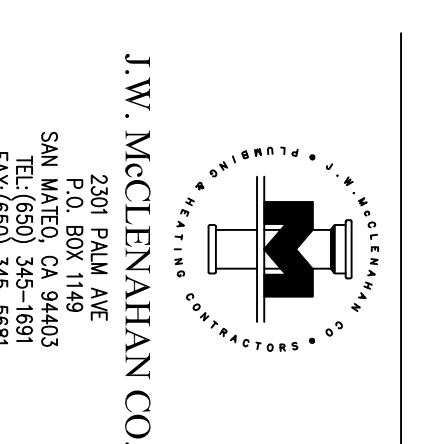
PROJECT NORTH
 TRUE NORTH

Revision Description	Date
100% Design Development	06/01/08
50% Construction Documents	07/18/08
95% Construction Documents	08/14/08
95% Construction Documents	12/08/08
DSA Final	03/11/09

Revision Description	Date

**College of San Mateo
 Building 10N**
 San Mateo, CA
 Developed for
 San Mateo County Community College District

J.W. McCLENNAHAN CO.
 2001 PALM AVE
 SAN MATEO, CA 94403
 TEL (650) 345-5888
 FAX (650) 345-5888



DATE	FILE NUMBER

McCarthy Building Companies, Inc.
 343 Francisco Street, 14th Floor
 San Francisco, California 94104
 P 415 397-5151
 F 415 397-5999



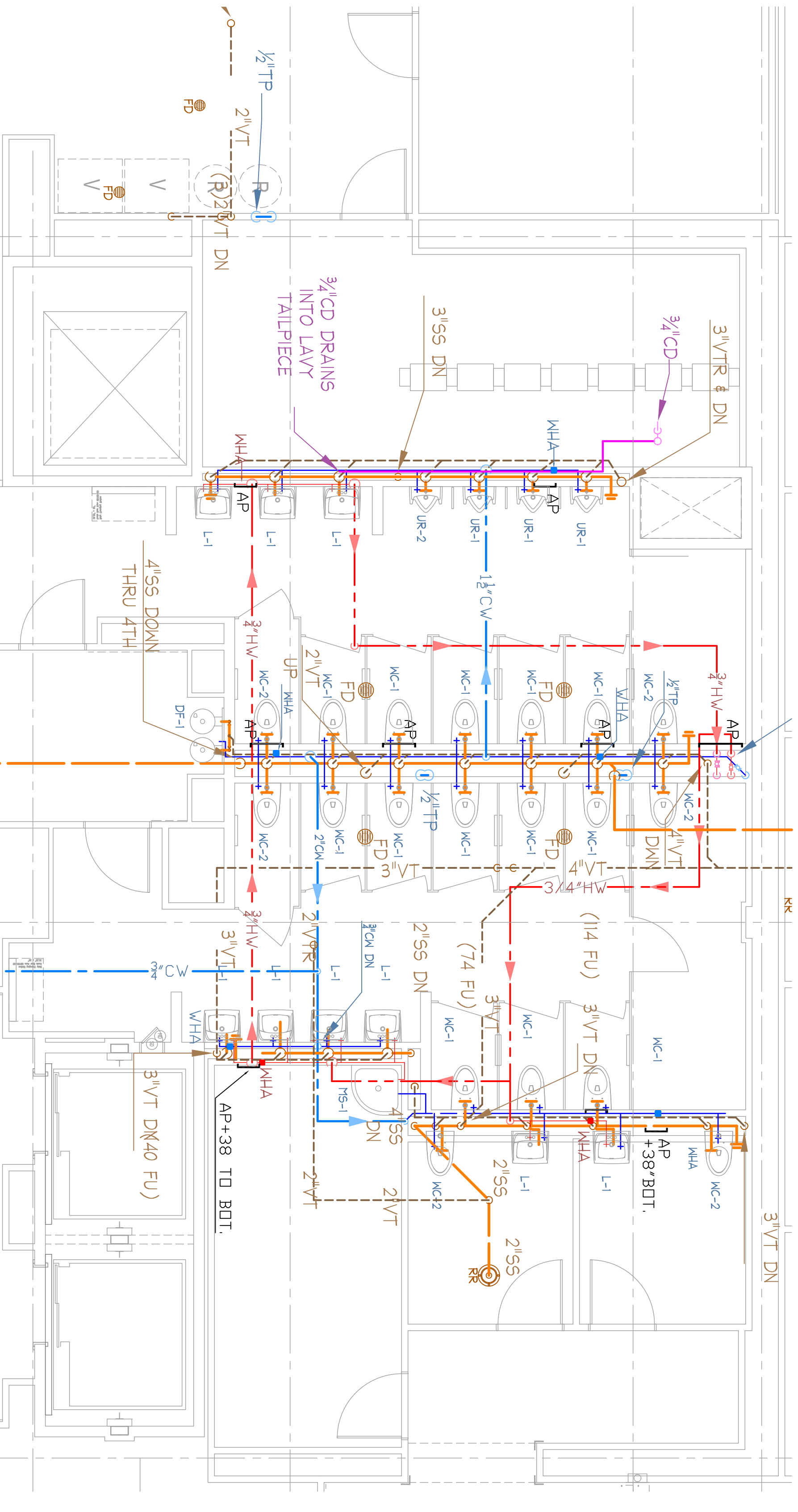
1 Plumbing Plan - Level 3 South
 SCALE: 1/8"=1'-0"

P2.06
 PLUMBING PLAN
 THIRD FLOOR (S)



1 Plumbing Plan - Level 4 North
 P2.07 SCALE: 1/8"=1'-0"

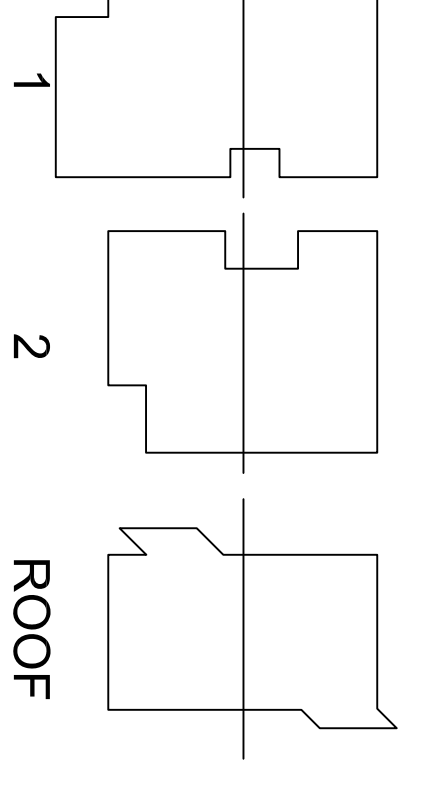
2 ENLARGED BATHROOM PLAN
 P2.07 SCALE: 1/4"=1'-0"



J.W. McCLENNAHAN CO.
 2001 PALM AVE
 SAN MATEO, CA 94403
 TEL: (650) 254-5888
 FAX: (650) 254-5889

505 MARILLA WAY
 SHERMAN, WA 98149
 TEL: (206) 511-4200
 FAX: (206) 511-4202

RECORD DOCUMENT
 DATE: October 15, 2010



Revision	Description	Date
100%	Design Development	06/01/08
50%	Construction Documents	07/01/08
95%	Construction Documents	03/01/09
95%	Construction Documents	12/08/08
95%	Construction Documents	03/11/09

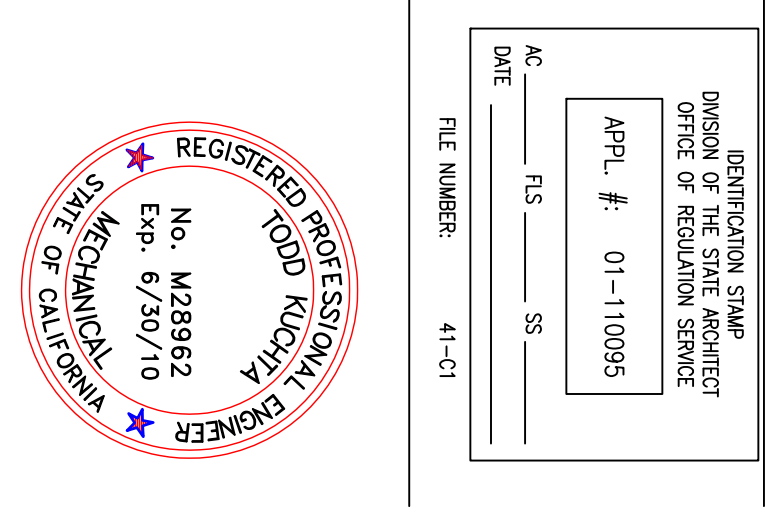
Revision	Description	Date

College of San Mateo Building 10N

San Mateo, CA

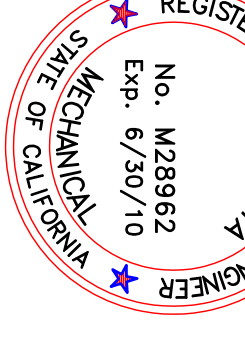
Developed for
 San Mateo County Community College District

J.W. McCLENNAHAN CO.
 2001 PALM AVE
 SAN MATEO, CA 94403
 TEL: (650) 254-5888
 FAX: (650) 254-5889



McCarthy Building Companies, Inc.
 343 Serrano Street, 14th Floor
 San Francisco, California 94104
 P 415 397-5151
 F 415 397-5999





J.W. McCLELLAN CO.
2001 PALM AVE
SAN LUIS OBISPO, CA 94943
TEL (805) 345-5988
FAX (805) 345-5988

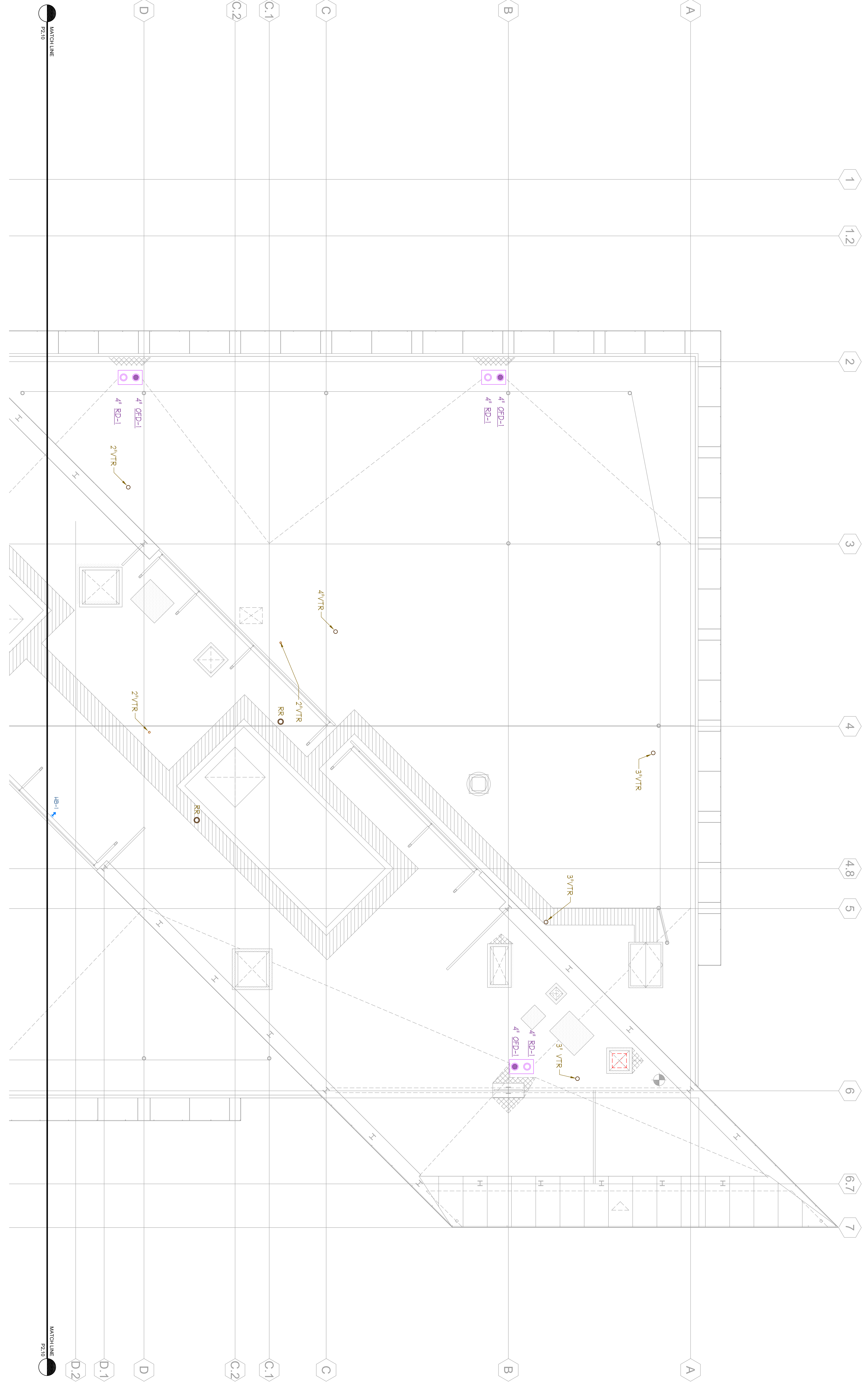
The seal of this professional engineer shall not be used for any engineering or architectural work unless the holder of the seal is duly licensed and the work is within the scope of his or her license. The seal shall not be used for any other purpose. The seal shall not be used for any work that is not within the scope of the holder's license. The seal shall not be used for any work that is not within the scope of the holder's license. The seal shall not be used for any work that is not within the scope of the holder's license.

College of San Mateo Building 10N
San Mateo, CA
Developed for
San Mateo County Community College District

Revision	Description	Date

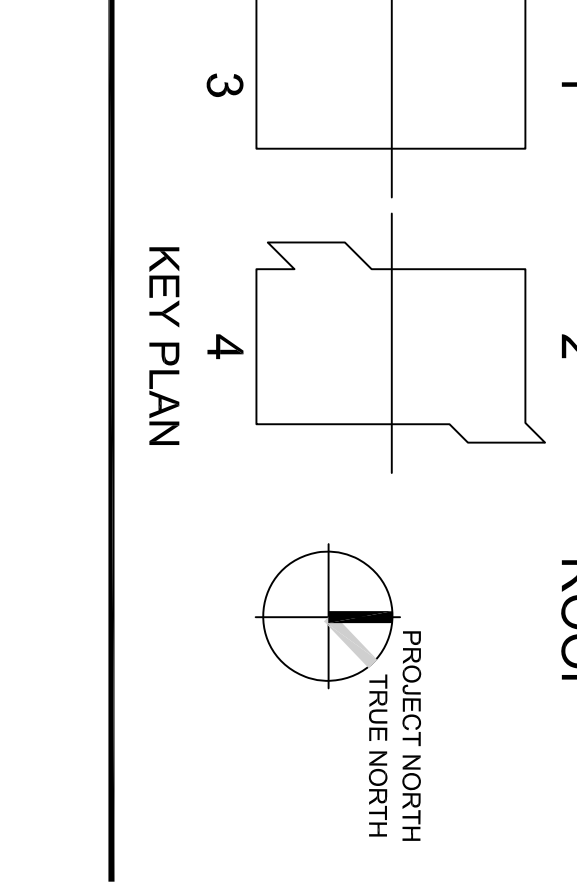
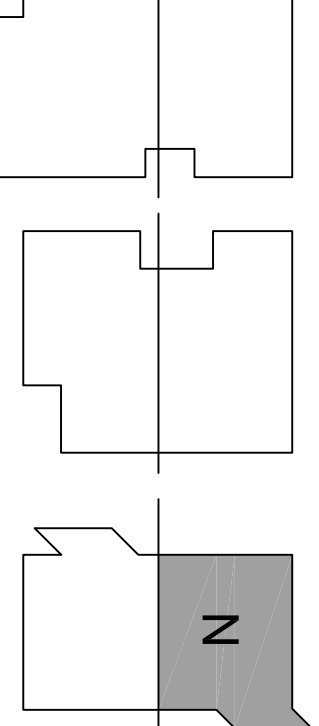
Revision	Description	Date
06/01/08	100% Design Development	06/01/08
07/18/08	50% Construction Documents	07/18/08
08/18/08	95% Construction Documents	08/18/08
12/08/08	95% Construction Documents	12/08/08
03/11/09	DSA Final	03/11/09

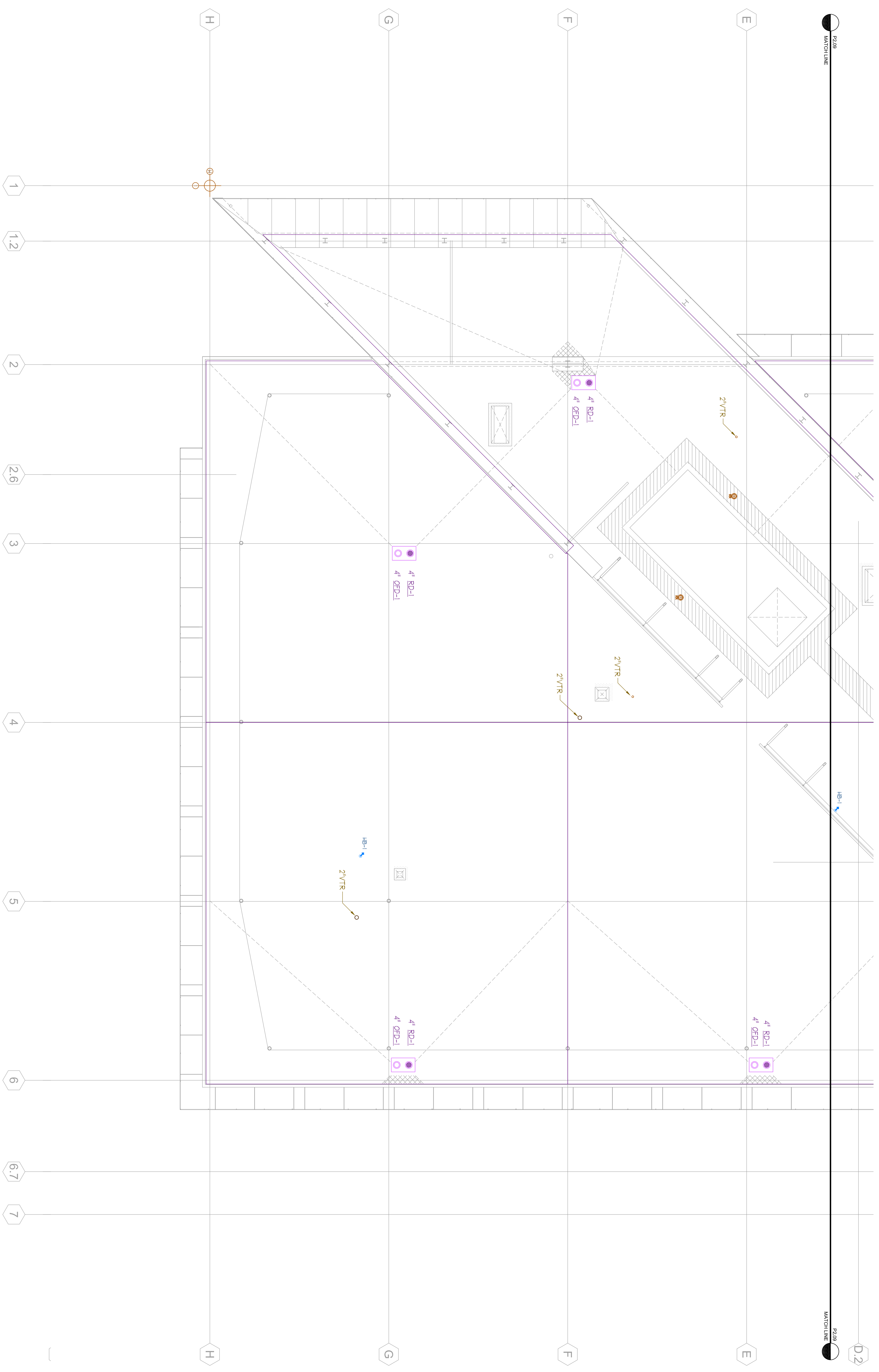
Job No.	2708/231
Date	March 2009
Drawn by	SCD
Checked by	TK
Scale	1/8" = 1'-0"
PLUMBING PLAN	
ROOF (N)	
P2.09	



1 Plumbing Plan - Roof Level North
SCALE: 1/8"=1'-0"

J.W. McCLELLAN CO.
2001 PALM AVE
SAN LUIS OBISPO, CA 94943
TEL (805) 345-5988
FAX (805) 345-5988
DATE: October 15, 2010

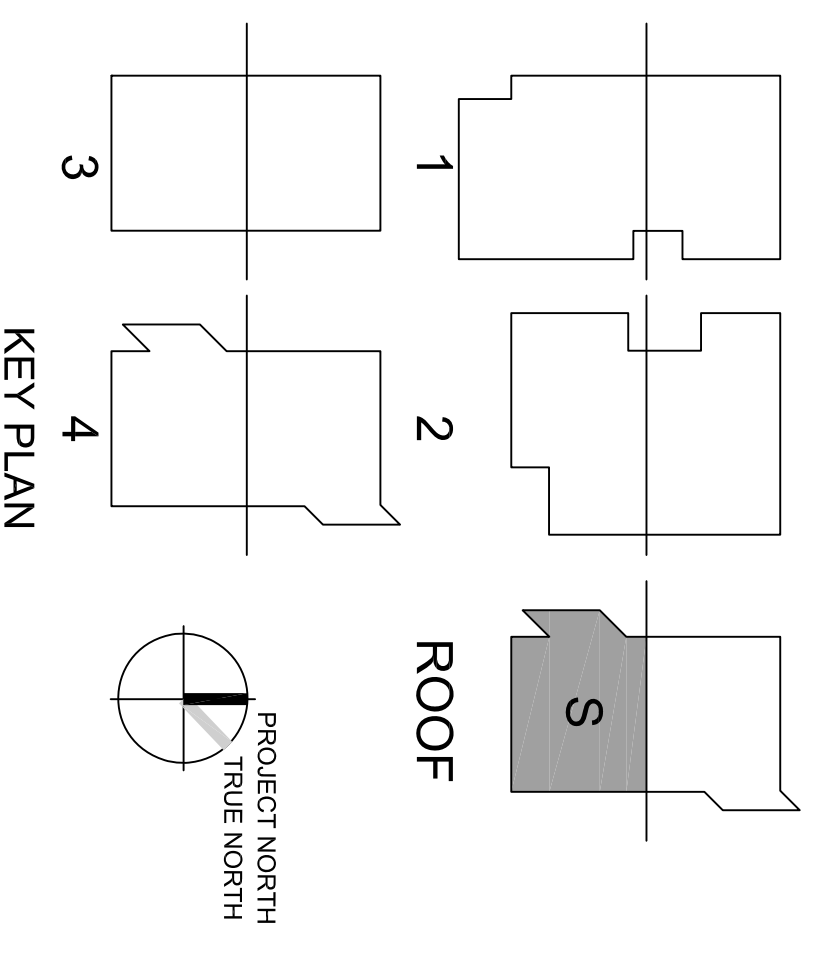




1 Plumbing Plan - Roof Level South
P2.10 SCALE: 1/8"=1'-0"

J.W. McCLENAHAN CO.
 2001 PALM AVE
 SAN MATEO, CA 94403
 TEL: (650) 345-5888
 FAX: (650) 345-5889

RECORD DOCUMENT
 DATE: October 15, 2010



Revision	Description	Date
1	100% Design Development	06/05/08
2	50% Construction Documents	07/05/08
3	95% Construction Documents	08/18/08
4	95% Construction Documents	12/08/08
5	DSA Final	03/11/09

**College of San Mateo
Building 10N**

San Mateo, CA

Developed for
San Mateo County Community College District

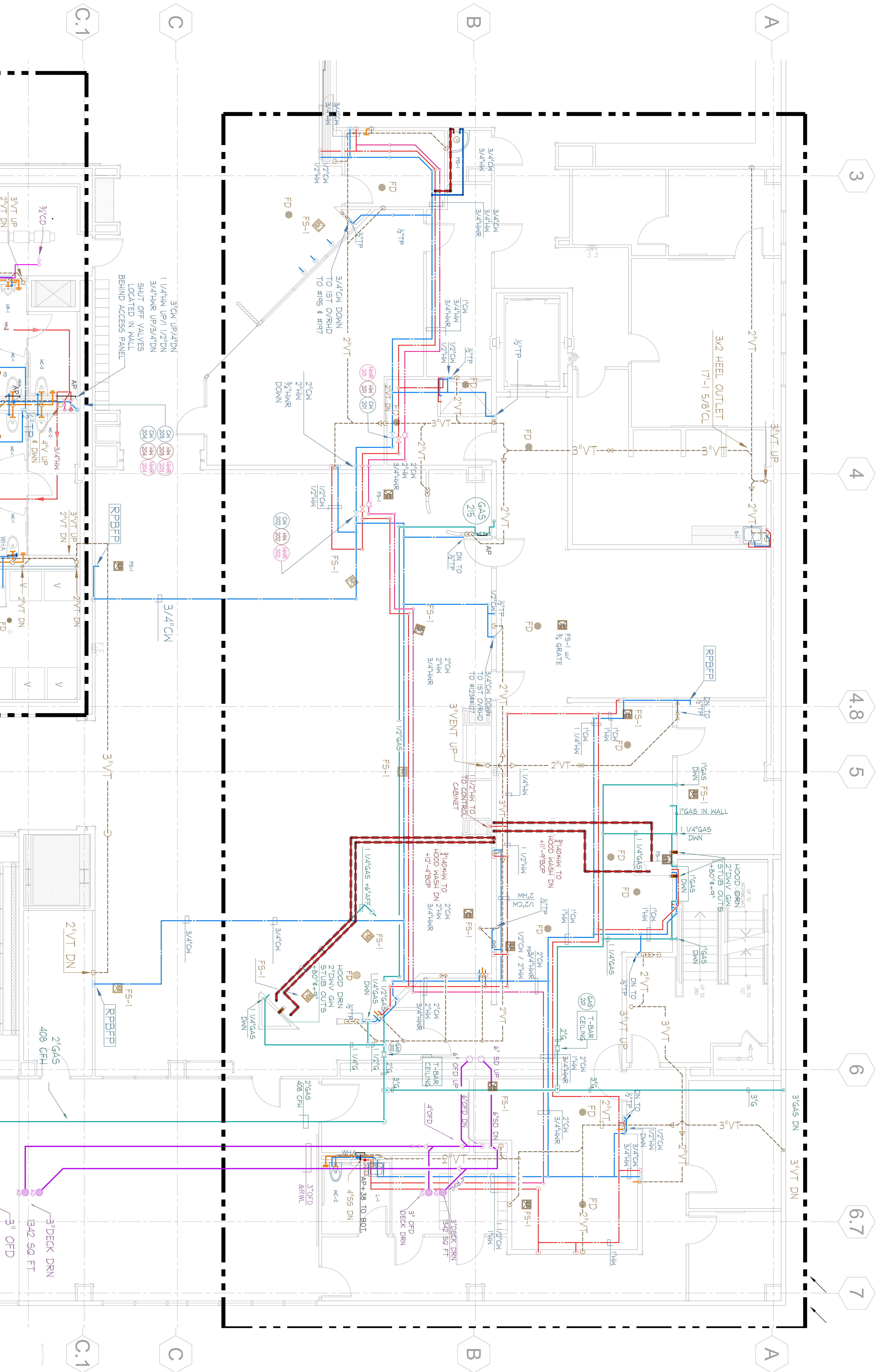
J.W. McCLENAHAN CO.
 2001 PALM AVE
 SAN MATEO, CA 94403
 TEL: (650) 345-5888
 FAX: (650) 345-5889



REGISTRATION STATE: CALIFORNIA
 DIVISION OF THE STATE ASSISTED
 OFFICE OF REGISTRATION SERVICES
 APPL. #: 01-110095
 FILE NUMBER: 41-C1

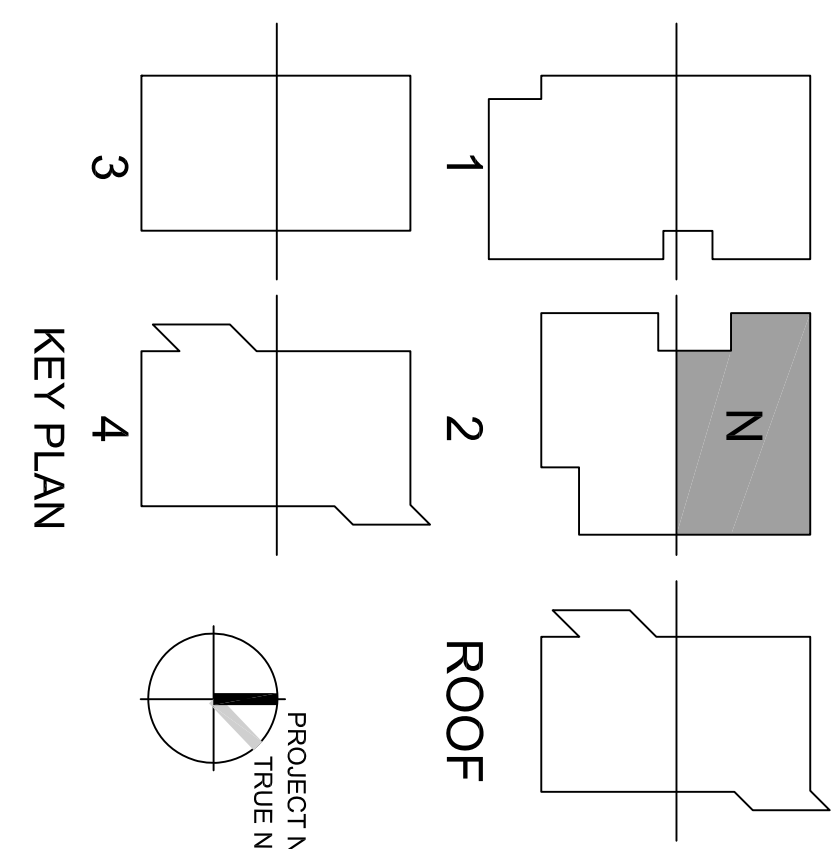
McCarthy Building Companies, Inc.
 343 Francisco Street, 14th Floor
 San Francisco, California 94104
 P 415.397.5151
 F 415.397.5999





1 Enlarged Kitchen Pressure Piping Plan
 SCALE: 1/4"=1'-0"
 P4.01

J.W. McCLENNAHAN CO.
 2250 RAY BLVD. #200
 SAN MATEO, CA 94403
 (415) 997-5151
 (415) 997-5152
 (415) 997-5153
 (415) 997-5154
 (415) 997-5155
 (415) 997-5156
 (415) 997-5157
 (415) 997-5158
 (415) 997-5159
 (415) 997-5160
 (415) 997-5161
 (415) 997-5162
 (415) 997-5163
 (415) 997-5164
 (415) 997-5165
 (415) 997-5166
 (415) 997-5167
 (415) 997-5168
 (415) 997-5169
 (415) 997-5170
 (415) 997-5171
 (415) 997-5172
 (415) 997-5173
 (415) 997-5174
 (415) 997-5175
 (415) 997-5176
 (415) 997-5177
 (415) 997-5178
 (415) 997-5179
 (415) 997-5180
 (415) 997-5181
 (415) 997-5182
 (415) 997-5183
 (415) 997-5184
 (415) 997-5185
 (415) 997-5186
 (415) 997-5187
 (415) 997-5188
 (415) 997-5189
 (415) 997-5190
 (415) 997-5191
 (415) 997-5192
 (415) 997-5193
 (415) 997-5194
 (415) 997-5195
 (415) 997-5196
 (415) 997-5197
 (415) 997-5198
 (415) 997-5199
 (415) 997-5200



ROOF
 PROJECT NORTH
 TRUE NORTH

Revision	Description	Date
100%	Design Development	06/30/08
95%	Construction Documents	07/01/08
90%	Construction Documents	08/14/08
85%	Construction Documents	12/08/08
80%	Construction Documents	03/11/09

Revision	Description	Date
100%	Design Development	06/30/08
95%	Construction Documents	07/01/08
90%	Construction Documents	08/14/08
85%	Construction Documents	12/08/08
80%	Construction Documents	03/11/09

College of San Mateo Building 10N
 San Mateo, CA
 Developed for
 San Mateo County Community College District

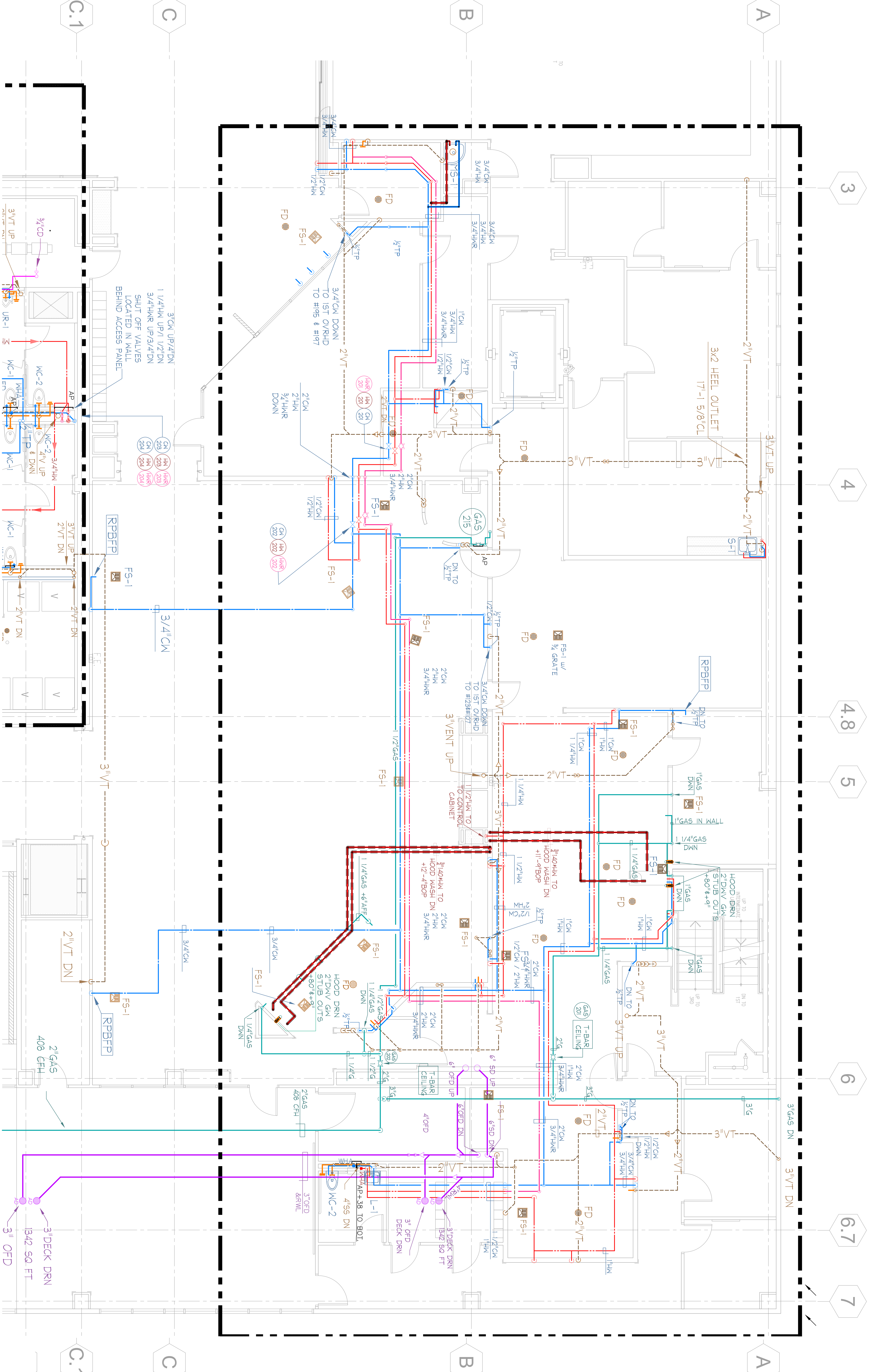
J.W. McCLENNAHAN CO.
 2250 RAY BLVD.
 SAN MATEO, CA 94403
 (415) 997-5151
 (415) 997-5152
 (415) 997-5153
 (415) 997-5154
 (415) 997-5155
 (415) 997-5156
 (415) 997-5157
 (415) 997-5158
 (415) 997-5159
 (415) 997-5160
 (415) 997-5161
 (415) 997-5162
 (415) 997-5163
 (415) 997-5164
 (415) 997-5165
 (415) 997-5166
 (415) 997-5167
 (415) 997-5168
 (415) 997-5169
 (415) 997-5170
 (415) 997-5171
 (415) 997-5172
 (415) 997-5173
 (415) 997-5174
 (415) 997-5175
 (415) 997-5176
 (415) 997-5177
 (415) 997-5178
 (415) 997-5179
 (415) 997-5180
 (415) 997-5181
 (415) 997-5182
 (415) 997-5183
 (415) 997-5184
 (415) 997-5185
 (415) 997-5186
 (415) 997-5187
 (415) 997-5188
 (415) 997-5189
 (415) 997-5190
 (415) 997-5191
 (415) 997-5192
 (415) 997-5193
 (415) 997-5194
 (415) 997-5195
 (415) 997-5196
 (415) 997-5197
 (415) 997-5198
 (415) 997-5199
 (415) 997-5200

REGISTERED PROFESSIONAL ENGINEER
 No. M28982
 Exp. 6/30/10
 MECHANICAL
 STATE OF CALIFORNIA

J.W. McCLENNAHAN CO.
 2250 RAY BLVD.
 SAN MATEO, CA 94403
 (415) 997-5151
 (415) 997-5152
 (415) 997-5153
 (415) 997-5154
 (415) 997-5155
 (415) 997-5156
 (415) 997-5157
 (415) 997-5158
 (415) 997-5159
 (415) 997-5160
 (415) 997-5161
 (415) 997-5162
 (415) 997-5163
 (415) 997-5164
 (415) 997-5165
 (415) 997-5166
 (415) 997-5167
 (415) 997-5168
 (415) 997-5169
 (415) 997-5170
 (415) 997-5171
 (415) 997-5172
 (415) 997-5173
 (415) 997-5174
 (415) 997-5175
 (415) 997-5176
 (415) 997-5177
 (415) 997-5178
 (415) 997-5179
 (415) 997-5180
 (415) 997-5181
 (415) 997-5182
 (415) 997-5183
 (415) 997-5184
 (415) 997-5185
 (415) 997-5186
 (415) 997-5187
 (415) 997-5188
 (415) 997-5189
 (415) 997-5190
 (415) 997-5191
 (415) 997-5192
 (415) 997-5193
 (415) 997-5194
 (415) 997-5195
 (415) 997-5196
 (415) 997-5197
 (415) 997-5198
 (415) 997-5199
 (415) 997-5200

McCarthy Building Companies, Inc.
 343 Serrano Ave., Suite 1410
 San Francisco, California 94104
 P 415 397-5151
 F 415 397-5999

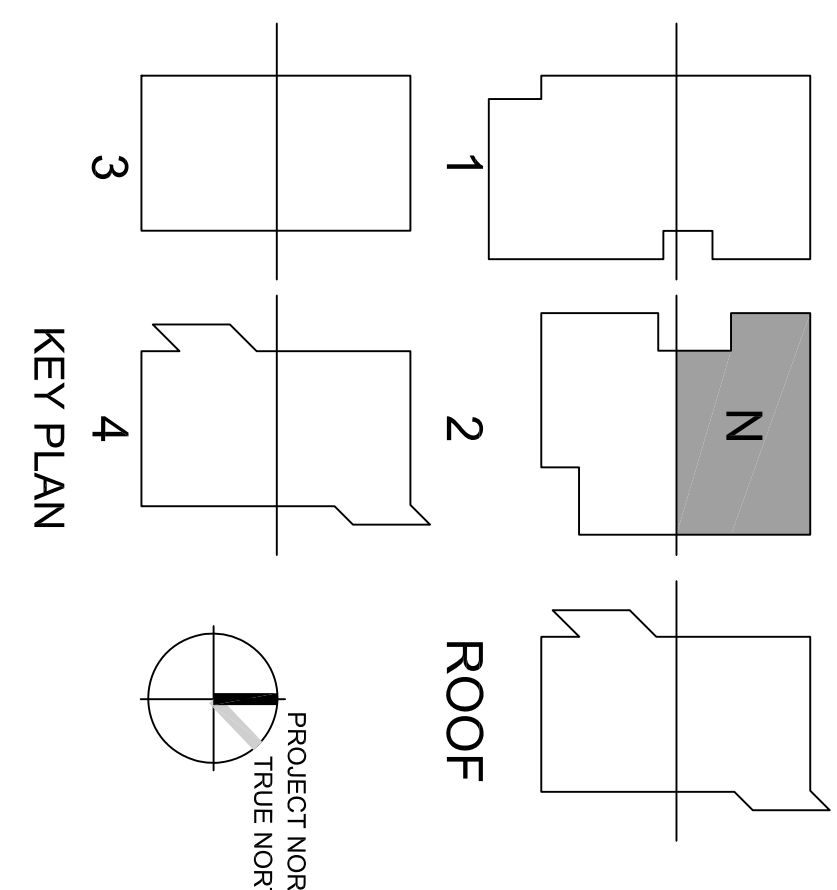




1 Enlarged Kitchen DWV Piping Plan
SCALE: 1/4"=1'-0"

J.W. McCLENNAHAN CO.
 2201 PALM AVE
 SAN LUIS OBISPO, CA 94963
 TEL: (805) 342-4800
 FAX: (805) 342-4801

RECORD DOCUMENT
 DATE: October 15, 2010



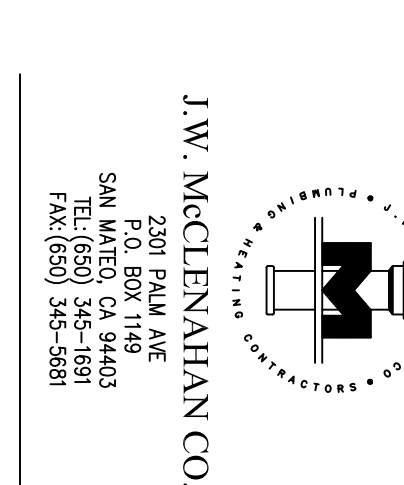
Revision	Description	Date
100%	Design Development	06/30/08
50%	Construction Documents	07/01/09
95%	Construction Documents	12/08/08
100%	Construction Documents	03/11/09

**College of San Mateo
Building 10N**

San Mateo, CA

Developed for
San Mateo County Community College District

J.W. McCLENNAHAN CO.
 2201 PALM AVE
 SAN LUIS OBISPO, CA 94963
 TEL: (805) 342-4800
 FAX: (805) 342-4801

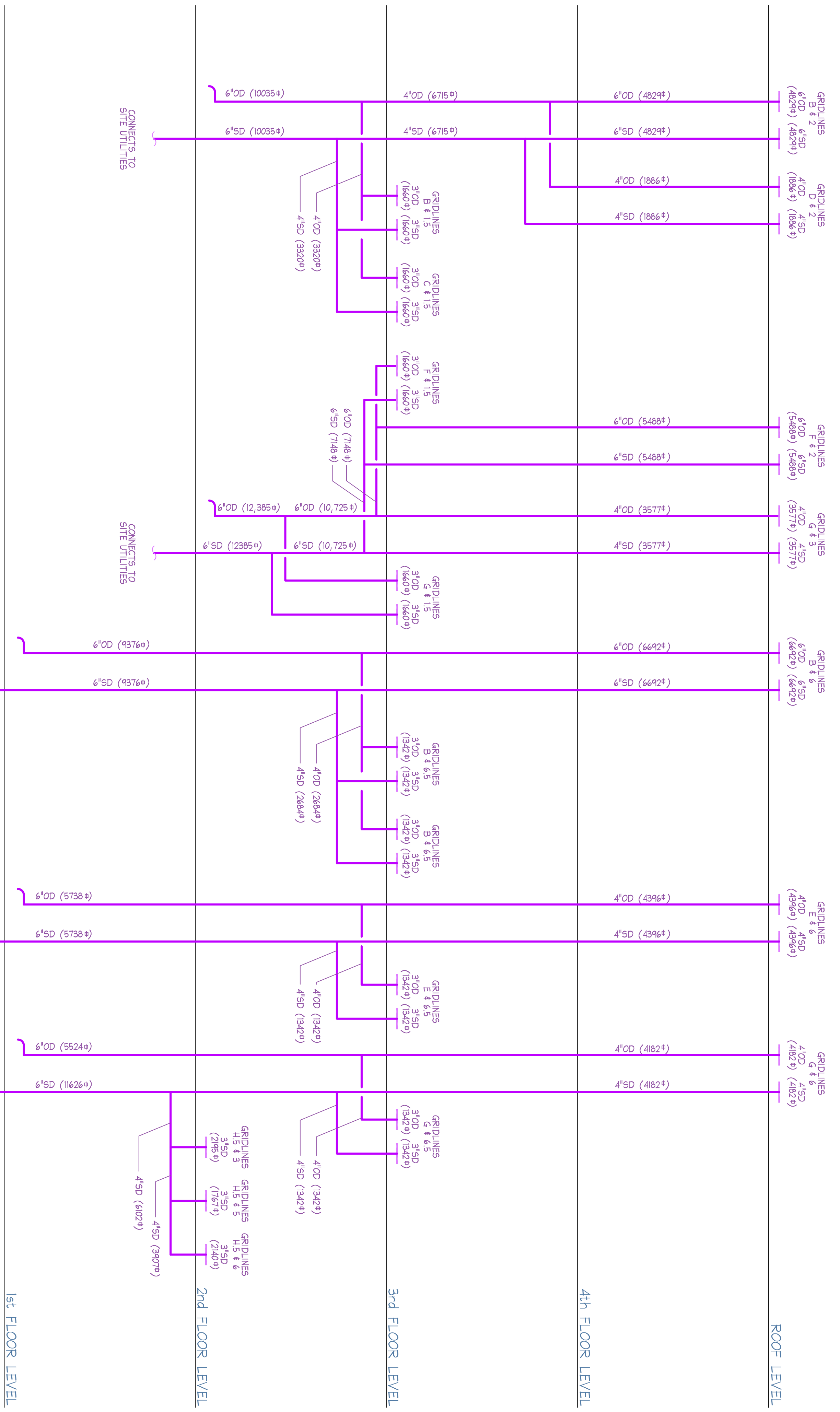


Revision	Description	Date
100%	Design Development	06/30/08
50%	Construction Documents	07/01/09
95%	Construction Documents	12/08/08
100%	Construction Documents	03/11/09

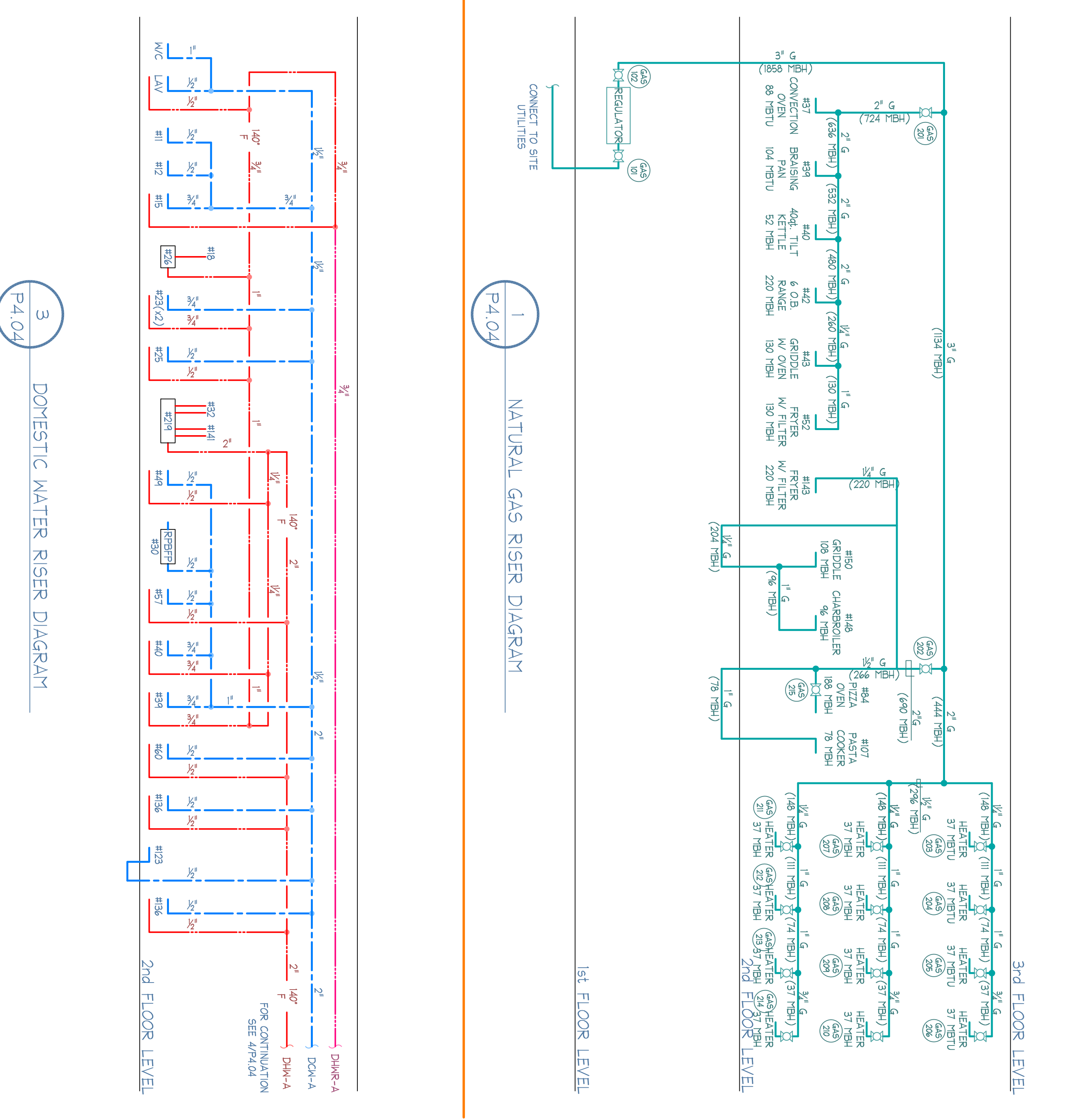
McCarthy Building Companies, Inc.
 343 Serrano Ave., Suite 1410
 San Francisco, California 94104
 P 415 397-5151
 F 415 397-5999

LPA KH

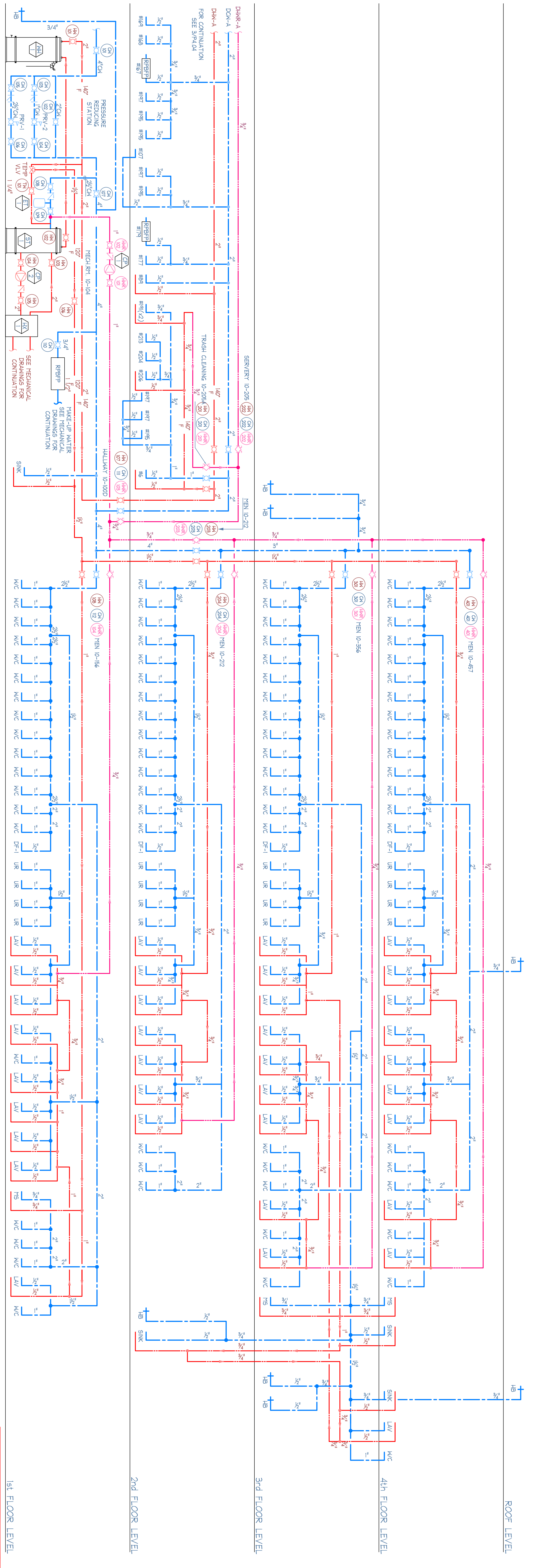
MCCARTHY



2 STORM AND OVERFLOW DRAIN RISER DIAGRAM



3 DOMESTIC WATER RISER DIAGRAM



4 DOMESTIC WATER RISER DIAGRAM

J.W. McCLENNAHAN CO.
 2001 PALM AVE
 SAN MATEO, CA 94403
 (415) 352-5888
 FAX (415) 352-5889

RECORD DOCUMENT
 DATE: October 15, 2010

Revision	Description	Date
06/10/08	100% Design Development	06/10/08
07/16/08	95% Construction Documents	07/16/08
08/14/08	90% Construction Documents	08/14/08
12/08/08	95% Construction Documents	12/08/08
03/11/09	DSA Final	03/11/09

Revision	Description	Date

Revision	Description	Date

College of San Mateo Building 10N

San Mateo, CA

Developed for
 San Mateo County Community College District

J.W. McCLENNAHAN CO.
 2001 PALM AVE
 SAN MATEO, CA 94403
 (415) 352-5888
 FAX (415) 352-5889

REGISTERED PROFESSIONAL ENGINEER
 No. M28982
 Exp. 6/30/10
 STATE OF CALIFORNIA
 MECHANICAL

ENGINEERING STAMP
 DIVISION OF THE STATE ASSISTANT
 ENGINEER
 OFFICE OF REGISTRATION SERVICES
 APPL. # 01-110095
 FILE NUMBER: 41-C1

McCarthy Building Companies, Inc.
 343 Serrano Ave., Suite 144
 San Francisco, California 94104
 P 415 397-5151
 F 415 397-5999

LPA KH

McCarthy

Revision	Description	Date
08	100% Design Development	08/07/09
09	95% Construction Documents	09/02/09
10	90% Construction Documents	09/28/09
11	DSA Final	11/10/09

Revision	Description	Date
01	100% Design Development	08/07/09
02	95% Construction Documents	09/02/09
03	90% Construction Documents	09/28/09
04	DSA Final	11/10/09

Job No.	Date
2782827	08/07/09
AM07 0009	09/02/09
SC0	09/28/09
TKR	11/10/09

Checked by: TKR
 Scale: NRC

J.W. McCLENNAN CO.
 2201 PALM AVE
 SAN LUIS OBISPO, CA 94943
 SAN LUIS OBISPO, CA 94943
 FAX (805) 345-5989

RECORD DOCUMENT
 DATE: OCTOBER 15, 2010

Plumbing Details
 P9.01

