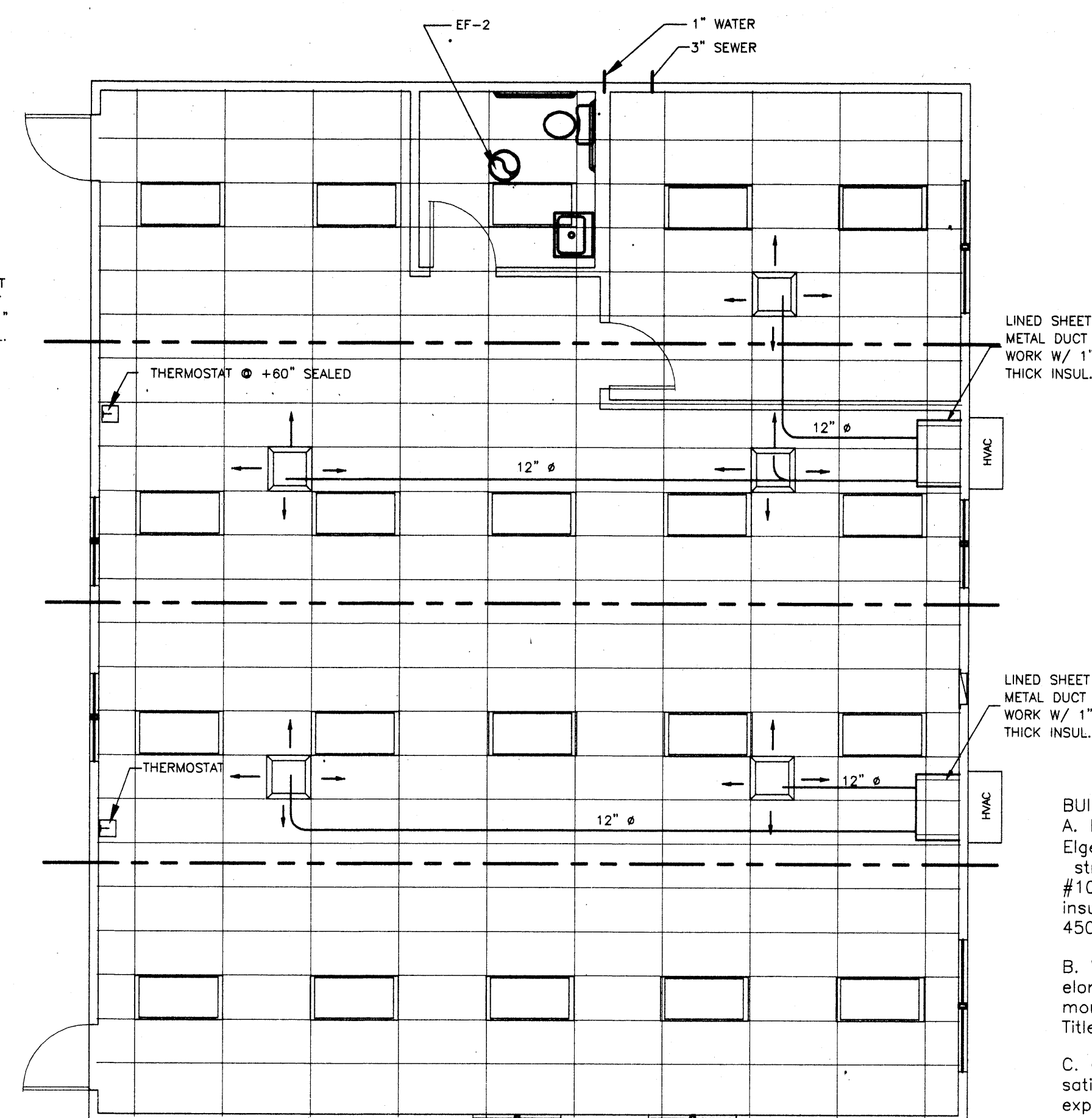


HEAT/SUPPLY AIR DUCT LAYOUT #924

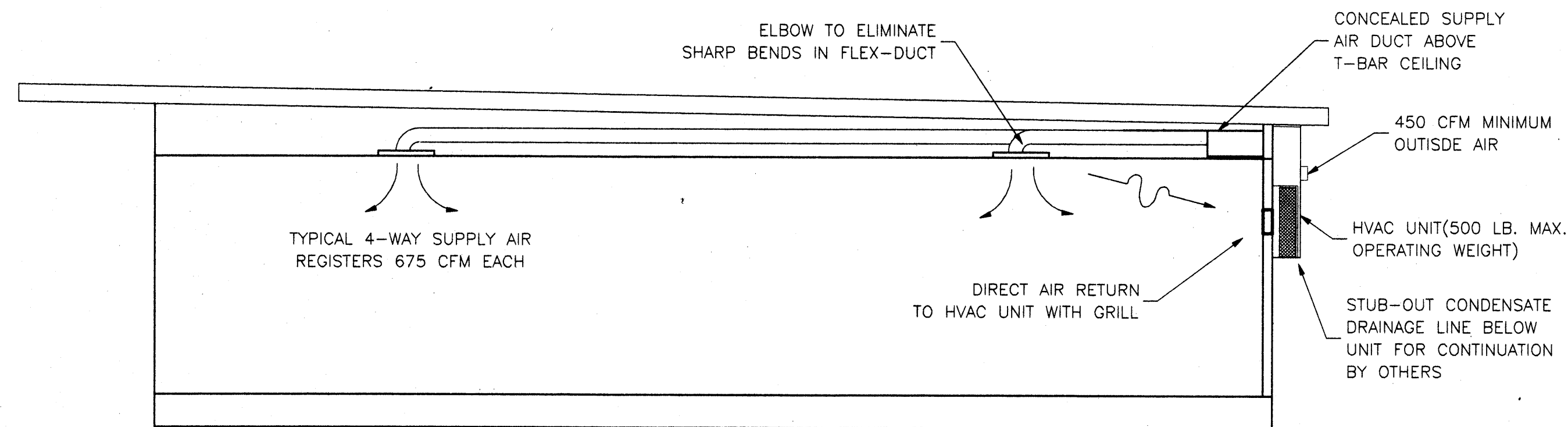
SCALE: 3/16"=1'-0"



HEAT/SUPPLY AIR DUCT LAYOUT #925

SCALE: 3/16"=1'-0"

NOTE: #926 MIRROR OF #925



HEAT/SUPPLY AIR DUCT CROSS SECTION

SCALE: 1/4"=1'-0"

- BUILDING FIXTURES, EQUIPMENT, & APPLIANCE SPECIFICATIONS**
- A. L - Lavatory, Eijer 051-2104.
Eijer 557-1012 faucet with lever handles, Eijer 760-strainer 1/2"x3/8" tubing angle supplies Chicago faucet #1017; 17 ga. chrome plated p-trap with clean out and insulated w/6 maximum flame spread of 25 & smoke density of 450.
- B. WC - Water closets, shall be water saver tank type elongated bowl with open front toilet seat and shall be mounted as specified on floor plan and in compliance with Title 24. Provide three handicapped adult WC1: Eijer 091-1175.
- C. Grab Bars - 1-1/4" Diameter, 18 ga., 304 stainless steel, satin finish, 1-1/2" stand off from wall, concealed or exposed mounting. Structural strength of grab bars (250# min.), mounting length (see floor plan), and configuration shall be as required by Title 24, section 2-411.C.
- D. Toilet Room Mirrors - Bobrick B165 or equal, 18x30 stainless steel channel framed, mounted above each toilet room sink at +40" max.
- E. Sewer And Water Stub Outs - shall be located within the allowable area as shown on floor plan and connections should be easily accessible for future relocation. Stub out height should be coordinated by the manufacturer.
- F. Piping - Water, copper type "L", 95/5 solder. Waste, drain and vent ABS.
- H. Office Sink - Republic 25X22 stainless steel, with T&S 1142 faucet w/wrist blade handles, and HAWS 5055 bubbler.

EXHAUST FAN					
MARK	DESCRIPTION	CFM	WATTS	S.P.	VOLT/PH
EF-1	EXHAUST FAN	110	1050	.10"	115-16
EF-2	"	"	"	"	"
EF-3	"	"	"	"	"

NUTONE 672
CEILING MOUNTED
180W INPUT

DUCT SUPPORT
Flex duct to be supported with 1-1/2" wide x 26 ga. galv. strap @ max 6'-0" o.c. Attach to rafter W/2 #8 SMS @ each end.
Supply air plenum to be supported with 1-1/2" wide x 26 ga. galv. straps min. 2 per plenum.
Supply air box and diffusers to be supported with (2) 12 ga. hanger wires to box @ opposite corners.
Supply air box and diffusers to be braced with (2) 12 ga. slack wires to box @ opposite corners. Attach supply air diffusers to ceiling grid to resist a lateral load equal to the weight of the diffuser and supply air box W/2 #8 SMS.

THESE DRAWINGS COMPLY WITH THE ENERGY CONSERVATION REQUIREMENTS OF TITLE 24 OF THE STATE OF CALIFORNIA

GENERAL NOTES
HEATING VENTILATING AND AIR CONDITIONING (HVAC)
1. Heat Pump: Single package wall mounted air to air electric heat pump unit shall be rated in accordance with ARI Standard 240-77.
Reference Brands: BARD WH42A-XXXXXX
MARVAIR AVP 42 HPA-08S

All units shall be 230/208 volt, 1 phase system, UL tested & approved or comparable and meet current energy standards.

A.) The system shall maintain an automatically controlled indoor classroom temperature of 78 degrees F. When the outdoor dry bulb temperature varies between 100 degrees F. in the summer
B.) The system must maintain the above temperature when the damper is adjusted to use approximately one third fresh air.

2. Ductwork.
A.) Construct all ductwork of galvanized sheet metal in accordance with C.M.C., Ashrae Guide Equipment volume and Smacna Low Velocity Duct Construction manual latest editions. All ductwork shall be insulated with 1" thick fiberglass duct wrap with vapor barrier. Provide 1" duct attenuation at all ductwork within 2'0" of HVAC unit.

B.) Non-metallic ductwork option: In accessible concealed portions of duct system rigid 1" fiberglass or insulated flex-duct with vapor barrier may be substituted for sheet metal ductwork. All ductwork within 2' of the HVAC unit and all interface connections shall be metal. Ductwork and reinforcement shall be designed for 2" static pressure.
Reference Brands: Owens-Corning fiberglass ductboard, 1" thick, and Micro-air, TYPE 475.
Non-metallic ductwork shall conform to NFPA 90-A and SMACNA Class 1 rating.

3. Air duct insulation and linings shall comply with flame spread less than or equal to 25, smoke generation less than or equal to 50.
4. Supply air diffusers shall be 675 CFM max. 12" round 1" fiberglass or flexduct ductwork specifically designed to provide air thermal cooling systems. 24"x8"x1" Micro-Aire type #475 Owens-Corning, Knaflex, Certaineed, or equal and 90- B: UL #131 test, class 1 rating with "SMACNA".
5. Registers and diffusers: Provide three (Min) 4-way throw air diffusers as manufactured Carnes, Titus, Hart and Cooley, Metalaire, Shoemaker, Barber-Coleman or Krueger commercial grade grills and registers
6. Air conditioning controls.
Thermostat: Provide electronic programmable thermostat. Thermostat shall have the following functions.
A.) 5 and 2 weekday/weekend programming with 4 separate time/temperature setting for 24-hour period.
B.) Key board lockout switch.
C.) Programmable display.
D.) 2-hour override minimum.
E.) Status Indicated Led's.
F.) Battery back-up.
Provide locking clear thermostat cover with thermostat cover with access hole for program override. White Rodgers IF92. Mounted at +60" sealed typ.

7. Thermal insulation
A.) Roof Insulation: R-19 Unfaced.
B.) Walls Insulation: R-11 Kraft Faced.
C.) Floors Insulation: R-11 Kraft Faced.
Flame spread and smoke development shall conform to California Building Code sec. 707.

8. Factory-made air ducts. Factory-made air ducts shall be approved for the use intended or shall conform to the requirements of U.M.C. Standard No. 6-1. Each portion of a factory-made air duct system shall be identified by the manufacturer with a label or other suitable identification indicating compliance with U.M.C. Standard No. 6-1 and its class designation. These ducts shall be listed and shall be installed in accordance with the terms of their listing and the requirements of UMC STD. 6-1.

NOTE
STUB OUT LOCATIONS FOR WATER, WASTE AND GAS ARE DIAGRAMMATICAL ONLY. EXACT LOCATIONS MAY VARY +/- SEVERAL FEET. PLEASE CONTACT AMERICAN MODULAR SYSTEMS FOR EXACT LOCATIONS.

BASED ON PC# 02-101835



IDENTIFICATION STAMP
DIV. OF THE STATE ARCHITECT
OFFICE OF REGULATION SERVICES
02-102 939
DATE 11/01

48 X 40 PC
RELOCATABLE
CLASSROOMS

American Modular Systems

333 EAST CARNEGIE CT. MANTECA, CALIFORNIA 95337
PHONE (209) 825-1921 FAX. (209) 825-7018

CUSTOMER:
MOBILE MODULAR MANAGEMENT CORP.
#924-#926

DATE: 12-18-00
SCALE: NONE
DRAWN BY: M.H.
CHECKED BY:
CHECKED BY:
SERIAL NO.

MECHANICAL PLAN & NOTES

REVISIONS					
NO	DATE	DESCRIPTION	NO	DATE	DESCRIPTION

PROJECT No.
SHEET No.
M 1