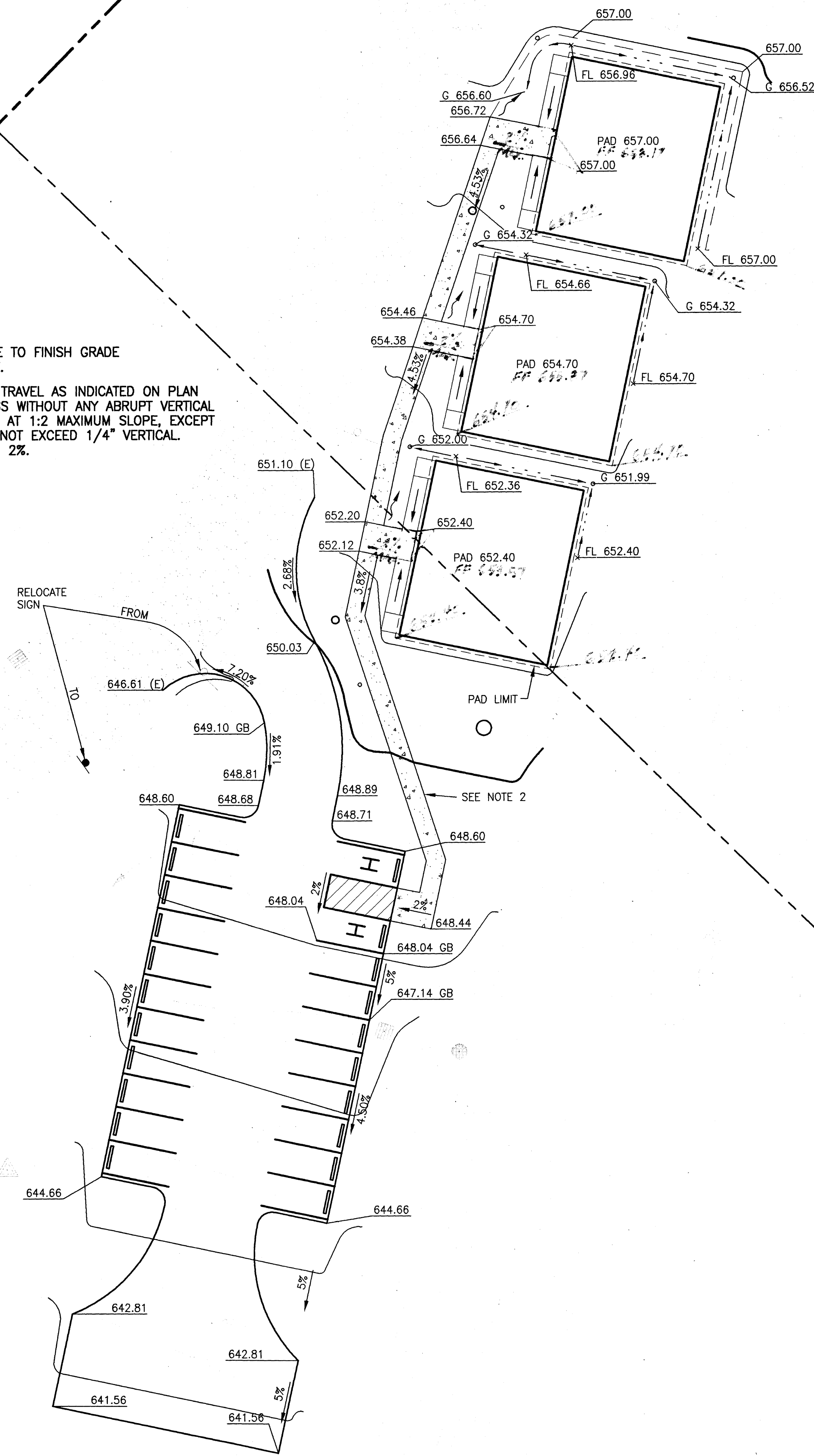
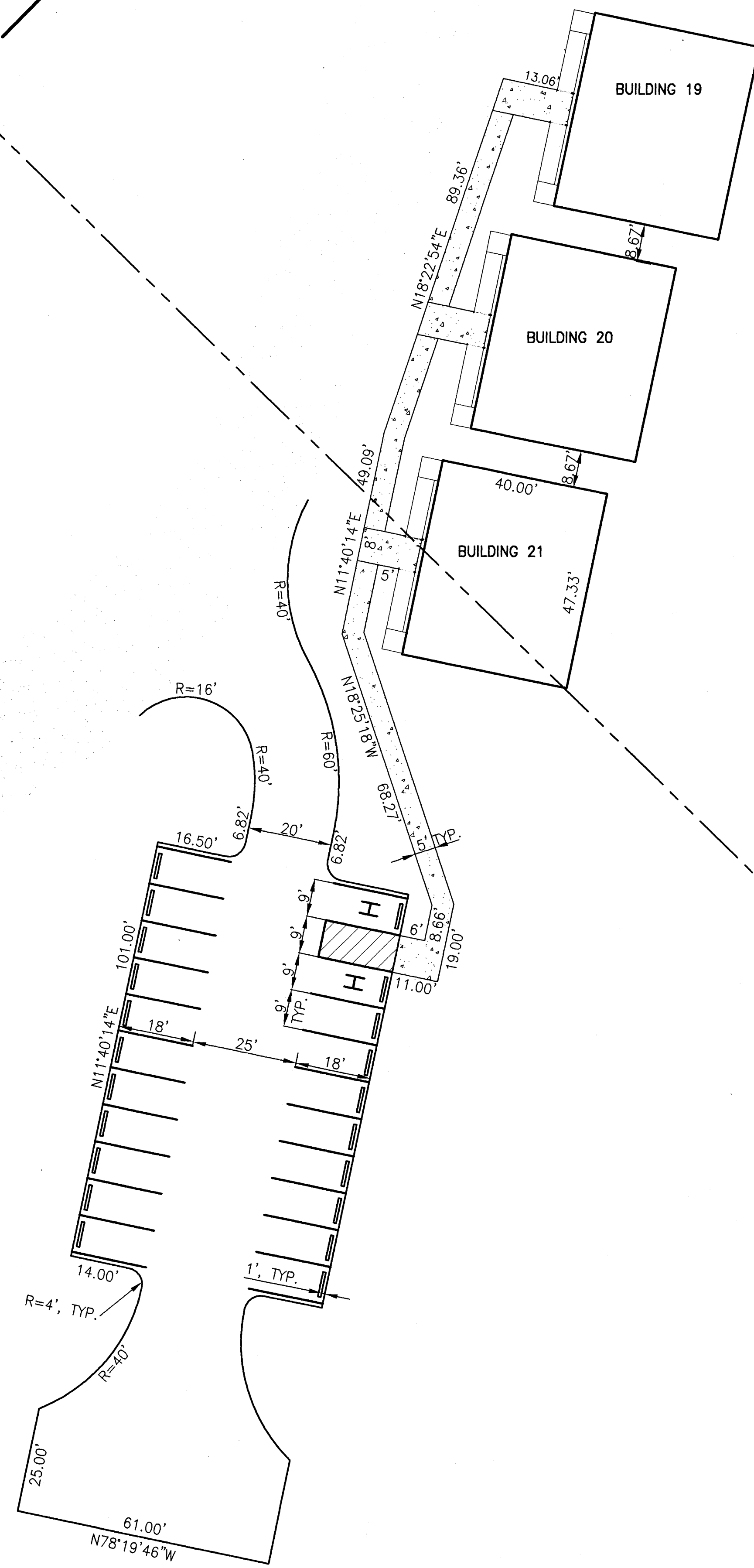
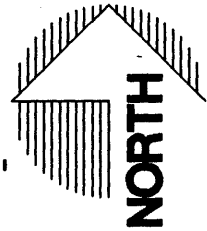
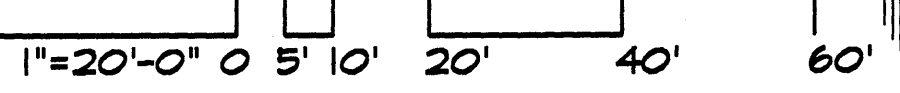


NOTES:

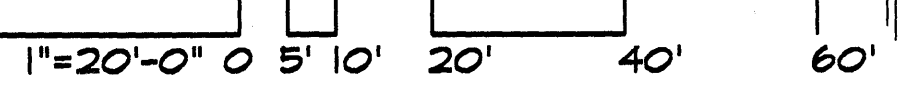
1. ELEVATIONS SHOWN ARE TO FINISH GRADE UNLESS NOTED OTHERWISE.
2. ACCESSIBLE PATH OF TRAVEL AS INDICATED ON PLAN IS A BARRIER FREE ACCESS WITHOUT ANY ABRUPT VERTICAL CHANGES EXCEEDING 1/2" AT 1:2 MAXIMUM SLOPE, EXCEPT THAT LEVEL CHANGES DO NOT EXCEED 1/4" VERTICAL. MAXIMUM CROSS SLOPE IS 2%.



GRADING PLAN



DIMENSIONAL PLAN



Handwritten signature and initials

CITY APPROVAL	
PREPARED UNDER THE SUPERVISION OF	
DAVID EVANS AND ASSOCIATES, INC.	SCALE: AS SHOWN
5000 EXECUTIVE PARKWAY, SUITE 125, SAN RAMON, CALIFORNIA 94583	DATE: 12/15/00
INC.	DRAWN BY: LTM
TEL: (925) 867-3380 FAX: (925) 867-3388	ENGINEER: MEW
CALIFORNIA	CHECKED BY: MEW
REDWOOD CITY	PG.
CAÑADA COLLEGE	
SAN MATEO COUNTY COMMUNITY COLLEGE DISTRICT	
GRADING & DIMENSIONAL PLAN	
WEST ED MODULAR BUILDINGS	
SHEET NO. 3	NO. BY DATE
OF 8 SHEETS	
JOB No. SMCC0000-0003	