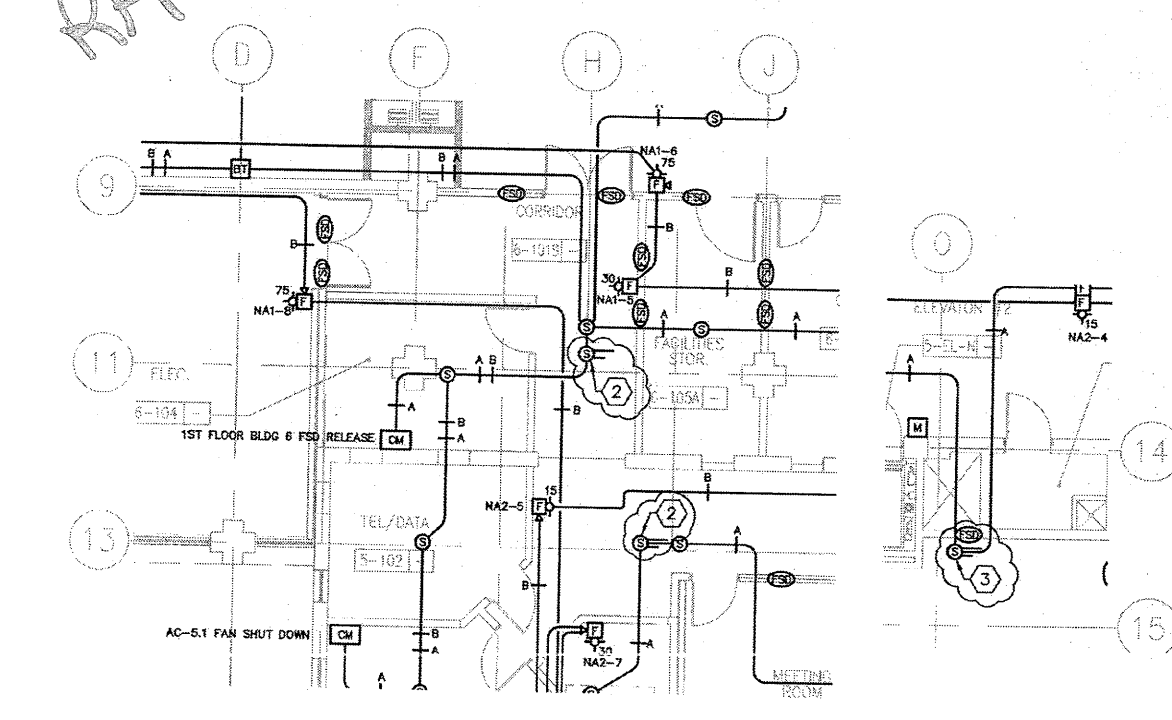


RFP-56



**SHEET KEYNOTES**

1. AC-61 SUPPLY DUCT: PROVIDE ONE ADDITIONAL DUCT-MOUNTED SMOKE DETECTOR ON THE SUPPLY DUCTWORK FROM AC-61.5. RELOCATE ONE DETECTOR FROM THE SUPPLY DUCT OF THE UNIT IN MECH 5-204 TO EACH DUCT SECTION AT APPROXIMATELY 50% THE WAY BETWEEN THE 24G2 INLET AND THE 8" DUCT TO 16-41-15. INSTALL THE NEW DETECTOR ON THE SMOKE DUCT SECTION AT APPROXIMATELY H5/13.

2. ASH AT DRY LINE D/F-4.5: REMOVE THE DUCT-MOUNTED SMOKE DETECTOR ON THE 24X30 ELECTRIC AIRSTREAM FROM THE ELBOW AND WITHIN 5' OF THE DAMPER.