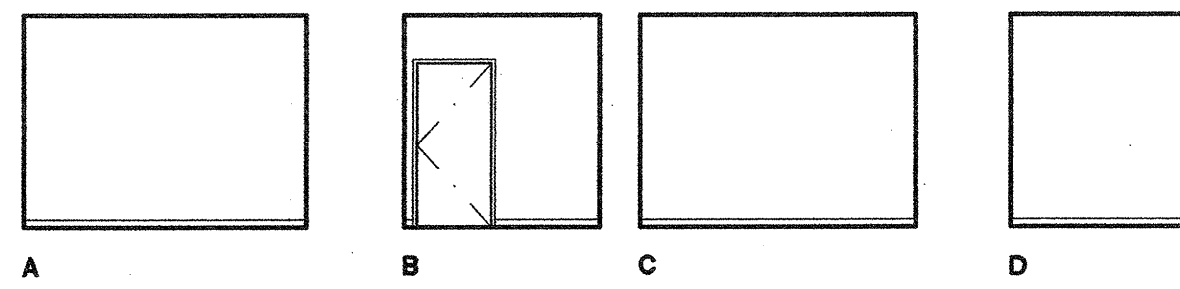


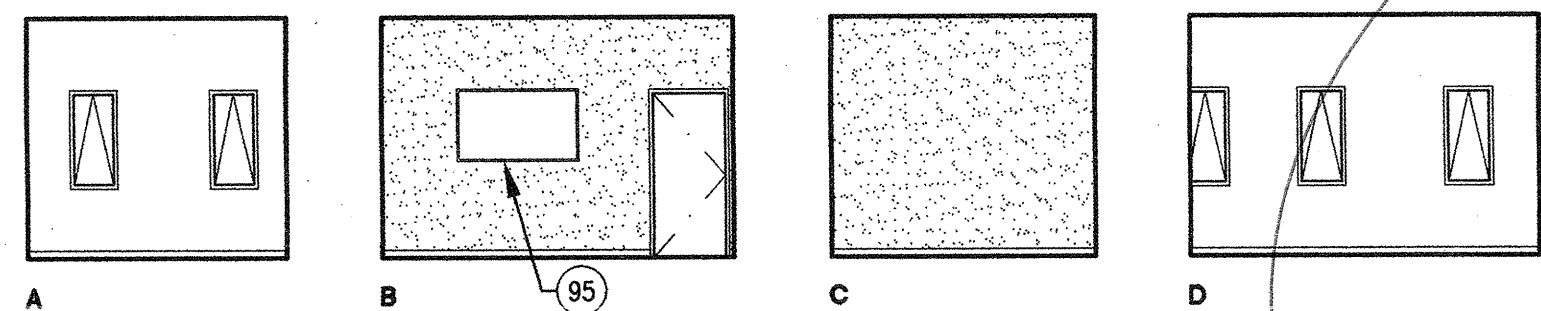
DSPS FACULTY OFFICE RM. 5-305 8

SCALE 1/8" = 1'-0"



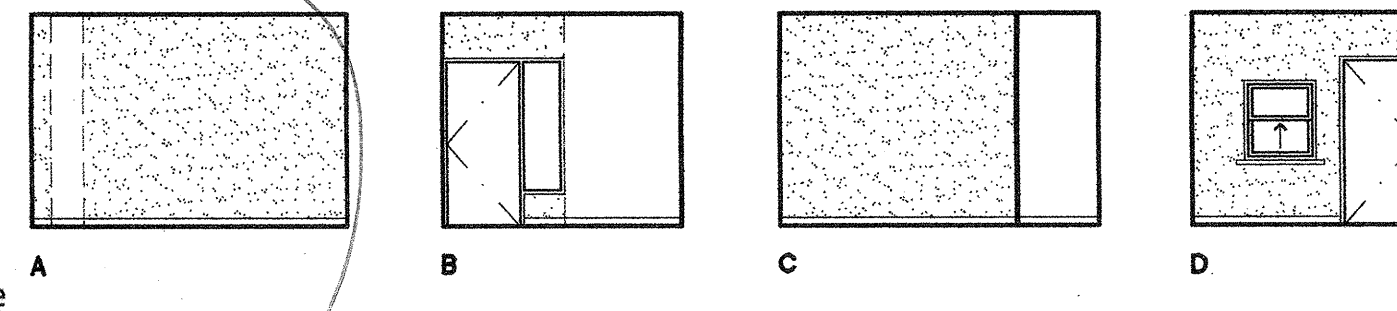
STORAGE RM. 5-229 1

SCALE 1/8" = 1'-0"



DSPS DIRECTOR OFFICE RM. 5-306 9

SCALE 1/8" = 1'-0"



RECEPTION RM. 5-230 2

SCALE 1/8" = 1'-0"

From: Acenas, Alexander
Sent: Thursday, June 17, 2010 12:44 PM
To: Holes, W.Amy
Cc: Rizzoli, Linda; Nelson, Blake; Sandrine Hitchcock; Glass, Danny W.; Huey, Justin
Subject: RE: CAN 5 6: chair rail height?

Thanks for setting me up with Phil (and Scott) yesterday afternoon. I got to see a meeting room and a classroom in CSM B5. Based on what I saw, I think the top of the chair rail should be at +36" AFF, +/- 0.5". This will allow the bottoms of tack boards, white boards and marker trays to be at +36" AFF, and also allow the chair rail to run continuously below existing window openings in the exterior concrete wall. Although table edges and chair backs are around 29"-30" AFF, the walls would still be protected by the vinyl wainscot below the chair rail.

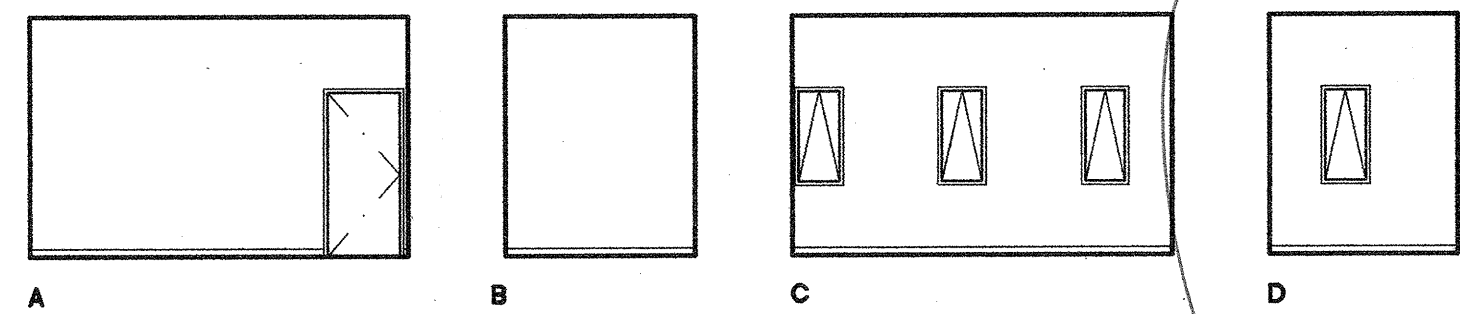
Let me know if there are any further questions re: this matter.

Alex

Alex Acenas, Architect
Project Manager

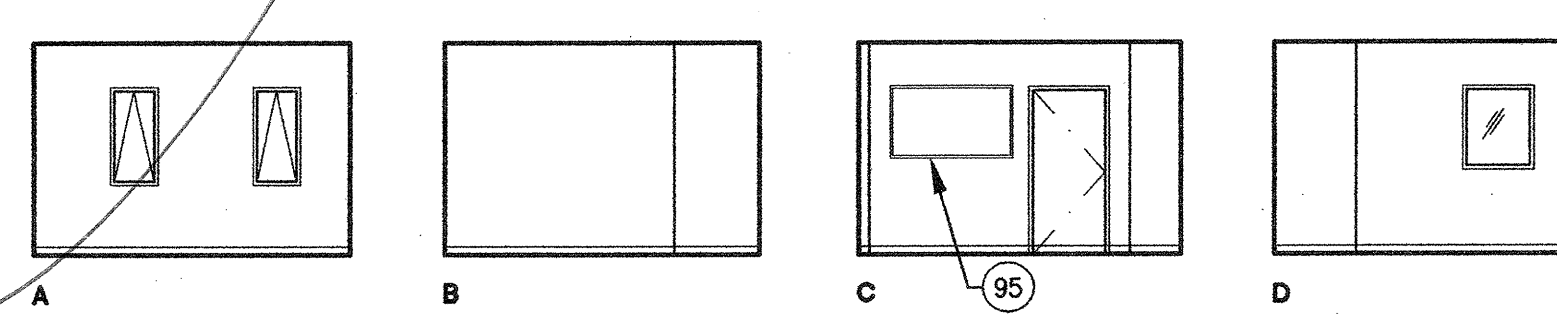
San Mateo County Community College District
Construction Planning Department
1700 W Hillside Blvd, CSM B27
San Mateo, CA 94402

650 358 6861 office



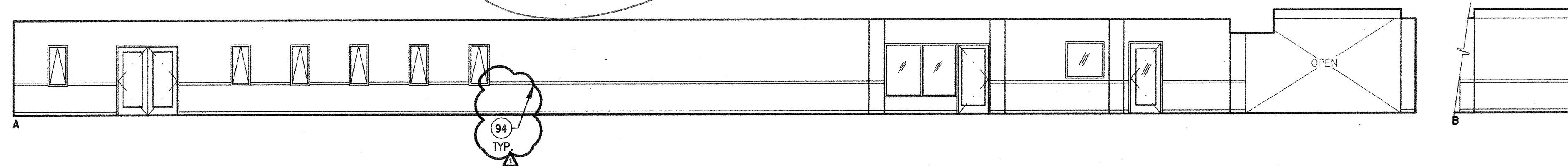
PSYCH. COOR. OFFICE RM. 5-307 10

SCALE 1/8" = 1'-0"

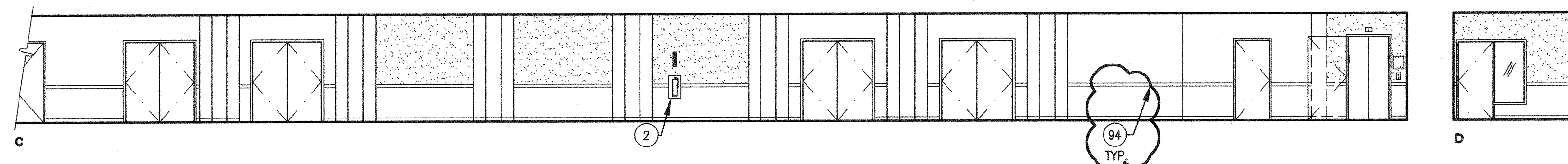


DIRECTOR RM. 5-232 3

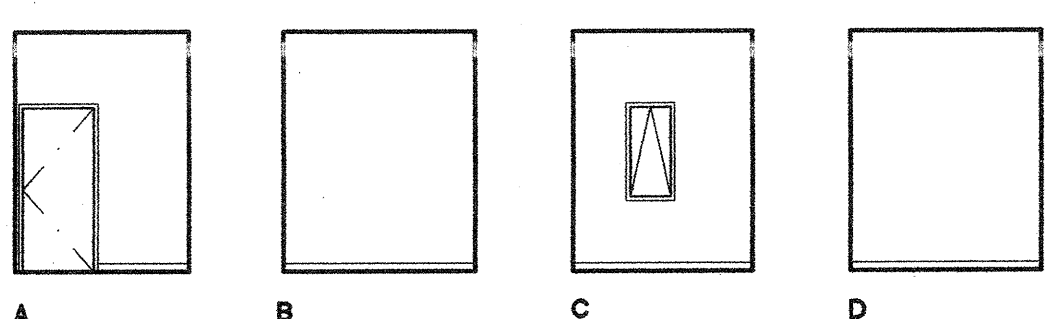
SCALE 1/8" = 1'-0"



SCALE 1/8" = 1'-0"

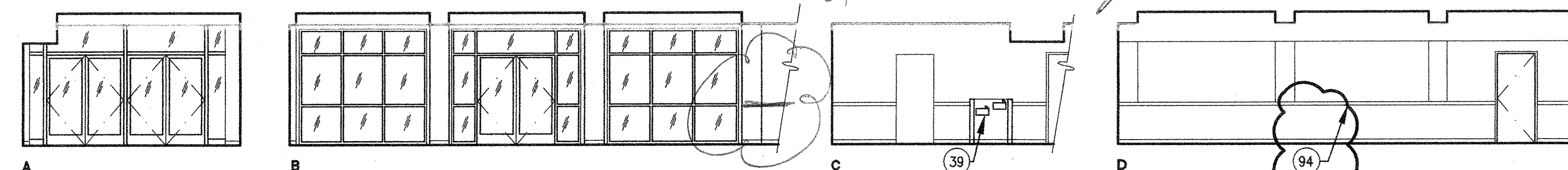


HALLWAY RM. 5-301N 4



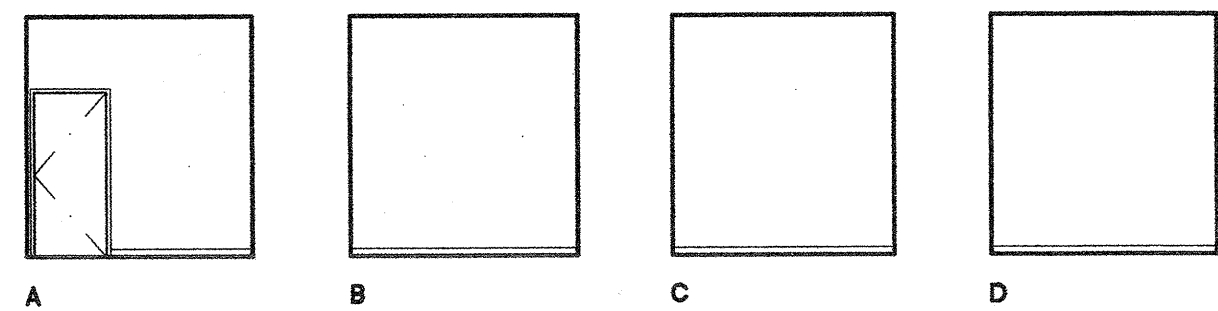
THERAPY RM. 5-308 11

SCALE 1/8" = 1'-0"



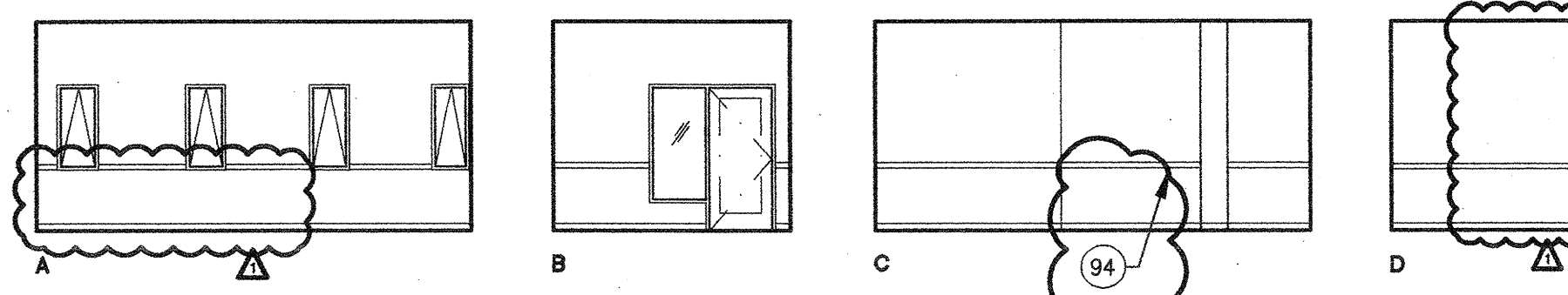
LOBBY RM. 5-301E 5

SCALE 1/8" = 1'-0"



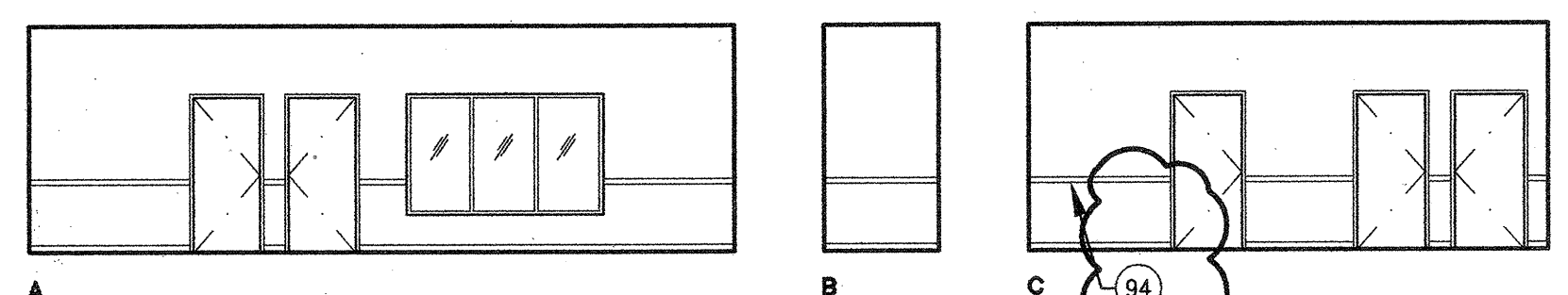
PSYCH. OFFICE RM. 5-309 12

SCALE 1/8" = 1'-0"



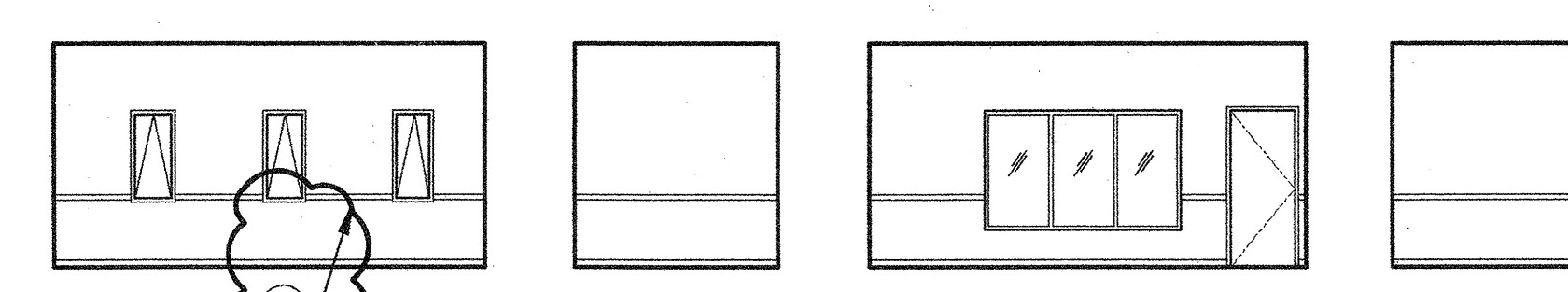
WAITING/RECEPTION RM. 5-303 6

SCALE 1/8" = 1'-0"



HALLWAY RM. 5-310N 13

SCALE 1/8" = 1'-0"



TESTING RM. 5-304 7

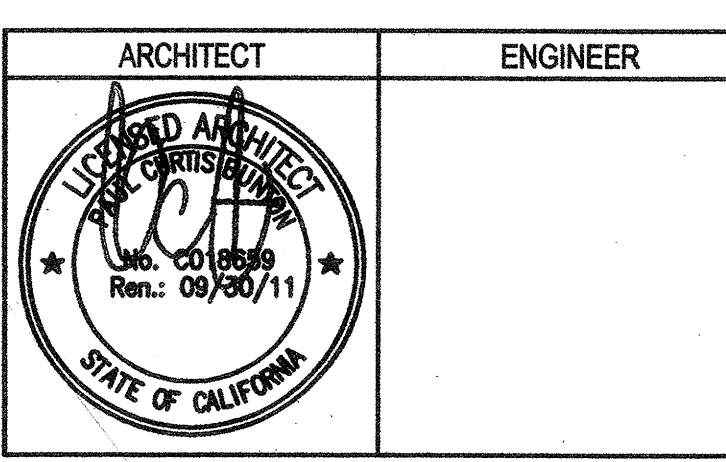
SCALE 1/8" = 1'-0"

SHEET NOTES

- 1 FIRE EXTINGUISHER (20AB10C) ON WALL BRACKET MOUNT
- 2 FIRE EXTINGUISHER (20AB10C) IN SEMI-RECESSED CABINET (SEE DETS 25/A10.52 & 11/A10.62)
- 3 BASE CABINET
- 4 ACCESSIBLE BASE CABINET W/ SINK
- 5 REFRIGERATOR SPACE (EQUIPMENT N.I.C.)
- 6 SOFFIT
- 7 SUSPENDED LIGHT FIXTURE
- 8 WALL MTD. PULL-DOWN PROJECTION SCREEN
- 9 WALL MTD. MOTORIZED PROJECTION SCREEN
- 10 OPERABLE PANEL PARTITION (SEE DETS. 19 & 20/A10.91)
- 11 HI-LO DRINKING FOUNTAIN (SEE DETS. 13, 14, 18 & 19/A10.62)
- 12 ELECTRONIC WHITEBOARD (SEE DET. 12/A10.62)
- 13 MOP SINK
- 14 POCKET FOR STORING FOLDING PARTITION
- 15 OFCI CASEWORK AND DUPLICATION EQUIPMENT
- 16 FIXED SHELVES
- 17 16'-0" W. MARKER BOARD W/ TOP OF MARKER TRAY @ 36" A.F.F. (SEE DETS. 22, 23/A10.51)
- 18 INFILL WALL W/ EXTERIOR CEMENT PLASTER FINISH
- 19 8'-0" W. TACKBOARD
- 20 4'-0" W. TACKBOARD
- 21 2'x2'x1" THICK ACOUSTICAL PANELS
- 22 CHAIR RAIL WITH WAINSCOT PANEL BELOW, SEE 8/A10.62
- 23 5'-0" WIDE X 3'-0" HIGH COMBINATION MARKER/TACK BOARD



Bunton Clifford Associates, Inc.
210 Hammond Ave.
Fremont, California 94539
[T] 510.445.1000
[F] 510.445.1005
www.BCAincOnline.com



GENERAL NOTES
1. This sheet is part of a set and is not to be used alone.
2. This sheet is not to be used for construction unless the architect's stamp and signature appear on the drawings and the status box indicates drawings have been released for construction.
3. These plans and prints thereof, as instruments of service, are owned by the architect and are for use on this project only. Reproduction and/or distribution without the prior written consent of the architect is forbidden.
4. Copyright Bunton Clifford Associates, 2009

REMARKS	DATE
ADDENDUM NO. 1	08/18/09

DRAWING STATUS	DATE
DSA PLAN CHECK	08/28/08
DSA BACK CHECK	01/22/09
BIDDING	09/18/09
CONSTRUCTION	

FILE NO. 41-C1

IDENTIFICATION STAMP
DIV. OF THE STATE ARCHITECT

01- 110074

AC _____ FLS _____ SS _____

DATE _____

BUILDINGS 5 & 6 RENOVATIONS
San Mateo County Community College District

BID ADDENDA
APPROVED BY
DIV. OF THE STATE ARCHITECT
10-27-10 FLS RC SS JTB
APPL NO. 110074 DATE 2/12/10

CAÑADA COLLEGE
4200 Farm Hill Boulevard
Redwood City, CA 94061

SECOND & THIRD FLOOR
INTERIOR ELEVATIONS

Date 08/29/08 Drawing Number
Scale AS NOTED **A8.4**
Project Number 07013

GENERAL NOTES

LEGEND

