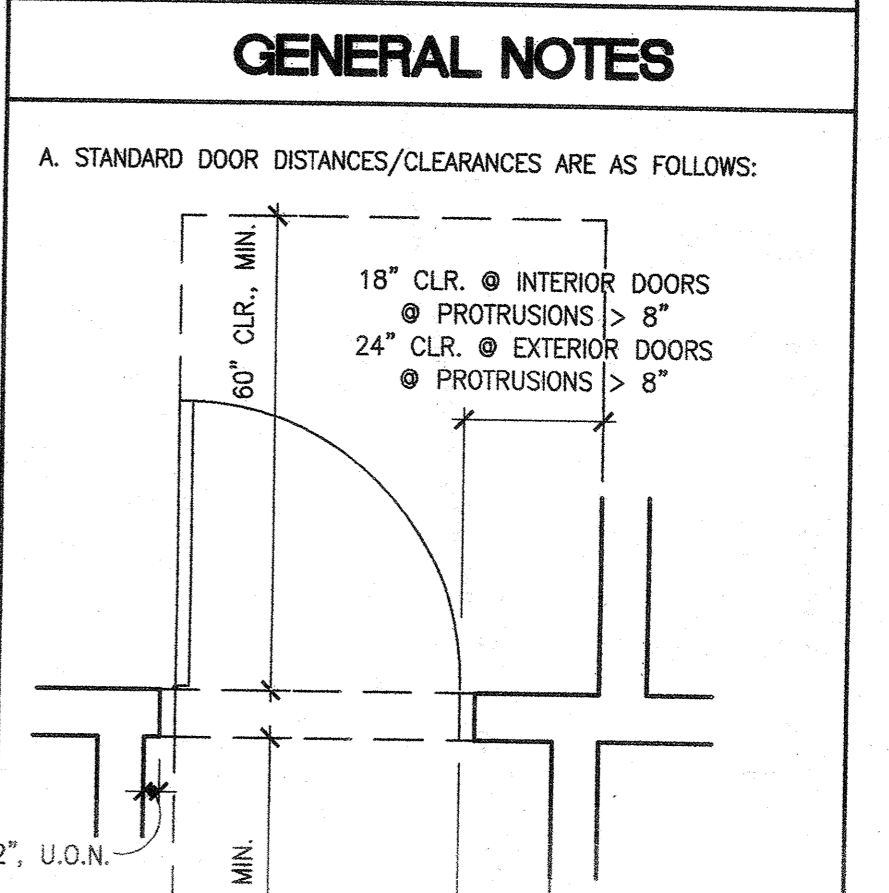


- SHEET NOTES**
- FIRE EXTINGUISHER (20AB10C) IN SEMI-RECESSED CABINET (SEE DETS 25/A10.52 & 11/A10.62)
 - UPPER CABINET. (SEE DET. 3/A10.62)
 - (E) ADA RAMP TO REMAIN (DSA #27796)
 - MECHANICAL SHAFT
 - ROLLER SHADES
 - HI-LO DRINKING FOUNTAIN (SEE DETS. 13, 14, 18 & 19/A10.62)
 - CONCRETE STAIRS
 - LINE OF SOFFIT ABOVE
 - COUNTER (OPEN BELOW) (SEE DET. 10/A10.62)
 - REPLACEMENT NOSING W/ CONTRASTING COLOR STRIPS AT (E) CONCRETE STAIRS, TYP. (SEE DET. 17/A10.21)
 - (E) ELEVATOR TO REMAIN
 - PVC SHEET WATER PROOFING. (SEE SHEET A2.5)
 - REPLACE (E) DECK DRAINS AND LEADERS. (SEE DET. 21/A10.21)
 - MODIFY (E) METAL GUARDRAIL. (SEE DET. 11/A10.21)
 - ADA-COMPLIANT HANDRAILS. DET. 1/A10.21 SIM. SEE 29/A7.3
 - (E) CONC WALL TO REMAIN (SEE SHTS A9.41-A9.43 FOR FINISHES)

- GENERAL NOTES**
- A. STANDARD DOOR DISTANCES/CLEARANCES ARE AS FOLLOWS:
- 18" CLR. MIN.
60" CLR. MIN.
48" CLR. MIN.
- 18" CLR. @ INTERIOR DOORS
PROTRUSIONS > 8"
24" CLR. @ EXTERIOR DOORS
PROTRUSIONS > 8"
- B. ALL WALL AND CEILING ACCESS DOORS SHALL BE 1-HOUR RATED IN CORRIDORS AND 2-HOUR RATED IN OCCUPANCY SEPARATION WALLS.
- C. THE FLOOR OR LANDING LENGTH ON EACH SIDE OF AN EXIT DOOR SHALL BE LEVEL (MAX. SLOPE 1/4" PER FOOT) AND CLEAR AT LEAST 60 INCHES IN THE DIRECTION OF THE DOOR SWING (PULL SIDE) AND 48 INCHES ON THE PUSH SIDE, WHEN MEASURED AT RIGHT ANGLES FROM DOOR IN CLOSED POSITION. THE CLEAR WIDTH SHALL EXTEND 24 INCHES BEYOND THE STRIKE ON THE PULL SIDE OF ALL EXTERIOR EXIT DOORS AND 18 INCHES FOR INTERIOR EXIT DOORS. THE CLEAR WIDTH SHALL EXTEND 12 INCHES BEYOND THE STRIKE EDGE OF THE PUSH SIDE OF ALL EXIT DOORS. DOORS SHALL BE EQUIPPED WITH BOTH A LATCH AND CLOSER.
- D. SEE SHEET A9.1 & A9.2 FOR DOOR, WINDOW AND FINISH SCHEDULES. RATED DOORS AND PANIC HARDWARE ARE INDICATED ON THE DOOR SCHEDULE.
- E. PROVIDE ADDITIONAL STUD FRAMING FOR OPENINGS AS INDICATED ON STRUCTURAL PLANS AND ON DOOR AND WINDOW DETAILS.
- F. PROVIDE BACKING IN STUD WALLS FOR ALL WALL-MOUNTED CABINETS AND ACCESSORIES, TYP.

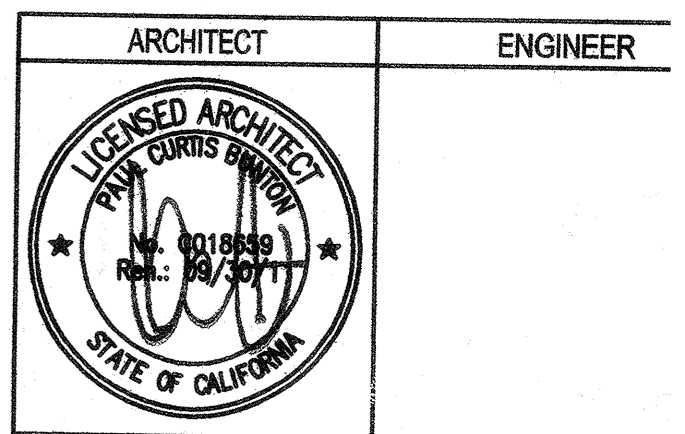


BCA

architecture
planning
interiors

Bunton Clifford Associates, Inc.
210 Hammond Ave.
Fremont, California 94539
[T] 510.445.1000
[F] 510.445.1005
www.BCAincOnline.com

SEE RFI-25
EXISTING DOORS



- GENERAL NOTES**
- This sheet is part of a set and is not to be used alone.
 - This sheet is not to be used for construction unless the architect stamp and signature appear on the drawings and the status bar indicates drawings have been released for construction.
 - These plans and prints thereof, as instruments of service, are owned by the architect and are for use on this project only. Reproduction and/or distribution without the prior written consent of the architect is forbidden.
 - Copyright Bunton Clifford Associates, 2009

REVISIONS	DATE
ADDENDUM NO. 1	08/18/08
ADDENDUM NO. 2	11/08/08

DATE
08/28/08
01/22/09
08/18/09

FILE NO. 41-C1

DIVISION OF THE STATE ARCHITECT

01-110074

BUILDINGS 5 & 6 RENOVATIONS

San Mateo County Community College District

SEE RFI-15 AND 23 STOREFRONT ANCHOR

APPROVED
DIV OF THE STATE ARCHITECT
AC 24 FLS 88 SS JTC
APPL NO. 110274 DATE 8/26/10

CAÑADA COLLEGE
4200 Farm Hill Boulevard
Redwood City, CA 94061

THIRD FLOOR PLAN

Date: 08/29/08
Scale: AS NOTED
Project Number: 07013

Drawing Number: **A2.3**