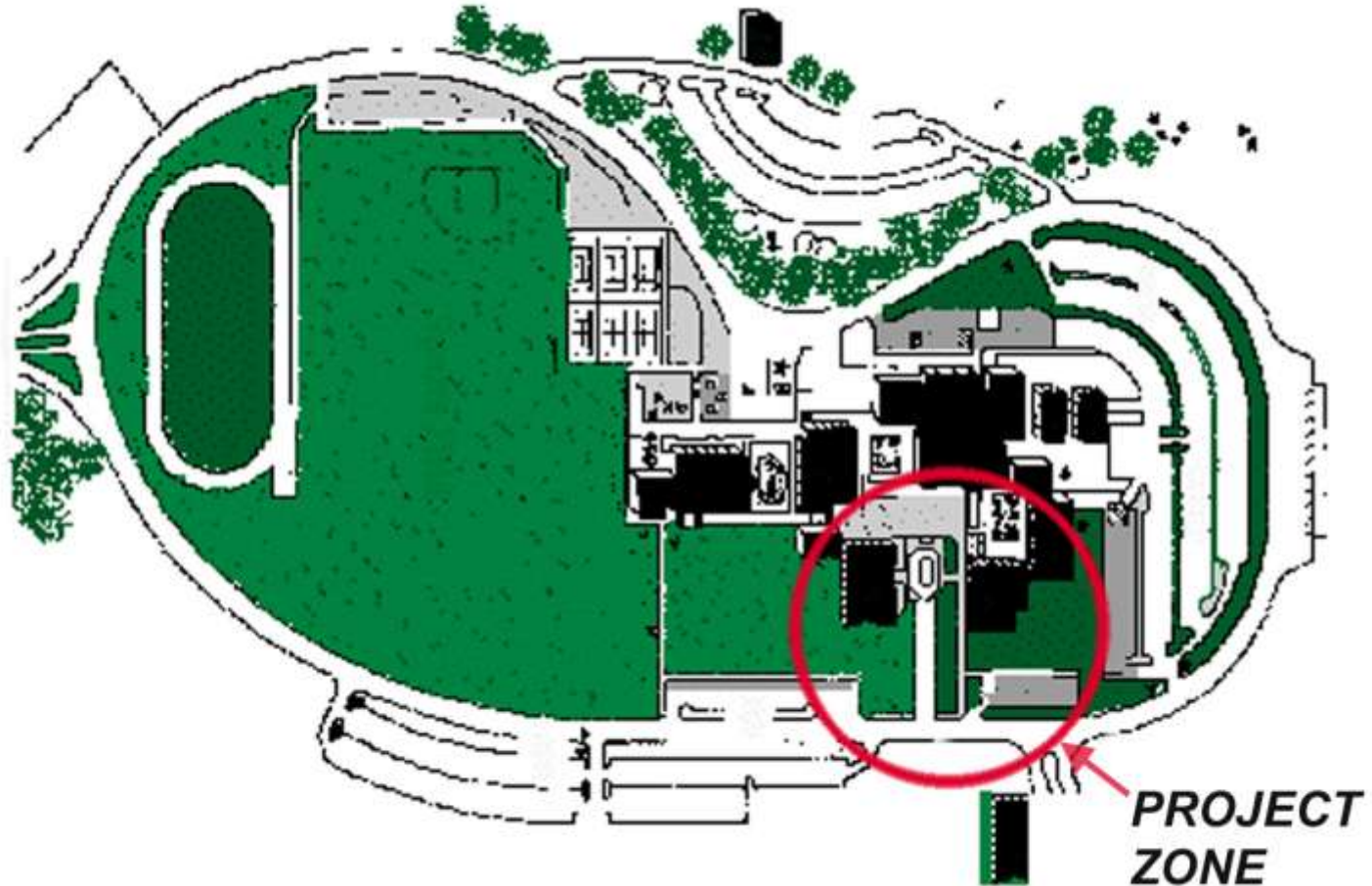


Student Support & Community Services Center / Science Annex

Skyline College



Project Scope Overview



Budget and Schedule

TOTAL PROJECT BUDGET:

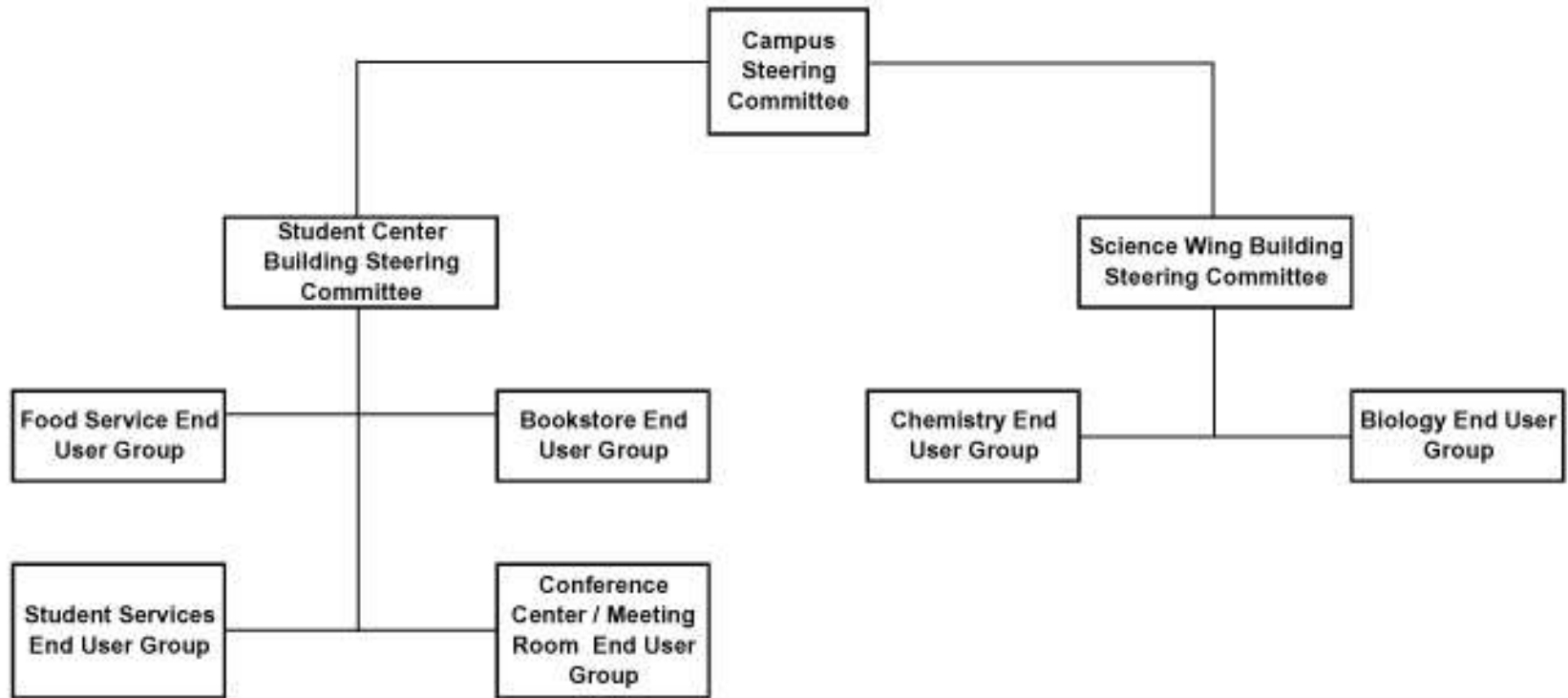
\$ 23.6 Million

PROJECT SCHEDULE:

- ARCHITECT SELECTION February 2002
- STUDENT UNION PROGRAMMING December 2002
- SCIENCE ANNEX PROGRAMMING June 2003
- SCHEMATIC DESIGN October 2003
- DESIGN/BUILD PRE-QUALIFICATION November 2003
- BRIDGING DOCUMENTS January 2004
- DESIGN/BUILD PROPOSALS February 2004
- DESIGN/BUILD COMMENCES March 2004
- GROUNDBREAKING Summer 2004
- BUILDING OCCUPANCY May 2006

Process

CAMPUS COMMITTEE ORGANIZATION CHART



Key User Group Participants

- SCIENCE DEPARTMENT
 - Mike Williamson – Dean Science Math & Technology
 - AJ Bates, Janice McOmber, Mousa Ghanma – Chemistry
 - Nick Kapp, Chris Case, Pat Carter – Biology
- STUDENT ACTIVITIES
 - Amory Buisch - Coordinator
- STUDENT GOVERNMENT
 - Tanya Johnson - Student Body President
- BOOKSTORE
 - Rick Bennett - Director of General Services
 - Andra Morgan - Director of Bookstore Operations
- FOOD SERVICE
 - Rick Bennett - Director of General Services

- SKYLINE ADMINISTRATION

- FACILITIES / INFORMATION TECHNOLOGY SERVICES

Status of Work

Space Program Summary

Student Center

	ASF	eff.	DGSF
■ Reception	2,260	60%	3,767
■ Student Activities	1,800	70%	2,571
■ Bookstore	4,505	70%	6,007
■ Food Service	9,150	70%	12,200
■ Student Act. Office	500	65%	769
■ Associated Students	620	70%	886
■ Multi-Cult. Center	580	70%	829
■ Meeting Center	6,600	65%	10,154
■ TOTAL	26,015	70%	37,182

TOTAL BUDGET: \$ 14 Million

Science Wing

	ASF	eff.	DGSF
■ Common Areas	836	65%	1,286
■ Chemistry Depart.	6,770	65%	10,415
■ Biology Depart.	6,765	65%	10,408
■ Shared Elements	2,700	65%	4,154
■ TOTAL	17,071	65%	26,263

TOTAL BUDGET: \$ 9.6 Million

Consolidated Totals

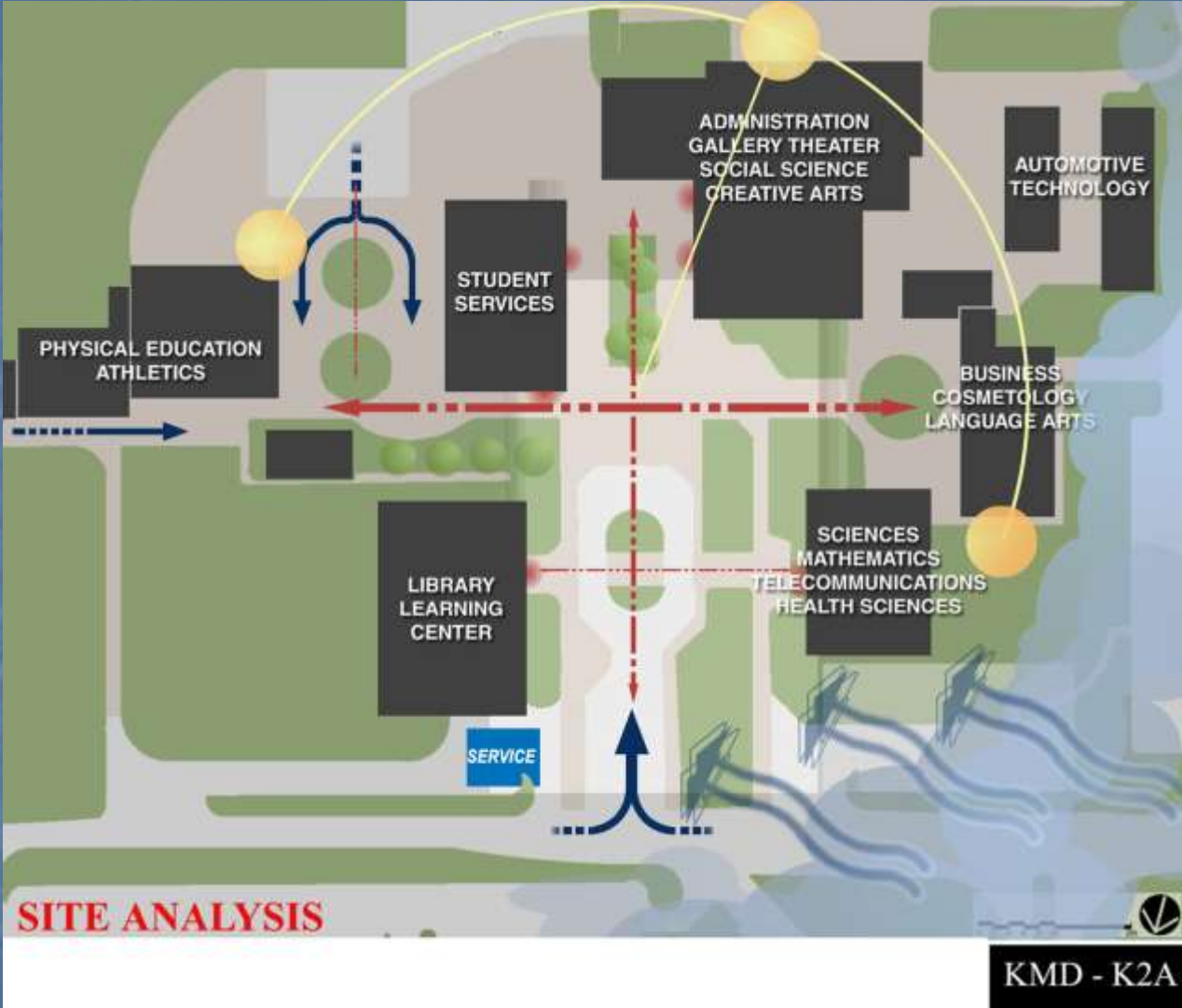
Budget:	\$23.6 Million
ASF	43,086
DGSF	63,445

Process

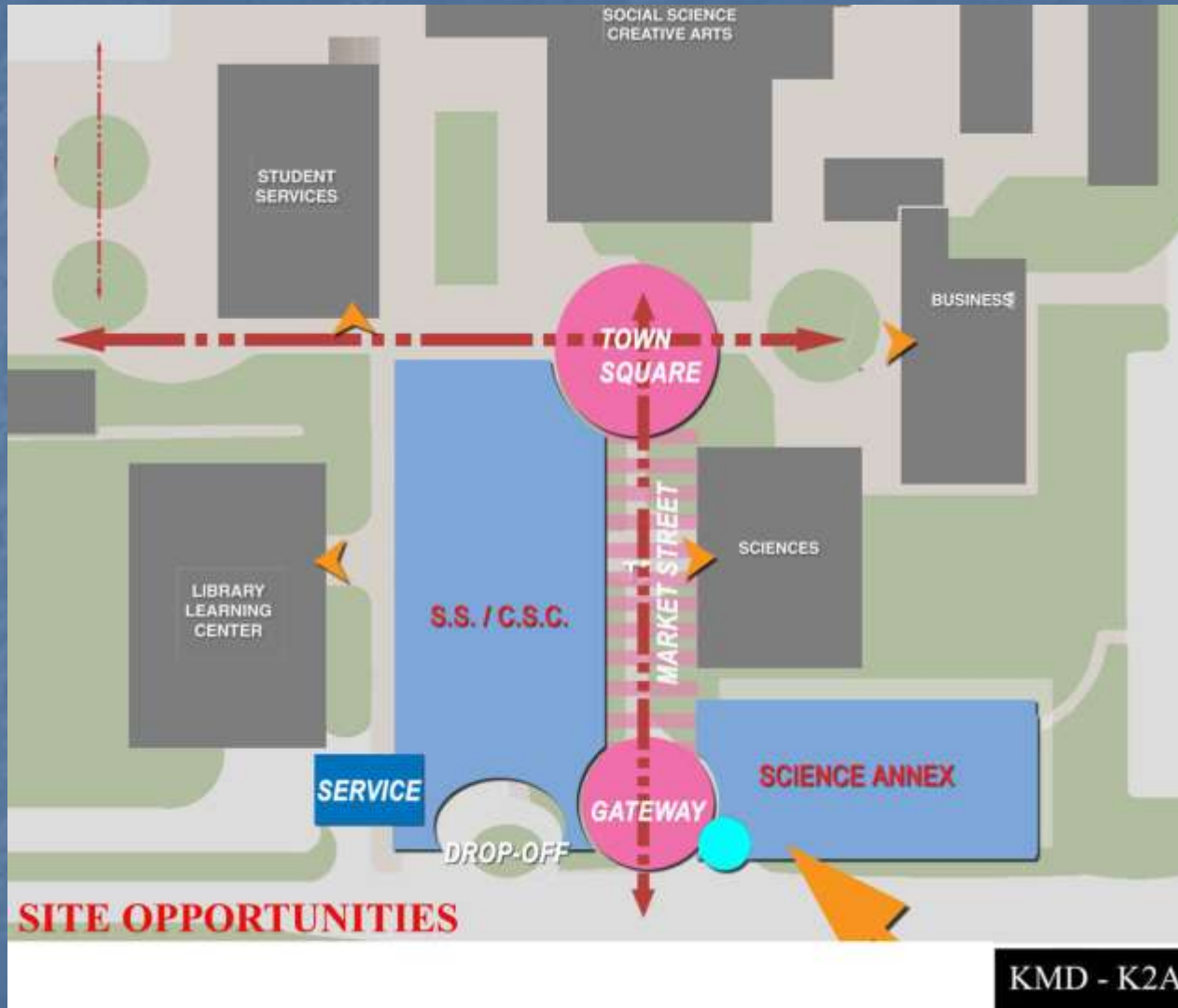
SKYLINE COLLEGE PROJECT VALUES

- GATEWAY TO COLLEGE / COMMUNITY
- INVESTING IN COMMUNITY
- FLEXIBLE, CONVERTIBLE, VARIETY
- COLLEGE "LIVING ROOM"
- COMFORTABLE / OPEN
- BUDGET
- MAINTAINABLE
- "STATE OF THE ART" TECHNOLOGY
- NATURAL LIGHT
- AIR QUALITY
- CONNECTION TO NATURE

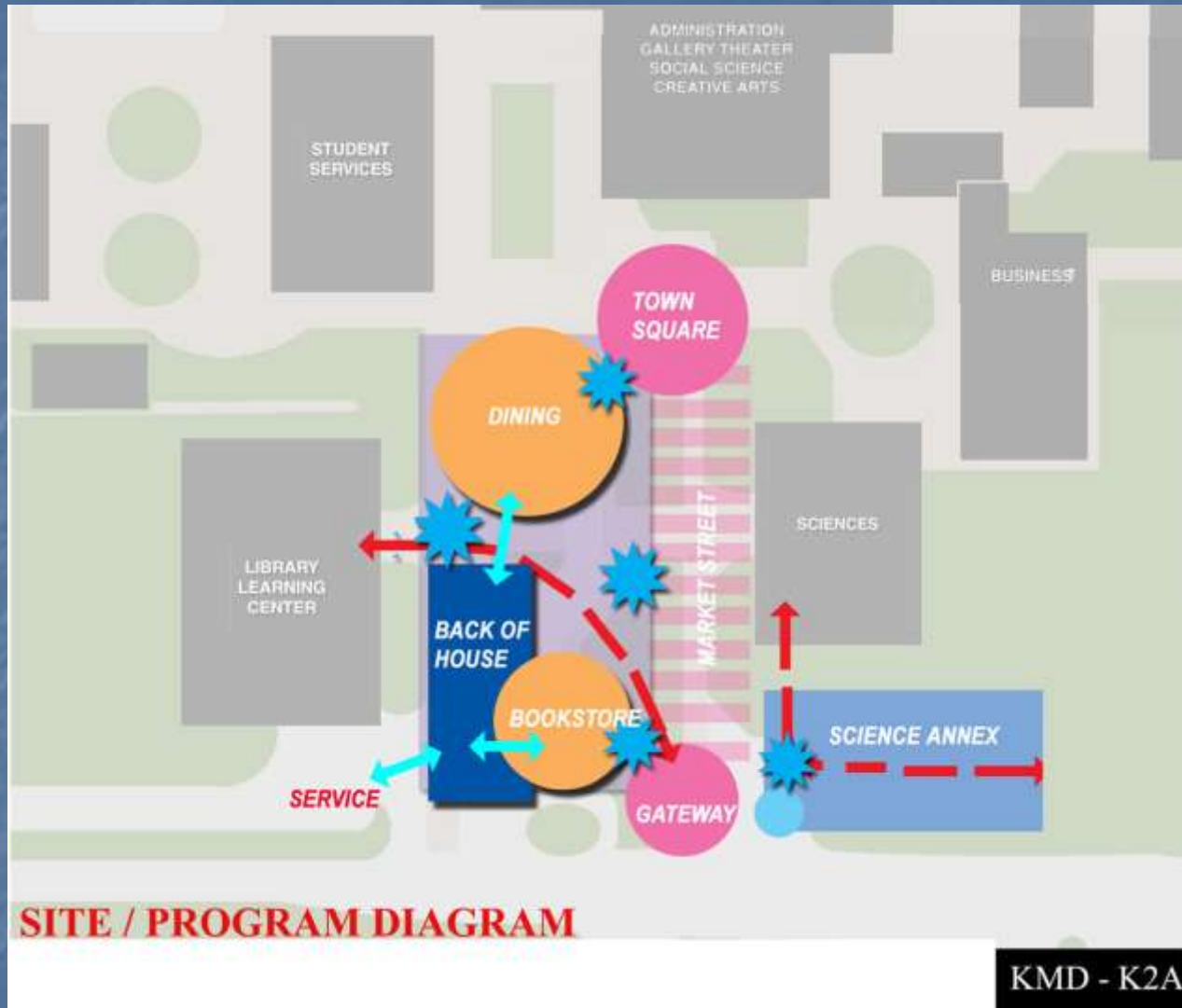
Site Analysis



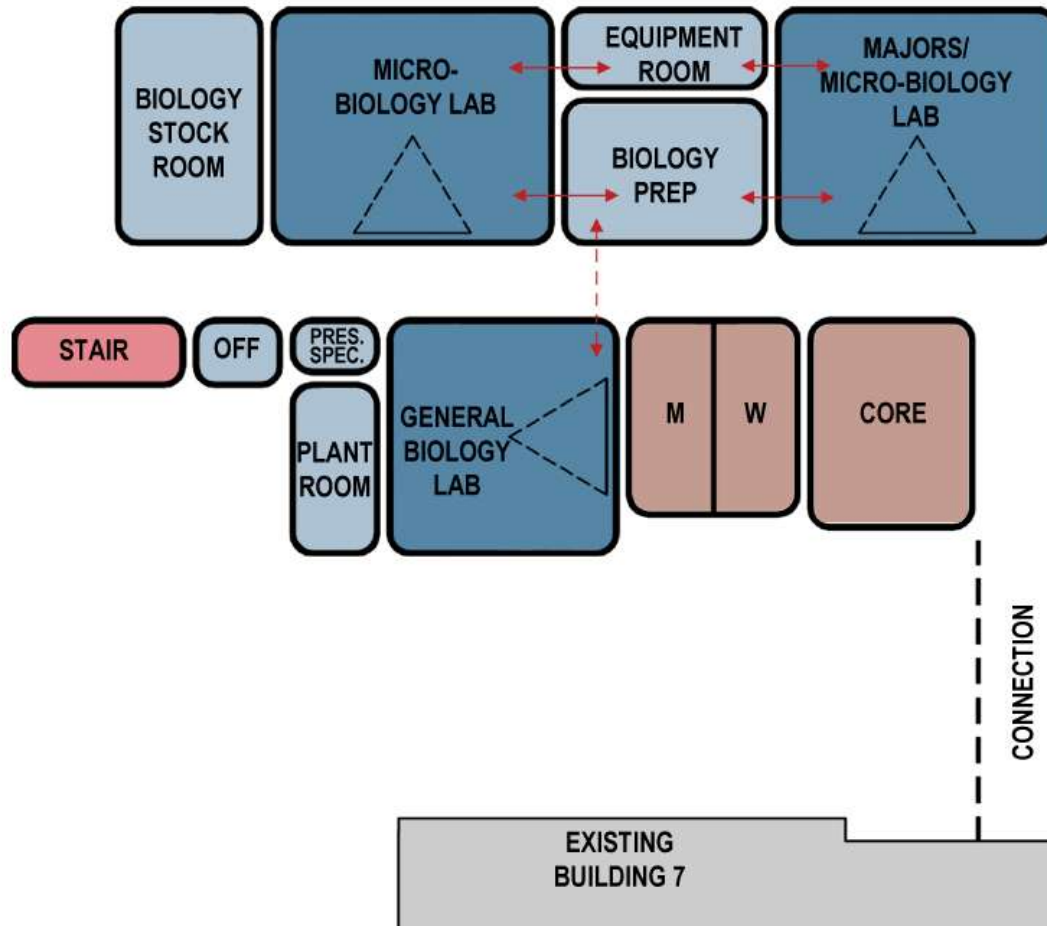
Site Opportunities



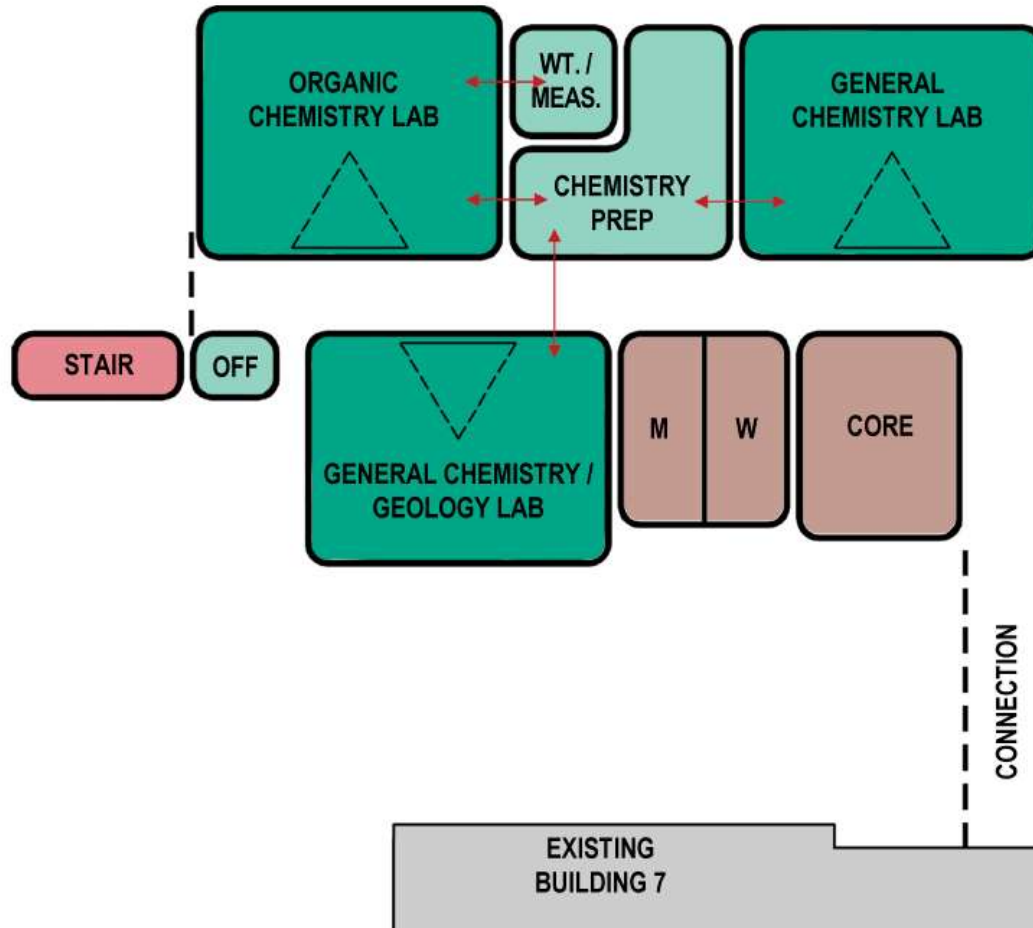
Site / Program Diagram



Status of Work



Status of Work



Project Summary

- Collaborative Effort
- Design/Build Project
- \$23.6M Total Project Cost
- Summer 2004 Groundbreaking
- Questions & Answers