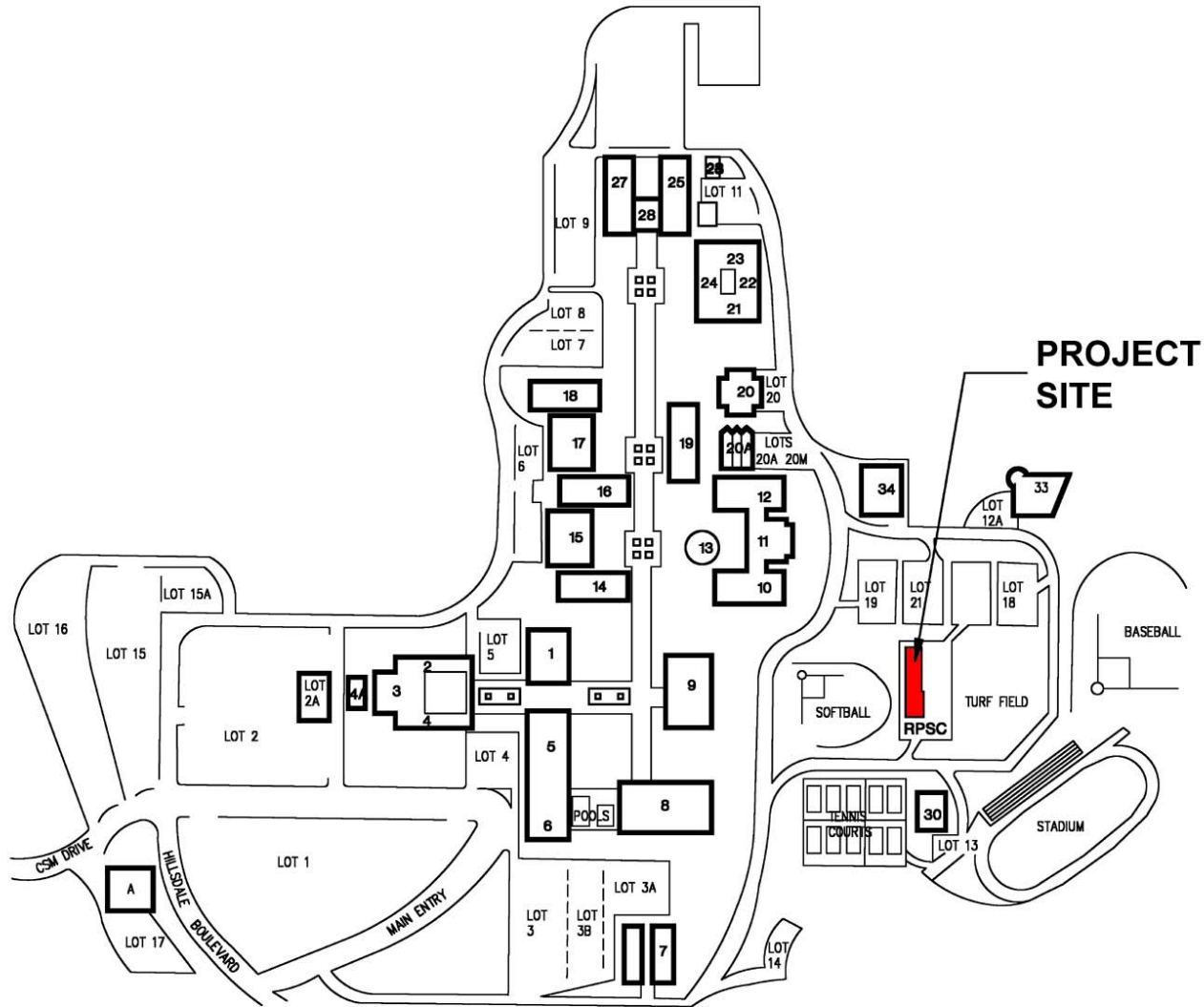


■ REGIONAL PUBLIC SAFETY CENTER

COLLEGE of SAN MATEO





CAMPUS PLAN



■ REGIONAL PUBLIC SAFETY CENTER

COLLEGE of SAN MATEO



TOTAL PROJECT BUDGET:

\$ 2.45 Million

PROJECT SCHEDULE:

- ARCHITECT SELECTION May 2001
- PROGRAMMING July 2003
- SCHEMATIC DESIGN September 2003
- DESIGN DEVELOPMENT November 2003
- CONSTRUCTION DOCUMENTS January 2004
- DSA APPROVAL May 2004
- BIDDING July 2004
- GROUNDBREAKING September 2004
- BUILDING OCCUPANCY August 2005

BUDGET AND SCHEDULE



■ REGIONAL PUBLIC SAFETY CENTER

COLLEGE of SAN MATEO



- SOUTH BAY REGIONAL PUBLIC SAFETY TRAINING CONSORTIUM
 David Paul – *Director*
 Cindy Bevan – *Dean*

- SOUTH SAN FRANCISCO POLICE DEPARTMENT
 Mark Raffaelli – *Chief of Police*

- SAN MATEO COUNTY SHERIFF’S OFFICE
 Don Horsley – *Sheriff*
 Don O’Keefe – *Captain / Support Services*
 Lee Lazaro – *Deputy Director / Support Services*

- SAN MATEO COUNTY COMMUNITY COLLEGE DISTRICT
 José Nuñez – *Executive Director, Facilities Planning & Operations*
 Linda da Silva – *Director, Facilities Maintenance & Operations*

- CSM ADMINISTRATION
 Shirley Kelly – *College President*
 Grace Sonner – *VP of Instruction*
 Virgil Stanford – *Dean of Administrative Services*
 Mike Claire – *Dean of Technology*

- FACILITIES / INFORMATION TECHNOLOGY SERVICES

KEY USER GROUP PARTICIPANTS



■ REGIONAL PUBLIC SAFETY CENTER

COLLEGE of SAN MATEO



▪ CLASSROOM A	1,292 SF
▪ CLASSROOM B	1,515 SF
▪ MAT ROOM	1,856 SF
▪ MEN'S LOCKER ROOM	701 SF
▪ WOMEN'S LOCKER ROOM	583 SF
▪ BREAKROOM	632 SF
▪ ADMINISTRATIVE OFFICE	1,397 SF
TOTAL ASSIGNABLE SQUARE FEET	7,976 SF
TOTAL GROSS SQUARE FEET	9,226 SF

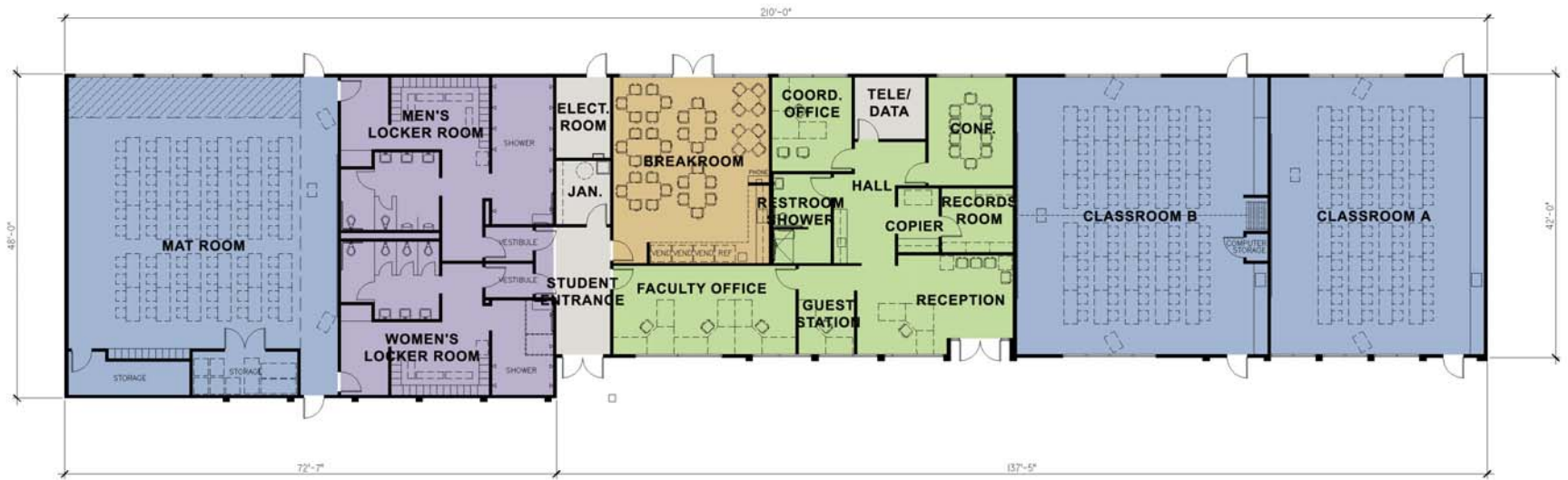
PROGRAM SPACES (ASF)



■ REGIONAL PUBLIC SAFETY CENTER

COLLEGE of SAN MATEO





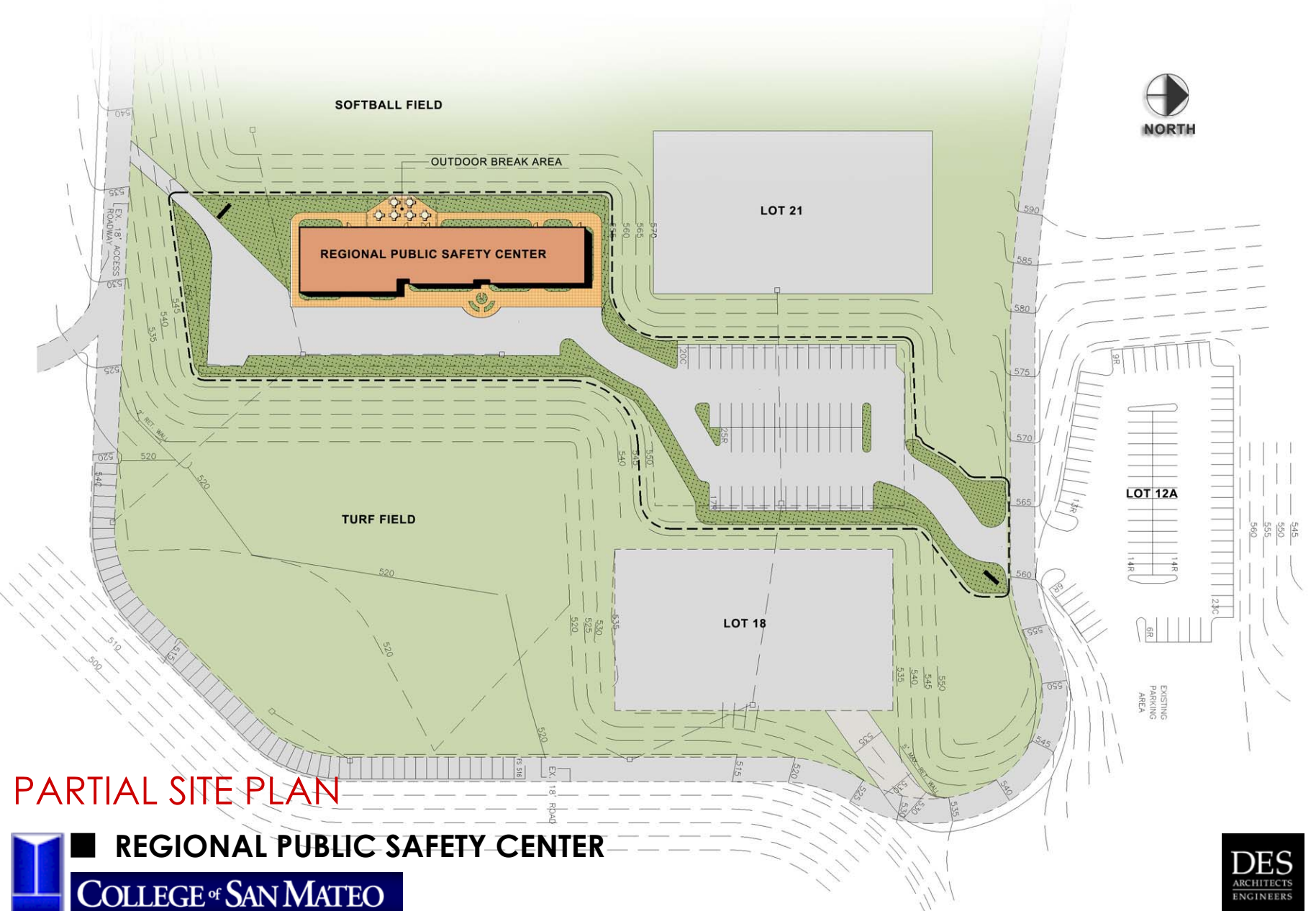
FLOOR PLAN



REGIONAL PUBLIC SAFETY CENTER

COLLEGE of SAN MATEO





PARTIAL SITE PLAN



Tone on Tone Colors



Engaged Columns



Vertical Window Expression



Flared Overhang



Solid Simplicity



Building Signage on Wall



Highs and Lows



Two-Faced Building

BUILDING IMAGES



REGIONAL PUBLIC SAFETY CENTER

COLLEGE of SAN MATEO



RPSC Summary

- Collaborative Effort
- Design-Bid-Build Project
- \$2.45M Total Project Cost
- Fall 2004 Groundbreaking
- Questions & Answers