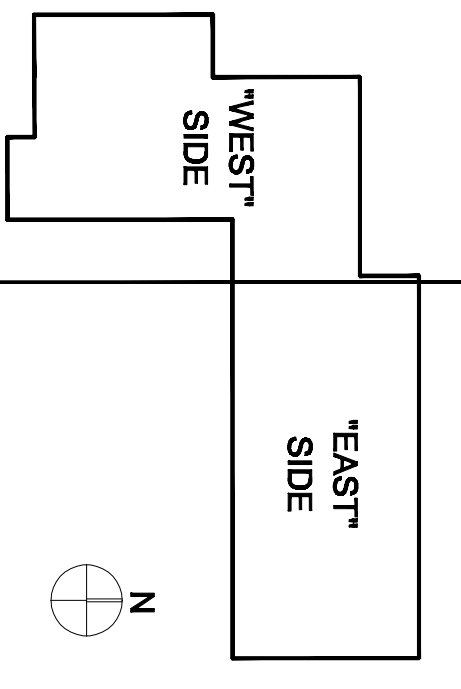


NO.	DESCRIPTION	DATE
1	10% PRELIMINARY DESIGN SUBMITTAL	06/20/09
2	30% DESIGN DEVELOPMENT SUBMITTAL	06/15/09
3	100% DESIGN DEVELOPMENT SUBMITTAL	07/20/09
4	PERMIT SUBMITTAL EXCAVATION, ROCK EXPOSURE & UTILITIES	08/20/09
5	INCORPORATE 2 RMA REVIEW	10/10/09
6	INCORPORATE 2 RMA REVIEW & RFP PARALLEL STRUCTURES & RFP PARALLEL	11/11/09
7	DOA INCORPORATE RFP REVIEW	11/17/09
8	DOA INCORPORATE RFP BACK CHECK	11/18/09
9	DOA INCORPORATE RFP REVIEW	12/28/09
10	DOA INCORPORATE RFP REVIEW & REWORK WITHIN	02/20/10
11	DOA INCORPORATE RFP BACKCHECK	02/17/10
12	DOA INCORPORATE RFP BACKCHECK	06/12/10
13	PROJECT RECORD SET	01/31/11

**PROJECT RECORD SET**

**SKYLINE COLLEGE  
 CIP2 DESIGN-BUILD  
 BUILDING 4N**

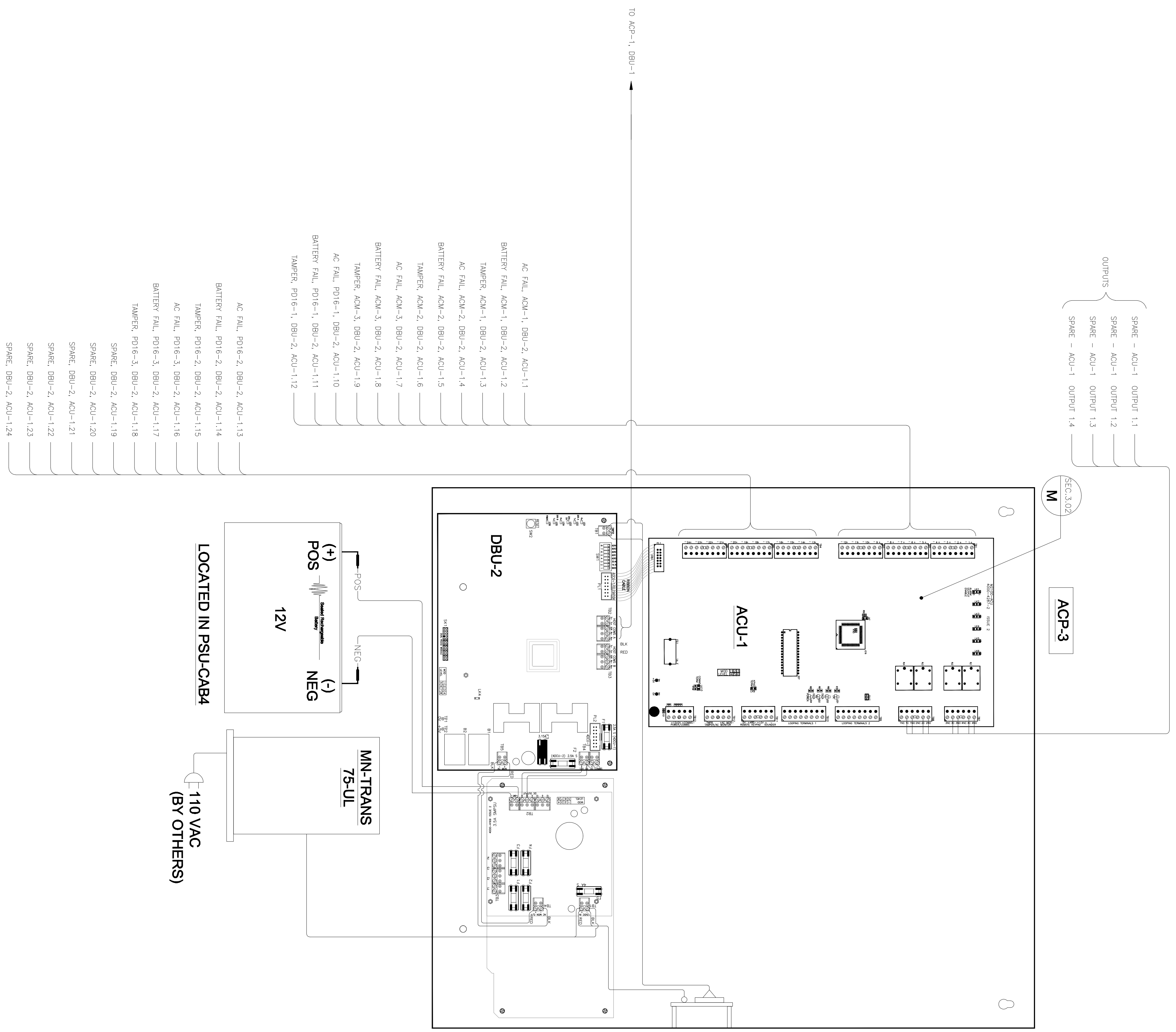


REVISION:  
 PROJECT NO: 0701200  
 DATE: 01/31/11  
 SCALE: AS NOTED

DRAWN BY: SEC, MK  
 CHECKED BY: CM

SHEET TITLE

**ACAMS POINT-TO-POINT  
 WIRING DIAGRAM  
 (CONTD.)**



- OUTPUTS
- SPARE - ACU-1 OUTPUT 1.1
  - SPARE - ACU-1 OUTPUT 1.2
  - SPARE - ACU-1 OUTPUT 1.3
  - SPARE - ACU-1 OUTPUT 1.4

- AC FAIL, ACU-1, DBU-2, ACU-1.1
- BATTERY FAIL, ACU-1, DBU-2, ACU-1.2
- TAMPER, ACU-1, DBU-2, ACU-1.3
- AC FAIL, ACU-2, DBU-2, ACU-1.4
- BATTERY FAIL, ACU-2, DBU-2, ACU-1.5
- TAMPER, ACU-2, DBU-2, ACU-1.6
- AC FAIL, ACU-3, DBU-2, ACU-1.7
- BATTERY FAIL, ACU-3, DBU-2, ACU-1.8
- TAMPER, ACU-3, DBU-2, ACU-1.9
- AC FAIL, DBU-1, DBU-2, ACU-1.10
- BATTERY FAIL, DBU-1, DBU-2, ACU-1.11
- TAMPER, DBU-1, DBU-2, ACU-1.12

- AC FAIL, DBU-2, DBU-2, ACU-1.13
- BATTERY FAIL, DBU-2, DBU-2, ACU-1.14
- TAMPER, DBU-2, DBU-2, ACU-1.15
- AC FAIL, DBU-3, DBU-2, ACU-1.16
- BATTERY FAIL, DBU-3, DBU-2, ACU-1.17
- TAMPER, DBU-3, DBU-2, ACU-1.18
- SPARE, DBU-2, ACU-1.19
- SPARE, DBU-2, ACU-1.20
- SPARE, DBU-2, ACU-1.21
- SPARE, DBU-2, ACU-1.22
- SPARE, DBU-2, ACU-1.23
- SPARE, DBU-2, ACU-1.24

**1 ACAMS POINT TO POINT WIRING DIAGRAM (CONTD.)**  
 SCALE: NTS

All drawings and wiring methods originating from this office are the property of WRNSSTUDIO. No part of this drawing may be reproduced without the written consent of WRNSSTUDIO.

This drawing is not to scale. The drawing has been reduced from its original size. All dimensions shall be as indicated. It is the user's responsibility to verify all dimensions.