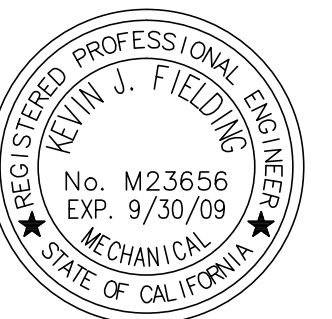


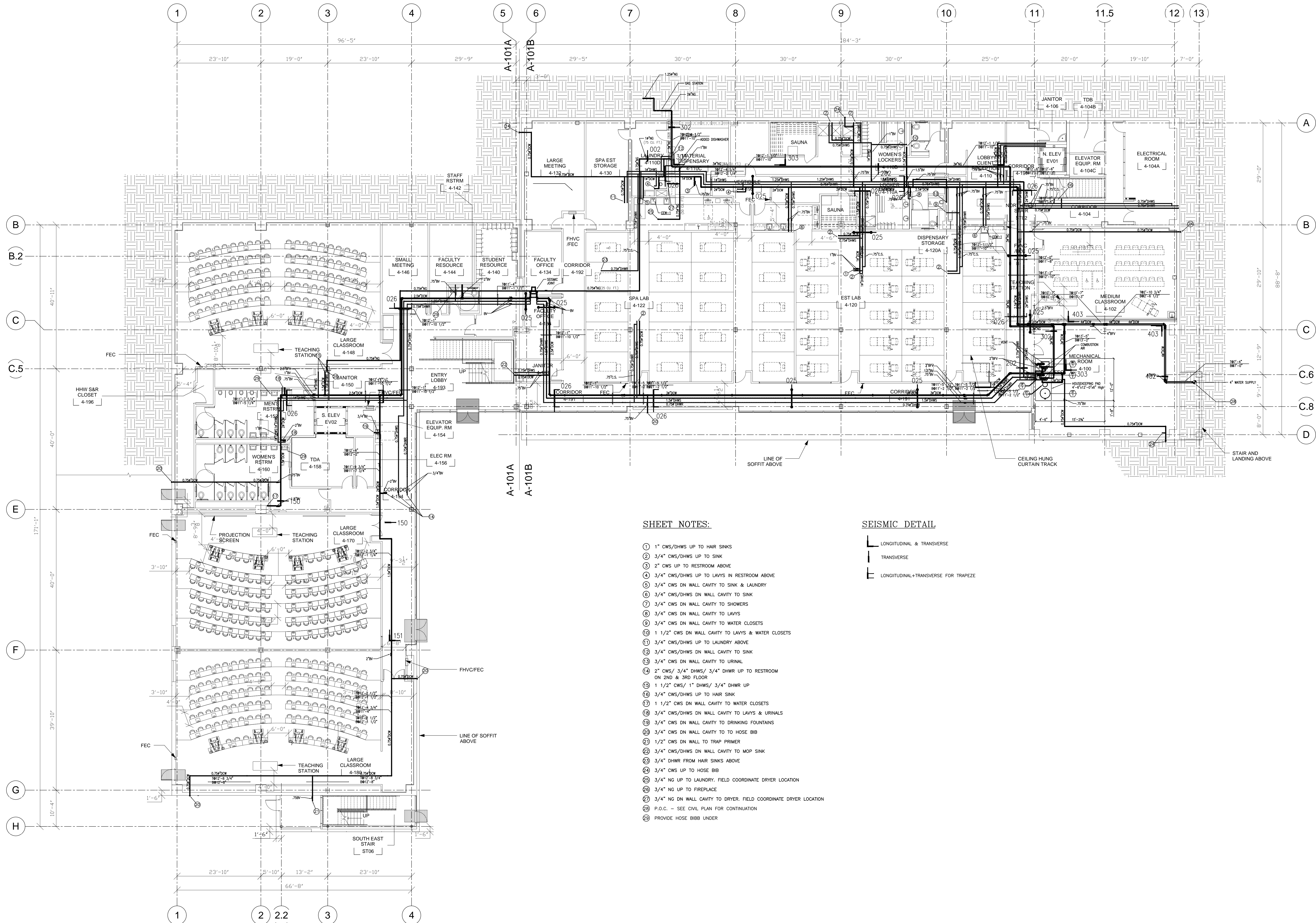
NO.	ISSUES/REVISIONS	DATE
	100% SCHEMATIC DESIGN	04/26/08
	50% DESIGN DEVELOPMENT	06/13/08
	100% DESIGN DEVELOPMENT	07/28/08
	INCREMENT 2 80% REVIEW	09/10/08
	DSA INCREMENT 2	
	STRUCTURE & GFCR PANELS	11/11/08
7	DSA INCREMENT #3 50% REVIEW	11/11/08
9	DSA INCREMENT #3 80% REVIEW	12/16/08
10	DSA INCREMENT #3	02/09/09
	TENANT IMPROVEMENT AND ROOFING SYSTEM	
12	HFOC REVIEW	04/30/09
14	DSA INCREMENT #3 BACKCHECK	05/12/09
	ISSUED FOR CONSTRUCTION	10/27/09
	AS-BUILT DRAWINGS	04/06/11

DIVISION OF THE STATE ARCHITECT
APPL # 01-110117
FILE # 41-C1
AC _____ FLS _____
SSS _____ DATE _____
IDENTIFICATION STAMP



SKYLINE COLLEGE
SAN MATEO COUNTY
COMMUNITY COLLEGE
DISTRICT
CIP2 DESIGN-BUILD
PROJECT
BUILDING 4
INCREMENT 3

DATE: 1-29-09
SCALE: 0' 4" 8" 12" 16" 24" 32"
SHEET TITLE:
SEISMIC, FIRST FLOOR DOMESTIC WATER AND NATURAL GAS PLUMBING PLAN
SHEET NO. P-501



SHEET NOTES:

- 1 1" CWS/DHWS UP TO HAIR SINKS
- 2 3/4" CWS/DHWS UP TO SINK
- 3 2" CWS UP TO RESTROOM ABOVE
- 4 3/4" CWS/DHWS UP TO LAVS IN RESTROOM ABOVE
- 5 3/4" CWS DN WALL CAVITY TO SINK & LAUNDRY
- 6 3/4" CWS/DHWS DN WALL CAVITY TO SINK
- 7 3/4" CWS DN WALL CAVITY TO SHOWERS
- 8 3/4" CWS DN WALL CAVITY TO LAVS
- 9 3/4" CWS DN WALL CAVITY TO WATER CLOSETS
- 10 1 1/2" CWS DN WALL CAVITY TO LAVS & WATER CLOSETS
- 11 3/4" CWS/DHWS UP TO LAUNDRY ABOVE
- 12 3/4" CWS/DHWS DN WALL CAVITY TO SINK
- 13 3/4" CWS DN WALL CAVITY TO URINAL
- 14 2" CWS/ 3/4" DHWS/ 3/4" DHWR UP TO RESTROOM ON 2ND & 3RD FLOOR
- 15 1 1/2" CWS/ 1" DHWS/ 3/4" DHWR UP
- 16 3/4" CWS/DHWS UP TO HAIR SINK
- 17 1 1/2" CWS DN WALL CAVITY TO WATER CLOSETS
- 18 3/4" CWS/DHWS DN WALL CAVITY TO LAVS & URINALS
- 19 3/4" CWS DN WALL CAVITY TO DRINKING FOUNTAINS
- 20 3/4" CWS DN WALL CAVITY TO HOSE BIB
- 21 1/2" CWS DN WALL TO TRAP PRIMER
- 22 3/4" CWS/DHWS DN WALL CAVITY TO MOP SINK
- 23 3/4" DHWR FROM HAIR SINKS ABOVE
- 24 3/4" CWS UP TO HOSE BIB
- 25 3/4" NG UP TO LAUNDRY, FIELD COORDINATE DRYER LOCATION
- 26 3/4" NG UP TO FIREPLACE
- 27 3/4" NG DN WALL CAVITY TO DRYER, FIELD COORDINATE DRYER LOCATION
- 28 P.O.C. - SEE CIVIL PLAN FOR CONTINUATION
- 29 PROVIDE HOSE BIB UNDER

SEISMIC DETAIL

