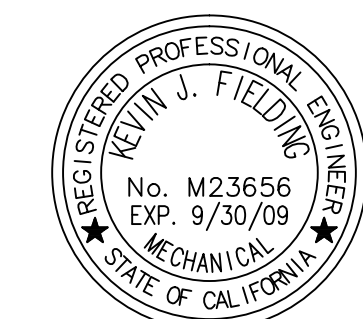


These drawings and specifications have been prepared by CMT for their exclusive use in accord with Sec. 6737.4 of the Professional Engineers Act of the State of California.

NO.	ISSUES/REVISIONS	DATE
	100% SCHEMATIC DESIGN	04/28/08
	50% DESIGN DEVELOPMENT	06/13/08
	100% DESIGN DEVELOPMENT	07/28/08
	INCREMENT 2 80% REVIEW	10/10/08
	DSA INCREMENT 2	
7	STRUCTURE & GFRG PANELS	11/11/08
	DSA INCREMENT #3 50% REVIEW	11/11/08
9	DSA INCREMENT #3 80% REVIEW	12/19/08
10	DSA INCREMENT #3	
	TENANT IMPROVEMENT AND ROOFING SYSTEM	02/09/09
12	HPOC REVIEW	04/30/09
14	DSA INCREMENT #3 BACKCHECK	05/12/09
	ISSUED FOR CONSTRUCTION	10/27/09
	AS BUILTS	12/15/10

DIVISION OF THE STATE ARCHITECT  
APPL # 01-110117  
FILE # 41-C1  
AC \_\_\_\_\_ FLS \_\_\_\_\_  
SSS \_\_\_\_\_ DATE \_\_\_\_\_  
IDENTIFICATION STAMP



SKYLINE COLLEGE  
SAN MATEO COUNTY  
COMMUNITY COLLEGE  
DISTRICT  
CIP2 DESIGN-BUILD  
PROJECT  
BUILDING 4  
INCREMENT 3

KEYPLAN

ISSUED FOR CONSTRUCTION

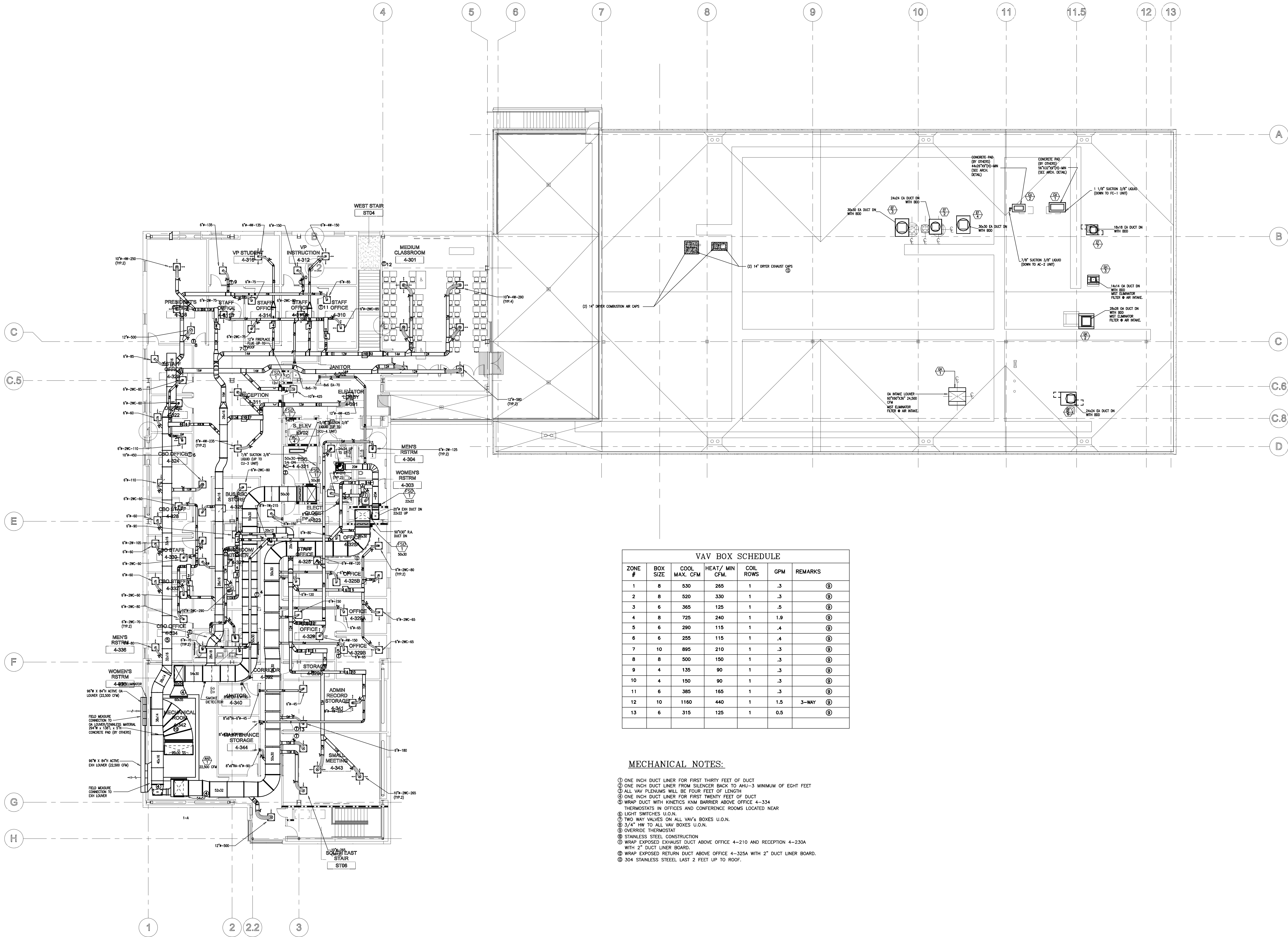
CMT PROJECT NO: 28212 DRAWN BY:  
DATE: 10/27/09 CHECKED BY:  
SCALE: 0' 8' 12' 16' 24' 32'

SHEET TITLE:

LEVEL 3  
MECHANICAL  
OVERALL  
FLOOR  
PLAN

SHEET NO:

M-103



VAV BOX SCHEDULE						
ZONE #	BOX SIZE	COOL MAX. CFM	HEAT/ MIN CFM	COIL ROWS	GPM	REMARKS
1	8	530	265	1	.3	①
2	8	520	330	1	.3	①
3	6	365	125	1	.5	①
4	8	725	240	1	1.9	①
5	6	290	115	1	.4	①
6	6	255	115	1	.4	①
7	10	895	210	1	.3	①
8	8	500	150	1	.3	①
9	4	135	90	1	.3	①
10	4	150	90	1	.3	①
11	6	385	165	1	.3	①
12	10	1160	440	1	1.5	3-WAY ①
13	6	315	125	1	0.5	①

- MECHANICAL NOTES:**
- ONE INCH DUCT LINER FOR FIRST THIRTY FEET OF DUCT
  - ONE INCH DUCT LINER FROM SILENCER BACK TO AHU-3 MINIMUM OF EIGHT FEET
  - ALL VAV FLENDAMS WILL BE FOUR FEET OF LENGTH
  - ONE INCH DUCT LINER FOR FIRST TWENTY FEET OF DUCT
  - WRAP DUCT WITH KINETICS KNM BARRIER ABOVE OFFICE 4-334
  - THERMOSTATS IN OFFICES AND CONFERENCE ROOMS LOCATED NEAR
  - LIGHT SWITCHES U.O.N.
  - TWO WAY VALVES ON ALL VAV'S BOXES U.O.N.
  - 3/4" HW TO ALL VAV BOXES U.O.N.
  - OVERRIDE THERMOSTAT
  - STAINLESS STEEL CONSTRUCTION
  - WRAP EXPOSED EXHAUST DUCT ABOVE OFFICE 4-210 AND RECEPTION 4-230A WITH 2" DUCT LINER BOARD.
  - WRAP EXPOSED RETURN DUCT ABOVE OFFICE 4-325A WITH 2" DUCT LINER BOARD.
  - 304 STAINLESS STEEL LAST 2 FEET UP TO ROOF.