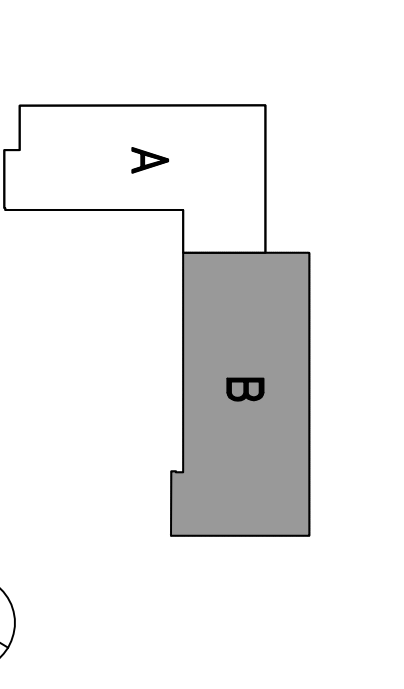


NO.	DESCRIPTION	DATE
01	ISSUE FOR PERMITS	04/20/08
02	100% SCHEMATIC DESIGN	04/20/08
03	50% DESIGN DEVELOPMENT	06/10/08
04	30% DESIGN DEVELOPMENT	07/28/08
05	20% DESIGN DEVELOPMENT	10/10/08
06	15% DESIGN DEVELOPMENT	11/11/08
07	CONSTRUCTION DOCUMENTS	11/11/08
08	INTERNAL PERMITS REVIEW INCREMENT 3	12/22/08
09	DATA INCORPORATED AS REVISED PERMITS AND RECORD DRAWINGS	04/24/09
10	DATA INCORPORATED AS REVISED PERMITS AND RECORD DRAWINGS	04/24/09
11	ISSUED TO FIELD	05/12/09
12	RECORD DRAWINGS	12/27/10

DIVISION OF THE STATE ARCHITECT
 APR # 01-110117
 FILE # 41-C1
 AC _____ TS _____
 SSS _____ DATE _____
 IDENTIFICATION STAMP

Increment 3

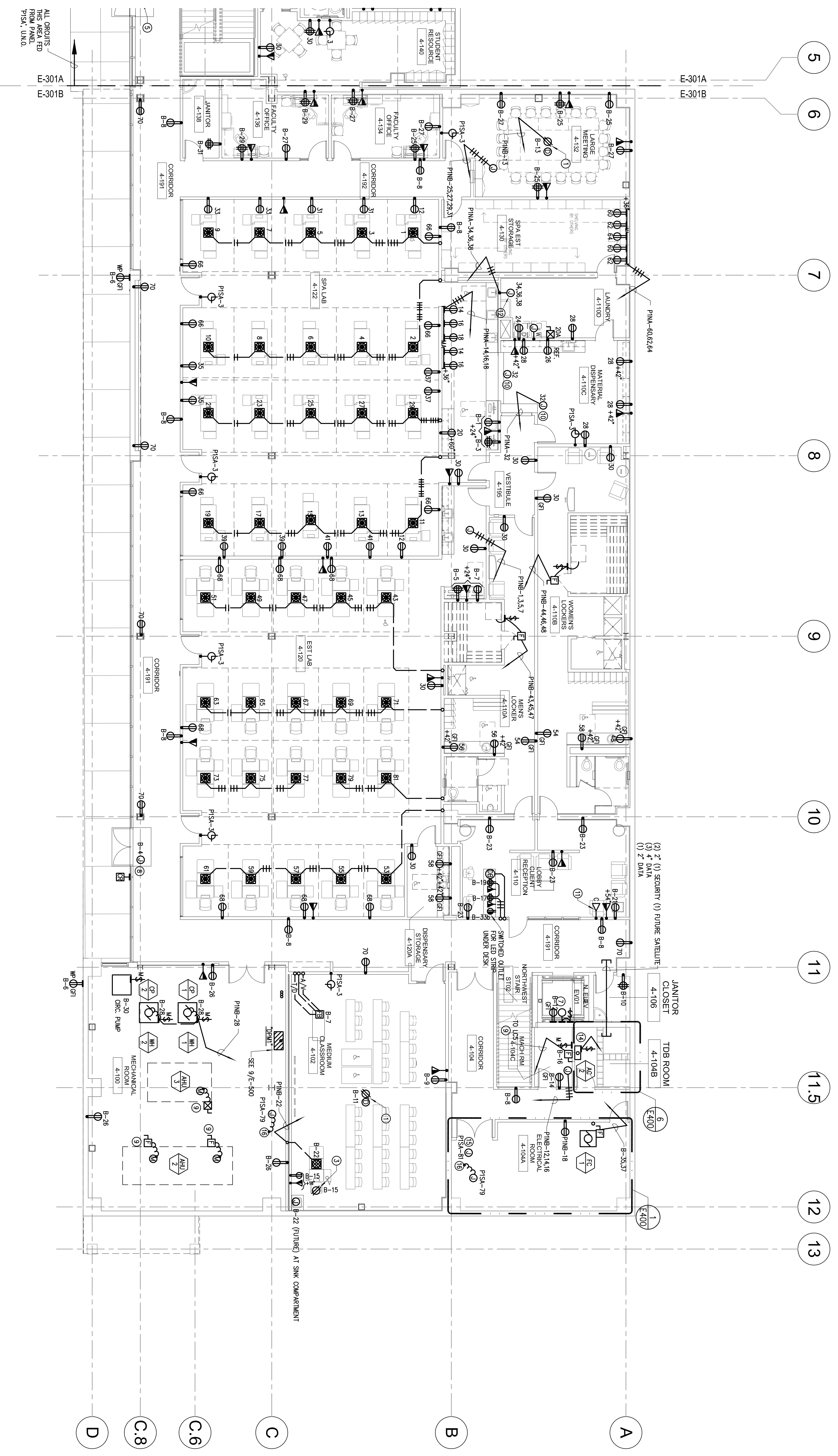
SKYLINE COLLEGE
 SAN MATEO COUNTY
 DISTRICT COLLEGE
CIP2 DESIGN-BUILD PROJECT
BUILDING 4 INCREMENT 3



PROJECT NO: SPT057010 DRAWN BY: JB
 DATE: 04/28/08 CHECKED BY: ALS
 SCALE: 3/32"=1'-0"
 SHEET TITLE:

LEVEL 1 POWER AND SIGNAL PLAN
SECTOR B

SHEET NO: **E-301B**



- SHEET NOTES**
- A. REFER TO ARCHITECTURAL DRAWINGS FOR EXACT DIMENSIONS AND MOUNTING HEIGHTS.
 - B. ROUTES WITHOUT PANEL DESIGNATIONS REFER TO PANEL "PMB," WITH DESIGNATION "B" ROUTE TO PANEL "PMB".
 1. CONNECT CEILING MOUNTED PROJECTION.
 2. CONNECT PROJECTION SCREEN AS REQUIRED.
 3. CEILING RECEPTACLE FOR FLOOR CAMERA.
 4. J-BOX WITH 3/4" FC. FOR SECURITY CAMERA. COORDINATE REQUIREMENTS WITH SECURITY DRAWINGS.
 5. 120V CONNECTION FOR POWER DOOR ASSY. COORDINATE WITH SECURITY.
 6. NOT USED.
 7. IN ELEVATOR PIT. PROVIDE WALL PACK LIGHT, FOUR JELLY JAR, (1)-28WCT, 120V OR EQUAL.
 8. FOR LOCAL DOOR POWER SUPPLY CONNECTION, REFER TO SECURITY DRAWINGS.
 9. SEE SINGLE LINE DIAGRAM, SHEET E-100.
 10. CONNECT COUNTER DOOR OPERATOR AS REQUIRED.
 11. PLAT PANEL DISPLAY. COORDINATE CONNECTION WITH AV CONSULTANT.
 12. CONNECT WASHER AS REQUIRED.
 13. NOT USED.
 14. 2012, 1172, 1177C, TO OI-2 ON ROOF.
 15. CONNECT TO FREE ALARM ROOSTER PANEL.
 16. PROVIDE 120V POWER TO (2) BUS POWER SUPPLIES IN THIS ROOM. COORDINATE LOCATION WITH CONTRACTORS.

LEVEL 1 - POWER AND SIGNAL PLAN - SECTOR B
 SCALE: 1/8"=1'-0"

All drawings and orders must be submitted to the architect and approved by the architect before construction. The architect is not responsible for the construction of the project. The contractor is responsible for the construction of the project. The architect is not responsible for the construction of the project. The contractor is responsible for the construction of the project.