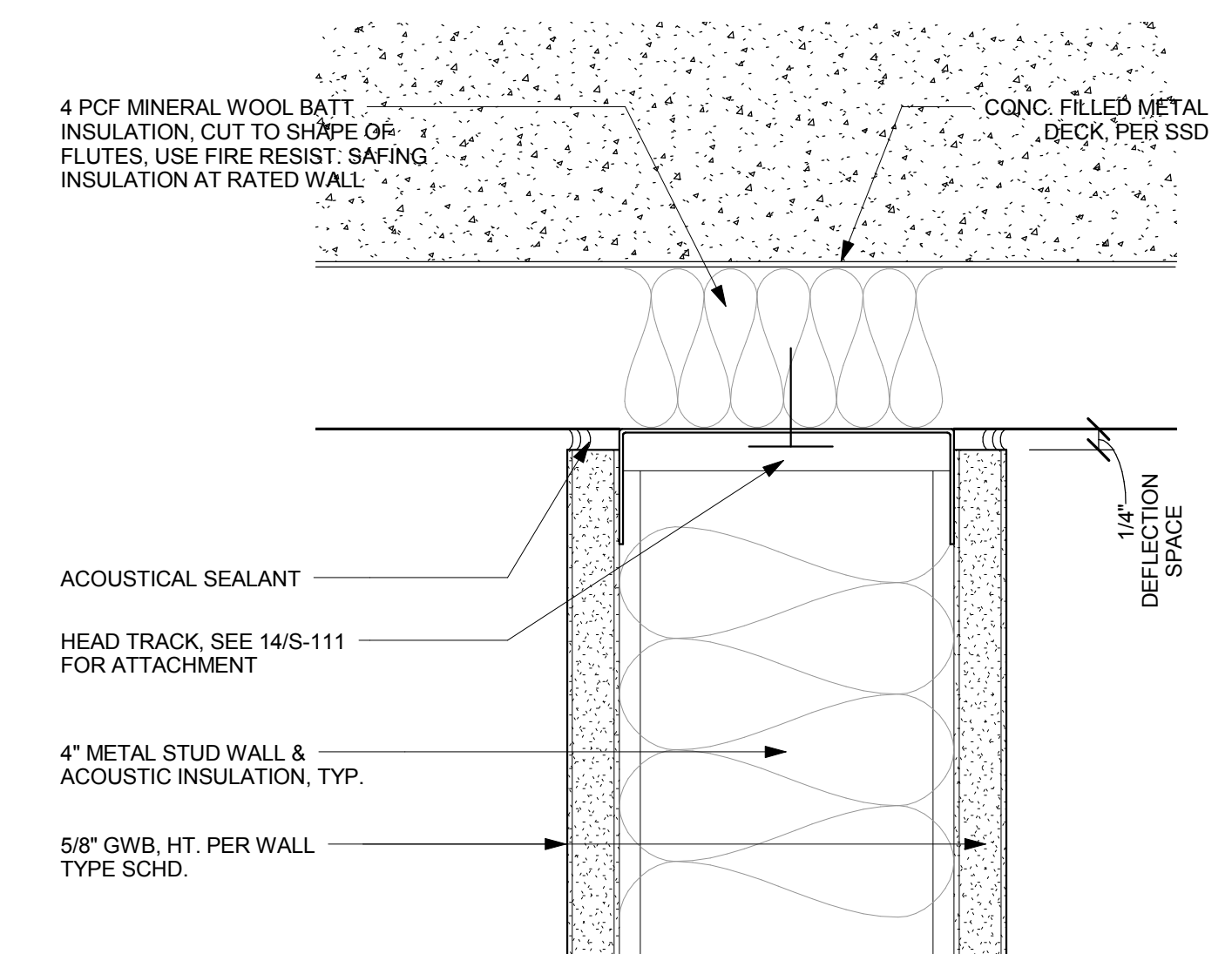
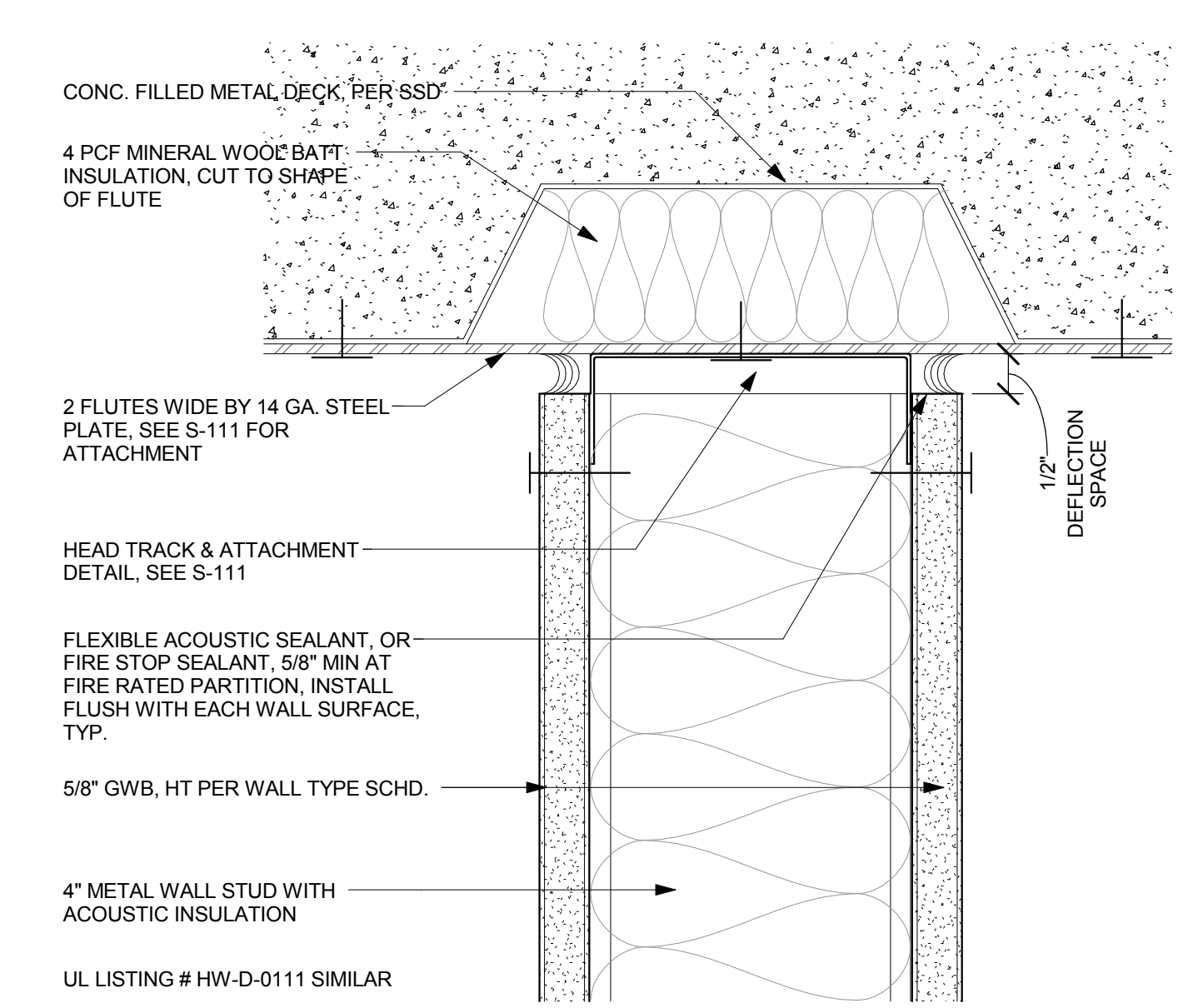


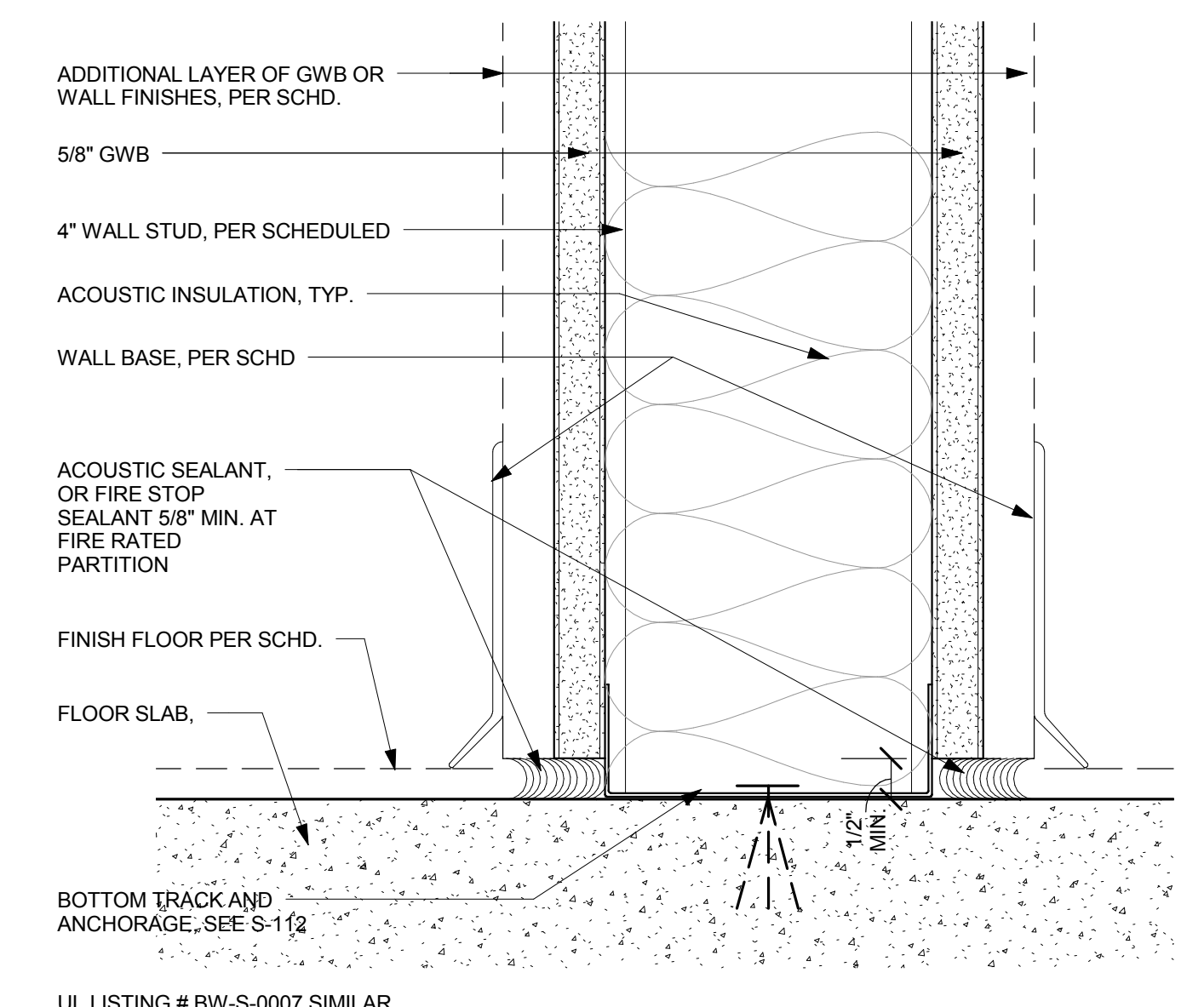
11 COLUMN FURRING AT MECH. ROOM
1 1/2" = 1'-0"



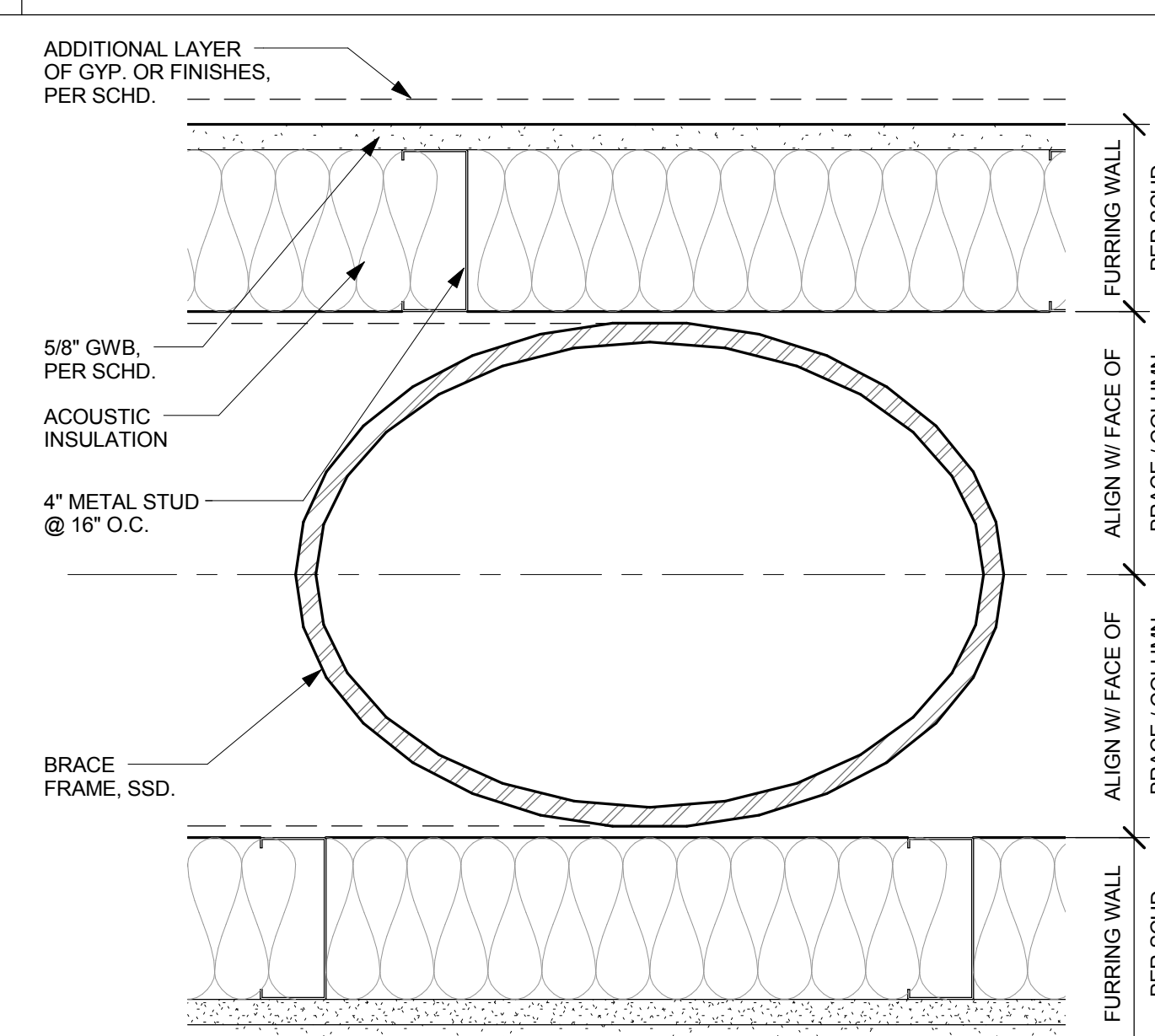
4 COLUMN FURRING AT MECH. ROOM
1 1/2" = 1'-0"



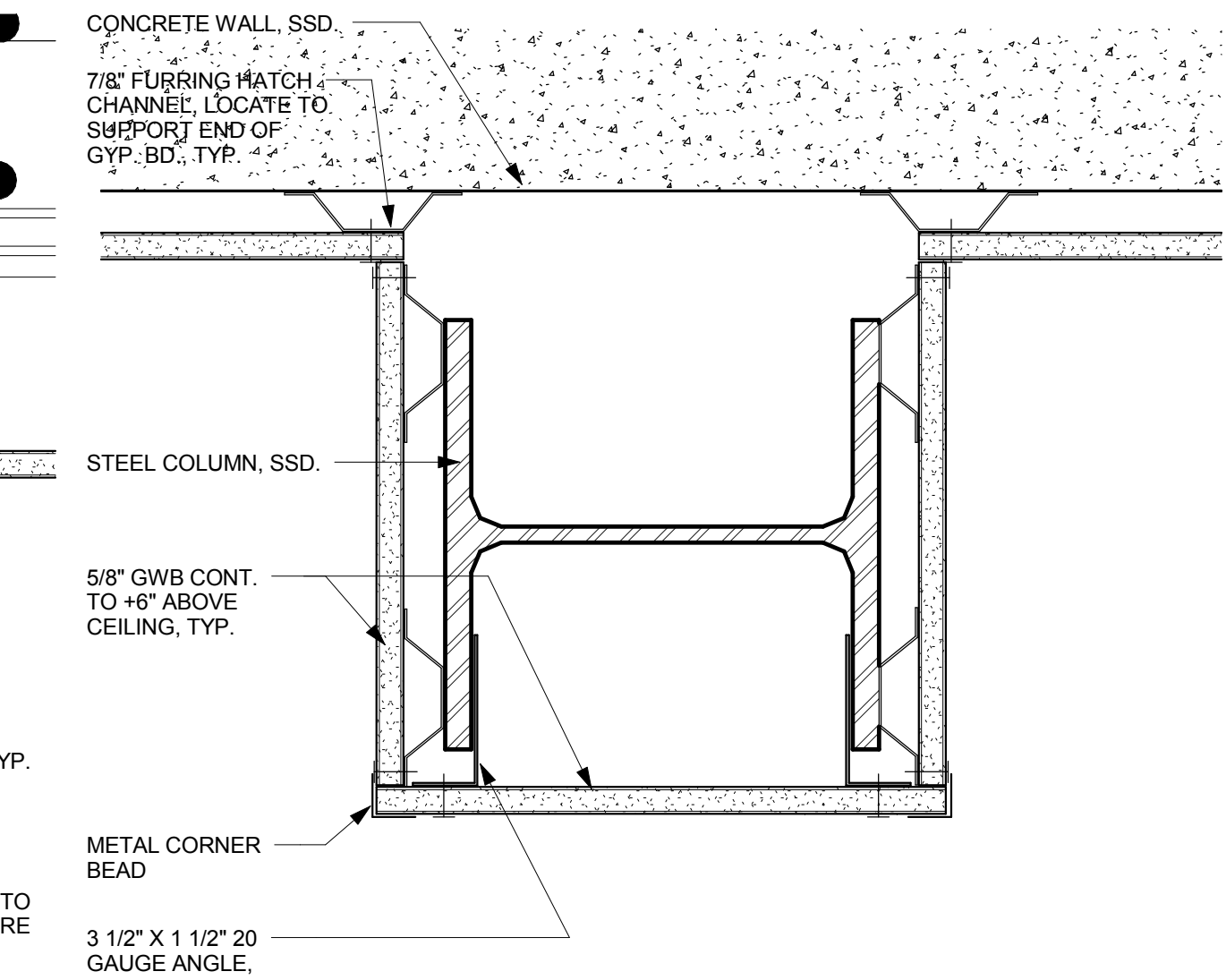
3 WALL HEAD - PERP. TO DECK
6" = 1'-0"



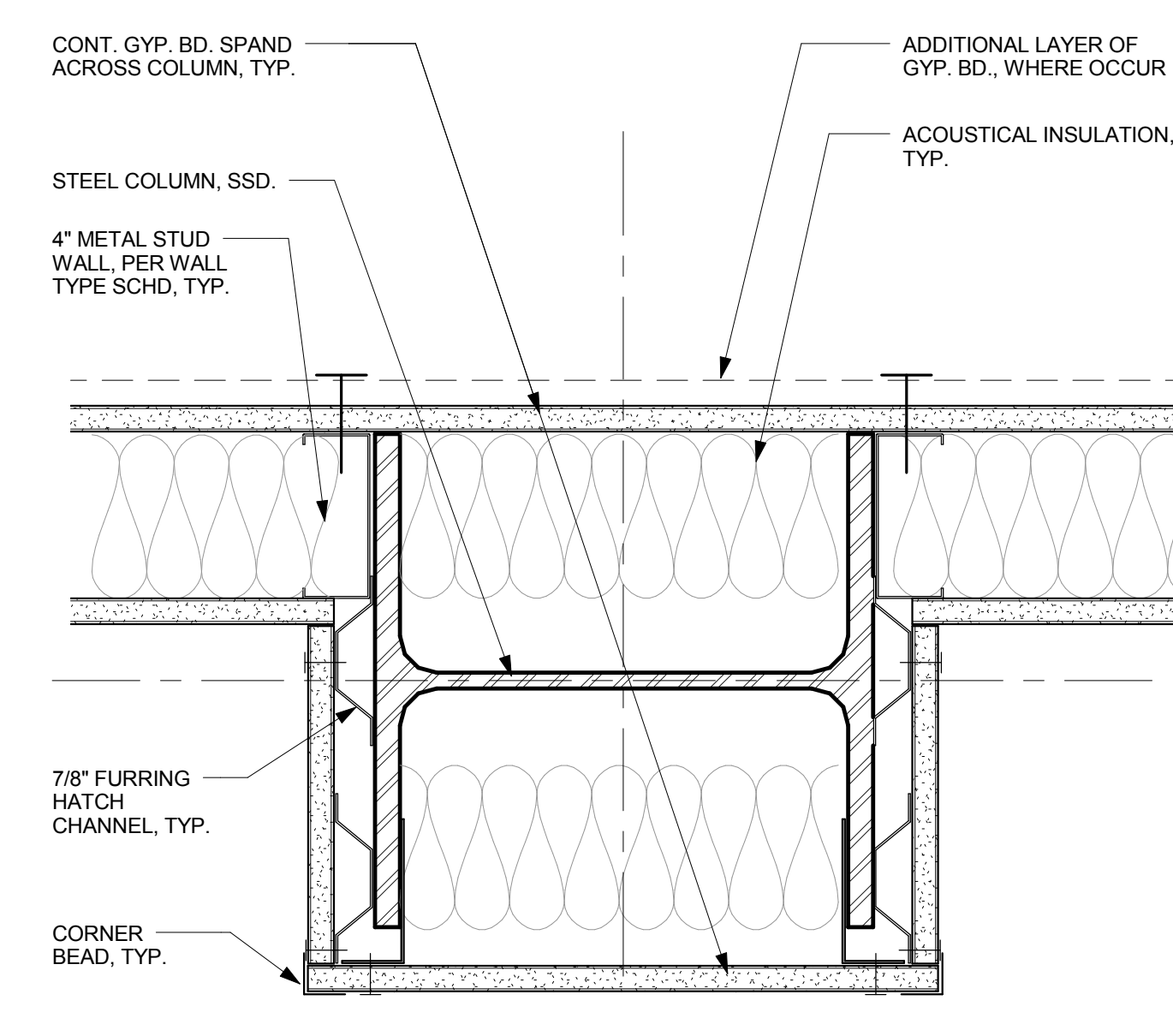
2 WALL HEAD - PARALLEL TO DECK
6" = 1'-0"



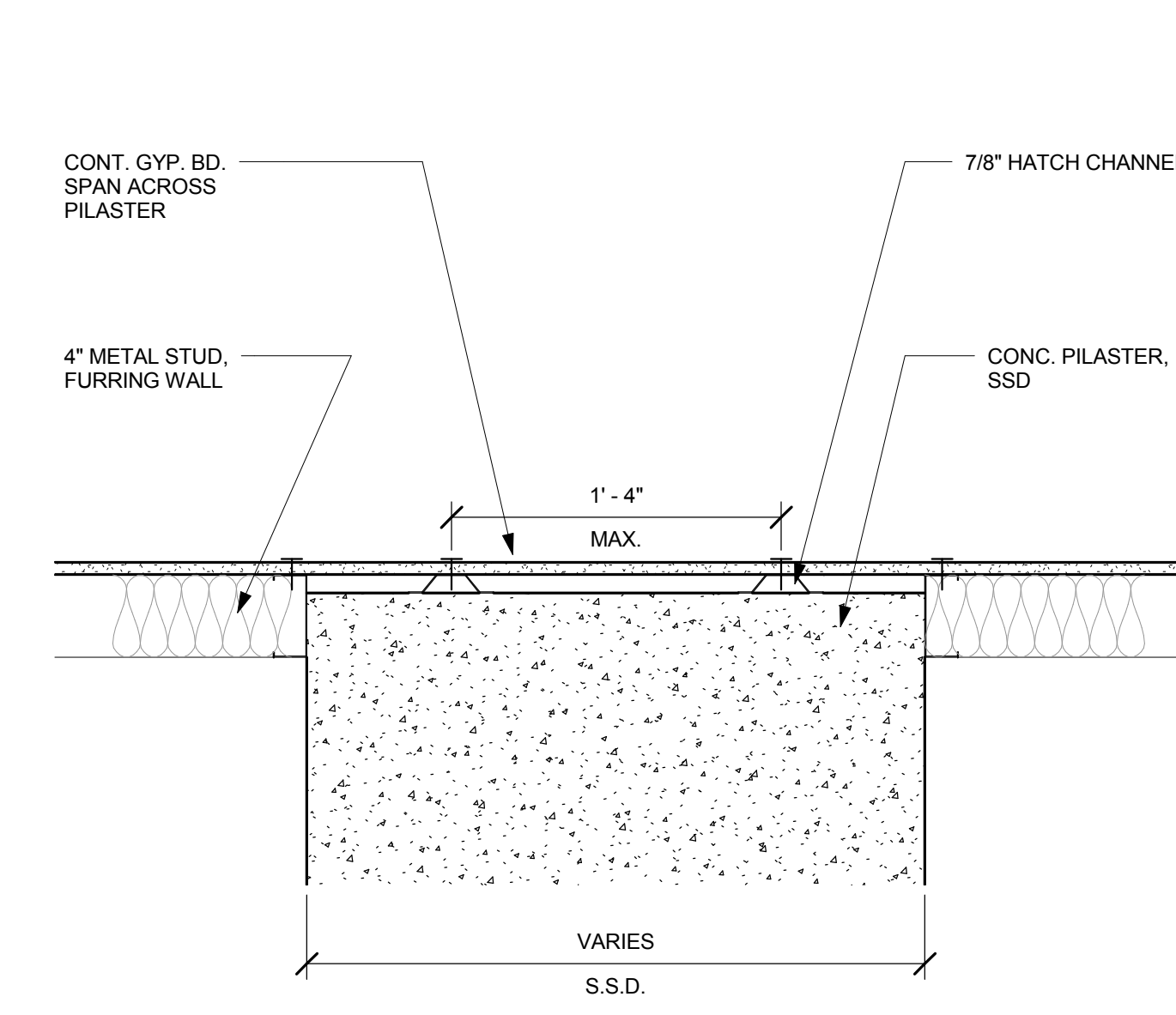
8 WALL FURRING AT BRACE FRAME
3" = 1'-0"



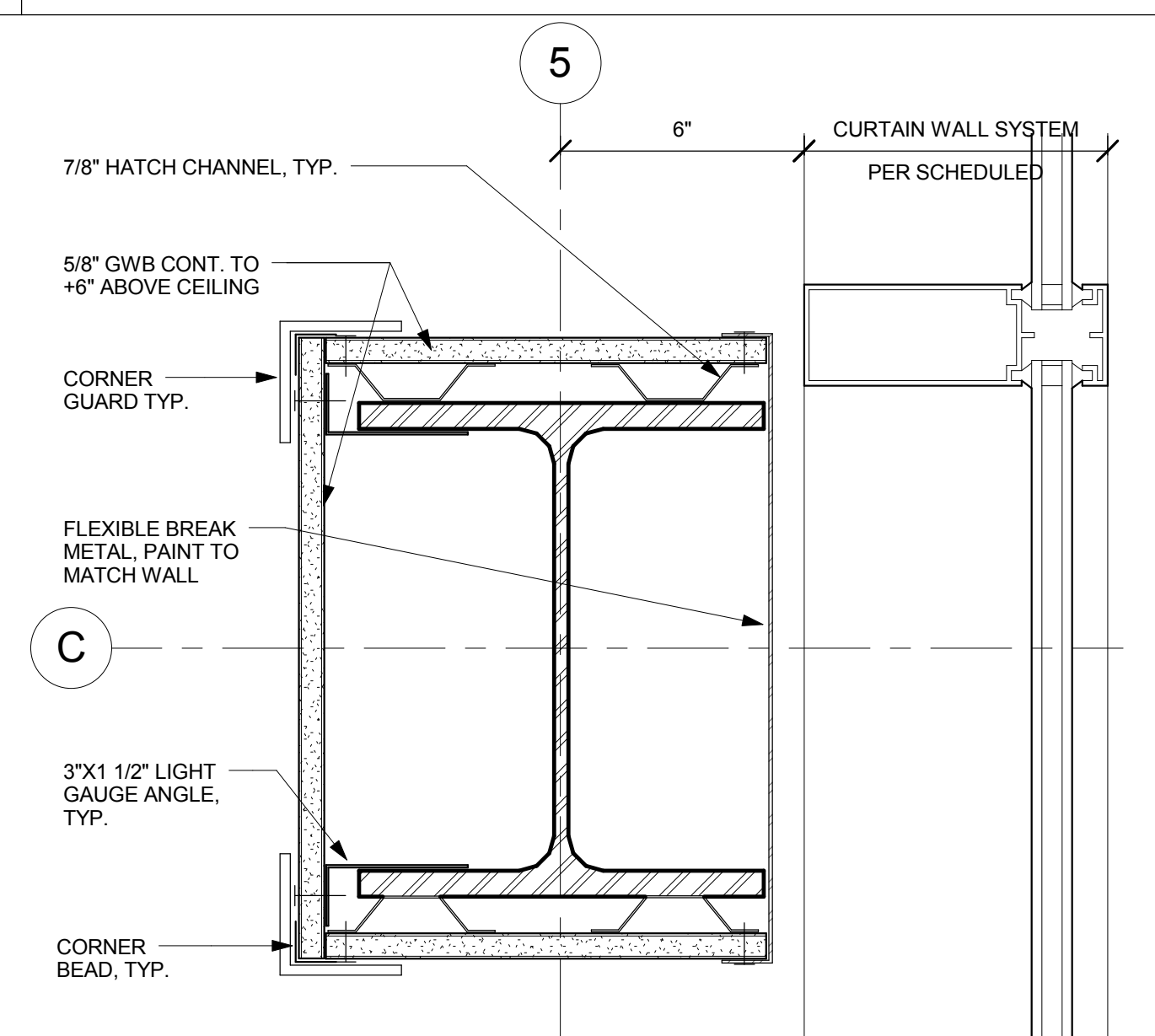
7 COLUMN FURRING - AT CONC. WALL
3" = 1'-0"



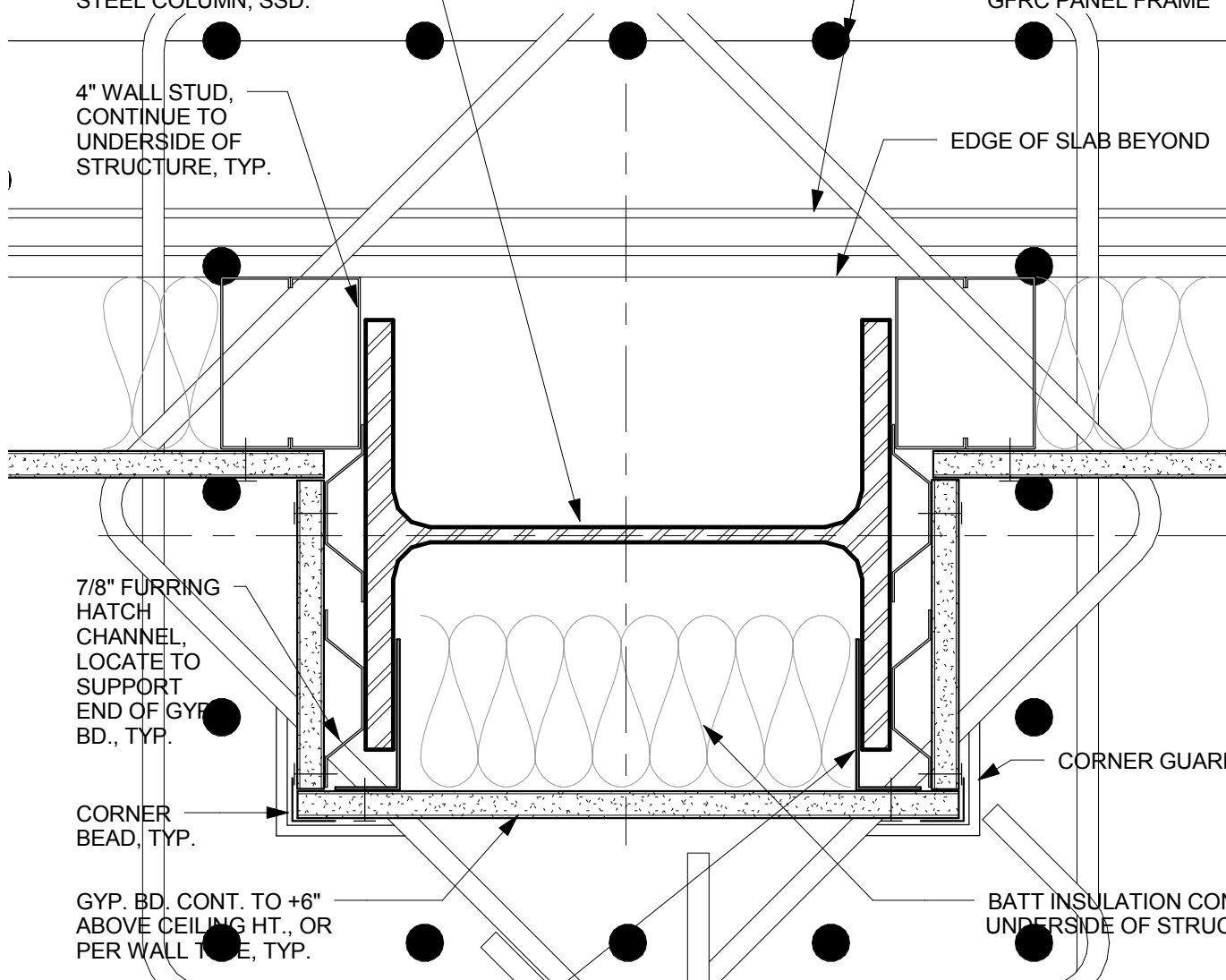
6 COLUMN FURRING - AT INT. WALL
3" = 1'-0"



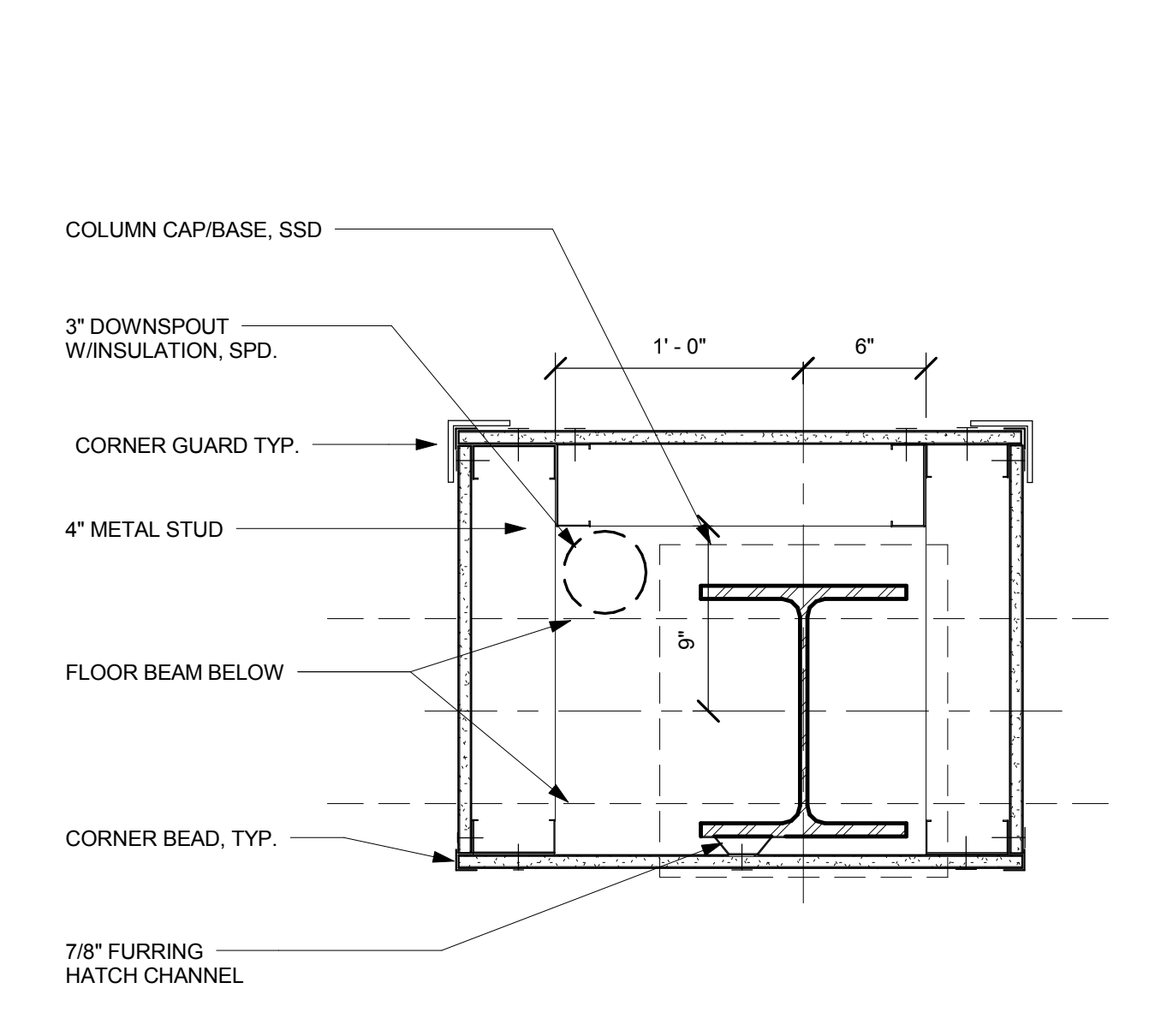
5 FURRING AT PILASTER
1 1/2" = 1'-0"



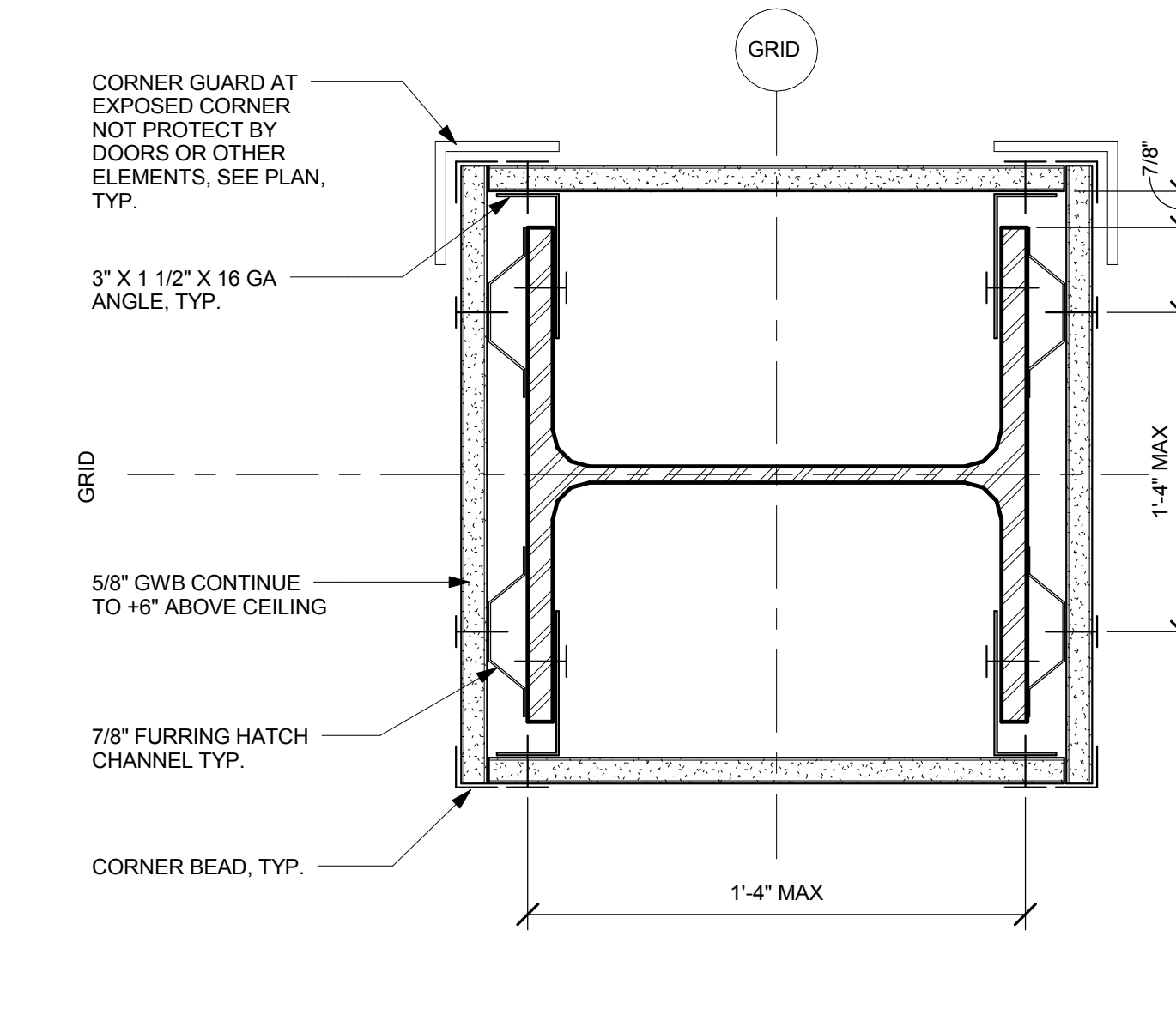
12 COLUMN FURRING - WITH METAL CAB
3" = 1'-0"



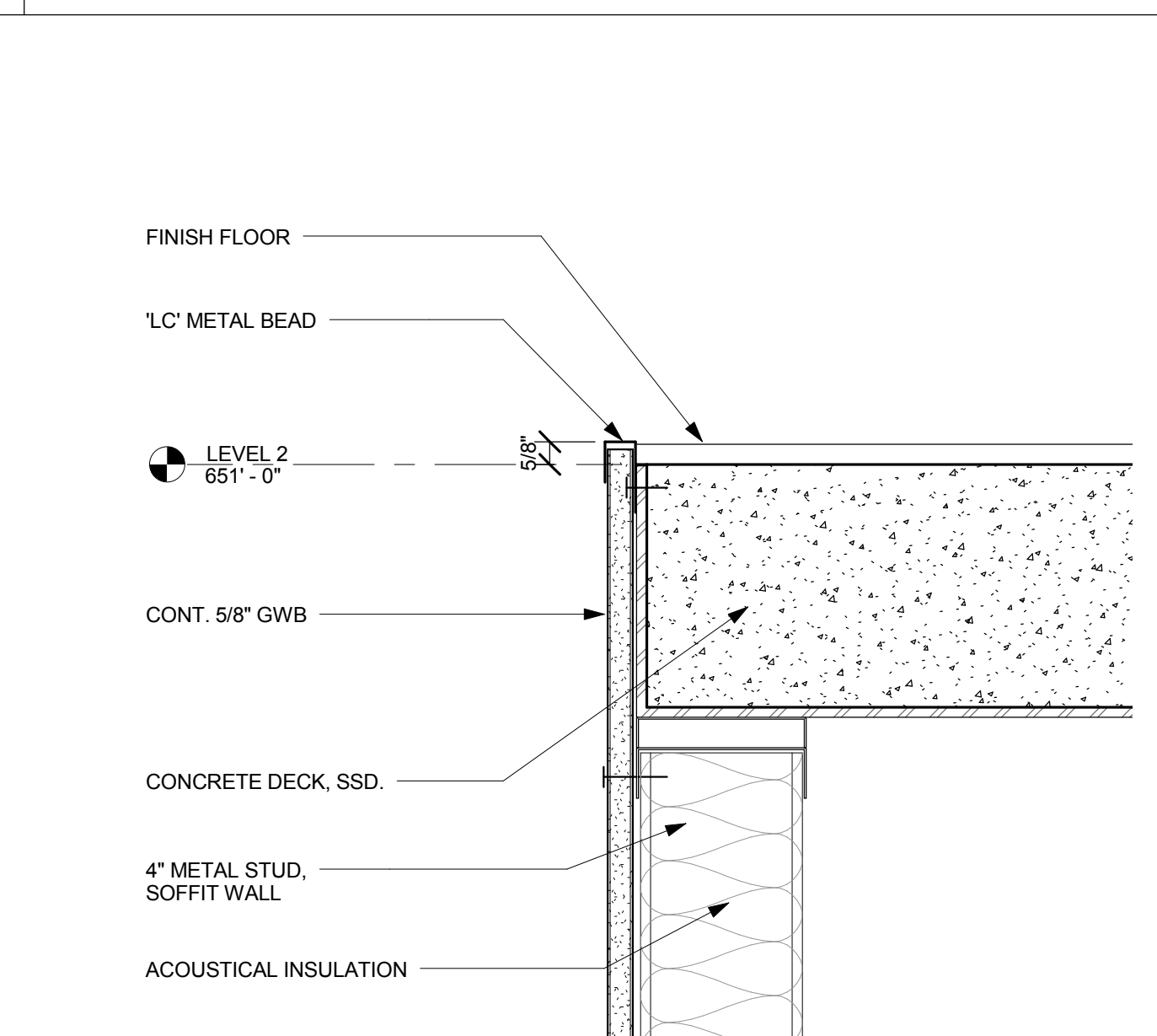
11 COLUMN FURRING - AT GFRC
3" = 1'-0"



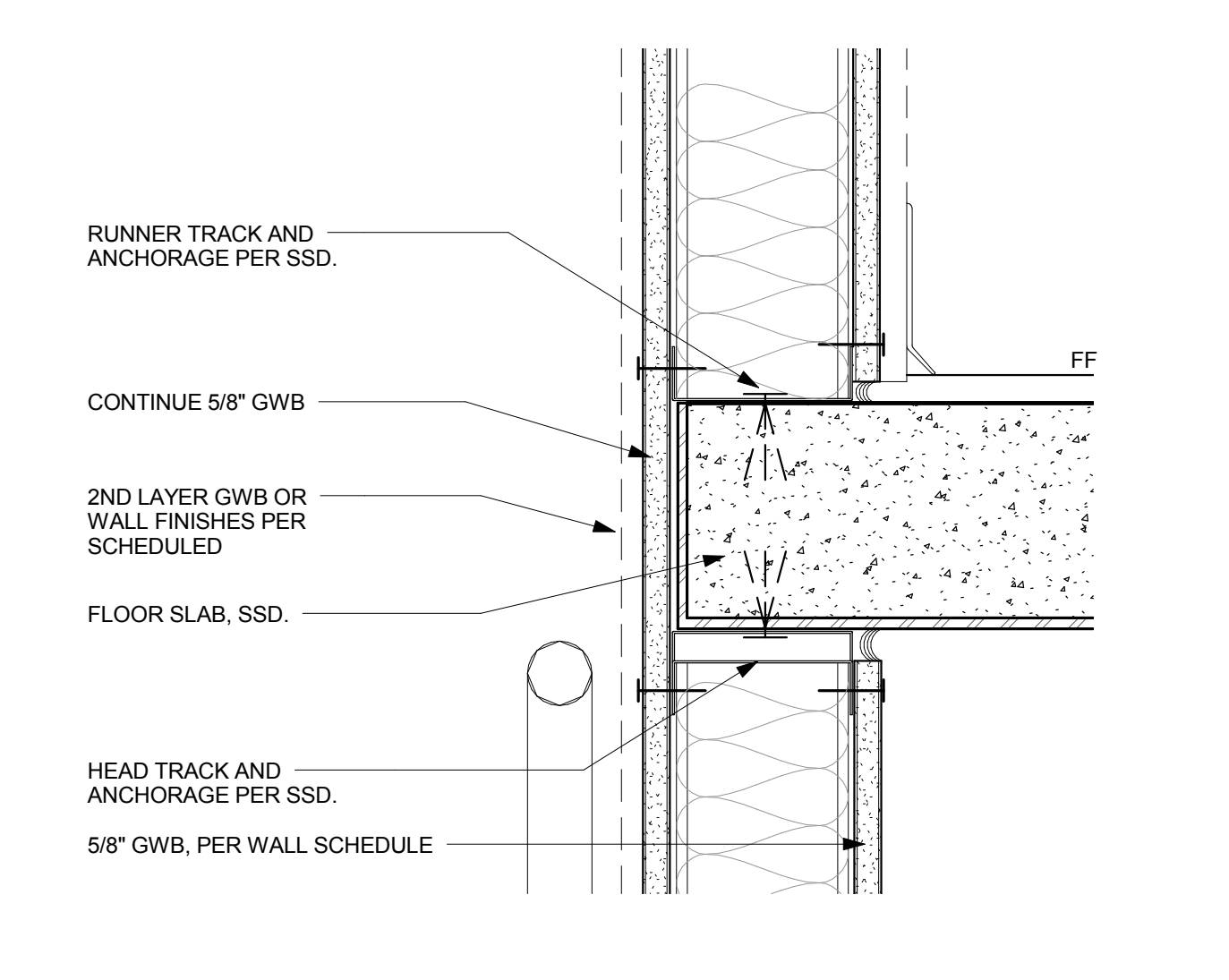
10 COLUMN FURRING - AT DOWNSPOUT
1 1/2" = 1'-0"



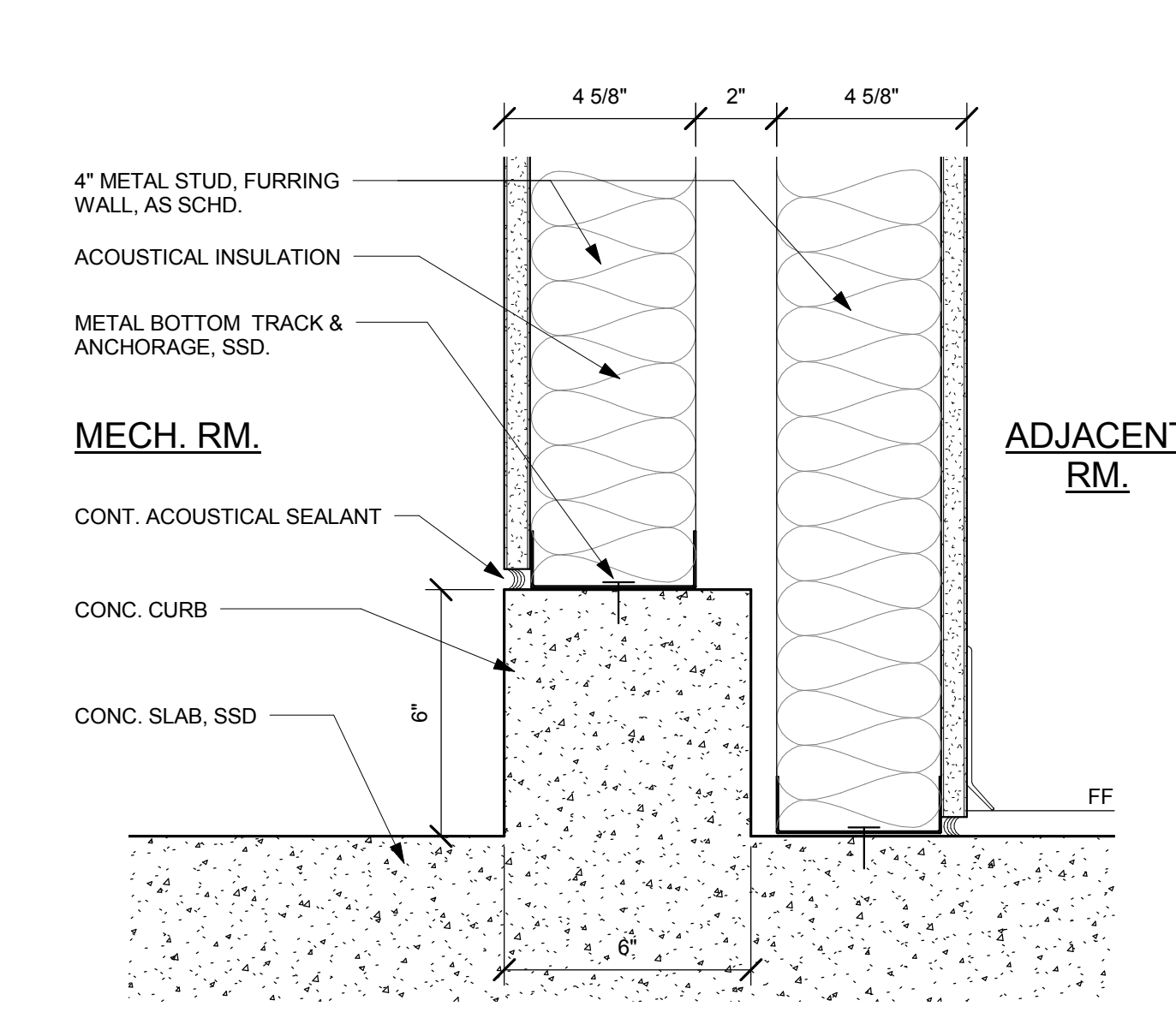
9 COLUMN FURRING, TYP.
3" = 1'-0"



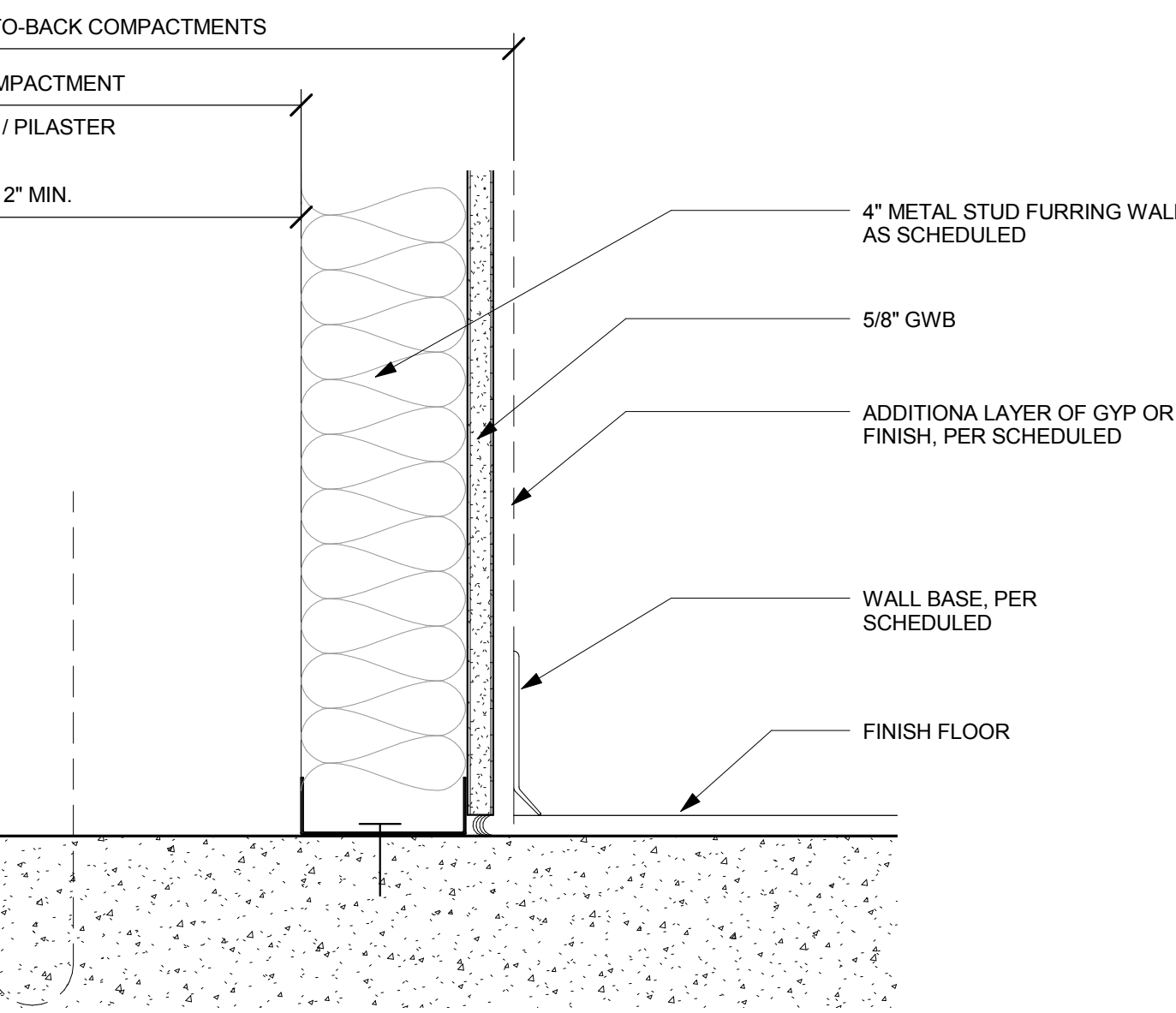
16 EDGE OF SLAB - AT LOBBY
3" = 1'-0"



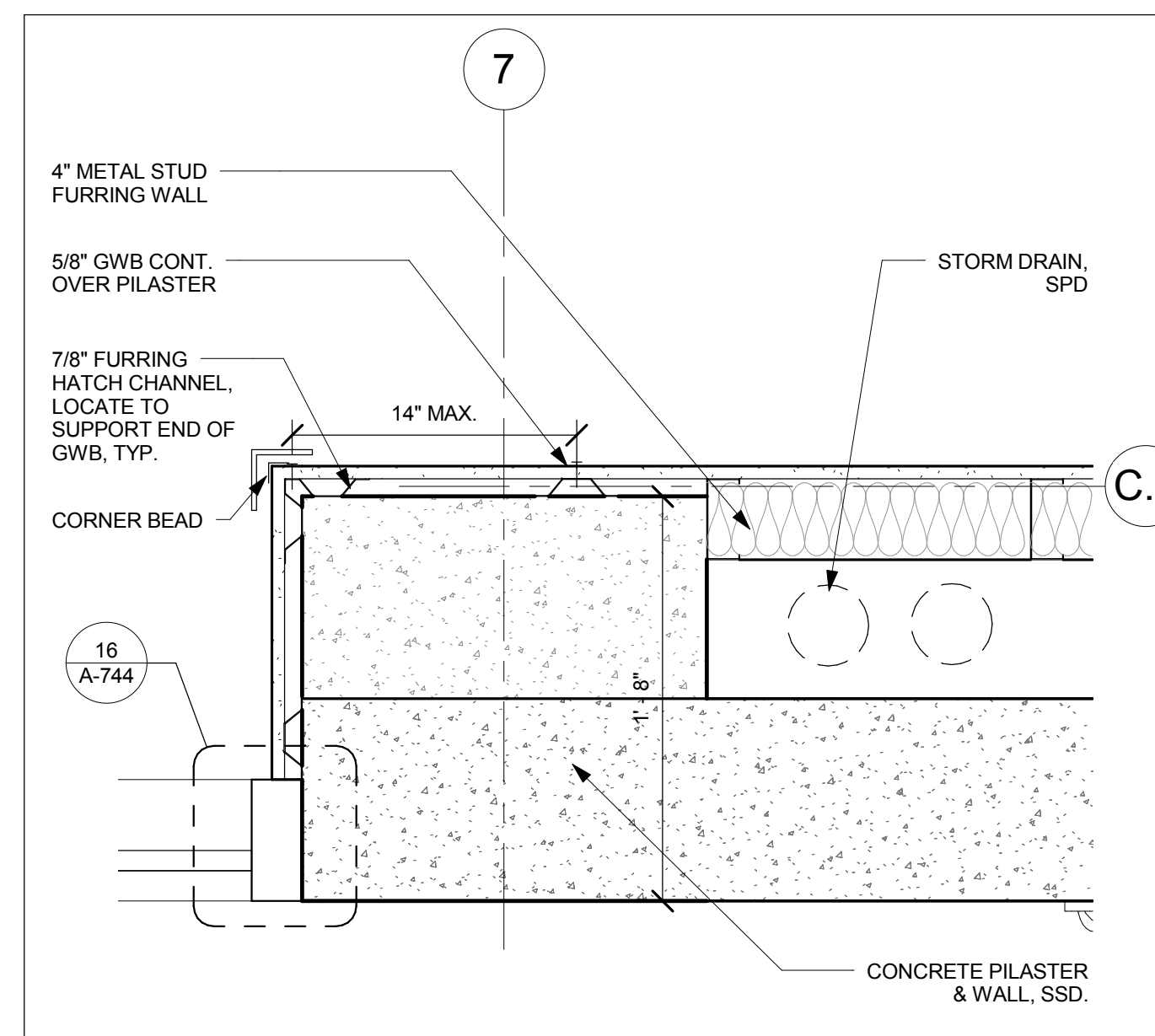
15 EDGE OF SLAB FINISHES - AT STAIRS
3" = 1'-0"



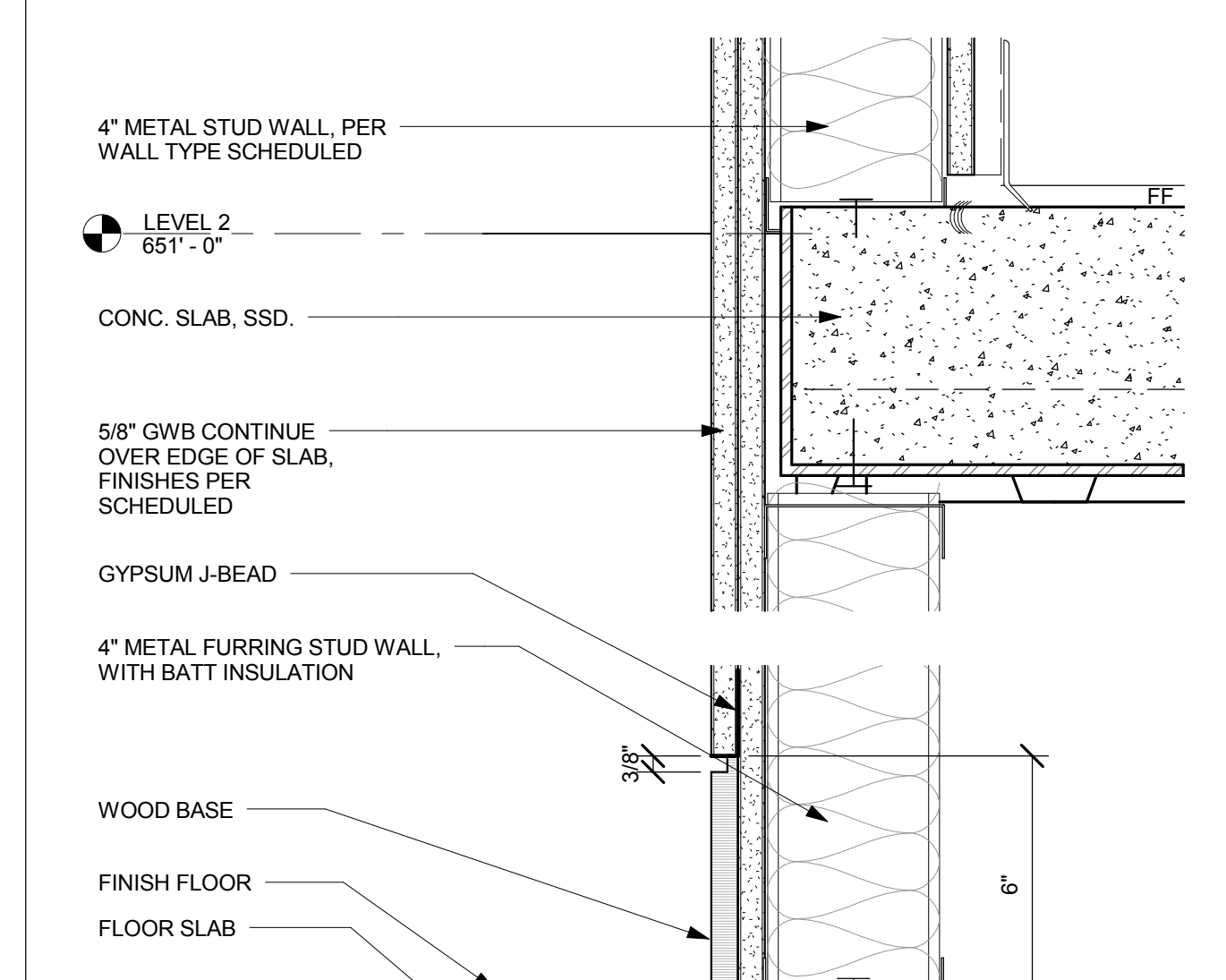
14 CONC. CURB AT DOUBLE WALL
3" = 1'-0"



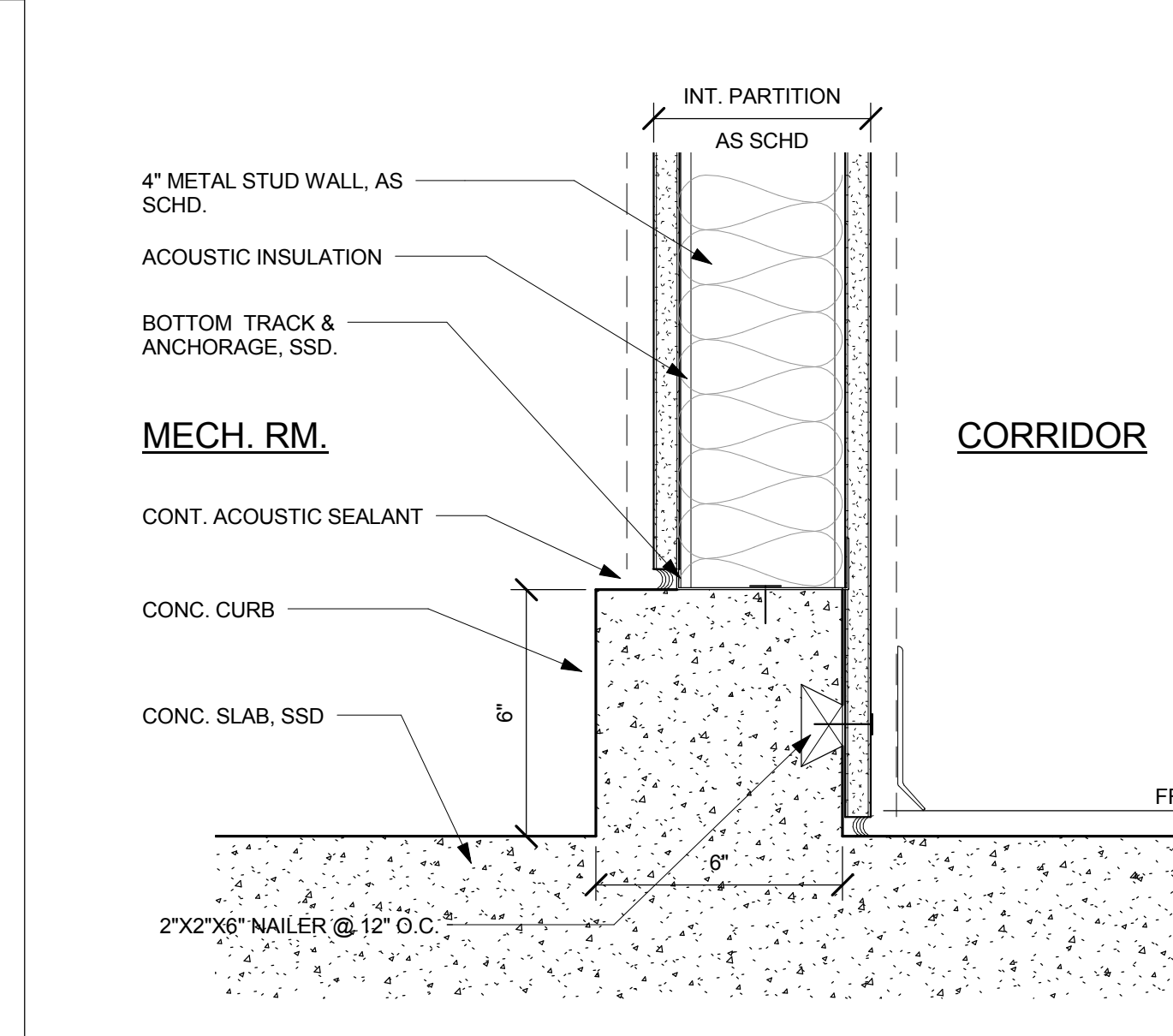
17 PLUMBING WALL
3" = 1'-0"



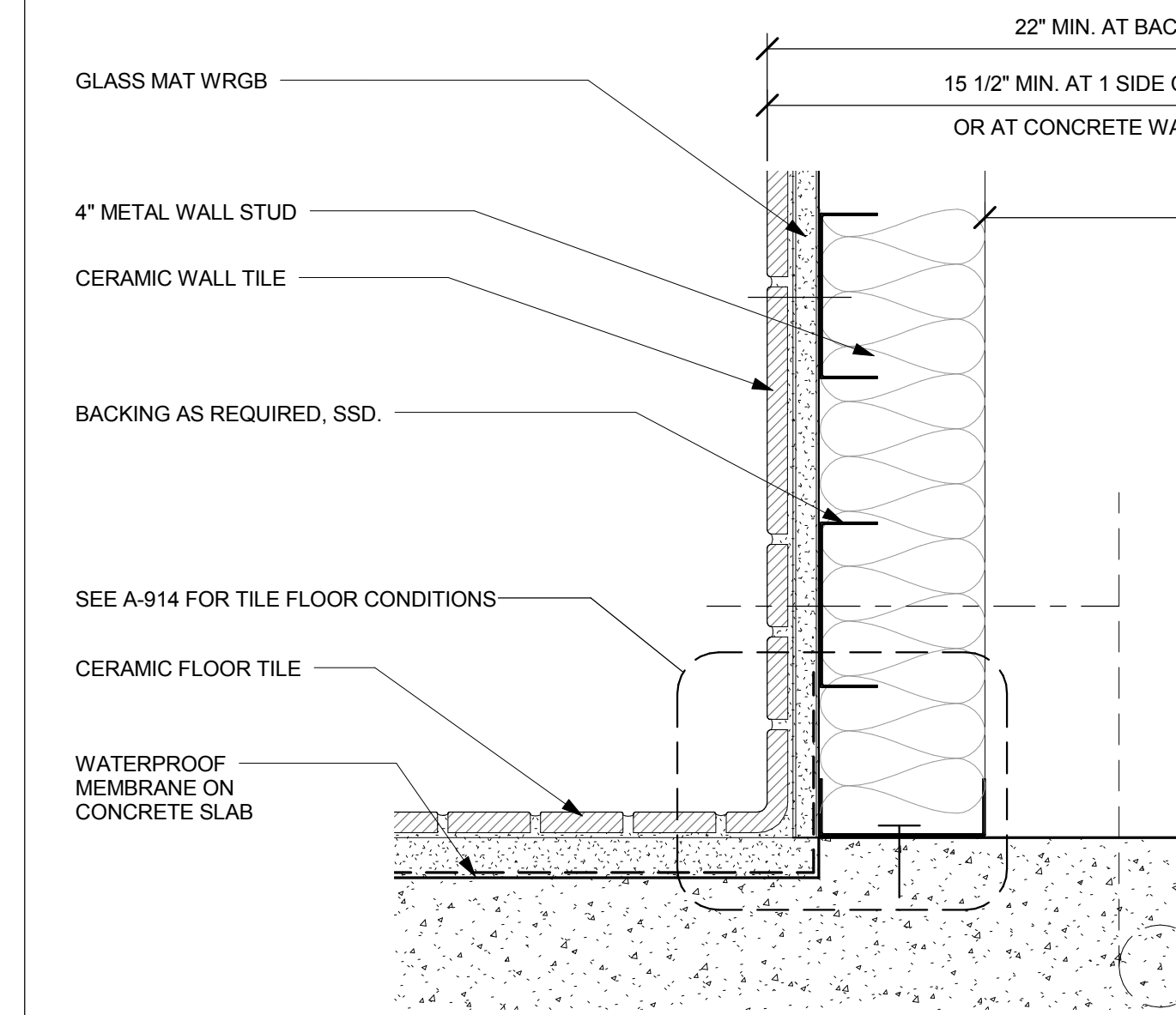
20 FURRING AT STORM DRAIN
1 1/2" = 1'-0"



19 WALL BASE AT LOBBY
3" = 1'-0"



18 CONC. CURB AT SINGLE WALL
3" = 1'-0"



17 PLUMBING WALL
3" = 1'-0"

All drawings and written material appearing herein constitute original and unpublished work of the Architect/Engineer and may not be duplicated, used or disclosed without consent of Architect/Engineer.

If this drawing is not 30"x42", then the drawing has been revised from its original size. Note: scales must be adjusted. This line should be equal to one inch.