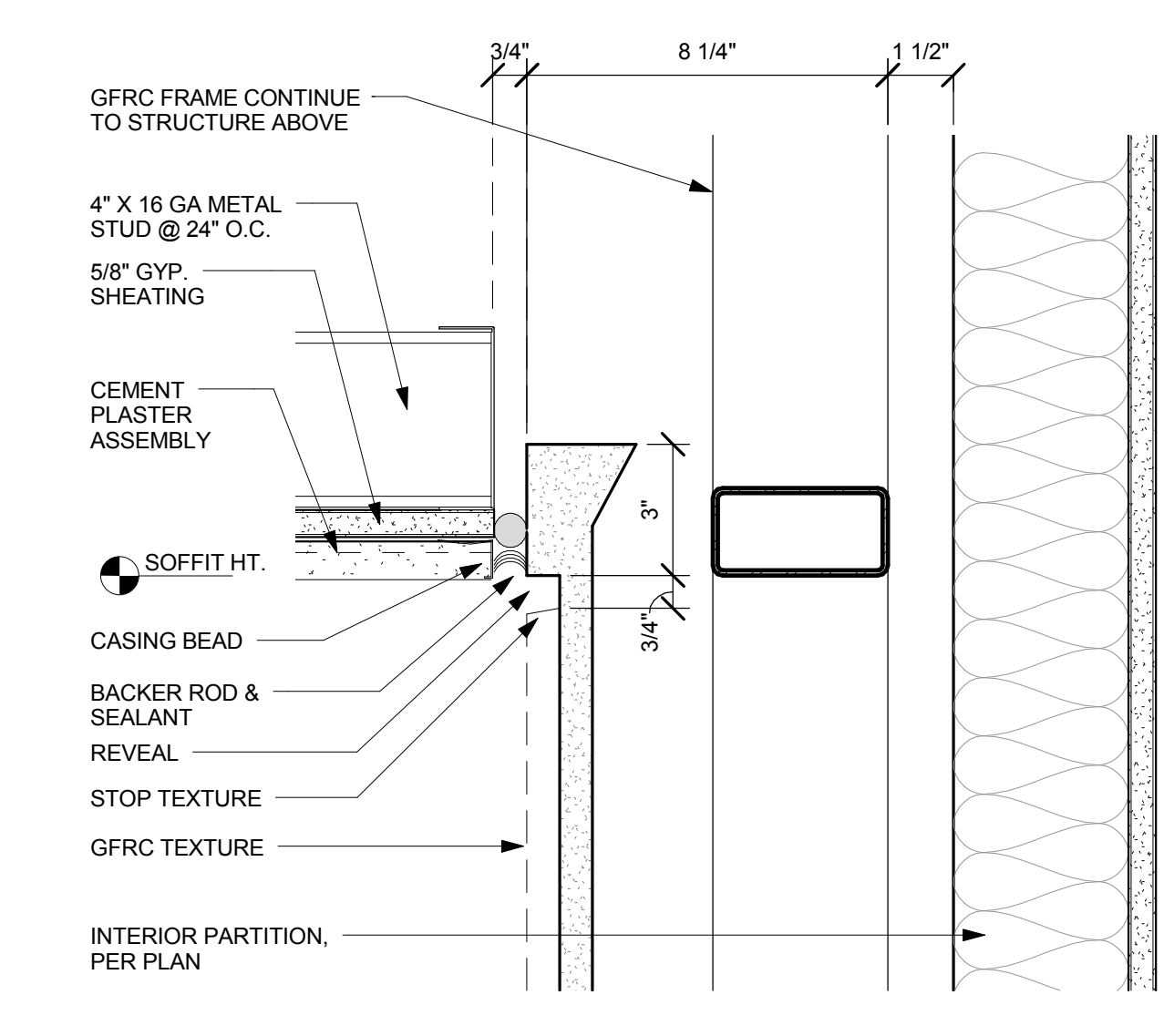
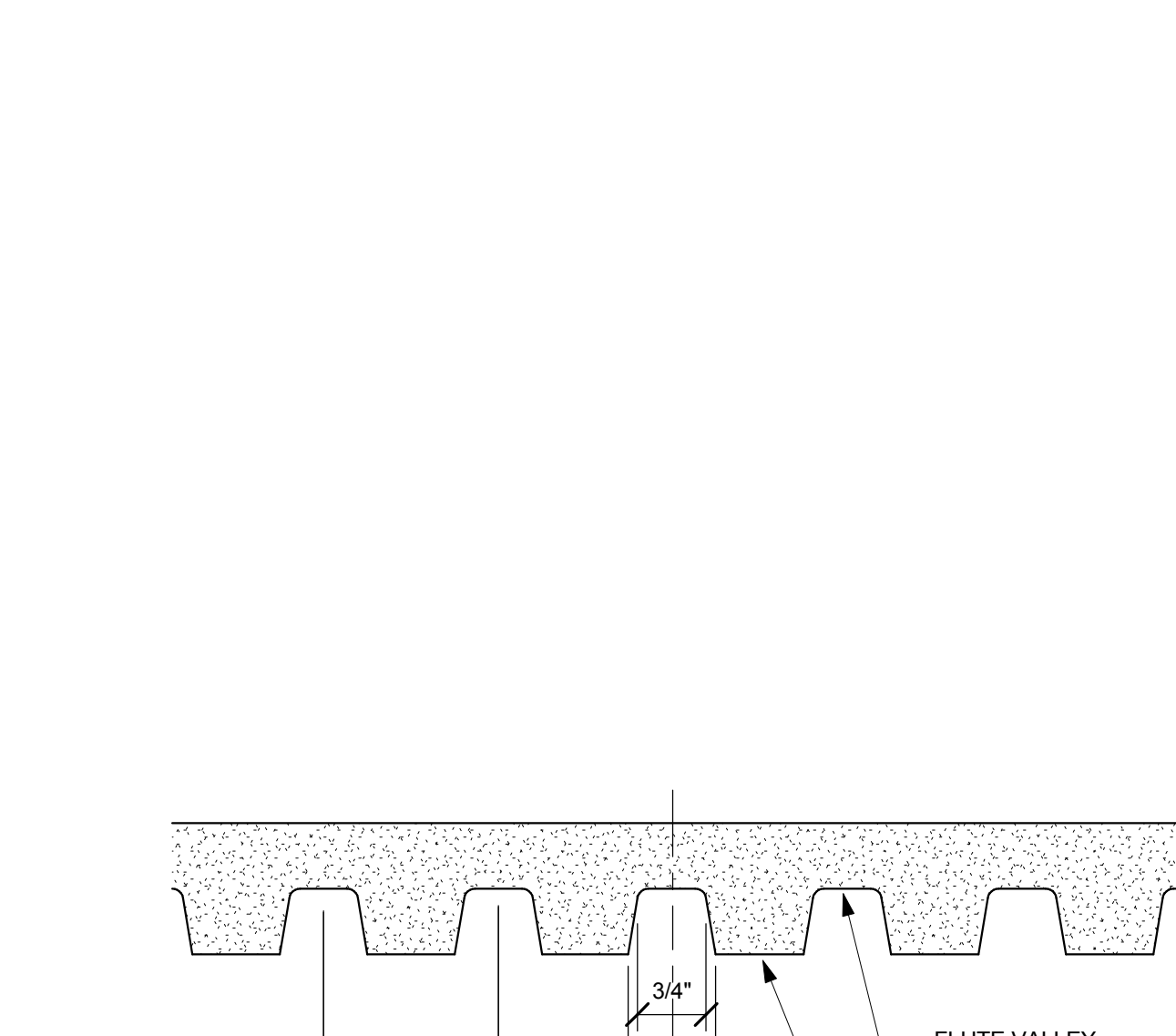


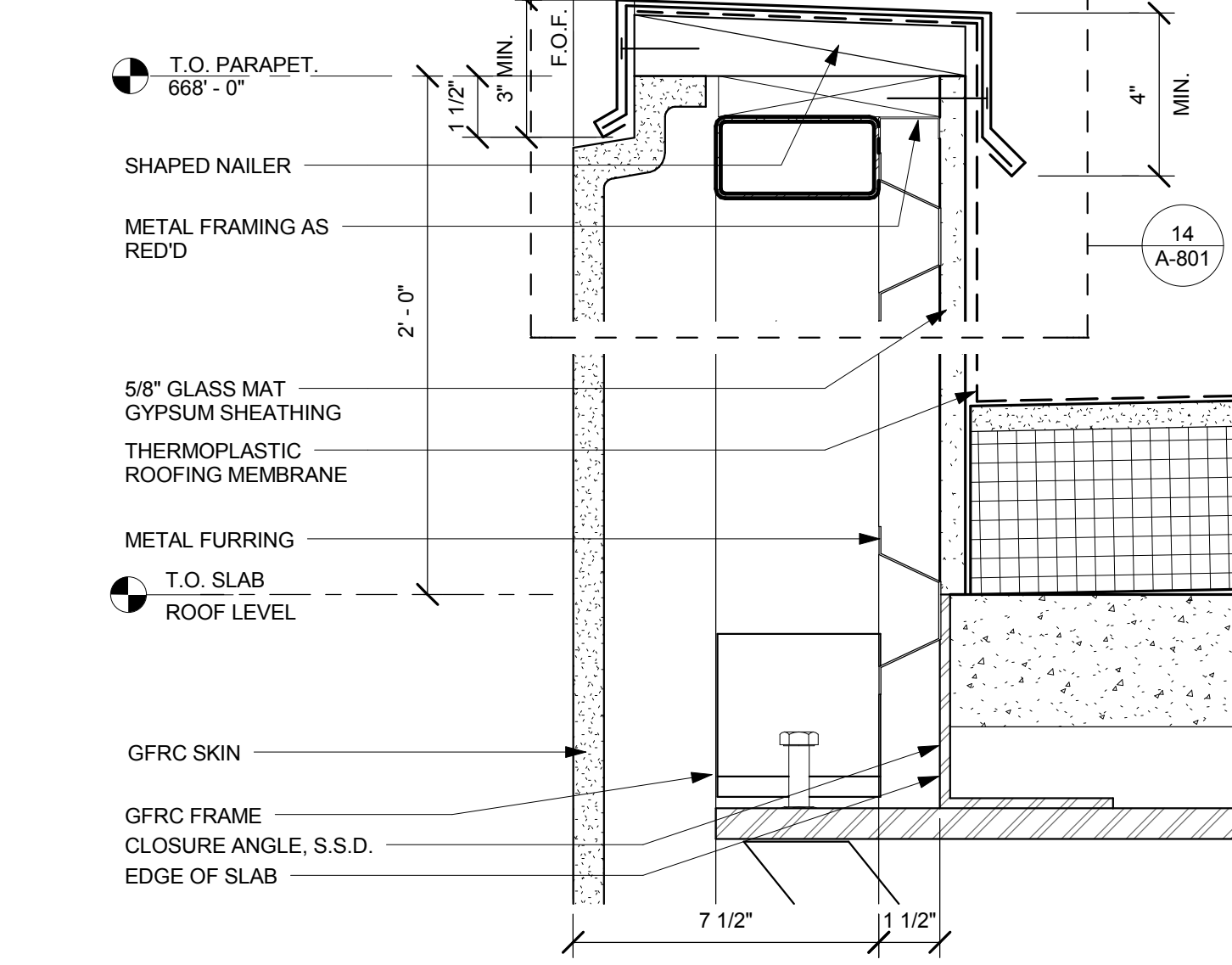
16 GFRP PARAPET - AT CORNER 4/C.8
3" = 1'-0"



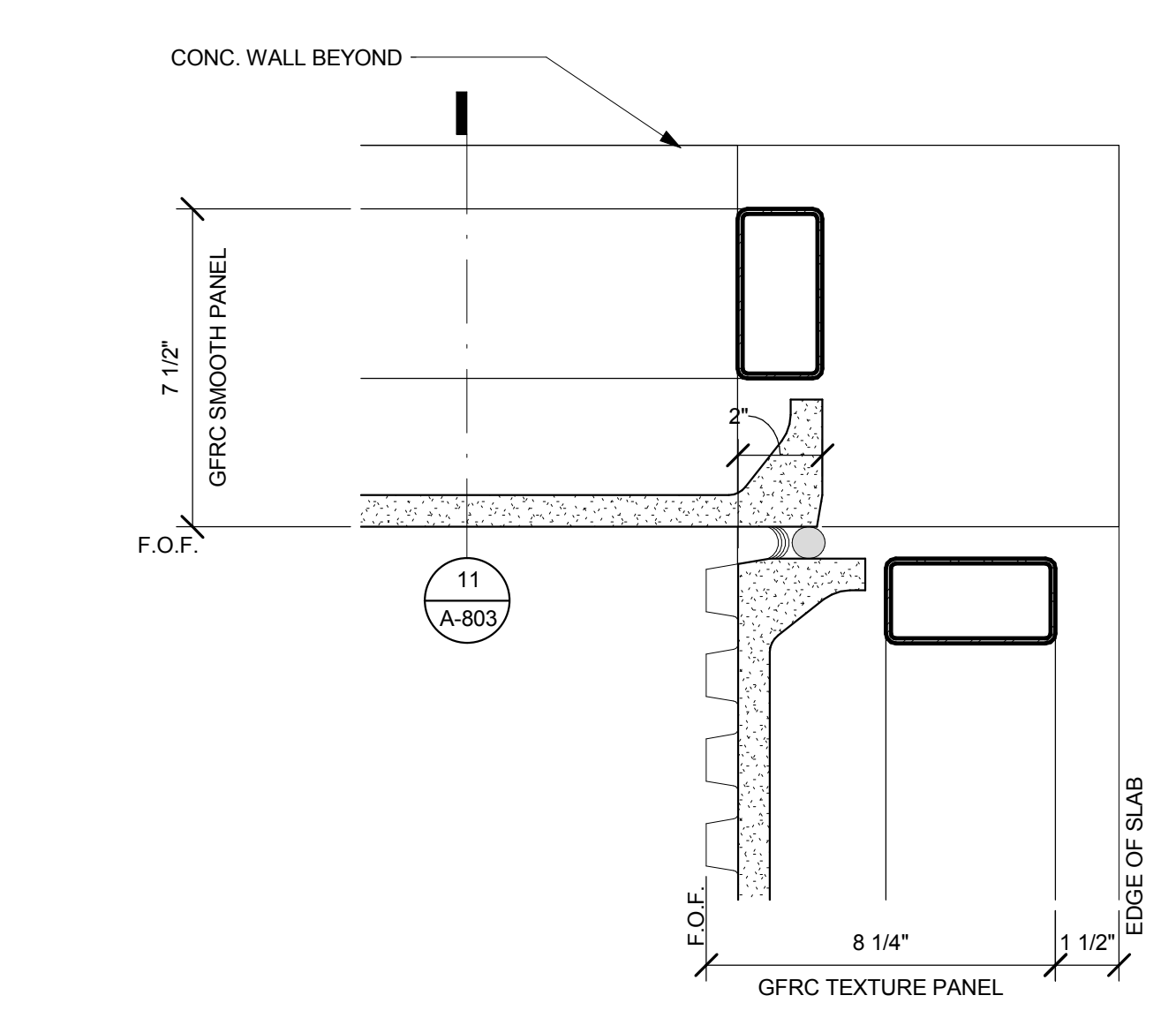
12 GFRP PANEL TOP AT CLG SOFFIT
3" = 1'-0"



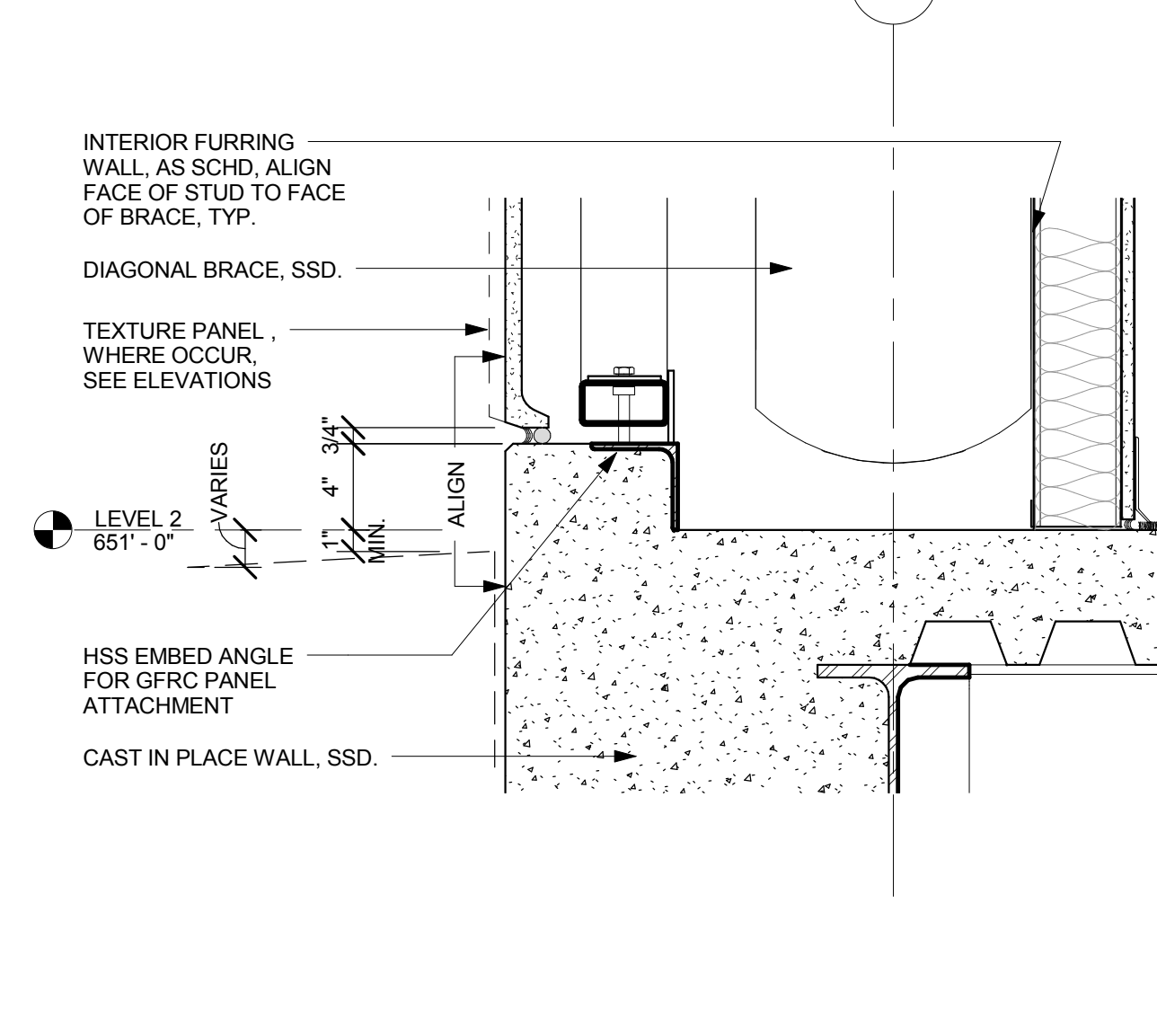
C. PANEL TEXTURE



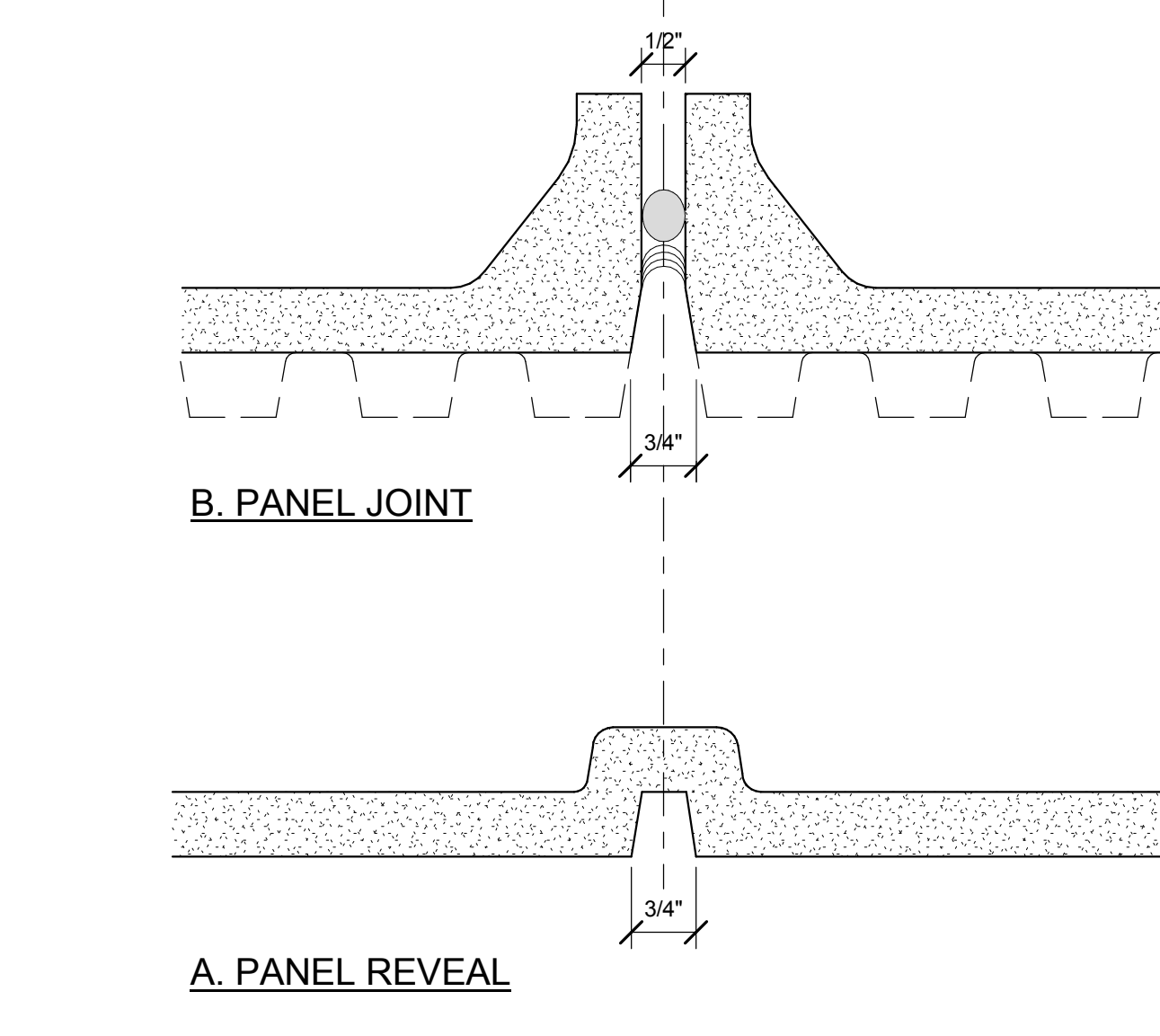
4 GFRP AT ROOF PARAPET
3" = 1'-0"



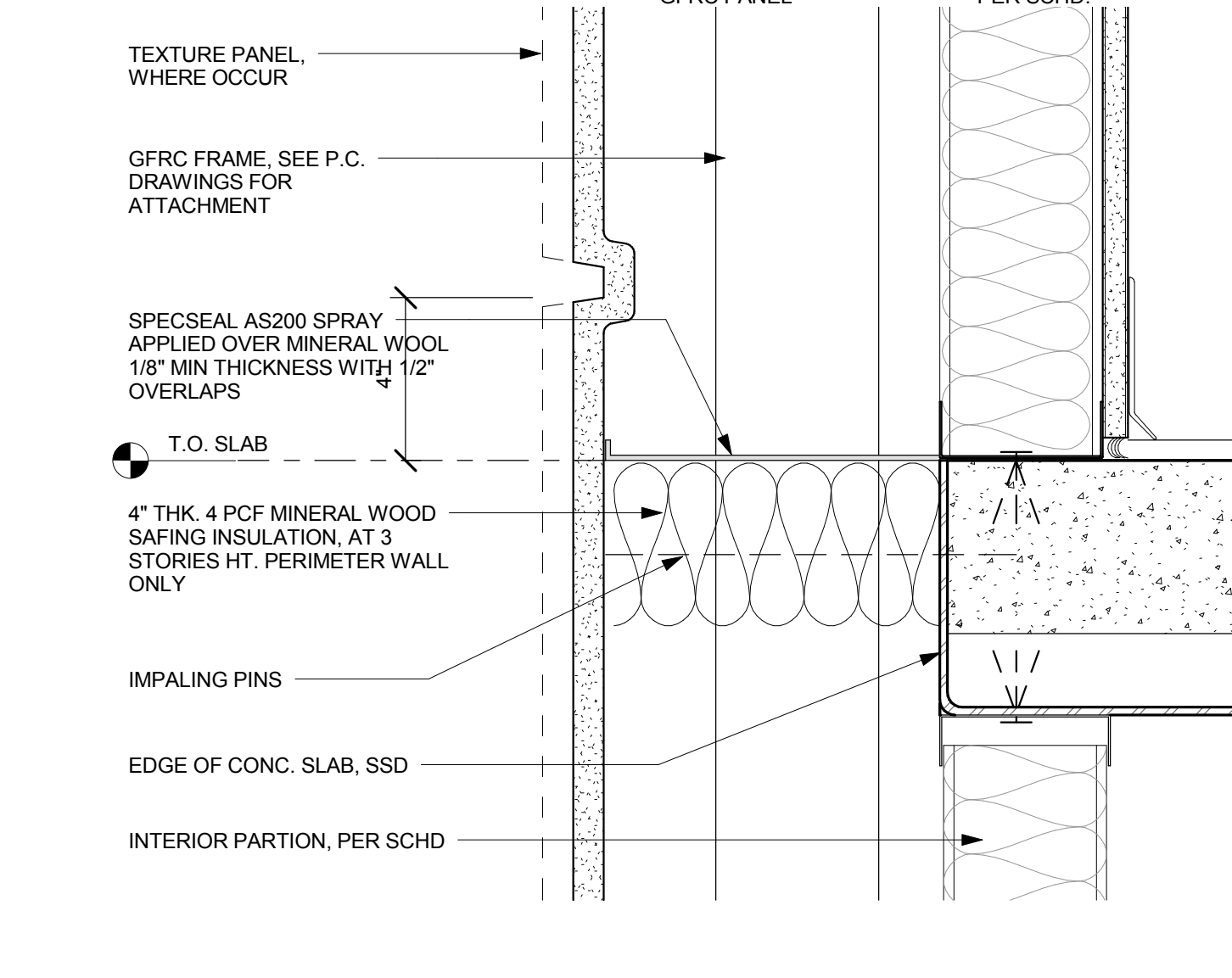
15 GFRP INSIDE CORNER
3" = 1'-0"



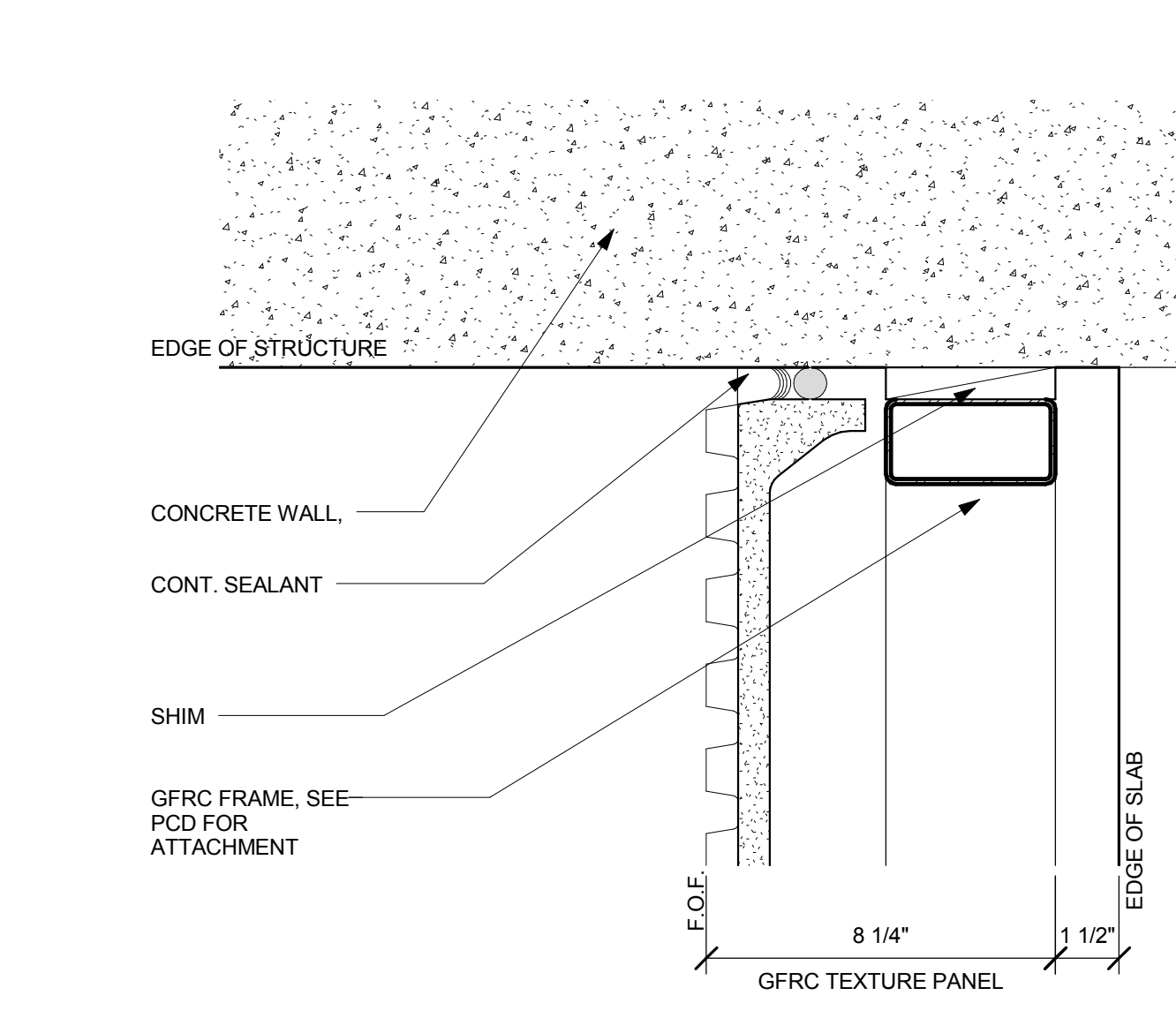
G GFRP PANEL AT WALL
1 1/2" = 1'-0"



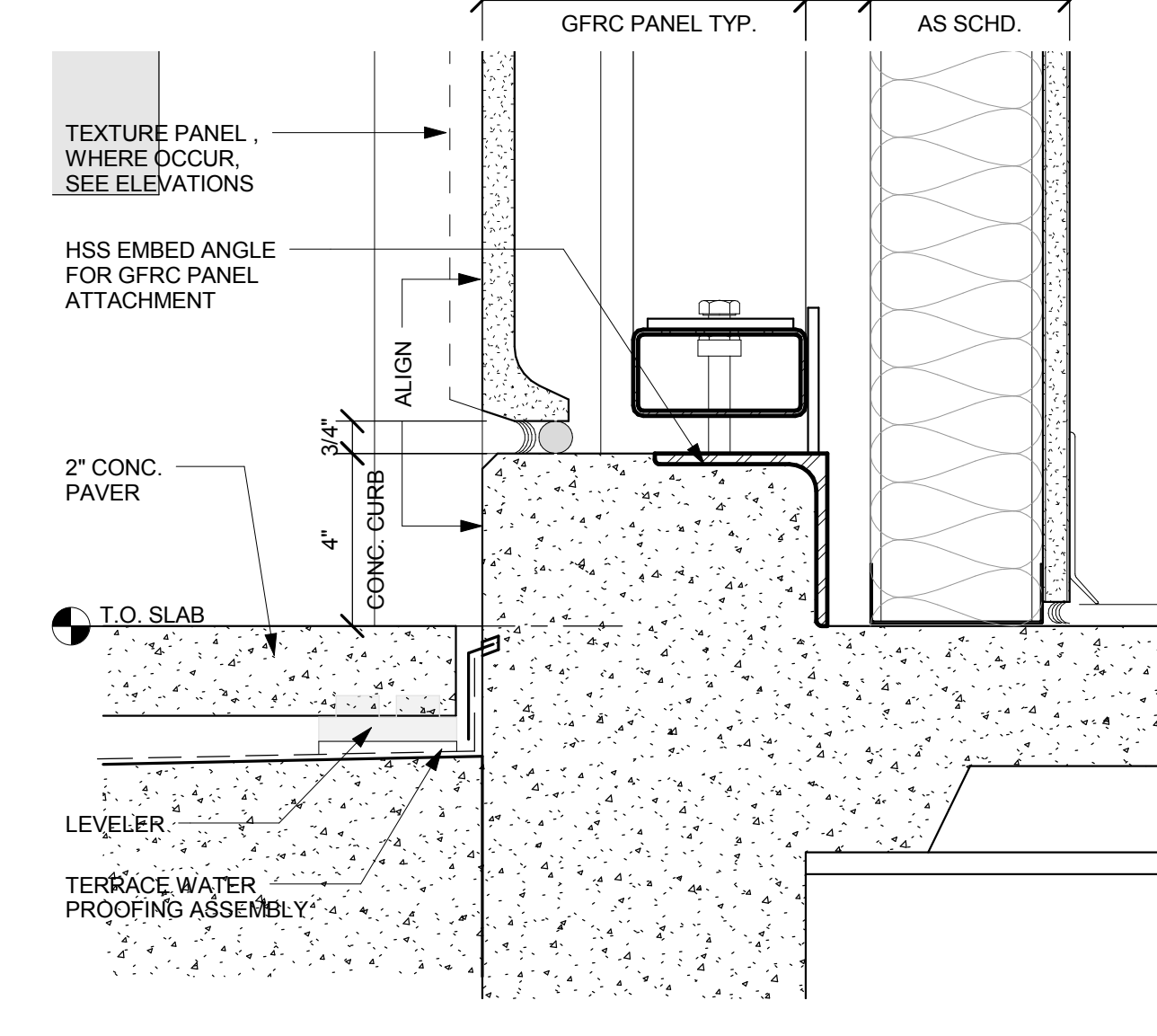
B. PANEL JOINT



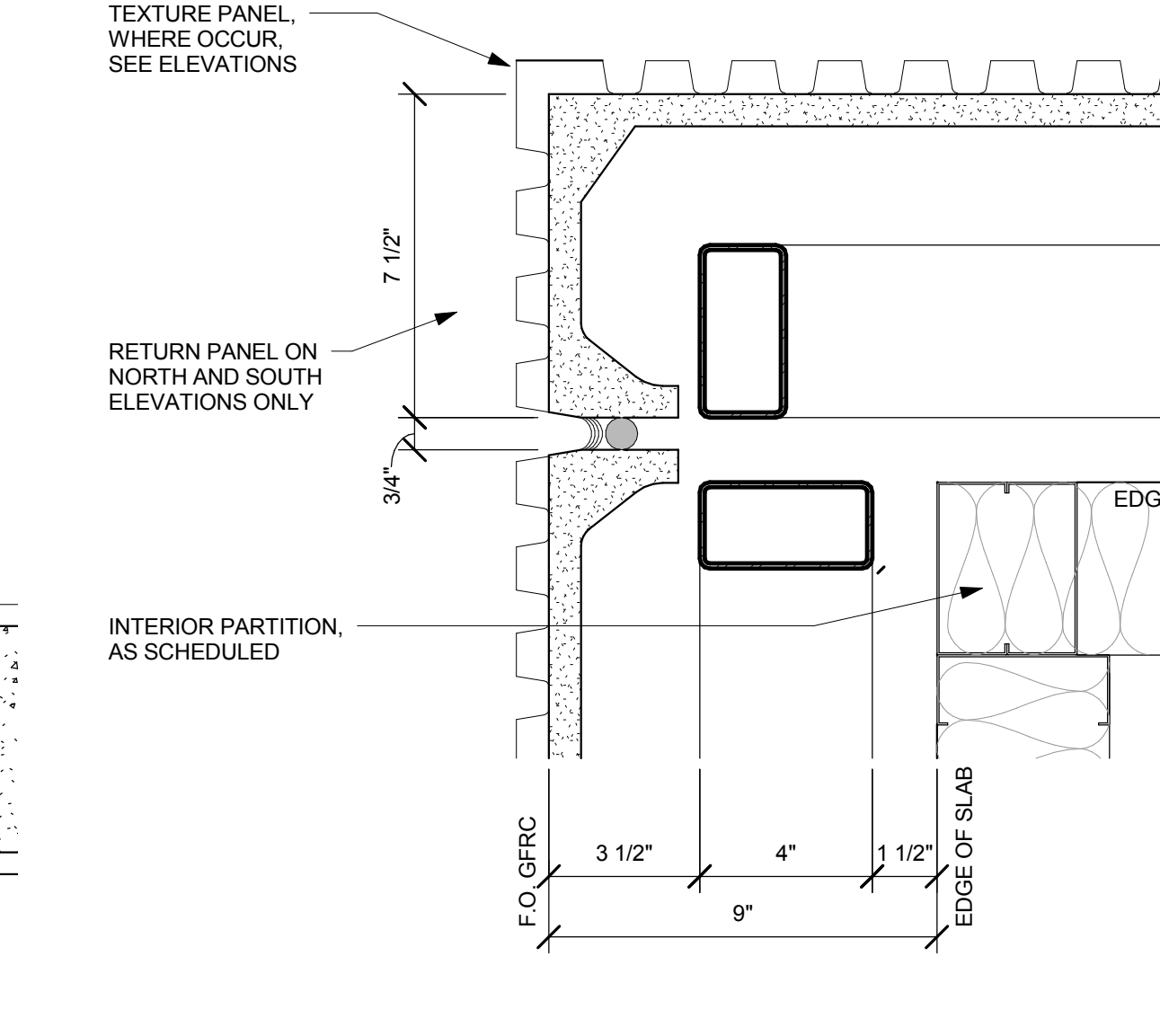
3 GFRP HORIZONTAL REVEAL
3" = 1'-0"



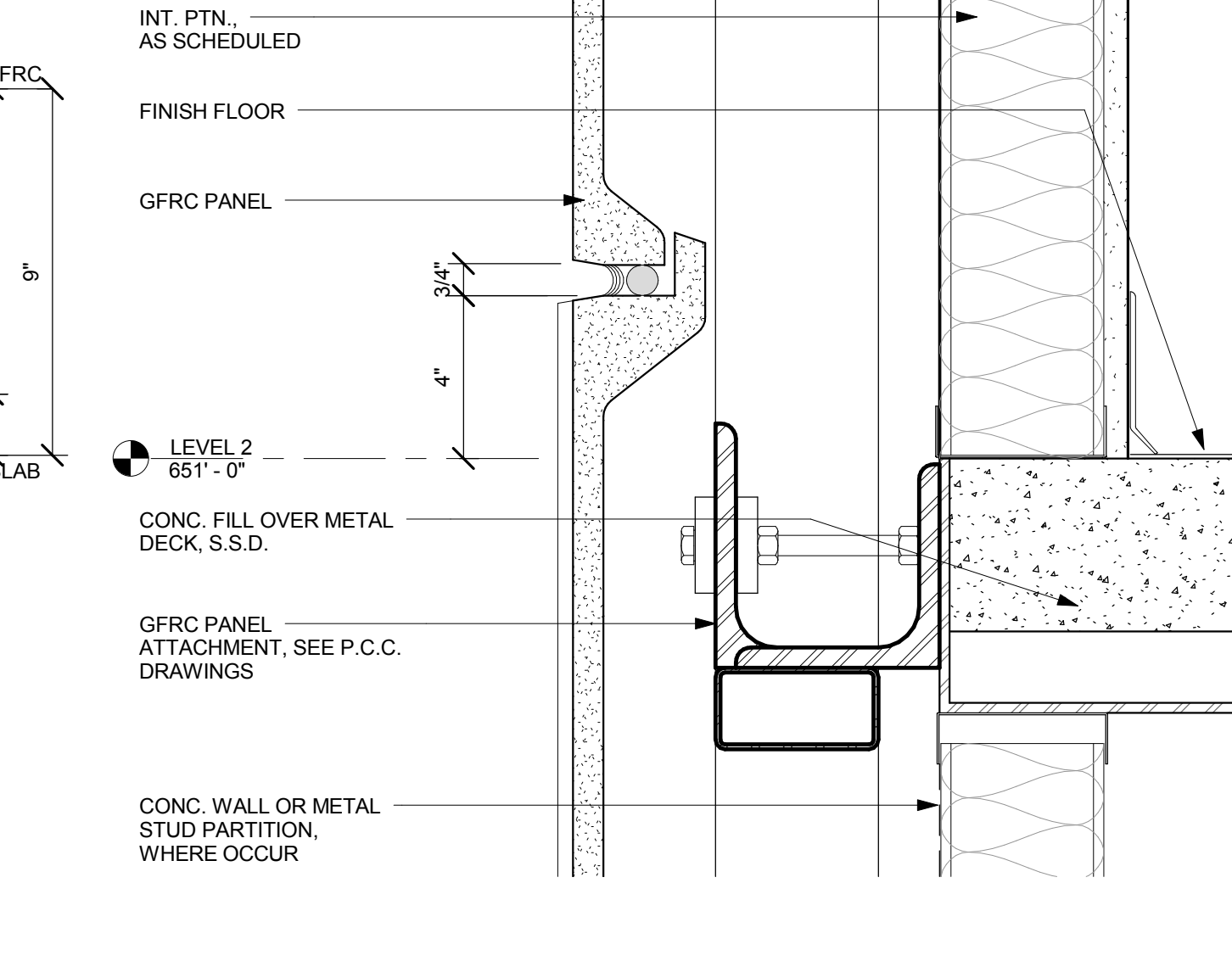
14 GFRP CORNER AT CONCRETE WALL
3" = 1'-0"



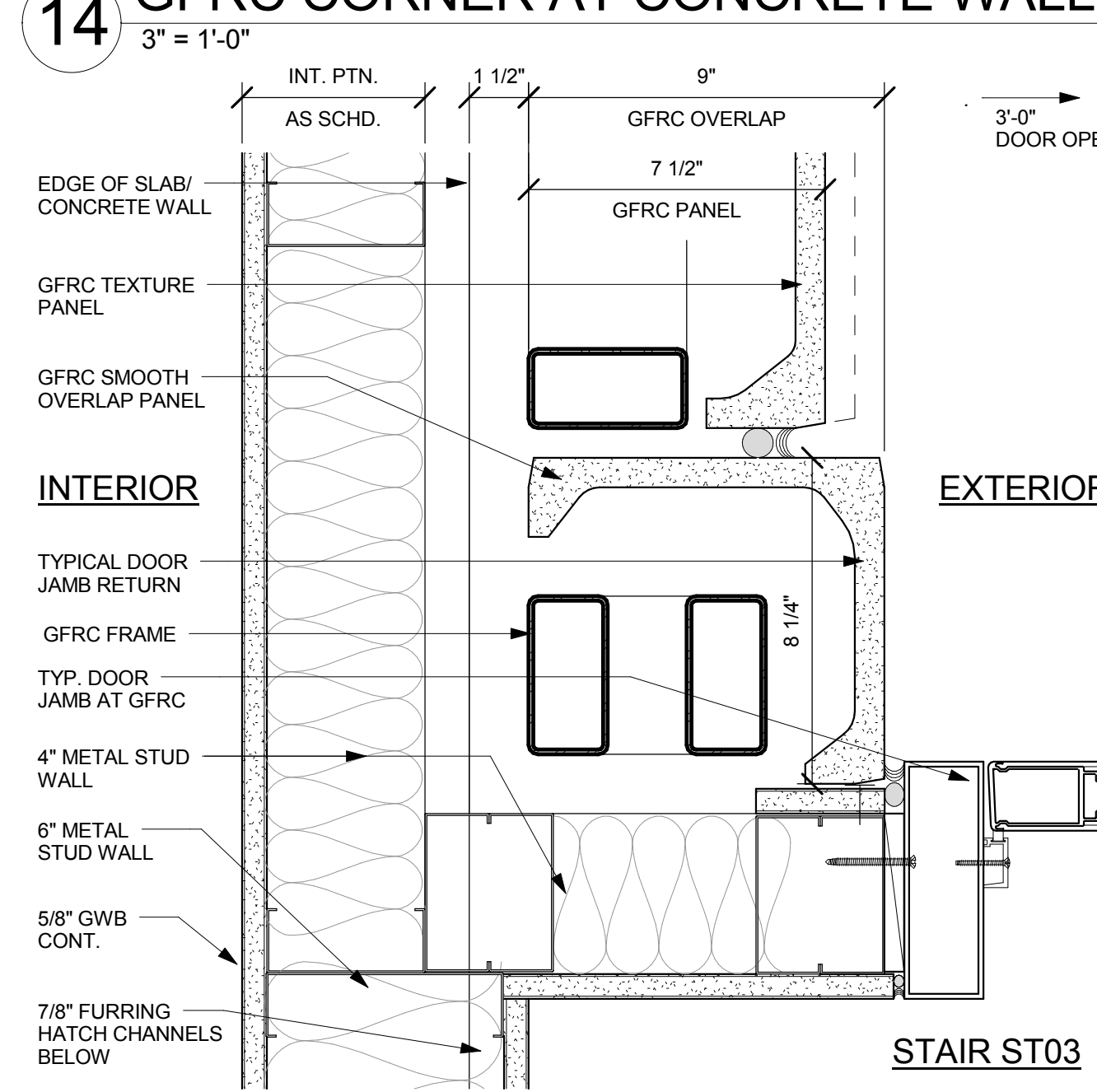
10 GFRP PANEL AT CURB - LEVEL 3
3" = 1'-0"



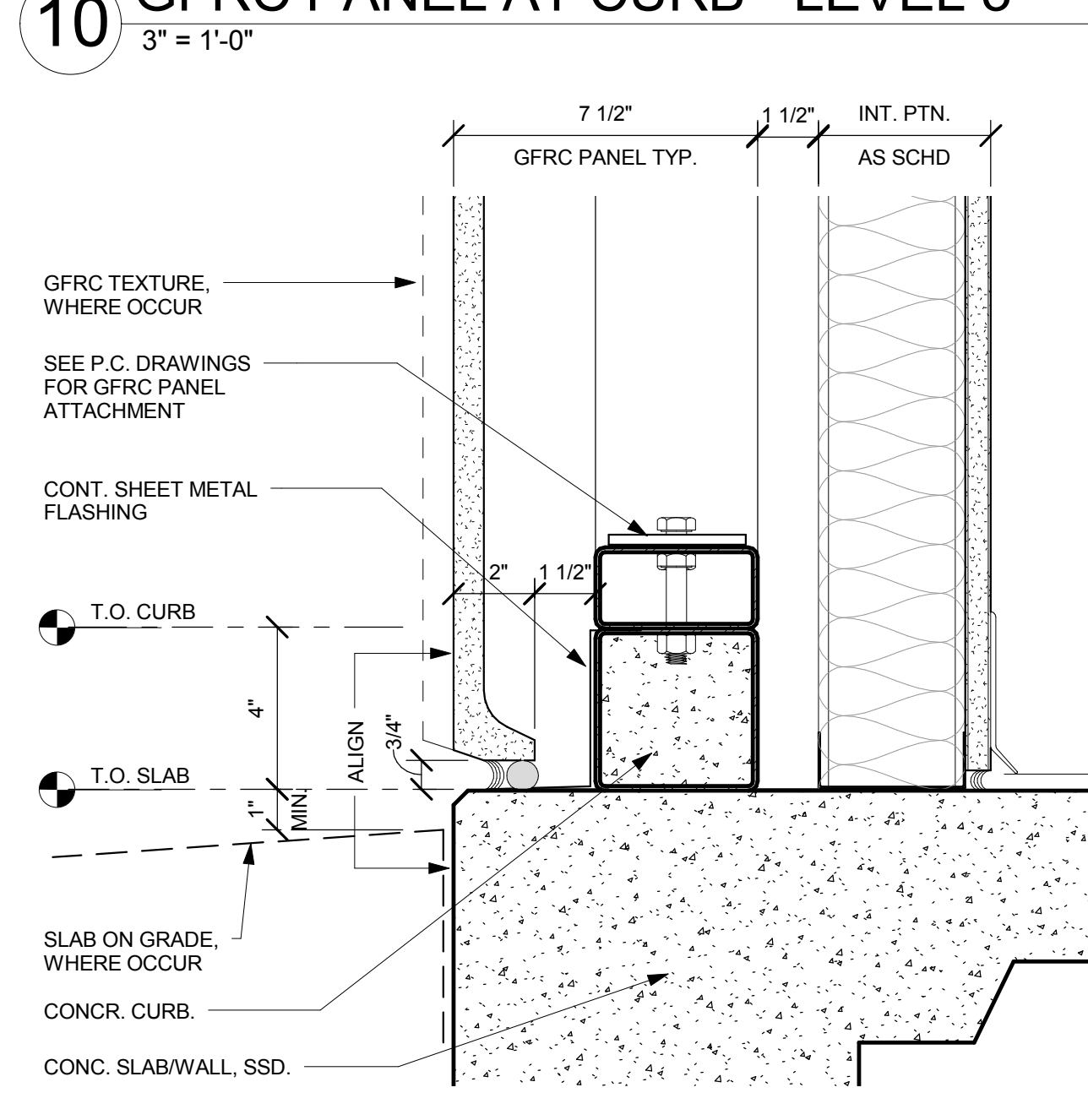
7 GFRP JOINT & REVEAL DETAIL
6" = 1'-0"



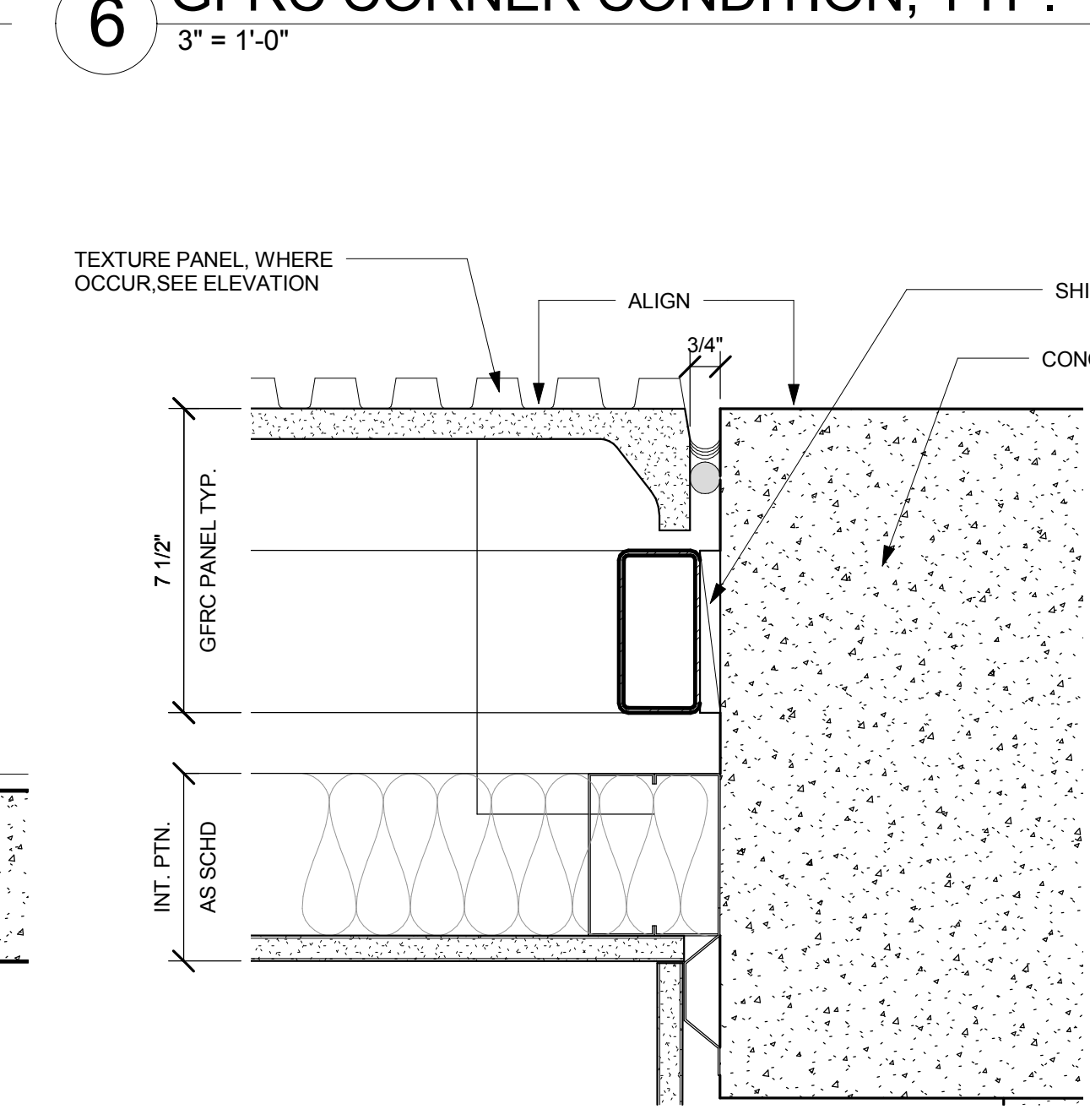
3 GFRP HORIZONTAL REVEAL
3" = 1'-0"



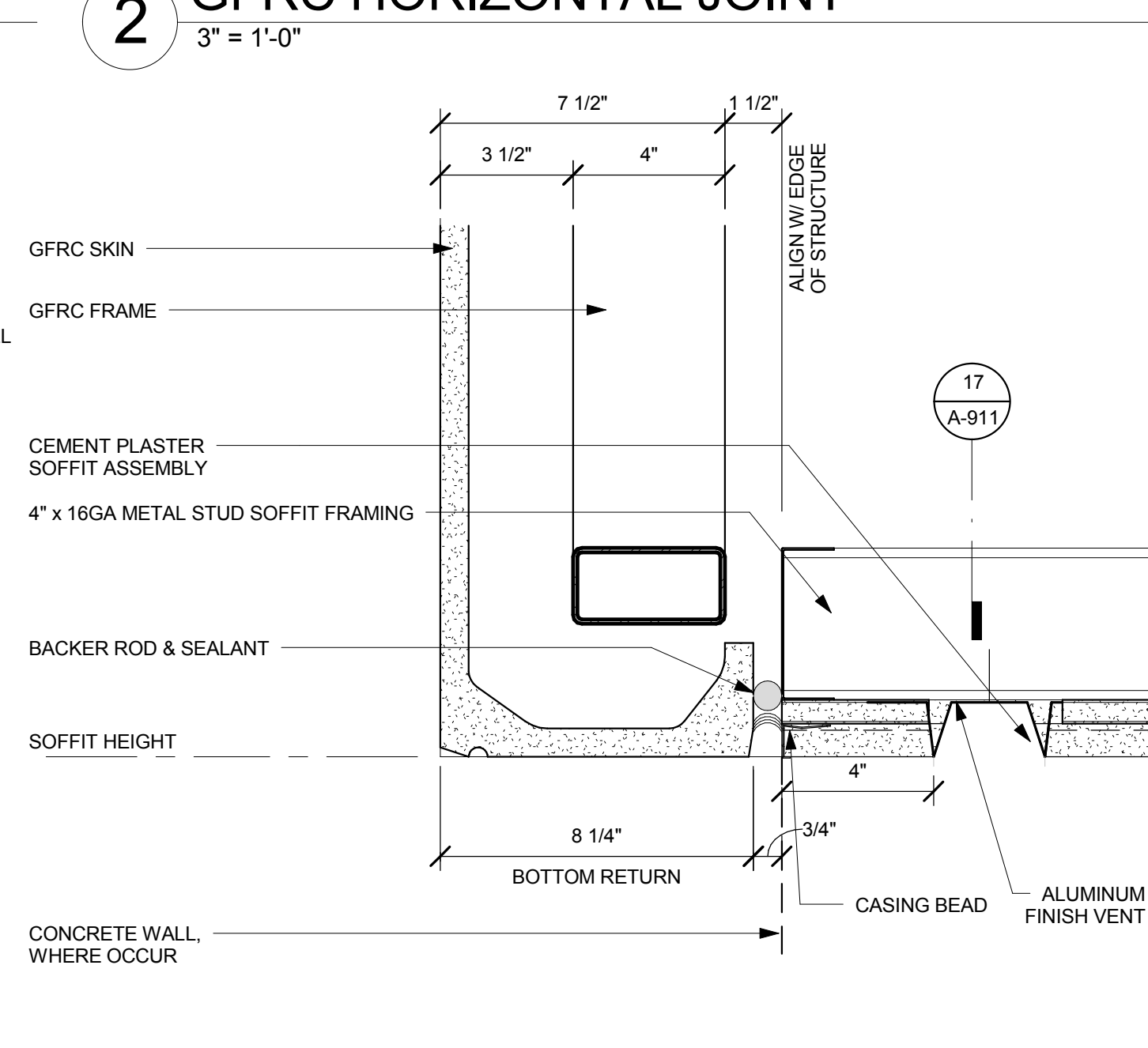
13 GFRP CORNER AT STAIR - ST03
3" = 1'-0"



9 GFRP PANEL ON SLAB, TYP.
3" = 1'-0"



6 GFRP CORNER CONDITION, TYP.
3" = 1'-0"



2 GFRP HORIZONTAL JOINT
3" = 1'-0"

13 GFRP CORNER AT STAIR - ST03
3" = 1'-0"

9 GFRP PANEL ON SLAB, TYP.
3" = 1'-0"

6 GFRP CORNER CONDITION, TYP.
3" = 1'-0"

2 GFRP HORIZONTAL JOINT
3" = 1'-0"

NO. ISSUES/REVISIONS DATE

PROJECT
RECORD SET

BUILDING 4
SKYLINE COLLEGE
SAN MATEO COUNTY
COMMUNITY COLLEGE
DISTRICT

CIP2 DESIGN-BUILD
PROJECT
BUILDING 4

PROJECT NO.: 07012.00 DRAWN BY: Author
DATE: 07/15/08 CHECKED BY: Checker
SCALE: As indicated

SHEET TITLE:
EXTERIOR GFRP
PANEL DETAILS

SHEET NO. A-803

All drawings and written material appearing herein constitute original and unpublished work of the Architect/Engineer and may not be duplicated, used or disclosed without consent of Architect/Engineer.

If this drawing is not 30"x42", then the drawing has been revised from its original size. Note: scales must be adjusted. This line should be equal to one inch.