

FACILITIES PLANNING, MAINTENANCE & OPERATIONS

# Facilities Excellence Quarterly

## Cañada College Electrical Power Shut Down

John Plane Construction and electrical subcontractor Rosendin Electric started the Cañada College 12KV Electrical Project in July 2011 replacing the college's 40 year old, 12 thousand voltage electrical system. This project required the construction of a new Building 30 to house the main 12KV switches plus four new sub switches for the two new load centers. Rosendin Electric pulled all new 12KV cables feeding from PG&E point of connection at Farm Hill Boulevard to new switches locations.

On December 18th & 19th, Cañada engineering staff brought the college's electrical system down. Rosendin Electric then removed all old 12KV feeder lines and installed the new load centers in Building 3 and Building 16. Rosendin also pulled and tested all new feeder cables. On December 30th, Cañada engineers Jozsef Veres, Frank Allegret and Daniel Salgado restored electrical power to the college.



This project was a success and went as scheduled due to the very good team work of the following people: Linda Rizzoli, Swinerton Management & Consulting; Steve Germano, John Plane Construction; Mark Murphy, Rosendin Electric; and Jozsef Veres, Frank Allegret and Daniel Salgado, Cañada Facilities engineering staff. Cañada College was ready for normal operation again on January 3, 2012.

Written by Danny Glass

## Skyline College Electrical Power Shut Down

At Skyline, construction of a new above-ground Load Center was recently completed. Load Center 2 used to be below ground in a vault between Building 1 and 8. The old Load Center 2 was original campus construction, over 40 years old, with old switch gear and other outdated electrical equipment. For years, Skyline has had to monitor water intrusion into the under-ground vault and sump pumps had to be monitored to make sure water was not making its way to the electrical gear. BMS alarms were frequent during the rainy winter season. Making matters worse, known under-ground streams ran through the area that kept the water table high in the vicinity of the vault. The project took over nine months to complete because Skyline wanted to minimize construction activity and its impacts to the campus. The new Load Center 2 now sits above-ground in the area of the Automotive Department buildings. In order to finish up with electrical upgrades and connections to the buildings serviced by Load Center 2, and bring the load center on line, a temporary power shutdown was necessary. Swinerton and BNB Construction scheduled the power shutdown during a period that would minimize any impacts to the campus . . . the week when the campus is closed between Christmas Day and New Year's Day. This meant



Buildings 7, 8, 9, 10 and 11 were without power the week between Christmas and New Year's Eve, for a total of 5 days. Buildings 7, 8, 9, 10 and 11 had no lights, no heat, no air circulation, no computers, no phones, and no power at electrical outlets during the period of power outage. Skyline Engineers supported and worked during this power shut down to sequentially shut-off and turn-on electrical panels serving the affected buildings and monitor the electrical impacts to those buildings. The power shut-down and project was a successful one. Nice work Skyline Engineers!

Written by Richard Inokuchi

## BIRTHDAYS

August		September		October		November		December	
2	Huong Nguyen	13	Ludmila Prisecar	3	Robert Spacher	14	Sheikh Hussain	2	Daniel Gil Salgado
13	Ricardo Moody	19	Jimmy Louie	4	Hugh Wong	14	Karen Powell	3	Jonathan Fuentes
16	Daniel Hernandez	22	Lani Sevilla	4	Qing Liu	14	Amy Cobos	4	Joe Rodrigues
22	Juan Lopez	23	Carol Reed	7	Harold Turner	16	Kanjana Srisupat- pongsa	5	Matthew Chavarria
22	Rosendo Zamora	25	Francisco Carlos	7	Diego Zarco	21	Phil Fong	8	Joe Puckett
22	Giao Van Bui	26	Richard Inokuchi	9	Karen Lam	23	Jozsef Veres	13	Jose Ibarra
29	Frank Allegret	30	Danny Glass	15	Jimmy Chan			13	Bryant Evans
				19	Helen Wong			18	Nicolas Chavez
				24	King Lau			18	Adrian Otis
				28	Carina Warne			29	Dave McCargar
				31	Eduardo Gonzalez				



## District Office Tree Splits in Half

On September 30, 2011, the large pine tree at the South West corner of the District Office building split in half during the night. The break occurred due to age and decay that affected the structural integrity of the tree. Unfortunately, due to the extent of the break, the tree could not be safely salvaged or preserved. Thankfully no one was injured and no property damage occurred. The CSM Facilities Groundskeepers were able to get a crew out very quickly on the following Saturday to address the safety hazards and obstructions associated with the break. Kudos to the CSM Groundskeepers for their quick response time and work in cleaning up the mess.

Written by Karen Powell



# Welcome New Employees!



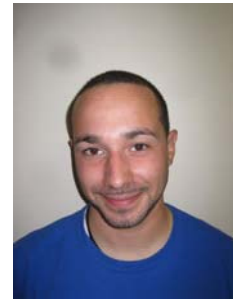
Ricardo Moody  
Skyline College  
Swing Custodian



Justin Eichner  
College of San Mateo  
Groundskeeper



Tibor Andrejka  
College of San Mateo  
Groundskeeper



Jonathan Fuentes  
College of San Mateo  
Groundskeeper



Amy Cobos  
Cañada College  
Swing Custodian



Rafael Mendez  
College of San Mateo  
Swing Custodian



Matthew Chavarria  
College of San Mateo  
Day Custodian



Michele Rudovsky  
College of San Mateo  
Maintenance Engineer



Randy Burris  
Skyline College  
Groundskeeper

Armando Gonzalez  
Skyline College  
Groundskeeper



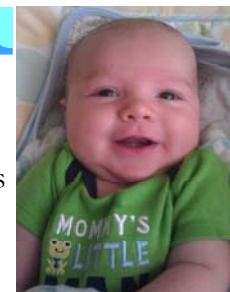
John Cuevas  
Cañada College  
Groundskeeper



## Congratulations Carina Warne—new Baby Boy!



Carina and husband Willie welcomed Isaac Thomas Warne on October 25, 2011 at 8:17am. Isaac weighed 9 lbs. 4 oz. and was 22 inches long. Carina and Willie are very proud parents! Congratulations to the entire Warne Family!



**Facilities Planning,  
Maintenance & Operations**

3401 CSM Drive  
San Mateo, CA 94402  
Phone: 650-574-6512  
Fax: 650-574-6574  
E-mail: warnec@smccd.edu



*"Facilities Excellence"*



**Spotlight on...Amy Cobos!**

**1. How long have you worked at Cañada Facilities?**

6 months

**2. What do you enjoy most about your job?**

Meeting the staff and getting to know new people.

**3. What are your hobbies outside of work?**

I play softball on a recreation team in SF.

**4. If you had a lot of money, where would you go on vacation?**

Probably Australia. I had an opportunity to go in the past and missed it. I've always thought about that.

**5. Do you have any pets?**

Two small dogs. One is a mix of mini pinscher and terrier and the other is a mini dachshund.



**6. If you knew your next meal would be your last, what would it be?**

Homemade tamales and watermelon ice cream. I love anything watermelon.

**7. What is your favorite season or time of year?**

Winter because I love the snow and going up to Tahoe every year.

**8. What is your favorite holiday?**

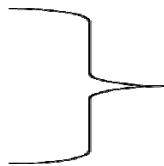
Thanksgiving - food and family.

**9. Can you tell us about your family?**

I have a very close family. We do everything together. I have 1 older sister and 1 older brother. We are very strong in our Native American beliefs. I am half Apache and half Navajo.

Interviewed by Carina Warne

Customer Service  
Professionalism  
Team Work  
Communication



**"Facilities Excellence"**



**WE WANT TO HEAR FROM YOU!** Do you have a story of interest that you would like to share? Do you have a recommendation for an article? Is there something interesting or exciting happening at your campus? Please share your ideas with Carina by emailing them to warnec@smccd.edu.