

MATCHLINE (SEE E2.12)

MATCHLINE (SEE E2.08)

MATCHLINE (SEE E2.10)

SHEET NOTES

- ◆ POLE LIGHTS ON A RAISED POLE BASE IN PARKING AREAS, SEE DETAIL-3 ON SHEET NO. E0.04.
- ◆ POLE LIGHTS ON A FLUSH POLE BASE IN PLANTERS ON GROUND, SEE DETAIL-2 ON SHEET NO. E0.04.
- ◆ MAXIMUM HEIGHT OF POLE IS AT 15'-0", WITH BOTTOM OF FIXTURE HEAD AT 13'-0" A.F.G.

(1) - 1 1/4"-(3) #6 AWG THIN
 (1) - 1 1/4"-(3) #6 AWG THIN
 277V, 20A CIRCUIT #8
 TO LOAD CENTER 2

1 PARTIAL ELECTRICAL PLAN
 E2.08 SCALE: 1" = 20'-0"

DRAWING OF RECORD
 ROSENDIN ELECTRIC, INC.
 DATE: 11/04/11



McCarthy Building Companies, Inc.
 343 Sansome Street, 14th Floor
 San Francisco, California 94104
 P 415 364-1339
 F 415 1397-5999

ROSENDIN ELECTRIC
 270 CHERRY STREET
 SAN ANTONIO, TEXAS 78205
 (512) 343-1111



IDENTIFICATION STAMP
 OF THE STATE ARCHITECT
 OFFICE OF REGULATION SERVICE
 APPL. # 01-110097
 AC: FLS SS
 DATE: _____
 FILE NUMBER: _____

The use of all other project documents and of ideas, methods, and designs incorporated herein are acknowledgments of services. All project documents are the registered property of LPA, Inc. (LPA) and cannot be copied, used, or altered in any way without the written consent of LPA. LPA hereby grants permission to the recipient to use the information contained herein for the project only. LPA hereby disclaims any liability for any errors or omissions in this drawing. LPA and its consultants make no representation concerning the accuracy of documents not shown or not responsible for any discrepancies between project documents and the existing conditions.
 © Copyright 2008

College of San Mateo
 Site Package
 San Mateo, CA
 Developed for
 San Mateo County Community College District

Revision	Description	Date
1	ISSUE FOR PERMIT	09 APRIL 2009
2	FOR RECORD	19 OCT 2009
3	FOR RECORD	19 OCT 2009
4	FOR RECORD	19 OCT 2009
5	FOR RECORD	19 OCT 2009
6	FOR RECORD	19 OCT 2009
7	FOR RECORD	19 OCT 2009
8	FOR RECORD	19 OCT 2009
9	FOR RECORD	19 OCT 2009
10	FOR RECORD	19 OCT 2009
11	FOR RECORD	19 OCT 2009
12	FOR RECORD	19 OCT 2009
13	FOR RECORD	19 OCT 2009
14	FOR RECORD	19 OCT 2009
15	FOR RECORD	19 OCT 2009
16	FOR RECORD	19 OCT 2009
17	FOR RECORD	19 OCT 2009
18	FOR RECORD	19 OCT 2009
19	FOR RECORD	19 OCT 2009
20	FOR RECORD	19 OCT 2009
21	FOR RECORD	19 OCT 2009
22	FOR RECORD	19 OCT 2009
23	FOR RECORD	19 OCT 2009
24	FOR RECORD	19 OCT 2009
25	FOR RECORD	19 OCT 2009
26	FOR RECORD	19 OCT 2009
27	FOR RECORD	19 OCT 2009
28	FOR RECORD	19 OCT 2009
29	FOR RECORD	19 OCT 2009
30	FOR RECORD	19 OCT 2009
31	FOR RECORD	19 OCT 2009
32	FOR RECORD	19 OCT 2009
33	FOR RECORD	19 OCT 2009
34	FOR RECORD	19 OCT 2009
35	FOR RECORD	19 OCT 2009
36	FOR RECORD	19 OCT 2009
37	FOR RECORD	19 OCT 2009
38	FOR RECORD	19 OCT 2009
39	FOR RECORD	19 OCT 2009
40	FOR RECORD	19 OCT 2009
41	FOR RECORD	19 OCT 2009
42	FOR RECORD	19 OCT 2009
43	FOR RECORD	19 OCT 2009
44	FOR RECORD	19 OCT 2009
45	FOR RECORD	19 OCT 2009
46	FOR RECORD	19 OCT 2009
47	FOR RECORD	19 OCT 2009
48	FOR RECORD	19 OCT 2009
49	FOR RECORD	19 OCT 2009
50	FOR RECORD	19 OCT 2009
51	FOR RECORD	19 OCT 2009
52	FOR RECORD	19 OCT 2009
53	FOR RECORD	19 OCT 2009
54	FOR RECORD	19 OCT 2009
55	FOR RECORD	19 OCT 2009
56	FOR RECORD	19 OCT 2009
57	FOR RECORD	19 OCT 2009
58	FOR RECORD	19 OCT 2009
59	FOR RECORD	19 OCT 2009
60	FOR RECORD	19 OCT 2009
61	FOR RECORD	19 OCT 2009
62	FOR RECORD	19 OCT 2009
63	FOR RECORD	19 OCT 2009
64	FOR RECORD	19 OCT 2009
65	FOR RECORD	19 OCT 2009
66	FOR RECORD	19 OCT 2009
67	FOR RECORD	19 OCT 2009
68	FOR RECORD	19 OCT 2009
69	FOR RECORD	19 OCT 2009
70	FOR RECORD	19 OCT 2009
71	FOR RECORD	19 OCT 2009
72	FOR RECORD	19 OCT 2009
73	FOR RECORD	19 OCT 2009
74	FOR RECORD	19 OCT 2009
75	FOR RECORD	19 OCT 2009
76	FOR RECORD	19 OCT 2009
77	FOR RECORD	19 OCT 2009
78	FOR RECORD	19 OCT 2009
79	FOR RECORD	19 OCT 2009
80	FOR RECORD	19 OCT 2009
81	FOR RECORD	19 OCT 2009
82	FOR RECORD	19 OCT 2009
83	FOR RECORD	19 OCT 2009
84	FOR RECORD	19 OCT 2009
85	FOR RECORD	19 OCT 2009
86	FOR RECORD	19 OCT 2009
87	FOR RECORD	19 OCT 2009
88	FOR RECORD	19 OCT 2009
89	FOR RECORD	19 OCT 2009
90	FOR RECORD	19 OCT 2009
91	FOR RECORD	19 OCT 2009
92	FOR RECORD	19 OCT 2009
93	FOR RECORD	19 OCT 2009
94	FOR RECORD	19 OCT 2009
95	FOR RECORD	19 OCT 2009
96	FOR RECORD	19 OCT 2009
97	FOR RECORD	19 OCT 2009
98	FOR RECORD	19 OCT 2009
99	FOR RECORD	19 OCT 2009
100	FOR RECORD	19 OCT 2009

Revision	Description	Date
1	ISSUE FOR PERMIT	09 APRIL 2009
2	FOR RECORD	19 OCT 2009
3	FOR RECORD	19 OCT 2009
4	FOR RECORD	19 OCT 2009
5	FOR RECORD	19 OCT 2009
6	FOR RECORD	19 OCT 2009
7	FOR RECORD	19 OCT 2009
8	FOR RECORD	19 OCT 2009
9	FOR RECORD	19 OCT 2009
10	FOR RECORD	19 OCT 2009
11	FOR RECORD	19 OCT 2009
12	FOR RECORD	19 OCT 2009
13	FOR RECORD	19 OCT 2009
14	FOR RECORD	19 OCT 2009
15	FOR RECORD	19 OCT 2009
16	FOR RECORD	19 OCT 2009
17	FOR RECORD	19 OCT 2009
18	FOR RECORD	19 OCT 2009
19	FOR RECORD	19 OCT 2009
20	FOR RECORD	19 OCT 2009
21	FOR RECORD	19 OCT 2009
22	FOR RECORD	19 OCT 2009
23	FOR RECORD	19 OCT 2009
24	FOR RECORD	19 OCT 2009
25	FOR RECORD	19 OCT 2009
26	FOR RECORD	19 OCT 2009
27	FOR RECORD	19 OCT 2009
28	FOR RECORD	19 OCT 2009
29	FOR RECORD	19 OCT 2009
30	FOR RECORD	19 OCT 2009
31	FOR RECORD	19 OCT 2009
32	FOR RECORD	19 OCT 2009
33	FOR RECORD	19 OCT 2009
34	FOR RECORD	19 OCT 2009
35	FOR RECORD	19 OCT 2009
36	FOR RECORD	19 OCT 2009
37	FOR RECORD	19 OCT 2009
38	FOR RECORD	19 OCT 2009
39	FOR RECORD	19 OCT 2009
40	FOR RECORD	19 OCT 2009
41	FOR RECORD	19 OCT 2009
42	FOR RECORD	19 OCT 2009
43	FOR RECORD	19 OCT 2009
44	FOR RECORD	19 OCT 2009
45	FOR RECORD	19 OCT 2009
46	FOR RECORD	19 OCT 2009
47	FOR RECORD	19 OCT 2009
48	FOR RECORD	19 OCT 2009
49	FOR RECORD	19 OCT 2009
50	FOR RECORD	19 OCT 2009
51	FOR RECORD	19 OCT 2009
52	FOR RECORD	19 OCT 2009
53	FOR RECORD	19 OCT 2009
54	FOR RECORD	19 OCT 2009
55	FOR RECORD	19 OCT 2009
56	FOR RECORD	19 OCT 2009
57	FOR RECORD	19 OCT 2009
58	FOR RECORD	19 OCT 2009
59	FOR RECORD	19 OCT 2009
60	FOR RECORD	19 OCT 2009
61	FOR RECORD	19 OCT 2009
62	FOR RECORD	19 OCT 2009
63	FOR RECORD	19 OCT 2009
64	FOR RECORD	19 OCT 2009
65	FOR RECORD	19 OCT 2009
66	FOR RECORD	19 OCT 2009
67	FOR RECORD	19 OCT 2009
68	FOR RECORD	19 OCT 2009
69	FOR RECORD	19 OCT 2009
70	FOR RECORD	19 OCT 2009
71	FOR RECORD	19 OCT 2009
72	FOR RECORD	19 OCT 2009
73	FOR RECORD	19 OCT 2009
74	FOR RECORD	19 OCT 2009
75	FOR RECORD	19 OCT 2009
76	FOR RECORD	19 OCT 2009
77	FOR RECORD	19 OCT 2009
78	FOR RECORD	19 OCT 2009
79	FOR RECORD	19 OCT 2009
80	FOR RECORD	19 OCT 2009
81	FOR RECORD	19 OCT 2009
82	FOR RECORD	19 OCT 2009
83	FOR RECORD	19 OCT 2009
84	FOR RECORD	19 OCT 2009
85	FOR RECORD	19 OCT 2009
86	FOR RECORD	19 OCT 2009
87	FOR RECORD	19 OCT 2009
88	FOR RECORD	19 OCT 2009
89	FOR RECORD	19 OCT 2009
90	FOR RECORD	19 OCT 2009
91	FOR RECORD	19 OCT 2009
92	FOR RECORD	19 OCT 2009
93	FOR RECORD	19 OCT 2009
94	FOR RECORD	19 OCT 2009
95	FOR RECORD	19 OCT 2009
96	FOR RECORD	19 OCT 2009
97	FOR RECORD	19 OCT 2009
98	FOR RECORD	19 OCT 2009
99	FOR RECORD	19 OCT 2009
100	FOR RECORD	19 OCT 2009

Job No. 300085
 Date 09 APRIL 2009
 Drawn by REI/CAD TEAM
 Checked by THS/RW
 Scale AS SHOWN

ELECTRICAL PLAN SITE
E2.09



IDENTIFICATION STAMP
 DIV. OF THE STATE ARCHITECT
 OFFICE OF REGULATION SERVICE

APPL. # 01-110097

AC: _____ FLS: _____ SS: _____
 DATE: _____

FILE NUMBER: _____

The use of all other project documents and of data, methods, and design incorporated herein are herewith acknowledged. All project documents are the registered property of LPA, Inc. (LPA) and cannot be used or reproduced in any way without the written consent of LPA. LPA hereby grants permission to reproduce this drawing for informational purposes only. Reproduction or modification (rework) is not permitted without the written consent of LPA and LPA's Consultants. In the event of any dispute, the original documents shall prevail. LPA and LPA's Consultants make no representation concerning the accuracy of documents not shown or incorporated by reference. LPA and LPA's Consultants make no representation concerning the accuracy of documents not shown or incorporated by reference.

© Copyright 2008

College of San Mateo
 Site Package
 San Mateo, CA

Developed for
 San Mateo County Community College District

Revision	Description	Date

Revision	Description	Date
19	SEPT 2008	
18	APRIL 2009	
17	APRIL 2009	
16	COMMENTS-REV 18	OCT 2008
15	RECORD	OCT 2008
14	REV 13	OCT 2008
13	REV 12 & TEL/DRAW	REV 13
12	REV 11	OCT 2008
11	REV 10	OCT 2008
10	REV 9	OCT 2008
9	REV 8	OCT 2008
8	REV 7	OCT 2008
7	REV 6	OCT 2008
6	REV 5	OCT 2008
5	REV 4	OCT 2008
4	REV 3	OCT 2008
3	REV 2	OCT 2008
2	REV 1	OCT 2008
1	REV 0	OCT 2008

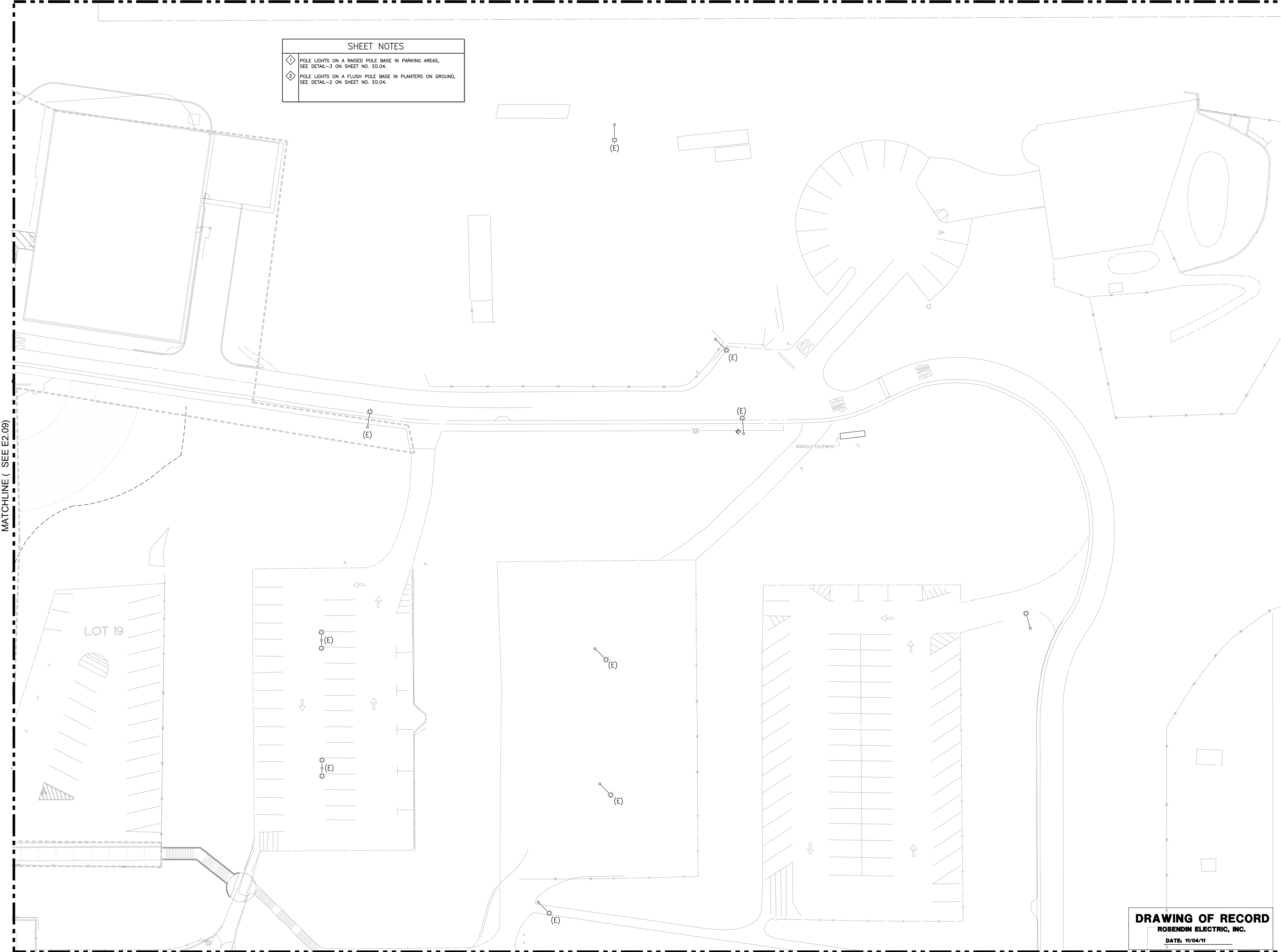
Job No.	300085
Date	09 APRIL 2009
Drawn by	REI/CAD TEAM
Checked by	THS/RW
Scale	AS SHOWN

ELECTRICAL PLAN SITE

E2.10

SHEET NOTES

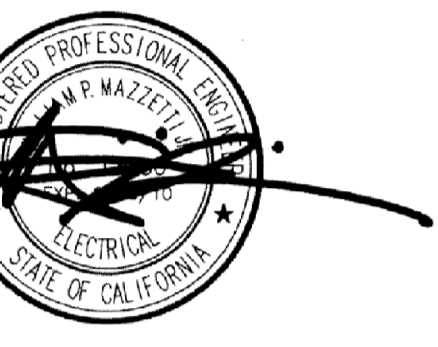
- ◆ POLE LIGHTS ON A RAISED POLE BASE IN PARKING AREAS, SEE DETAIL-3 ON SHEET NO. E2.04.
- ◆ POLE LIGHTS ON A FLUSH POLE BASE IN PLANTERS ON GROUND, SEE DETAIL-2 ON SHEET NO. E2.04.



MATCHLINE (SEE E2.09)

DRAWING OF RECORD
ROSENDIN ELECTRIC, INC.
 DATE: 11/04/11

1 PARTIAL ELECTRICAL PLAN
 E2.10 SCALE: 1" = 20'-0"



IDENTIFICATION STAMP
DIV. OF THE STATE ARCHITECT
OFFICE OF REGULATION SERVICE
APPL. #: 01-110097
AC: _____ FLS: _____ SS: _____
DATE: _____
FILE NUMBER: _____

The use of all other project documents and of data, methods, and designs incorporated herein are statements of service. All project documents are the registered property of LPA, KH, LLP, and cannot be copied, used, or reproduced in any way without the express written consent of LPA, KH, LLP. This warranty is limited to the design and construction of the electrical system as shown on these drawings. It does not extend to any other project documents, reproduction or modification (revised) is not only voided but constitutes a breach of contract. LPA and KH, LLP, shall not be held responsible for any errors or omissions in the drawings, or for any damage or liability arising directly or indirectly from project documents. Rosendin Electric, Inc. is not responsible for any errors or omissions in the drawings, or for any damage or liability arising directly or indirectly from project documents. LPA and KH, LLP, shall not be held responsible for any errors or omissions in the drawings, or for any damage or liability arising directly or indirectly from project documents and the existing conditions.

© Copyright 2008

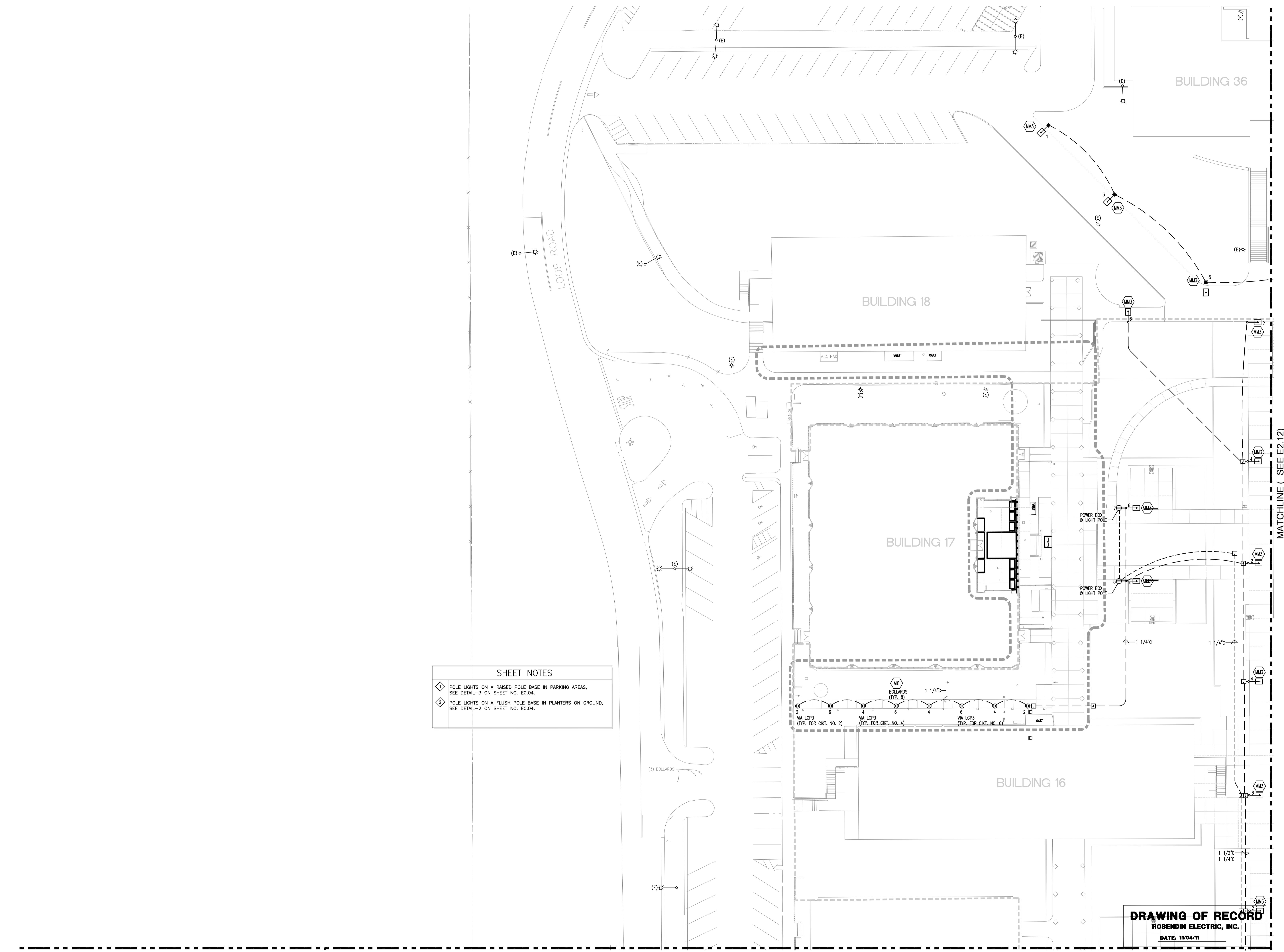
College of San Mateo
Site Package
San Mateo, CA
Developed for
San Mateo County Community College District

Revision	Description	Date

Revision	Description	Date

Job No.	300085
Date	09 APRIL 2009
Drawn by	REI/CAD TEAM
Checked by	THS/RW
Scale	AS SHOWN

ELECTRICAL PLAN SITE
E2.11

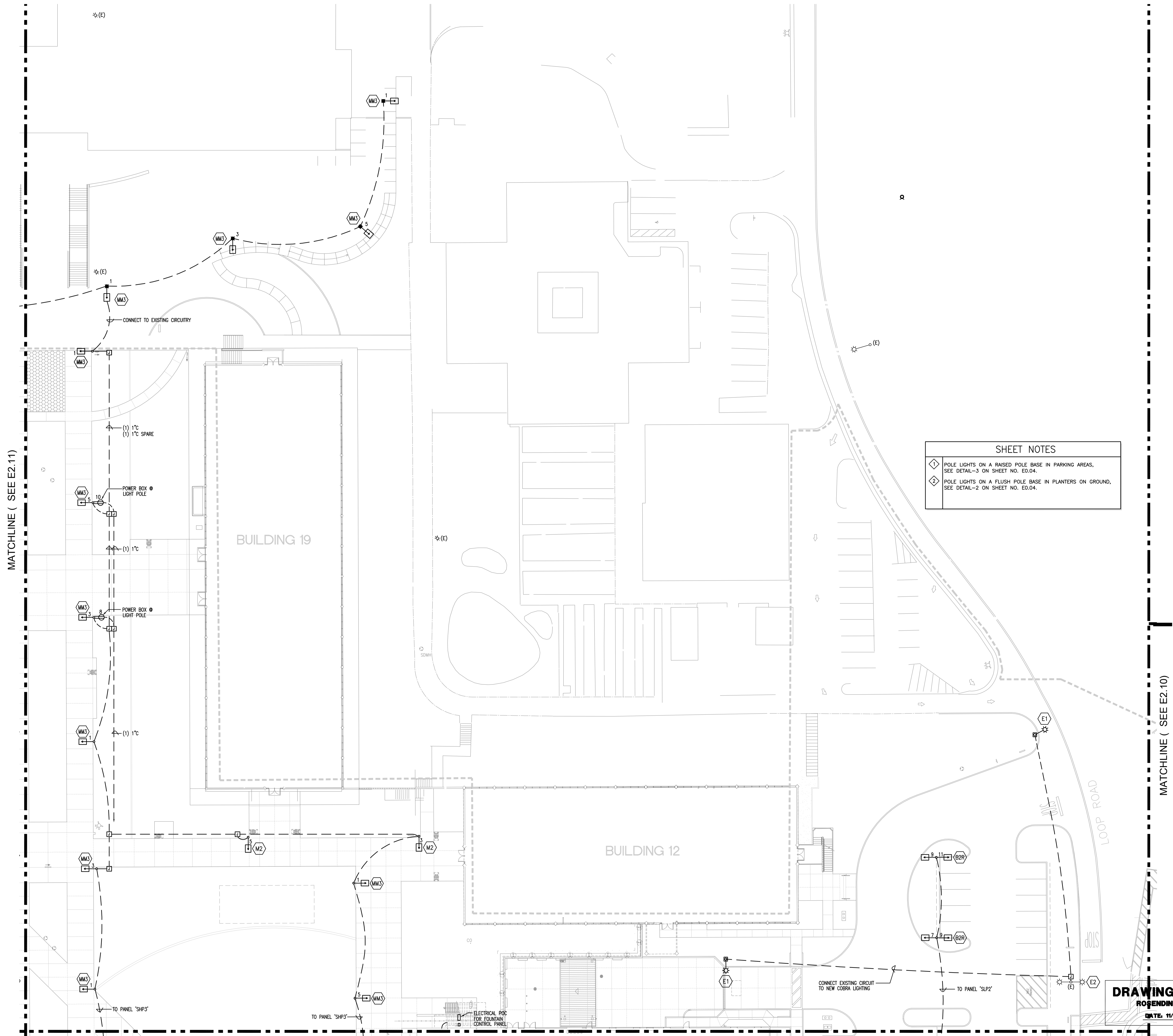


SHEET NOTES

- 1 POLE LIGHTS ON A RAISED POLE BASE IN PARKING AREAS, SEE DETAIL-3 ON SHEET NO. E0.04.
- 2 POLE LIGHTS ON A FLUSH POLE BASE IN PLANTERS ON GROUND, SEE DETAIL-2 ON SHEET NO. E0.04.

1 PARTIAL ELECTRICAL PLAN
SCALE: 1" = 20'-0"

DRAWING OF RECORD
ROSENDIN ELECTRIC, INC.
DATE: 11/04/11



SHEET NOTES

- 1 POLE LIGHTS ON A RAISED POLE BASE IN PARKING AREAS, SEE DETAIL-3 ON SHEET NO. E0.04.
- 2 POLE LIGHTS ON A FLUSH POLE BASE IN PLANTERS ON GROUND, SEE DETAIL-2 ON SHEET NO. E0.04.

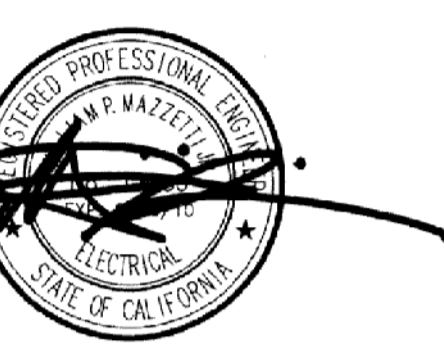
DRAWING OF RECORD
ROSENDIN ELECTRIC, INC.
 DATE: 11/04/11

1
1 PARTIAL ELECTRICAL PLAN
 SCALE: 1" = 20'-0"



McCarthy Building Companies, Inc.
 343 Sansome Street, 14th Floor
 San Francisco, California 94104
 P 415 1364-1339
 F 415 1397-5999

ROSENDIN ELECTRIC
 ELECTRIC
 270 CHERRY STREET
 SAN ANGELO, TEXAS 76901
 TEL: 817.293.8800
 FAX: 817.293.9800



IDENTIFICATION STAMP
 OF THE STATE ARCHITECT
 OFFICE OF REGULATION SERVICE
 APPL # 01-110097
 AC _____ FLS _____ SS _____
 DATE _____
 FILE NUMBER _____

This set of other project documents and of site, mechanical and design incorporated herein and hereafter shall remain the property of LPA, Inc. LPA, Inc. and its consultants shall be held harmless in any and all respects for any claims or damages that may arise out of the use of these project documents. LPA hereby grants license to the recipient to use these project documents for the project identified hereon only. Any reproduction or modification (in whole or in part) without the written consent of LPA and its consultants shall be deemed a violation of this agreement. LPA and its consultants shall not be held responsible for any errors or omissions in these project documents. LPA and its consultants shall not be held responsible for any discrepancies between these project documents and the existing conditions.

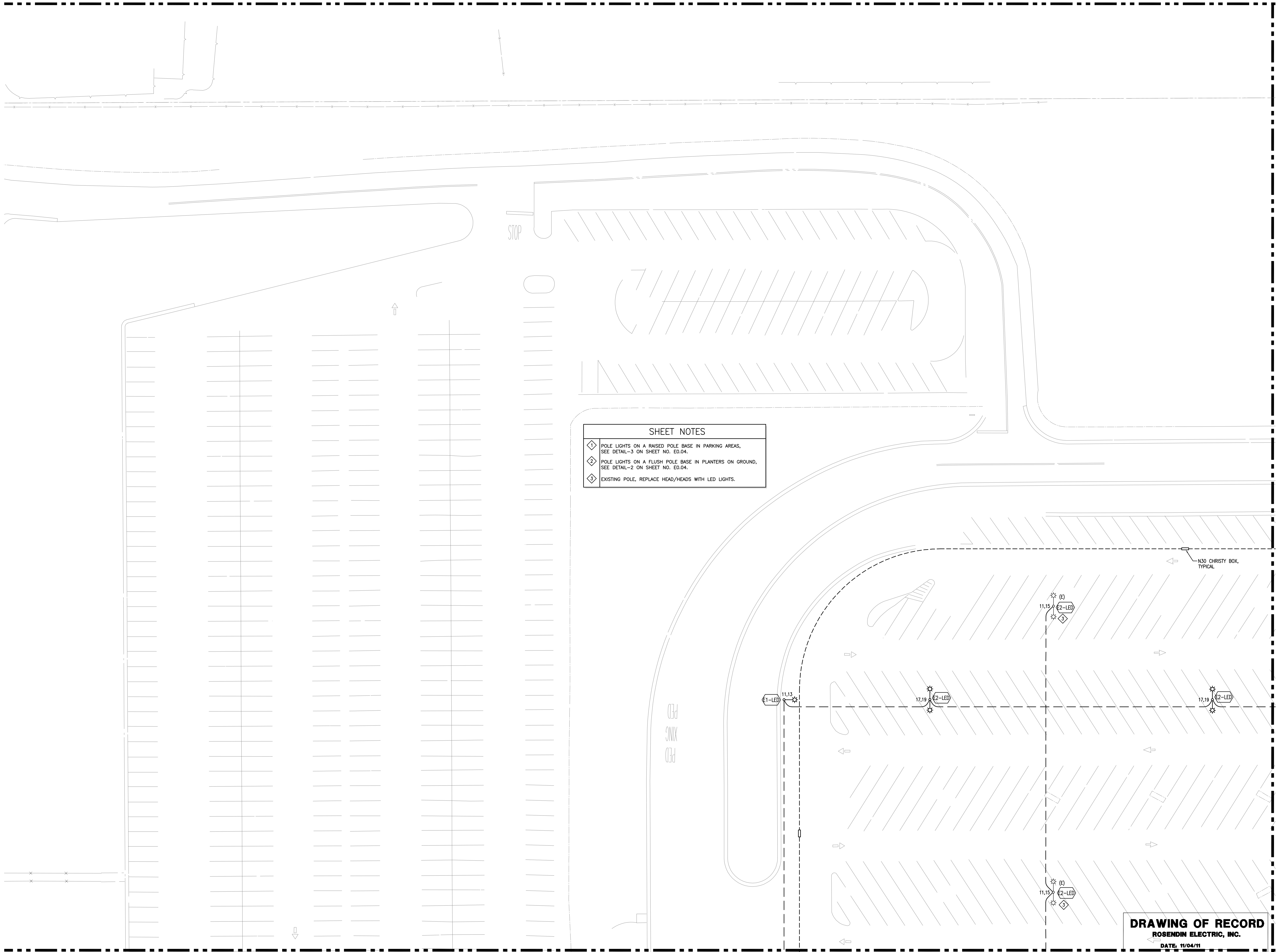
© Copyright 2008

College of San Mateo
 Site Package
 San Mateo, CA
 Developed for
 San Mateo County Community College District

Revision	Description	Date

Revision	Description	Date
19	SEPT 2008	
18	APRIL 2009	
17	OCT 2008	
16	OCT 2008	
15	OCT 2008	
14	OCT 2008	
13	OCT 2008	
12	OCT 2008	
11	OCT 2008	
10	AUG 2010	
9	AUG 2010	
8	AUG 2010	
7	NOV 2011	
6	NOV 2011	
5	NOV 2011	
4	NOV 2011	
3	NOV 2011	
2	NOV 2011	
1	NOV 2011	

Job No.	300085
Date	09 APRIL 2009
Drawn by	REI CAD TEAM
Checked by	THS/RW
Scale	AS SHOWN
ELECTRICAL PLAN SITE	
E2.12	



SHEET NOTES

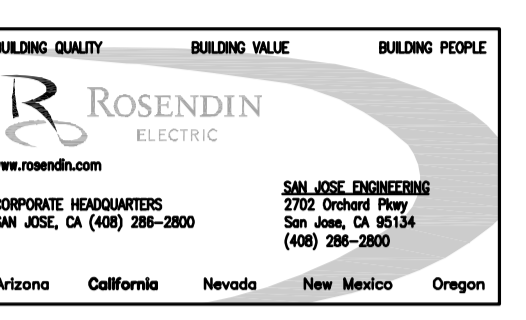
- 1 POLE LIGHTS ON A RAISED POLE BASE IN PARKING AREAS, SEE DETAIL-3 ON SHEET NO. E0.04.
- 2 POLE LIGHTS ON A FLUSH POLE BASE IN PLANTERS ON GROUND, SEE DETAIL-2 ON SHEET NO. E0.04.
- 3 EXISTING POLE, REPLACE HEAD/HEADS WITH LED LIGHTS.

1 PARTIAL ELECTRICAL PLAN
 E2.13 SCALE: 1" = 20'-0"

DRAWING OF RECORD
 ROSENDIN ELECTRIC, INC.
 DATE: 11/04/11



McCarthy Building Companies, Inc.
 343 Sansome Street, 14th Floor
 San Francisco, California 94104
 P 415 1364-1339
 F 415 1397-5999



IDENTIFICATION STAMP
 DIV. OF THE STATE ARCHITECT
 OFFICE OF REGULATION SERVICE
 APPL. #: 01-110097
 AC: FLS SS
 DATE: _____
 FILE NUMBER: _____

This set of other project documents and of site, methods, and design incorporated herein are herewith made a part of this project. It is the responsibility of the contractor to verify the accuracy of all information and to obtain all necessary permits and approvals. The contractor shall be responsible for any reproduction or modification (rework) in not only unapproved but also unapproved work of other parties who have been authorized by the contractor to make changes to the project. The contractor shall be responsible for any reproduction or modification (rework) in not only unapproved but also unapproved work of other parties who have been authorized by the contractor to make changes to the project. The contractor shall be responsible for any reproduction or modification (rework) in not only unapproved but also unapproved work of other parties who have been authorized by the contractor to make changes to the project.

© Copyright 2008

College of San Mateo
 Site Package
 San Mateo, CA
 Developed for
 San Mateo County Community College District

Revision	Description	Date
1	ISSUE FOR PERMITS	09 APRIL 2009
2	ISSUE FOR RECORD	05 APRIL 2010
3	ISSUE FOR RECORD	05 APRIL 2010
4	ISSUE FOR RECORD	05 APRIL 2010
5	ISSUE FOR RECORD	05 APRIL 2010
6	ISSUE FOR RECORD	05 APRIL 2010
7	ISSUE FOR RECORD	05 APRIL 2010
8	ISSUE FOR RECORD	05 APRIL 2010
9	ISSUE FOR RECORD	05 APRIL 2010
10	ISSUE FOR RECORD	05 APRIL 2010
11	ISSUE FOR RECORD	05 APRIL 2010
12	ISSUE FOR RECORD	05 APRIL 2010
13	ISSUE FOR RECORD	05 APRIL 2010
14	ISSUE FOR RECORD	05 APRIL 2010
15	ISSUE FOR RECORD	05 APRIL 2010
16	ISSUE FOR RECORD	05 APRIL 2010
17	ISSUE FOR RECORD	05 APRIL 2010
18	ISSUE FOR RECORD	05 APRIL 2010
19	ISSUE FOR RECORD	05 APRIL 2010
20	ISSUE FOR RECORD	05 APRIL 2010
21	ISSUE FOR RECORD	05 APRIL 2010
22	ISSUE FOR RECORD	05 APRIL 2010
23	ISSUE FOR RECORD	05 APRIL 2010
24	ISSUE FOR RECORD	05 APRIL 2010
25	ISSUE FOR RECORD	05 APRIL 2010
26	ISSUE FOR RECORD	05 APRIL 2010
27	ISSUE FOR RECORD	05 APRIL 2010
28	ISSUE FOR RECORD	05 APRIL 2010
29	ISSUE FOR RECORD	05 APRIL 2010
30	ISSUE FOR RECORD	05 APRIL 2010
31	ISSUE FOR RECORD	05 APRIL 2010
32	ISSUE FOR RECORD	05 APRIL 2010
33	ISSUE FOR RECORD	05 APRIL 2010
34	ISSUE FOR RECORD	05 APRIL 2010
35	ISSUE FOR RECORD	05 APRIL 2010
36	ISSUE FOR RECORD	05 APRIL 2010
37	ISSUE FOR RECORD	05 APRIL 2010
38	ISSUE FOR RECORD	05 APRIL 2010
39	ISSUE FOR RECORD	05 APRIL 2010
40	ISSUE FOR RECORD	05 APRIL 2010
41	ISSUE FOR RECORD	05 APRIL 2010
42	ISSUE FOR RECORD	05 APRIL 2010
43	ISSUE FOR RECORD	05 APRIL 2010
44	ISSUE FOR RECORD	05 APRIL 2010
45	ISSUE FOR RECORD	05 APRIL 2010
46	ISSUE FOR RECORD	05 APRIL 2010
47	ISSUE FOR RECORD	05 APRIL 2010
48	ISSUE FOR RECORD	05 APRIL 2010
49	ISSUE FOR RECORD	05 APRIL 2010
50	ISSUE FOR RECORD	05 APRIL 2010
51	ISSUE FOR RECORD	05 APRIL 2010
52	ISSUE FOR RECORD	05 APRIL 2010
53	ISSUE FOR RECORD	05 APRIL 2010
54	ISSUE FOR RECORD	05 APRIL 2010
55	ISSUE FOR RECORD	05 APRIL 2010
56	ISSUE FOR RECORD	05 APRIL 2010
57	ISSUE FOR RECORD	05 APRIL 2010
58	ISSUE FOR RECORD	05 APRIL 2010
59	ISSUE FOR RECORD	05 APRIL 2010
60	ISSUE FOR RECORD	05 APRIL 2010
61	ISSUE FOR RECORD	05 APRIL 2010
62	ISSUE FOR RECORD	05 APRIL 2010
63	ISSUE FOR RECORD	05 APRIL 2010
64	ISSUE FOR RECORD	05 APRIL 2010
65	ISSUE FOR RECORD	05 APRIL 2010
66	ISSUE FOR RECORD	05 APRIL 2010
67	ISSUE FOR RECORD	05 APRIL 2010
68	ISSUE FOR RECORD	05 APRIL 2010
69	ISSUE FOR RECORD	05 APRIL 2010
70	ISSUE FOR RECORD	05 APRIL 2010
71	ISSUE FOR RECORD	05 APRIL 2010
72	ISSUE FOR RECORD	05 APRIL 2010
73	ISSUE FOR RECORD	05 APRIL 2010
74	ISSUE FOR RECORD	05 APRIL 2010
75	ISSUE FOR RECORD	05 APRIL 2010
76	ISSUE FOR RECORD	05 APRIL 2010
77	ISSUE FOR RECORD	05 APRIL 2010
78	ISSUE FOR RECORD	05 APRIL 2010
79	ISSUE FOR RECORD	05 APRIL 2010
80	ISSUE FOR RECORD	05 APRIL 2010
81	ISSUE FOR RECORD	05 APRIL 2010
82	ISSUE FOR RECORD	05 APRIL 2010
83	ISSUE FOR RECORD	05 APRIL 2010
84	ISSUE FOR RECORD	05 APRIL 2010
85	ISSUE FOR RECORD	05 APRIL 2010
86	ISSUE FOR RECORD	05 APRIL 2010
87	ISSUE FOR RECORD	05 APRIL 2010
88	ISSUE FOR RECORD	05 APRIL 2010
89	ISSUE FOR RECORD	05 APRIL 2010
90	ISSUE FOR RECORD	05 APRIL 2010
91	ISSUE FOR RECORD	05 APRIL 2010
92	ISSUE FOR RECORD	05 APRIL 2010
93	ISSUE FOR RECORD	05 APRIL 2010
94	ISSUE FOR RECORD	05 APRIL 2010
95	ISSUE FOR RECORD	05 APRIL 2010
96	ISSUE FOR RECORD	05 APRIL 2010
97	ISSUE FOR RECORD	05 APRIL 2010
98	ISSUE FOR RECORD	05 APRIL 2010
99	ISSUE FOR RECORD	05 APRIL 2010
100	ISSUE FOR RECORD	05 APRIL 2010

Revision	Description	Date
1	ISSUE FOR PERMITS	09 APRIL 2009
2	ISSUE FOR RECORD	05 APRIL 2010
3	ISSUE FOR RECORD	05 APRIL 2010
4	ISSUE FOR RECORD	05 APRIL 2010
5	ISSUE FOR RECORD	05 APRIL 2010
6	ISSUE FOR RECORD	05 APRIL 2010
7	ISSUE FOR RECORD	05 APRIL 2010
8	ISSUE FOR RECORD	05 APRIL 2010
9	ISSUE FOR RECORD	05 APRIL 2010
10	ISSUE FOR RECORD	05 APRIL 2010
11	ISSUE FOR RECORD	05 APRIL 2010
12	ISSUE FOR RECORD	05 APRIL 2010
13	ISSUE FOR RECORD	05 APRIL 2010
14	ISSUE FOR RECORD	05 APRIL 2010
15	ISSUE FOR RECORD	05 APRIL 2010
16	ISSUE FOR RECORD	05 APRIL 2010
17	ISSUE FOR RECORD	05 APRIL 2010
18	ISSUE FOR RECORD	05 APRIL 2010
19	ISSUE FOR RECORD	05 APRIL 2010
20	ISSUE FOR RECORD	05 APRIL 2010
21	ISSUE FOR RECORD	05 APRIL 2010
22	ISSUE FOR RECORD	05 APRIL 2010
23	ISSUE FOR RECORD	05 APRIL 2010
24	ISSUE FOR RECORD	05 APRIL 2010
25	ISSUE FOR RECORD	05 APRIL 2010
26	ISSUE FOR RECORD	05 APRIL 2010
27	ISSUE FOR RECORD	05 APRIL 2010
28	ISSUE FOR RECORD	05 APRIL 2010
29	ISSUE FOR RECORD	05 APRIL 2010
30	ISSUE FOR RECORD	05 APRIL 2010
31	ISSUE FOR RECORD	05 APRIL 2010
32	ISSUE FOR RECORD	05 APRIL 2010
33	ISSUE FOR RECORD	05 APRIL 2010
34	ISSUE FOR RECORD	05 APRIL 2010
35	ISSUE FOR RECORD	05 APRIL 2010
36	ISSUE FOR RECORD	05 APRIL 2010
37	ISSUE FOR RECORD	05 APRIL 2010
38	ISSUE FOR RECORD	05 APRIL 2010
39	ISSUE FOR RECORD	05 APRIL 2010
40	ISSUE FOR RECORD	05 APRIL 2010
41	ISSUE FOR RECORD	05 APRIL 2010
42	ISSUE FOR RECORD	05 APRIL 2010
43	ISSUE FOR RECORD	05 APRIL 2010
44	ISSUE FOR RECORD	05 APRIL 2010
45	ISSUE FOR RECORD	05 APRIL 2010
46	ISSUE FOR RECORD	05 APRIL 2010
47	ISSUE FOR RECORD	05 APRIL 2010
48	ISSUE FOR RECORD	05 APRIL 2010
49	ISSUE FOR RECORD	05 APRIL 2010
50	ISSUE FOR RECORD	05 APRIL 2010
51	ISSUE FOR RECORD	05 APRIL 2010
52	ISSUE FOR RECORD	05 APRIL 2010
53	ISSUE FOR RECORD	05 APRIL 2010
54	ISSUE FOR RECORD	05 APRIL 2010
55	ISSUE FOR RECORD	05 APRIL 2010
56	ISSUE FOR RECORD	05 APRIL 2010
57	ISSUE FOR RECORD	05 APRIL 2010
58	ISSUE FOR RECORD	05 APRIL 2010
59	ISSUE FOR RECORD	05 APRIL 2010
60	ISSUE FOR RECORD	05 APRIL 2010
61	ISSUE FOR RECORD	05 APRIL 2010
62	ISSUE FOR RECORD	05 APRIL 2010
63	ISSUE FOR RECORD	05 APRIL 2010
64	ISSUE FOR RECORD	05 APRIL 2010
65	ISSUE FOR RECORD	05 APRIL 2010
66	ISSUE FOR RECORD	05 APRIL 2010
67	ISSUE FOR RECORD	05 APRIL 2010
68	ISSUE FOR RECORD	05 APRIL 2010
69	ISSUE FOR RECORD	05 APRIL 2010
70	ISSUE FOR RECORD	05 APRIL 2010
71	ISSUE FOR RECORD	05 APRIL 2010
72	ISSUE FOR RECORD	05 APRIL 2010
73	ISSUE FOR RECORD	05 APRIL 2010
74	ISSUE FOR RECORD	05 APRIL 2010
75	ISSUE FOR RECORD	05 APRIL 2010
76	ISSUE FOR RECORD	05 APRIL 2010
77	ISSUE FOR RECORD	05 APRIL 2010
78	ISSUE FOR RECORD	05 APRIL 2010
79	ISSUE FOR RECORD	05 APRIL 2010
80	ISSUE FOR RECORD	05 APRIL 2010
81	ISSUE FOR RECORD	05 APRIL 2010
82	ISSUE FOR RECORD	05 APRIL 2010
83	ISSUE FOR RECORD	05 APRIL 2010
84	ISSUE FOR RECORD	05 APRIL 2010
85	ISSUE FOR RECORD	05 APRIL 2010
86	ISSUE FOR RECORD	05 APRIL 2010
87	ISSUE FOR RECORD	05 APRIL 2010
88	ISSUE FOR RECORD	05 APRIL 2010
89	ISSUE FOR RECORD	05 APRIL 2010
90	ISSUE FOR RECORD	05 APRIL 2010
91	ISSUE FOR RECORD	05 APRIL 2010
92	ISSUE FOR RECORD	05 APRIL 2010
93	ISSUE FOR RECORD	05 APRIL 2010
94	ISSUE FOR RECORD	05 APRIL 2010
95	ISSUE FOR RECORD	05 APRIL 2010
96	ISSUE FOR RECORD	05 APRIL 2010
97	ISSUE FOR RECORD	05 APRIL 2010
98	ISSUE FOR RECORD	05 APRIL 2010
99	ISSUE FOR RECORD	05 APRIL 2010
100	ISSUE FOR RECORD	05 APRIL 2010

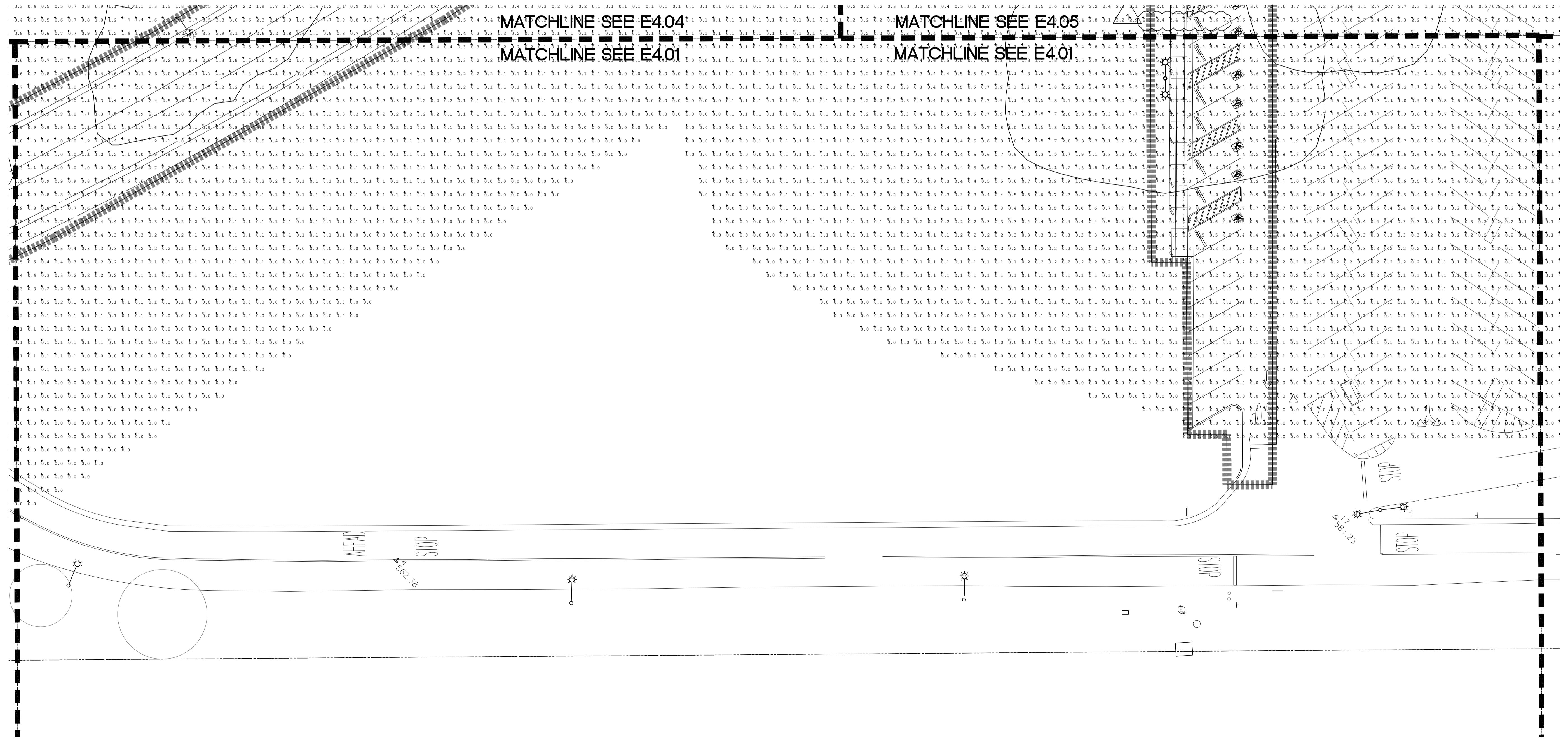
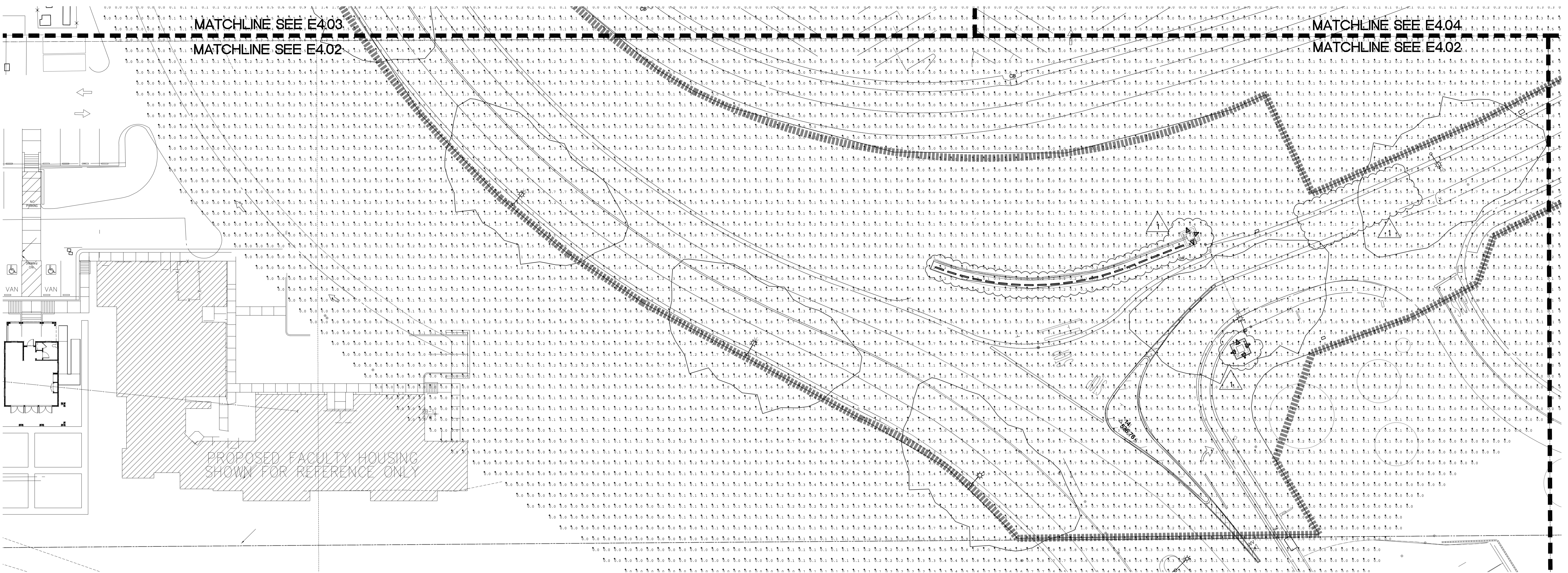
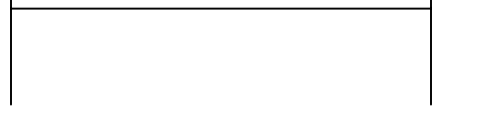
Job No.	300085
Date	09 APRIL 2009
Drawn by	REI/CAD TEAM
Checked by	THS/RW
Scale	AS SHOWN
ELECTRICAL PLAN SITE	
E2.13	

Revision	Description	Date

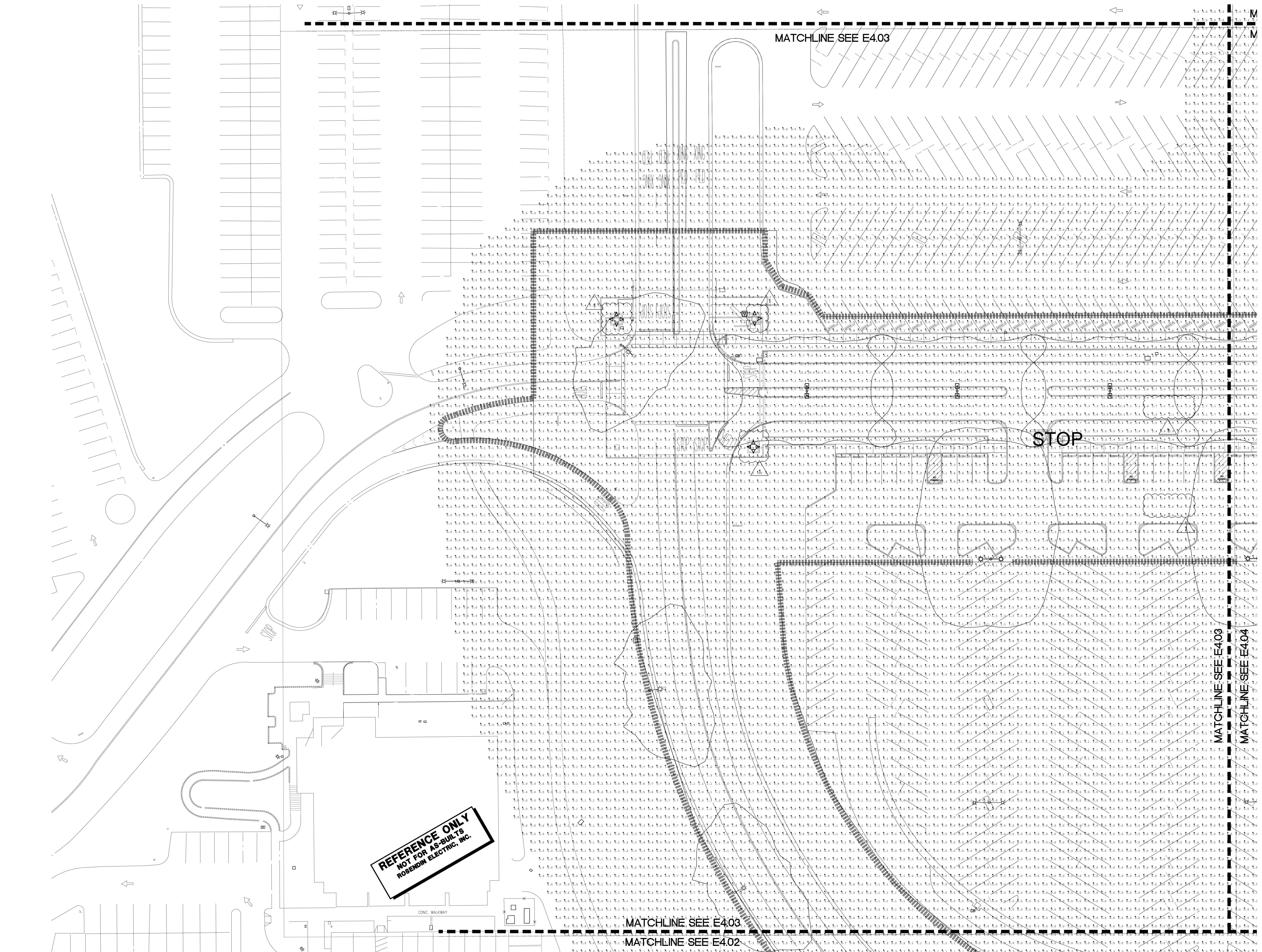
Revision	Description	Date

Job No.	300085
Date	09 APRIL 2009
Drawn by	REI/CAD/TEAM
Checked by	THS/RW
Scale	AS SHOWN

Site Lighting Plan -
Ltg. Extended
Photometric
E4.01



**REFERENCE ONLY
NOT FOR AS-BUILTS**
ROSENDIN ELECTRIC, INC.



**REFERENCE ONLY
NOT FOR AS-BUILT'S
ROSENDIN ELECTRIC, INC.**

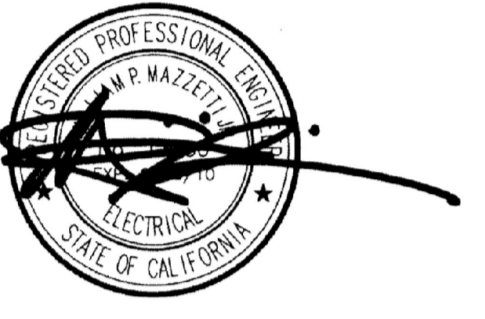


McCarthy Building Companies, Inc.
343 Sansome Street, 14th Floor
San Francisco, California 94104
P 415 364-1339
F 415 397-5999

ROSENDIN ELECTRIC
www.rosendin.com
COMMERCIAL DIVISION
100 CALIF. ST. #200-280
SAN FRANCISCO, CA 94111
(415) 397-2800

24 HOUR EMERGENCY
SAN FRANCISCO, CA
(415) 397-2800

Arizona California Nevada New Mexico Oregon



**IDENTIFICATION STAMP
OF THE STATE ARCHITECT
OFFICE OF REGULATION SERVICE**

APPL. # 01-110097

AC _____ FLS _____ SS _____

DATE _____

FILE NUMBER: _____

The use of all other project documents and all files, including but not limited to, drawings, specifications, schedules, and reports, are the property of LPA, INC. LPA, INC. is not liable for any errors or omissions in this drawing, and is not responsible for any damage or injury resulting from the use of this drawing. LPA, INC. is not responsible for any damage or injury resulting from the use of this drawing. LPA, INC. is not responsible for any damage or injury resulting from the use of this drawing.

© Copyright 2008

**College of San Mateo
Site Package
San Mateo, CA**

Developed for
San Mateo County Community College District

Revision	Description	Date

Revision	Description	Date
1	DSR SUBMITTAL	19 SEPT 2008
2	DSR FINAL	09 APRIL 2009
3	ISSUE FOR CONSTRUCTION	15 OCT 2009
4	ISSUE FOR RECORD	19 OCT 2009
5	ISSUE FOR CONSTRUCTION	19 OCT 2009

Job No.	300085
Date	09 APRIL 2009
Drawn by	REI CAD TEAM
Checked by	THS/RW
Scale	AS SHOWN
Site Lighting Plan - Ltg. Extended Photometric E4.03	



IDENTIFICATION STAMP
 OF THE STATE ARCHITECT
 OFFICE OF REGULATION & SERVICE

APPL # 01-110097
 AC: FLS SS
 DATE _____

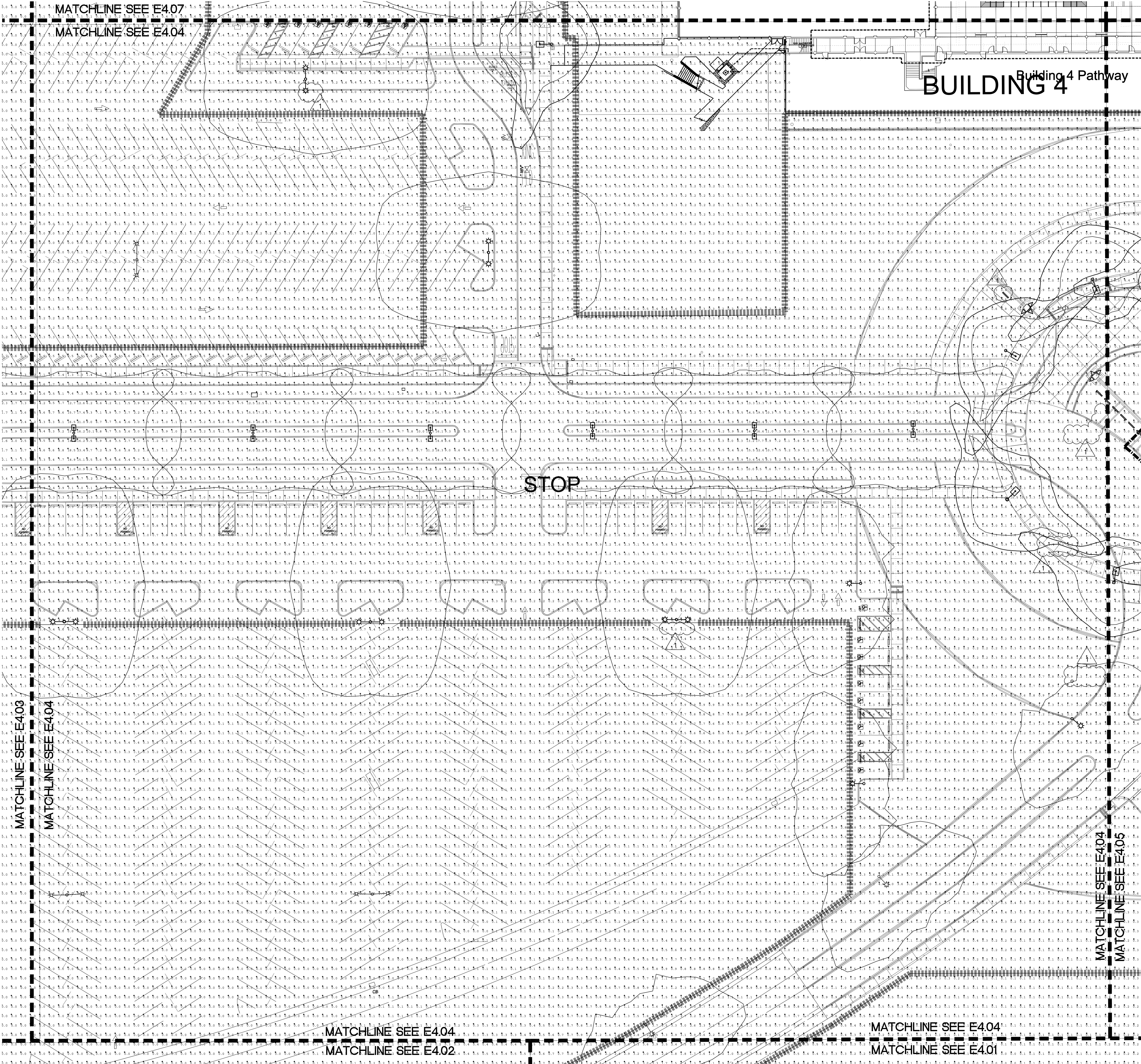
FILE NUMBER: _____

The use of all other project documents and all their contents, including and design incorporated herein or reference to same, as part of this document, is hereby acknowledged. I/We certify that I/We are not providing or accepting any compensation for the preparation of this document on the basis of any special relationship with the State. I/We hereby certify that this document is a true and correct copy of the original document, and I/We are not aware of any changes, additions or deletions made to the original document. I/We warrant that this document is a true and correct copy of the original document, and I/We are not aware of any changes, additions or deletions made to the original document.

© Copyright 2008

College of San Mateo
 Site Package
 San Mateo, CA

Developed for
 San Mateo County Community College District

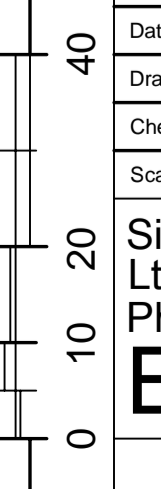


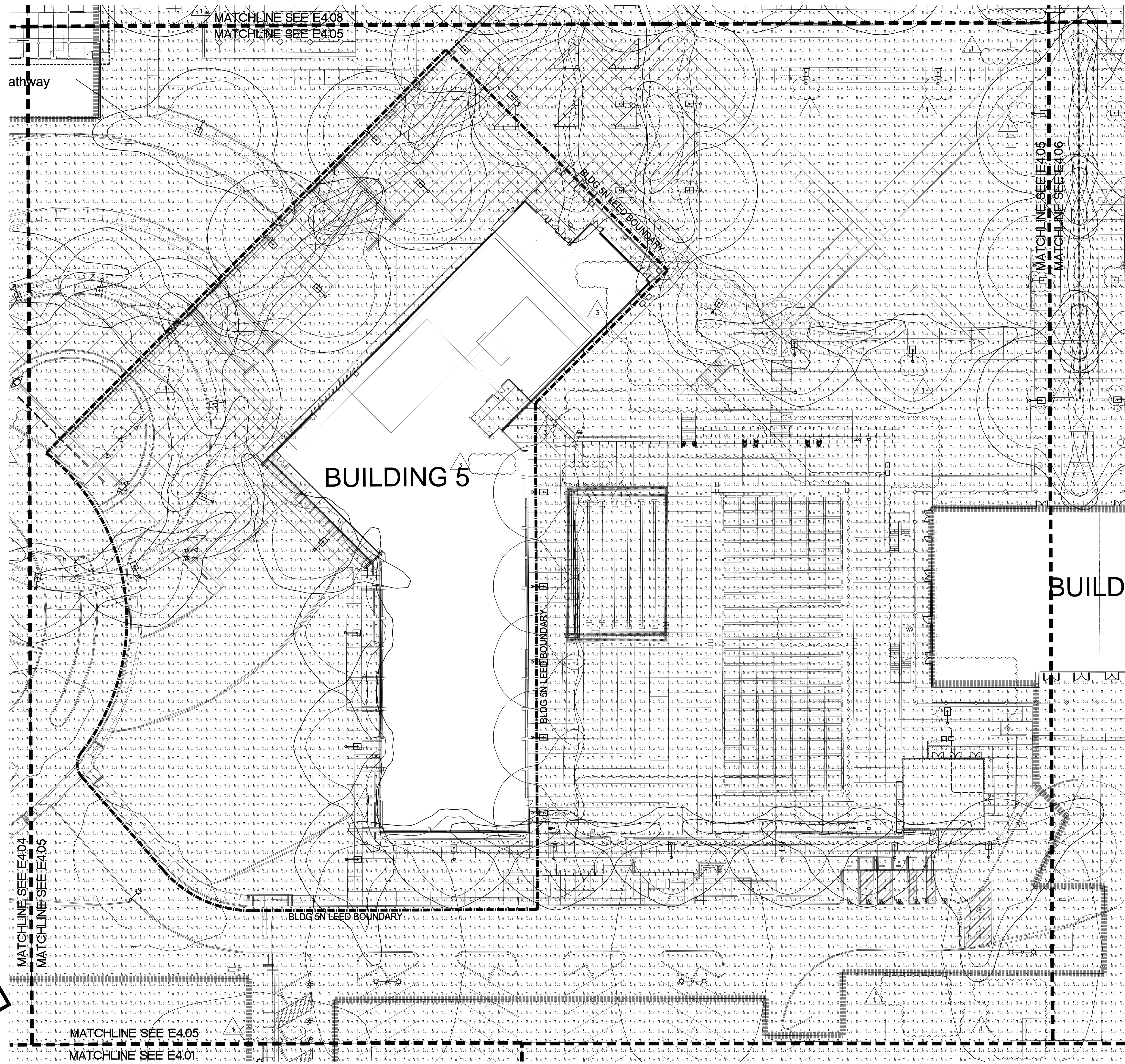
REFERENCE ONLY
 NOT FOR AS-BUILT'S
 ROSENDIN ELECTRIC, INC.

Revision	Description	Date

Revision	Description	Date

Job No.	300085
Date	09 APRIL 2009
Drawn by	REI/CAD TEAM
Checked by	THS/RWR
Scale	AS SHOWN
Site Lighting Plan -	
Ltg. Extended	
Photometric	
E4.04	

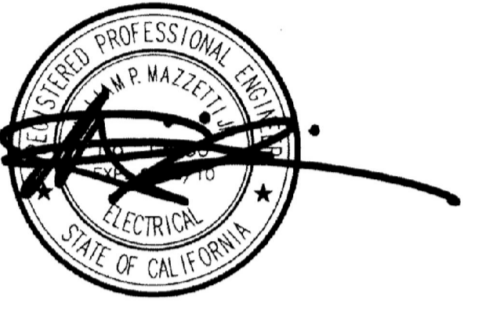
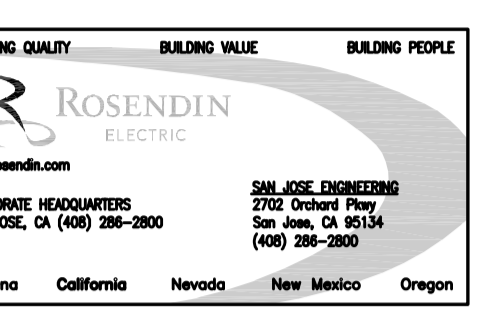




REFERENCE ONLY
 NOT FOR AS-BUILTS
 ROSENDIN ELECTRIC, INC.



McCarthy Building Companies, Inc.
 343 Sansome Street, 14th Floor
 San Francisco, California 94104
 P 415 | 364-1339
 F 415 | 397-5999



IDENTIFICATION STAMP
 DIV. OF THE STATE ARCHITECT
 OFFICE OF REGULATION SERVICE

APPL. # 01-110097

AC: _____ FLS: _____ SS: _____
 DATE: _____

FILE NUMBER: _____

This and all other project documents and all their contents, including any digital information herein, are the property of LPA, Inc. LPA and its affiliates shall not be held responsible for any errors or omissions in this document. LPA hereby disclaims any liability for any damages, including consequential or punitive damages, arising from the use of this document. LPA and its affiliates shall not be held responsible for any damages, including consequential or punitive damages, arising from the use of this document. LPA and its affiliates shall not be held responsible for any damages, including consequential or punitive damages, arising from the use of this document.

© Copyright 2008

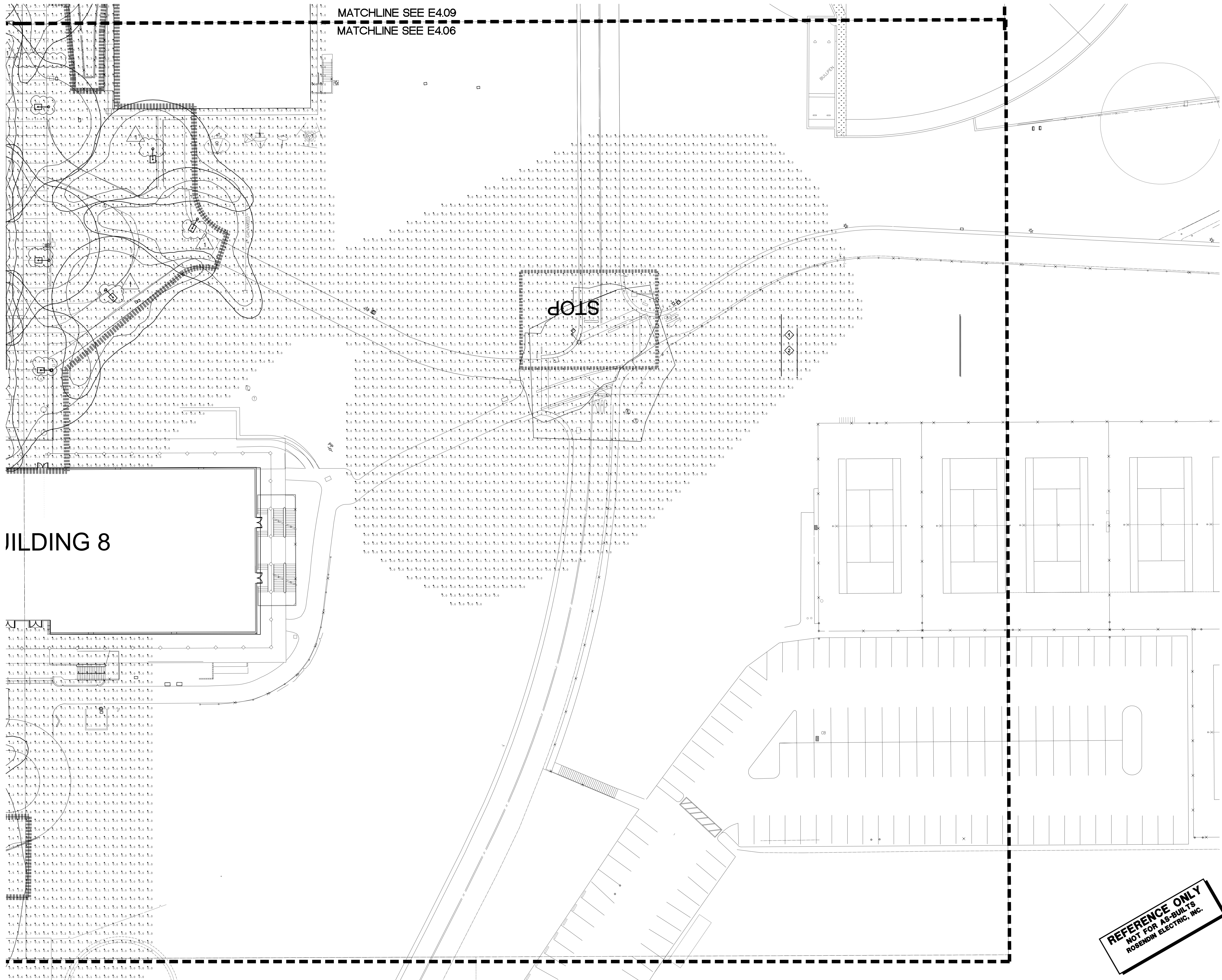
College of San Mateo
 Site Package
 San Mateo, CA

Developed for
 San Mateo County Community College District

Revision	Description	Date

Revision	Description	Date

Job No.	300085
Date	09 APRIL 2009
Drawn by	REI CAD TEAM
Checked by	THS/RW
Scale	AS SHOWN
Site Lighting Plan - Ltg. Extended Photometric	
E4.05	



MATCHLINE SEE E4.09
MATCHLINE SEE E4.06

BUILDING 8

STOP

REFERENCE ONLY
NOT FOR AS-BUILTS
ROSENDIN ELECTRIC, INC.



McCarthy Building Companies, Inc.
343 Sansome Street, 14th Floor
San Francisco, California 94104
P 415 | 364-1339
F 415 | 397-5999

ROSENDIN ELECTRIC
www.rosendin.com
CONTRACTORS
2500 Market Street
San Jose, CA 95131
(408) 253-2800
2845 JULE ROAD
San Jose, CA 95134
(408) 253-2800
Arkansas California Nevada New Mexico Oregon



IDENTIFICATION STAMP
OF THE STATE ARCHITECT
OFFICE OF REGULATION SERVICE
APPL. #: 01-110097
AC: _____ FLS: _____ SS: _____
DATE: _____
FILE NUMBER: _____

The use of all other project documents and all those containing information not incorporated herein or referenced to herein is the responsibility of the user. All project documents are the property of UPL, INC. UPL will accept no liability and is not to be used for any purpose not intended by UPL, INC. UPL hereby disclaims any and all liability for any errors, omissions, or inaccuracies in this document. UPL's liability is limited to the extent of the fee received by UPL for the preparation or modification (revisions) of this document. UPL and UPL's Consultants make no representation or warranty of any kind regarding the accuracy, reliability, or completeness of the information contained herein. UPL and UPL's Consultants make no representation or warranty of any kind regarding the accuracy, reliability, or completeness of any information contained herein. UPL and UPL's Consultants make no representation or warranty of any kind regarding the accuracy, reliability, or completeness of any information contained herein. UPL and UPL's Consultants make no representation or warranty of any kind regarding the accuracy, reliability, or completeness of any information contained herein.

© Copyright 2008

College of San Mateo
Site Package
San Mateo, CA
Developed for
San Mateo County Community College District

Revision	Description	Date

Revision	Description	Date
1	DESIGN SUBMITTAL	19 SEPT 2008
2	DESIGN FINISH	09 APRIL 2009
3	PLAN CHECK COMMENTS-REV	19 OCT 2009
4	DRAWING OF RECORD	19 OCT 2009
5	POST LIC & TEL/DATA REV	19 OCT 2009

Job No. 300085
Date 09 APRIL 2009
Drawn by REI CAD TEAM
Checked by THSR/RW
Scale AS SHOWN

Site Lighting Plan -
Ltg. Extended
Photometric
E4.06