

IDENTIFICATION STAMP
 DIV. OF THE STATE ARCHITECT
 OFFICE OF REGULATION SERVICE
 APPL. #: 01-110097
 AC: _____ FLS: _____ SS: _____
 DATE: _____
 FILE NUMBER: 41-C1

This set of other project documents and all laws, ordinances and design incorporated herein are instruments of service. All project documents are the registered property of LPA, Inc. (LPA) and cannot be lawfully used in whole or in part for any project or program except as described in the contract documents between LPA and Client. LPA hereby grants limited notice that any project document may, reproduction or modification thereof, will not constitute a representation or liability on the part of LPA, its consultants, its subcontractors or any other parties involved with release of full liability and release of LPA and LPA's Consultants to the maximum extent allowed by law. Approval, claims or liabilities arising directly or indirectly from project documents remain.

Project documents describe design intent of work and are not representation of scope of existing conditions. LPA and LPA's Consultants make no representations concerning the accuracy of documents and are not responsible for any discrepancies between project documents and the existing conditions.

© Copyright 2008

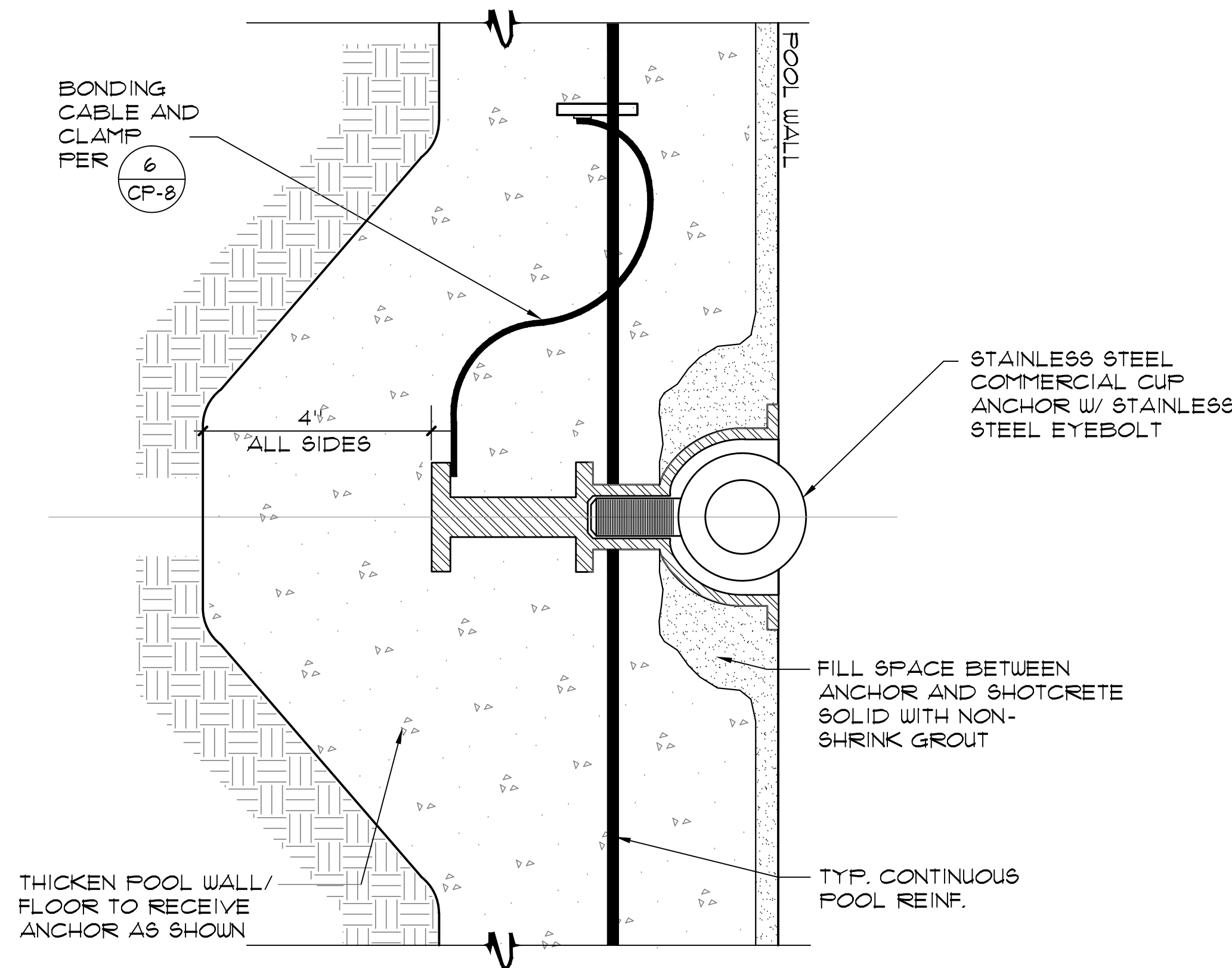
**College of San Mateo
 Site Package
 San Mateo, CA**

Revision	Description

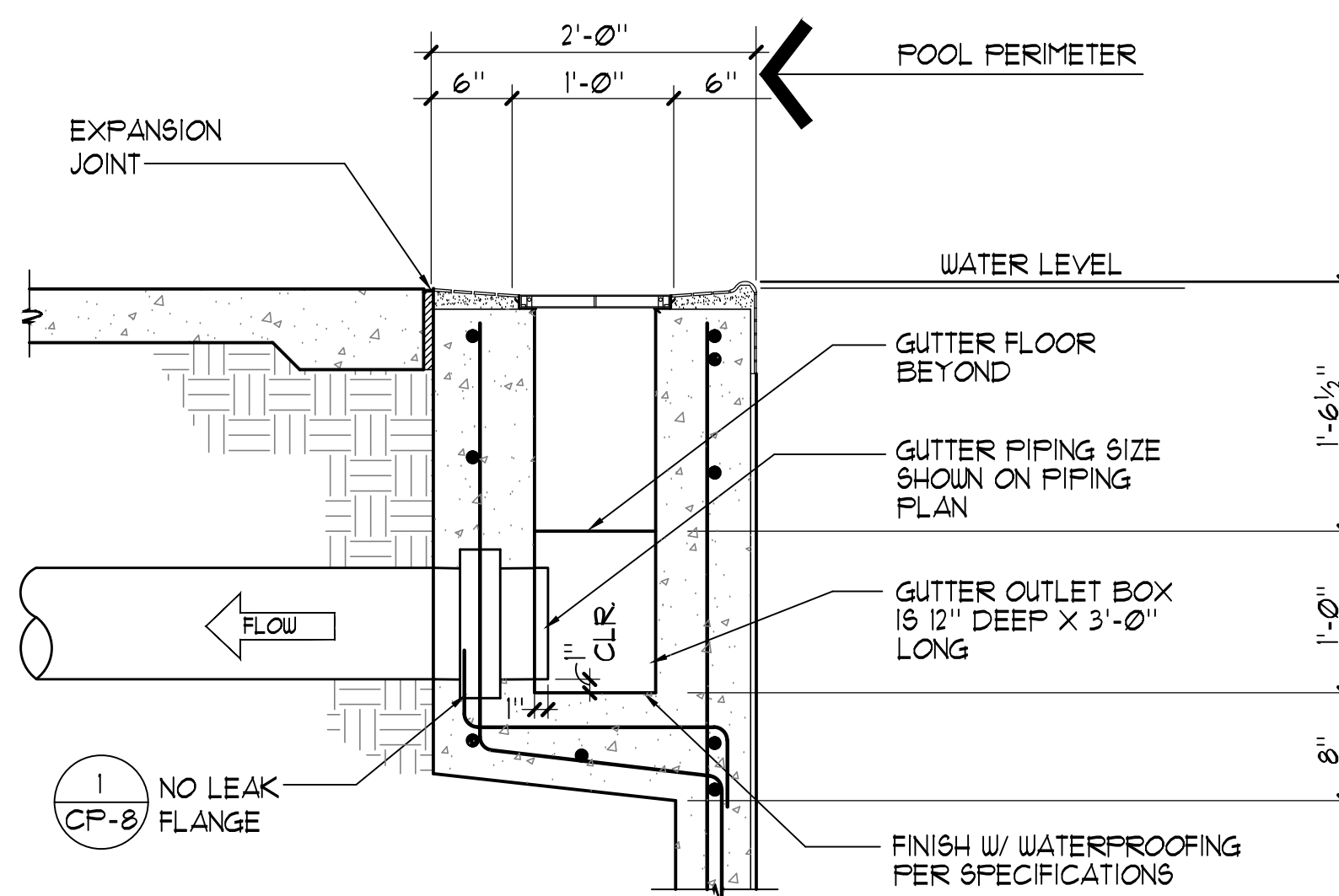
Revision	Description	Date

Job No.	27082.30
Date	09 APRIL 2009
Drawn by	NFC
Checked by	S.JF
Scale	AS NOTED

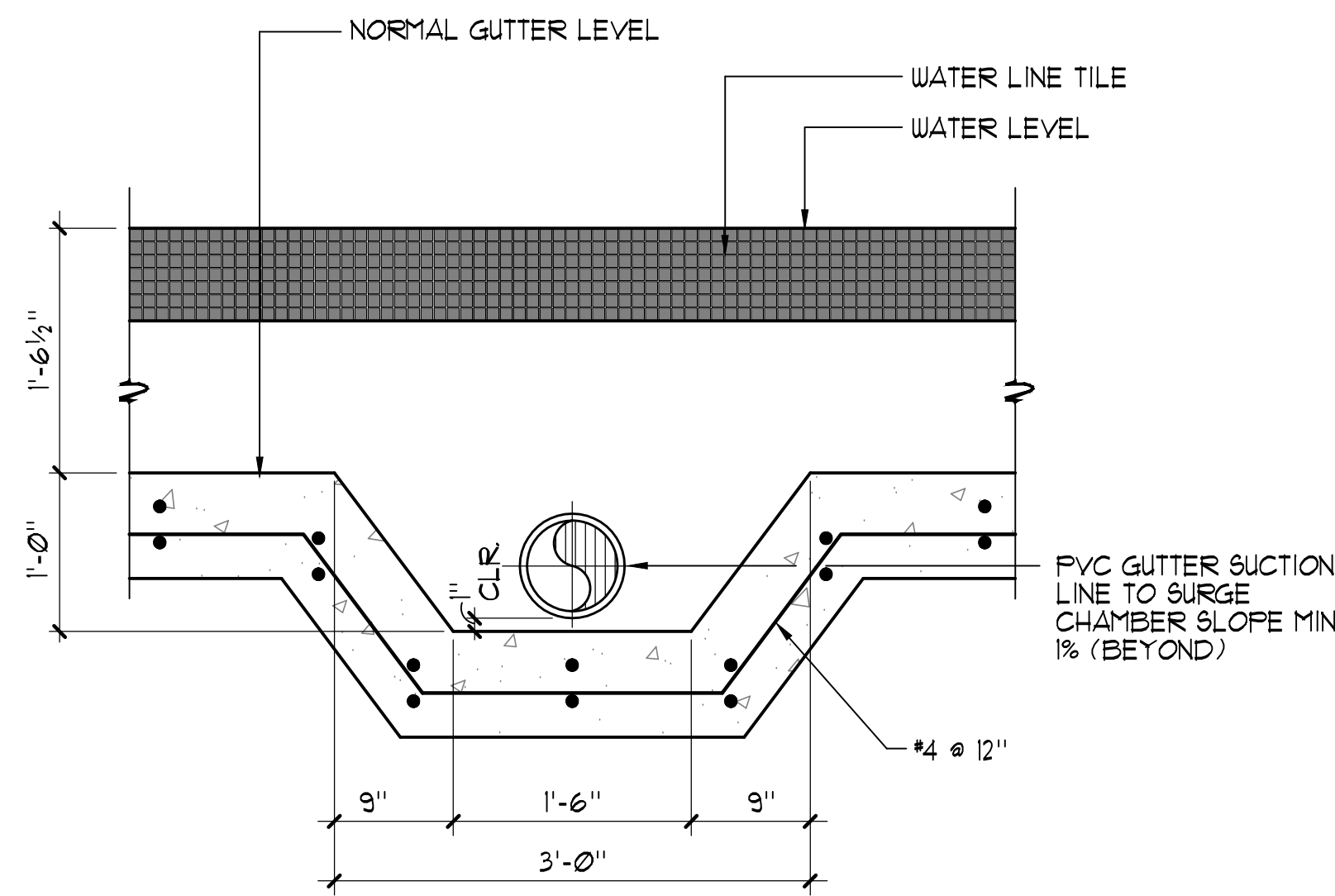
DETAILS
SP-5



1 HEAVY EYEBOLT ANCHOR 1/2" x 1"-Ø"

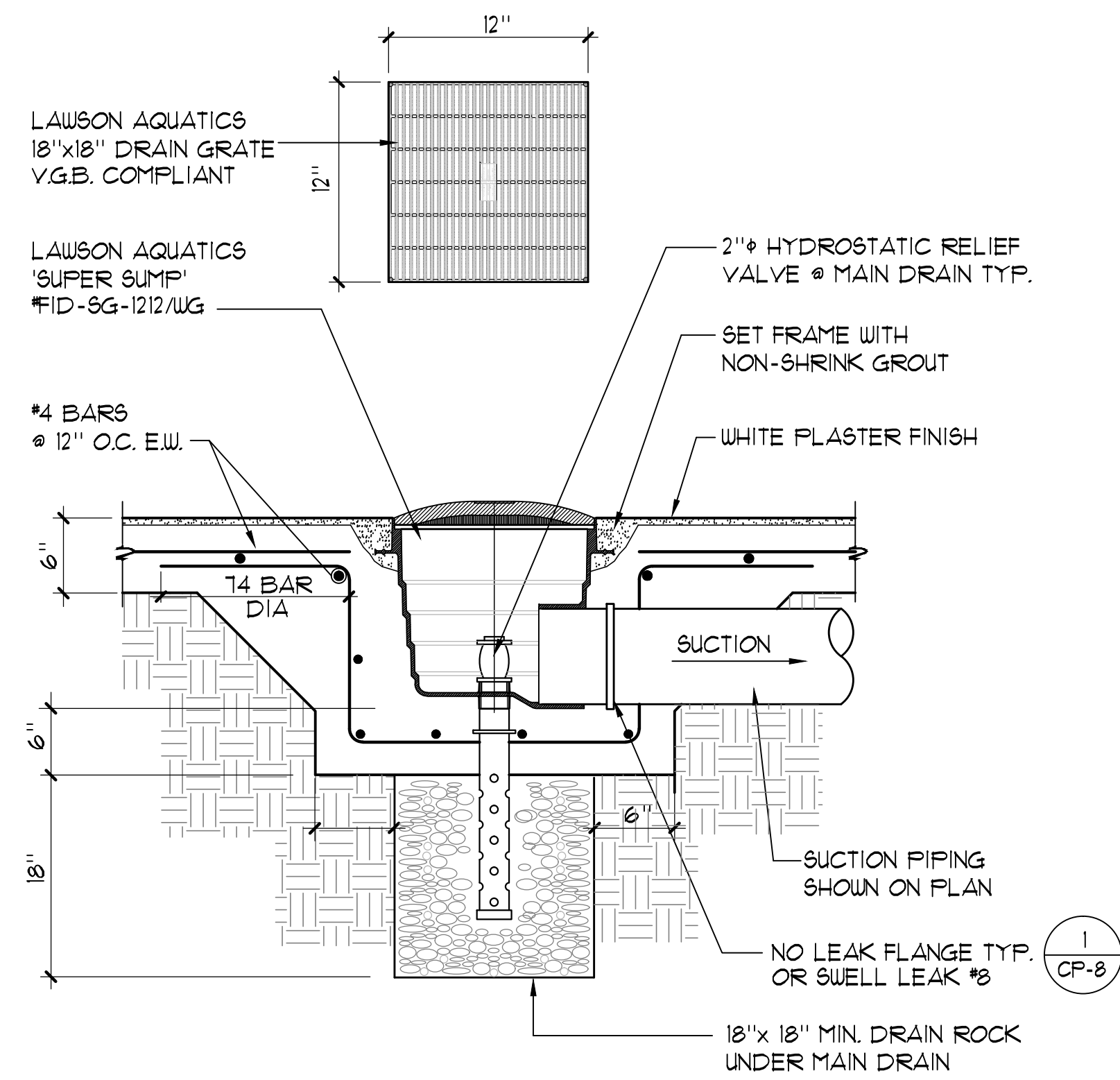


SECTION



ELEVATION

2 GUTTER OUTLET 1" x 1"-Ø"



3 MAIN DRAIN NO SCLAE