

IDENTIFICATION STAMP
DIV. OF THE STATE ARCHITECT
OFFICE OF REGULATION SERVICE
APPL. #: 01-110097
AC: _____ FLS: _____ SS: _____
DATE: _____
FILE NUMBER: 41-C1

This and all other project documents are the property of the Architect and shall remain confidential. No part of these documents may be reproduced or transmitted in any form or by any means, electronic, mechanical, photocopying, recording, or by any information storage and retrieval system, without the prior written permission of the Architect. The Architect's liability is limited to the professional services rendered and does not extend to any other services provided by the Architect or any other party. The Architect is not responsible for any errors or omissions in these documents or for any consequences arising therefrom. The Contractor shall be responsible for the accuracy of all data, drawings, specifications, and other documents submitted to the Architect. The Contractor shall be responsible for the accuracy of all data, drawings, specifications, and other documents submitted to the Architect. The Contractor shall be responsible for the accuracy of all data, drawings, specifications, and other documents submitted to the Architect.

© Copyright 2008

College of San Mateo
Site Package
San Mateo, CA

Developed for
San Mateo County Community College District

Revision	Description	Date
1	DSK SUBMITTAL	19 SEPT 2008
2	DSK FINAL	09 APRIL 2009
3	OWNER REVISIONS	11 SEPT 2009
4	PROJECT RECORD DRAWING	JUNE 2011

Job No.	27082.30
Date	09 APRIL 2009
Drawn by	NFC
Checked by	SJF
Scale	1/8"=1'-0"

COMPETITION POOL LAYOUT PLAN

CP-1.1

COMPETITION POOL DATA

SURFACE AREA	=	12,322 SQ. FT.
PERIMETER	=	478 FT.
DEPTH	=	7'-0" TO 7'-6"
VOLUME	=	669,115 GAL.
6 HR TURNOVER	=	1,859 GPM

LEGEND

MD	=	MAIN DRAIN	5
RA	=	ROPE ANCHOR	7
UL	=	UNDERWATER LIGHT	3
DM	=	DEPTH MARKER	3
NR	=	NO RUNNING	2
RP	=	RACING PLATFORM	2
LAD	=	LADDER	1
FUP	=	FLOATING WATERPOLO	4
RS	=	RECALL STANCHION	8
BS	=	BACKSTROKE STANCHION	8
WP	=	WATERPOLO	3
15M	=	15 METER MARKER	6
SA	=	STANCHION ANCHOR	8
DL	=	DISABLED LIFT	5
HB	=	HOSE BIBB	4
MGC	=	MOVEABLE GUARD CHAIR	6

REVISIONS: ADDED 4 WP RA
RELOCATED 8 WP ANCHORS
ADDED 4 SA

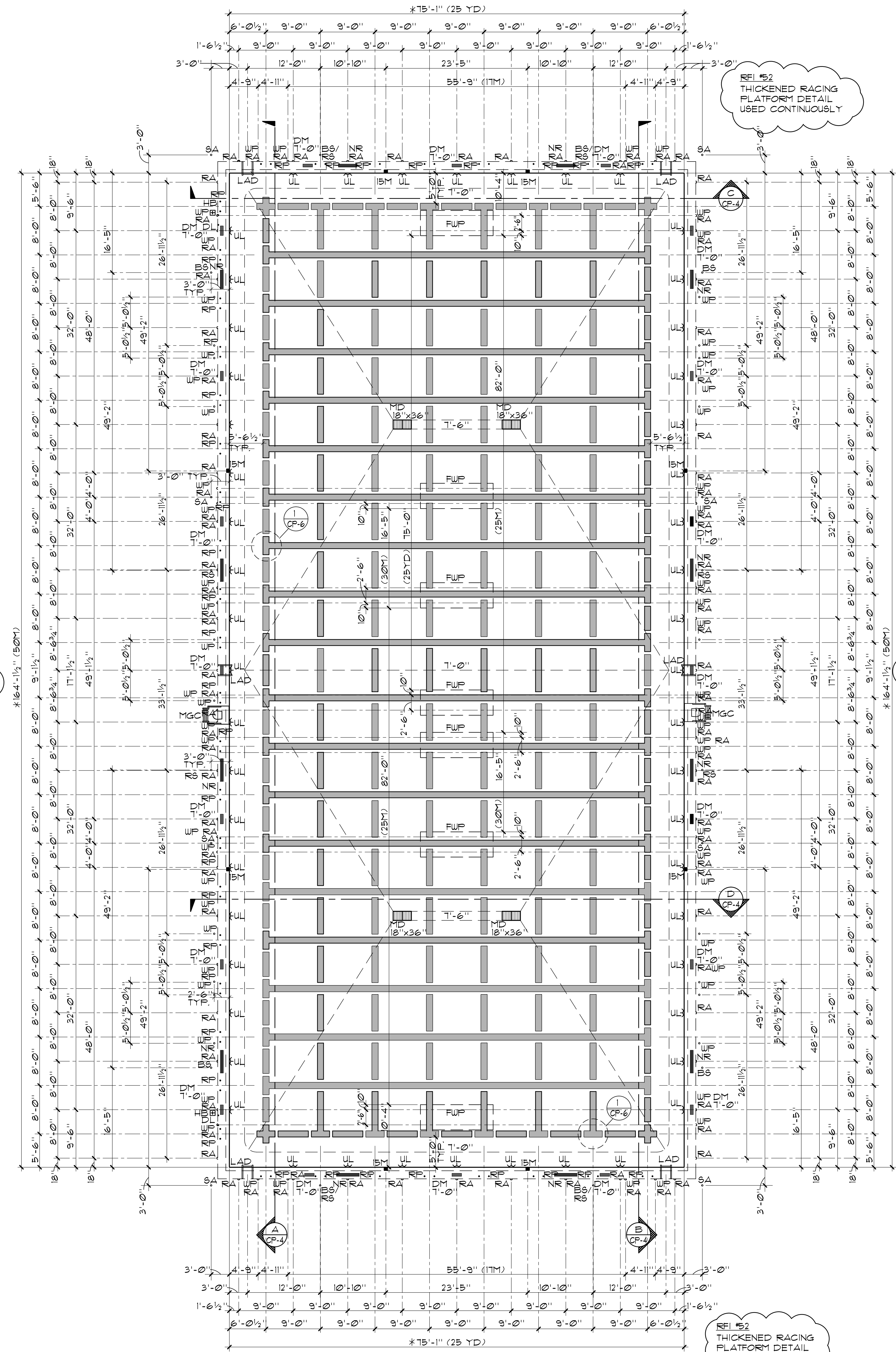
CERTIFICATION REQUIREMENTS

* THE CONTRACTOR SHALL RETAIN AN INDEPENDENT LICENSED SURVEYOR TO PROVIDE CERTIFICATION OF COMPLIANCE FOR REQUIRED POOL LENGTHS IN ACCORDANCE WITH USA SWIMMING REGULATIONS. THE SURVEYOR SHALL SUBMIT THE COMPLETED FORM TO USA SWIMMING NATIONAL EVENTS DEPARTMENT AND PROVIDE COPIES TO OWNER AND ARCHITECT.

LONG COURSE - 50M: (ALLOW FOR TOUCH PADS AT BOTH ENDS) 164'-1 1/2" MIN.; 164'-1 1/16" MAX.

SHORT COURSE - 25YDS: (ALLOW FOR TOUCH PADS AT ONE END) 75'-0 5/16" MIN.; 75'-1 3/16" MAX.

TOLERANCE AGAINST LENGTH SHALL EXTEND IN A VERTICAL PLANE 0.3M (12") ABOVE AND 0.2M (7 7/8") BELOW THE SURFACE OF THE WATER AT ALL POINTS OF BOTH END WALLS TYP. OF ALL COURSES.



COMPETITION POOL LAYOUT PLAN

1/8"=1'-0"

