

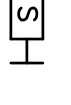
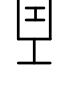
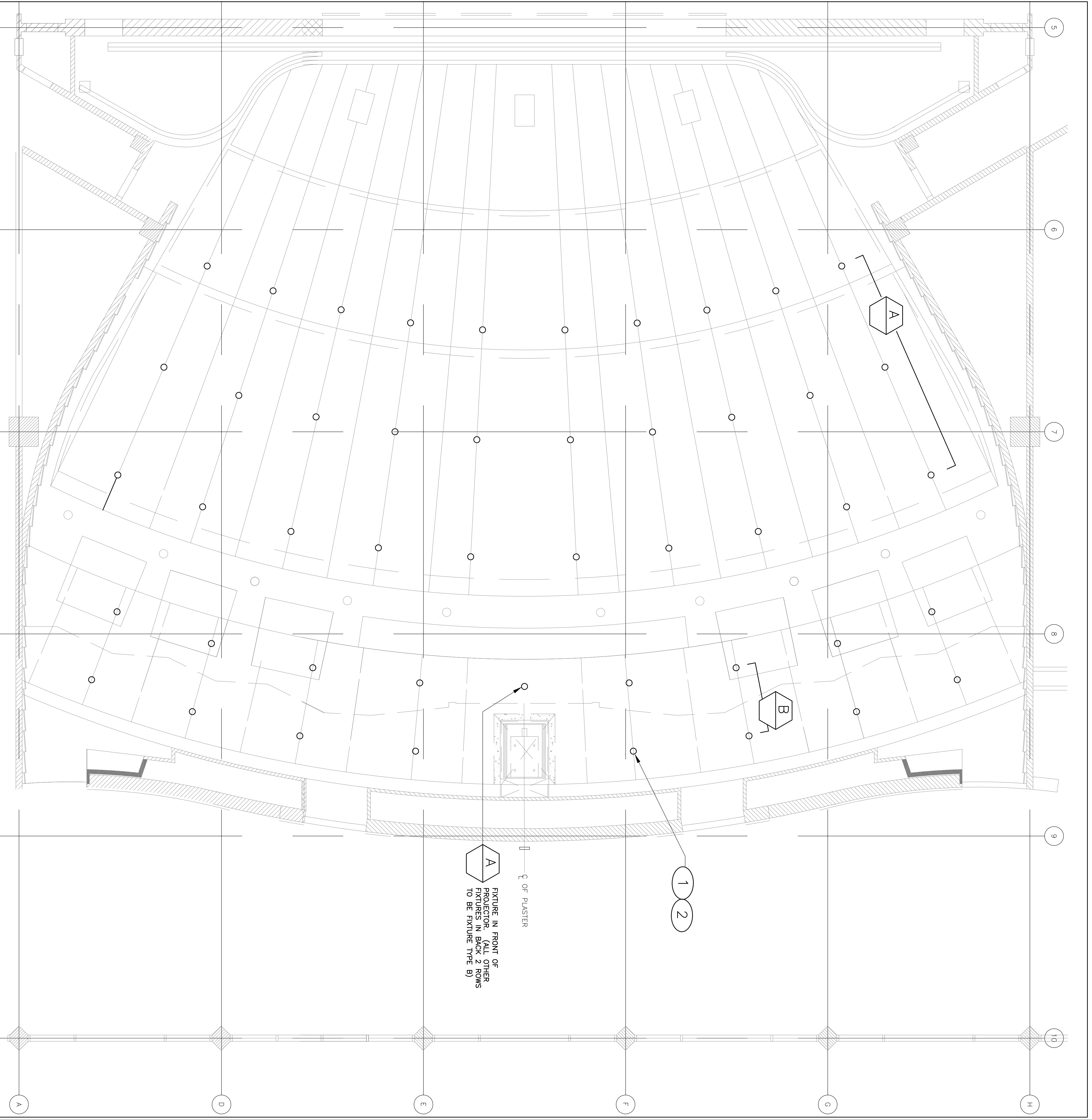


SCHEDULE OF LIGHTING FIXTURES				
REFER TO ARCHITECTURAL DETAILS TO DETERMINE NECESSARY FIXTURE MOUNTING ACCESSORIES AND TO APPLICABLE BUILDING CODES FOR REQUIRED FIXTURE SUPPORTS, AND FOR MAINTAINING CEILING FIRE RATINGS.				
TYPE	FIXTURE DESCRIPTION	MFR'S CATALOG NO.	MOUNTING	VOLTAGE [AMPS/WATTAGE]
A	RECESSED LED DOWNLIGHT, 2700 KELVIN, 2000 LUMENS, 45 DEGREE BEAM ANGLE, DMX-RDM CONTROLLED.	GOTHAM ICO 27/20 84R 45 120 DMXR, NPPI-60	RECESSED HT. AS NOTED	120 2700K WHITE LED 35 WATTS
B	RECESSED LED DOWNLIGHT, 2700 KELVIN, 2000 LUMENS, 70 DEGREE BEAM ANGLE, DMX-RDM CONTROLLED.	GOTHAM ICO 27/20 84R 70 120 DMXR, NPPI-60	RECESSED HT. AS NOTED	120 2700K WHITE LED 35 WATTS

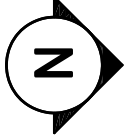
- SYMBOL**
-  Fixture type (see schedule for details)
 -  Down light luminaire, ceiling mounted in existing opening.
 -  Existing Snapshot Control Station
 -  Existing House Light Control Station

- DESCRIPTION**
- 1) PROVIDE DMX JUMPERS TO DAISY CHAIN DMX SIGNAL FROM THE DMX CONTROLLER TO ALL FIXTURES TYPE A & B TO MAXIMIZE NUMBER OF FIXTURES PER RUN IS 32. EXTEND DMX FROM NEW ETC 4-PORT NET 3 GATEWAY LOCATED IN ATTIC (EXACT LOCATION TBD)
- 2) DISCONNECT AND REMOVE EXISTING INCANDESCENT DOWNLIGHT FIXTURES AND DISPOSE OF AS DIRECTED BY OWNER. EXISTING APERTURES WILL BE REUSED FOR INSTALLATION OF NEW TYPE A & B FIXTURES. INSTALL NEW TYPE A & B FIXTURES. RUN EXISTING DIMMER RACKS TO NEW DMX SIGNALS. TERMINATE TYPE A & B DIMMER RACKS TO EXISTING HOME-RUNS TO EXISTING ETC DR12 DIMMER RACK.

SHEET NOTES



1 THEATER REFLECTED CEILING PLAN
1/4" = 1'-0"



SHEET TITLE
THEATER HOUSE
LIGHTING RETROFIT
REFLECTED CEILING
PLAN

SCALE: AS NOTED
DATE: September 16, 2014

TL.21

REVISIONS

SAN MATEO COUNTY COMMUNITY COLLEGE DISTRICT
CAÑADA/COLLEGE OF SAN MATEO
THEATER HOUSE LIGHTING RETROFIT
COLLEGE OF SAN MATEO - BUILDING 3
1700 WEST HILLSDALE BLVD., SAN MATEO, CA 94402

LANDRY & BOGAN
THEATRE CONSULTANTS
733 W. Evelyn Ave. Mountain View, CA 94041
(650) 969-5195 Fax 969-4965
heather@landb.com