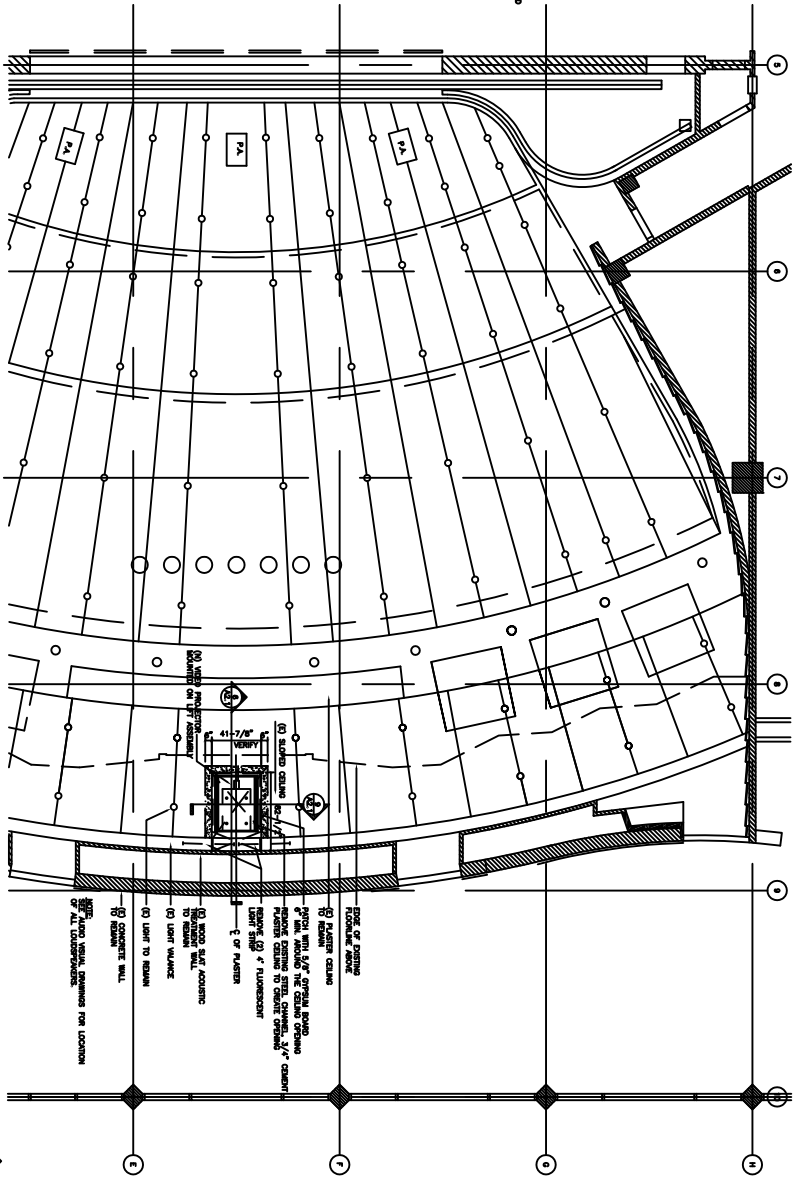
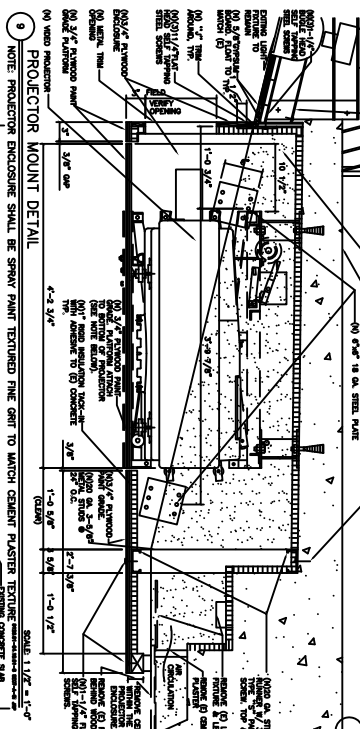


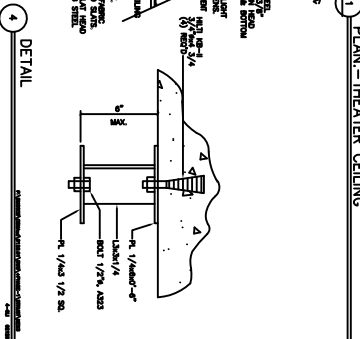
SECTION AT PROJECTOR MOUNT



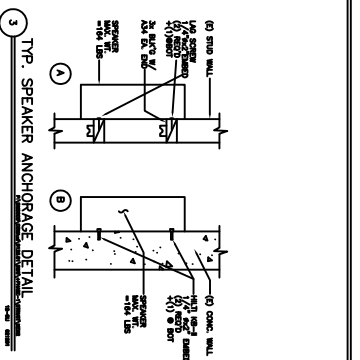
PLAN - THEATER CEILING



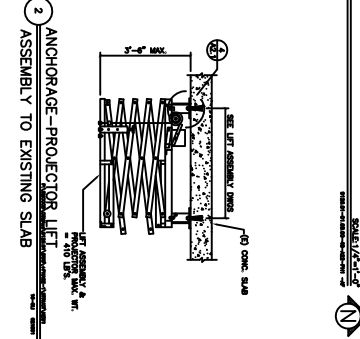
PROJECTOR MOUNT DETAIL



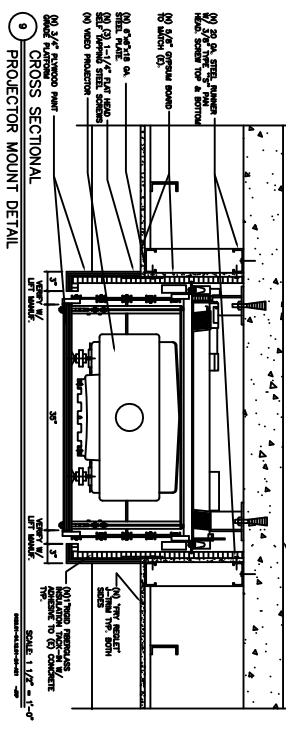
DETAIL



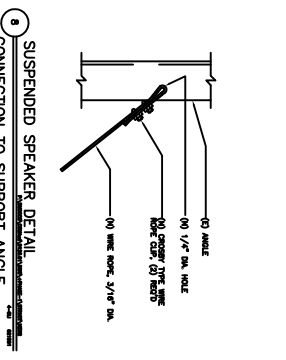
TYP. SPEAKER ANCHORAGE DETAIL



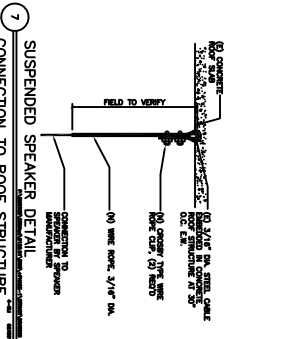
ANCHORAGE - PROJECTOR LIFT ASSEMBLY TO EXISTING SLAB



CROSS SECTIONAL PROJECTOR MOUNT DETAIL



SUSPENDED SPEAKER DETAIL CONNECTION TO SUPPORT ANGLE



SUSPENDED SPEAKER DETAIL CONNECTION TO ROOF STRUCTURE

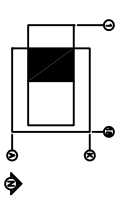
399 BRADFORD STREET
 PHOENIX, AZ 85018
 PHONE: 602.444.4433
 FAX: 602.551.2616

CLIENT
SAN MATEO COMMUNITY COLLEGE DISTRICT

PROJECT
COLLEGE OF SAN MATEO

THEATER AUDIO/VISUAL PROJECT-PHASE 1

1700 WEST HILLSDALE BOULEVARD
 SAN MATEO, CA 94402



SHEET NAME
PLAN: GROUND LEVEL CEILING

DATES
 02-21-02
 02-21-02

CONTACT
 PAB

JOB NUMBER
 0129.01

SHEET No.:
AS1-02/A2.1