

PLUMBING EQUIPMENT SCHEDULE		
SYMBOL	DESCRIPTION	MANUFACTURER & MODEL NUMBERS
SA-1	SHOCK ABSORBER	PRECISION PLUMBING PRODUCTS PART NUMBER SC-, SIZE PER PDI PROVIDE ACCESS PANEL
TP-1	TRAP PRIMER	PRECISION PLUMBING PRODUCTS PRIME-RITE PART NUMBER PR-500 PROVIDE ACCESS PANEL
FD-1	FLOOR DRAIN	ZURN ZN-415B-P. PROVIDE TRAP PRIMER.
FCO	FLOOR CLEANOUT	ZURN Z-1400
WCO	WALL CLEANOUT	ZURN ZS-1468
HB-1	HOSE BIB	ARROWHEAD BRASS 255FPSAT, VANDAL PROOF LESS HANDLE.

PLUMBING ROUGH IN-SCHEDULE						
SYMBOL	FIXTURE	ROUGH IN SIZE IN INCHES				REMARKS
		W	V	HW	CW	
WC-1	WATER CLOSET WALL HUNG FLUSH VALVE (FV) H/C	4	2	-	1 1/2	KOHLER "KINGSTON" K-4330, ADA COMPLIANT, 1.6 GPF SLOAN FLUSH VALVE WES 111, DUAL FLUSH, 1.1GPF/1.6GPF 17" AFF MOUNTING SEAT HEIGHT, BEMIS 1655C SEAT
WC-2	WATER CLOSET WALL HUNG FLUSH VALVE (FV)	4	2	-	1 1/2	KOHLER "KINGSTON" K-4330, ADA COMPLIANT, 1.6 GPF SLOAN FLUSH VALVE WES 111, DUAL FLUSH, 1.1GPF/1.6GPF BEMIS 1655C SEAT
UR-1	URINAL	2	2	-	1	KOHLER, K-4960-ET, 0.5 TO 1.0 GPF, URINAL, SLOAN ROYAL MODEL 186-1.0, 1.0 GPF, MANUAL FLUSH VALVE, HEIGHT TO CONFORM TO THE ADA REQUIREMENT
UR-2	URINAL	2	2	-	1	KOHLER, K-4960-ET, 0.5 TO 1.0 GPF, URINAL, SLOAN ROYAL MODEL 186-1.0, 1.0 GPF, MANUAL FLUSH VALVE
L-1	LAVATORY WALL HUNG MTD H/C	1 1/2	1 1/2	-	1/2	KOHLER "KINGSTON" K-2007, WALL HUNG, ADA COMPLIANT CHICAGO, 333-336PSPHVPACP, METERING FAUCET, 2.2 GPM
L-2	LAVATORY WALL HUNG	1 1/2	1 1/2	-	1/2	KOHLER "KINGSTON" K-2006, WALL HUNG, ADA COMPLIANT CHICAGO, 333-336PSPHVPACP, METERING FAUCET, 2.2 GPM

NOTES:

PROVIDE ALL MISCELLANEOUS APPURTENANCES AS REQUIRED FOR INSTALLATION OF A COMPLETE SYSTEM;
INCLUDING BUT NOT LIMITED TO: CARRIERS, BACKING PLATES, STOPS, TRAPS, ETC....

INSTALL ADA FIXTURES PER THE ADA STANDARDS / T-24 STANDARDS

PROVIDE TRUEBRO LAV-GUARD OR EQUAL PRE-FABRICATED INSULATION ON EXPOSED HOT WATER AND WASTE PIPING
TO THE ADA LAVATORY.

ALL PLUMBING FIXTURES TO CONFORM TO THE CALIFORNIA T-24 WATER CONSERVATION REQUIREMENTS

LEGEND AND ABBREVIATIONS		
SYMBOL	ABBR	DESCRIPTION
— — — — —	CW	DOMESTIC COLD WATER PIPE
— — — — —	HW	DOMESTIC HOT WATER PIPE
— — — — —	HWR	DOMESTIC HOT WATER RETURN PIPE
— — — — — SS/W	SS/W	SANITARY SEWER/WASTE PIPE ABOVE FLOOR
— — — — —	SS/W	SANITARY SEWER/WASTE BELOW FLOOR
— — — — — SD	SD	STORM DRAIN ABOVE FLOOR
— — — — —	SD	STORM DRAIN BELOW FLOOR
— — — — — CD	CD	CONDENSATE DRAIN
— — — — —	V	VENT PIPE
— — — — —		PIPING TO BE REMOVED/DEMO
— — — — —		PIPE UP
— — — — —		PIPE DOWN
— — — — —	BV	BALL VALVE
— — — — —	FD	FLOOR DRAIN
— — — — —	FCO	FLOOR CLEANOUT
— — — — —		PIPING TO BE CAPPED
— — — — —	HB	HOSE BIB
— — — — —	POC	POINT OF CONNECTION
— — — — —	ABV	ABOVE
— — — — —	(E)	EXISTING
— — — — —	FCU	FAN COIL UNIT
— — — — —	HB	HOSE BIB
— — — — —	GPF	GALLON PER FLUSH
— — — — —	GPM	GALLON PER MINUTE
— — — — —	HP	HORSEPOWER
— — — — —	(N)	NEW
— — — — —	RD	ROOF DRAIN
— — — — —	SMD	SEE MECHANICAL DRAWINGS
— — — — —	VR	VENT RISER
— — — — —	VTR	VENT THROUGH ROOF

GENERAL NOTES

- ALL WORK SHALL CONFORM TO 2007 CPC.
- SANITARY WASTE & VENT SYSTEM SHALL BE NO HUB CAST IRON PIPE & FITTINGS WITH STANDARD CSPI 301 COUPLING. DWV COPPER PIPE & FITTINGS WITH LEAD FREE SOLDER JOINTS.
- DOMESTIC HOT & COLD WATER SHALL BE TYPE L COPPER WITH WROT FITTINGS AND LEAD FREE SOLDER JOINTS. T-DRILLED BRAZED JOINTS SHALL BE USED AT CONTRACTORS OPTIONS.
- HOT WATER PIPE SHALL BE INSULATED PER TITLE 24.
- FLOOR DRAINS SHALL HAVE TRAP PRIMERS AS REQUIRED BY CODE

SCHOOL EQUIPMENT ANCHORAGE NOTE

SEISMIC ANCHORAGE OF PLUMBING EQUIPMENTS SHALL CONFORM TO THE REGULATIONS OF CBC-2007 AND ASCE 7-05, SECTIONS 13.3, 13.4 AND 13.6.

ALL PLUMBING EQUIPMENT SHALL BE BRACED OR ANCHORED TO RESIST A HORIZONTAL FORCE ACTING IN ANY DIRECTION USING THE FOLLOWING CRITERIA:

THE TOTAL DESIGN LATERAL SEISMIC FORCE SHALL BE DETERMINED FROM SECTION 1614A CALIFORNIA BUILDING CODE (CBC) 2007 AND 13.3 ASCE 7-05. FORCES SHALL BE APPLIED IN THE HORIZONTAL DIRECTIONS, WHICH RESULT IN THE MOST CRITICAL LOADING FOR DESIGN.

THE VALUE OF A_p (COMPONENT AMPLIFICATION FACTOR) AND R_p (COMPONENT RESPONSE MODIFICATION FACTOR) OF SECTION 13.3.1 ASCE 7-05 SHALL BE SELECTED FROM SECTION 13.6-1 ASCE 7-05. THE VALUE OF I_p SHALL BE SELECTED FROM SECTION 13.1.3 AND 13.6 OF ASCE 7-05.

WHERE ANCHORAGE DETAILS ARE NOT SHOWN ON THE DRAWINGS, THE FIELD INSTALLATION SHALL BE SUBJECT TO THE APPROVAL OF THE MECHANICAL ENGINEER, STRUCTURAL ENGINEER AND THE FIELD REPRESENTATIVE OF THE DIVISION OF THE STATE ARCHITECT.

LATERAL SUPPORT FOR DUCTS/PIPING SHALL COMPLY WITH THE LATEST EDITION OF SMACNA "GUIDELINES FOR SEISMIC RESTRAINTS OF MECHANICAL SYSTEMS AND PLUMBING SYSTEM".

DRAWING LIST – BUILDING 12

P1.12	PLUMBING SCHEDULES, LEGEND AND NOTES
P2.10	FIRST FLOOR PLUMBING DEMOLITION PLAN
P2.11	FIRST FLOOR PLUMBING PLAN

ARCHITECT OF RECORD

noll tam
architects and planners

729 Hixson Avenue
Berkeley, CA 94710
510.848.8295
fax 510.848.3006

KRUSE Plumbing
Heating
Cooling
A century of service

P.O. Box 2800, Berkeley, CA 94702
520 Pardee Street, Berkeley, CA 94710
Phone (510) 844-0290 Fax (510) 848-9909

PROFESSIONAL DESIGN CONSULTANTS, INC.

PDC
MECHANICAL PLUMBING ENGINEERS

8017 MURCHIO DRIVE
CONCORD, CA 94521
(925) 688-1883
(925) 825-8088 FAX

IDENTIFICATION STAMP
DIVISION OF THE STATE ARCHITECT

APPLICATION NUMBER: 110537

AC _____ PD _____ SE _____

DATE _____

DSA SUBMITTAL

COLLEGE OF SAN MATEO
BUILDING 12 AND 17
MODERNIZATION

SMCCCD
3401 CSM Drive
San Mateo, CA 94402
College of San Mateo
1700 W. Hillside Blvd.
San Mateo, CA 94402

SHEET TITLE
**BUILDING 12
PLUMBING SCHEDULES,
LEGEND AND NOTES**

REVISIONS

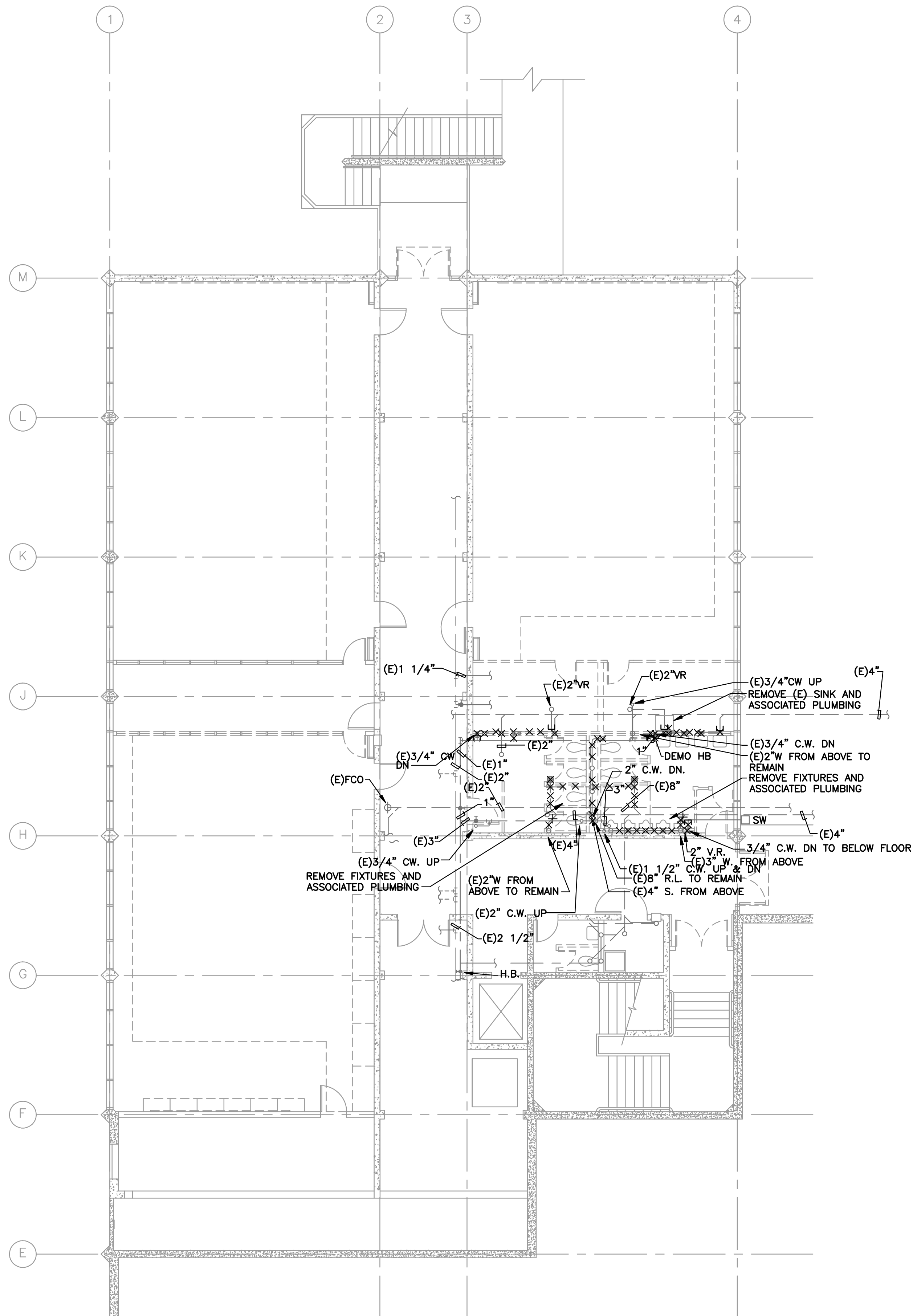
NO.	DATE	DESCRIPTION

DATE	AUGUST 27, 2009
DRAWN	RS
CHECKED	CM
SCALE	NONE
N&T JOB NO.:	2901

SHEET NUMBER

P1.12

AS BUILT - 10/21/10



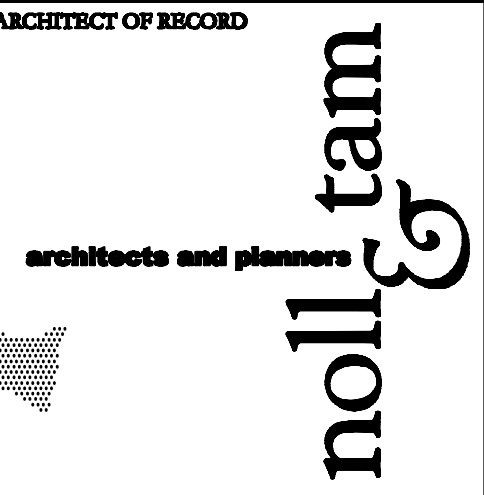
1
P2.10 **FIRST FLOOR PLUMBING DEMOLITION PLAN - BUILDING 12**

1/8"=1'-0"

GENERAL NOTES

1. REFER TO ARCHITECTURAL DRAWINGS FOR ALL DEMOLITION NOTES.
2. CAPPED ALL EXISTING PLUMBING PIPING CONNECTED TO THE REMOVED EXISTING PLUMBING FIXTURES AT THE CEILING OR THE FLOOR BELOW FOR FUTURE USE.
3. CONTRACTOR TO LOCATE (E) PIPING TO THE LABORATORY ROOMS THAT WILL REMAIN, SUCH AS COMPRESSED AIR, NATURAL GAS, DISTILLED WATER, VACUUM, ETC.

ARCHITECT OF RECORD



729 Holsz Avenue
Berkeley, CA 94710
510.848.8295
fax 510.848.3006



P.O. Box 2800, Berkeley, CA 94702
520 Paradise Street, Berkeley, CA 94710
Phone (510) 844-0220 Fax (510) 848-9009



MECHANICAL PLUMBING ENGINEERS

IDENTIFICATION STAMP
DIVISION OF THE STATE ARCHITECT

APPLICATION NUMBER: 110537
DATE: _____

DSA SUBMITTAL

COLLEGE OF SAN MATEO
BUILDING 12 AND 17
MODERNIZATION

SMCCCD
3401 CSM Drive
San Mateo, CA 94402
College of San Mateo
1700 W. Hillside Blvd.
San Mateo, CA 94402

SHEET TITLE
BUILDING 12
FIRST FLOOR PLUMBING
DEMOLITION PLAN

REVISIONS		
NO.	DATE	DESCRIPTION

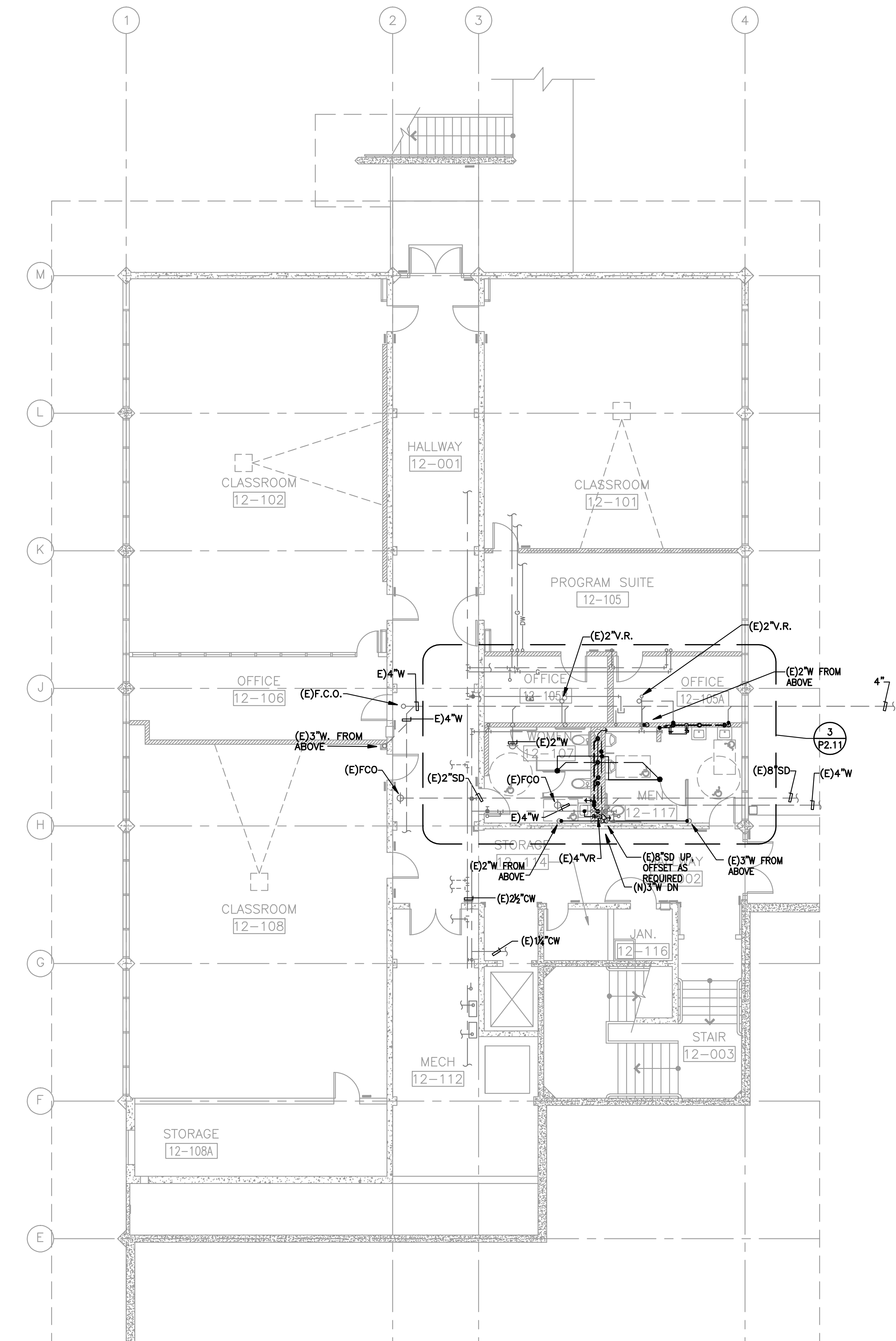
DATE: **AUGUST 27, 2009**
DRAWN: **RS**
CHECKED: **CM**
SCALE: **1/8" = 1'-0"**
N&T JOB NO.: **2901**

SHEET NUMBER

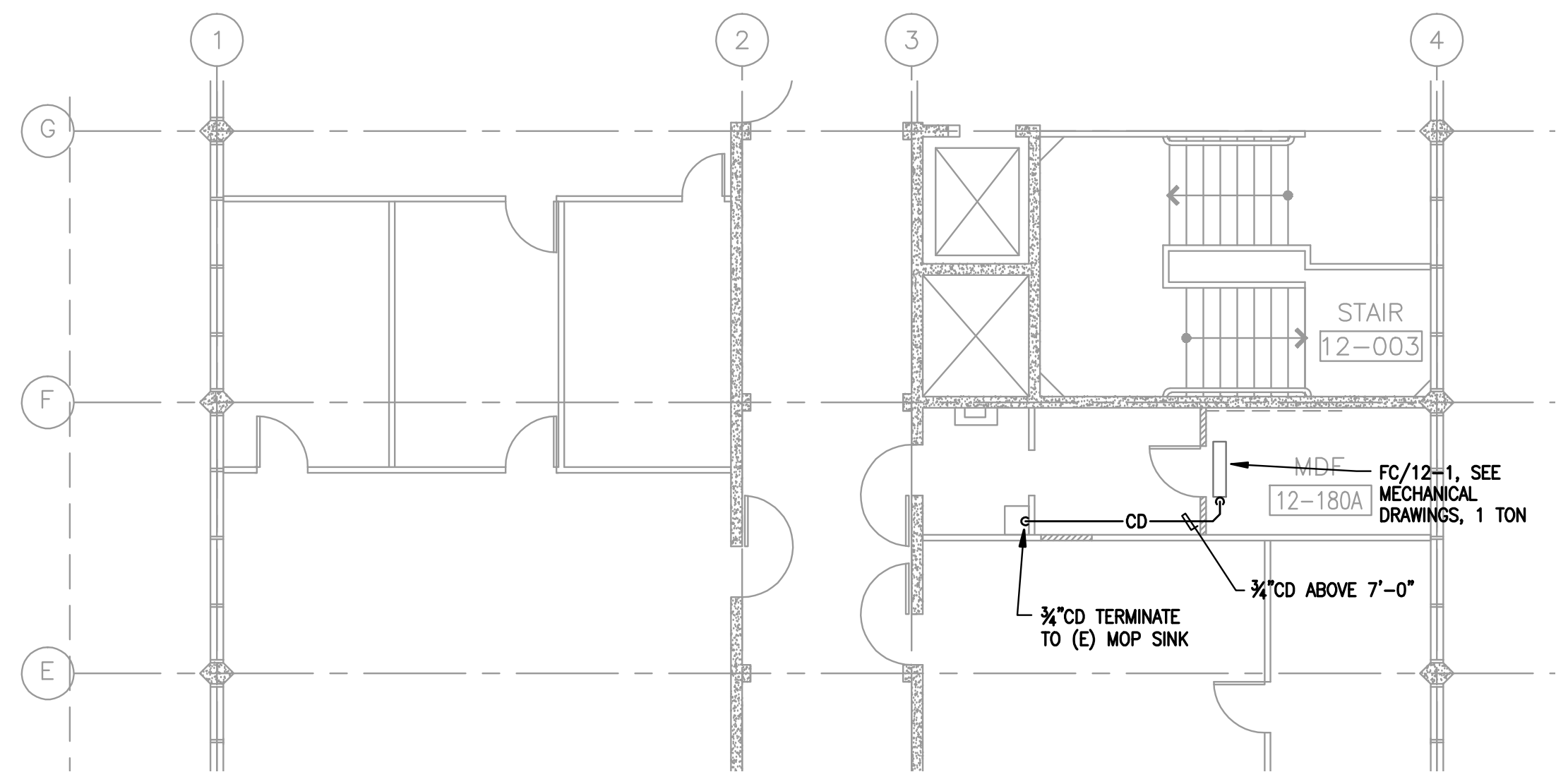
P2.10

AS BUILT - 10/21/10

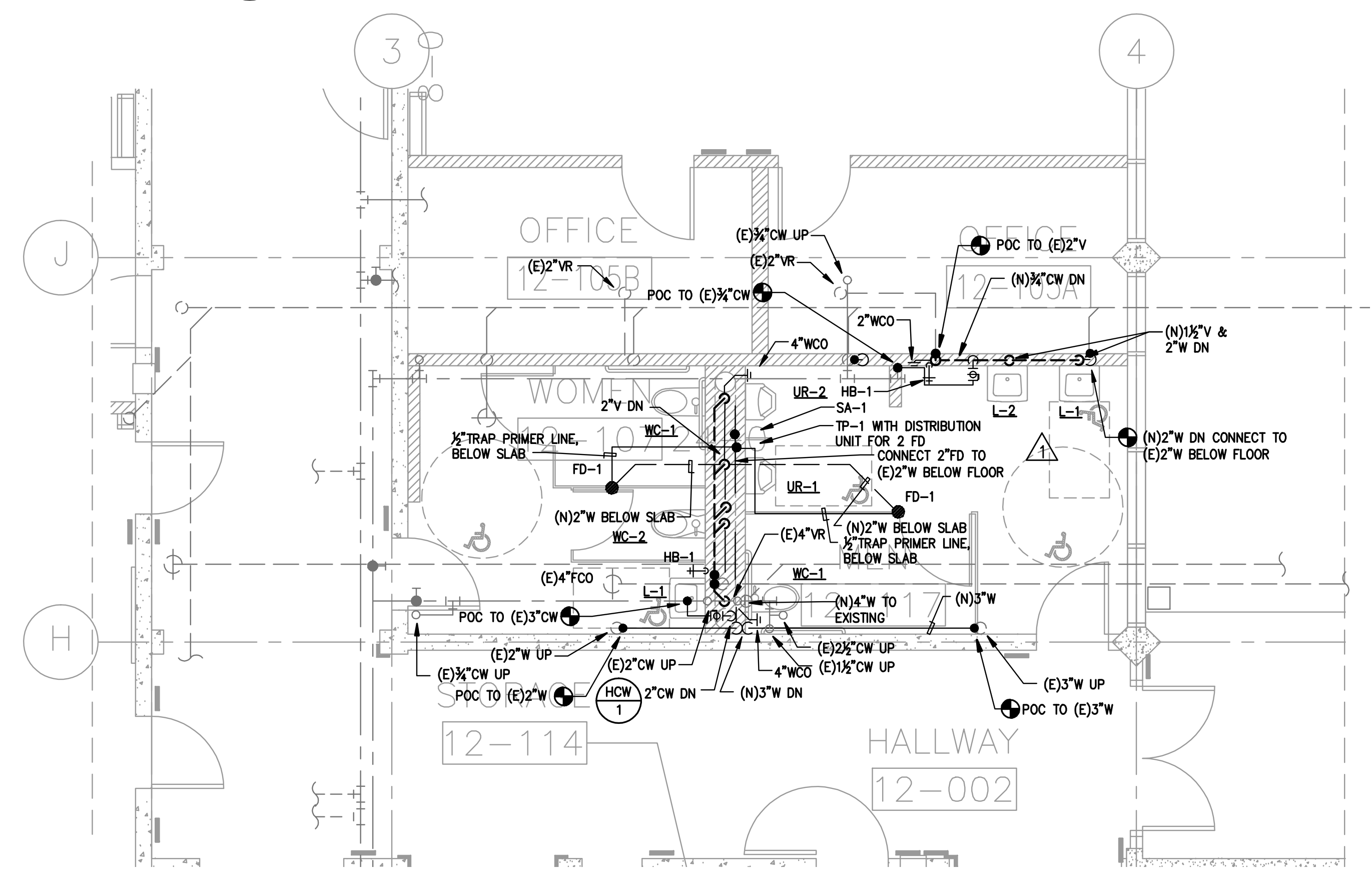




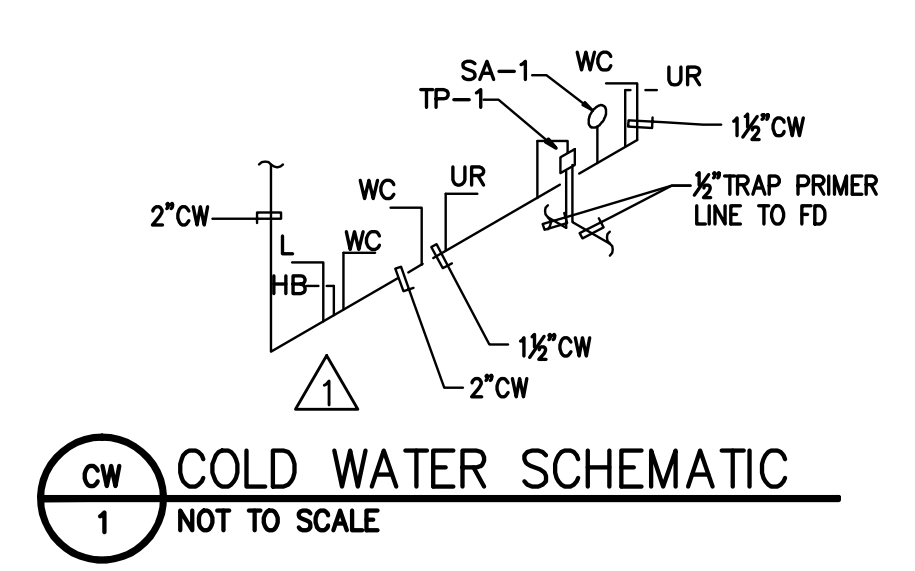
1 PLUMBING FIRST FLOOR PLAN - BUILDING 12
 P2.11 1/8"=1'-0"



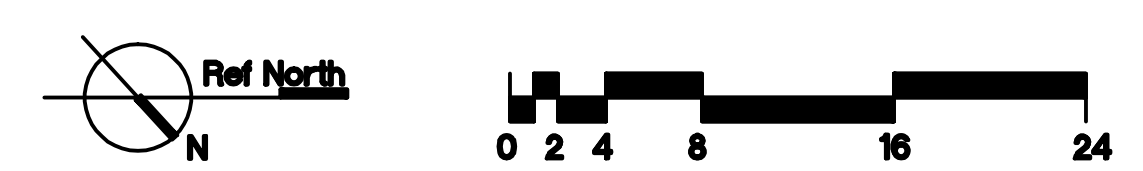
2 PLUMBING SECOND FLOOR PARTIAL PLAN
 P2.11 1/8"=1'-0"



3 ENLARGED RESTROOMS PLUMBING PLAN
 P2.11 1/4"=1'-0"



CW COLD WATER SCHEMATIC
 1 NOT TO SCALE



ARCHITECT OF RECORD
noll tam
 architects and planners
 729 Hixson Avenue
 Berkeley, CA 94710
 510.848.8295
 fax 510.848.3006

KRUSE Plumbing
 Heating
 Cooling
 A century of service
 P.O. Box 2800, Berkeley, CA 94702
 920 Paradise Street, Berkeley, CA 94710
 Phone (510) 844-0220 Fax (510) 848-9009

PDC PROFESSIONAL DESIGN
 CONSULTANTS, INC.
 MECHANICAL
 PLUMBING
 ENGINEERS
 8017 MURCHIO DRIVE
 CONCORD, CA 94521
 (925) 688-1883
 (925) 825-8088 FAX

IDENTIFICATION STAMP
 DIVISION OF THE STATE ARCHITECT
 APPLICATION NUMBER: 110537
 AC: _____
 DATE: _____

DSA SUBMITTAL
COLLEGE OF SAN MATEO
 BUILDING 12 AND 17
 MODERNIZATION
 SMCCCD
 3401 CSM Drive
 San Mateo, CA 94402
 College of San Mateo
 1700 W. Hillside Blvd.
 San Mateo, CA 94402

SHEET TITLE
**BUILDING 12
 PLUMBING PLAN**

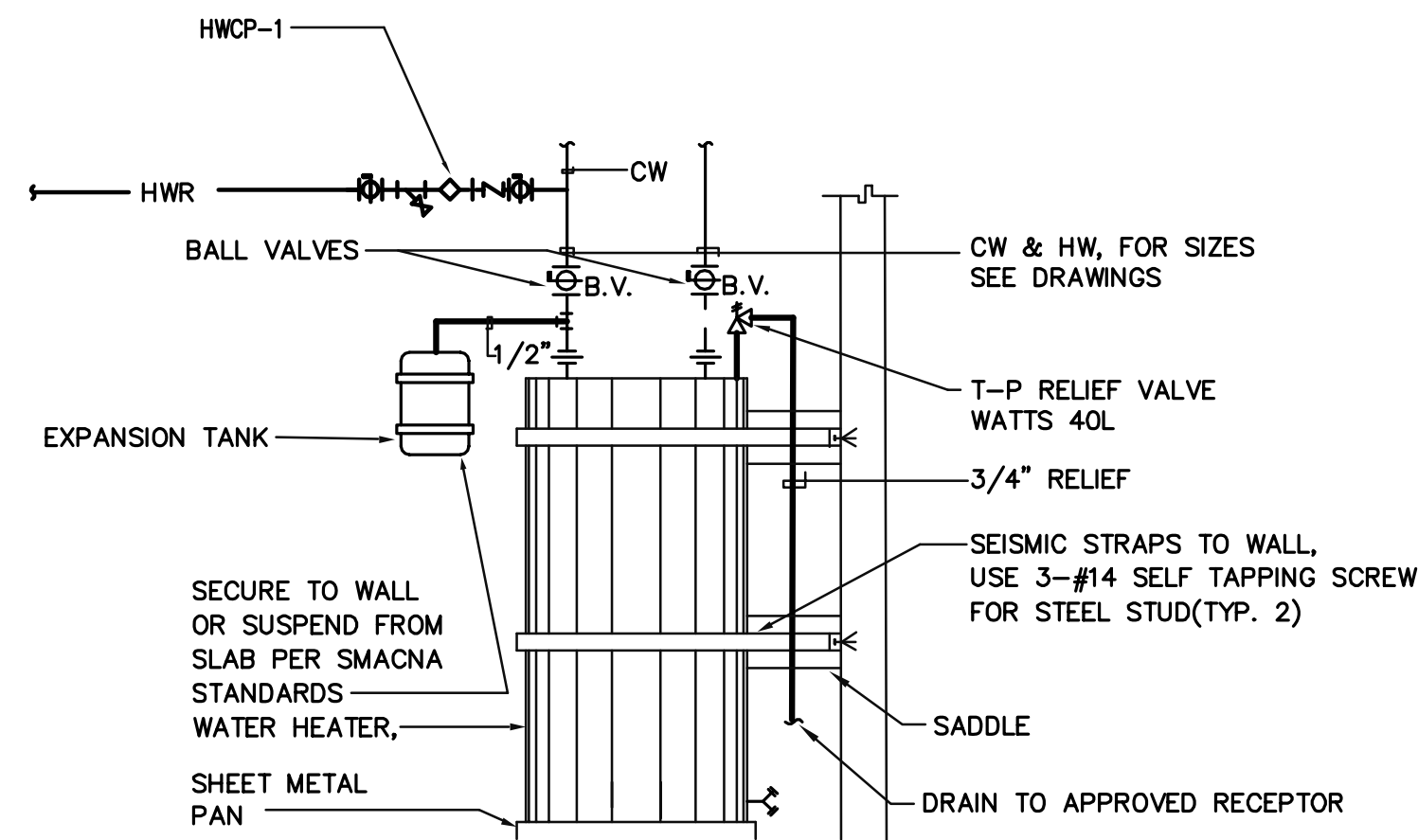
REVISIONS

NO.	DATE	DESCRIPTION
1	08.12.10	Revised 7

DATE: AUGUST 27, 2009
 DRAWN: RS
 CHECKED: CM
 SCALE: AS NOTED
 N&T JOB NO.: 2901

SHEET NUMBER
**P2.11
 RD-7.4**

AS BUILT - 10/21/10



WATER HEATER DETAIL

SCALE: NONE

1
P1.11

PLUMBING EQUIPMENT SCHEDULE		
SYMBOL	DESCRIPTION	MANUFACTURER & MODEL NUMBERS
SA-1	SHOCK ABSORBER	PRECISION PLUMBING PRODUCTS PART NUMBER SC-, SIZE PER PDI PROVIDE ACCESS PANEL
TP-1	TRAP PRIMER	PRECISION PLUMBING PRODUCTS PRIME-RITE PART NUMBER PR-500 PROVIDE ACCESS PANEL
FD-1	FLOOR DRAIN	ZURN ZN-415B-P. PROVIDE TRAP PRIMER.
FCO	FLOOR CLEANOUT	ZURN Z-1400
WCO	WALL CLEANOUT	ZURN ZS-1468
HB-1	HOSE BIB	ARROWHEAD BRASS 255FPSAT, VANDAL PROOF LESS HANDLE.
WH-1	WATER HEATER	STATE WATER HEATER, ELECTRIC, MODEL PCE 20 10MSA, 4KW/4KW UPPER/LOWER WATTAGE, 208V, 1PHASE, 20AMP CIRCUIT
ET-1	EXPANSION TANK	WATTS DET-5 2 GAL TANK, PROVIDE NORMALLY OPEN VALVE WITH LOCK WEIGHT WITH WATER: 25 LBS
HWCP-1	HOT WATER CIRCULATING PUMP	GRUNDFOS UP15-10B5 WITH HONEYWELL CONTROLLER MODEL #675A 1508 1 58 WATTS, 115V, 1PHASE
PRV-1	PRESSURE REDUCING VALVE	WILKENS 2W 109, 2" WITH BY PASS

PLUMBING ROUGH IN-SCHEDULE						
SYMBOL	FIXTURE	ROUGH IN SIZE IN INCHES				REMARKS
		W	V	HW	CW	
WC-1 ACCESSIBLE	WATER CLOSET WALL HUNG FLUSH VALVE (FV) H/C	4	2	-	1 1/2	KOHLER "KINGSTON" K-4330, ADA COMPLIANT, 1.6 GPF SLOAN FLUSH VALVE WES 111, DUAL FLUSH, 1.1GPF/1.6GPF 17" AFF MOUNTING SEAT HEIGHT, BEMIS 1655C SEAT
WC-2	WATER CLOSET WALL HUNG FLUSH VALVE (FV)	4	2	-	1 1/2	KOHLER "KINGSTON" K-4330, 1.6 GPF: WITH SLOAN FLUSH VALVE WES 111, DUAL FLUSH, 1.1GPF/1.6GPF BEMIS 1655C SEAT
UR-1 ACCESSIBLE	URINAL	2	2	-	1	KOHLER, K-4960-ET, 0.5 TO 1.0 GPF, URINAL, SLOAN ROYAL MODEL 186-1.0, 1.0 GPF, MANUAL FLUSH VALVE, HEIGHT TO CONFORM TO THE ADA REQUIREMENT
L-1 ACCESSIBLE	LAVATORY WALL HUNG MTD H/C	1 1/2	1 1/2	1/2	1/2	KOHLER "KINGSTON" K-2007, WALL HUNG, ADA COMPLIANT CHICAGO, 333-336PSHVPACP, METERING FAUCET, 2.2 GPM, WITH CHICAGO 119 TEMPER VALVE; SEE NOTE 4
L-2	LAVATORY WALL HUNG	1 1/2	1 1/2	1/2	1/2	KOHLER "KINGSTON" K-2007, WALL HUNG, ADA COMPLIANT CHICAGO, 333-336PSHVPACP, METERING FAUCET, 2.2 GPM, WITH CHICAGO 119 TEMPER VALVE; SEE NOTE 4
SK-1 ACCESSIBLE	KITCHEN SINK	1 1/2	1 1/2	1/2	1/2	ELKAY ELUHAD 3118, DOUBLE BOWL, OFF CENTERED, ADA COMPLIANT, ELKAY STRAINER FAUCET: DELTA 100, SINGLE HANDLE, ADA COMPLIANT WITH IN SINK ERATOR EVOLUTIONS SERIES, 3/4 HP, GARBAGE DISPOSER
IHW-1	INSTA HOT WATER DIPENSER	-	-	-	1/2	IN SINK ERATOR, MODEL F-HC1100, HOT AND COLD WATER DISPENSER
MS-1	MOP SINK AND FAUCET	2	1 1/2	1/2	1/2	FLORESTONE MODEL MSR 2424, MR-370 HOSE, MR-372 HANGER SPEAKMAN SERVICE SINK FAUCET SC-5811-RCP

- NOTES:
- COORDINATE LOCATION OF GARBAGE DISPOSER AND INSTA-HOT TO VERIFY THEY DO NOT CONFLICT WITH REQUIRED KNEE CLEARANCE UNDER SINK.
 - PROVIDE ALL MISCELLANEOUS APPURTENANCES AS REQUIRED FOR INSTALLATION OF A COMPLETE SYSTEM; INCLUDING BUT NOT LIMITED TO: CARRIERS, BACKING PLATES, STOPS, TRAPS, ETC....
 - INSTALL ADA FIXTURES PER THE ADA STANDARDS / T-24 STANDARDS
 - PROVIDE TRUEBRO LAV-GUARD OR EQUAL PRE-FABRICATED INSULATION ON EXPOSED HOT WATER AND WASTE PIPING TO THE ADA LAVATORY.
 - ALL PLUMBING FIXTURES TO CONFORM TO THE CALIFORNIA T-24 WATER CONSERVATION REQUIREMENTS

LEGEND AND ABBREVIATIONS		
SYMBOL	ABBR	DESCRIPTION
---	CW	DOMESTIC COLD WATER PIPE
---	HW	DOMESTIC HOT WATER PIPE
---	HWR	DOMESTIC HOT WATER RETURN PIPE
---	SS/W	SANITARY SEWER/WASTE PIPE ABOVE FLOOR
---	SS/W	SANITARY SEWER/WASTE BELOW FLOOR
---	SD	STORM DRAIN ABOVE FLOOR
---	SD	STORM DRAIN BELOW FLOOR
---	CD	CONDENSATE DRAIN
---	V	VENT PIPE
-----X-----		PIPING TO BE REMOVED/DEMO
---		PIPE UP
---		PIPE DOWN
⊕	BV	BALL VALVE
⊙	FD	FLOOR DRAIN
⊙	FCO	FLOOR CLEANOUT
---		PIPING TO BE CAPPED
⊕	HB	HOSE BIB
⊕	POC	POINT OF CONNECTION
ABV	ABV	ABOVE
(E)	(E)	EXISTING
HB	HB	HOSE BIB
FCU	FCU	FAN COIL UNIT
GPF	GPF	GALLON PER FLUSH
GPM	GPM	GALLON PER MINUTE
HP	HP	HORSEPOWER
(N)	(N)	NEW
RD	RD	ROOF DRAIN
SMD	SMD	SEE MECHANICAL DRAWINGS
VTR	VTR	VENT THROUGH ROOF

- ### GENERAL NOTES
- ALL WORK SHALL CONFORM TO 2007 CPC.
 - SANITARY WASTE & VENT SYSTEM SHALL BE NO HUB CAST IRON PIPE & FITTINGS WITH STANDARD CSPI 301 COUPLING, DWV COPPER PIPE & FITTINGS WITH LEAD FREE SOLDER JOINTS.
 - DOMESTIC HOT & COLD WATER SHALL BE TYPE L COPPER WITH WROT FITTINGS AND LEAD FREE SOLDER JOINTS. T-DRILLED BRAZED JOINTS SHALL BE USED AT CONTRACTORS OPTIONS.
 - HOT WATER PIPE SHALL BE INSULATED PER TITLE 24.
 - FLOOR DRAINS SHALL HAVE TRAP PRIMERS AS REQUIRED BY CODE

SCHOOL EQUIPMENT ANCHORAGE NOTE

SEISMIC ACHORAGE OF PLUMBING EQUIPMENTS SHALL CONFORM TO THE REGULATIONS OF CBC-2007 AND ASCE 7-05, SECTIONS 13.3, 13.4 AND 13.6.

ALL PLUMBING EQUIPMENT SHALL BE BRACED OR ANCHORED TO RESIST A HORIZONTAL FORCE ACTING IN ANY DIRECTION USING THE FOLLOWING CRITERIA:

THE TOTAL DESIGN LATERAL SEISMIC FORCE SHALL BE DETERMINED FROM SECTION 1614A CALIFORNIA BUILDING CODE (CBC) 2007 AND 13.3 ASCE 7-05. FORCES SHALL BE APPLIED IN THE HORIZONTAL DIRECTIONS, WHICH RESULT IN THE MOST CRITICAL LOADING FOR DESIGN.

THE VALUE OF A_p (COMPONENT AMPLIFICATION FACTOR) AND R_p (COMPONENT RESPONSE MODIFICATION FACTOR) OF SECTION 13.3.1 ASCE 7-05 SHALL BE SECECTED FROM SECTION 13.6-1 ASCE 7-05). THE VALUE OF I_p SHALL BE SELECTED FROM SECTION 13.1.3 AND 13.6 OF ASCE 7-05.

WHERE ANCHORAGE DETAILS ARE NOT SHOWN ON THE DRAWINGS, THE FIELD INSTALLATION SHALL BE SUBJECT TO THE APPROVAL FO THE MECHANICAL ENGINEER, STRUCTURAL ENGINEER AND THE FIELD REPRESENTATIVE OF THE DIVISION OF THE STATE ARCHITECT.

LATERAL SUPPORT FOR DUCTS/PIPING SHALL COMPLY WITH THE LATEST EDITION OF SMACNA "GUIDELINES FOR SEISMIC RESTRAINTS OF MECHANICAL SYSTEMS AND PLUMBING SYSTEM".

DRAWING LIST - BUILDING 17

P1.11	PLUMBING SCHEDULES, LEGEND AND NOTES
P2.20	PLUMBING DEMOLITION PLAN
P2.21	PLUMBING FLOOR PLAN

ARCHITECT OF RECORD

noll & tam
architects and planners

729 Heinz Avenue
Berkeley, CA 94710
510.649.8295
fax 510.649.3008

KRUSE Plumbing Heating Cooling
A century of service

P.O. Box 2900, Berkeley, CA 94702
920 Pardee Street, Berkeley, CA 94710
Phone (510) 644-0260 Fax (510) 849-9909

PDC PROFESSIONAL DESIGN CONSULTANTS, INC.
MECHANICAL PLUMBING ENGINEERS

5017 MURCHIO DRIVE
CONCORD, CA 94521
(925) 685-1963
(925) 825-8069 FAX

IDENTIFICATION STAMP
DIVISION OF THE STATE ARCHITECT

APPLICATION NUMBER 01 110537
AC _____ FS _____ SS _____
DATE _____

DSA SUBMITTAL

COLLEGE OF SAN MATEO
BUILDING 12 AND 17
MODERNIZATION

SMCCCD
3401 CSM Drive
San Mateo, CA 94402
College of San Mateo
1700 W. Hillsdale Blvd.
San Mateo, CA 94402

SHEET TITLE

**BUILDING 17
PLUMBING SCHEDULES,
LEGEND AND NOTES**

REVISIONS		
NO.	DATE	DESCRIPTION

DATE AUGUST 27, 2009
DRAWN RS
CHECKED CM
SCALE NONE
N&T JOB NO.: 2901

SHEET NUMBER

P1.11

AS BUILT - 01/04/10

GENERAL NOTES

- REFER TO ARCHITECTURAL DRAWINGS FOR ALL DEMOLITION NOTES.
- CAPPED ALL EXISTING PLUMBING PIPING CONNECTED TO THE REMOVED EXISTING PLUMBING FIXTURES AT THE CEILING OR THE FLOOR BELOW FOR FUTURE USE.

ARCHITECT OF RECORD

noll & tam
architects and planners

729 Heinz Avenue
Berkeley, CA 94710
510.649.8295
fax 510.649.3008

KRUSE Plumbing
Heating
Cooling
A century of service

P.O. Box 2900, Berkeley, CA 94702
920 Pardee Street, Berkeley, CA 94710
Phone (510) 644-0260 Fax (510) 849-9909

PDC PROFESSIONAL DESIGN
CONSULTANTS, INC.
MECHANICAL PLUMBING ENGINEERS
5017 MURCHIO DRIVE
CONCORD, CA 94521
(925) 685-1963
(925) 825-8069 FAX

IDENTIFICATION STAMP
DIVISION OF THE STATE ARCHITECT

APPLICATION NUMBER OF 110537
AC _____ FLS _____ SS _____
DATE _____

DSA SUBMITTAL

**COLLEGE OF
SAN MATEO**
BUILDING 12 AND 17
MODERNIZATION

SMCCCD
3401 CSM Drive
San Mateo, CA 94402
College of San Mateo
1700 W. Hillsdale Blvd.
San Mateo, CA 94402

SHEET TITLE
**BUILDING 17
DEMOLITION PLAN**

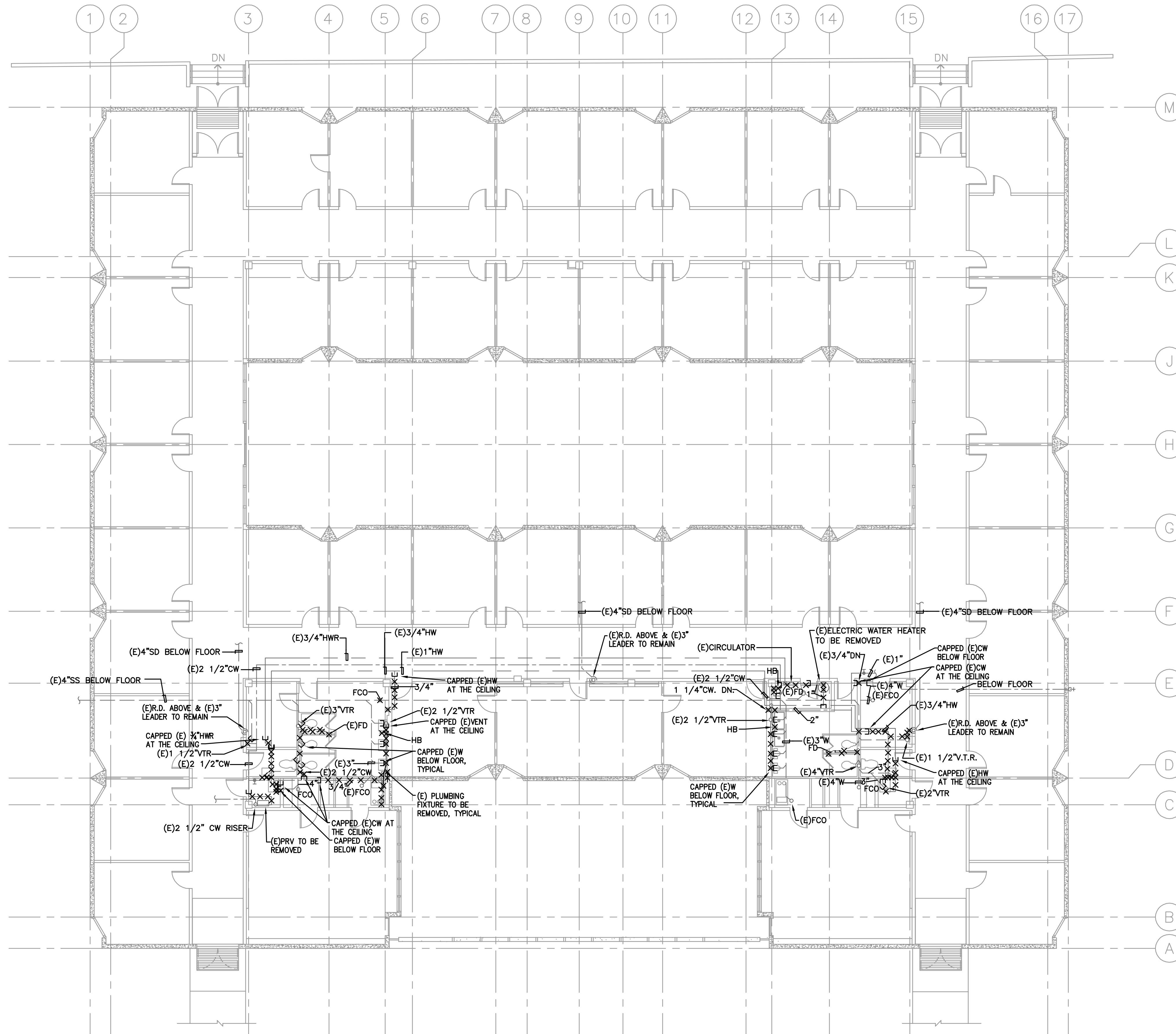
REVISIONS

NO.	DATE	DESCRIPTION

DATE AUGUST 27, 2009
DRAWN RS
CHECKED CM
SCALE 1/8" = 1'-0"
N&T JOB NO.: 2901

SHEET NUMBER

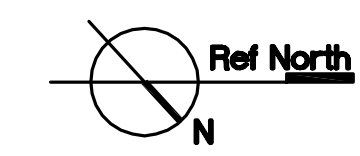
P2.20



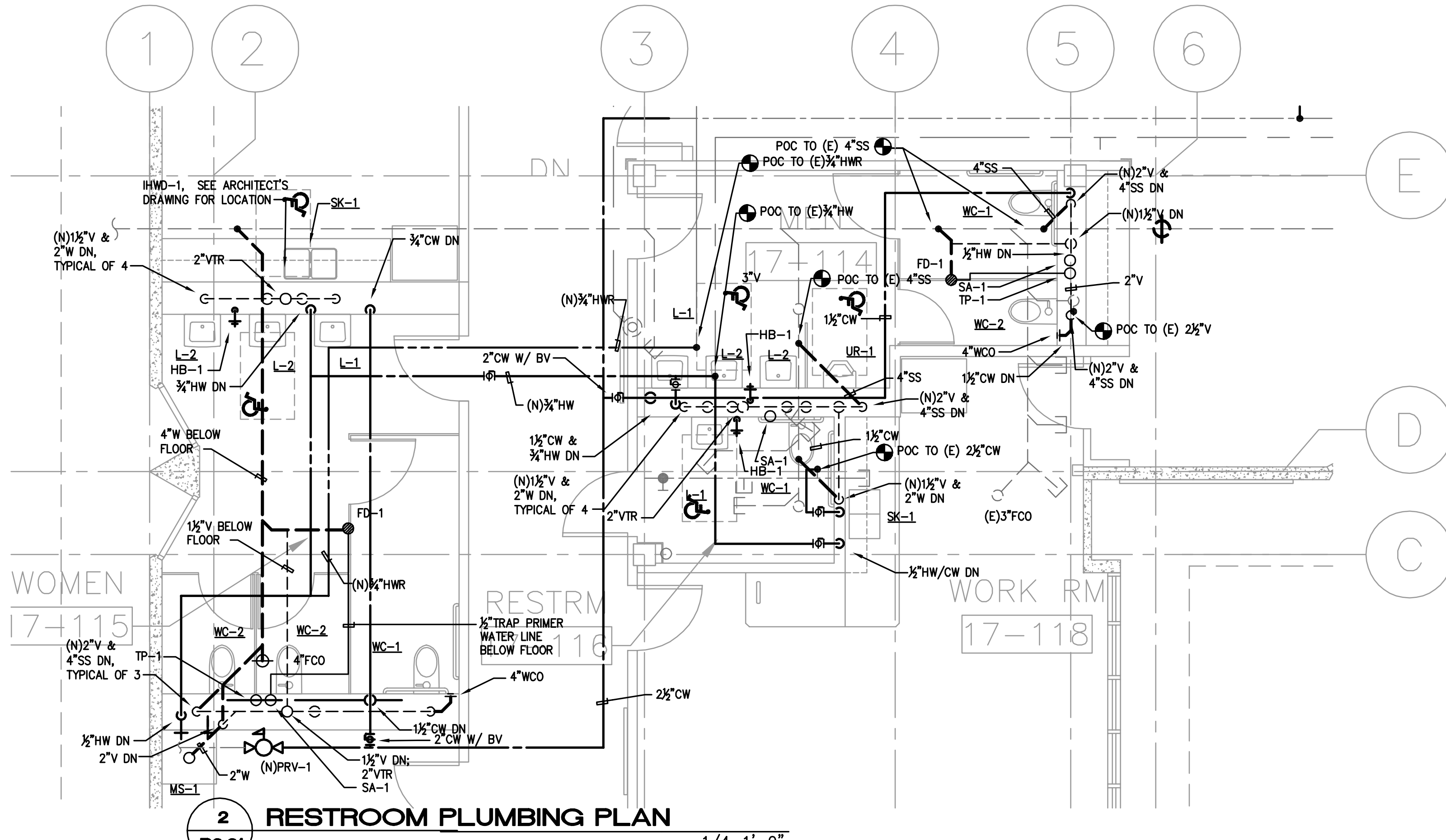
1 PLUMBING DEMOLITION PLAN - BUILDING 17

P2.20

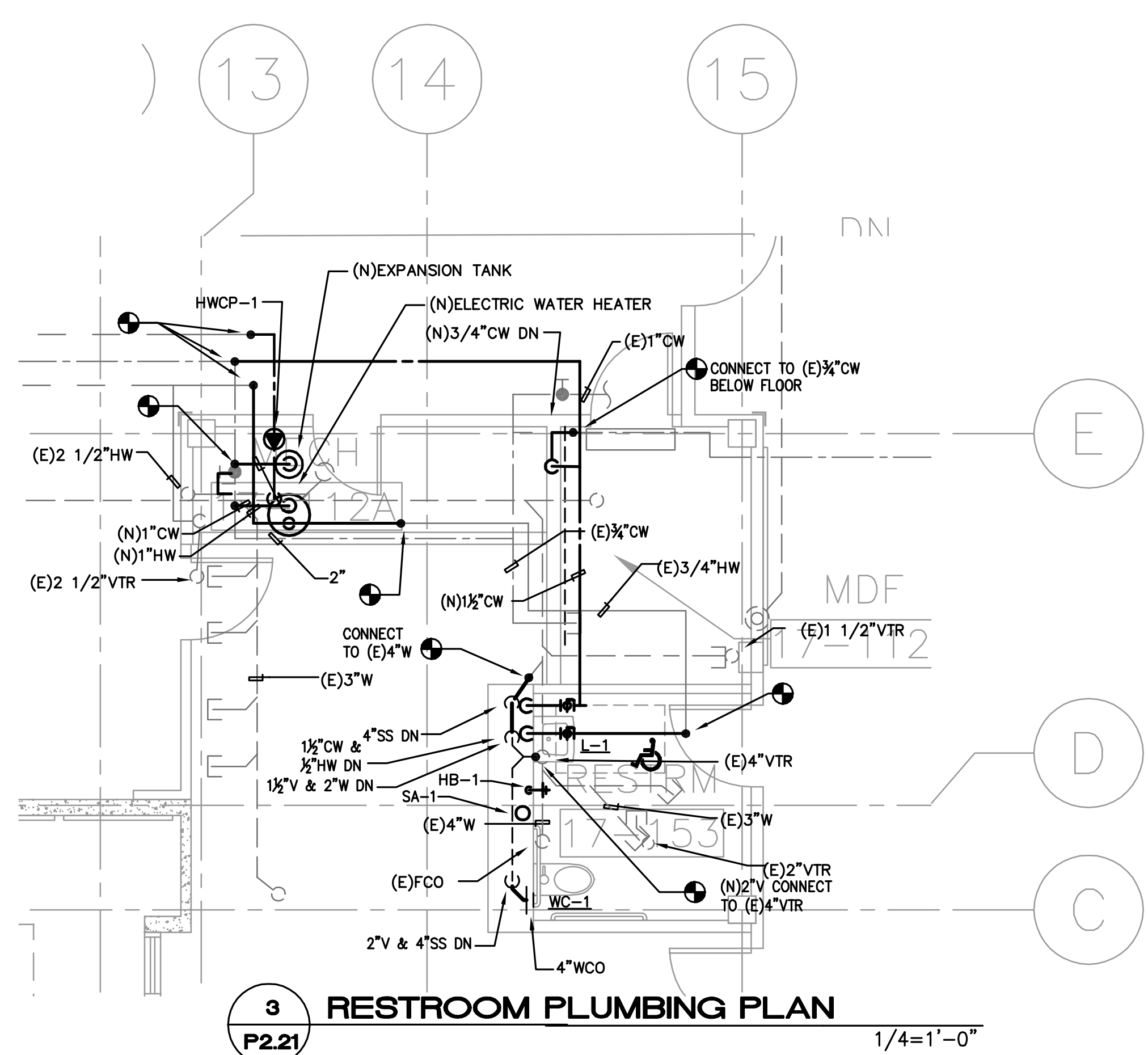
1/8"=1'-0"



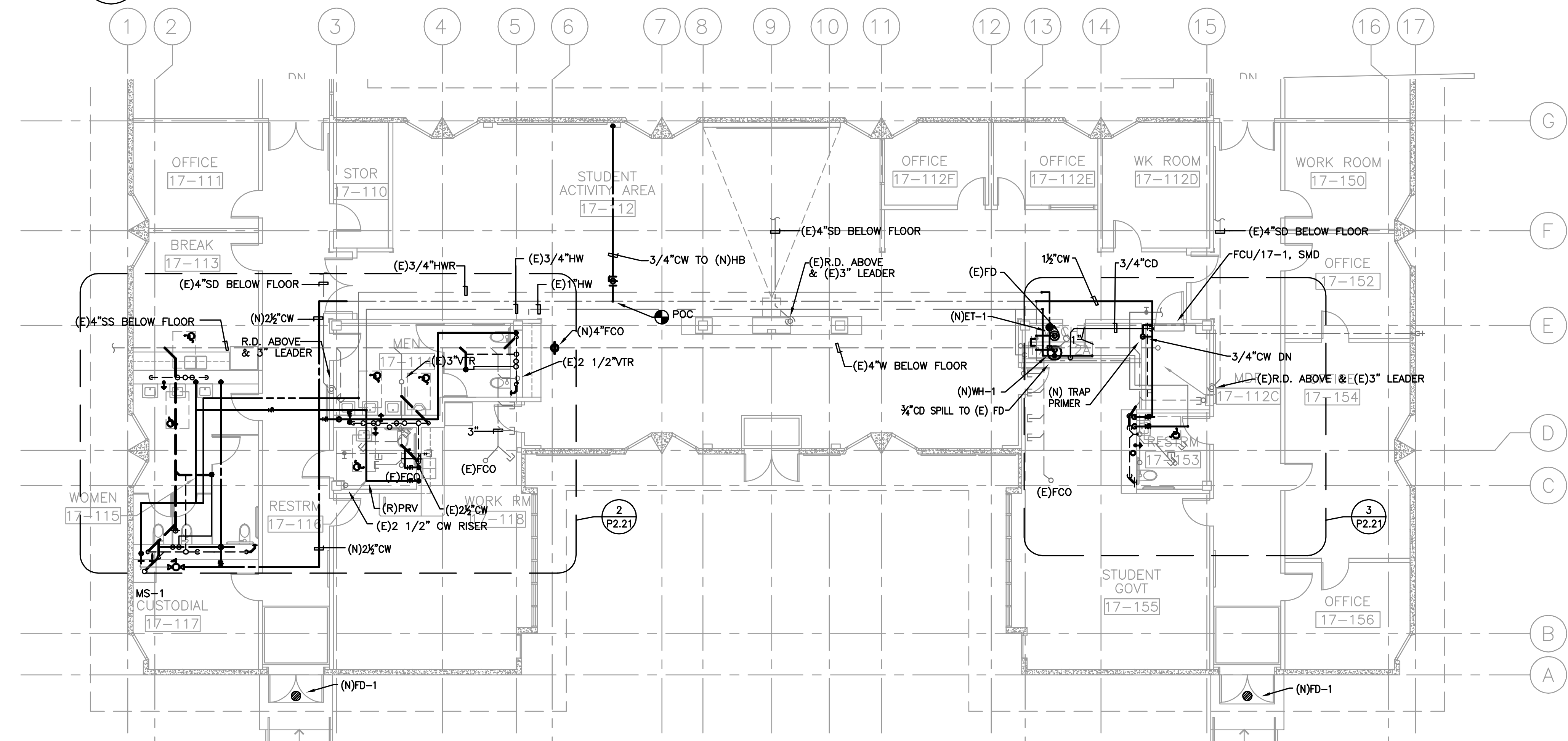
AS BUILT - 01/04/10



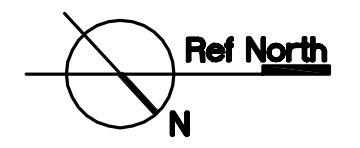
2 RESTROOM PLUMBING PLAN
 P2.21 1/4"=1'-0"



3 RESTROOM PLUMBING PLAN
 P2.21 1/4"=1'-0"



1 PLUMBING PARTIAL FLOOR PLAN - BUILDING 17
 P2.21 1/8"=1'-0"



ARCHITECT OF RECORD
noll & tam
 architects and planners
 729 Heinz Avenue
 Berkeley, CA 94710
 510.649.8295
 fax 510.649.3008

KRUSE Plumbing Heating Cooling
A century of service
 P.O. Box 2900, Berkeley, CA 94702
 920 Pardee Street, Berkeley, CA 94710
 Phone (510) 644-0260 Fax (510) 849-9909

PDC PROFESSIONAL DESIGN CONSULTANTS, INC.
 MECHANICAL PLUMBING ENGINEERS
 5017 MURCHIO DRIVE
 CONCORD, CA 94521
 (925) 685-1963
 (925) 825-8069 FAX

IDENTIFICATION STAMP
 DIVISION OF THE STATE ARCHITECT
 APPLICATION NUMBER 110537
 AC _____ FLS _____ SS _____
 DATE _____

DSA SUBMITTAL
COLLEGE OF SAN MATEO
 BUILDING 12 AND 17
 MODERNIZATION
 SMCCCD
 3401 CSM Drive
 San Mateo, CA 94402
 College of San Mateo
 1700 W. Hillsdale Blvd.
 San Mateo, CA 94402

SHEET TITLE
**BUILDING 17
 PLUMBING PLAN**

REVISIONS		
NO.	DATE	DESCRIPTION

DATE AUGUST 27, 2009
 DRAWN RS
 CHECKED CM
 SCALE AS NOTED
 N&T JOB NO.: 2901

SHEET NUMBER
P2.21

AS BUILT -01/04/10