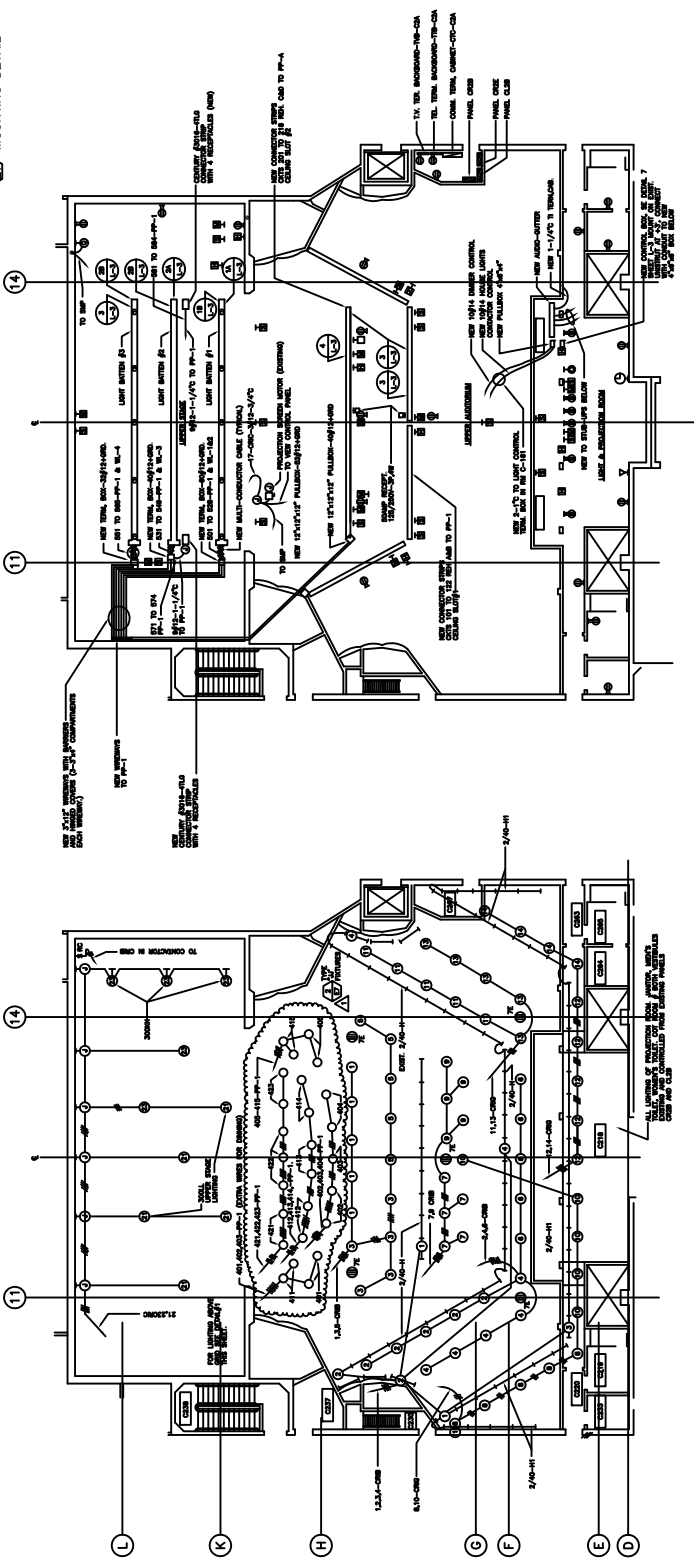
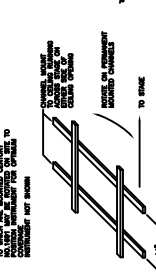
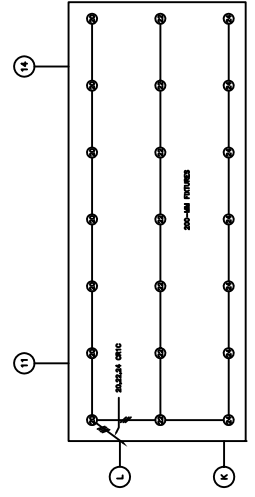


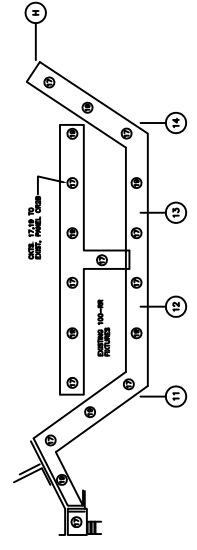
NOTES:
 1. ALL WORK SHALL BE IN ACCORDANCE WITH THE CITY OF SAN FRANCISCO
 ELECTRICAL CODE AND THE CALIFORNIA ELECTRICAL CODE.
 2. ALL WORK SHALL BE IN ACCORDANCE WITH THE CITY OF SAN FRANCISCO
 MECHANICAL AND PLUMBING CODES.



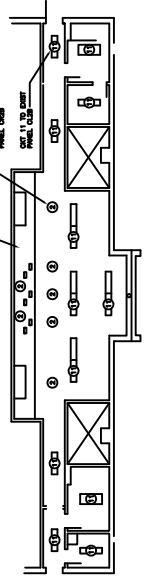
SECOND FLOOR PLAN-LIGHTING MISCELLANEOUS BUILDING "C" SCALE 1/8"=1'-0"



STAGE LIGHTING ABOVE GRID SCALE 1/8"=1'-0"



EXISTING PLAN OF CATWALK SCALE 1/8"=1'-0"



EXISTING SECOND FLOOR PLAN LIGHT & PROJECTION ROOM-LIGHTING SCALE 1/8"=1'-0"