

"These drawings and specifications have been prepared by CMT for their exclusive use in accord with Sec. 67337.4 of the Professional Engineers Act of the State of California."

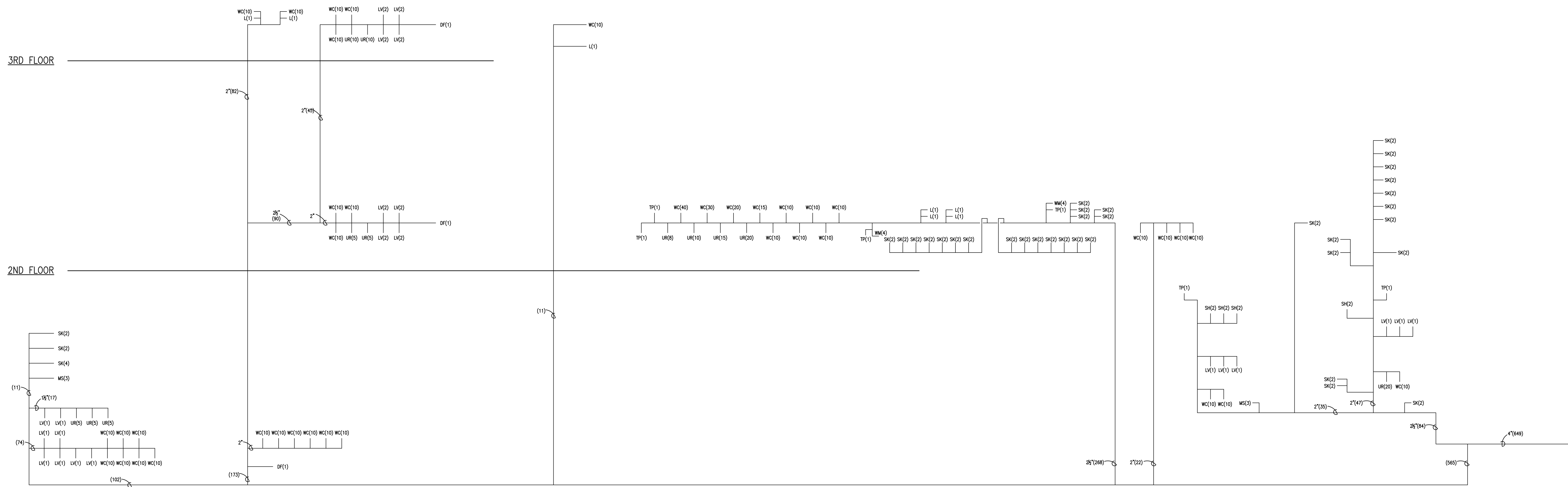
NO.	ISSUES/REVISIONS	DATE
	100% SCHEMATIC DESIGN	04/28/08
	50 % DESIGN DEVELOPMENT	06/13/08
	100% DESIGN DEVELOPMENT	07/28/08
	INCREMENT 2 80% REVIEW	10/10/08
	DSA INCREMENT 2	
	STRUCTURE & GFRC PANELS	11/11/08
7	DSA INCREMENT #3 50% REVIEW	11/11/08
9	DSA INCREMENT #3 80% REVIEW	12/16/08
10	DSA INCREMENT #3	02/09/09
	TENANT IMPROVEMENT AND ROOFING SYSTEM	
12	HPOC REVIEW	04/30/09
14	DSA INCREMENT #3 BACKCHECK	05/13/09
	ISSUED FOR CONSTRUCTION	10/27/09
	AS-BUILT DRAWINGS	04/06/11

ROOF

3RD FLOOR

2ND FLOOR

1ST FLOOR



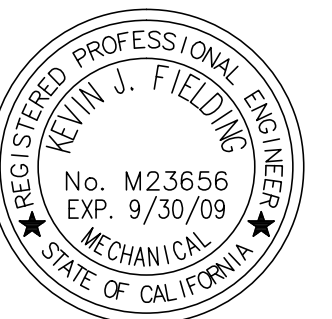
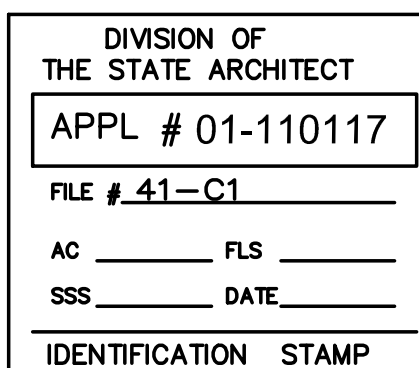
2 PLUMBING COLD WATER RISER DIAGRAM
Scale:

DOMESTIC WATER CALCULATIONS
APPENDIX A, 2007 UPC
HUNTERS CURVE METHOD
Building Supply/Branch Sizer Report

General Project Information
 Water pressure at street: 75 psi
 Pressure loss at meter: 5 psi
 Percent of length for fittings: 20 %
 Total length used for calculations: 1000 ft
 Elevation of highest outlet: 55 ft
 Minimum pressure at highest outlet: 35 psi
 Maximum Pressure Drop:(psi/100ft.): 2
 Maximum Velocity:(ft./s) 6

Supply Line Size
 Total fixture units serviced: 675 SFU
 Calculated Flow Rate: 167 gpm
 Actual Line Size: 4 in.
 Calculated Velocity: 6.089 ft/s
 Calculated Pressure Drop per 100ft: 0.946 psi

Service Fixture Units
 Calculated Pressure Drop per 100 ft: 0.946 psi



SKYLINE COLLEGE
SAN MATEO COUNTY
COMMUNITY COLLEGE
DISTRICT
CIP2 DESIGN-BUILD
PROJECT
BUILDING 4
INCREMENT 3

KEY PLAN
 CMT PROJECT NO: 28212 DRAWN BY:
 DATE: 1-29-09 CHECKED BY:
 SCALE: 0' 4' 8' 12' 16' 24' 32'
 SHEET TITLE:

DOMESTIC
WATER
PIPING
SCHEMATICS

SHEET NO: P-302