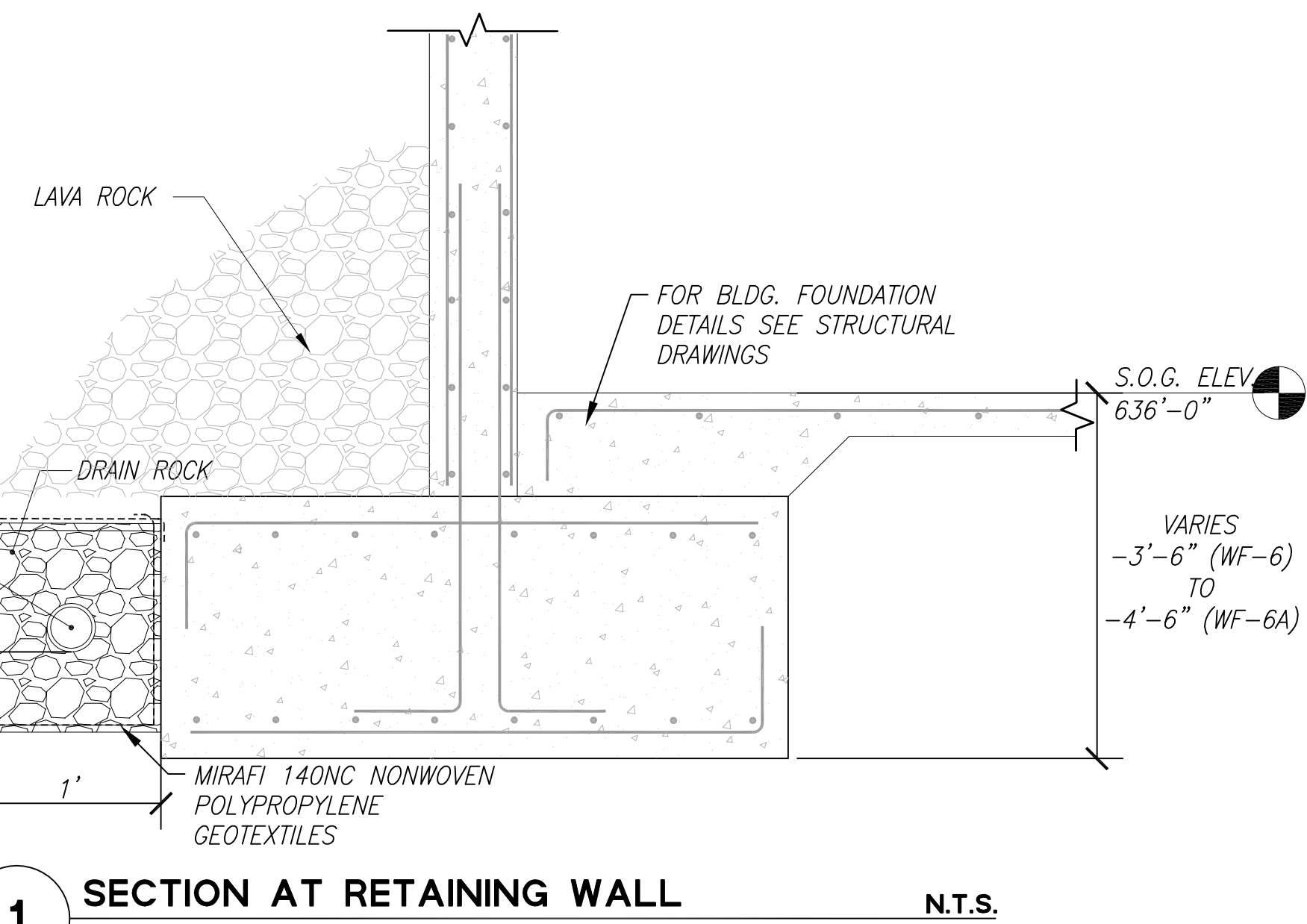
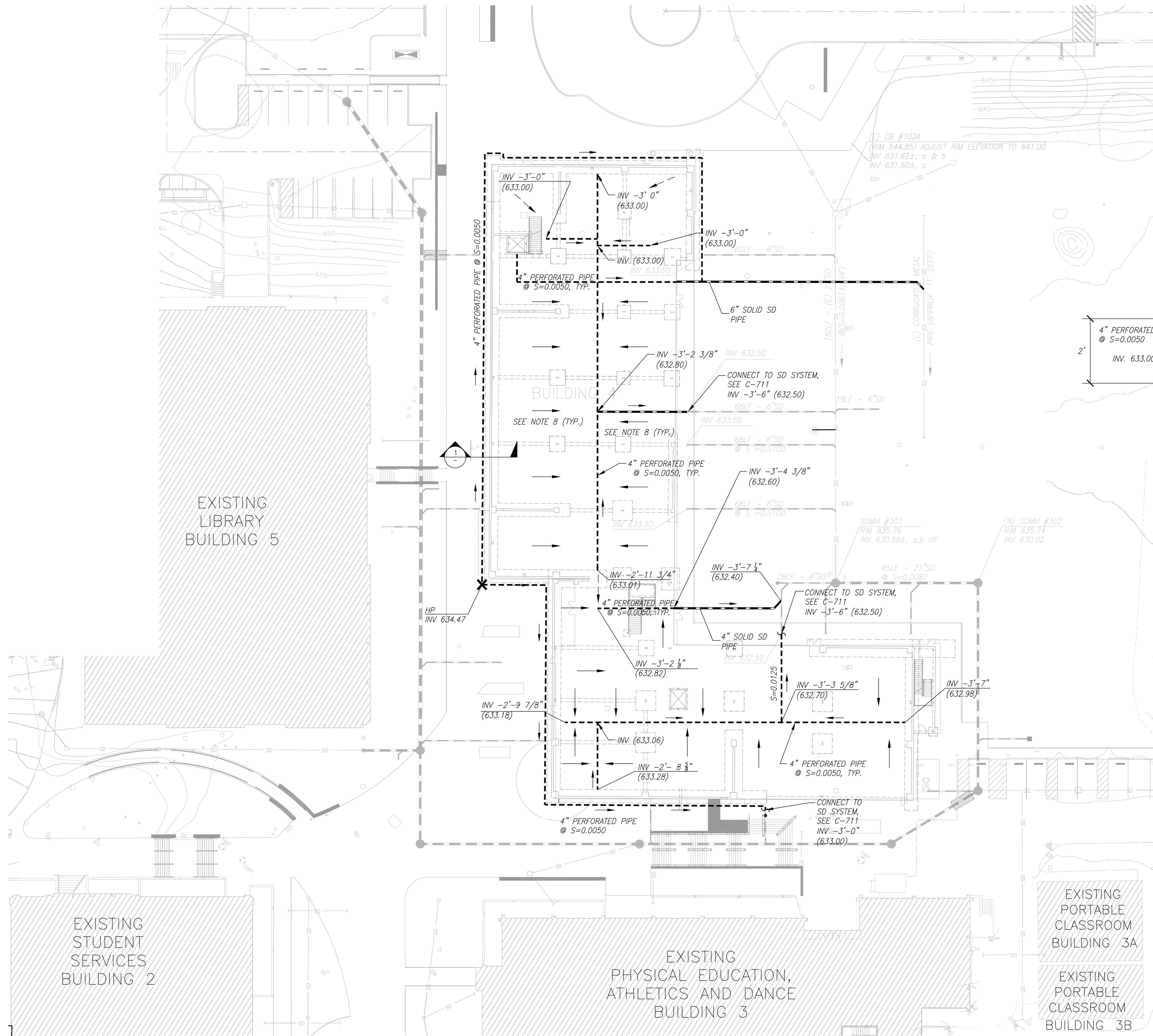


STORM DRAINAGE NOTES

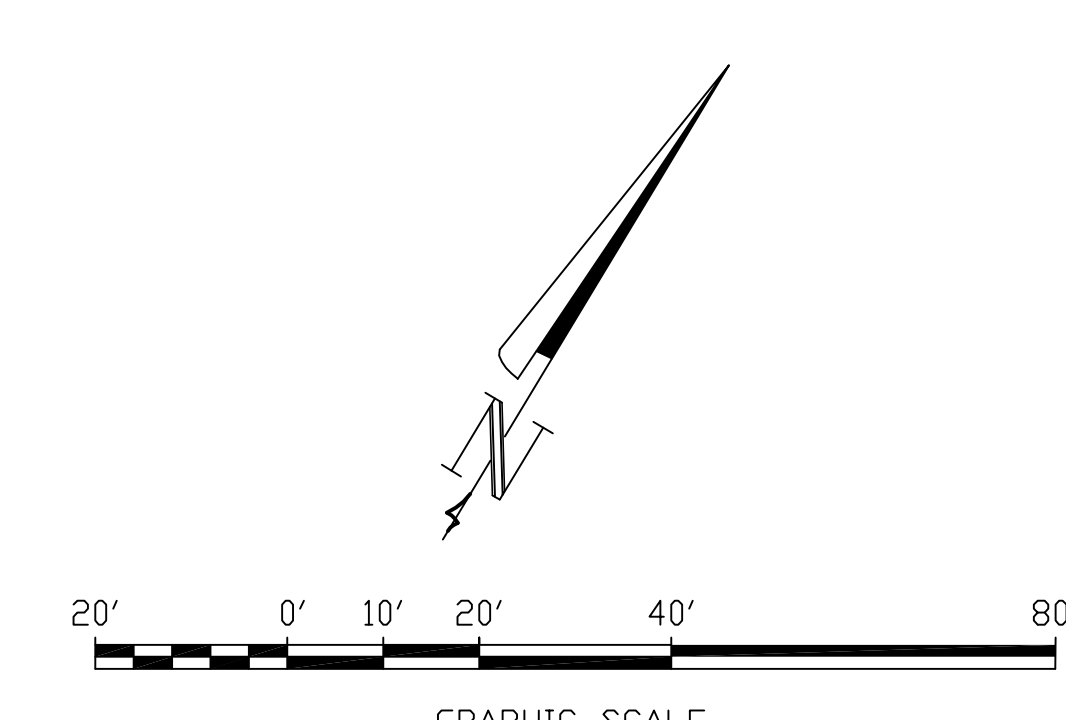
1. ALL STORM DRAINAGE SYSTEM SHALL BE IN ACCORDANCE WITH THE LATEST SAN MATEO COUNTY COMMUNITY COLLEGE DISTRICT STANDARD PLANS AND SPECIFICATIONS, AND SHALL BE SUBJECT TO INSPECTION BY THE DEPARTMENT.
2. REFERENCE DRAWINGS:
STORM DRAINAGE PLAN C-711 (SUBMITTED IN INCREMENT 1)
3. PIPE SIZES ARE AS SHOWN ON PLAN.
4. SD PIPES SHALL BE SLOPED AT S=0.00500 MIN. UNO.
5. PIPE MATERIALS
• ALL PERFORATED SD PIPES SHALL BE AAUHTO M278 D3034, SDR-35 PVC PIPE, UNO.
6. PROVIDE AND INSTALL ALL APPURTENANCES TO 5' OUTSIDE OF BUILDING.
7. ALL DRAIN PIPE SHALL BE INSTALLED WITH FILTER FABRIC & CRUSHED ROCK SIMILAR TO DETAIL 1/C-712.
8. CONTRACTOR TO SLOPE SUB-GRADE TO DRAIN TO PROPOSED PERFORATED PIPE, MIN SLOPE 1%.



LEGEND & ABBREVIATION

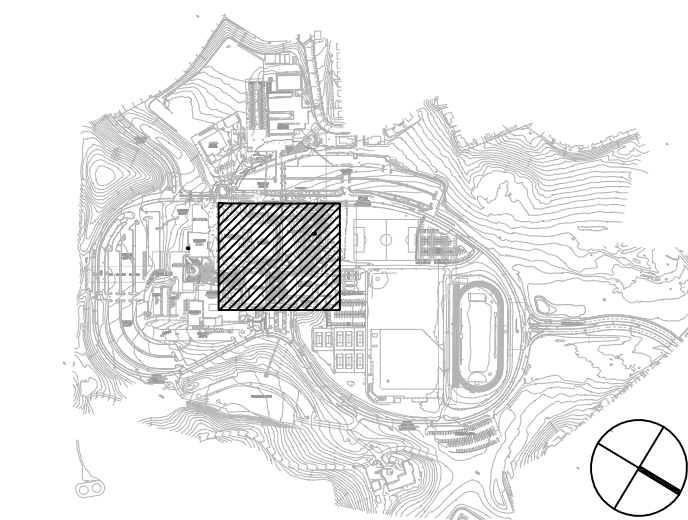
ABBR.	SYMBOL	DESCRIPTION	DETAIL
SDMH	●	STORM DRAIN MANHOLE	6 C-903
SD	---	(E) STORM DRAIN PIPE	2 C-902
	---	4" PERFORATED PIPE	
	---	(N) STORM DRAIN PIPE	
	→	SUB-GRADE FLOW	
	→	SUB-DRAIN PIPE FLOW	

REFERENCE



PROJECT RECORD SET

SKYLINE COLLEGE CIP2 DESIGN-BUILD BUILDING 4



PROJECT NO. 07012.00 DRAWN BY: DZ
DATE: 01/31/11 CHECKED BY: MC
SCALE: AS SHOWN

FOUNDATION DRAINAGE SYSTEM

All drawings and written material appearing herein constitute original and unpublished work of the Architect/Engineer and may not be duplicated, used or disclosed without consent of Architect/Engineer. If this drawing is not 30"x42", then the drawing has been revised from its original size. Noted scales must be adjusted. This line should be equal to one inch.