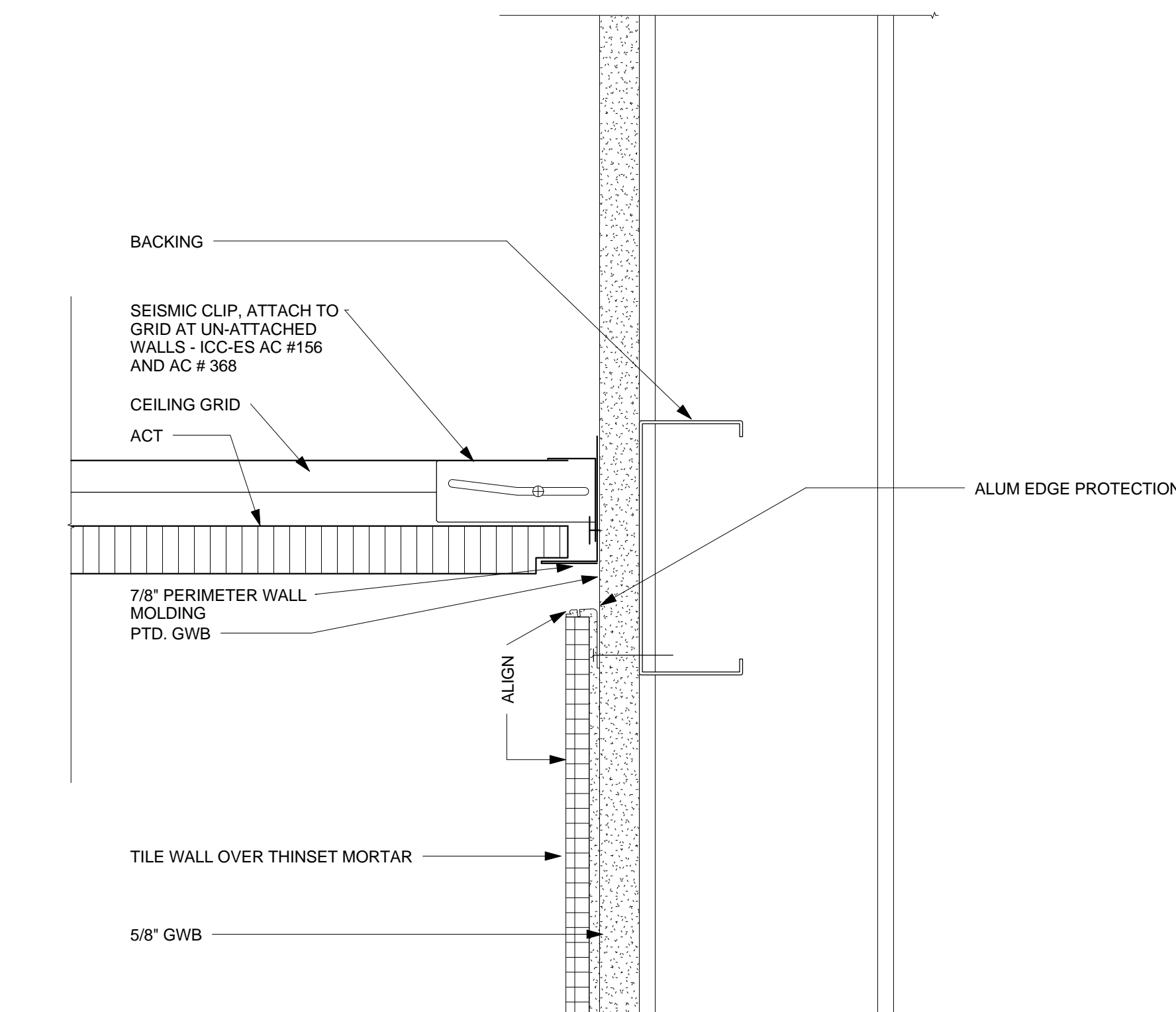
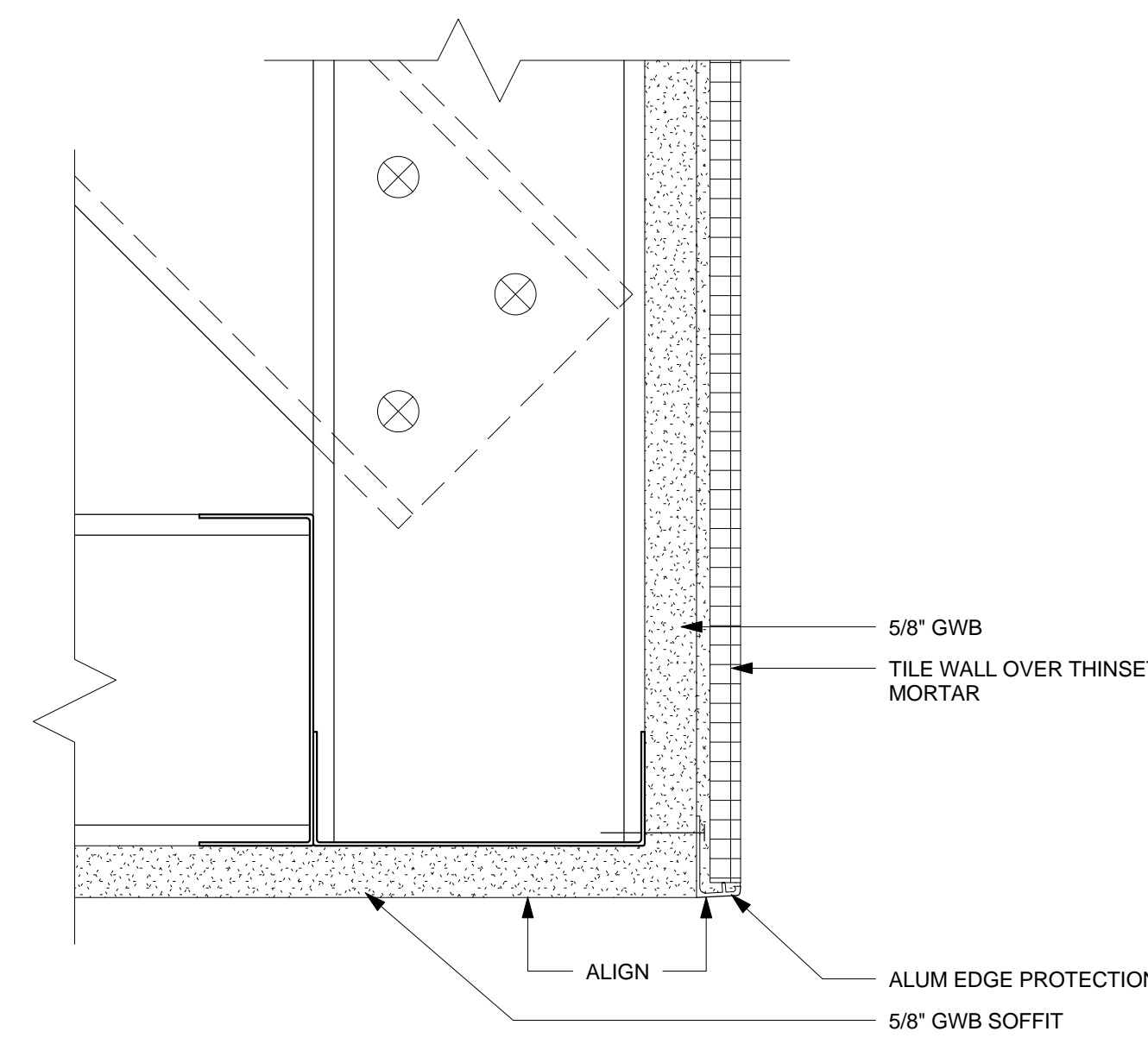


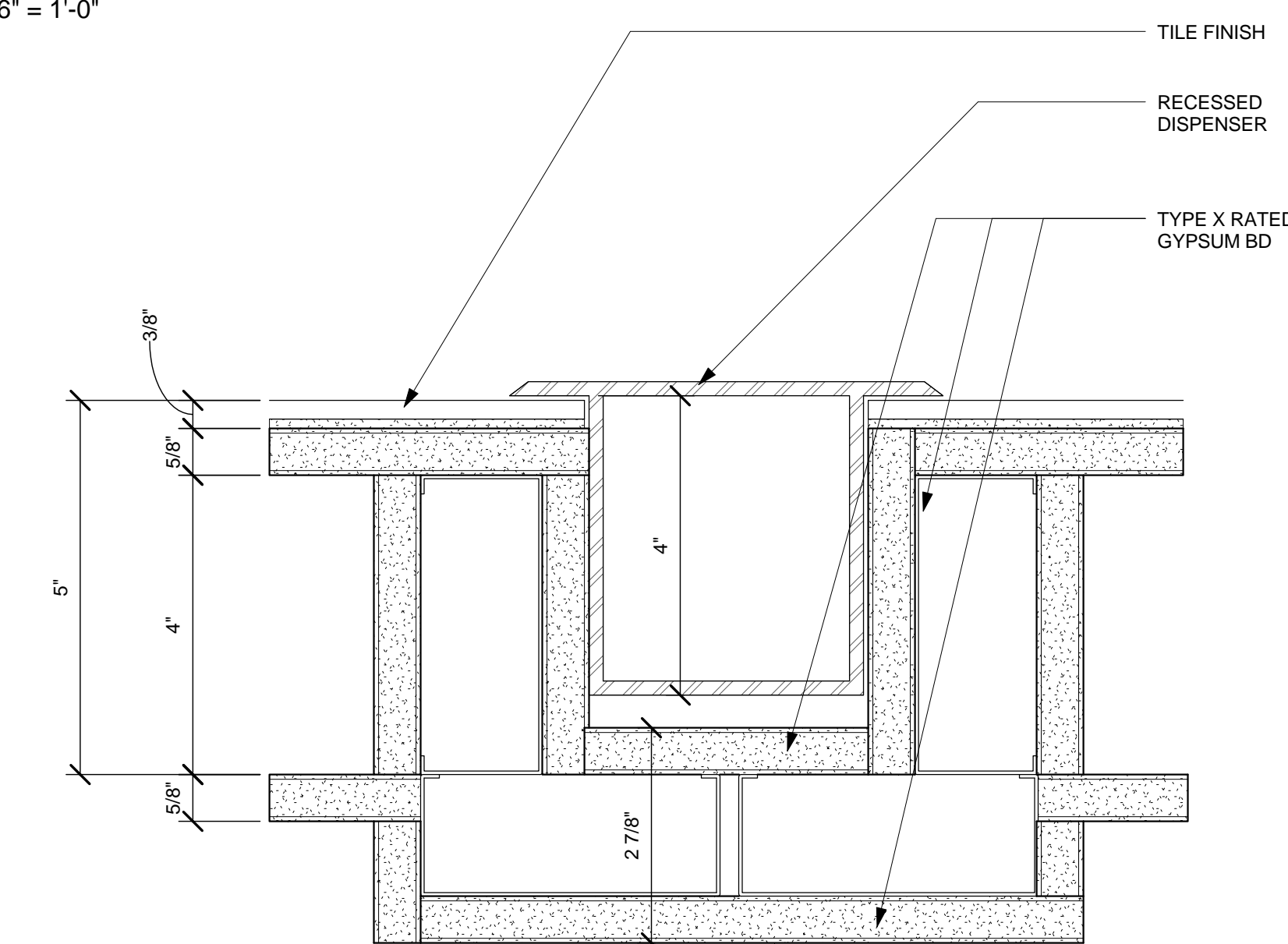
**6** TILE WALL AT PASS THRU  
6" = 1'-0"



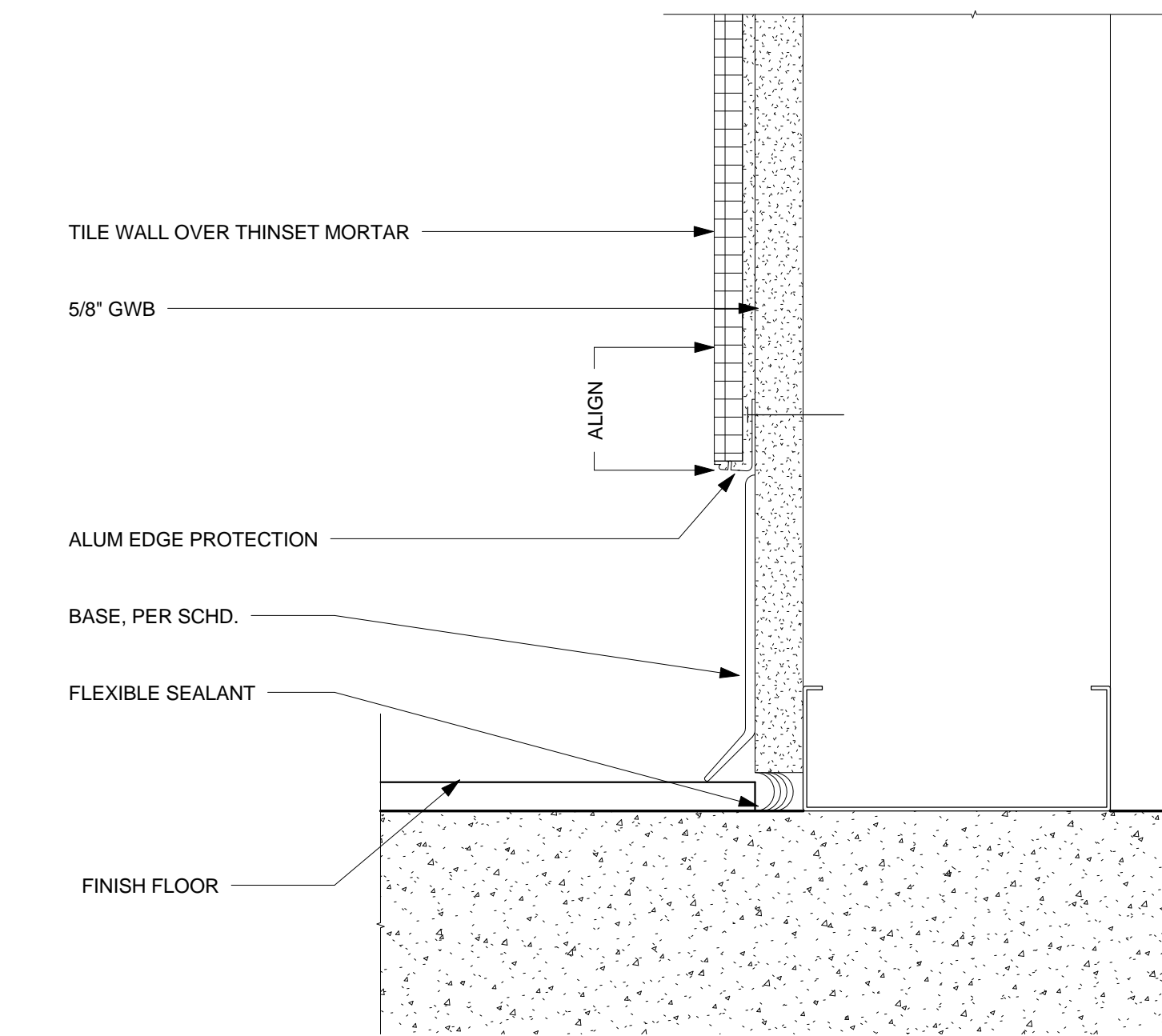
**3** TILE WALL AT ACT  
6" = 1'-0"



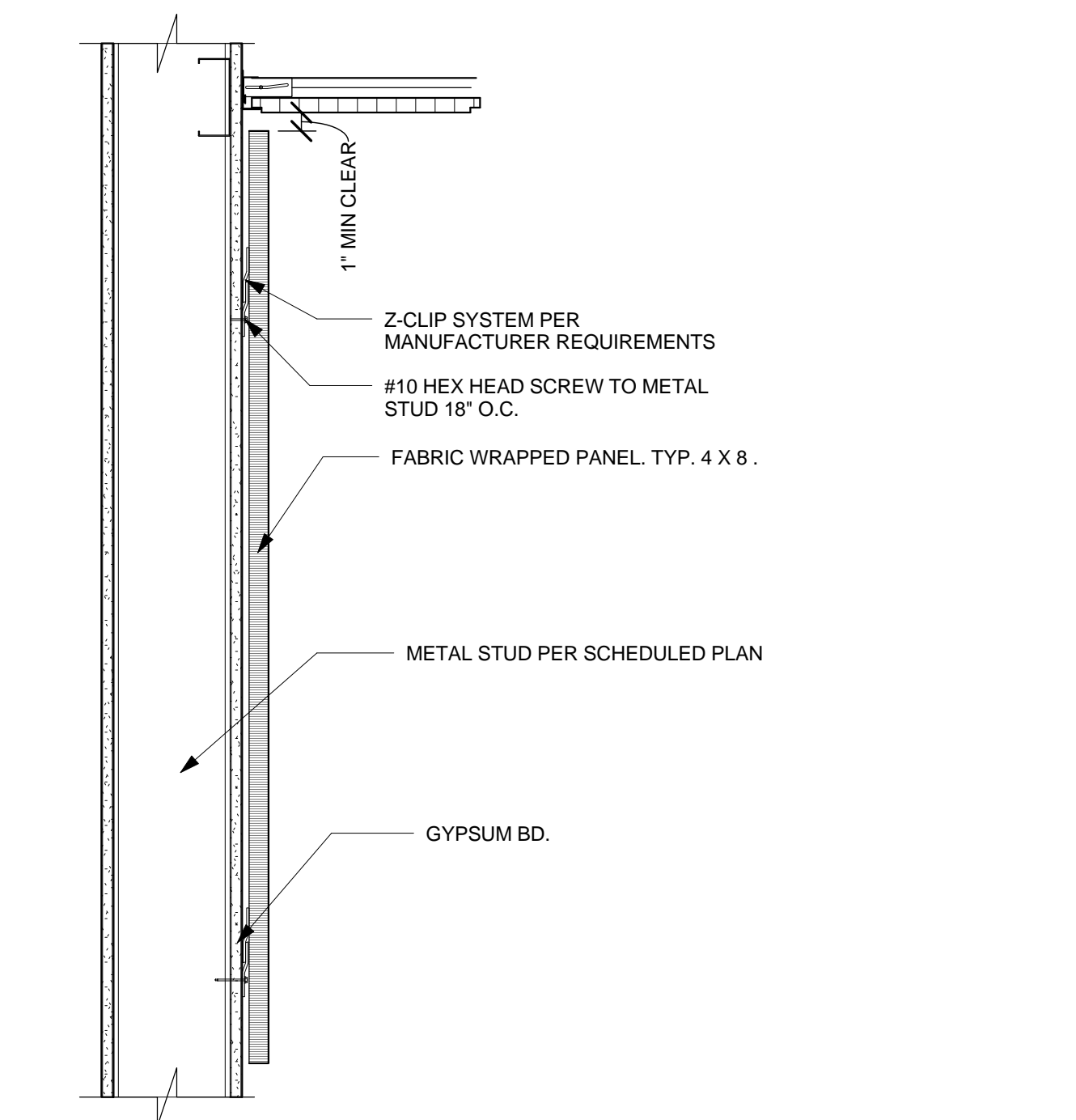
**8** TILE WALL AT SOFFIT  
6" = 1'-0"



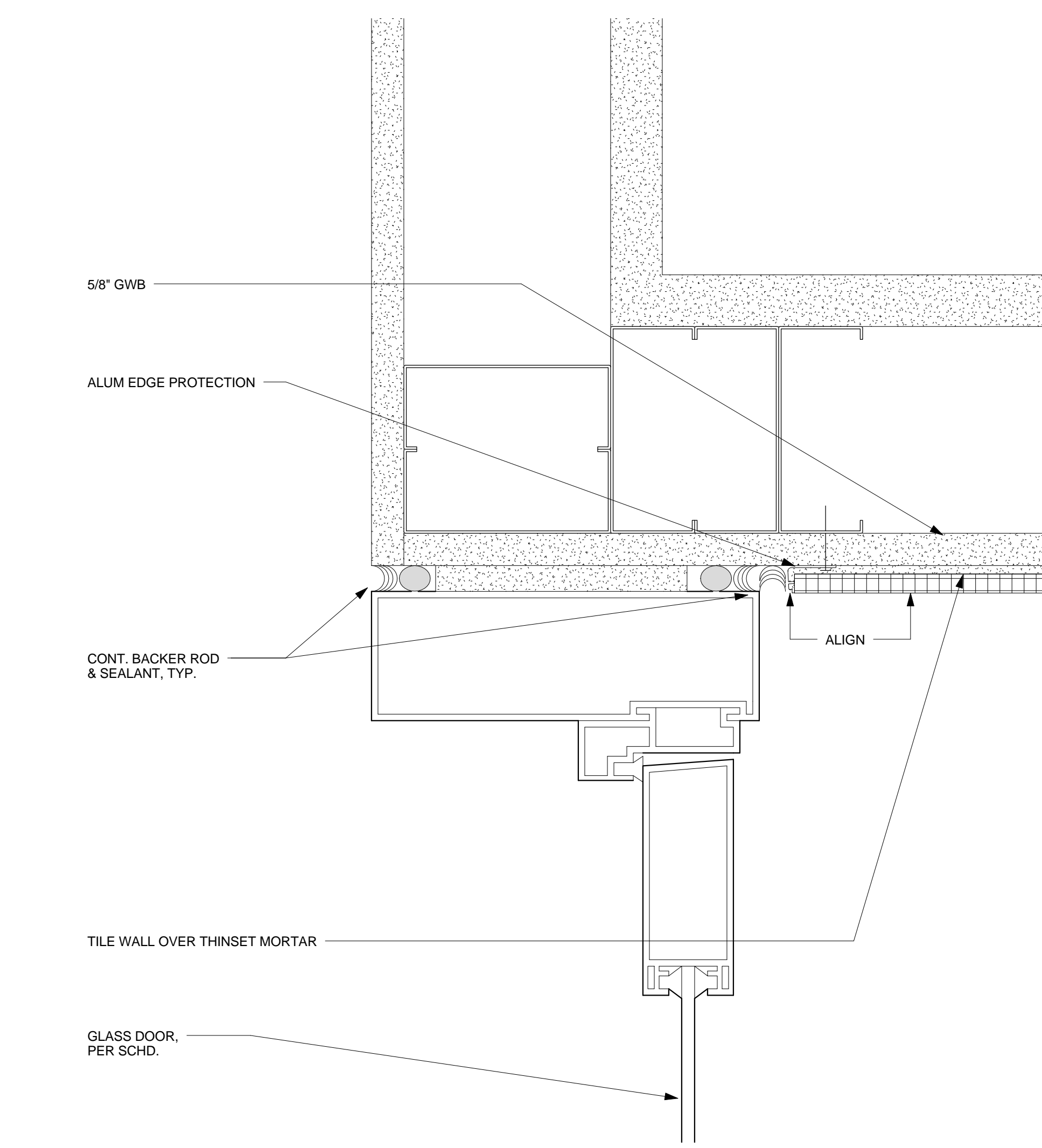
**5** RECESSED DISPENSER AT RATED WALL  
6" = 1'-0"



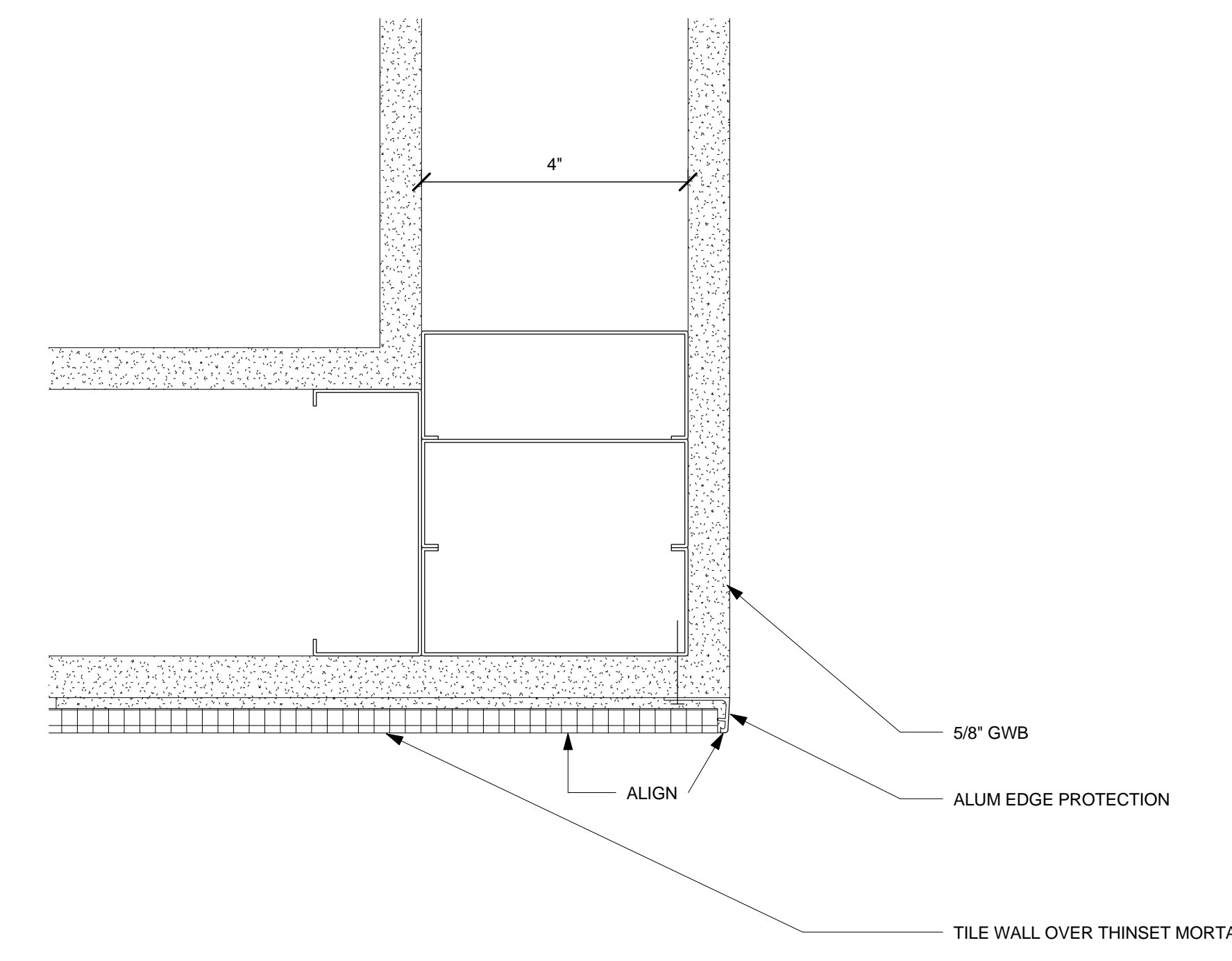
**2** TILE WALL BASE  
6" = 1'-0"



**7** TYP. ACOUSTICAL WALL PANEL DETAIL  
1 1/2" = 1'-0"



**4** TILE WALL AT STOREFRONT JAMB  
6" = 1'-0"



**1** TILE WALL EDGE  
6" = 1'-0"

PROJECT  
RECORD SET

BUILDING 4  
SKYLINE COLLEGE  
SAN MATEO COUNTY  
COMMUNITY COLLEGE  
DISTRICT

CIP2 DESIGN-BUILD  
PROJECT  
BUILDING 4

PROJECT NO.: 07012.00 DRAWN BY: DG  
DATE: 11/20/09 CHECKED BY: Checker  
SCALE: As indicated

SHEET TITLE:  
INTERIOR  
DETAILS