

**San Mateo County
Community College District**

SMCCCD Capital Improvements Program

**District Wide Infrastructure Physical
Access Controls Phase I Project**

Mandatory Pre-Bid Conference

November 29 and December 1, 2005

(and December 15, 2005 as per Addendum #1)



Agenda

- Welcome/Introductions
- Administration
- Project Overview
- Program Stabilization Agreement
- Site Access and Mobilization
- Schedule
- Coordination Requirements
- Bidding Documents/Additional Items
- Question & Answer
- Site Walk

Welcome and Introductions

- **Jose D. Nuñez**, Executive Director, District Facilities Planning & Operations
- **Linda da Silva**, Director, District Facilities Planning & Operations
- **Frank Vaskelis**, Director of Information Technology Services
- **Karen Freeman**, Program Manager, Swinerton Management & Consulting
- **Elisabeth Nielsen**, Program Administrator, Swinerton Management & Consulting
- **Peter Hempel**, Project Manager, Swinerton Management & Consulting
- **Thomas Keller**, Engineer, TeeCOM Design Group

Welcome

Perspective Bidding C-10 Contractors

Must meet requirements of Bidding/ Contract Documents (these requirements are per revisions of Addendum #1 dated 12/7/05)

- Must be currently Pre-Qualified C10 Contractor as determined by the District's process last spring:
 - Atlas/Pellizzari Electric
 - Cupertino Electric
 - Del Monte Electric
 - Golden Bay Construction
 - Intermountain Electric Company
 - Liberty Electric
 - Palmer Electric
 - Transbay Fire Protection
- Document 01395 – Project Labor Agreement
- Follow all Contract Document requirements.

Pre-Bid Conference Administration

- Mandatory Conference
- Sign-in
- Receipt at end of conference

Project Overview

District Wide Access Controls

- Global Edition, Group 4 AMAG Headend System – Global Server to be located at District Office
- Access Controls turnkey system at the District Office
 - Card readers, door hardware, security wiring, electrical power, security panels, alarm monitoring, etc.
- Regional Server System, Group 4 AMAG, tied to the Headend System. Installed at the Main Point of Entry (MPOE) for telephone/data cabling on each campus
 - Canada College – Building 8
 - College of San Mateo – Building 1
 - Skyline College – Building 1

Project Overview

- Unit Pricing – For Future Projects
 - Six different typical security door configurations
 - Three different typical security hub configurations
- The Intent of the Unit Pricing is to establish a unit price contract that may be used for future projects.
- As future projects come on-line, the unit price contract may be used to assign the ACAMS contractor to the project.

Program Stabilization Agreement

<http://www.smccd.net/accounts/facilities/planconstruct/default.html>

Home
Organization
Campus Maps
FPO Handbook
Feedback
Facilities Survey *New!*



Bond Oversight
Committee

PLANNING & CONSTRUCTION

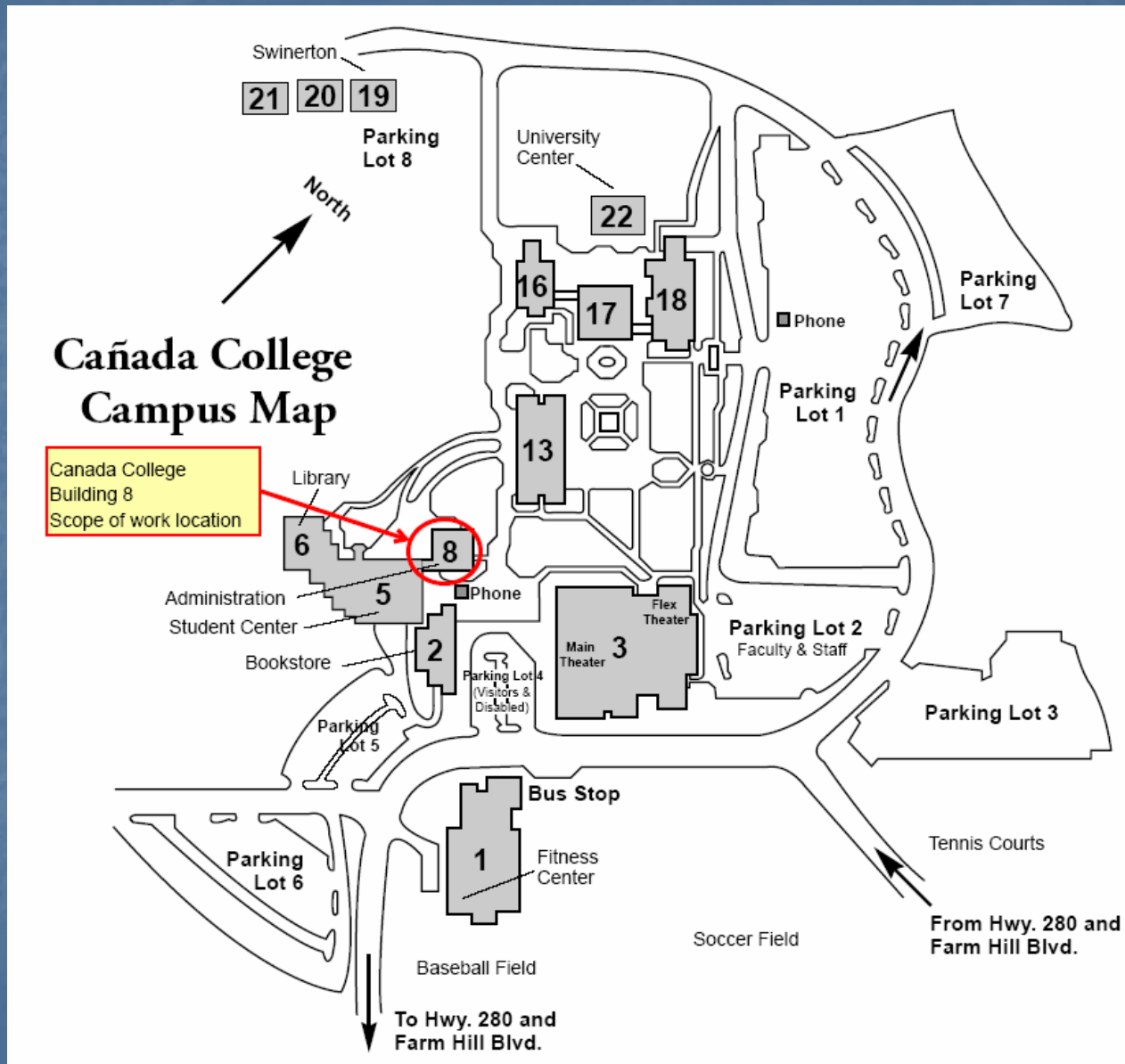
MAINTENANCE & OPERA

PLANNING & CONSTRUCTION

- [CAPITAL IMPROVEMENT PROGRAM \(CIP\)](#) *(Including Notice to Contractors, RFP's, RFQ's, Directions, Attendees)*
- [SMALL CAPITAL IMPROVEMENT PROJECTS](#)
- [CAPITAL IMPROVEMENT FUNDING SOURCES](#)
- [DISTRICT FACILITIES NEEDS ASSESSMENT](#)
- [PROJECT DELIVERY METHODS](#)
- [ARCHITECTS, ENGINEERS, CONTRACTORS & OTHER CONSULTAN](#)
- [LABOR & RISK MANAGEMENT](#)

"Facilities Excellence"

Site Access and Mobilization



Site Access and Mobilization

COLLEGE OF SAN MATEO & DISTRICT OFFICE MAP

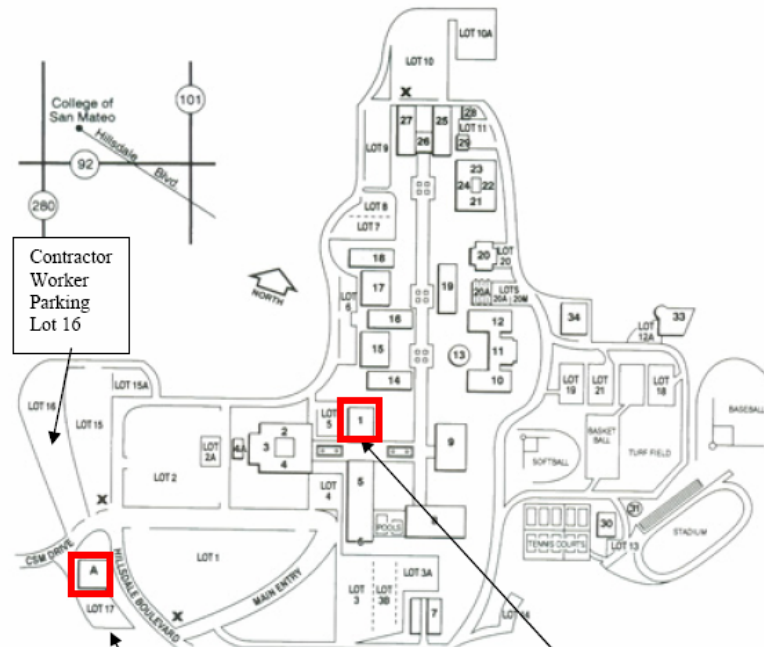
Building:

1. Administration
2. Music
3. Theater, Broadcasting Arts
4. Art
- 4a. Ceramics/Sculpture
5. Student Center

Associated Students Office
 Bookstore
 Cafeteria
 Cafe International
 Career Services Center
 Cooperative Education
 Student Activities Office
 Student Employment
 Transfer Center

6. Swinerton M & C
7. Maintenance
8. Gymnasium
9. Library & KSCM-TV/FM
10. Life Science
11. Science Lecture
12. Physical Science
13. Planetarium
14. South Hall
15. Faculty Offices
16. Central Hall DSPTS
17. Faculty Offices
18. North Hall
19. Engineering, Electronics
20. EOPS, Multicultural Center, Horticulture
- 20A. Horticulture Greenhouses
21. Cosmetology
22. Dental Assisting
23. Nursing Lab, Public Safety
24. Locker Rooms
25. Aeronautics
26. Technical Lecture
27. Technical Training
28. Test Cell
29. NPA Lab
30. Athletics Locker Rooms
31. Athletics Ticket Booth
32. Athletics Team House
33. Lazarus Child Development Ctr
34. Temporary Building

A. District Administrative Offices
 3401 CSM Drive



Contractor
 Worker
 Parking
 Lot 16

District Office, Building A.
 Scope of Work Location

College of San Mateo
 Building 1
 Scope of Work Location

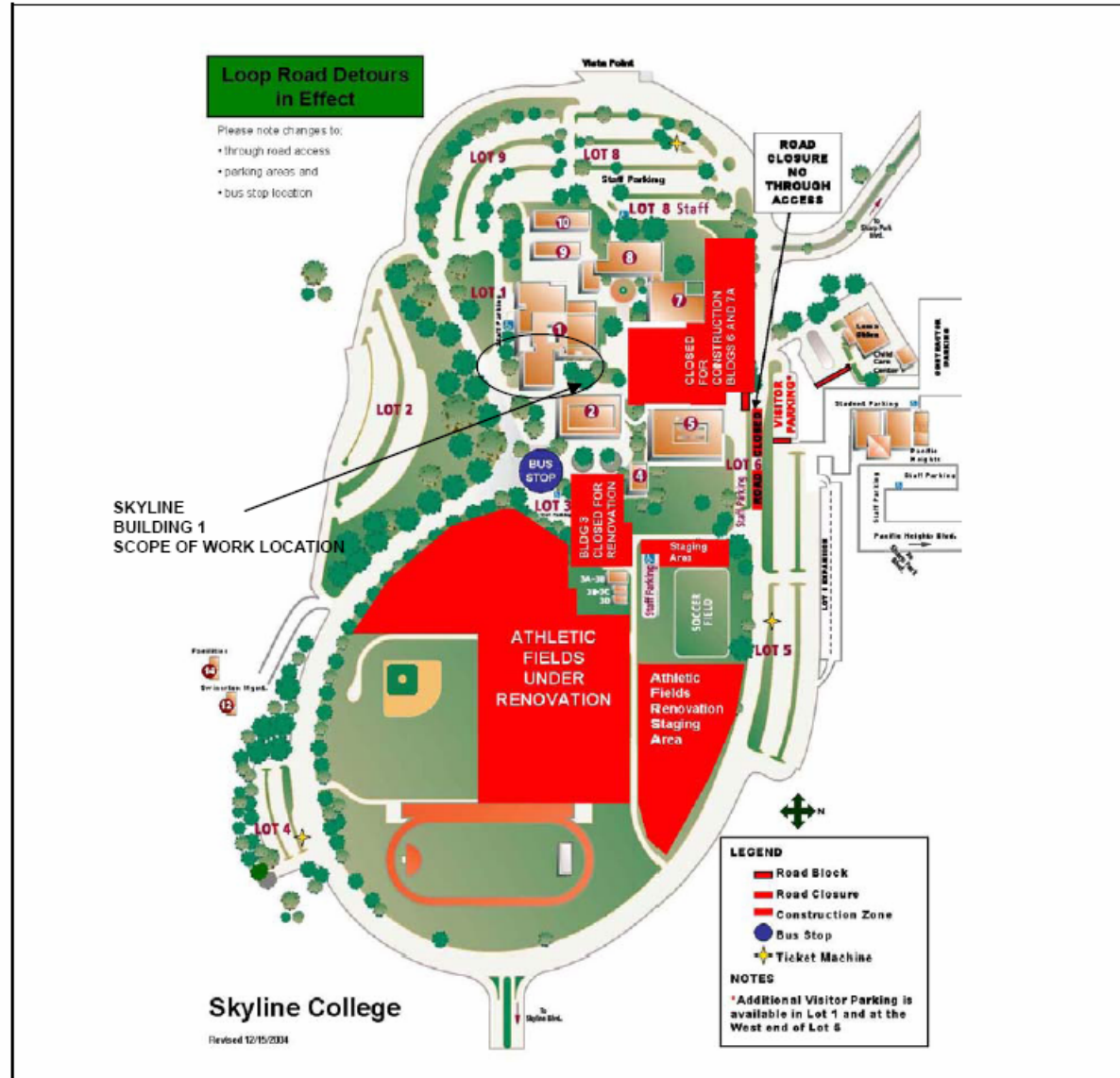
Directions to the College of San Mateo

From Highway 92, exit on the West Hillsdale Blvd exit; travel West on Hillsdale Boulevard (up the hill). Turn right into the main entrance of the college and follow the road towards parking Lot 3. Swinerton Management & Consulting is located in Building 6, in front of parking lot 3, near the swimming pool. Enter Bldg 6 thru the double glass doors on the lower level on the south facing side of the building.

Parking is by Permit Only During Class Hours Please purchase a day permit or see Swinerton personnel for a temporary pass. **One-Day Permits:** \$1.00 per day - Permit Machines Located in Lots 1, 10 & 15 marked by "X" on the map above.

Site Access and Mobilization

SKYLINE COLLEGE MAP



Schedule

Major Milestones

- **Subcontractor Pre-Qualifications Due – Wednesday, December 21, 2005 @ 2pm @ CSM Bldg. 6**
- **Bid Opening – Thursday, January 12, 2006 @ 2pm @ CSM Bldg. 6**
- SMCCCD Board of Trustees review/ approval of low bidder – Jan 25
- Notice of Award of Contract issued to low bidder – target Jan 26
- Start Preparation of Submittals – upon Notice Of Award, due in 25 days
- Construction Kick-Off Meeting – target Feb 8
- Construction Period start – target Feb 13
- Construction duration, start to substantial completion:
 - College of San Mateo Regional Server – 72 days
 - Skyline College Regional Server – 93 days
 - Balance of scope (Canada Regional, District Office) – 129 days
 - Final Completion – within 35 days after complete Substantial Completion

Coordination Requirements

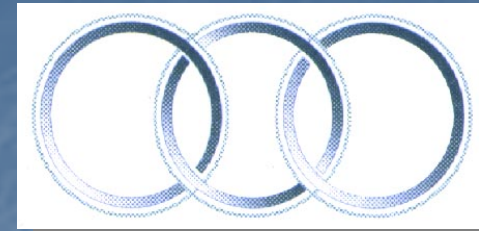
- Campus Educational Mission is Paramount
- Communication with District CM Project Manager
- Coordination Meetings with ITS Information Technology Services department
- Protection of Existing Equipment and Spaces
- Weekly Owner Meeting
- Notices
- Safety

Bidding Documents/Additional Items

- San Jose Blue, Redwood City – 408.295.5770
 - Ask for “District Wide Infrastructure Physical Access Controls Phase I Project” also on PlanWell
- Plan Holder List will be maintained
- Any Addendum will be issued via San Jose Blue
- Bid RFI’s should be addressed to:
 - Peter Hempel, SM&C
 - FAX 650-306-3455 - email: hempelp@smccd.net
- Local Plan Rooms also hold bid documents



**San Mateo County
Community College
District**



Question & Answer

www.smccd.net/accounts/facilities

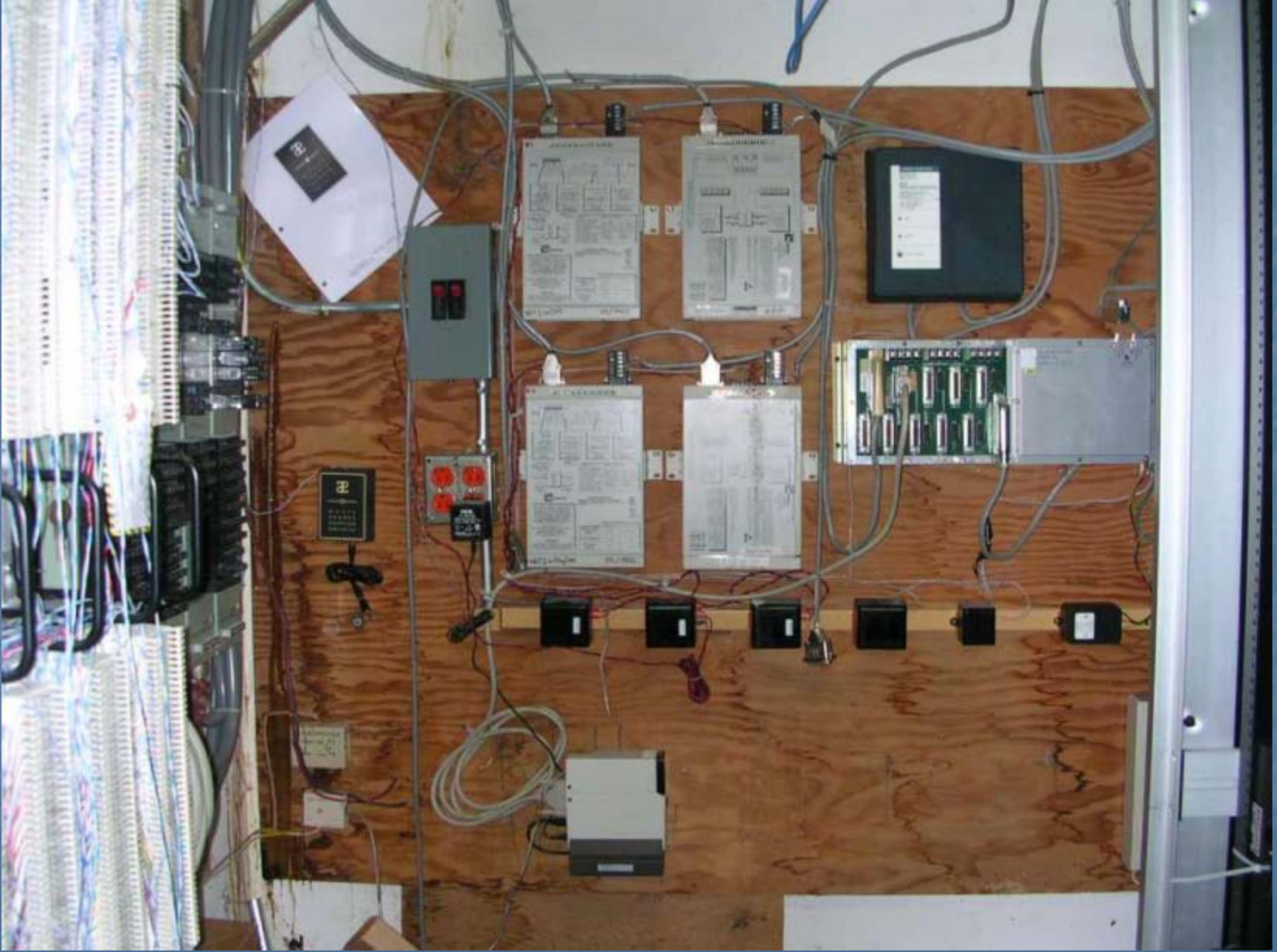


Site Walk of District Office and CSM Building 1

Contact Peter Hempel for mandatory site visits of Canada College Building 8 and Skyline College Building 1

Canada College MPOE

Pictures of Bldg 8 MPOE room





















Skyline College MPOE

Pictures of Bldg 1 MPOE room







