

SITE PLAN
FACILITIES MAINTENANCE CENTER
SKYLINE COLLEGE
3300 COLLEGE DRIVE
SAN BRUNO, CA 94066

REVISIONS		
NO.	ITEM	DATE

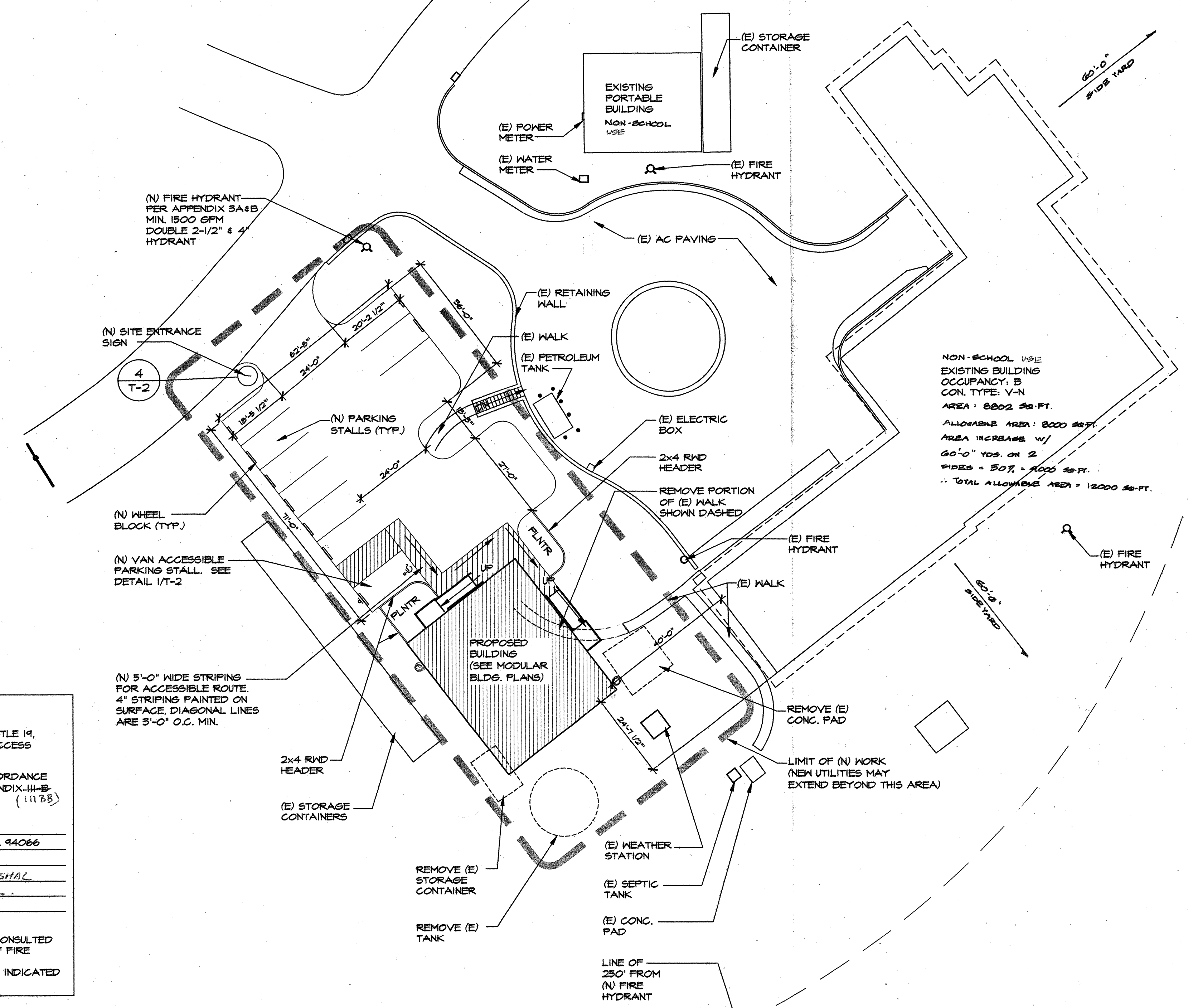
CLIENT APPROVAL:
 DRAWN BY: **GNS**
 CHECKED BY: **DBP**
 JOB NO: 2129 DATE: 09/20/01

T-3

PARKING SUMMARY
 TOTAL NO. PARKING SPACES : 9
 TOTAL NO. ACCESSIBLE PARKING STALLS : 1
 NO. VAN ACCESSIBLE PARKING STALLS : 1

NOTES:
 1. ACCESSIBLE PATH OF TRAVEL AS INDICATED ON PLAN IS A BARRIER FREE ACCESS WITHOUT ANY ABRUPT VERTICAL CHANGES EXCEEDING 1/2" AT 1:2 MAX. SLOPE, EXCEPT THAT LEVEL CHANGES DO NOT EXCEED 1/4" VERTICAL. MAXIMUM CROSS SLOPE OF 2%.
 2. CONTRACTOR TO VERIFY THAT ALL BARRIERS IN THE PATH OF TRAVEL HAVE BEEN REMOVED PER CBC SECTION 1193B.7.

NOTES:
 1. SEE CIVIL ENGINEERING PLANS FOR ALL OTHER NOTES AND DIMENSIONS. IN CASE OF CONFLICT, CIVIL ENGINEER'S SHEETS GOVERN, U.O.N.
 2. SEE CIVIL ENGINEERING, ELECTRICAL ENGINEERING AND MECHANICAL ENGINEERING PLANS FOR UTILITY PLANS AND NOTES.
 3. SEE MATERIAL NOTES ON SHEET T-2 FOR TRAFFIC PAINT, WHEEL BLOCKS AND SIGNAGE NOTES.



NON-SCHOOL USE
 EXISTING BUILDING
 OCCUPANCY: B
 CON. TYPE: V-N
 AREA: 8802 SQ. FT.
 ALLOWABLE AREA: 8000 SQ. FT.
 AREA INCREASE W/
 60'-0" YDS. ON 2
 SIDES = 50% = 4000 SQ. FT.
 ∴ TOTAL ALLOWABLE AREA = 12000 SQ. FT.

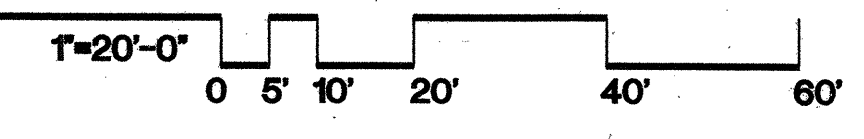
LOCAL FIRE AUTHORITY REVIEW

- ACCESS ROADS AND GATE ENTRANCES ARE IN ACCORDANCE WITH TITLE 19, CALIFORNIA CODE OF REGULATIONS SUBCHAPTER 1, ARTICLE 3.05 (ACCESS ROADS) AND ARTICLE 3.16 (GATE ENTRANCES) TO SCHOOL SITES.
- FIRE FLOW, FIRE HYDRANT LOCATION AND DISTRIBUTION ARE IN ACCORDANCE WITH CALIFORNIA FIRE CODE, APPENDIX III-A (FIRE FLOW) AND APPENDIX III-B (HYDRANT LOCATIONS).

LOCAL FIRE AUTHORITY: SAN BRUNO FIRE DEPARTMENT
 ADDRESS: 555 EL CAMINO REAL CITY/STATE/ZIP: SAN BRUNO, CA 94066
 PHONE NO.: (650) 616-7096 DATE: 09/19/01
 APPROVAL ISSUED BY: *G. Devenport* RANK/TITLE: FIRE MARSHAL
 COMMENTS: Approval subject to field inspection.

(A SIGNATURE ABOVE SIGNIFIES THAT THE LOCAL FIRE AUTHORITY WAS CONSULTED REGARDING ACCESS ROADS, GATES IN PERIMETER FENCES, LOCATION OF FIRE HYDRANTS, FIRE FLOW, FIRE DEPARTMENT CONNECTIONS, PORTABLE FIRE EXTINGUISHERS AND FIRE PROTECTION DURING CONSTRUCTION. METHODS INDICATED ON PLANS AND IN SPECIFICATIONS ARE CONSIDERED ADEQUATE.)

1 OVERALL SITE PLAN
 (ALL WORK SHOWN IS EXISTING TO REMAIN, U.O.N.)



IDENTIFICATION STAMP
 DIVISION OF THE STATE ARCHITECT
 APPL 01 104070
 AC DS FLS SS CLO/PT
 DATE