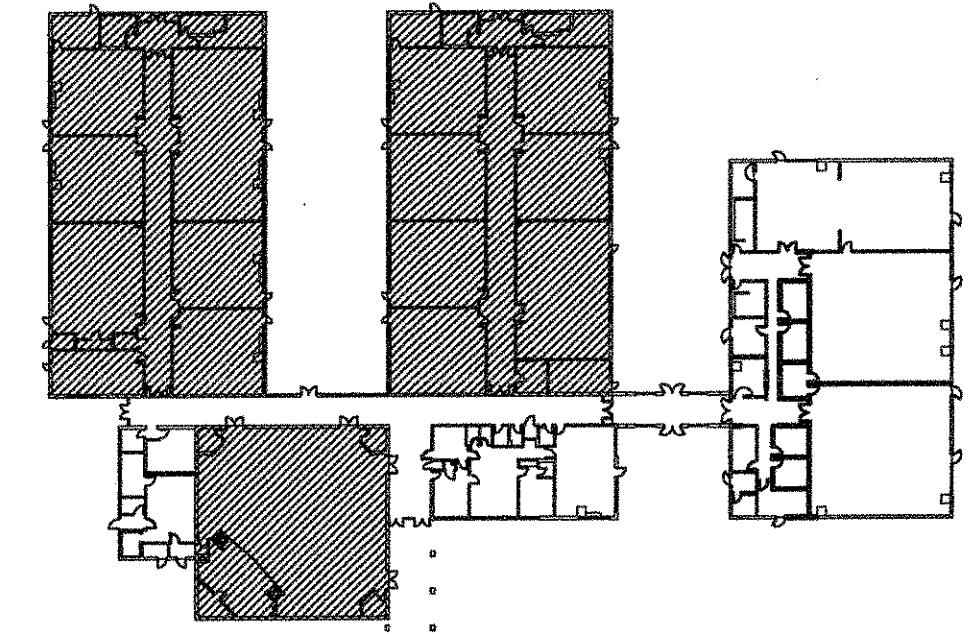


SEWER AND VENT PIPING PLAN

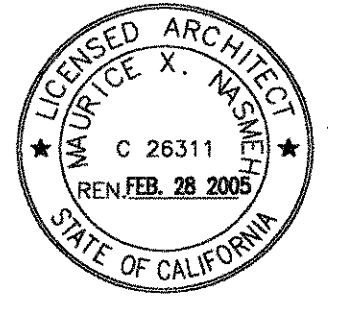
1/8"=1'-0" 0 2' 4' 8' 16' 24'



KEY PLAN



**Sugimura & Associates Architects**  
 Architecture • Planning • Interiors  
 Landscape Architecture  
 2155 South Bascom Ave., Suite 8008  
 Campbell, CA 95008  
 408-879-0600 FX 408-377-6066  
 COPYRIGHT © 2003 Sugimura & Associates Architects



IDENTIFICATION NUMBER  
 DIVISION OF THE STATE ARCHITECT  
 OFFICE OF REGULATION SERVICES  
 APP. NO. \_\_\_\_\_  
 AC. \_\_\_\_\_  
 DATE \_\_\_\_\_  
 FILE NO. \_\_\_\_\_  
 Division of the State Architect  
 1001 Clay St., Suite 7001  
 Oakland, CA 94612

**SEWER AND VENT PIPING PLAN**  
**BUILDING 13**  
**SKYLINE COLLEGE SWING SPACE**  
**PERMIT PACKAGE #3**  
**SKYLINE COLLEGE**  
**3300 COLLEGE DRIVE**  
**SAN BRUNO, CA 94066**

REVISIONS

NO.	ITEM	DATE
3	Miscellaneous Changes	7/01/04
4	As Bldg 2/4/05	

CLIENT APPROVAL:  
 DRAWN BY: JH  
 CHECKED BY: MDN  
 JOB NO: 2145.002 DATE: 13 FEB 2004

**P2.2**

OF SHEETS